

# 香港統計月刊

## **Hong Kong Monthly Digest of Statistics**

二零一二年三月

March 2012

*專題文章*

*Feature Article*

從事分判製造工序的安排及  
提供與製造業相關的技術支援服務的貿易公司  
Trading Firms Engaging in Sub-contract Processing  
Arrangement and Providing Manufacturing-related  
Technical Support Services

從事分判製造工序的安排及  
提供與製造業相關的技術支援服務的貿易公司  
**Trading Firms Engaging in Sub-contract Processing  
Arrangement and Providing Manufacturing-related  
Technical Support Services**

隨着中國經濟開放政策，自一九八零年代開始，香港的經濟體系經歷結構性的轉變。其中，很多香港廠商已把生產線移至中國內地，而一些香港進出口貿易公司亦於中國內地營運工廠。透過分判製造工序予中國內地的安排，香港的企業家善用中國內地大量的勞工及土地資源，成功地降低生產成本。已遷移生產線至中國內地的公司，很多以進出口貿易公司方式在香港繼續營運。這些公司亦會為在中國內地的聯繫生產機構提供與製造業相關的技術支援服務，例如產品設計、製造樣本及工模，以及生產籌劃。

自一九九五年起，本月刊定期刊登有關這課題的專題文章。本文提供上述發展的一些最新資料。

Driven by the open economic policies of China, the Hong Kong economy has been undergoing structural changes since the 1980s. Among other changes, many Hong Kong manufacturers have relocated their manufacturing processes to the mainland of China (the Mainland). Some import and export firms in Hong Kong also operate factories in the Mainland. Through the sub-contract processing arrangement in the Mainland, Hong Kong entrepreneurs have successfully reduced the costs of manufacturing by taking advantage of the large base of labour and land resources in the Mainland. Many of the firms which have moved their manufacturing processes to the Mainland continue to operate in Hong Kong, in the form of import and export firms. These firms also provide manufacturing-related technical support services, e.g. product design, sample and mould making, and production planning, to the associated manufacturing firms in the Mainland.

Feature articles addressing this subject have been published regularly in this *Digest* since 1995. This article provides some latest information on the above development.

如對本文有任何查詢，請聯絡政府統計處經銷服務統計組  
(電話：2802 1367；電郵：asw@censtatd.gov.hk)。

If you have any enquiries on this article, please contact the Distribution Services  
Statistics Section, Census and Statistics Department  
(Tel. : 2802 1367; e-mail : asw@censtatd.gov.hk).

# 從事分判製造工序的安排及提供與製造業相關的技術支援服務的貿易公司 Trading Firms Engaging in Sub-contract Processing Arrangement and Providing Manufacturing-related Technical Support Services

## 1. 香港製造業的發展

1.1 隨着中國經濟開放政策，自一九八零年代開始，香港的經濟體系經歷結構性的轉變。其中，很多香港廠商已把生產線移至中國內地，而一些香港進出口貿易公司亦於中國內地營運工廠。透過分判製造工序予中國內地的安排<sup>1</sup>，香港的企業家善用中國內地大量的勞工及土地資源，成功地降低生產成本。

1.2 已遷移生產線至中國內地的公司，很多以進出口貿易公司方式在香港繼續營運，這有助把在內地生產的貨物進口香港及再轉口至外地市場。

1 「分判製造工序予中國內地的安排」是指一項香港機構與內地機構的合約協議。根據合約，香港機構給予內地機構在中國內地進行生產工序的定單。

「分判製造工序予中國內地的安排」與政府統計處所進行的貿易統計調查中採用的「外發中國內地加工」不同。前者的涵蓋範圍較大。「外發中國內地加工」是指香港與中國內地機構根據合約安排在內地進行生產活動。該等安排必須符合下列情況：

- (甲) 生產所需的原料或半製品須部分或全部由港方提供；及
- (乙) 經加工後的製成品須運返香港作本銷或出口往海外國家／地區。

「分判製造工序予中國內地的安排」涵蓋香港與內地機構之間所有的生產合約，當中亦包括不符合以上(甲)或(乙)的情況的合約安排。

## 1. Development of Manufacturing in Hong Kong

1.1 Driven by the open economic policies of China, the Hong Kong economy has been undergoing structural changes since the 1980s. Among other changes, many Hong Kong manufacturers have relocated their manufacturing processes to the mainland of China (the Mainland). Some import and export firms in Hong Kong also operate factories in the Mainland. Through the sub-contract processing arrangement in the mainland of China (SPAC)<sup>1</sup>, Hong Kong entrepreneurs have successfully reduced the costs of manufacturing by taking advantage of the large base of labour and land resources in the Mainland.

1.2 Many of the firms which have moved their manufacturing processes to the Mainland continue to operate in Hong Kong, in the form of import and export firms. This could facilitate import of goods produced in the Mainland and their subsequent re-export to foreign markets.

1 Sub-contract processing arrangement in the mainland of China (SPAC) is defined as a contractual agreement between a party in Hong Kong and a party in the Mainland, whereby the Hong Kong party places an order with the party in the Mainland to carry out production processing in the Mainland.

SPAC differs from outward processing (OP) in the Mainland as adopted in trade surveys conducted by the Census and Statistics Department. The former has a broader coverage. OP is defined as a contractual agreement between a Hong Kong party and a party in the Mainland to carry out production processing in the Mainland, and it is subject to the following conditions :

- (a) the raw materials or semi-manufactures required have to be supplied wholly or partly by the Hong Kong party; and
- (b) the processed goods have to be returned to Hong Kong for local consumption or exporting to overseas countries/territories.

SPAC covers all contractual agreements on production between a Hong Kong party and a party in the Mainland, also including those not fulfilling conditions (a) or (b) above.

1.3 有些製造業公司仍在香港保留一些生產工序，特別是涉及較高技術及較先進科技的生產工序。但很多以前從事製造業的公司則已將所有生產工序遷移至中國內地，在香港的公司只保留非製造的活動，例如市場銷售、定單處理、材料採購、設計、產品發展、品質控制、包裝，以及後勤服務。

1.4 很多以前從事製造業的香港公司的營運模式已由製造轉為貿易，即是由製造業公司轉為服務供應者。

1.5 由於中國內地有利的營商環境，一些傳統的進出口貿易公司亦已從事分判製造工序予中國內地的安排，並在不同程度上為內地生產單位提供與製造業相關的技術支援服務。一九九零年代中，本港有大量新進出口貿易公司成立，作為內地新生產機構的香港基地。

1.6 香港很多的企業家，其實有雙重身分。一是作為香港貿易商，二是作為內地工廠的東主或合伙人。他們在香港經營的進出口貿易公司，從他們在內地的工廠進口商品，隨後轉口至世界各地。但這些進出口貿易公司的運作，與傳統的進出口貿易公司有所不同，前者所進行的活動往往涉及與製造業相關的技術支援服務，例如產品設計、製造樣本及工模，以及生產籌劃。

1.7 此外，這些由香港的企業家全部／部分擁有的內地工廠及與其互有聯繫的香港進出口貿易公司，對本港的金融、運輸、通訊及其他行業的支援服務會有很大的需求。這對香港服務業的發展有很重大的影響。

1.3 Some manufacturing firms are still undertaking certain manufacturing processes in Hong Kong, in particular those involving higher skill and more advanced technology. However, many firms previously engaged in manufacturing have moved all manufacturing processes to the Mainland, leaving only non-manufacturing activities such as marketing, orders processing, materials sourcing, design, product development, quality control, packaging and logistics to be undertaken by the local firms.

1.4 Many firms previously engaged in manufacturing in Hong Kong have shifted their modes of operation from manufacturing to trading, i.e. from being manufacturing firms to service providers.

1.5 In view of the favourable business environment in the Mainland, some traditional import and export firms have also been engaged in SPAC and render, in varying degrees, manufacturing-related technical support services to the production units in the Mainland. In mid-1990s, quite a large number of new import and export firms were set up in Hong Kong to serve as a local base for new manufacturing firms in the Mainland.

1.6 Many entrepreneurs in Hong Kong in fact have dual capacity as traders in Hong Kong and proprietors or partners of factories in the Mainland. The import and export firms in Hong Kong operated by these entrepreneurs would import goods from their factories in the Mainland and subsequently re-export those goods to the rest of the world. However, these import and export firms operate in a way somewhat different from traditional importers/exporters. Activities undertaken by the former usually involve manufacturing-related technical support services, e.g. product design, sample and mould making, and production planning.

1.7 Besides, these factories in the Mainland wholly/partly owned by the Hong Kong entrepreneurs and their associated import and export firms in Hong Kong demand a lot of support services from financing, transport, communications and other industries in Hong Kong. This should have substantial impact on the development of Hong Kong's services industries.

1.8 近年間，在中國內地營運工廠的香港企業家正面臨前所未有的挑戰。環球金融海嘯之後，來自國際市場的定單急劇下降，而中國內地的營商環境也變得較嚴峻。中國內地經濟增長及人民幣逐步升值，均對物價方面帶來壓力，增加了營運成本。勞工工資也隨着勞工短缺及二零零八年年初實施新的勞動合同法而上漲。中國內地致力轉變其製造及出口結構，收緊出口加工及相關條例，對生產「高耗能、高污染及資源性」商品的廠商影響尤大。例如減少／廢除選定產品的出口退稅，及擴大限制作出口加工貿易的商品名單。

1.9 雖然在中國內地的製造業單位預期會採取各種應對策略（例如推行技術提升、進行業務程序重整、發展個人品牌，以及更著重拓展中國內地消費市場），然而部分公司亦有可能被迫縮減規模甚或結業。此外，把業務經營遷移到中國內地之外的地方亦可能是一種較長遠的選擇。這些發展或會影響分判製造工序予中國內地的安排以及對香港的支援服務的需求。

1.10 自一九九五年起，本月刊定期刊登有關從事製造業相關活動的貿易公司的專題文章。本文提供這項課題截至二零一零統計年的一些最新統計數字。

1.8 In recent years, Hong Kong entrepreneurs with factories in the Mainland have been facing unprecedented challenges. Orders from the international markets experienced a sharp plunge in the aftermath of the global financial tsunami while the Mainland business environment became more stringent. Economic growth in the Mainland and the gradual appreciation of the Renminbi posed pressure on the price front and increased the costs of operation. Labour wages also escalated amidst the shortage of labour and the imposition of the new Labour Contract Law in early 2008. Following the Mainland's efforts in transforming its manufacturing and export profile, manufacturers of "high energy consumption, high pollution and resourceful" commodities were particularly affected by the tightening of export processing and related regulations. These included, for example, the reduction/abolition of export tax rebates for selected products, and expansion of lists of restricted commodities for the export processing trade.

1.9 While different coping strategies, such as promoting technological upgrading, business processing re-engineering, developing own brands and increasing focus on Mainland consumer market, are expected to be adopted by manufacturing units in the Mainland, there is a likelihood that some might be forced to resort to downsizing or even closure. Furthermore, relocation of business operation to places outside the Mainland might also be a longer term option. These possible developments might have impacts on SPAC activities and related demand for support services in Hong Kong.

1.10 Feature articles addressing the subject on trading firms with manufacturing-related activities have been published regularly in this *Digest* since 1995. This article provides some latest statistics on this subject up to the reference year of 2010.

## 2. 製造業公司與進出口貿易公司的分類

2.1 在政府統計處進行的各項經濟統計調查中，香港公司的分類是根據「香港標準行業分類」<sup>2</sup>，而這分類是參照聯合國編製的「國際標準產業分類」確立的。根據國際指引，在某一經濟體系內的一間公司無論是否同時在其他國家／地區從事其他經濟活動，只會按其在該經濟體系所從事的主要經濟活動歸納入適當的行業類別。在決定一間香港公司是進出口貿易公司或製造業公司時，要視乎這間公司在香港的主要經濟活動，而不是它在中國內地或其他地方的經濟活動。

2.2 雖然一些公司或該些公司的東主可能在中國內地擁有製造廠房，但這些沒有在香港從事「核心」製造活動的公司將不會歸類為香港的製造業公司。即使這些香港公司和內地公司均由同一企業家擁有，而兩者的關係極為密切，但這些公司為不同個體，分別在兩地註冊從事不同的業務。

2.3 就統計而言，這些本地公司不應歸類為製造業公司，否則數據使用者在分析和應用有關「製造業」的數據時會有困難。要注意的是，這些香港公司並不具備製造業公司的很多特徵，它們沒有在香港擁有大型生產線，沒有在香港僱用大量的工場工人，沒有消耗大量的工業用電或水，也不需要處於工業大廈內。

---

2 政府統計處由二零零九年起在不同的統計調查已相繼採用「香港標準行業分類 2.0 版」，以取代過往的統計調查所使用的「香港標準行業分類 1.1 版」。為維持「香港標準行業分類 2.0 版」實施前及實施後數據的連貫性和可比性，政府統計處已按「香港標準行業分類 2.0 版」重新編製回溯至二零零五年的統計調查結果。除另有註明外，本文內的行業分類和所有數字均以「香港標準行業分類 2.0 版」為依據。有關「香港標準行業分類 2.0 版」的詳情，請參考《香港統計月刊》二零零八年十一月號所刊載的有關專題文章。

## 2. Classification of Manufacturing Firms and Import and Export Firms

2.1 The classification of Hong Kong firms in various economic surveys conducted by the Census and Statistics Department (C&SD) is based on the Hong Kong Standard Industrial Classification (HSIC)<sup>2</sup>, which follows the United Nations' International Standard Industrial Classification (ISIC). According to international guidelines, a firm in an economy is classified to an appropriate industry based on its major economic activity being undertaken in the economy, whether or not it is also engaged in other activities in other countries/territories. In deciding whether a Hong Kong firm is a trader or manufacturer, it is the major economic activity which takes place in Hong Kong, but not those economic activities in the Mainland or other places, that determines the classification.

2.2 Firms without the “core” manufacturing functions in Hong Kong are not to be classified as manufacturing firms in Hong Kong, although the firms, or their owners, may own manufacturing establishments in the Mainland. Even if the firms in Hong Kong and the Mainland may be under the same ownership and operate with close relationship, they are separate entities with separate business registrations in the two economies.

2.3 These local firms in question should not be classified statistically as “manufacturing”, or else data users would find the data relating to the “manufacturing sector” difficult to interpret and apply. These firms in Hong Kong do not have many of the characteristics of manufacturing firms. These firms do not have large scale production lines in Hong Kong. They do not employ a large number of operatives in Hong Kong, nor do they consume a large quantity of industrial electricity or water in Hong Kong. Also, they need not be accommodated in industrial buildings.

---

2 HSIC Version 2.0 has been used progressively in different surveys conducted by C&SD as from 2009 to replace HSIC Version 1.1 used in previous rounds of the surveys. To maintain data continuity and comparability before and after implementation of HSIC Version 2.0, C&SD has re-compiled survey results dating back to 2005 in accordance with HSIC Version 2.0. The industrial classification and all figures given in this article, unless otherwise specified, are based on HSIC Version 2.0. For details relating to HSIC Version 2.0, please refer to the relevant feature article published in the November 2008 issue of this *Digest*.

### 3. 從事製造業相關活動的公司的主要統計數字

3.1 自一九九二年進出口貿易業的按年經濟統計調查開始，調查問卷加入了若干問題，藉以搜集有關：（一）分判製造工序予中國內地的安排；及（二）與製造業相關的技術支援服務的資料。這兩方面的主要結果載列於本文內<sup>3</sup>。

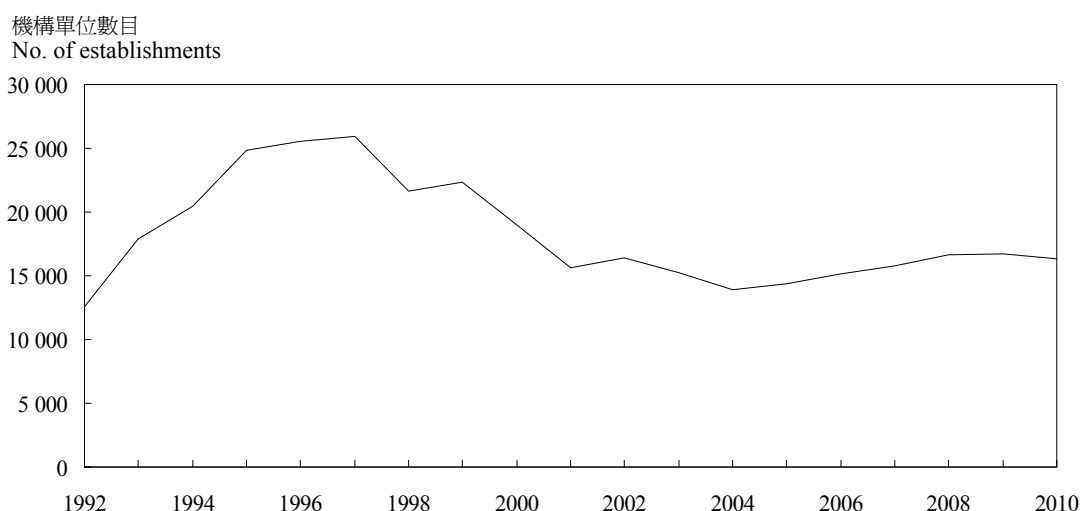
3.2 圖一展示一九九二年至二零一零年從事製造業相關活動的進出口貿易公司<sup>4</sup>的數目<sup>5</sup>。

### 3. Principal Statistics for Firms with Manufacturing-related Activities

3.1 Starting from the 1992 round of the annual economic survey on the import and export trade sector, additional questions have been included in the survey questionnaire to collect information relating to (i) SPAC; and (ii) manufacturing-related technical support services. Key findings on these two aspects are presented in this article<sup>3</sup>.

3.2 Chart 1 presents the number of import and export firms with manufacturing-related activities<sup>4,5</sup> from 1992 to 2010.

圖一 一九九二年至二零一零年從事製造業相關活動的進出口貿易公司的數目  
Chart 1 Number of Import and Export Firms with Manufacturing-related Activities, 1992 to 2010



3 有關一般進出口貿易公司最新情況的進一步分析，可在二零一一年十二月出版的《進出口貿易、批發及零售業以及住宿及膳食服務業的業務表現及營運特色的主要統計數字》報告書中獲取。

4 即從事分判製造工序予中國內地的安排及提供與製造業相關的技術支援服務的進出口貿易公司，當中包括產品設計、製造樣本及工模、生產籌劃、管理及控制，以及其他專業／技術服務。

5 由二零零九統計年開始，統計數字是按「香港標準行業分類 2.0 版」編製，其數列已作出後向估計至二零零五年。早前年份的統計數字是按「香港標準行業分類 1.1 版」編製。就此統計數列而言，由二零零五年起的數字與較早年份的數字仍可作概括比較。

3 Further analyses on the latest situation of import and export firms in general can be obtained from the report *Key Statistics on Business Performance and Operating Characteristics of the Import/export, Wholesale and Retail Trades, and Accommodation and Food Services Sectors* published in December 2011.

4 Referring to import and export firms engaged in SPAC and providing manufacturing-related technical support services which include product design; sample and mould making; production planning, management and control; and other professional/technical services.

5 Starting from the reference year of 2009, the statistics are compiled based on the Hong Kong Standard Industrial Classification (HSIC) Version 2.0 and the series has been backcasted to 2005. For the earlier years, the statistics are compiled based on HSIC Version 1.1. As far as this series of statistics is concerned, figures for 2005 onwards are broadly comparable to those for earlier years.

3.3 表一展示二零零八年至二零一零年期間製造業公司<sup>6</sup>及從事製造業相關活動的進出口貿易公司的選定主要統計數字。

3.3 Table 1 presents selected principal statistics for manufacturing firms<sup>6</sup> and import and export firms with manufacturing-related activities from 2008 to 2010.

表一 二零零八年至二零一零年製造業公司及從事製造業相關活動的進出口貿易公司的選定主要統計數字

**Table 1 Selected Principal Statistics for Manufacturing Firms and Import and Export Firms with Manufacturing-related Activities, 2008 to 2010**

| 公司類別<br>Type of firms   | 年份<br>Year | 機構單位數目<br>No. of establishments<br>(no.) | 就業人數<br>(千人)<br>No. of persons engaged<br>('000) | 增加價值<br>(十億港元)<br>Value added<br>(HK\$ billion) | 銷貨收益<br>(十億港元)<br>Sales revenue<br>(HK\$ billion) |
|---|------------|--|--|---|---|
| (I) 製造業公司<br>Manufacturing firms  | 2008       | 11 418                                   | 122.9  | 33.8  | 154.4   |
|   | 2009       | 10 752                                   | 116.8  | 32.1  | 141.7   |
|   |            | (-5.8%)                                  | (-5.0%)  | (-4.9%)   | (-8.2%)   |
| (II) 透過分判製造工序予中國內地的安排及提供與製造業相關的技術支援服務的進出口貿易公司<br>Import and export firms engaged in SPAC and providing manufacturing-related technical support services | 2008       | 16 639                                   | 118.3  | 82.2  | 780.8   |
|   | 2009       | 16 698                                   | 112.2  | 71.8  | 628.4   |
|   |            | (+0.4%)                                  | (-5.2%)  | (-12.6%)  | (-19.5%)  |
| (a) 以往曾經為製造業公司<br>operated as manufacturing firm before   | 2008       | 3 249                                    | 47.0   | 32.5  | 286.1   |
|   | 2009       | 3 135                                    | 40.6   | 27.5  | 212.4   |
|   |            | (-3.5%)                                  | (-13.6%)   | (-15.4%)  | (-25.8%)  |
| (b) 成立時為進出口貿易公司<br>set up as import and export firm   | 2008       | 3 173                                    | 41.8   | 31.3  | 224.1   |
|   | 2009       | 3 135                                    | 40.6   | 27.5  | 212.4   |
|   |            | (-1.2%)                                  | (-3.0%)  | (-14.0%)  | (-5.5%)   |
| (I) + (II)  | 2008       | 28 058                                   | 241.2  | 115.9   | 935.2   |
|   | 2009       | 27 450                                   | 229.0  | 103.9   | 770.1   |
|   |            | (-2.2%)                                  | (-5.1%)  | (-10.3%)  | (-17.7%)  |
| (II) 在 (I) + (II) 中的百分比<br>(II) as a % of (I) + (II)  | 2008       | 59.3%                                    | 49.0%  | 70.9%   | 83.5%   |
|   | 2009       | 60.8%                                    | 49.0%  | 69.1%   | 81.6%   |
|   | 2010       | 61.3%                                    | 50.5%  | 70.5%   | 78.8%   |
| (III) 其他進出口貿易公司<br>Other import and export firms  | 2008       | 63 530                                   | 347.1  | 265.8   | 2,054.3   |
|   | 2009       | 66 891                                   | 380.6  | 243.9   | 2,018.6   |
|   |            | (+5.3%)                                  | (+9.6%)  | (-8.2%)   | (-1.7%)   |
|   | 2010       | 72 005                                   | 385.7  | 270.7   | 2,458.8   |
|   |            | (+7.6%)                                  | (+1.4%)  | (+11.0%)  | (+21.8%)  |

註釋：(1) 就業人數是指在職東主、在職合夥人、無酬家屬幫工及僱員人數。  
(2) 銷貨收益包括銷售自行生產的貨物和轉售從外購買的貨物所得的收益。此外，有關貨物包括本地生產貨品及透過分判製造工序予中國內地生產的產品。  
(3) 括號內數字代表與去年比較的變動百分率，並以未經進位數字計算。

Notes: (1) No. of persons engaged is the number of working proprietors, active partners, unpaid family workers and employees.  
(2) Sales revenue includes revenue from selling goods produced in-house and those purchased from external parties. Also, it covers goods produced locally and those produced in the Mainland through SPAC.  
(3) Figures in brackets denote percentage changes over the preceding year and are derived from unrounded figures.

6 有關製造業公司最新情況的進一步分析，可在二零一一年十二月出版的《工業的業務表現及營運特色的主要統計數字》報告書中獲取。

6 Further analyses on the latest situation of manufacturing firms can be obtained from the report *Key Statistics on Business Performance and Operating Characteristics of the Industrial Sector* published in December 2011.

## 製造業公司

3.4 隨着香港經濟結構在過往不斷由製造業轉移到服務業，本港製造業公司數目和就業人數持續下跌。二零一零年的製造業機構單位數目為 10 320 間，相對於二零零九年的 10 752 間，下跌 4.0%。與此同時，在二零一零年的就業人數為 111 500 人，較二零零九年的 116 800 人下跌 4.5%。（表一）

3.5 然而，二零一零年製造業公司的銷貨總收益上升 24.3%，由二零零九年的 1,417 億元上升至二零一零年的 1,761 億元。製造業在二零一零年所帶來的增加價值為 350 億元，較二零零九年上升 8.8%。（表一）

## 從事製造業相關活動的進出口貿易公司

3.6 二零一零年，在 88 365 間進出口貿易公司中，18.5%（或 16 360 間）是從事製造業相關活動的貿易公司。在二零零八年及二零零九年，相應百分比分別是 20.8% 及 20.0%。（表一）

3.7 在二零一零年，從事製造業相關活動的貿易公司有 16 360 間，較二零零九年的 16 698 間下跌 2.0%。這些公司在生產過程中提供大量與製造業相關的技術支援服務——產品設計、製造樣本及工模、生產籌劃、管理及控制，以及其他專業／技術服務。（表一）

3.8 然而，這些從事製造業相關活動的貿易公司的就業人數在二零一零年為 113 600 人，較二零零九年的 112 200 人上升 1.3%。（表一）

## Manufacturing firms

3.4 As the structure of Hong Kong economy continued to shift away from manufacturing to services over the past years, the number of establishments and persons engaged in the manufacturing sector in 2010 continued to decline. The number of manufacturing establishments was 10 320 in 2010, representing a decrease of 4.0% compared with 10 752 in 2009. Meanwhile, the number of persons engaged was 111 500 in 2010, representing a decrease of 4.5% compared with 116 800 in 2009. (Table 1)

3.5 Nevertheless, total sales revenue of manufacturing firms increased by 24.3% in 2010, from \$141.7 billion in 2009 to \$176.1 billion in 2010. The value added generated by the manufacturing sector amounted to \$35.0 billion, representing an increase of 8.8% compared with 2009. (Table 1)

## Import and export firms with manufacturing-related activities

3.6 Among the 88 365 import and export firms operated in 2010, 18.5% (or 16 360) of them were trading firms with manufacturing-related activities. This compared to the shares of 20.8% and 20.0% in 2008 and 2009 respectively. (Table 1)

3.7 In 2010, there were 16 360 trading firms with manufacturing-related activities, representing a decrease of 2.0% compared with 16 698 in 2009. These firms were characterised by considerable involvement in the technical aspects of manufacturing processes — product design; sample and mould making; production planning, management and control; and other professional/technical services. (Table 1)

3.8 Nevertheless, the number of persons engaged in these trading firms was 113 600 in 2010, increased by 1.3% as compared with 112 200 in 2009. (Table 1)

3.9 雖然這些進出口公司並沒有在香港從事生產，但它們無疑與製造業有密切的關係。事實上，在二零一零年，這些進出口公司中有 19% 是以往曾在香港進行生產活動，與二零零九年的百分比相若。（表一）

3.9 Although these trading firms did not undertake production work in Hong Kong, there was undoubtedly some relationship between them and the manufacturing sector. In fact, 19% of these firms undertook production activities in Hong Kong previously in 2010, similar to that in 2009. (Table 1)

3.10 在二零一零年，這些貿易公司在不同程度上負責管理總值 6,548 億元產品的生產。有關產品主要在中國內地生產。而本港製造業所生產的總貨值則為 1,761 億元。就經濟貢獻而言，在二零一零年，從事製造業相關活動的貿易公司所帶來的增加價值為 836 億元，而製造業則為 350 億元。但應注意，這些從事製造業相關活動的貿易公司，可能亦有從事傳統的進出口活動，而與分判製造工序予中國內地的安排無關。因此，就它們從事製造業相關活動所帶來的經濟貢獻而言，上述的數字可能有高估的情況。（表一）

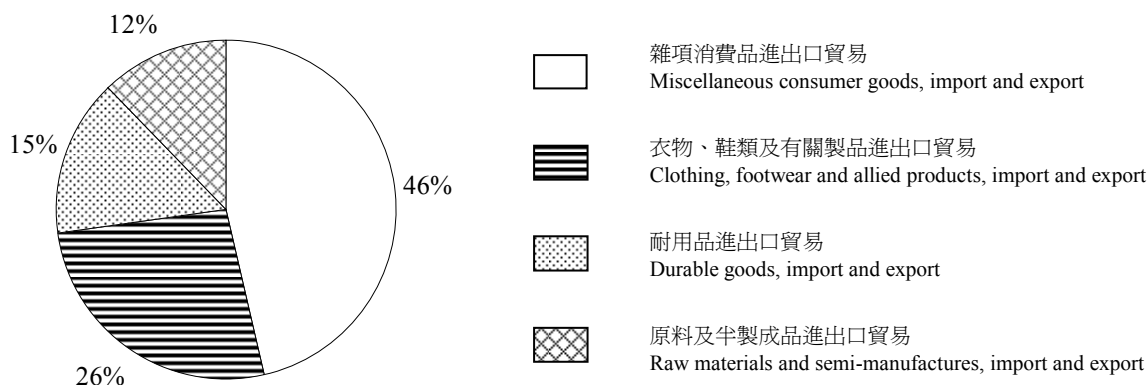
3.10 In 2010, these trading firms were responsible for managing in varying degrees the production of a total of \$654.8 billion of goods, mainly produced in the Mainland, while the corresponding figure for the local manufacturing sector was \$176.1 billion. In terms of contribution to the economy, the trading firms with manufacturing-related activities accounted for \$83.6 billion of value added, as against \$35.0 billion by the manufacturing sector in 2010. However, it should be cautioned that these trading firms with manufacturing-related activities might also be engaged in conventional import and export activities which do not involve SPAC in the Mainland. As such, their contribution in relation to manufacturing-related activities might have been overstated. (Table 1)

3.11 圖二展示二零一零年按行業組別劃分從事製造業相關活動的進出口貿易公司數目百分比。

3.11 Chart 2 presents the percentage distribution of the number of import and export firms with manufacturing-related activities by industry group in 2010.

圖二 二零一零年按行業組別劃分從事製造業相關活動的進出口貿易公司數目百分比

Chart 2 Percentage Distribution of the Number of Import and Export Firms with Manufacturing-related Activities by Industry Group, 2010



3.12 按主要業務性質分析，在二零一零年，從事製造業相關活動的貿易公司大部分為雜項消費品<sup>7</sup>（46%）的進出口貿易公司。其次是從事衣物、鞋類及有關製品進出口貿易（26%）、耐用品<sup>8</sup>進出口貿易（15%），以及原料及半製成品進出口貿易（12%）的公司。（圖二）

3.12 Analysed by principal line of business activity, a significant proportion of the trading firms with manufacturing-related activities in 2010 were importers and/or exporters of miscellaneous consumer goods<sup>7</sup> (46%), followed by those engaged in clothing, footwear and allied products (26%), durable goods<sup>8</sup> (15%), and raw materials and semi-manufactures (12%). (Chart 2)

3.13 表二展示二零零八年至二零一零年從事製造業相關活動的進出口貿易公司就「分判製造工序予中國內地的安排」所提供的服務類別，包括那些不分類為與製造業相關的技術支援服務，例如採購生產物料、品質控制，以及包裝及後勤服務。

3.13 Table 2 presents the types of services rendered in connection with SPAC by import and export firms with manufacturing-related activities from 2008 to 2010, including those not classified as manufacturing-related technical support services such as sourcing of materials, quality control, and packaging and logistics.

表二 二零零八年至二零一零年從事製造業相關活動的進出口貿易公司就「分判製造工序予中國內地的安排」所提供的服務類別  
**Table 2 Types of Services Rendered in Connection with SPAC by Import and Export Firms with Manufacturing-related Activities, 2008 to 2010**

| 就「分判製造工序予中國內地的安排」所提供的服務類別<br>Type of services rendered in connection with SPAC | 提供該類服務的機構單位百分比<br>Percentage of establishments providing the services |      |      |
|--|---|------|------|
|  | 2008  | 2009 | 2010 |
| 採購生產物料<br>Sourcing of materials  | 91  | 88   | 82   |
| 品質控制<br>Quality control  | 82  | 74   | 73   |
| 製造樣本及工模<br>Sample and mould making   | 77  | 66   | 71   |
| 產品設計<br>Product design   | 63  | 65   | 62   |
| 專業及技術服務<br>Professional and technical services                                 | 62  | 57   | 55   |
| 包裝及後勤服務<br>Packaging and logistics   | 57  | 53   | 54   |
| 生產籌劃、管理及控制<br>Production planning, management and control                      | 57  | 62   | 53   |

7 即不包括衣物、鞋類及有關製品的其他消費品。主要包括玩具、家庭產品、化妝品、珠寶首飾、鐘錶、書籍、紙類產品及藥物。

7 These refer to consumer goods other than clothing, footwear and allied products. They mainly include toys, household products, cosmetics, jewellery, watches and clocks, books, paper products and drugs.

8 包括機械、設備及其零件、運輸設備及其他耐用品（例如攝影器材、傢俬、辦公室器材、科學及專業儀器、樂器及衣車等）。

8 They include machinery, equipment and parts, transport equipment and other durable goods such as photographic equipment, furniture, office machines, scientific and professional instrument, musical instrument, sewing machines, etc.

3.14 在各種不同的服務類別中，大部分的貿易公司（約 82%）都有提供「採購生產物料」服務。跟著是「品質控制」（73%）、「製造樣本及工模」（71%）、「產品設計」（62%）、「專業及技術服務」（55%）、「包裝及後勤服務」（54%），以及「生產籌劃、管理及控制」（53%）。（表二）

#### 4. 製造業輔助統計數字

4.1 從事製造業相關活動的進出口貿易公司所產生的增加價值，其實包含了不少與貿易貨品的製造有關的「技術」成份。在一些其他經濟體系，這些與製造業相關的活動可能包括在其他服務行業內，或簡單地包括在製造業內。在香港，它們則包含在從事製造業相關活動的進出口貿易公司內。不少受僱於這類進出口貿易公司的人士，其職業類別可能帶有相當的與生產相關及技術性質。

4.2 當分析香港製造業的活動時，製造業公司和從事製造業相關活動的貿易公司的統計數字可一併考慮。

4.3 將本港製造業公司及從事製造業相關活動的貿易公司合共計算，如表一所示，在二零一零年，機構數目和就業人數較二零零九年分別下跌 2.8%和 1.7%。然而，增加價值和銷貨收益額則分別錄得 14.0%和 7.9%的升幅。

4.4 表三展示二零零八年至二零一零年期間以機構單位數目、就業人數、增加價值，以及銷貨收益計算這兩類公司所佔的百分比。

3.14 Among the different types of services provided, most of the trading firms (about 82%) rendered the service of “sourcing of materials”. This was followed by “quality control” (73%); “sample and mould making” (71%); “product design” (62%); “professional and technical services” (55%); “packaging and logistics” (54%); and “production planning, management control” (53%). (Table 2)

#### 4. Supplementary Statistics for the Manufacturing Sector

4.1 The value added of the import and export firms with manufacturing-related activities has indeed significant “technical” content related to the manufacturing of the goods traded. In some other economies, these manufacturing-related activities tend to be absorbed in other service industries, or simply subsumed in the manufacturing sector. In Hong Kong, they are embedded in import and export firms with manufacturing-related activities. It is likely that a significant proportion of persons employed by these import/export firms are engaged in activities that are production-oriented and technical in nature.

4.2 It would therefore be very useful to consider statistics for manufacturing firms together with those for trading firms with manufacturing-related activities when analysing manufacturing activities in Hong Kong.

4.3 Combining manufacturing firms and trading firms with manufacturing-related activities as shown in Table 1, the number of establishments and the number of persons engaged decreased by 2.8% and 1.7% respectively in 2010 as compared with 2009. Nevertheless, value added and sales revenue increased by 14.0% and 7.9% respectively.

4.4 Table 3 presents the percentage shares of the two types of firms, in terms of number of establishments, number of persons engaged, value added and sales revenue from 2008 to 2010.

表三 二零零八年至二零一零年在選定主要統計數字中製造業公司及從事製造業相關活動的進出口貿易公司所佔百分比

**Table 3 Percentage Shares of Manufacturing Firms and Import and Export Firms with Manufacturing-related Activities in Selected Principal Statistics, 2008 to 2010**

|   |            | 百分比<br>Percent                  |                                |                     |                       |  |
|---|------------|---------------------------------|--------------------------------|---------------------|-----------------------|--|
| 公司類別<br>Type of firms   | 年份<br>Year | 機構單位數目<br>No. of establishments | 就業人數<br>No. of persons engaged | 增加價值<br>Value added | 銷貨收益<br>Sales revenue |  |
| (I) 製造業公司<br>Manufacturing firms  | 2008       | 40.7 (i)                        | 51.0                           | 29.1                | 16.5                  |  |
|   | 2009       | 39.2                            | 51.0                           | 30.9                | 18.4                  |  |
|   | 2010       | 38.7                            | 49.5                           | 29.5                | 21.2                  |  |
| (II) 透過分判製造工序予中國內地的安排及提供與製造業相關的技術支援服務的進出口貿易公司<br>Import and export firms engaged in SPAC and providing manufacturing-related technical support services | 2008       | 59.3 (ii)                       | 49.0                           | 70.9                | 83.5                  |  |
|   | 2009       | 60.8                            | 49.0                           | 69.1                | 81.6                  |  |
|   | 2010       | 61.3                            | 50.5                           | 70.5                | 78.8                  |  |
| (a) 以往曾經為製造業公司<br>operated as manufacturing firm before   | 2008       | 11.6 (iii)                      | 19.5                           | 28.0                | 30.6                  |  |
|   | 2009       | 11.4                            | 17.7                           | 26.4                | 27.6                  |  |
|   | 2010       | 11.9                            | 18.6                           | 26.4                | 27.0                  |  |
| (b) 成立時為進出口貿易公司<br>set up as import and export firm   | 2008       | 47.7 (iv)                       | 29.6                           | 42.8                | 52.9                  |  |
|   | 2009       | 49.4                            | 31.2                           | 42.6                | 54.0                  |  |
|   | 2010       | 49.4                            | 31.9                           | 44.1                | 51.8                  |  |

註釋：(1) 上列統計表內數字的關係舉例說明如下：

(iii) + (iv) = (ii)

(i) + (ii) = 100%

這個關係適用於統計表同一欄內同一年的數字。由於四捨五入關係，統計表內有關的個別項目的數字加起來可能與相應總數略有出入。

(2) 請參閱表一的註釋。

Notes: (1) The following illustrates the relationship of the figures shown in the above table:

(iii) + (iv) = (ii)

(i) + (ii) = 100%

The relationship applies to figures for the same year shown in each column of the table. There may be a slight discrepancy between the sum of related individual items and the corresponding total as shown in the table due to rounding.

(2) See footnotes to Table 1.

4.5 若要全面了解香港的企業家對香港經濟的貢獻，除了分析製造業的統計數字外，亦須同時參考有關從事製造業相關活動的貿易公司的統計數字。

4.5 To fully understand the contribution of Hong Kong entrepreneurs to the economy of Hong Kong, it is necessary to take into account statistics on trading firms with manufacturing-related activities together with those relating to the manufacturing sector.

## 二零一二年一月至三月刊載的專題文章目錄

### List of Feature Articles Published during January to March 2012

| 月份 | 文章題目                                   | Month | Title of Article   |
|----|--|-------|--|
| 1  | (i) 對外直接投資統計                           | 1     | (i) External Direct Investment Statistics  |
|    | (ii) 二零零一年至二零一零年香港國際投資頭寸的要點            |       | (ii) Salient Features of Hong Kong's International Investment Position for the period 2001 to 2010                                 |
|    | (iii) 香港居民婚姻狀況的趨勢                      |       | (iii) Trend in Marital Status of Hong Kong Population  |
| 2  | (i) 香港經濟四個主要行業在二零一零年的情況                | 2     | (i) The Situation of the Four Key Industries in the Hong Kong Economy in 2010  |
|    | (ii) 香港公共圖書館服務概覽                       |       | (ii) An Overview of the Public Library Services in Hong Kong   |
|    | (iii) 香港貨物協調制度二零一二年版                   |       | (iii) Hong Kong Harmonized System 2012 Edition   |
| 3  | (i) 消費物價指數及其在二零零二年至二零一一年間的變動情況         | 3     | (i) Consumer Price Index and Its Movements during 2002 to 2011   |
|    | (ii) 香港六項優勢產業在二零一零年的情況                 |       | (ii) The Situation of the Six Industries in Hong Kong in 2010  |
|    | (iii) 從事分判製造工序的安排及提供與製造業相關的技術支援服務的貿易公司 |       | (iii) Trading Firms Engaging in Sub-contract Processing Arrangement and Providing Manufacturing-related Technical Support Services |

二零一一年期間刊載的專題文章目錄  
List of Feature Articles Published in 2011

| 月份 | 文章題目  | Month | Title of Article  |
|----|---|-------|---|
| 1  | (i) 對外直接投資統計<br>(ii) 二零零九年路運貨物統計<br>(iii) 二零一零年至二零三九年香港家庭住戶推算   | 1     | (i) External direct investment statistics<br>(ii) Road cargo statistics for 2009<br>(iii) Hong Kong domestic household projections for 2010 to 2039   |
| 2  | (i) 二零零四年至二零一零年中層經理級與專業僱員薪金統計數字<br>(ii) 一九九七年至二零零九年的香港地產業<br>(iii) 香港六項優勢產業在二零零八年及二零零九年的情況  | 2     | (i) Salary statistics of middle-level managerial and professional employees 2004 to 2010<br>(ii) The real estate sector in Hong Kong, 1997 to 2009<br>(iii) The situation of the Six Industries in Hong Kong in 2008 and 2009   |
| 3  | (i) 有關香港入境旅遊的旅遊附屬帳戶<br>(ii) 從事製造業相關活動的貿易公司<br>(iii) 二零一零年居住在私營安老院人士的概況  | 3     | (i) Tourism Satellite Account for inbound tourism of Hong Kong<br>(ii) Trading firms with manufacturing-related activities<br>(iii) The profile of persons residing in private elderly homes in 2010  |
| 4  | (i) 香港商品出口貿易分析<br>(ii) 香港的金融服務業<br>(iii) 香港經濟四個主要行業在二零零九年的情況  | 4     | (i) Analysis of Hong Kong's exports of goods<br>(ii) The financial services sector in Hong Kong<br>(iii) The situation of the four key industries in the Hong Kong economy in 2009  |
| 5  | (i) 二零零五年至二零一零年貨櫃統計<br>(ii) 二零一零年失業率的走勢<br>(iii) 香港的進出口貿易、批發及零售業以及住宿及膳食服務業  | 5     | (i) Container statistics, 2005 to 2010<br>(ii) The movement of the unemployment rate in 2010<br>(iii) The import/export, wholesale and retail trades, and accommodation and food services sectors in Hong Kong  |
| 6  | (i) 二零零一年至二零一零年香港國際收支平衡表的要點<br>(ii) 二零一零年香港的中醫藥業<br>(iii) 二零一零年按區議會分區劃分的香港人口概況  | 6     | (i) Salient features of Hong Kong's Balance of Payments account for 2001 to 2010<br>(ii) The Chinese medicine sector in Hong Kong, 2010<br>(iii) The profile of Hong Kong population analysed by District Council district, 2010  |
| 7  | (i) 二零一零年本港居民到中國內地旅行的消費開支<br>(ii) 電子產品及電子行業統計數字<br>(iii) 以二零零九至一零年為基期的消費物價指數  | 7     | (i) Consumption expenditure of Hong Kong residents travelling to the mainland of China, 2010<br>(ii) Statistics on electronic products and the electronics industry<br>(iii) The 2009/10-based Consumer Price Indices   |
| 8  | (i) 香港的境外分支機構服務貿易統計<br>(ii) 二零一零年到中國內地作私人旅行的本港居民的社會經濟特徵<br>(iii) 二零零零年至二零一零年香港在高科技產品對外貿易及技術國際收支平衡方面的情況<br>(iv) 二零零九至一零年住戶開支統計調查結果 | 8     | (i) Foreign affiliates trade in services statistics of Hong Kong<br>(ii) Socio-economic characteristics of Hong Kong residents making personal travel to the mainland of China, 2010<br>(iii) Hong Kong's external trade in high technology products and technology balance of payments, 2000 to 2010<br>(iv) Results of the 2009/10 Household Expenditure Survey |
| 9  | (i) 二零一零年就業綜合估計數字<br>(ii) 內地女性在香港所生的嬰兒<br>(iii) 在中國內地居留的香港長者的特徵   | 9     | (i) Composite Employment Estimates 2010<br>(ii) Babies born in Hong Kong to Mainland women<br>(iii) Characteristics of Hong Kong older persons residing in the mainland of China  |
| 10 | (i) 空運貨物統計<br>(ii) 香港的服務貿易<br>(iii) 吸煙情況  | 10    | (i) Air cargo statistics<br>(ii) Trade in services of Hong Kong<br>(iii) Pattern of smoking   |
| 11 | (i) 二零零零年至二零一零年主要經濟活動的勞工生產力指數<br>(ii) 社會保障援助物價指數  | 11    | (i) Labour Productivity Index for major economic activities, 2000 to 2010<br>(ii) The Social Security Assistance Index of Prices  |
| 12 | (i) 香港 — 知識型經濟<br>(ii) 二零零五年至二零一零年港口貨物統計<br>(iii) 新系列港幣匯率指數   | 12    | (i) Hong Kong as a knowledge-based economy<br>(ii) Port cargo statistics, 2005 to 2010<br>(iii) New series of effective exchange rate index for the Hong Kong dollar  |

## 統計資料來源

### Sources of Statistical Data

| 表<br>Table  | 資料來源<br>Data Source   | 電話<br>Telephone | 電郵<br>E-mail               | 網址<br>Website       |
|-------------|---|-----------------|----------------------------|---------------------|
| <b>1.</b>   | <b>人口<br/>Population</b>  |                 |                            |                     |
| 1.1 - 1.3   | 政府統計處人口統計組<br>Demographic Statistics Section,<br>Census and Statistics Department   | 2716 8345       | population@censtatd.gov.hk | www.censtatd.gov.hk |
| 1.4         | 入境事務處<br>Immigration Department   | 2829 3578       | enquiry@immd.gov.hk        | www.immd.gov.hk     |
| <b>2.</b>   | <b>勞工<br/>Labour</b>  |                 |                            |                     |
| 2.1 - 2.3   | 政府統計處綜合住戶統計調查組<br>General Household Survey Section,<br>Census and Statistics Department   | 2887 5508       | ghs@censtatd.gov.hk        | www.censtatd.gov.hk |
| 2.4 - 2.8   | 政府統計處就業統計及機構記錄組<br>Employment Statistics and Central Register of<br>Establishments Section,<br>Census and Statistics Department | 2582 5076       | employment@censtatd.gov.hk | www.censtatd.gov.hk |
| 2.9 - 2.13  | 政府統計處工資及勞工成本統計組<br>Wages and Labour Costs Statistics Section,<br>Census and Statistics Department                               |                 |                            |                     |
|             | • 工資及勞工收入<br>Wages and labour earnings  | 2887 5550       | wage@censtatd.gov.hk       | www.censtatd.gov.hk |
|             | • 中層經理級與專業僱員薪金<br>Salary for middle-level managerial and<br>professional employees  | 3105 2369       | mpes@censtatd.gov.hk       | www.censtatd.gov.hk |
| 2.14 - 2.16 | 勞工處<br>Labour Department  |                 |                            |                     |
|             | • 職業傷亡<br>Occupational injuries   | 2815 0678       | enquiry@labour.gov.hk      | www.labour.gov.hk   |
|             | • 停工<br>Work stoppage   | 2852 3545       | lrd-hq@labour.gov.hk       | www.labour.gov.hk   |
| <b>3.</b>   | <b>對外貿易<br/>External Trade</b>  |                 |                            |                     |
| 3.1 - 3.14  | 政府統計處貿易資料分析組<br>Trade Analysis Section,<br>Census and Statistics Department   | 2582 4915       | trade@censtatd.gov.hk      | www.censtatd.gov.hk |
| 3.15        | 政府統計處貿易統計調查及研究組<br>Trade Surveys and Research Section,<br>Census and Statistics Department                                      | 2582 5503       | ops@censtatd.gov.hk        | www.censtatd.gov.hk |
| 3.16 - 3.17 | 政府統計處國民收入統計科<br>National Income Branch,<br>Census and Statistics Department   | 2582 5077       | gdp-e@censtatd.gov.hk      | www.censtatd.gov.hk |

## 統計資料來源(續)

### Sources of Statistical Data (cont'd)

| 表<br>Table         | 資料來源<br>Data Source   | 電話<br>Telephone | 電郵<br>E-mail                      | 網址<br>Website               |
|--------------------|---|-----------------|-----------------------------------|-----------------------------|
| <b>4.</b>          | <b>業務表現</b>   |                 |                                   |                             |
|                    | <b>Business Performance</b>   |                 |                                   |                             |
| 4.1 - 4.2          | 政府統計處工業生產統計組<br>Industrial Production Statistics Section,<br>Census and Statistics Department                         | 2805 6643       | ind-production@censtatd.gov.hk    | www.censtatd.gov.hk         |
| 4.3                | 水泥製造公司<br>Cement manufacturing companies  | [1]             | [1]                               | -                           |
|                    | 土木工程拓展署<br>Civil Engineering and Development Department   | [1]             | [1]                               | www.cedd.gov.hk             |
| 4.4                | 政府統計處建造及雜項服務統計組<br>Construction and Miscellaneous Services<br>Statistics Section,<br>Census and Statistics Department | 2805 6426       | building@censtatd.gov.hk          | www.censtatd.gov.hk         |
| 4.5 & 4.6          | 政府統計處經銷服務統計組<br>Distribution Services Statistics Section,<br>Census and Statistics Department                         |                 |                                   |                             |
|                    | • 零售業銷貨額<br>Retail sales  | 2802 1258       | mrs@censtatd.gov.hk               | www.censtatd.gov.hk         |
|                    | • 食肆的收益<br>Restaurant receipts  | 2123 1040       | qsr@censtatd.gov.hk               | www.censtatd.gov.hk         |
| 4.7                | 政府統計處商業服務統計組<br>Business Services Statistics Section,<br>Census and Statistics Department                             | 2123 1046       | business-receipts@censtatd.gov.hk | www.censtatd.gov.hk         |
| 4.8                | 公司註冊處<br>Companies Registry   | 2867 4570       | crenq@cr.gov.hk                   | www.cr.gov.hk               |
|                    | 破產管理署<br>Official Receiver's Office   | 2867 2528       | wwong@oro.gov.hk                  | www.oro.gov.hk              |
| <b>5.</b>          | <b>房屋及物業</b>  |                 |                                   |                             |
|                    | <b>Housing and Property</b>   |                 |                                   |                             |
| 5.1                | 政府統計處普查策劃組<br>Census Planning Section,<br>Census and Statistics Department  | 2716 8305       | cp1@censtatd.gov.hk               | www.censtatd.gov.hk         |
| 5.2 - 5.3<br>& 5.8 | 香港房屋協會<br>Hong Kong Housing Society   | [1]             | [1]                               | www.hkhs.com                |
|                    | 房屋署<br>Housing Department   | [1]             | [1]                               | www.housingauthority.gov.hk |
| 5.4                | 屋宇署<br>Buildings Department   | [1]             | [1]                               | www.bd.gov.hk               |
|                    | 房屋署<br>Housing Department   | [1]             | [1]                               | www.housingauthority.gov.hk |
| 5.5                | 屋宇署<br>Buildings Department   | [1]             | [1]                               | www.bd.gov.hk               |
| 5.6 - 5.7          | 屋宇署<br>Buildings Department   | [1]             | [1]                               | www.bd.gov.hk               |
|                    | 香港房屋協會<br>Hong Kong Housing Society   | [1]             | [1]                               | www.hkhs.com                |
|                    | 房屋署<br>Housing Department   | [1]             | [1]                               | www.housingauthority.gov.hk |

統計資料來源(續)

Sources of Statistical Data (cont'd)

| 表<br>Table  | 資料來源<br>Data Source   | 電話<br>Telephone | 電郵<br>E-mail                  | 網址<br>Website        |
|-------------|---|-----------------|-------------------------------|----------------------|
| <b>5.</b>   | <b>房屋及物業(續)<br/>Housing and Property (cont'd)</b>   |                 |                               |                      |
| 5.9         | 屋宇署<br>Buildings Department   | [1]             | [1]                           | www.bd.gov.hk        |
|             | 差餉物業估價署<br>Rating and Valuation Department  | [1]             | [1]                           | www.rvd.gov.hk       |
| 5.10 - 5.13 | 差餉物業估價署<br>Rating and Valuation Department  | 2150 8903       | enquiries@rvd.gov.hk          | www.rvd.gov.hk       |
| 5.14        | 土地註冊處<br>Land Registry  | 2867 4838       | csa@landreg.gov.hk            | www.landreg.gov.hk   |
| 5.15        | 地政總署<br>Lands Department  | 2525 6694       | landsd@landsd.gov.hk          | www.landsd.gov.hk    |
| <b>6.</b>   | <b>運輸、通訊及旅遊<br/>Transport, Communications and Tourism</b>                                   |                 |                               |                      |
| 6.1         | 民航處<br>Civil Aviation Department  | [1]             | [1]                           | www.cad.gov.hk       |
|             | 香港海關<br>Customs and Excise Department   | 3759 2151       | pk_wan@customs.gov.hk         | www.customs.gov.hk   |
|             | 海事處<br>Marine Department  | 2852 3660       | st-sec@mardep.gov.hk          | www.mardep.gov.hk    |
|             | 香港鐵路有限公司<br>MTR Corporation Limited   | [1]             | [1]                           | www.mtr.com.hk       |
| 6.2         | 民航處<br>Civil Aviation Department  | [1]             | [1]                           | www.cad.gov.hk       |
|             | 香港海關<br>Customs and Excise Department   | 3759 2151       | pk_wan@customs.gov.hk         | www.customs.gov.hk   |
|             | 香港鐵路有限公司<br>MTR Corporation Limited   | [1]             | [1]                           | www.mtr.com.hk       |
|             | 政府統計處船隻及貨運統計組<br>Shipping and Cargo Statistics Section,<br>Census and Statistics Department | 2582 4887       | shipping@censtatd.gov.hk      | www.censtatd.gov.hk  |
| 6.3         | 海事處<br>Marine Department  | 2852 3660       | st-sec@mardep.gov.hk          | www.mardep.gov.hk    |
| 6.4 - 6.6   | 運輸署<br>Transport Department   | 2804 2600       | ttenq@td.gov.hk               | www.td.gov.hk        |
| 6.7         | 香港警務處<br>Hong Kong Police Force   | 2860 6246       | so-stat-traffic@police.gov.hk | www.police.gov.hk    |
| 6.8 - 6.10  | 入境事務處<br>Immigration Department   | 2824 6111       | enquiry@immd.gov.hk           | www.immd.gov.hk      |
| 6.11 - 6.14 | 香港旅遊發展局<br>Hong Kong Tourism Board  | 2807 6543       | research@hktb.com             | www.partnet.hktb.com |
| 6.15 - 6.16 | 電訊管理局<br>Office of the Telecommunications Authority   | 2961 6652       | webmaster@ofta.gov.hk         | www.ofta.gov.hk      |
| 6.17        | 香港郵政<br>Hongkong Post   | 2921 2264       | msd@hkpo.gov.hk               | www.hongkongpost.com |

## 統計資料來源(續)

### Sources of Statistical Data (cont'd)

| 表<br>Table                | 資料來源<br>Data Source  | 電話<br>Telephone | 電郵<br>E-mail          | 網址<br>Website       |
|---------------------------|--|-----------------|-----------------------|---------------------|
| <b>7.</b>                 | <b>政府收支、貨幣及金融<br/>Public Accounts, Money and Finance</b>   |                 |                       |                     |
| 7.1 - 7.9,<br>7.11 & 7.20 | 香港金融管理局<br>Hong Kong Monetary Authority  | 2878 8222       | hkma@hkma.gov.hk      | www.hkma.gov.hk     |
| 7.10                      | 香港金融管理局<br>Hong Kong Monetary Authority  | 2878 8222       | hkma@hkma.gov.hk      | www.hkma.gov.hk     |
|                           | 香港銀行同業結算有限公司<br>Hong Kong Interbank Clearing Limited   | [1]             | [1]                   | www.hkicl.com.hk    |
| 7.12 - 7.13               | 香港金融管理局<br>Hong Kong Monetary Authority  | 2878 8222       | hkma@hkma.gov.hk      | www.hkma.gov.hk     |
|                           | 政府統計處貿易資料分析組<br>Trade Analysis Section,<br>Census and Statistics Department                                  | 2582 4918       | trade@censtatd.gov.hk | www.censtatd.gov.hk |
| 7.14                      | 恒生指數有限公司<br>Hang Seng Indexes Company Limited  | 2877 0704       | info@hsi.com.hk       | www.hsi.com.hk      |
|                           | 香港交易及結算所有限公司<br>Hong Kong Exchanges and Clearing Limited   | [1]             | [1]                   | www.hkex.com.hk     |
| 7.15 - 7.16               | 香港交易及結算所有限公司<br>Hong Kong Exchanges and Clearing Limited   | [1]             | [1]                   | www.hkex.com.hk     |
| 7.17 - 7.18               | 金銀業貿易場<br>The Chinese Gold and Silver Exchange Society   | [1]             | [1]                   | www.cgse.com.hk     |
| 7.19                      | 政府總部財經事務及庫務局<br>Financial Services and the Treasury Bureau,<br>Government Secretariat                        | 2810 3658       | aoiihl@fstb.gov.hk    | www.fstb.gov.hk     |
| <b>8.</b>                 | <b>國民收入及國際收支平衡<br/>National Income and Balance of Payments</b>   |                 |                       |                     |
| 8.1 - 8.6                 | 政府統計處國民收入統計科<br>National Income Branch,<br>Census and Statistics Department                                  |                 |                       |                     |
|                           | • 按開支組成部分劃分的本地生產總值<br>Gross Domestic Product by expenditure<br>component                                     | 2582 5077       | gdp-e@censtatd.gov.hk | www.censtatd.gov.hk |
|                           | • 按經濟活動劃分的本地生產總值<br>Gross Domestic Product by economic<br>activity   | 2116 5115       | gdp-p@censtatd.gov.hk | www.censtatd.gov.hk |
| 8.7 - 8.13                | 政府統計處國際收支平衡統計科<br>Balance of Payments Branch,<br>Census and Statistics Department                            |                 |                       |                     |
|                           | • 本地居民生產總值及對外要素收益流動<br>Gross National Product and External<br>Factor Income Flows                            | 2116 5102       | gnp@censtatd.gov.hk   | www.censtatd.gov.hk |
|                           | • 國際收支平衡表、國際投資頭寸及對外債務<br>Balance of Payments account, International<br>Investment Position and External Debt | 2116 8677       | bop@censtatd.gov.hk   | www.censtatd.gov.hk |

## 統計資料來源(續)

### Sources of Statistical Data (cont'd)

| 表<br>Table         | 資料來源<br>Data Source   | 電話<br>Telephone | 電郵<br>E-mail                   | 網址<br>Website       |
|--------------------|---|-----------------|--------------------------------|---------------------|
| <b>9.</b>          | <b>物價<br/>Prices</b>  |                 |                                |                     |
| 9.1 - 9.6<br>& 9.8 | 政府統計處消費物價指數組<br>Consumer Price Index Section,<br>Census and Statistics Department                         | 2805 6403       | cpi@censtatd.gov.hk            | www.censtatd.gov.hk |
| 9.7                | 漁農自然護理署<br>Agriculture, Fisheries and Conservation Department   | [1]             | [1]                            | www.afcd.gov.hk     |
| 9.9                | 政府統計處工業生產統計組<br>Industrial Production Statistics Section,<br>Census and Statistics Department             | 2805 6643       | ind-production@censtatd.gov.hk | www.censtatd.gov.hk |
| 9.10               | 政府統計處物流及生產者價格統計組<br>Logistics and Producer Prices Statistics Section,<br>Census and Statistics Department | 2123 1038       | services@censtatd.gov.hk       | www.censtatd.gov.hk |
| <b>10.</b>         | <b>能源<br/>Energy</b>  |                 |                                |                     |
| 10.1 - 10.4        | 政府統計處工業生產統計組<br>Industrial Production Statistics Section,<br>Census and Statistics Department             | 2882 4208       | energy@censtatd.gov.hk         | www.censtatd.gov.hk |
| <b>11.</b>         | <b>其他統計<br/>Other Statistics</b>  |                 |                                |                     |
| 11.1               | 衛生署<br>Department of Health   | 2961 8582       | enquiries@dh.gov.hk            | www.dh.gov.hk       |
|                    | 醫院管理局<br>Hospital Authority   | 2300 6371       | enquiry@ha.org.hk              | www.ha.org.hk       |
| 11.2               | 衛生署衛生防護中心<br>Centre for Health Protection,<br>Department of Health  | 2125 2270       | enquiries@dh.gov.hk            | www.dh.gov.hk       |
| 11.3 - 11.6        | 社會福利署<br>Social Welfare Department  |                 |                                |                     |
|                    | • 社會保障計劃<br>Social security schemes   | 2892 5232       | rsenq@swd.gov.hk               | www.swd.gov.hk      |
|                    | • 綜合家庭服務中心<br>Integrated Family Service Centres   | 2892 5230       | rsenq@swd.gov.hk               | www.swd.gov.hk      |
|                    | • 安老服務<br>Services for the elderly  | 2892 5236       | rsenq@swd.gov.hk               | www.swd.gov.hk      |
| 11.7               | 香港警務處<br>Hong Kong Police Force   | 2860 8448       | [2]                            | www.police.gov.hk   |
|                    | 廉政公署<br>Independent Commission Against Corruption   | 2826 3267       | nlkwok@crd.icac.org.hk         | www.icac.org.hk     |
| 11.8 - 11.9        | 康樂及文化事務署<br>Leisure and Cultural Services Department  | 2414 5555       | enquiries@lcsd.gov.hk          | www.lcsd.gov.hk     |
| 11.10              | 食物環境衛生署<br>Food and Environmental Hygiene Department  | 2923 5302       | enquiries@fehd.gov.hk          | www.fehd.gov.hk     |
|                    | 康樂及文化事務署<br>Leisure and Cultural Services Department  | 2414 5555       | enquiries@lcsd.gov.hk          | www.lcsd.gov.hk     |

## 統計資料來源(續)

### Sources of Statistical Data (cont'd)

| 表<br>Table | 資料來源<br>Data Source                          | 電話<br>Telephone | 電郵<br>E-mail       | 網址<br>Website    |
|------------|--|-----------------|--------------------|------------------|
| <b>11.</b> | <b>其他統計(續)<br/>Other Statistics (cont'd)</b> |                 |                    |                  |
| 11.11      | 香港天文台<br>Hong Kong Observatory               | 2926 8444       | mailbox@hko.gov.hk | www.hko.gov.hk   |
| 11.12      | 消防處<br>Fire Services Department              | 2733 7717       | stat@hkfsd.gov.hk  | www.hkfsd.gov.hk |
| 11.13      | 水務署<br>Water Supplies Department             | 2829 4463       | wsdinfo@wsd.gov.hk | www.wsd.gov.hk   |

註釋：[1] 有關統計資料的查詢，請聯絡政府統計處（電話：2582 4738；電郵：gen-enquiry@censtatd.gov.hk）。

[2] 有關統計資料的查詢，可以透過香港警務處互聯網(www.police.gov.hk)內的「申請索取資料」部分提出。

Notes: [1] Enquiries on the statistical data can be directed to the Census and Statistics Department (telephone number : 2582 4738; e-mail : gen-enquiry@censtatd.gov.hk).

[2] Enquiries on the statistical data can be made via the "Application for Access to Information" section on the website of Hong Kong Police Force (www.police.gov.hk).

二零一二年四月至七月  
政府統計處定期性統計數據發布日期一覽表  
**Schedule for Issuing Regular Releases of Statistical Data by  
the Census and Statistics Department, April to July 2012**

每年九月底，本處會向傳媒公布翌年定期性統計數據新聞發布的詳細時間表。本附錄載列未來四個月的發布日期。數據於發布日期下午四時三十分向傳媒公布。有關的新聞公布於稍後時間載列於政府統計處的網站上(www.censtatd.gov.hk)。發布日期下午四時三十分後致電本處，亦可查詢有關統計數據。

The date schedule for issuing regular press releases of statistical data in the ensuing year is issued to the mass media in end September of each year. This Annex gives the schedule for the coming four months. Data are issued to the media at 4:30 p.m. on the date of release. The press releases are posted shortly afterwards on the Department's website (www.censtatd.gov.hk). Telephone enquiries may also be made to the Department after 4:30 p.m. on the release date.

| 統計數據<br>Statistical Data  | 發布日期 (日/月/年)<br>Release Date (DD/MM/YYYY) |
|---|---|
| <b>勞工統計</b><br><b>Labour Statistics</b>                                       |   |
| 1. 失業及就業不足統計<br>Unemployment and Underemployment Statistics                   |   |
| • 二零一二年一月至三月<br>January to March 2012   | 19.04.2012                                |
| • 二零一二年二月至四月<br>February to April 2012  | 17.05.2012                                |
| • 二零一二年三月至五月<br>March to May 2012   | 18.06.2012                                |
| • 二零一二年四月至六月<br>April to June 2012  | 19.07.2012                                |
| 如有查詢，請致電 2887 5506。<br>For enquiries, please call 2887 5506.                  |   |
| 2. 就業及職位空缺統計<br>Employment and Vacancies Statistics                           |   |
| • 二零一二年三月<br>March 2012   | 21.06.2012                                |
| 如有查詢，請致電 2582 4751。<br>For enquiries, please call 2582 4751.                  |   |
| 3. 薪金總額及工資統計<br>Payroll and Wage Statistics                                   |   |
| • 二零一二年第一季<br>1st Quarter 2012  | 28.06.2012                                |
| 如有查詢，請致電 2887 5584。<br>For enquiries, please call 2887 5584.                  |   |
| <b>對外貿易統計</b><br><b>External Trade Statistics</b>                             |   |
| 1. 對外商品貿易統計<br>External Merchandise Trade Statistics                          |   |
| • 二零一二年三月<br>March 2012   | 24.04.2012                                |
| • 二零一二年四月<br>April 2012   | 24.05.2012                                |
| • 二零一二年五月<br>May 2012   | 26.06.2012                                |
| • 二零一二年六月<br>June 2012  | 24.07.2012                                |
| 如有查詢，請致電 2582 4914。<br>For enquiries, please call 2582 4914.                  |   |
| 2. 對外商品貿易貨量及價格統計<br>Volume and Price Statistics of External Merchandise Trade |   |
| • 二零一二年二月<br>February 2012  | 19.04.2012                                |
| • 二零一二年三月<br>March 2012   | 15.05.2012                                |
| • 二零一二年四月<br>April 2012   | 19.06.2012                                |
| • 二零一二年五月<br>May 2012   | 17.07.2012                                |
| 如有查詢，請致電 2582 4914。<br>For enquiries, please call 2582 4914.                  |   |

## 對外貿易統計 (續)

### External Trade Statistics (cont'd)

|    |   |   |            |
|----|---|---|------------|
| 3. | 船隻、港口貨物及貨櫃統計<br>• 二零一二年第一季<br>如有查詢，請致電 2582 4889。   | Statistics on Vessels, Port Cargo and Containers<br>1st Quarter 2012<br><i>For enquiries, please call 2582 4889.</i>                          | 07.06.2012 |
| 4. | 涉及外發中國內地加工貿易統計<br>• 二零一二年第一季<br>如有查詢，請致電 2582 5255。 | Statistics on Trade Involving Outward Processing in the Mainland of China<br>1st Quarter 2012<br><i>For enquiries, please call 2582 5255.</i> | 18.06.2012 |

## 國民收入及國際收支平衡統計

### National Income and Balance of Payments Statistics

|    |  |  |            |
|----|--|--|------------|
| 1. | 本地生產總值<br>• 二零一二年第一季(1)<br>如有查詢，請致電 2582 4787。             | Gross Domestic Product<br>1st Quarter 2012(1)<br><i>For enquiries, please call 2582 4787.</i>  | 11.05.2012 |
| 2. | 以環比物量計算按經濟活動劃分的本地生產總值<br>• 二零一二年第一季<br>如有查詢，請致電 2116 5188。 | Chain Volume Measures of Gross Domestic Product by Economic Activity<br>1st Quarter 2012<br><i>For enquiries, please call 2116 5188.</i> | 19.06.2012 |
| 3. | 本地居民生產總值及對外要素收益流動數字<br>• 二零一二年第一季<br>如有查詢，請致電 2116 5101。   | Gross National Product and External Factor Income Flows<br>1st Quarter 2012<br><i>For enquiries, please call 2116 5101.</i>              | 14.06.2012 |
| 4. | 國際收支平衡及國際投資頭寸統計<br>• 二零一二年第一季<br>如有查詢，請致電 2116 8660。       | Balance of Payments and International Investment Position Statistics<br>1st Quarter 2012<br><i>For enquiries, please call 2116 8660.</i> | 21.06.2012 |

## 物價統計

### Price Statistics

|    |   |   |  |
|----|---|---|--|
| 1. | 消費物價指數<br>• 二零一二年三月<br>• 二零一二年四月<br>• 二零一二年五月<br>• 二零一二年六月<br>如有查詢，請致電 2805 6401。 | Consumer Price Index<br>March 2012<br>April 2012<br>May 2012<br>June 2012<br><i>For enquiries, please call 2805 6401.</i> | 23.04.2012<br>22.05.2012<br>21.06.2012<br>23.07.2012 |
|----|---|---|--|

註： (1) 財政司司長辦公室轄下的經濟分析及方便營商處的經濟分析部發布有關二零一二年第一季經濟報告及二零一二年全年本地生產總值暨物價預測第一次修訂的新聞稿時，二零一二年第一季本地生產總值亦於該新聞稿中發布。政府統計處不會在當日就二零一二年第一季的本地生產總值另發新聞稿。

Note: (1) The Economic Analysis Division of the Economic Analysis and Business Facilitation Unit under the Financial Secretary's Office will issue a press release on the First Quarter Economic Report 2012 and first update of GDP and prices forecasts for 2012 as a whole. The GDP for the first quarter of 2012 will also be released there. No separate press release on the GDP for the first quarter of 2012 will be issued by the Census and Statistics Department on that day.

其他各類統計

Various Other Types of Statistics

|                     |   |            |
|---------------------|---|------------|
| 1. 零售業銷貨額統計         | Retail Sales Statistics   |            |
| • 二零一二年三月           | March 2012  | 03.05.2012 |
| • 二零一二年四月           | April 2012  | 31.05.2012 |
| • 二零一二年五月           | May 2012  | 03.07.2012 |
| 如有查詢，請致電 2802 1367。 | <i>For enquiries, please call 2802 1367.</i>  |            |
| 2. 工業生產指數和工業生產者價格指數 | Index of Industrial Production and Producer Price Indices for the Industrial Sector |            |
| • 二零一二年第一季          | 1st Quarter 2012  | 14.06.2012 |
| 如有查詢，請致電 2805 6641。 | <i>For enquiries, please call 2805 6641.</i>  |            |
| 3. 建造工程完成量統計        | Construction Output Statistics  |            |
| • 二零一二年第一季          | 1st Quarter 2012  | 12.06.2012 |
| 如有查詢，請致電 2805 6424。 | <i>For enquiries, please call 2805 6424.</i>  |            |
| 4. 食肆收益及購貨額統計       | Restaurant Receipts and Purchases Statistics  |            |
| • 二零一二年第一季          | 1st Quarter 2012  | 03.05.2012 |
| 如有查詢，請致電 2802 1367。 | <i>For enquiries, please call 2802 1367.</i>  |            |
| 5. 服務行業按季業務收益指數     | Quarterly Business Receipts Indices for Service Industries                          |            |
| • 二零一二年第一季          | 1st Quarter 2012  | 11.06.2012 |
| 如有查詢，請致電 2802 1269。 | <i>For enquiries, please call 2802 1269.</i>  |            |
| 6. 按季業務展望統計調查結果     | Results of the Quarterly Business Tendency Survey                                   |            |
| • 二零一二年第二季          | 2nd Quarter 2012  | 27.04.2012 |
| • 二零一二年第三季          | 3rd Quarter 2012  | 20.07.2012 |
| 如有查詢，請致電 2805 6119。 | <i>For enquiries, please call 2805 6119.</i>  |            |

政府統計處刊物一覽 (截至二零一二年三月一日)

List of Publications of the Census and Statistics Department (as at 1.3.2012)

| 名稱   | Title   | 最新期號<br>Latest Issue | 印刷版售價(港元)<br>Price of Print Version (HK\$) |  |
|--|---|----------------------|--|--|
|  |   |                      | 不包括<br>郵費<br>Not<br>Including<br>Postage   | 連本地<br>郵費<br>Including<br>Local<br>Postage |
| <b>綜合性統計刊物</b>   |   |                      |  |  |
| <b>General Statistical Digests</b>                       |   |                      |  |  |
| 香港經濟趨勢 (半月刊) (1)   | Hong Kong Economic Trends (half-monthly)(1)   | 30/12/2011           | -  | -  |
| 香港統計月刊   | Hong Kong Monthly Digest of Statistics  | 2/2012               | -  | -  |
| 香港統計年刊 (2)   | Hong Kong Annual Digest of Statistics(2)  | 2011                 | 346.0                                      | 374.0                                      |
| 香港社會及經濟趨勢 (雙年刊) (2)(3)                                   | Hong Kong Social and Economic Trends (biennial)(2)(3)   | 2009                 | 294.0                                      | 310.4                                      |
| 香港統計數字一覽 (年刊) (4)  | Hong Kong in Figures (annual)(4)  | 2012                 | <-----免費 Free ----->                       | >  |
| 香港的發展(1967 - 2007)－統計圖表集<br>(特刊) (2)                     | A Graphic Guide on Hong Kong's Development (1967 - 2007) (ad hoc)(2)                          | -                    | 66.0                                       | 82.4                                       |
| <b>人口</b>  |   |                      |  |  |
| <b>Population</b>  |   |                      |  |  |
| <b>人口統計</b>  |   |                      |  |  |
| <b>Demographics</b>                                      |   |                      |  |  |
| 按區議會分區劃分的人口及住戶統計資料<br>(年刊)                               | Population and Household Statistics Analysed by District Council District (annual)            | 2010                 | -  | -  |
| 香港人口趨勢 1981-2006 (特刊)                                    | Demographic Trends in Hong Kong 1981 - 2006 (ad hoc)  | -                    | 55.0                                       | 63.2                                       |
| <b>香港二零一一年人口普查</b>                                       |   |                      |  |  |
| <b>Hong Kong 2011 Population Census</b>                  |   |                      |  |  |
| 二零一一年人口普查 (特刊)   | 2011 Population Census (ad hoc)   | -                    | -  | -  |
| 簡要報告   | Summary Results   | -                    | 238.0                                      | 254.4                                      |
| <b>香港二零零六年中期人口統計</b>                                     |   |                      |  |  |
| <b>Hong Kong 2006 Population By-census</b>               |   |                      |  |  |
| 二零零六年中期人口統計 (特刊)   | 2006 Population By-census (ad hoc)  | -                    | -  | -  |
| 主要報告－第一冊   | Main Report – Volume I  | -                    | 143.0                                      | 159.4                                      |
| 主要報告－第二冊   | Main Report – Volume II   | -                    | 118.0                                      | 134.4                                      |
| 主要統計表  | Main Tables   | -                    | 138.0                                      | 166.0                                      |
| 簡要報告   | Summary Results   | -                    | 41.0                                       | 49.2                                       |
| 統計圖解   | Graphic Guide   | -                    | 91.0                                       | 99.2                                       |
| 有關各區議會分區的基本統計表   | Basic Tables for District Council Districts   | -                    | 50.0                                       | 58.2                                       |
| 有關香港島各選區的基本統計表   | Basic Tables for Constituency Areas : Hong Kong Island  | -                    | 84.0                                       | 100.4                                      |
| 有關九龍各選區的基本統計表  | Basic Tables for Constituency Areas : Kowloon   | -                    | 112.0                                      | 128.4                                      |
| 有關新界各選區的基本統計表  | Basic Tables for Constituency Areas : New Territories   | -                    | 180.0                                      | 208.0                                      |
| 區議會分區及選區統計表的附件－<br>區域分界地圖                                | Boundary Maps Complementary to Tables for District Council Districts and Constituency Areas   | -                    | 134.0                                      | 162.0                                      |
| 有關各小規劃統計區的基本統計表  | Basic Tables for Tertiary Planning Units  | -                    | 274.0                                      | 302.0                                      |
| 小規劃統計區統計表的附件－區域<br>分界地圖                                  | Boundary Maps Complementary to Tables for Tertiary Planning Units                             | -                    | 80.0                                       | 88.2                                       |
| 主題性報告－香港的住戶收入分布  | Thematic Report – Household Income Distribution in Hong Kong                                  | -                    | 114.0                                      | 122.2                                      |
| 主題性報告－少數族裔人士   | Thematic Report – Ethnic Minorities   | -                    | 96.0                                       | 104.2                                      |
| 主題性報告－內地來港定居未足七年<br>人士                                   | Thematic Report – Persons from the Mainland Having Resided in Hong Kong for Less Than 7 Years | -                    | 82.0                                       | 90.2                                       |
| 主題性報告－青年   | Thematic Report – Youths  | -                    | 74.0                                       | 82.2                                       |
| 主題性報告－長者   | Thematic Report – Older Persons   | -                    | 88.0                                       | 96.2                                       |
| 主題性報告－單親人士   | Thematic Report – Single Parents  | -                    | 88.0                                       | 96.2                                       |
| <b>性別統計</b>  |   |                      |  |  |
| <b>Gender Statistics</b>                                 |   |                      |  |  |
| 香港的女性及男性－主要統計數字<br>(年刊)                                  | Women and Men in Hong Kong – Key Statistics (annual)  | 2011                 | -  | -  |
| <b>人口推算</b>  |   |                      |  |  |
| <b>Population Projections</b>                            |   |                      |  |  |
| 香港人口推算 2010-2039 (特刊)                                    | Hong Kong Population Projections 2010 - 2039 (ad hoc)   | -                    | 44.0                                       | 52.2                                       |
| 香港人口生命表 2004-2039 (特刊)                                   | Hong Kong Life Tables 2004 - 2039 (ad hoc)  | -                    | 52.0                                       | 56.4                                       |
| <b>勞工</b>  |   |                      |  |  |
| <b>Labour</b>  |   |                      |  |  |
| <b>勞動人口、就業及空缺統計</b>                                      |   |                      |  |  |
| <b>Labour Force, Employment and Vacancies Statistics</b> |   |                      |  |  |
| 綜合住戶統計調查按季統計報告   | Quarterly Report on General Household Survey  | 7-9/2011             | -  | -  |
| 就業及空缺按季統計報告  | Quarterly Report of Employment and Vacancies Statistics                                       | 9/2011               | -  | -  |
| 建築地盤就業及空缺按季統計報告  | Quarterly Report of Employment and Vacancies at Construction Sites                            | 9/2011               | -  | -  |

政府統計處刊物一覽 (截至二零一二年三月一日) (續)

List of Publications of the Census and Statistics Department (as at 1.3.2012) (cont'd)

| 名稱   | Title   | 最新期號<br>Latest Issue | 印刷版售價(港元)<br>Price of Print Version (HK\$) |  |
|--|---|----------------------|--|--|
|  |   |                      | 不包括<br>郵費<br>Not<br>Including<br>Postage   | 連本地<br>郵費<br>Including<br>Local<br>Postage |
| <b>勞工 (續)</b>                                | <b>Labour (cont'd)</b>  |                      |  |  |
| <b>工資及勞工收入統計</b>                             | <b>Wages and Labour Earnings Statistics</b>   |                      |  |  |
| 由主要承建商填報有關從事公營建築工程的工人的每日平均工資 (月刊)            | Average Daily Wages of Workers Engaged in Public Sector Construction Projects as Reported by Main Contractors (monthly)   | 11/2011              | -  | -  |
| 工資及薪金總額按季統計報告                                | Quarterly Report of Wage and Payroll Statistics   | 9/2011               | -  | -  |
| 經理級與專業僱員薪金及僱員福利統計報告 (高層管理人員除外) (年刊)          | Report of Salaries and Employee Benefits Statistics Managerial and Professional Employees (Excluding Top Management) (annual)                                       | 2011                 | -  | -  |
| 收入及工時按年統計調查報告                                | Report on Annual Earnings and Hours Survey  | 2010                 | -  | -  |
| <b>人力統計</b>                                  | <b>Manpower Statistics</b>  |                      |  |  |
| 二零零二年人力培訓及工作技能需求機構單位統計調查報告 (特刊)              | Report on 2002 Establishment Survey on Manpower Training and Job Skills Requirements (ad hoc)   | -                    | 48.0                                       | 56.2                                       |
| <b>其他社會資料</b>                                | <b>Other Social Data</b>  |                      |  |  |
| 從綜合住戶統計調查搜集所得的社會資料第五十八號專題報告書 (特刊) : 就業人士轉工情況 | Social Data Collected via the General Household Survey Special Topics Report No. 58 (ad hoc) : Job-changing of employed persons                                     | -                    | -  | -  |
| 主題性住戶統計調查第四十九號報告書 (特刊) : 國際學校學額的供應           | Thematic Household Survey Report No. 49 (ad hoc) : Provision of international school places   | -                    | -  | -  |
| 數碼地面電視普及情況                                   | Digital terrestrial television take-up  |                      |  |  |
| 新媒體的使用情況                                     | Use of new media  |                      |  |  |
| <b>對外貿易</b>                                  | <b>External Trade</b>   |                      |  |  |
| <b>商品貿易統計</b>                                | <b>Merchandise Trade Statistics</b>   |                      |  |  |
| 香港商品貿易統計 :                                   | Hong Kong Merchandise Trade Statistics :  |                      |  |  |
| 進口 (月刊)                                      | Imports (monthly)   | 12/2011              | -  | -  |
| 港產品出口及轉口 (月刊)                                | Domestic Exports and Re-exports (monthly)   | 12/2011              | -  | -  |
| 周年附刊, 按國家及貨品劃分 :                             | Annual Supplement, Country by Commodity :   |                      |  |  |
| - 進口   | - Imports   | 2011                 | -  | -  |
| - 港產品出口及轉口                                   | - Domestic Exports and Re-exports   | 2011                 | -  | -  |
| 香港對外商品貿易 (月刊)                                | Hong Kong External Merchandise Trade (monthly)  | 12/2011              | -  | -  |
| 香港商品貿易指數 (月刊)                                | Hong Kong Merchandise Trade Index Numbers (monthly)   | 12/2011              | -  | -  |
| 香港對外商品貿易回顧 (年刊)                              | Annual Review of Hong Kong External Merchandise Trade (annual)  | 2010                 | 192.0                                      | 200.2                                      |
| <b>服務貿易統計</b>                                | <b>Trade in Services Statistics</b>   |                      |  |  |
| 香港服務貿易統計報告 (年刊)                              | Report on Hong Kong Trade in Services Statistics (annual)   | 2010                 | -  | -  |
| <b>業務表現</b>                                  | <b>Business Performance</b>   |                      |  |  |
| <b>業務展望</b>                                  | <b>Business Prospects</b>   |                      |  |  |
| 業務展望按季統計調查報告                                 | Report on Quarterly Business Tendency Survey  | Q1/2012              | -  | -  |
| <b>工業生產</b>                                  | <b>Industrial Production</b>  |                      |  |  |
| 工業生產按季指數                                     | Quarterly Index of Industrial Production  | Q3/2011              | -  | -  |
| 工業的業務表現及營運特色的主要統計數字                          | Key Statistics on Business Performance and Operating Characteristics of the Industrial Sector   | 2010                 | -  | -  |
| <b>進出口貿易、批發及零售業以及住宿及膳食服務業</b>                | <b>Import/Export, Wholesale and Retail Trades, and Accommodation and Food Services Sectors</b>  |                      |  |  |
| 零售業銷貨額按月統計調查報告                               | Report on Monthly Survey of Retail Sales  | 1/2012               | -  | -  |
| 食肆的收入及購貨額按季統計調查報告                            | Report on Quarterly Survey of Restaurant Receipts and Purchases   | Q4/2011              | -  | -  |
| 進出口貿易、批發及零售業以及住宿及膳食服務業的業務表現及營運特色的主要統計數字      | Key Statistics on Business Performance and Operating Characteristics of the Import/Export, Wholesale and Retail Trades, and Accommodation and Food Services Sectors | 2010                 | -  | -  |

政府統計處刊物一覽 (截至二零一二年三月一日) (續)

List of Publications of the Census and Statistics Department (as at 1.3.2012) (cont'd)

| 名稱  | Title  | 最新期號<br>Latest Issue | 印刷版售價(港元)<br>Price of Print Version (HK\$) |  |
|---|--|----------------------|--|--|
|   |  |                      | 不包括<br>郵費<br>Not<br>Including<br>Postage   | 連本地<br>郵費<br>Including<br>Local<br>Postage |
| <b>業務表現 (續)</b>                               | <b>Business Performance (cont'd)</b>   |                      |  |  |
| <b>屋宇建築、建造及地產業</b>                            | <b>Building, Construction and Real Estate Sectors</b>  |                      |  |  |
| 公營建築工程的工資及材料成本指數<br>(1995年6月=100) (月刊)        | Index Numbers of the Costs of Labour and Materials Used in<br>Public Sector Construction Projects (June 1995=100)<br>(monthly)   | 11/2011              | -  | -  |
| 公營建築工程的工資及材料成本指數<br>(2003年4月=100) (月刊)        | Index Numbers of the Costs of Labour and Materials Used in<br>Public Sector Construction Projects (April 2003=100)<br>(monthly)  | 11/2011              | -  | -  |
| 建造工程完成量按季統計調查報告                               | Report on the Quarterly Survey of Construction Output  | Q3/2011              | -  | -  |
| 屋宇建築、建造及地產業的業務表現及<br>營運特色的主要統計數字              | Key Statistics on Business Performance and Operating<br>Characteristics of the Building, Construction and Real<br>Estate Sectors   | 2010                 | -  | -  |
| <b>運輸、倉庫及速遞服務業</b>                            | <b>Transportation, Storage and Courier Services Sector</b>   |                      |  |  |
| 運輸、倉庫及速遞服務業的業務表現及<br>營運特色的主要統計數字              | Key Statistics on Business Performance and Operating<br>Characteristics of the Transportation, Storage and Courier<br>Services Sector  | 2010                 | -  | -  |
| <b>資訊及通訊、金融及保險、專業及商用<br/>服務業</b>              | <b>Information and Communications, Financing and<br/>Insurance, Professional and Business Services Sectors</b>   |                      |  |  |
| 服務行業按季業務收益指數                                  | Quarterly Business Receipts Indices for Service Industries   | Q3/2011              | -  | -  |
| 服務業統計摘要按季補充資料                                 | Quarterly Supplement to Statistical Digest of the Services<br>Sector   | Q3/2011              | -  | -  |
| 資訊及通訊、金融及保險、專業及商用<br>服務業的業務表現及營運特色的主要<br>統計數字 | Key Statistics on Business Performance and Operating<br>Characteristics of the Information and Communications,<br>Financing and Insurance, Professional and Business<br>Services Sectors | 2010                 | -  | -  |
| 服務業統計摘要 (年刊)                                  | Statistical Digest of the Services Sector (annual)   | 2011                 | -  | -  |
| 二零零九年檢測及認證活動統計<br>調查報告 (特刊)                   | Report on the 2009 Survey of Testing and Certification<br>Activities (ad hoc)  | -                    | -  | -  |
| <b>駐港地區總部及地區辦事處</b>                           | <b>Regional Headquarters and Offices</b>   |                      |  |  |
| 代表香港境外母公司的駐港公司<br>按年統計調查報告                    | Report on Annual Survey of Companies in Hong Kong<br>Representing Parent Companies Located outside<br>Hong Kong  | 2011                 | -  | -  |
| <b>科技</b>                                     | <b>Science and Technology</b>  |                      |  |  |
| 資訊科技在工商業的使用情況<br>和普及程度按年統計調查報告                | Report on Annual Survey on Information Technology Usage<br>and Penetration in the Business Sector  | 2009                 | 88.0                                       | 104.4                                      |
| 香港創新活動統計 (年刊)                                 | Hong Kong Innovation Activities Statistics (annual)  | 2010                 | -  | -  |
| 香港－資訊社會 (年刊)                                  | Hong Kong as an Information Society (annual)   | 2011                 | -  | -  |
| 香港－知識型經濟 統計透視 (雙年刊)                           | Hong Kong as a Knowledge-based Economy<br>- A Statistical Perspective (biennial)   | 2011                 | -  | -  |
| <b>運輸、通訊及旅遊</b>                               | <b>Transport, Communications and Tourism</b>   |                      |  |  |
| <b>船務統計</b>                                   | <b>Shipping Statistics</b>   |                      |  |  |
| 香港船務統計 (季刊)                                   | Hong Kong Shipping Statistics (quarterly)  | 7-9/2011             | -  | -  |
| <b>國民收入及國際收支平衡</b>                            | <b>National Income and Balance of Payments</b>   |                      |  |  |
| <b>國民收入</b>                                   | <b>National Income</b>   |                      |  |  |
| 本地生產總值 (季刊)                                   | Gross Domestic Product (quarterly)   | Q4/2011              | -  | -  |
| 本地生產總值 (年刊) <sup>(4)</sup>                    | Gross Domestic Product (annual) <sup>(4)</sup>   | 2011                 | 95.0                                       | 103.2                                      |
| 本地生產總值統計特刊，二零零七年十月<br>(特刊)                    | Special Report on Gross Domestic Product, October 2007<br>(ad hoc)   | -                    | 54.0                                       | 58.0                                       |
| <b>國際收支平衡</b>                                 | <b>Balance of Payments</b>   |                      |  |  |
| 香港國際收支平衡統計 (季刊)                               | Balance of Payments Statistics of Hong Kong (quarterly)  | Q3/2011              | -  | -  |
| 香港對外債務統計數字                                    | Hong Kong's External Debt Statistics   | Q3/2011              | -  | -  |
| 香港對外直接投資統計 (年刊)                               | External Direct Investment Statistics of Hong Kong<br>(annual)   | 2010                 | -  | -  |
| 香港國際收支平衡統計<br>一九九七年至一九九九年 (特刊)                | Balance of Payments Statistics of Hong Kong 1997 to 1999<br>(ad hoc)   | -                    | 14.0                                       | 18.0                                       |

政府統計處刊物一覽 (截至二零一二年三月一日) (續)

List of Publications of the Census and Statistics Department (as at 1.3.2012) (cont'd)

| 名稱                                       | Title   | 最新期號<br>Latest Issue | 印刷版售價(港元)<br>Price of Print Version (HK\$) |  |
|--|---|----------------------|--|--|
|  |   |                      | 不包括<br>郵費<br>Not<br>Including<br>Postage   | 連本地<br>郵費<br>Including<br>Local<br>Postage |
| <b>價格</b>                                |   |                      |  |  |
| <b>消費者價格</b>                             |   |                      |  |  |
| <b>Consumer Prices</b>                   |   |                      |  |  |
| 消費物價指數月報                                 | Monthly Report on the Consumer Price Index  | 1/2012               | -  | -  |
| 消費物價指數年報                                 | Annual Report on the Consumer Price Index   | 2011                 | -  | -  |
| <b>生產者價格</b>                             |   |                      |  |  |
| <b>Producer Prices</b>                   |   |                      |  |  |
| 特選建築材料平均批發價格 (月刊)                        | Average Wholesale Prices of Selected Building Materials<br>(monthly)                            | 11/2011              | -  | -  |
| 工業按季生產者價格指數                              | Quarterly Producer Price Index for Industrial Sector  | Q3/2011              | -  | -  |
| <b>住戶開支</b>                              |   |                      |  |  |
| <b>Household Expenditure</b>             |   |                      |  |  |
| 二零零九至一零年住戶開支統計調查及<br>重訂消費物價指數基期 (特刊)     | 2009/10 Household Expenditure Survey and the Rebasing of<br>the Consumer Price Indices (ad hoc) | -                    | 230.0                                      | 238.2                                      |
| <b>能源</b>                                |   |                      |  |  |
| <b>Energy</b>                            |   |                      |  |  |
| 香港能源統計 (季刊)                              | Hong Kong Energy Statistics (quarterly)   | Q3/2011              | -  | -  |
| 香港能源統計 (年刊)                              | Hong Kong Energy Statistics (annual)  | 2010                 | -  | -  |
| <b>統計分類表</b>                             |   |                      |  |  |
| <b>Classification Lists</b>              |   |                      |  |  |
| 香港進出口貨物分類表 (協調制度),<br>二零一二年版 (特刊)        | Hong Kong Imports and Exports Classification List<br>(Harmonized System), 2012 Edition (ad hoc) |                      |  |  |
| 第一冊: 第一至第十類貨物                            | Volume One: Commodity Section I – X   | -                    | 72.0                                       | 88.4                                       |
| 第二冊: 第十一至第二十二類貨物                         | Volume Two: Commodity Section XI – XXII   | -                    | 72.0                                       | 88.4                                       |
| 香港商品貿易統計分類表, 二零零七年版<br>(特刊)              | Hong Kong Merchandise Trade Statistics Classification,<br>2007 Edition (ad hoc)                 | -                    | 97.0                                       | 113.4                                      |
| 香港標準行業分類 2.0 版 (特刊)                      | Hong Kong Standard Industrial Classification (HSIC)<br>Version 2.0 (ad hoc)                     | -                    | 164.0                                      | 192.0                                      |
| <b>統計發展報告</b>                            |   |                      |  |  |
| <b>Report on Statistical Development</b> |   |                      |  |  |
| 統計發展概要 (年刊)                              | An Outline of Statistical Development (annual)  | 2011                 | 205.0                                      | 213.2                                      |

註釋： 所有政府統計處刊物均備有下載版，用戶可以在政府統計處網站(www.censtatd.gov.hk/products\_and\_services/products/publications/index\_tc.jsp) 免費下載統計刊物。部分刊物亦備有印刷版，可供購買。請參閱載於第 A16 頁獲取刊物的方法。

Notes: All publications of the Census and Statistics Department (C&SD) are available in download versions. Users may download publications free of charge from the website of C&SD (www.censtatd.gov.hk/products\_and\_services/products/publications/index.jsp). Some publications are also available in print versions and are offered for sale. Please refer to means of obtaining the publications in page A16.

除另有註明外，所有刊物均以中、英文對照形式出版。

Unless otherwise specified, all publications are published in bilingual format.

- (1) 由二零一二年期號起，此刊物已停止編製。
- (2) 本刊物的印刷版亦於部分郵局出售 (查詢熱線：(852) 2921 2222)。
- (3) 由二零一一年版起，此刊物已停止編製。
- (4) 分別備有中文版和英文版。

- (1) The publication was no longer produced as from the 2012 series.
- (2) Print version of the publication is also put for sale at selected Post Offices (enquiry hotline : (852) 2921 2222).
- (3) The publication was no longer produced as from the 2011 edition.
- (4) Available in separate Chinese and English versions.

所列售價及郵費日後或有修訂。外地郵費將於收到訂購要求後另行通知。

All quoted prices and postages are subject to revision. Postage for external mailings will be advised upon receipt of orders.

有關政府統計處刊物及其他統計產品的最新資料，請瀏覽本處網站內「產品及服務」一節(www.censtatd.gov.hk/products\_and\_services/index\_tc.jsp)或致電刊物出版組查詢(電話：(852) 2582 3025)。

For up-to-date information of the publications and other statistical products of C&SD, please visit the “Products & Services” section on the website of the department (www.censtatd.gov.hk/products\_and\_services/index.jsp) or call the Publications Unit of the department at (852) 2582 3025.

政府統計處唯讀光碟產品一覽 (截至二零一二年三月一日)  
List of CD-ROM Products of the Census and Statistics Department (as at 1.3.2012)

|  |  | 售價不包括<br>郵費(港元)<br>Price Not<br>Including<br>Postage (HK\$) | 售價連本地<br>郵費(港元)<br>Price<br>Including Local<br>Postage (HK\$) |
|--|--|---|---|
| <b>二零零一年人口普查</b>   |  |   |   |
| <b>2001 Population Census</b>  |  |   |   |
| - <b>統計表唯讀光碟 (不定期) ++</b><br>載有372個常用統計表。有關統計表涉及的主題廣泛，包括人口、住戶、教育、經濟、房屋、內部遷移及人口分組等本港住戶及人口特徵。選定統計表亦載列按區議會分區／選區及規劃統計小區／街段劃分的統計數字。   | - <b>TAB on CD-ROM (ad hoc) ++</b><br>Contains 372 commonly used statistical tables. The tables cover a wide range of topics including demographic, household, education, economic, housing, internal migration and home moving, and population sub-group characteristics of the households and population in Hong Kong. There are also geographical breakdown of the statistics by District Council District/Constituency Area and Tertiary Planning Unit/Street Block in selected tables.  | 1,690.0   | 1,711.2   |
| - <b>地圖唯讀光碟 (不定期)</b><br>以常用的格式提供一套數碼化的香港地圖，內載的地域分界數碼地圖包括香港海岸線、區議會分區／選區分界、規劃統計小區（及其合併組）分界、街段—小合併組分界及新市鎮分界。配合適當的電腦軟件，這套數碼地圖可把載於《二零零一年人口普查—統計表唯讀光碟》內的統計數據作地理顯示之用。  | - <b>MAP on CD-ROM (ad hoc)</b><br>Contains a set of digital maps of Hong Kong in commonly used formats. The digital maps for geographical delineation included therein are Coastline of Hong Kong, District Council District/Constituency Area Boundary, Tertiary Planning Unit (and Groupings) Boundary, Small Street Block Group Boundary and New Town Boundary. When used with suitable computer software, the digital maps can be used for geographical presentation of the statistical data contained in the <i>2001 Population Census - TAB on CD-ROM</i> .   | 840.0   | 857.0   |
| 關於購買以上兩套光碟事宜，請致電人口統計組（電話：(852) 2716 8025）。   |  |   |   |
| - <b>普查易2001 (不定期)</b><br>普查易2001人口普查光碟套裝是一套功能強大的知識為本產品，它能幫助使用者有效地進行客戶資訊分析和客戶關係管理的工作。普查易2001光碟內載有超過400個由政府統計處提供的香港二零零一年人口普查統計表、分區數碼地圖及功能超卓的地理訊息系統，當中包含了全香港居民的人口特徵、經濟、教育、住戶、房屋等統計數據，使用者可以透過簡單和容易使用的功能介面，來選擇和提取資料。 | - <b>Hong Kong CensusPro 2001 (ad hoc)</b><br>This CD-ROM product is a powerful knowledge-based product that enables users to perform customer profiling and Customer Relationship Management (CRM) easily and efficiently. CensusPro 2001 includes over 400 statistical tables of the Hong Kong 2001 Population Census provided by the Census and Statistics Department, digital boundary maps, and the superb Geographical Information System (GIS) functions and features. Statistical data on the demographic, economic, education, household and housing characteristics of the population are included and can be easily selected and retrieved through intuitive and easy-to-use application interface. |   |   |
| 普查易2001共有4種資料輸出模式：主題性地圖、預設格式報表、統計圖表、及檔案匯出（支援數據庫試算表/純文字等格式）。普查易2001光碟可應用於規劃業務策略、直接市場推廣或宣傳、客戶資料分析、以及作其他的商業性分析等。  | CensusPro 2001 provides output in mainly 4 ways : thematic maps, formatted reports, bar/pie charts, and export files in dbf/Excel files/text files. CensusPro 2001 can be used in areas like strategic business/service planning, direct marketing and promotion, customer analysis and profiling, and many other business analysis purposes and applications.   |   |   |
| - <b>SUPERMAP Hong Kong 2001 (不定期)</b><br>• 涵蓋全面的人口普查數據，配合最新數碼地圖作介面<br>• 採用具世界領導地位之地理信息系統進行處理及分析<br>• 可作多重圖像化分析人口普查數據<br>• 有助機構進行深入的市場及客戶資訊分析  | - <b>SUPERMAP Hong Kong 2001 (ad hoc)</b><br>• Covers comprehensive population census datasets with the use of the latest digital maps as interface<br>• Manipulates and analyses through employing world leading GIS technology<br>• Provides multiple views of population census data<br>• Helps organisations with in-depth market analysis or customer profiling through data linkage  |   |   |
|  | 這些光碟產品由益百利香港有限公司生產及銷售。有關查詢及訂購，請直接與該公司聯絡（電話：(852) 2839 5388）。<br>These CD-ROMs are produced and marketed by Experian Hong Kong Limited. For enquiries and purchase, please contact the company direct at (852) 2839 5388.   |   |   |

政府統計處唯讀光碟產品一覽 (截至二零一二年三月一日) (續)

List of CD-ROM Products of the Census and Statistics Department (as at 1.3.2012) (cont'd)

|   |   | 售價不包括<br>郵費(港元)<br>Price Not<br>Including<br>Postage (HK\$) | 售價連本地<br>郵費(港元)<br>Price<br>Including Local<br>Postage (HK\$)  |
|---|---|---|--|
| <b>對外商品貿易</b>   | <b>External Merchandise Trade</b>   |   |  |
| - <b>香港對外商品貿易唯讀光碟</b><br>列載過去24個月的按月貿易統計數字及過往八年的按年貿易統計數字(按年數字只載於周年版), 並包括按貨品類別(「標準國際貿易分類」或「協調制度」、國家/地區及運輸方式劃分的詳細貿易統計數字。 | - <b>Hong Kong External Merchandise Trade CD-ROM</b><br>Contains monthly trade data for past 24 months and annual trade data for past eight years (annual figures are only available in the annual edition). Detailed statistics classified by commodity (using the Standard International Trade Classification or the Harmonized System), by country/territory and by mode of transport are also included. |   | ) 這些光碟產品由益百利香港有限公司生產及銷售。有關查詢及訂購, 請直接與該公司聯絡(電話: (852) 2839 5388)。<br>) These CD-ROMs are produced and marketed by Experian Hong Kong Limited. For enquiries and purchase, please contact the company direct at (852) 2839 5388. |
| - <b>香港船務統計唯讀光碟 (按季產品)</b><br>列載自一九九三年以來, 按運輸方式、裝運種類、裝貨/卸貨國家/地區及港口、貨品、貨物種類、貨物裝卸地點及與中國內地有關的轉運劃分的貨物及載貨貨櫃吞吐量統計數字。          | - <b>Hong Kong Shipping Statistics CD-ROM (quarterly)</b><br>Contains data back-dated to 1993 on cargo and laden container throughput statistics analysed by mode of transport, shipment type, country/territory and port of loading/discharge, commodity, cargo type, cargo handling location and transshipment related to the mainland of China.  |   | )  |

註釋: ++ 分別備有中文版和英文版。

所列售價及郵費日後或有修訂。外地郵費將於收到訂購要求後另行通知。

有關政府統計處刊物及其他統計產品的最新資料, 請瀏覽本處網站內「產品及服務」一節 ([www.censtatd.gov.hk/products\\_and\\_services/index\\_tc.jsp](http://www.censtatd.gov.hk/products_and_services/index_tc.jsp))或致電刊物出版組查詢(電話: (852) 2582 3025)。

Notes: ++ Available in separate Chinese and English versions.

All quoted prices and postages are subject to revision. Postage for external mailings will be advised upon receipt of orders.

For up-to-date information of the publications and other statistical products of the Census and Statistics Department, please visit the "Products & Services" section on the website of the department ([www.censtatd.gov.hk/products\\_and\\_services/index.jsp](http://www.censtatd.gov.hk/products_and_services/index.jsp)) or call the Publications Unit of the department at (852) 2582 3025.

**獲取政府統計處刊物及其他統計產品的方法**  
Means of Obtaining Publications and Other Statistical Products  
of the Census and Statistics Department

**網站**

用戶可以在政府統計處網站 ([www.censtatd.gov.hk/products\\_and\\_services/products/publications/index\\_tc.jsp](http://www.censtatd.gov.hk/products_and_services/products/publications/index_tc.jsp)) 免費下載統計刊物。

**郵購服務**

政府統計處部分刊物備有印刷版，於政府新聞處的政府書店網站 ([www.bookstore.gov.hk](http://www.bookstore.gov.hk)) 有售。市民亦可在政府統計處網站 ([www.censtatd.gov.hk/products\\_and\\_services/other\\_services/provision\\_of\\_stat/mail\\_ordering\\_of\\_publications/index\\_tc.jsp](http://www.censtatd.gov.hk/products_and_services/other_services/provision_of_stat/mail_ordering_of_publications/index_tc.jsp)) 下載郵購表格，並將填妥的郵購表格，連同所需費用的支票或匯票寄回辦理。

**銷售中心**

市民可親臨政府統計處刊物出版組購買刊物的印刷版和唯讀光碟產品，並即時提取。刊物出版組的地址是：

香港灣仔港灣道十二號  
灣仔政府大樓十九樓

電話：(852) 2582 3025  
圖文傳真：(852) 2827 1708

該組並設有閱讀區，陳列政府統計處各類刊物的最新期號，供讀者查閱。閱讀區也備有統計處編製的宣傳／教育單張和小冊子，歡迎索閱。

**Website**

Users may download statistical publications free of charge from the website of the Census and Statistics Department ([www.censtatd.gov.hk/products\\_and\\_services/products/publications/index.jsp](http://www.censtatd.gov.hk/products_and_services/products/publications/index.jsp)).

**Mail Order Service**

Some publications of the Census and Statistics Department are available in print versions and are offered for sale online at the Government Bookstore of the Information Services Department ([www.bookstore.gov.hk](http://www.bookstore.gov.hk)). A mail order form for ordering print versions of publications is also available for downloading on the website of the Department ([www.censtatd.gov.hk/products\\_and\\_services/other\\_services/provision\\_of\\_stat/mail\\_ordering\\_of\\_publications/index.jsp](http://www.censtatd.gov.hk/products_and_services/other_services/provision_of_stat/mail_ordering_of_publications/index.jsp)). Completed form should be sent back together with a cheque or bank draft covering all necessary cost.

**Sales Centre**

Print versions of publications and CD-ROM products are available for purchase and collection on the spot at the Publications Unit of the Census and Statistics Department at the following address :

19/F Wanchai Tower  
12 Harbour Road, Wan Chai, Hong Kong.

Tel. : (852) 2582 3025  
Fax : (852) 2827 1708

The Unit also provides a reading area where users may browse through the latest issue of various publications of the Department on display. Publicity/educational leaflets and pamphlets of the Department are also available for collection.

# 郵購表格 (只適用於印刷版)

## Mail Order Form (Applicable to print versions only)

致： 香港中環花園道  
美利大廈 4樓 402室  
政府新聞處  
刊物銷售小組  
電話： (852) 2537 1910  
圖文傳真： (852) 2523 7195

To : Publications Sales Unit  
Information Services Department  
Room 402, 4/F, Murray Building,  
Garden Road, Central, Hong Kong  
Tel. : (852) 2537 1910  
Fax : (852) 2523 7195

| 書名<br>Title  | 刊期<br>(年份/季/<br>月份或期號)<br>Issue<br>(Year/Quarter/<br>Month or Issue no.) | 數量<br>Quantity | 每本售價<br>(港元)<br>Price per copy<br>(HK\$) | 本地郵費 <sup>(1)(2)</sup><br>(港元)<br>Local <sup>(1)(2)</sup><br>postage (HK\$) | 金額(港元)<br>Amount(HK\$) |
|--|--|----------------|--|---|------------------------|
| 香港統計年刊<br>Hong Kong Annual Digest of Statistics<br>(J47011100B0) | 二零一一年版<br>2011 edition   |                | 346.0                                    | 28.0  |                        |
| 統計發展概要<br>An Outline of Statistical Development<br>(J33111100B0) | 二零一一年版<br>2011 edition   |                | 205.0                                    | 8.2   |                        |
|  |  |                |  |   |                        |
|  |  |                |  |   |                        |
|  |  |                |  |   |                        |
|  |  |                |  |   |                        |

本人欲訂購上述刊物。現附上劃線支票（抬頭人「香港特別行政區政府」）編號 \_\_\_\_\_  
港幣 \_\_\_\_\_ 元正。

I wish to order the above publications and enclose a crossed cheque no. \_\_\_\_\_ for HK\$ \_\_\_\_\_  
made payable to "The Government of the Hong Kong Special Administrative Region".

|             |  |
|-------------|--|
| 姓名 Name     |  |
| 地址 Address  |  |
| 電話 Tel. No. |  |
| 日期 Date     |  |

註： (1) 外地的訂戶暫時無須付上支票，所需郵費將於收到訂購表格後另行通知。

Notes: For mailings to addresses outside Hong Kong, please do not send in a cheque now. The required postage will be advised upon receipt of order.

(2) 訂購超過一本相同名稱的年刊或特刊，請向政府新聞處查詢所需的本地郵費（電話：(852) 2842 8844 或 (852) 2842 8845，圖文傳真：(852) 2598 7482）。

For an order of multiple copies of publication with the same title, please consult the Information Services Department about the required local postage. (Tel. : (852) 2842 8844 or (852) 2842 8845, Fax : (852) 2598 7482).

你在表格上所提供的資料，只會用作辦理書刊訂購事宜，不會公開予任何和訂購無關的人士。如你欲查看或更改所填報的資料，請與政府新聞處處長聯絡。

The information provided will be used for processing your order of publications and will not be disclosed to parties outside the Government. You may seek access to or correction of the information by addressing your request to the Director of Information Services.

# 二〇一一年本地生產總值 2011 Gross Domestic Product



本地生產總值是量度香港經濟表現的重要指標

*GDP is an important indicator of the performance of the Hong Kong economy*

本年刊（分別備有中英文版）載錄香港本地生產總值的最新數字：

- 一九六一年至二零一一年及二零零一年第一季至二零一一年第四季按開支組成部分劃分的本地生產總值數據系列
- 二零零零年至二零一零年及二零零一年第一季至二零一一年第三季按經濟活動劃分的本地生產總值數據系列
- 編製本地生產總值數據的方法及資料來源

二零零一年至二零一零年及二零零八年第一季至二零一一年第三季本地居民生產總值的數字亦載錄在本刊物內

**This annual publication (available in English and Chinese versions separately) contains the latest figures of the Gross Domestic Product (GDP) of Hong Kong:**

- Data series of GDP by expenditure component from 1961 to 2011 and the first quarter of 2001 to the fourth quarter of 2011
- Data series of GDP by economic activity from 2000 to 2010 and the first quarter of 2001 to the third quarter of 2011
- Methods and data sources for compiling the GDP figures

**Gross National Product (GNP) for 2001 to 2010 and the first quarter of 2008 to the third quarter of 2011 are also included in this publication**

有關獲取本刊物的方法，請參閱第A16頁。此外，刊物的訂閱表格亦刊載於下頁。

*Please refer to page A16 for the means of obtaining this publication. A subscription form is also available on the following page for ordering the publication.*



郵購表格 (只適用於印刷版)  
二〇一一年本地生產總值

Mail Order Form (Applicable to print versions only)  
2011 Gross Domestic Product

致：香港灣仔港灣道十二號灣仔政府大樓二十二樓  
政府統計處 國民收入統計科  
(電話：(852) 2582 5077  
圖文傳真：(852) 2157 9295)

To : National Income Branch  
Census and Statistics Department  
22/F Wanchai Tower,  
12 Harbour Road, Wan Chai, Hong Kong  
(Tel. : (852) 2582 5077, Fax : (852) 2157 9295)

請在適當空格 (□) 內加上 (√) 號。Please tick (√) the appropriate box (□). (港元 HK\$)

|   | 每本售價<br>Price per copy | 每本本地郵費(1)(2)<br>Local postage(1)(2) | 每本合計<br>Total price<br>(a) | 本數<br>Number of copies<br>(b) | 總計<br>Total amount<br>(a) x (b) |
|---|------------------------|-------------------------------------|----------------------------|-------------------------------|---------------------------------|
| <input type="checkbox"/> 中文版 Chinese version<br>(J35731100C0) | 95.0                   | 8.2                                 | 103.2                      |                               |                                 |
| <input type="checkbox"/> 英文版 English version<br>(J35731100E0) | 95.0                   | 8.2                                 | 103.2                      |                               |                                 |
| 合計 Total  |                        |                                     |                            |                               |                                 |

本人現付上支票 (編號：\_\_\_\_\_ ) 港幣 \_\_\_\_\_ 元，購買上述刊物。(註：支票應予劃線，並註明支付「香港特別行政區政府」。)

I enclose a cheque (No. \_\_\_\_\_) of HK\$ \_\_\_\_\_ for the payment of the above order. (Note : Cheque should be crossed and made payable to "The Government of the Hong Kong Special Administrative Region" or "The Government of the HKSAR".)

客戶資料 Customer's Information

姓名 Name : \_\_\_\_\_ 機構名稱 Name of organisation : \_\_\_\_\_  
職銜 Title of post : \_\_\_\_\_ 地址 Address : \_\_\_\_\_  
部門 Department : \_\_\_\_\_  
電話 Tel. : \_\_\_\_\_  
圖文傳真 Fax : \_\_\_\_\_  
日期 Date : \_\_\_\_\_

機構主要業務類別 Major line of business of organisation :

- 進口與出口貿易業 Import and export trade     建造業 Construction  
 零售貿易業 Retail trade     金融、保險及地產業 Financing, insurance and real estate  
 製造業 Manufacturing     商用服務業 Business services  
 教育機構 Educational institution     社區、社會及個人服務業 Community, social and personal services  
 其他 Others (請註明 Please specify) : \_\_\_\_\_

讀者類別 Readership (可選多項 more than one choice allowed) :

- 經理 Manager     市場、推廣部人員 Marketing / promotional personnel  
 分析員、研究員 Analyst / researcher     教師、大專院校講師 Teaching staff / lecturer  
 學生 Student     其他 Others (請註明 Please specify) : \_\_\_\_\_

客戶類別 Type of customer :

- 機構 Organisation     私人 Individual

你是否願意收到本處其他刊物的推廣資料? Do you want to receive promotional materials of other publications of this department?

- 是 Yes     否 No

註：(1) 外地的訂戶暫時無須付上支票，所需郵費將於收到訂購表格後另行通知。

Notes : For mailings to addresses outside Hong Kong, please do not send in a cheque now. The required postage will be advised upon receipt of order.

- (2) 訂購超過一本年刊，請向政府新聞處查詢所需的本地郵費 (電話：(852) 2842 8844 或(852) 2842 8845，圖文傳真：(852) 2598 7482)。  
For an order of multiple copies of the publication, please consult the Information Services Department about the required local postage.  
(Tel. : (852) 2842 8844 or (852) 2842 8845, Fax : (852) 2598 7482).

你在表格上所提供的資料，只會用作辦理書刊訂購事宜，不會向任何和訂購無關的人士透露。如欲查看或更改所填報的資料，請與政府統計處的資料管理人員聯絡。地址：香港灣仔港灣道十二號灣仔政府大樓二十一樓。

The information provided herein will only be used for processing your order of publications and will not be disclosed to parties which are not involved in the processing. You may seek access to or correction of the information by addressing your request to the Data Controlling Officer, Census and Statistics Department, 21/F Wanchai Tower, 12 Harbour Road, Wan Chai, Hong Kong.

# 香港二零一一年人口普查簡要報告

## *Hong Kong 2011 Population Census*

### *Summary Results*



本刊物載有 45 個統計表、13 幅統計圖及短評，概述二零一一年人口普查的簡要結果

This publication contains 45 tables, 13 charts and commentaries summarizing findings of the 2011 Population Census

本刊物為下列人士的必備參考：—

An essential reference for :-

- 商界人士
- 社會研究人員
- 經濟分析員
- 市場研究員
- 新聞工作者
- 其他專業人士

- business persons
- social researchers
- economic analysts
- marketing researchers
- journalists
- professionals in other disciplines

有關獲取本刊物的方法，請參閱第 A16 頁。此外，刊物的訂閱表格亦刊載於下頁。

*Please refer to page A16 for the means of obtaining this publication. A subscription form is also available on the following page for ordering the publication.*

# 郵購表格 (只適用於印刷版)

## 香港二零一一年人口普查刊物

| 致：香港花園道<br>美利大廈四樓<br>政府新聞處<br>刊物銷售小組<br>電話：(852) 2842 8844 或<br>(852) 2842 8845<br>圖文傳真：(852) 2598 7482 | 售價         |                               |                   | 合計<br>所需<br>數量<br>(b) | 總計<br>(港元)<br>(a) x (b) |
|---|------------|-------------------------------|-------------------|-----------------------|-------------------------|
|   | 每本<br>(港元) | 本地<br>郵費<br>(1) 及 (2)<br>(港元) | 合計<br>(港元)<br>(a) |                       |                         |
| 1. 簡要報告<br>(J33590100B0)  | 238.0      | 16.4                          | 254.4             |                       |                         |
| 2.  |            |                               |                   |                       |                         |
| 3.  |            |                               |                   |                       |                         |
| 4.  |            |                               |                   |                       |                         |
| 5.  |            |                               |                   |                       |                         |
| 6.  |            |                               |                   |                       |                         |

本人現付上支票 (編號：\_\_\_\_\_ ) 港幣 \_\_\_\_\_ 元，購買上述刊物。  
(註：支票應予劃線，並註明支付「香港特別行政區政府」。)

姓名：\_\_\_\_\_ 職銜：\_\_\_\_\_

機構名稱：\_\_\_\_\_ 地址：\_\_\_\_\_

電話：\_\_\_\_\_ 圖文傳真：\_\_\_\_\_

日期：\_\_\_\_\_ (日/月/年) \_\_\_\_\_

- 註：(1) 外地的訂戶暫時無須付上支票，所需郵費將於收到訂購表格後另行通知。  
(2) 訂購超過一本相同名稱的刊物，請向政府新聞處查詢所需的本地郵費 (電話：(852) 2842 8844 或 (852) 2842 8845，圖文傳真：(852) 2598 7482)。  
(3) 有關該刊物的售價及/或郵費，請向政府統計處二零一一年人口普查辦事處查詢 (電話：(852) 2716 8025，圖文傳真：(852) 2716 0231)。

你在表格上提供的資料，只會用作辦理書刊訂購事宜，不會向任何和訂購無關的人士透露。如欲查看或更改所填報的資料，請與政府新聞處刊物銷售小組聯絡。地址：香港花園道美利大廈四樓。



# Mail Order Form (Applicable to print version only)

## Publications of the Hong Kong 2011 Population Census

| To : Publications Sales Unit<br>Information Services Department<br>4/F Murray Building<br>Garden Road<br>Hong Kong<br>Tel.: (852) 2842 8844 or<br>(852) 2842 8845<br>Fax : (852) 2598 7482 | Price                 |   |                            | Total<br>no. of<br>issue(s)<br>required<br><br>(b) | Total<br>amount<br>(HK\$)<br><br>(a) x (b) |
|--|-----------------------|---|----------------------------|--|--|
|  | Per<br>copy<br>(HK\$) | Local<br>postage<br>(1) & (2)<br>(HK\$) | Total<br>(HK\$)<br><br>(a) |  |  |
| 1. Summary Results<br>( J33590100B0)   | 238.0                 | 16.4                                    | 254.4                      |  |  |
| 2.   |                       |   |                            |  |  |
| 3.   |                       |   |                            |  |  |
| 4.   |                       |   |                            |  |  |
| 5.   |                       |   |                            |  |  |
| 6.   |                       |   |                            |  |  |

I enclose a cheque No. ( \_\_\_\_\_ ) of HK\$ \_\_\_\_\_ for the payment of the above order. (Note : The cheque should be crossed and made payable to “The Government of the Hong Kong Special Administrative Region” or “The Government of the HKSAR”.)

Name: \_\_\_\_\_ Title of post: \_\_\_\_\_

Name of organisation: \_\_\_\_\_ Address: \_\_\_\_\_

Tel.: \_\_\_\_\_ Fax: \_\_\_\_\_

Date: \_\_\_\_\_ (DD/MM/YYYY) \_\_\_\_\_

- Notes: (1) For mailings to addresses outside Hong Kong, please do not send in a cheque now. The required postage will be advised upon receipt of order.
- (2) For an order of multiple copies of the publication with the same title, please consult the Information Services Department about the required local postage. (Tel.: (852) 2842 8844 or (852) 2842 8845, Fax: (852) 2598 7482).
- (3) For price and/or postage of this publication, please consult the 2011 Population Census Office of the Census and Statistics Department (Tel.: (852) 2716 8025, Fax: (852) 2716 0231).

The information provided herein will only be used for processing your order of publications and will not be disclosed to parties which are not involved in the processing. You may seek access to or correction of the information by addressing your request to the Publications Sales Unit, Information Services Department, 4/F Murray Building, Garden Road, Hong Kong.

