

## **The Recent Unemployment and Underemployment Situation in Hong Kong**

### **近期香港的失業和就業不足情況**

The unemployment rate has risen from a record low of 1.1% in 1989 to around 2% in the early 90s and continued to climb to some 3.5% in mid-1995. It was at about 3.0% in early 1996. This article aims to analyse in greater depth the latest unemployed and underemployed population of Hong Kong.

失業率在一九八九年只有 1.1%，這是有紀錄以來的最低數字。九〇年代初期，失業率回升至 2% 左右，九五年年中更上升至約 3.5%。在九六年年初，失業率約在 3.0% 的水平。本文旨在深入分析近期香港失業和就業不足人口的情況。

# The Recent Unemployment and Underemployment Situation in Hong Kong

## 近期香港的失業和就業不足情況

### 1. Introduction

1.1 The Census and Statistics Department has been conducting the General Household Survey (GHS) on a continuous basis since August 1981 to collect information on the labour force situation of Hong Kong.

1.2 The GHS is a sample survey whose main objective is to collect data on the labour force, unemployment and underemployment. Some information on the demographic and social characteristics of the population is also obtained.

1.3 The survey covers the land-based civilian non-institutional population. It does not cover hotel transients and inmates of institutions; military personnel and their dependents; and persons living on board vessels.

1.4 The quarterly sample size of the GHS was increased from some 13 500 to 20 000 living quarters as from August 1995 and further increased to about 27 000 living quarters as from April 1996. Consequently, more detailed analyses of the socio-economic characteristics of the labour force can be made.

1.5 A rotational sampling design is adopted such that about half of the sample in a month will be enumerated again three months later.

### 2. Concepts and Definitions

2.1 The definitions used in the GHS for measuring labour force, unemployment and underemployment follow closely those recommended by the International Labour Organization. Some key concepts and definitions adopted are described below.

2.2 The population can be divided into two sub-groups according to their economic activity status, viz. the economically active population and the economically inactive population.

2.3 The economically active population, synonymous with the labour force, comprises the employed population and the unemployed population.

### 1. 引言

1.1 政府統計處自一九八一年八月開始持續進行綜合住戶統計調查，以搜集有關香港勞動人口狀況的資料。

1.2 綜合住戶統計調查是一項抽樣統計調查，旨在搜集有關勞動人口、失業和就業不足的資料。一些有關人口和社會特徵的資料，亦可從而獲得。

1.3 這項統計調查涵蓋陸上非住院平民人口，不包括入住酒店的過境旅客和公共機構／社團院舍的住院人士、軍人及其家眷、以及水上居民。

1.4 自一九九五年八月起，綜合住戶統計調查每季的樣本規模已經由 13 500 個屋宇單位增至 20 000 個。由今年四月起，樣本規模更增至 27 000 個屋宇單位，因而有關勞動人口的社會和經濟特徵的資料，可作更詳細的分析。

1.5 這項統計調查採用循環式樣本設計，按照這抽樣方式，某一月份被抽中的樣本單位，有半數在三個月後再成統計對象。

### 2. 概念和定義

2.1 綜合住戶統計調查中，計算勞動人口、失業和就業不足數字所採用的定義，基本上遵照國際勞工組織的建議，現將部分主要概念和定義略述如下。

2.2 根據每位人士的經濟活動身分，人口可劃分為從事經濟活動人口及非從事經濟活動人口。

2.3 從事經濟活動人口，即勞動人口，可再分為就業人口及失業人口。

2.4 On the other hand, the economically inactive population is made up of those persons who have not had a job and have not been at work during the seven days before enumeration, excluding persons who have been on leave/holiday during the seven-day period and persons who are unemployed. It comprises mainly the home-makers, retired persons and all those below the age of 15.

2.5 The labour force refers to the land-based civilian non-institutional population aged 15 or over who satisfy the criteria for inclusion in the employed population or the unemployed population.

2.6 **Employed population** - This comprises all employed persons. For a person aged 15 or over to be classified as employed, that person should:

- (a) be engaged in performing work for pay or profit during the seven days before enumeration; *or*
- (b) have formal job attachment (i.e. that the person has continued receipt of wage or salary; *or* has an assurance or an agreed date of return to job or business; *or* is in receipt of compensation without obligation to accept another job).

2.7 **Unemployed population** - This comprises all unemployed persons. For a person aged 15 or over to be classified as unemployed, that person should:

- (a) not have had a job and should not have performed any work for pay or profit during the seven days before enumeration; *and*
- (b) have been available for work during the seven days before enumeration; *and*
- (c) have sought work during the thirty days before enumeration.

2.8 Notwithstanding the above, the following types of persons are considered as unemployed:

- (a) persons without a job, have sought work but have not been available for work because of temporary sickness; *and*
- (b) persons without a job, have been available for work but have not sought work because they:
  - i) have made arrangements to take up a new job or to start business at a subsequent date; *or*

2.4 另一方面，非從事經濟活動人口包括所有在統計前七天內並無職位亦無工作的人，在這七天內正休假的人士及失業人士除外。非從事經濟活動人口主要包括料理家務者、退休人士及十五歲以下的人士。

2.5 **勞動人口**是指十五歲或以上陸上非住院平民人口，並符合就業人口或失業人口定義的人士。

2.6 **就業人口**：由所有就業人士構成。一名十五歲或以上人士如符合下列情況，可界定為就業人士：

- (a) 統計前七天內從事一些工作賺取薪酬或利潤；*或*
- (b) 有一份正式工作(即該人士持續支取工資或薪金；*或*已獲保證或已有既定日期返回工作崗位或所經營之業務；*或*正支取補償費而無須接受其他工作)。

2.7 **失業人口**：由所有失業人士構成。一名十五歲或以上人士如符合下列情況，便界定為失業人士：

- (a) 在統計前七天內並無職位，且並無為賺取薪酬或利潤而工作；*及*
- (b) 在統計前七天內隨時可工作；*及*
- (c) 在統計前三十天內有找尋工作。

2.8 除上述情況外，下列人士亦視作失業人士：

- (a) 並無職位，有找尋工作，但由於暫時生病而不能工作的人士；*及*
- (b) 並無職位，且隨時可工作，但由於下列原因並無找尋工作的人士：
  - i) 已為於稍後時間擔當的新工作或開展的業務作出安排；*或*

- ii) were expecting to return to their original jobs (e.g. casual workers are usually called back to work when service is needed); *or*
- iii) believed that work was not available to them.

2.9 **Underemployed population** - In the GHS, employed persons are classified as underemployed if they involuntarily worked less than 35 hours during the seven days before enumeration *and* either:

- (a) have been available for additional work during the seven days before enumeration; *or*
- (b) have sought additional work during the thirty days before enumeration.

Working short hours is considered as involuntary if it is due to economic reasons such as slack work, material shortage, mechanical breakdown and inability to find a full-time job.

2.10 **Unemployment rate** - This refers to the proportion of unemployed persons in the labour force. It is computed as the number of unemployed persons divided by the size of the *labour force* and multiplied by 100%. As regards unemployment rates by industry, since in deriving both the numerator and the denominator, (i) unemployed persons are classified according to their *previous* industry which may not necessarily be the one which he/she will enter, and (ii) there is no information on previous industry in respect of first-time job-seekers and re-entrants into the labour force, such rates are thus not strictly comparable to the overall unemployment rate and should be interpreted with caution.

2.11 **Underemployment rate** - This refers to the proportion of underemployed persons in the labour force. It is computed as the number of underemployed persons divided by the size of the *labour force* and multiplied by 100%. As regards underemployment rates by industry, since in deriving the labour force by industry to serve as the denominator, (i) unemployed persons are classified according to their *previous* industry which may not necessarily be the one which he/she will enter, and (ii) there is no information on previous industry in respect of first-time job-seekers and re-entrants into the labour force, such rates are thus not strictly comparable to the overall underemployment rate and should be interpreted with caution.

- ii) 正期待返回原來的工作崗位(例如散工在有需要時通常會獲通知開工); *或*
- iii) 相信沒有工作可做。

2.9 **就業不足人口**：就綜合住戶統計調查而言，就業人士如在統計前七天內在非自願情況下工作少於三十五小時，及符合下列其中一種情況，便界定為就業不足人士：

- (a) 在統計前七天內可擔任更多工作；*或*
- (b) 在統計前三十天內有找尋更多工作。

因經濟原因，如工作量不足、原料短缺、機械故障或不能找到全職工作，以致只能工作短時數的人士，可視作非自願情況下將工作時數縮短。

2.10 **失業率**：指失業人士在勞動人口中所佔的比例。計算方法是將失業人數除以**勞動人口**數目，再乘以 100%。有關按行業劃分的失業率，由於在計算分子和分母時，(i) 失業人士是按其**以前**從事的行業劃分，因而未必能確實反映他們將從事工作的行業，而且 (ii) 亦沒有首次求職人士和重新加入勞動人口的失業人士所屬行業的資料，因此，按行業劃分的失業率，不能與整體的失業率作嚴謹比較，同時亦須謹慎闡釋。

2.11 **就業不足率**：指就業不足人士在勞動人口中所佔的比例。計算方法是將就業不足人數除以**勞動人口**數目，再乘以 100%。有關按行業劃分的就業不足率，由於在計算用作分母的按行業劃分的勞動人口時，(i) 失業人士是按其**以前**從事的行業劃分，因而未必能確實反映他們將從事工作的行業，而且 (ii) 亦沒有首次求職人士和重新加入勞動人口的失業人士所屬行業的資料，因此，按行業劃分的就業不足率，不能與整體的就業不足率作嚴謹比較，同時亦須謹慎闡釋。

### 3. Changes in unemployment rates

3.1 In the past decade, the unemployment rate was exceptionally low in the late 80s. It dropped from 1.7% in 1987 to 1.1% in 1989 before rising slightly to 1.3% in 1990. After that, the rate fluctuated within a narrow range between 1.8% and 2.0% until 1995 when it began to climb to over 3.0%. In the first quarter of 1996 (Q1 1996), the unemployment rate was 3.0%. After adjusting for seasonal variations in the proportion of first-time job-seekers in the labour force, the rate was 3.2%. (Table 1 and Chart 1)

3.2 The unemployment rates for males and females followed a similar trend. While there was no significant difference between the unemployment rates of the two sexes during 1987 to 1993, the gap began to widen in 1994 and the unemployment rate for males was 1.1 percentage point higher than that for females in Q1 1996. (Table 1 and Chart 1)

### 3. 失業率的變動

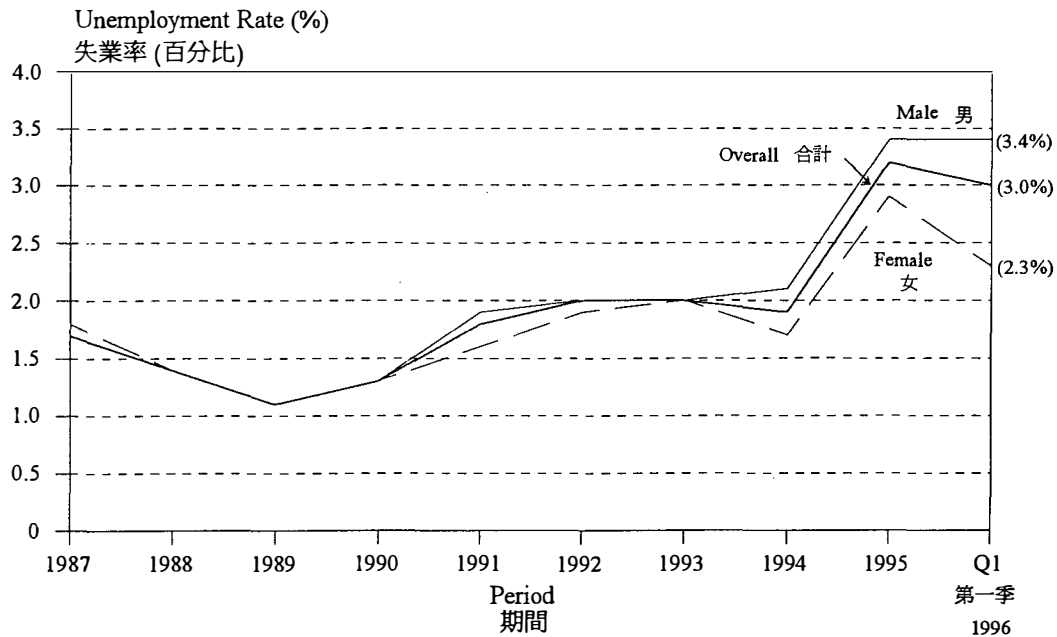
3.1 過去十年間，失業率在八〇年代後期處於極低的水平。它從一九八七年的 1.7% 跌至一九八九年的 1.1%，隨後輕微回升至一九九〇年的 1.3%。其後，失業率的變動幅度不大，介乎 1.8% 與 2.0% 之間。直至一九九五年，失業率攀升至 3.0% 以上。一九九六年第一季的失業率為 3.0%。按首次求職人士佔勞動人口比例的季節性差異作出調整的失業率為 3.2%。(表一和圖一)

3.2 男性及女性失業率的趨勢大致相同，雖然在一九八七至一九九三年期間，兩性間的失業率無顯著差距，但在一九九四年，差距開始增大。一九九六年第一季的男性失業率較女性失業率高出 1.1 個百分點。(表一和圖一)

**Table 1 Unemployment by sex — number and rate**  
**表一 按性別劃分的失業統計 — 人數及比率**

Period 期間	Male 男		Female 女		Overall 合計	
	Number 人數	Rate 比率	Number 人數	Rate 比率	Number 人數	Rate 比率
	('000)	(%)	('000)	(%)	('000)	(%)
1987	29.7	1.7	17.6	1.8	47.4	1.7
1988	24.0	1.4	13.7	1.4	37.7	1.4
1989	19.1	1.1	10.6	1.1	29.7	1.1
1990	23.3	1.3	13.3	1.3	36.6	1.3
1991	33.7	1.9	16.6	1.6	50.3	1.8
1992	35.3	2.0	19.4	1.9	54.6	2.0
1993	36.2	2.0	20.7	2.0	56.9	2.0
1994	38.5	2.1	18.7	1.7	57.2	1.9
1995	64.1	3.4	33.5	2.9	97.7	3.2
Jan - Mar 1996 1996年1至3月	66.9	3.4	27.2	2.3	94.1	3.0

**Chart 1 Unemployment rate by sex**  
**圖一 按性別劃分的失業率**



3.3 Analysed by age, the unemployment rate for the 15-19 age group remained at a much higher level than those for other age groups throughout the period (Table 2). This situation is quite similar to that in other countries such as the U.K., U.S.A. and Australia.

3.3 按年齡分析，十五至十九歲年齡組別的失業率，遠高於其他年齡組別的失業率（表二）。這情況與其他地方（例如英國、美國及澳洲等地）相似。

**Table 2 Unemployment by age group — number and rate**  
**表二 按年齡組別劃分的失業統計 — 人數及比率**

Age group 年齡組別	Period 期間									Thousand 千人
	1987	1988	1989	1990	1991	1992	1993	1994	1995	1996 First Quarter 第一季
15 - 19	<b>8.8</b> (6.6%)	<b>7.5</b> (5.7%)	<b>5.5</b> (4.4%)	<b>7.4</b> (6.2%)	<b>9.2</b> (8.1%)	<b>6.8</b> (6.6%)	<b>7.7</b> (8.1%)	<b>7.2</b> (8.5%)	<b>10.2</b> (12.7%)	<b>10.4</b> (11.8%)
20 - 29	<b>20.2</b> (2.1%)	<b>17.5</b> (1.9%)	<b>14.5</b> (1.6%)	<b>15.8</b> (1.8%)	<b>19.3</b> (2.3%)	<b>22.3</b> (2.7%)	<b>22.7</b> (2.7%)	<b>21.3</b> (2.5%)	<b>33.5</b> (4.0%)	<b>30.7</b> (3.7%)
30 - 39	<b>8.1</b> (1.1%)	<b>6.1</b> (0.8%)	<b>4.4</b> (0.6%)	<b>5.9</b> (0.7%)	<b>9.5</b> (1.1%)	<b>12.0</b> (1.4%)	<b>11.9</b> (1.3%)	<b>13.1</b> (1.3%)	<b>23.4</b> (2.3%)	<b>23.0</b> (2.2%)
40 - 49	<b>4.1</b> (1.0%)	<b>3.1</b> (0.7%)	<b>2.4</b> (0.5%)	<b>3.9</b> (0.8%)	<b>6.7</b> (1.3%)	<b>7.4</b> (1.3%)	<b>7.3</b> (1.3%)	<b>9.0</b> (1.4%)	<b>18.5</b> (2.7%)	<b>18.1</b> (2.5%)
50 - 59	<b>4.6</b> (1.4%)	<b>2.7</b> (0.8%)	<b>2.2</b> (0.7%)	<b>2.9</b> (1.0%)	<b>4.5</b> (1.5%)	<b>4.9</b> (1.7%)	<b>5.6</b> (1.8%)	<b>5.4</b> (1.8%)	<b>9.8</b> (3.2%)	<b>10.5</b> (3.4%)
60 or over 60歲或以上	<b>1.5</b> (0.9%)	<b>0.9</b> (0.6%)	<b>0.6</b> (0.4%)	<b>0.8</b> (0.5%)	<b>1.0</b> (0.6%)	<b>1.3</b> (0.8%)	<b>1.6</b> (1.2%)	<b>1.3</b> (1.0%)	<b>2.2</b> (1.7%)	<b>1.4</b> (1.1%)
Overall 合計	<b>47.4</b> (1.7%)	<b>37.7</b> (1.4%)	<b>29.7</b> (1.1%)	<b>36.6</b> (1.3%)	<b>50.3</b> (1.8%)	<b>54.6</b> (2.0%)	<b>56.9</b> (2.0%)	<b>57.2</b> (1.9%)	<b>97.7</b> (3.2%)	<b>94.1</b> (3.0%)

Note : Figures in bold type refer to number of unemployed persons and bracketed figures are the corresponding unemployment rates.

註釋 : 粗字體的數字為失業人數，括號內數字則為相應的失業率。

#### 4. Changes in underemployment rates

4.1 For underemployment rates, the pattern of change was similar to that for unemployment. In the latter part of the 80s, the underemployment rate experienced a relatively narrow range of fluctuation between 0.7% and 1.0%. It then rose to 1.6% in 1991 but declined to 1.4% in 1994 before climbing to 2.0% in Q1 1996. (Table 3 and Chart 2)

4.2 While the underemployment rates for both males and females had trends similar to that of the overall rate, the underemployment rates for males were consistently higher than those for females. (Table 3 and Chart 2)

#### 4. 就業不足率的變動

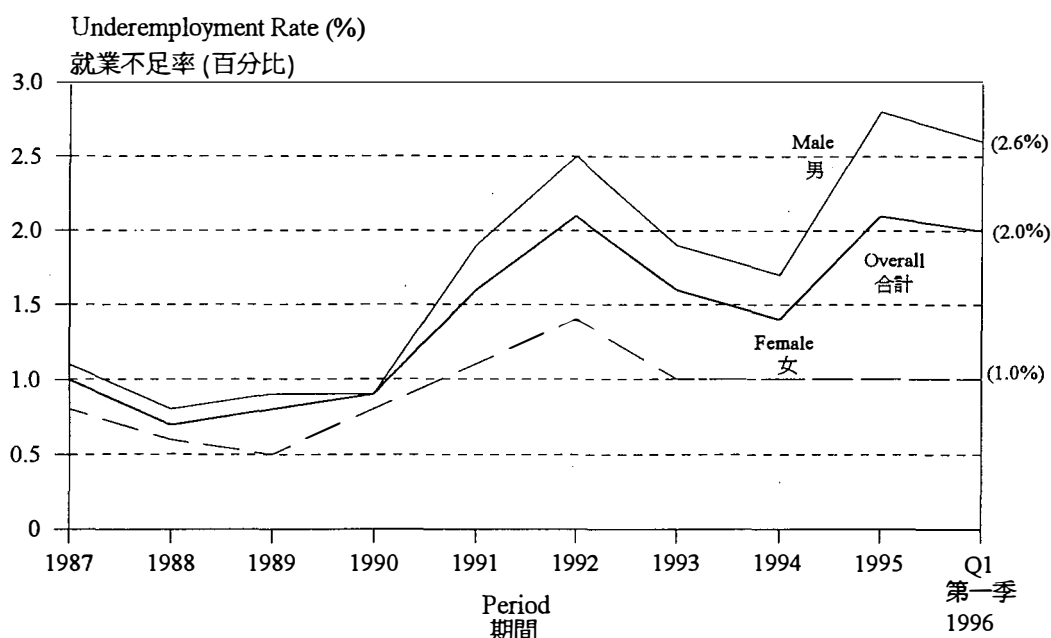
4.1 就業不足率的變動狀況與失業率相似。八〇年代後期，就業不足率的變動幅度不大，介乎 0.7%與 1.0%之間，其後於九一年上升至 1.6%，到九四年則回落至 1.4%，而於九六年第一季回升至 2.0%。(表三和圖二)

4.2 期間雖然男性和女性各自的就業不足率與整體就業不足率的趨勢大致相同，但男性就業不足率持續高於女性就業不足率。(表三和圖二)

**Table 3 Underemployment by sex — number and rate**  
**表三 按性別劃分的就業不足統計 — 人數及比率**

Period 期間	Male 男		Female 女		Overall 合計	
	Number 人數 (‘000)	Rate 比率 (%)	Number 人數 (‘000)	Rate 比率 (%)	Number 人數 (‘000)	Rate 比率 (%)
1987	19.0	1.1	8.5	0.8	27.5	1.0
1988	13.6	0.8	5.7	0.6	19.4	0.7
1989	15.4	0.9	5.5	0.5	20.9	0.8
1990	15.8	0.9	7.6	0.8	23.4	0.9
1991	33.4	1.9	11.1	1.1	44.5	1.6
1992	44.0	2.5	14.3	1.4	58.3	2.1
1993	35.3	1.9	10.8	1.0	46.1	1.6
1994	31.0	1.7	11.0	1.0	42.0	1.4
1995	52.6	2.8	11.9	1.0	64.5	2.1
Jan - Mar 1996 1996年1至3月	50.5	2.6	11.4	1.0	62.0	2.0

**Chart 2 Underemployment rate by sex**  
**圖二 按性別劃分的就業不足率**



4.3 Analysed by age, underemployment rates were usually lower for the age groups under 30 and higher for the age groups over 49. (Table 4)

4.3 按年齡分析，三十歲以下年齡組別的就業不足率通常較低，而四十九歲以上年齡組別的就業不足率則較高。(表四)

**Table 4 Underemployment by age group — number and rate**  
**表四 按年齡組別劃分的就業不足統計 — 人數及比率**

Age group 年齡組別	Period 期間									Thousand 千人
	1987	1988	1989	1990	1991	1992	1993	1994	1995	1996 First Quarter 第一季
15 - 19	<b>1.1</b> (0.8%)	<b>0.7</b> (0.5%)	<b>0.7</b> (0.6%)	<b>0.8</b> (0.7%)	<b>0.7</b> (0.6%)	<b>1.0</b> (1.0%)	<b>0.9</b> (1.0%)	<b>0.5</b> (0.5%)	<b>1.2</b> (1.5%)	<b>2.0</b> (2.3%)
20 - 29	<b>7.5</b> (0.8%)	<b>5.4</b> (0.6%)	<b>4.7</b> (0.5%)	<b>5.4</b> (0.6%)	<b>8.4</b> (1.0%)	<b>10.2</b> (1.2%)	<b>7.8</b> (0.9%)	<b>6.4</b> (0.8%)	<b>8.5</b> (1.0%)	<b>9.2</b> (1.1%)
30 - 39	<b>7.2</b> (1.0%)	<b>5.3</b> (0.7%)	<b>6.3</b> (0.8%)	<b>7.5</b> (0.9%)	<b>14.7</b> (1.7%)	<b>20.7</b> (2.4%)	<b>16.2</b> (1.8%)	<b>14.2</b> (1.5%)	<b>20.9</b> (2.0%)	<b>20.8</b> (2.0%)
40 - 49	<b>4.2</b> (1.0%)	<b>3.2</b> (0.7%)	<b>3.5</b> (0.8%)	<b>4.4</b> (0.9%)	<b>10.0</b> (1.9%)	<b>13.4</b> (2.4%)	<b>11.4</b> (2.0%)	<b>11.8</b> (1.8%)	<b>20.5</b> (3.0%)	<b>20.4</b> (2.8%)
50 - 59	<b>5.1</b> (1.6%)	<b>3.4</b> (1.0%)	<b>3.8</b> (1.2%)	<b>3.9</b> (1.3%)	<b>7.6</b> (2.5%)	<b>9.4</b> (3.2%)	<b>6.6</b> (2.2%)	<b>6.2</b> (2.1%)	<b>10.0</b> (3.3%)	<b>7.2</b> (2.3%)
60 or over 60歲或以上	<b>2.4</b> (1.5%)	<b>1.4</b> (0.9%)	<b>1.8</b> (1.1%)	<b>1.5</b> (0.9%)	<b>3.2</b> (2.0%)	<b>3.7</b> (2.4%)	<b>3.2</b> (2.4%)	<b>2.9</b> (2.3%)	<b>3.4</b> (2.6%)	<b>2.4</b> (1.9%)
Overall 合計	<b>27.5</b> (1.0%)	<b>19.4</b> (0.7%)	<b>20.9</b> (0.8%)	<b>23.4</b> (0.9%)	<b>44.5</b> (1.6%)	<b>58.3</b> (2.1%)	<b>46.1</b> (1.6%)	<b>42.0</b> (1.4%)	<b>64.5</b> (2.1%)	<b>62.0</b> (2.0%)

Note : Figures in bold type refer to number of underemployed persons and bracketed figures are the corresponding underemployment rates.

註釋 : 粗字體的數字為就業不足人數，括號內數字則為相應的就業不足率。

## 5. Analysis of the unemployed population in Q1 1996

5.1 According to the latest available statistics, the number of unemployed persons in Q1 1996 was 94 100. Among them, 66 900 (71.1%) were males and 27 200 (28.9%) were females. (Table 1)

5.2 Analysed by age, the largest number of unemployed persons was in the 20-29 age group. They represented 32.6% of all unemployed persons. (Table 2)

5.3 Among the 94 100 unemployed persons, 63.9% had secondary or matriculation education while 25.3% had primary education. (Table 5)

## 5. 一九九六年第一季的失業人口分析

5.1 根據最新的統計數字，一九九六年第一季的失業人數為 94 100 人，其中男性有 66 900 人 (佔 71.1%)，女性有 27 200 人 (佔 28.9%)。(表一)

5.2 按年齡分析，在一九九六年第一季，二十至二十九歲年齡組別的失業人士為數最多，佔所有失業人士的 32.6%。(表二)

5.3 在 94 100 名失業人士中，63.9%具備中學或預科程度，而 25.3%只達小學程度。(表五)

**Table 5 Unemployed persons by educational attainment, Q1 1996**  
**表五 一九九六年第一季按教育程度劃分的失業人數**

Educational attainment 教育程度	Number 人數 ('000)	% 百分比
No schooling/kindergarten 未受教育/幼稚園	1.8	1.9
Primary 小學	23.8	25.3
Secondary/matriculation 中學/預科	60.1	63.9
Tertiary 專上教育		
- non-degree 非學位	3.9	4.1
- degree 學位	4.6	4.9
Total 總計	94.1	100.0

5.4 For unemployed persons who had a previous job (not including re-entrants into the labour force for whom information on the previous job was not available), analyses of their previous industry and occupation are given below.

5.4 下文是有關曾工作的失業人士 (不包括重新加入勞動人口的失業人士，因沒有關於他們以前從事的資料) 以前從事的行業和職業的分析。

5.5 Analysed by the industry in which the unemployed persons had previously been engaged, 26 300 (or 30.1% of all unemployed persons with a previous job) were from the wholesale, retail and import/export trades, restaurants and hotels sector. In contrast, 4 900 (or 5.6% of all unemployed persons with a previous job) were from the financing, insurance, real estate and business services sector. (Table 6)

5.5 就曾工作的失業人士而言，按以前從事的行業分析，從事批發、零售、進出口貿易、飲食及酒店業的人數為 26 300 人 (佔所有曾工作的失業人士的 30.1%)。相對之下，從事金融、保險、地產及商用服務業的失業人數為 4 900 人 (佔所有曾工作的失業人士的 5.6%)。(表六)

5.6 Further analysis on the detailed industry groups revealed that the largest group of the unemployed persons was from the wholesale and retail trades (10 700), followed by those from the restaurants and hotels sector (10 000). (Table 6)

5.6 按詳細行業的組別進一步分析，以前從事批發及零售業的人數最多，有 10 700 人；其次是從事飲食及酒店業，有 10 000 人。(表六)

5.7 The unemployment rate for the decoration and maintenance industry was highest (8.1%), followed by that for the storage industry (5.9%). (Table 6)

5.7 從事裝修及保養工程業的人士的失業率為最高 (8.1%)，其次是從事倉庫業的人士 (5.9%)。(表六)

**Table 6 Unemployed persons with a previous job by previous industry (Detailed group), Q1 1996**

表六 一九九六年第一季按以前從事的行業(詳細組別)劃分的曾工作的失業人數

Previous industry 以前從事的行業	Number 人數 ('000)	Rate 比率 (%)
<b>Manufacturing</b> 製造業	<b>21.9</b>	<b>4.1</b>
Food and beverage 食品及飲品製造業	0.8	3.4
Clothing and footwear 服裝及鞋類製品業	9.6	5.2
Paper and printing 紙品製造及印刷業	2.3	3.2
Other manufacturing industries 其他產品製造業	9.3	3.5
<b>Construction</b> 建造業	<b>16.0</b>	<b>5.9</b>
Foundation and superstructure 地基及上蓋工程	9.2	4.9
Decoration and maintenance 裝修及保養工程	6.8	8.1

**Table 6 (Cont'd.) Unemployed persons with a previous job by previous industry (Detailed group), Q1 1996**  
**表六 (續) 一九九六年第一季按以前從事的行業(詳細組別)劃分的曾工作的失業人數**

Previous industry 以前從事的行業	Number 人數 ('000)	Rate 比率 (%)
<b>Wholesale, retail and import/export trades, restaurants and hotels</b> 批發、零售、進出口貿易、飲食及酒店業	<b>26.3</b>	<b>2.9</b>
Wholesale/retail 批發/零售業	10.7	2.9
Import/export trades 進出口貿易業	5.5	2.0
Restaurants/hotels 飲食/酒店業	10.0	3.8
<b>Transport, storage and communication</b> 運輸、倉庫及通訊業	<b>8.7</b>	<b>2.5</b>
Transport 運輸業	8.1	2.7
Storage 倉庫業	0.2	5.9
Communication 通訊業	0.4	1.0
<b>Financing, insurance, real estate and business services</b> 金融、保險、地產及商用服務業	<b>4.9</b>	<b>1.4</b>
Financing 金融業	1.2	1.0
Insurance 保險業	0.2	0.9
Real estate and business services 地產及商用服務業	3.5	1.7
<b>Community, social and personal services</b> 社區、社會及個人服務業	<b>9.3</b>	<b>1.4</b>
Public administration 公共行政	0.3	0.2
Education, medical and other health and welfare services 教育、醫療、其他保健及福利服務業	2.0	0.8
Other services 其他服務行業	7.0	2.4
<b>Overall<sup>@</sup></b> 合計 <sup>@</sup>	<b>94.1</b>	<b>3.0</b>

Note : <sup>@</sup> Cover all unemployed persons, including first-time job-seekers and re-entrants into the labour force.  
 註釋 : <sup>@</sup> 涵蓋所有失業人士，包括首次求職人士及重新加入勞動人口的失業人士。

5.8 Analysed by sex, the largest groups of unemployed persons for both males and females were from the wholesale, retail and import/export trades, restaurants and hotels sector, being 16 400 (or 25.6% of all male unemployed persons with a previous job) and 9 800 (or 42.6% of all female unemployed persons with a previous job) respectively. (Table 7)

5.8 按性別分析，無論在男性或女性方面，以前從事批發、零售、進出口貿易、飲食及酒店業的人士，皆為數最多，分別達 16 400 人 (佔所有曾工作的男性失業人士的 25.6%) 和 9 800 人 (佔所有曾工作的女性失業人士的 42.6%)。(表七)

**Table 7 Unemployed persons with a previous job<sup>@</sup> by previous industry and sex, Q1 1996**  
**表七 一九九六年第一季按以前從事的行業及性別劃分的曾工作的失業人數<sup>@</sup>**

Previous industry 以前從事的行業	Male 男		Female 女		Overall 合計	
	Number 人數 (‘000)	% 百分比	Number 人數 (‘000)	% 百分比	Number 人數 (‘000)	% 百分比
Manufacturing 製造業	14.3	22.3	7.6	33.1	21.9	25.1
Construction 建造業	15.6	24.3	0.4	1.9	16.0	18.4
Wholesale, retail and import/export trades, restaurants and hotels 批發、零售、進出口貿易、飲食及酒店業	16.4	25.6	9.8	42.6	26.3	30.1
Transport, storage and communication 運輸、倉庫及通訊業	8.0	12.5	0.7	3.2	8.7	10.0
Financing, insurance, real estate and business services 金融、保險、地產及商用服務業	4.0	6.3	0.9	3.8	4.9	5.6
Community, social and personal services 社區、社會及個人服務業	5.8	9.0	3.5	15.3	9.3	10.7
Total 總計	64.1	100.0	23.1	100.0	87.1	100.0

Note : @ Not including re-entrants into the labour force for whom information on previous industry is not available.  
 註釋 : @ 不包括重新加入勞動人口的失業人士，因為沒有關於他們以前從事行業的資料。

5.9 When analysed by age, for the 15-29 age group, 40.9% of all unemployed persons with a previous job in this age group were from the wholesale, retail and import/export trades, restaurants and hotels sector. As for those in the age groups 30-49 and 50 or over, 31.9% and 31.7% respectively were from the manufacturing industry. (Table 8)

5.9 按年齡分析，在十五至二十九歲年齡組別中，以前從事批發、零售、進出口貿易、飲食及酒店業的人士為數最多，佔該年齡組別曾工作的失業人士的40.9%，而在三十至四十九歲和五十歲或以上的年齡組別中，則以從事製造業的人士為數最多，分別佔31.9%和31.7%。(表八)

**Table 8 Unemployed persons with a previous job<sup>@</sup> by previous industry and age, Q1 1996**  
表八 一九九六年第一季按以前從事的行業及年齡劃分的曾工作的失業人數<sup>@</sup>

Previous industry 以前從事的行業	Age group 年齡組別						Overall 合計	
	15 - 29		30 - 49		≥ 50		Number 人數	% 百分比
	Number 人數 (‘000)	% 百分比	Number 人數 (‘000)	% 百分比	Number 人數 (‘000)	% 百分比	Number 人數 (‘000)	% 百分比
Manufacturing 製造業	5.3	15.2	12.9	31.9	3.7	31.7	21.9	25.1
Construction 建造業	3.9	11.1	8.5	21.0	3.7	31.1	16.0	18.4
Wholesale, retail and import/export trades, restaurants and hotels 批發、零售、進出口貿易、 飲食及酒店業	14.4	40.9	9.4	23.4	2.5	21.0	26.3	30.1
Transport, storage and communication 運輸、倉庫及通訊業	3.4	9.7	4.3	10.6	1.1	9.3	8.7	10.0
Financing, insurance, real estate and business services 金融、保險、地產及商用服務業	2.6	7.5	2.0	4.9	0.3	2.6	4.9	5.6
Community, social and personal services 社區、社會及個人服務業	5.5	15.6	3.3	8.2	0.5	4.3	9.3	10.7
Total 總計	35.1	100.0	40.2	100.0	11.8	100.0	87.1	100.0

Note : @ Not including re-entrants into the labour force for whom information on previous industry is not available.  
註釋 : @ 不包括重新加入勞動人口的失業人士，因為沒有關於他們以前從事的行業的資料。

5.10 With regard to the distribution by previous occupation of the unemployed persons in Q1 1996, those who had previously been craft and related workers constituted the largest group, being 21 100 (or 24.2% of all unemployed persons with a previous job). On the other hand, the number and the proportion of those who had previously been professionals were smallest among all occupational groups, being 800 or 0.9% respectively. (Table 9)

5.10 就曾工作的失業人士，按以前從事的職業分析，以九六年第一季計算，從事工藝及有關人員為數最多，有 21 100 人 (佔所有曾工作的失業人士的 24.2%)。另一方面，從事專業人員的失業人士在所有職業組別中為數最少，有 800 人，佔 0.9%。(表九)

5.11 For males, the largest proportion of those unemployed were previously craft and related workers, being 31.9% of all male unemployed persons with a previous job. For females, the largest proportion was clerks, being 29.7% of all female unemployed persons with a previous job. (Table 9)

5.11 就男性而言，曾任職工藝及有關人員的人士為數最多，佔所有曾工作的男性失業人士的 31.9%；而女性則以曾任職文員的人士為數最多，佔所有曾工作的女性失業人士的 29.7%。(表九)

**Table 9 Unemployed persons with a previous job<sup>@</sup> by previous occupation and sex, Q1 1996**  
**表九 一九九六年第一季按以前從事的職業及性別劃分的曾工作的失業人數<sup>@</sup>**

Previous occupation 以前從事的職業	Male 男		Female 女		Overall 合計	
	Number 人數 (‘000)	% 百分比	Number 人數 (‘000)	% 百分比	Number 人數 (‘000)	% 百分比
Managers and administrators 經理及行政級人員	2.4	3.7	0.5	2.3	2.9	3.3
Professionals 專業人員	0.6	0.9	0.2	1.0	0.8	0.9
Associate professionals 輔助專業人員	5.6	8.8	2.0	8.6	7.6	8.7
Clerks 文員	4.3	6.7	6.9	29.7	11.1	12.8
Service workers and shop sales workers 服務工作及商店銷售人員	10.7	16.7	6.4	27.5	17.1	19.6
Craft and related workers 工藝及有關人員	20.5	31.9	0.7	2.8	21.1	24.2
Plant and machine operators and assemblers 機台及機器操作員及裝配員	8.1	12.6	4.2	18.0	12.3	14.1
Elementary occupations 非技術工人	12.0	18.7	2.3	10.1	14.3	16.4
Total 總計	64.1	100.0	23.1	100.0	87.1	100.0

Note : @ Not including re-entrants into the labour force for whom information on previous occupation is not available.  
 註釋 : @ 不包括重新加入勞動人口的失業人士，因為沒有關於他們以前從事職業的資料。

5.12 For the 15-29 age group, the largest proportion was service workers and shop sales workers, being 27.9% of all unemployed persons with a previous job in this age group. For the age groups 30-49 and 50 or over, the largest proportion was craft and related workers, being 29.3% and 28.2% respectively. (Table 10)

5.12 在十五至二十九歲年齡組別中，以前任職服務工作及商店銷售人員的人士佔該年齡組別所有曾工作的失業人士最大比例，為 27.9%。至於在三十至四十九歲和五十歲或以上的年齡組別中，任職工藝及有關人員佔最大比例，分別為 29.3% 和 28.2%。(表十)

**Table 10 Unemployed persons with a previous job<sup>@</sup> by previous occupation and age, Q1 1996**  
**表十 一九九六年第一季按以前從事的職業及年齡劃分的曾工作的失業人數<sup>@</sup>**

Previous occupation 以前從事的職業	Age group 年齡組別							
	15 - 29		30 - 49		≥ 50		Overall 合計	
	Number 人數 (‘000)	% 百分比	Number 人數 (‘000)	% 百分比	Number 人數 (‘000)	% 百分比	Number 人數 (‘000)	% 百分比
Managers and administrators 經理及行政級人員	0.6	1.6	1.9	4.7	0.4	3.7	2.9	3.3
Professionals 專業人員	0.5	1.3	0.3	0.8	0	0	0.8	0.9
Associate professionals 輔助專業人員	4.0	11.3	3.1	7.7	0.5	4.4	7.6	8.7
Clerks 文員	7.3	20.7	3.4	8.4	0.5	3.8	11.1	12.8
Service workers and shop sales workers 服務工作及商店銷售人員	9.8	27.9	5.9	14.6	1.4	11.8	17.1	19.6
Craft and related workers 工藝及有關人員	6.0	17.1	11.8	29.3	3.3	28.2	21.1	24.2
Plant and machine operators and assemblers 機台及機器操作員及裝配員	3.1	8.7	6.8	16.8	2.4	20.6	12.3	14.1
Elementary occupations 非技術工人	4.0	11.3	7.1	17.7	3.2	27.4	14.3	16.4
Total 總計	35.1	100.0	40.2	100.0	11.8	100.0	87.1	100.0

Note : @ Not including re-entrants into the labour force for whom information on previous occupation is not available.  
 註釋 : @ 不包括重新加入勞動人口的失業人士，因為沒有關於他們以前從事職業的資料。

## 6. Analysis of the underemployed population in Q1 1996

6.1 There were altogether 62 000 underemployed persons in Q1 1996. Analysed by sex, male and female underemployed persons constituted some 81.5% and 18.5% of all underemployed persons respectively. (Table 3)

6.2 In Q1 1996, the largest number and proportion of underemployed persons belonged to the age groups 30-39 and 40-49. Together, they comprised 41 200 or 66.5% of all underemployed persons. (Table 4)

6.3 In Q1 1996, among all the underemployed persons, those who had attained secondary or matriculation education and primary education constituted the largest two groups, being 33 200 (or 53.6% of all underemployed persons) and 24 400 (or 39.3% of all underemployed persons) respectively. (Table 11)

## 6. 一九九六年第一季的就業不足人口分析

6.1 一九九六年第一季的就業不足人數為 62 000 人。按性別分析，男性和女性的就業不足人士分別佔所有就業不足人士的 81.5% 和 18.5%。(表三)

6.2 九六年第一季，在所有就業不足人士中，為數最多的年齡組別為三十至三十九歲及四十至四十九歲，合共 41 200 人，佔所有就業不足人士的 66.5%。(表四)

6.3 九六年第一季，在所有就業不足人士中，已達中學或預科程度和只達小學程度的人士為數最多，分別有 33 200 人（佔所有就業不足人士的 53.6%）和 24 400 人（佔所有就業不足人士的 39.3%）。（表十一）

**Table 11 Underemployed persons by educational attainment, Q1 1996**  
**表十一 一九九六年第一季按教育程度劃分的就業不足人數**

Educational attainment 教育程度	Number 人數 ('000)	% 百分比
No schooling/kindergarten 未受教育/幼稚園	3.3	5.4
Primary 小學	24.4	39.3
Secondary/matriculation 中學/預科	33.2	53.6
Tertiary 專上教育		
- non-degree 非學位	0.4	0.7
- degree 學位	0.7	1.1
Total 總計	62.0	100.0

6.4 Analysed by industry, 31 000 underemployed persons (or 50.0% of all underemployed persons) were in the construction industry. In contrast, 200 (or 0.3% of all underemployed persons) were in the financing, insurance, real estate and business services sector. (Table 12)

6.4 按行業分析，從事建造業的就業不足人數為 31 000 人（佔所有就業不足人士的 50.0%）。相對之下，從事金融、保險、地產及商用服務業的就業不足人數為 200 人（佔所有就業不足人士的 0.3%）。(表十二)

6.5 Further analysis on the detailed industry groups revealed that both the number of underemployed persons and the underemployment rate were largest in the decoration and maintenance industry, being 15 900 and 19.0% respectively, followed by the foundation and superstructure industry, which had 15 100 underemployed persons and an underemployment rate of 8.1%. (Table 12)

6.5 按詳細行業的組別進一步分析，從事裝修及保養工程的就業不足人士數目和就業不足率均最高，分別為 15 900 人和 19.0%，其次是從事地基及上蓋工程，分別為 15 100 人和 8.1%。(表十二)

**Table 12 Underemployed persons by industry (Detailed group), Q1 1996**  
表十二 一九九六年第一季按行業(詳細組別)劃分的就業不足人數

Industry 行業	Number 人數 ('000)	Rate 比率 (%)
<b>Manufacturing</b> 製造業	<b>10.6</b>	<b>2.0</b>
Food and beverage 食品及飲品製造業	0.2	0.9
Clothing and footwear 服裝及鞋類製品業	8.0	4.4
Paper and printing 紙品製造及印刷業	0.4	0.5
Other manufacturing industries 其他產品製造業	2.1	0.8
<b>Construction</b> 建造業	<b>31.0</b>	<b>11.4</b>
Foundation and superstructure 地基及上蓋工程	15.1	8.1
Decoration and maintenance 裝修及保養工程	15.9	19.0
<b>Wholesale, retail and import/export trades, restaurants and hotels</b> 批發、零售、進出口貿易、飲食及酒店業	<b>5.1</b>	<b>0.6</b>
Wholesale/retail 批發/零售業	1.4	0.4
Import/export trades 進出口貿易業	0.3	0.1
Restaurants/hotels 飲食/酒店業	3.5	1.3

**Table 12 (Cont'd) Underemployed persons by industry (Detailed group), Q1 1996**  
**表十二 (續) 一九九六年第一季按行業(詳細組別)劃分的就業不足人數**

Industry 行業	Number 人數 ('000)	Rate 比率 (%)
<b>Transport, storage and communication</b> 運輸、倉庫及通訊業	<b>10.4</b>	<b>3.0</b>
Transport 運輸業	9.6	3.2
Storage 倉庫業	0	0
Communication 通訊業	0.8	1.9
<b>Financing, insurance, real estate and business services</b> 金融、保險、地產及商用服務業	<b>0.2</b>	<b>0.1</b>
Financing 金融業	0	0
Insurance 保險業	0	0
Real estate and business services 地產及商用服務業	0.2	0.1
<b>Community, social and personal services</b> 社區、社會及個人服務業	<b>4.5</b>	<b>0.7</b>
Public administration 公共行政	0	0
Education, medical and other health and welfare services 教育、醫療、其他保健及福利服務業	0.9	0.3
Other services 其他服務行業	3.6	1.2
<b>Others</b> 其他	<b>0.1</b>	<b>0.3</b>
<b>Overall</b> 合計	<b>62.0</b>	<b>2.0</b>

6.6 For males, the largest group was in the construction industry, being 30 800 or 60.9% of all male underemployed persons. For females, the largest group was in the manufacturing industry, amounting to 6 100 or 53.2% of all female underemployed persons. (Table 13)

6.6 就男性而言，從事建造業的就業不足人士為數最多，達 30 800 人，佔所有男性就業不足人士的 60.9%；女性則以從事製造業的人士為數最多，達 6 100 人，佔所有女性就業不足人士的 53.2%。(表十三)

**Table 13 Underemployed persons by industry and sex, Q1 1996**  
**表十三 一九九六年第一季按行業及性別劃分的就業不足人數**

Industry 行業	Male 男		Female 女		Overall 合計	
	Number 人數 ('000)	% 百分比	Number 人數 ('000)	% 百分比	Number 人數 ('000)	% 百分比
Manufacturing 製造業	4.6	9.0	6.1	53.2	10.6	17.2
Construction 建造業	30.8	60.9	0.2	1.9	31.0	50.0
Wholesale, retail and import/export trades, restaurants and hotels 批發、零售、進出口貿易、飲食及酒店業	2.5	5.0	2.6	22.9	5.1	8.3
Transport, storage and communication 運輸、倉庫及通訊業	10.0	19.7	0.4	3.7	10.4	16.8
Financing, insurance, real estate and business services 金融、保險、地產及商用服務業	0	0	0.2	1.8	0.2	0.3
Community, social and personal services 社區、社會及個人服務業	2.6	5.1	1.9	16.5	4.5	7.2
Others 其他	0.1	0.2	0	0	0.1	0.2
Total 總計	50.5	100.0	11.4	100.0	62.0	100.0

6.7 Analysed by age, the largest proportion of underemployed persons was in the construction industry for all age groups. (Table 14)

6.7 按年齡分析，從事建造業的就業不足人士在所有年齡組別中，均佔最大比例。(表十四)

**Table 14 Underemployed persons by industry and age, Q1 1996**

**表十四 一九九六年第一季按行業及年齡劃分的就業不足人數**

Industry 行業	Age group 年齡組別						Overall 合計	
	15 - 29		30 - 49		≥ 50		Number 人數 (‘000)	% 百分比
	Number 人數 (‘000)	% 百分比	Number 人數 (‘000)	% 百分比	Number 人數 (‘000)	% 百分比		
Manufacturing 製造業	0.8	7.1	7.2	17.6	2.6	27.2	10.6	17.2
Construction 建造業	5.2	46.7	21.6	52.5	4.2	43.4	31.0	50.0
Wholesale, retail and import/export trades, restaurants and hotels 批發、零售、進出口貿易、 飲食及酒店業	1.1	10.0	3.2	7.7	0.8	8.7	5.1	8.3
Transport, storage and communication 運輸、倉庫及通訊業	2.5	22.6	6.4	15.5	1.5	15.4	10.4	16.8
Financing, insurance, real estate and business services 金融、保險、地產及商用服務業	0	0	0.2	0.5	0	0	0.2	0.3
Community, social and personal services 社區、社會及個人服務業	1.5	13.7	2.5	6.0	0.5	5.3	4.5	7.2
Others 其他	0	0	0.1	0.3	0	0	0.1	0.2
<b>Total 總計</b>	<b>11.1</b>	<b>100.0</b>	<b>41.2</b>	<b>100.0</b>	<b>9.6</b>	<b>100.0</b>	<b>62.0</b>	<b>100.0</b>

6.8 Analysed by occupation, the largest group of male underemployed persons was craft and related workers, which amounted to 28 900 (or 57.1% of all male underemployed persons); while the largest group of female underemployed persons was plant and machine operators and assemblers, amounting to 4 000 or 34.6% of all female underemployed persons. (Table 15)

6.8 按職業分析，就男性的就業不足人士而言，任職工藝及有關人員為數最多，達 28 900 人 (佔所有男性就業不足人士的 57.1%)；女性則以任職機台及機器操作員及裝配員為數最多，達 4 000 人，佔所有女性就業不足人士的 34.6%。(表十五)

**Table 15 Underemployed persons by occupation and sex, Q1 1996**  
**表十五 一九九六年第一季按職業及性別劃分的就業不足人數**

Occupation 職業	Male 男		Female 女		Overall 合計	
	Number 人數 (‘000)	% 百分比	Number 人數 (‘000)	% 百分比	Number 人數 (‘000)	% 百分比
Managers and administrators 經理及行政級人員	0.3	0.7	0.1	0.9	0.5	0.7
Professionals 專業人員	0	0	0	0	0	0
Associate professionals 輔助專業人員	0.8	1.6	0.3	2.7	1.1	1.8
Clerks 文員	0.3	0.6	1.1	9.2	1.3	2.2
Service workers and shop sales workers 服務工作及商店銷售人員	2.4	4.8	2.0	17.6	4.4	7.2
Craft and related workers 工藝及有關人員	28.9	57.1	0.5	4.6	29.4	47.4
Plant and machine operators and assemblers 機台及機器操作員及裝配員	7.3	14.5	4.0	34.6	11.3	18.2
Elementary occupations 非技術工人	10.5	20.7	3.5	30.4	14.0	22.5
Total 總計	50.5	100.0	11.4	100.0	62.0	100.0

6.9 When analysed by age, the largest proportion of underemployed persons was craft and related workers in all age groups. (Table 16)

6.9 按年齡分析，任職工藝及有關人員的就業不足人士，在所有年齡組別中均佔最大比例。(表十六)

**Table 16 Underemployed persons by occupation and age, Q1 1996**

**表十六 一九九六年第一季按職業及年齡劃分的就業不足人數**

Occupation 職業	Age group 年齡組別							
	15 - 29		30 - 49		≥ 50		Overall 合計	
	Number 人數 (‘000)	% 百分比	Number 人數 (‘000)	% 百分比	Number 人數 (‘000)	% 百分比	Number 人數 (‘000)	% 百分比
Managers and administrators 經理及行政級人員	0	0	0.5	1.1	0	0	0.5	0.7
Professionals 專業人員	0	0	0	0	0	0	0	0
Associate professionals 輔助專業人員	0.1	1.1	1.0	2.5	0	0	1.1	1.8
Clerks 文員	1.0	9.2	0.3	0.8	0	0	1.3	2.2
Service workers and shop sales workers 服務工作及商店銷售人員	1.4	12.1	2.6	6.2	0.5	5.4	4.4	7.2
Craft and related workers 工藝及有關人員	5.5	49.7	20.2	49.1	3.6	37.6	29.4	47.4
Plant and machine operators and assemblers 機台及機器操作員及裝配員	1.0	9.1	8.3	20.1	2.0	20.4	11.3	18.2
Elementary occupations 非技術工人	2.1	18.8	8.3	20.3	3.5	36.6	14.0	22.5
Total 總計	11.1	100.0	41.2	100.0	9.6	100.0	62.0	100.0