



HONG KONG 1986 BY-CENSUS

District Board District Tabulations Wan Chai

Census and Statistics Department
Hong Kong



這份刊物的 PDF 版本的文字是從印刷版掃描而成，再利用光學字符識別軟件轉換成電子格式。由於原印刷版本已印製並保存多年，光學字符識別技術未必能準確地識別某些文字或數字。因此，搜索或複製此 PDF 檔案內的文字時應加以注意。

The text of this PDF publication was scanned from its printed version and then converted to electronic text using Optical Character Recognition (OCR) software. Because of the age and condition of the original printed copy, the OCR may not recognise certain characters or figures accurately. Caution should therefore be taken when searching or copying text from this PDF publication.

HONG KONG 1986 BY-CENSUS

**District Board District Tabulations
Wan Chai**

**Census and Statistics Department
Hong Kong**

Contents

	Page
Foreword	v
Explanatory Notes	vii
District Tables	
1. Type of Living Quarters and Number of Domestic Households	1
2. Type of Living Quarters and Number of Occupants	2
3. Accommodation and Household Size	4
4. Accommodation and Household Rent	6
5. Type of Living Quarters and Household Income	8
6. Usual Household Size and Household Composition	10
7. Household Size and Number of Working Household Members	12
8. Age and Marital Status	13
9. Age and Educational Attainment	14
10. Age and School Attendance	16
11. Age and Activity Status (Economically Inactive)	17
12. Age and Activity Status (Economically Active)	18
13. Occupation and Industry	20
14. Age and Income from Main Employment	22
15. Age and Population Movement	24
Map	

Foreword

This report presents the final results of the 1986 By-census conducted in March 1986. It contains basic cross-tabulations covering the broad range of demographic, social and economic characteristics of the population in Wan Chai.

Figures in this report refer to the land-based population of Hong Kong on 11 March 1986, excluding transients, Vietnamese refugees and residents who were temporarily away from Hong Kong on the census reference night. Due to lack of a complete frame of vessels, the sampling method employed in the By-census does not enable a separate estimate of the marine population to be made for each district. On the other hand, an adjustment has been made to the enumerated population in each district to allow for persons in non-contact households. A map showing the district boundaries of Wan Chai is attached to the report.

The 1986 By-census was based on a one-in-seven sample of the population. Estimates obtained from the By-census are subject to sampling error; and this is approximately in inverse proportion to the sample size. Therefore, figures for small districts have large sampling errors and should be used with caution.

Detailed analysis and interpretation of the By-census results will be presented in the Main Report to be published in late 1987.

April 1987

R. Butler
Commissioner for Census & Statistics

Explanatory Notes

Introduction

This report contains basic cross-tabulations covering the following items of information on the population in each district:

LIVING QUARTERS

- Type of living quarters
- Number of domestic households in living quarters
- Number of occupants in living quarters

HOUSEHOLDS

- Accommodation
- Household size
- Household rent
- Household income
- Usual household size
- Household composition
- Working household members

PERSONS

- Age and sex
- Marital status
- Educational attainment
- School attendance
- Activity status
- Occupation
- Industry
- Income from main employment
- Population movement

The 1986 By-census was based on a one-in-seven sample of the population of Hong Kong. Information on detailed social, economic and demographic characteristics was collected from all persons in the households in the sampled living quarters. Estimates were derived from the information collected from these households/persons.

Definition of Terms

District Board district—The geographic area delineated by the City and New Territories Administration for district administration purposes. There are totally 19 District Board districts; four on Hong Kong Island; six in Kowloon and New Kowloon and nine in the New Territories.

Living Quarters—This includes:

- quarters built for residential purposes irrespective of whether there is anybody living there; and
- quarters built for non-residential purposes which normally has one or more persons living there or was occupied on the census reference night.

Structurally, a living quarters must be internally connected so that the occupants could move between the rooms/cubicles without going outside onto a public corridor, landing or staircase. It must also have a direct external access to a street, public corridor, landing or staircase without going through another quarters. In this report, all figures on living quarters refer to quarters where occupants were present on the census reference night.

Domestic Household—This comprises a group of persons, related family members with/without unrelated persons or unrelated persons only, who live together in the same living quarters and share the food of the household. The expenditure of the household is borne by one or more household members. This also includes any person who lives alone and is responsible for his/her own meals.

Type of Living Quarters—A living quarters is classified by the type of building in which the living quarters is located.

A building is classified in accordance with the following scheme:

- (a) by the purpose for which the building is built;
- (b) by the type of materials used; and
- (c) by the sector responsible for its construction/management.

Self-contained Quarters—A living quarters with internal piped water supply and a flush toilet system.

Housing Authority Rental Blocks (Group A)—These are Government Low Cost Housing Blocks and other buildings under the management of the Hong Kong Housing Authority. Units in these blocks are self-contained. Converted Mark I to Mark III blocks are also grouped in this category.

Housing Authority Rental Blocks (Group B)—These are buildings formerly managed by the Resettlement Department but have been put under the management of the Hong Kong Housing Authority since 1973. They can be divided into Mark I to Mark VI estates. Units in Mark I to Mark III are non self-contained.

Housing Authority Home Ownership Estates—These are self-contained living quarters built and managed by the Hong Kong Housing Authority under the Home Ownership Scheme, the Private Sector Participation Scheme and the Middle-income Housing Scheme.

Private Housing Blocks (Self-contained)—These include self-contained living quarters in apartments and other multi-storey blocks owned by the private sector for residential purposes. Living quarters in Housing Society Urban Improvement Scheme estates are also included in this category.

Villas/Bungalows—These include self-contained living quarters in modern houses of one to three storeys. The design of the houses is more deluxe.

Modern Village Houses—These include self-contained living quarters in relatively modern design village houses of two to three storeys. The roofs of these houses are often laid horizontally.

Simple Stone Structures—These include non self-contained living quarters in one to two storeys houses built of stone and/or other permanent or semi-permanent materials. Units in traditional village houses are also grouped in this category.

Institutions—These include units in hospitals, old people's homes, religious houses, maternity homes, prison cells and Army Barracks etc.

Other Permanent Housing—These include units in hotels, boarding houses and other similar residential institutions. Living quarters in commercial, manufacturing and other non-domestic buildings are also grouped in this category.

Roof-top Structures—These are structures built of temporary or semi-permanent materials on the roofs of permanent buildings.

Other Private Temporary Housing—These are structures built of temporary materials (other than roof-top structures) including contractor's matsheds, nissen huts, other private temporary huts and places not intended for residential purposes (e.g. landings, staircases, corridors etc.) but were occupied on the census reference night.

Number of Domestic Households in Living Quarters—This refers to the number of domestic households found to be in a living quarters on the census reference night. Hence, the number of domestic households in a living quarters will be zero if it contains collective households only.

Number of Occupants in Living Quarters—This refers to the number of persons found to be in a living quarters on the census reference night.

Accommodation—This refers to the living space occupied by the household on the census reference night.

Whole house/flat—This refers to a whole flat/floor/house occupied by one household.

Room/Cubicle—This refers to the part of a living quarters enclosed by fixed partitions occupied by one household.

Bedspace/Cockloft, etc.—These include bedspace, cockloft (i.e. a raised platform or a kind of a gallery inside a shop or a house usually intended for storage but actually used for living purposes), accommodation outside a living quarters (e.g. staircases, street-sides) and premises not intended for living (e.g. shops, workshops, storerooms and schools) but were occupied on the census reference night.

Household Size—This refers to the number of persons found to be in the household on the census reference night.

Household Rent—The amount paid for the month of March 1986 by a household for occupying the accommodation, after deducting any housing allowance/subsidies received.

Household Income—This refers to the total income (including earnings in cash from employment and other cash incomes for February 1986) of all persons who were found to be in the household on the census reference night.

Usual Household Size—This refers to the number of persons who spent most of the nights in the household during the three months before enumeration in the By-census. Hence, the usual household size will be zero if all persons found on the census reference night did not spend most of the nights there during the three months before the enumeration.

Household Composition—Household composition is derived from the 'relationship to the head of household' of each usual household member enumerated in a domestic household. It shows the structure of a household in terms of (a) the number of family nuclei and (b) the relationship between the family nucleus and other related household members.

Family nucleus—This consists of one of the following combinations:

- (a) a married couple without children,
- (b) a married couple with one or more never married children, or
- (c) one parent (either father or mother) with one or more never married children.

One unextended nuclear family—A household comprising one family nucleus without other related persons.

One vertically extended nuclear family—A household comprising one family nucleus with one or more related persons not of the same generation. It may or may not include other related persons of the same generation.

One horizontally extended nuclear family—A household comprising one family nucleus with one or more related persons of the same generation but without any other related persons of a different generation.

Two or more nuclear families—A household comprising two or more family nuclei whose members may or may not be related in anyway.

Working Household Members—This refers to members of the household who performed some work for a wage/salary during the seven days before enumeration in the By-census.

Age—The number of complete years a person has passed since birth.

Marital Status—The status of a person in relation to marriage. The marital status of a person was recorded according to the actual situation as reported by the respondent in the By-census. There was no check on whether the marriage/divorce had undergone any kind of legal registration or whether any kind of ceremony had ever been taken place.

Educational Attainment—This refers to the highest level of education ever attained by a person in school or other educational institution, regardless of whether he/she had passed the course. Only formal courses, as defined below, are counted as educational attainment:

- (i) it lasts at least one academic year's duration;
- (ii) it requires specific academic entrance qualifications; and
- (iii) it includes an examination for assessment purposes.

Primary—Including Primary 1–6 in all schools.

Lower secondary—Including Middle 1–3 in Chinese schools or Form 1–3 in English or Anglo-Chinese schools.

Upper secondary—Including Middle 4–5 in Chinese schools or Form 4–5 in English or Anglo-Chinese schools.

Matriculation—Including Middle 6 in Chinese schools or Form 6–7 in English or Anglo-Chinese schools.

Craft courses in Technical Institute—Including Craft/Apprenticeship courses in Technical Institutes.

Certificate/Ordinary Diploma courses in Technical Institute/Polytechnic—Including Diploma/Certificate courses in commercial schools, Ordinary Diploma or Ordinary/Higher Certificate courses in Polytechnics or Technical Institutes, but excluding Endorsement Certificate/Associateship/Professional Diploma courses.

Tertiary education (Non-degree courses)—Including all Higher Diploma/Endorsement, Associateship and other non-degree courses in Polytechnics and other Post-secondary Colleges. Diploma/Certificate courses in Colleges of Education and the Technical Teacher's Colleges, and nurse training courses are also grouped in this category.

Tertiary education (Degree courses)—Including all first degree courses and post-graduate courses of universities in Hong Kong and overseas.

Main Employment (or Activity) Status—This refers to the status of a person in relation to economic activity in society. The population may be broadly divided into two main groups: (A) economically inactive population and (B) economically active population (the labour force) as follows:

(A) Economically inactive population—This refers to persons who did not have a job and were not at work during the seven days before enumeration in the By-census, excluding persons who were on leave during the reference period and persons who were unemployed. Included in this category are home-makers, students, persons of independent means, retired persons and other economically inactive.

Home-maker—A person who looks after the home without pay.

Student—A person who is studying full-time in school or other educational institution (student workers are classified as economically active persons and are not included in this group. Persons who are self-studying, or studying informal courses in miscellaneous training institutes or studying evening courses and were not working during the seven days before the enumeration of the By-census are also included in this category).

Of independent means—Persons who do not have to work for a living. They live by either renting or subletting a house or flat (or part of a house/flat), or on capital accumulated in previous years, or on income from investments or on remittances from overseas.

Retired person—A person who has worked previously but is not currently working because of old age.

Other economically inactive—Economically inactive persons not elsewhere classified, e.g. persons who cannot work or do not seek work because of sickness or disablement and unpaid religious workers.

(B) Economically active population (the labour force)—This comprises the employed (working population) and the unemployed.

The employed—This refers to persons aged 15 and above who performed some work for a wage/salary or were on leave/holiday during the seven days before enumeration in the By-census. Included in this category are:

Self-employed—A person who works on his/her own account, neither employed by someone else nor employing others.

Employer—A person who works on his/her own account and employs one or more persons to work for him/her.

Outworker—An employee who is free to take his/her work home or anywhere he/she likes.

Employee (Public Sector)—A person who works for a wage/salary in local government or overseas government. Employees of government subsidised organisations, such as Trade Development Council, Productivity Centre, Universities, Polytechnics, ICAC are excluded from this category.

Employee (Private Sector)—A person who works for a wage/salary in private/government subsidised organisations. Including in this category are domestic helpers working for wages.

Unpaid family worker—A person who lives with his/her family and does work (not domestic work) as part of the family enterprise in return for food and lodging.

Student worker—A full-time student who performed some work for a wage/salary during the seven days before enumeration in the By-census.

The unemployed—This refers to persons aged 15 and above and not of independent means who were not at work during the seven days before enumeration in the By-census but were seeking work and available for work. This excludes those who were on leave/holiday during the reference period but includes:

- (a) job-seekers who were not available for work because of temporary sickness/injury; and
- (b) those who were available for work but not seeking work because they
 - (i) were waiting to take up a new job;
 - (ii) expected to be called back to work; and
 - (iii) believed suitable work was not available.

Occupation—This refers to the kind of work a person performed during the seven days before enumeration in the By-census. The classification used follows the major groups of the International Standard Classification of Occupation. Unemployed persons having had a previous job are classified by their last occupation.

Professional, technical and related workers—Including qualified professional scientists, doctors, dentists; architects, engineers, surveyors; marine and aviation officers and engineers; university academic staff; qualified teachers; economists, statisticians, mathematicians, system analysts, computer programmers; lawyers, accountants; members of religious orders; writers; artists, sportsmen, librarians, social workers; qualified nurses and mid-wives and other para-medical workers; other technicians.

Administrative and managerial workers—Including administrative officers in government service; consular staff; directors, managers and working proprietors in industry, commerce, transport and services sectors, but excluding those in wholesale and retail trade, import and export trade and in catering and lodging services, and farm managers.

Clerical and related workers—Including executive officers in government service; stenographers and typists; punching and computing machine operators; bookkeepers and clerks of any kind; transport conductors, postmen, telephone operators, ship's radio officers, flight radio operators.

Sales workers—Including managers and working proprietors in wholesale and retail trade, import and export trade; sales supervisors, salesmen, shop assistants, hawkers.

Service workers—Including managers and working proprietors in catering and lodging services, hotel and domestic staff, building caretakers, laundry workers, barbers and hairdressers, staff of the police and other disciplined services, tourist guides, other service workers.

Agricultural, animal husbandry and forestry workers and fishermen—Including master farmers, farm hands, gardeners in parks; master fishermen, fish farmers, oyster culturists.

Production and related workers, transport equipment operators and labourers—Including foremen and supervisors in manufacturing and construction industries; miners and quarrymen; wood, metal and chemical processors; food and beverage processors, tobacco workers; textile workers; tailors, other clothing workers; shoemakers, other leather workers; blacksmiths, tool-makers, fitters, machinists; radio and electrical workers; printing and painting workers; musical instrument makers, other production workers; brick-layers, carpenters, other construction workers; stationary engine operators; hand packers, dockers, loaders; riggers, crane operators; seamen, drivers, light-house operators.

Armed forces and unclassifiable—Including members of the armed services of Britain and other countries; persons in occupations inadequately described or unclassifiable.

Industry—This refers to the main kind of goods or services produced by the establishment in which a person worked during the seven days before enumeration in the By-census. The classification used follows the major divisions of the International Standard Industrial Classification. Unemployed persons having had a previous job are classified by their last industry.

Agriculture and fishing—Including growing of rice, vegetables, flowers, fruits; keeping of pigs and poultry; beam trawling, single-boat stern trawling, pair trawling, long lining, hand lining, purse seining, gill netting; oyster and pond fish culture.

Mining and quarrying—Including metal ore mining and processing, stone quarrying.

Manufacturing (textile and wearing apparel)—Including spinning of cotton and yarn, weaving and knitting of cotton and other fabrics; bleaching, dyeing, finishing; manufacturing of wearing apparel, knitwear and other made-up textile goods; manufacturing of carpets, cordages, ropes and twines.

Manufacturing (others)—Including manufacturing of food, beverage, tobacco, footwear, leather products, rubber products, plastic products, wood products, printed matters and paper products, metal products, machinery, chemicals, chemical products, glass, pottery.

Electricity, gas and water—Including electric light and power, town gas, water supply.

Construction—Including building construction, civil engineering, plumbing, electrical wiring, air-conditioning installation and repair.

Wholesale and retail trade, restaurants and hotels—Including wholesale and retail trade, import and export trade, hawkers, peddlers, Chinese general brokers, other commercial agents; restaurants, cafes, hotels, rooming houses.

Transport, storage and communication—Including land transport, water transport, air transport, services allied to transport, storage and warehousing, posts, telecommunications.

Financing, insurance, real estate and business services—Including finance, insurance, real estate; offices of lawyers, accountants, auditors, architects, surveyors, advertising agents; data processing services; chambers of commerce and trade unions.

Services—Including government services, the armed forces; education services, medical, dental and other health services, sanitary services; welfare institutions, religious organisations; cinemas, theatres, radio and television broadcasting, libraries, museums; electrical repair shops, automobile repair garages; other household and personal services.

Unclassifiable—Including persons in industries inadequately described or unclassifiable.

Income from Main Employment—For employers or self-employed persons, this is the amount earned excluding expenses incurred in running their main business; for employees, this is the total amount earned from their main employment including salary or wages, bonus, commission, overtime, tips and other cash allowances. Housing allowance and New Year bonus/double pay are excluded. The amount recorded refers to the calendar month before the By-census.

Table 1 TYPE OF LIVING QUARTERS AND NUMBER OF DOMESTIC HOUSEHOLDS

<i>Type of Living Quarters</i>	<i>Number of Domestic Households in Living Quarters</i>					<i>Average Degree of Sharing</i>
	<i>0</i>	<i>1</i>	<i>2</i>	<i>3 and over</i>	<i>Total</i>	
Housing Authority rental blocks						
Group A	—	—	—	—	—	—
Group B	—	—	—	—	—	—
Housing Authority cottages	—	322	21	—	343	1.06
Housing Authority temporary huts	—	—	—	—	—	—
Housing Society rental blocks	—	—	—	—	—	—
Housing Authority home ownership estates	—	—	—	—	—	—
Private housing blocks						
Self-contained	588	41 398	2 737	2 331	47 054	1.21
Non self-contained	—	7	14	—	21	1.67
Villas/Bungalows/Modern village houses	7	329	—	—	336	1.00
Simple stone structures	—	63	7	—	70	1.10
Institutions	1 442	70	—	—	1 512	1.00
Other permanent housing	182	1 764	21	—	1 967	1.01
Roof-top structures	7	651	28	7	693	1.06
Other private temporary housing	7	378	21	—	406	1.05
Total	2 233	44 982	2 849	2 338	52 402	1.20

COVERAGE: All occupied living quarters at the Census reference night.

Table 2 TYPE OF LIVING QUARTERS AND NUMBER OF OCCUPANTS

<i>Type of Living Quarters</i>	<i>Number of Occupants</i>				
	<i>1</i>	<i>2</i>	<i>3</i>	<i>4</i>	<i>5</i>
Housing Authority rental blocks					
Group A	—	—	—	—	—
Group B	—	—	—	—	—
Housing Authority cottages	70	63	56	63	49
Housing Authority temporary huts	—	—	—	—	—
Housing Society rental blocks	—	—	—	—	—
Housing Authority home ownership estates	—	—	—	—	—
Private housing blocks					
Self-contained	5 271	8 463	8 694	9 674	6 650
Non self-contained	—	7	—	—	7
Villas/Bungalows/Modern village houses	28	77	63	35	49
Simple stone structures	28	14	21	—	7
Institutions	1 288	91	14	49	21
Other permanent housing	315	392	329	385	350
Roof-top structures	196	196	119	77	84
Other private temporary housing	217	56	35	56	14
Total	7 413	9 359	9 331	10 339	7 231

COVERAGE: All occupied living quarters at the Census reference night.

<i>6</i>	<i>7</i>	<i>8</i>	<i>9</i>	<i>10 and over</i>	<i>Total</i>	<i>Total Number of Persons</i>
—	—	—	—	—	—	—
—	—	—	—	—	—	—
28	7	—	7	—	343	1 141
—	—	—	—	—	—	—
—	—	—	—	—	—	—
—	—	—	—	—	—	—
3 654	2 121	1 071	595	861	47 054	180 845
—	—	7	—	—	21	105
35	14	14	14	7	336	1 407
—	—	—	—	—	70	154
—	14	—	—	35	1 512	2 373
91	49	21	14	21	1 967	7 168
14	—	—	—	7	693	1 827
21	—	—	—	7	406	924
3 843	2 205	1 113	630	938	52 402	195 944

Table 3 ACCOMMODATION AND HOUSEHOLD SIZE

<i>Type of Living Quarters and Accommodation</i>	<i>Household Size</i>			
	<i>1</i>	<i>2</i>	<i>3</i>	<i>4</i>
Housing Authority rental blocks				
Group A	—	—	—	—
Group B	—	—	—	—
Housing Authority cottages	98	56	70	49
Housing Authority temporary huts	—	—	—	—
Housing Society rental blocks	—	—	—	—
Housing Authority home ownership estates	—	—	—	—
Private housing blocks				
Self-contained	11 977	11 683	9 954	10 045
Whole house/flat	4 865	7 938	7 952	8 750
Room/Cubicle	4 914	3 598	1 953	1 246
Bedspace/Cockloft, etc.	2 198	147	49	49
Non self-contained	14	7	7	—
Whole house/flat	—	—	—	—
Room/Cubicle	—	7	7	—
Bedspace/Cockloft, etc.	14	—	—	—
Villas/Bungalows/Modern village houses	28	77	63	35
Simple stone structures	35	21	14	—
Institutions	21	14	7	28
Other permanent housing	315	315	301	378
Roof-top structures	210	217	133	84
Other private temporary housing	245	42	42	56
Total	12 943	12 432	10 591	10 675

COVERAGE: All land-based domestic households.

<i>5</i>	<i>6</i>	<i>7</i>	<i>8</i>	<i>9</i>	<i>10 and over</i>	<i>Total</i>
—	—	—	—	—	—	—
—	—	—	—	—	—	—
49	28	7	—	7	—	364
—	—	—	—	—	—	—
—	—	—	—	—	—	—
—	—	—	—	—	—	—
6 629	3 024	1 596	714	280	245	56 147
5 873	2 772	1 463	658	273	238	40 782
735	238	133	56	7	7	12 887
21	14	—	—	—	—	2 478
—	—	—	7	—	—	35
—	—	—	7	—	—	7
—	—	—	—	—	—	14
—	—	—	—	—	—	14
49	35	14	14	7	7	329
7	—	—	—	—	—	77
—	—	—	—	—	—	70
357	91	35	14	—	—	1 806
63	21	—	—	—	—	728
14	14	—	—	—	7	420
7 168	3 213	1 652	749	294	259	59 976

Table 4 ACCOMMODATION AND HOUSEHOLD RENT

<i>Type of Living Quarters and Accommodation</i>	<i>Monthly Household Rent (HK\$)</i>					
	<i>Rent free</i>	<i>Under 100</i>	<i>100–199</i>	<i>200–299</i>	<i>300–399</i>	<i>400–599</i>
Housing Authority rental blocks						
Group A	—	—	—	—	—	—
Group B	—	—	—	—	—	—
Housing Authority cottages	301	42	7	—	7	7
Housing Authority temporary huts	—	—	—	—	—	—
Housing Society rental blocks	—	—	—	—	—	—
Private housing blocks						
Self-contained	29 309	476	1 127	1 330	910	2 583
Whole house/flat	27 335	7	35	49	49	259
Room/Cubicle	1 561	105	392	658	784	2 142
Bedspace/Cockloft, etc.	413	364	700	623	77	182
Non self-contained	—	14	—	7	—	7
Whole house/flat	—	—	—	—	—	—
Room/Cubicle	—	—	—	7	—	7
Bedspace/Cockloft, etc.	—	14	—	—	—	—
Villas/Bungalows/Modern village houses	266	—	—	—	—	7
Simple stone structures	77	—	—	—	—	—
Institutions	21	—	—	—	—	35
Other permanent housing	728	21	238	154	42	14
Roof-top structures	539	7	28	—	21	28
Other private temporary housing	413	—	—	—	—	—
Total	31 654	560	1 400	1 491	980	2 681

COVERAGE: All land-based domestic households.

<i>600– 799</i>	<i>800– 999</i>	<i>1 000– 1 499</i>	<i>1 500– 1 999</i>	<i>2 000– 2 499</i>	<i>2 500– 2 999</i>	<i>3 000– 3 999</i>	<i>4 000– 4 999</i>	<i>5 000 and over</i>	<i>Total</i>
—	—	—	—	—	—	—	—	—	—
—	—	—	—	—	—	—	—	—	—
—	—	—	—	—	—	—	—	—	364
—	—	—	—	—	—	—	—	—	—
—	—	—	—	—	—	—	—	—	—
2 877	2 345	5 488	2 716	1 729	1 477	1 407	714	1 659	56 147
434	595	3 234	2 156	1 484	1 379	1 393	714	1 659	40 782
2 408	1 694	2 233	553	245	98	14	—	—	12 887
35	56	21	7	—	—	—	—	—	2 478
7	—	—	—	—	—	—	—	—	35
7	—	—	—	—	—	—	—	—	7
—	—	—	—	—	—	—	—	—	14
—	—	—	—	—	—	—	—	—	14
—	—	—	—	7	—	—	—	49	329
—	—	—	—	—	—	—	—	—	77
14	—	—	—	—	—	—	—	—	70
21	126	112	175	56	42	63	7	7	1 806
21	21	35	21	7	—	—	—	—	728
—	—	—	7	—	—	—	—	—	420
2 940	2 492	5 635	2 919	1 799	1 519	1 470	721	1 715	59 976

Table 5 TYPE OF LIVING QUARTERS AND HOUSEHOLD INCOME

<i>Type of Living Quarters</i>	<i>Monthly Household Income (HK\$)</i>						
	<i>Under 1 000</i>	<i>1 000– 1 999</i>	<i>2 000– 2 999</i>	<i>3 000– 3 999</i>	<i>4 000– 4 999</i>	<i>5 000– 5 999</i>	<i>6 000– 6 999</i>
<i>Housing Authority rental blocks</i>							
Group A	—	—	—	—	—	—	—
Group B	—	—	—	—	—	—	—
Housing Authority cottages	42	21	21	49	35	56	28
Housing Authority temporary huts	—	—	—	—	—	—	—
Housing Society rental blocks	—	—	—	—	—	—	—
Housing Authority home ownership estates	—	—	—	—	—	—	—
<i>Private housing blocks</i>							
Self-contained	1 883	3 206	4 879	5 348	4 753	4 326	3 745
Non self-contained	7	14	—	7	—	—	7
Villas/Bungalows/Modern village houses	—	—	7	7	21	21	14
Simple stone structures	—	14	—	21	7	7	21
Institutions	—	7	—	—	—	7	7
Other permanent housing	7	56	98	238	147	196	140
Roof-top structures	70	119	119	105	112	35	35
Other private temporary housing	140	63	91	14	42	7	28
Total	2 149	3 500	5 215	5 789	5 117	4 655	4 025

COVERAGE: All land-based domestic households.

<i>7 000– 7 999</i>	<i>8 000– 8 999</i>	<i>9 000– 9 999</i>	<i>10 000– 11 999</i>	<i>12 000– 14 999</i>	<i>15 000– 19 999</i>	<i>20 000– 24 999</i>	<i>25 000– 29 999</i>	<i>30 000 and over</i>	<i>Total</i>
—	—	—	—	—	—	—	—	—	—
—	—	—	—	—	—	—	—	—	—
35	7	7	14	35	7	7	—	—	364
—	—	—	—	—	—	—	—	—	—
—	—	—	—	—	—	—	—	—	—
—	—	—	—	—	—	—	—	—	—
3 318	2 800	2 275	3 738	3 962	3 934	2 520	1 337	4 123	56 147
—	—	—	—	—	—	—	—	—	35
—	14	7	7	21	42	21	14	133	329
—	—	7	—	—	—	—	—	—	77
—	—	—	7	21	14	7	—	—	70
70	35	14	84	77	147	112	126	259	1 806
28	49	—	14	14	7	—	—	21	728
7	—	—	14	7	7	—	—	—	420
3 458	2 905	2 310	3 878	4 137	4 158	2 667	1 477	4 536	59 976

Table 6 USUAL HOUSEHOLD SIZE AND HOUSEHOLD COMPOSITION

<i>Household Composition</i>	<i>Usual Household Size</i>				
	<i>0</i>	<i>1</i>	<i>2</i>	<i>3</i>	<i>4</i>
One person	—	11 907	—	—	—
One unextended nuclear family	—	—	8 694	8 106	8 057
One vertically extended nuclear family	—	—	—	1 211	1 673
One horizontally extended nuclear family	—	—	—	301	399
Two or more nuclear families	—	—	—	—	483
Related persons forming no nuclear family	—	—	1 687	420	140
Unrelated persons	—	—	1 701	420	133
Households composed of non-usual household members only	798	—	—	—	—
Total	798	11 907	12 082	10 458	10 885

COVERAGE: All land-based domestic households.

<i>5</i>	<i>6</i>	<i>7</i>	<i>8</i>	<i>9</i>	<i>10 and over</i>	<i>Total</i>
—	—	—	—	—	—	11 907
4 410	1 225	546	203	42	28	31 311
1 694	1 092	462	189	56	—	6 377
287	126	98	21	7	14	1 253
924	861	588	329	196	245	3 626
42	7	7	—	—	—	2 303
98	28	14	7	—	—	2 401
—	—	—	—	—	—	798
7 455	3 339	1 715	749	301	287	59 976

Table 7 HOUSEHOLD SIZE AND NUMBER OF WORKING HOUSEHOLD MEMBERS

<i>Household Size</i>	<i>Number of Working Household Members</i>							<i>Total</i>
	<i>0</i>	<i>1</i>	<i>2</i>	<i>3</i>	<i>4</i>	<i>5</i>	<i>6 and over</i>	
1	4 088	8 855	—	—	—	—	—	12 943
2	2 044	4 886	5 502	—	—	—	—	12 432
3	672	4 004	4 662	1 253	—	—	—	10 591
4	378	3 836	3 864	2 002	595	—	—	10 675
5	196	1 834	2 282	1 848	798	210	—	7 168
6	14	525	854	833	637	273	77	3 213
7	14	231	301	448	336	224	98	1 652
8	7	77	133	126	203	133	70	749
9	14	21	21	63	70	56	49	294
10 and over	—	—	14	56	63	49	77	259
Total	7 427	24 269	17 633	6 629	2 702	945	371	59 976

COVERAGE: All land-based domestic households.

Table 8 AGE AND MARITAL STATUS

<i>Age Group</i>	<i>Sex</i>	<i>Marital Status</i>				<i>Total</i>
		<i>Never married</i>	<i>Married</i>	<i>Widowed</i>	<i>Divorced/ Separated</i>	
15-19	M	6 027	49	—	—	6 076
	F	5 978	105	—	7	6 090
20-24	M	6 643	525	—	14	7 182
	F	6 587	1 540	7	21	8 155
25-29	M	6 237	3 248	14	70	9 569
	F	5 271	5 523	56	105	10 955
30-34	M	3 171	5 943	—	126	9 240
	F	2 093	7 406	70	252	9 821
35-39	M	1 841	7 000	35	203	9 079
	F	1 302	7 217	217	217	8 953
40-44	M	686	4 452	49	161	5 348
	F	448	4 214	126	175	4 963
45-49	M	630	5 096	91	70	5 887
	F	413	4 354	252	161	5 180
50-54	M	567	5 796	133	154	6 650
	F	231	4 312	434	161	5 138
55-59	M	553	4 802	231	112	5 698
	F	413	3 563	1 064	84	5 124
60-64	M	343	3 808	308	77	4 536
	F	462	3 059	1 540	119	5 180
65 and over	M	343	6 685	1 295	98	8 421
	F	1 232	4 305	6 447	224	12 208
Total	M	27 041	47 404	2 156	1 085	77 686
	F	24 430	45 598	10 213	1 526	81 767
	T	51 471	93 002	12 369	2 611	159 453

COVERAGE: All land-based population aged 15 and over.

Table 9 AGE AND EDUCATIONAL ATTAINMENT

Age Group	Sex	Educational Attainment			
		No schooling/ Kindergarten	Primary	Lower secondary	Upper secondary
0- 4	M	5 572	—	—	—
	F	5 271	—	—	—
5- 9	M	1 386	4 830	—	—
	F	1 246	4 627	—	—
10-14	M	7	3 577	3 297	63
	F	14	3 549	2 989	63
15-19	M	14	154	1 484	3 080
	F	21	112	1 253	3 318
20-24	M	49	553	1 498	2 541
	F	35	490	861	3 514
25-29	M	112	1 127	1 701	3 297
	F	77	1 239	1 379	4 809
30-34	M	49	1 652	1 603	2 688
	F	133	1 484	1 498	3 766
35-39	M	77	1 456	1 638	2 814
	F	231	1 848	1 246	3 241
40-44	M	196	1 036	721	1 449
	F	287	1 155	637	1 414
45-49	M	182	1 589	777	1 218
	F	469	1 673	539	1 267
50-54	M	371	2 674	714	1 358
	F	1 120	1 813	560	889
55-59	M	637	2 471	665	931
	F	1 792	1 610	455	735
60-64	M	427	1 918	455	924
	F	1 841	1 911	448	651
65 and over	M	1 127	3 717	798	1 372
	F	6 909	3 395	581	735
Total	M	10 206	26 754	15 351	21 735
	F	19 446	24 906	12 446	24 402
	T	29 652	51 660	27 797	46 137
Sex ratio		525	1 074	1 233	891

COVERAGE: All land-based population.

<i>Matriculation</i>	<i>Craft courses in technical institute</i>	<i>Cert./Ord. Dip. courses in technical institute/polytechnic</i>	<i>Tertiary</i>		<i>Total</i>
			<i>Non- degree courses</i>	<i>Degree courses</i>	
—	—	—	—	—	5 572
—	—	—	—	—	5 271
—	—	—	—	—	6 216
—	—	—	—	—	5 873
—	—	—	—	—	6 944
—	—	—	—	—	6 615
945	98	168	91	42	6 076
917	21	273	154	21	6 090
903	49	385	616	588	7 182
973	42	567	931	742	8 155
700	28	371	700	1 533	9 569
1 029	14	413	616	1 379	10 955
637	7	259	462	1 883	9 240
896	7	231	490	1 316	9 821
658	7	189	357	1 883	9 079
693	—	182	567	945	8 953
364	—	84	217	1 281	5 348
434	—	70	413	553	4 963
315	7	105	259	1 435	5 887
308	—	63	308	553	5 180
210	7	49	266	1 001	6 650
105	7	14	231	399	5 138
161	—	42	56	735	5 698
133	7	14	98	280	5 124
161	—	7	63	581	4 536
98	7	—	63	161	5 180
308	7	42	126	924	8 421
196	—	—	147	245	12 208
5 362	210	1 701	3 213	11 886	96 418
5 782	105	1 827	4 018	6 594	99 526
11 144	315	3 528	7 231	18 480	195 944
927	2 000	931	800	1 803	969

Table 10 AGE AND SCHOOL ATTENDANCE

Age Group	Sex	Educational Level						Total
		Kinder- garten	Primary	Lower secondary	Upper secondary	Matri- culation	Tertiary	
Under 5	M	2 401	—	—	—	—	—	2 401
	F	2 324	—	—	—	—	—	2 324
5	M	1 022	147	—	—	—	—	1 169
	F	868	133	—	—	—	—	1 001
6	M	322	980	—	—	—	—	1 302
	F	308	1 022	—	—	—	—	1 330
7	M	21	1 148	—	—	—	—	1 169
	F	14	1 176	—	—	—	—	1 190
8	M	7	1 330	—	—	—	—	1 337
	F	14	1 204	—	—	—	—	1 218
9	M	—	1 225	—	—	—	—	1 225
	F	—	1 085	—	—	—	—	1 085
10	M	—	1 218	—	—	—	—	1 218
	F	—	1 239	—	—	—	—	1 239
11	M	—	1 407	35	—	—	—	1 442
	F	—	1 463	28	—	—	—	1 491
12	M	—	679	840	—	—	—	1 519
	F	—	609	658	—	—	—	1 267
13	M	—	196	1 253	—	—	—	1 449
	F	—	175	1 099	—	—	—	1 274
14	M	—	56	1 134	63	—	—	1 253
	F	—	35	1 183	63	—	—	1 281
15	M	—	35	539	497	14	—	1 085
	F	—	35	602	504	—	—	1 141
16	M	—	—	245	679	42	—	966
	F	—	7	217	861	14	—	1 099
17	M	—	14	70	623	210	7	924
	F	—	7	77	609	245	7	945
18	M	—	—	7	378	322	28	735
	F	—	7	28	301	413	14	763
19	M	—	—	7	140	371	84	602
	F	—	—	21	105	294	56	476
20	M	—	—	7	56	231	98	392
	F	—	—	—	49	168	154	371
21	M	—	—	—	14	70	112	196
	F	—	—	7	56	56	133	252
22	M	—	—	—	21	49	168	238
	F	—	—	—	21	14	98	133
23	M	—	—	—	—	21	126	147
	F	—	—	7	—	21	70	98
24	M	—	—	—	14	14	91	119
	F	—	—	—	7	—	21	28
25 and over	M	—	—	—	—	21	189	210
	F	—	—	—	14	28	70	112
Total	M	3 773	8 435	4 137	2 485	1 365	903	21 098
	F	3 528	8 197	3 927	2 590	1 253	623	20 118
	T	7 301	16 632	8 064	5 075	2 618	1 526	41 216
Sex ratio		1 069	1 029	1 053	959	1 089	1 449	1 049

COVERAGE: All land-based persons who were studying full-time in schools or educational institutions at the time of the Census.

Table 11 AGE AND ACTIVITY STATUS (ECONOMICALLY INACTIVE)

<i>Activity Status (Economically Inactive)</i>							
<i>Age Group</i>	<i>Sex</i>	<i>Home-makers</i>	<i>Students</i>	<i>Of independent means</i>	<i>Retired persons</i>	<i>Others</i>	<i>Total</i>
Under 15	M	7	15 526	—	—	3 199	18 732
	F	—	14 735	—	—	3 024	17 759
15–19	M	—	4 410	—	—	49	4 459
	F	49	4 459	—	—	28	4 536
20–24	M	14	1 169	7	—	63	1 253
	F	525	861	49	—	105	1 540
25–29	M	—	161	35	—	224	420
	F	2 149	126	42	—	224	2 541
30–34	M	7	7	28	—	217	259
	F	3 269	28	84	—	189	3 570
35–39	M	84	42	21	—	203	350
	F	3 346	7	56	—	140	3 549
40–44	M	21	—	63	—	84	168
	F	1 995	—	21	—	112	2 128
45–49	M	28	—	21	35	147	231
	F	2 184	—	77	63	133	2 457
50–54	M	35	—	42	189	168	434
	F	2 569	—	28	238	98	2 933
55–59	M	35	—	28	679	189	931
	F	2 401	—	84	525	189	3 199
60–64	M	—	—	14	1 442	168	1 624
	F	2 352	—	119	994	210	3 675
65 and over	M	84	—	56	4 690	455	5 285
	F	4 466	—	196	4 837	700	10 199
Total	M	315	21 315	315	7 035	5 166	34 146
	F	25 305	20 216	756	6 657	5 152	58 086
	T	25 620	41 531	1 071	13 692	10 318	92 232

COVERAGE: All land-based economically inactive population.

Table 12 AGE AND ACTIVITY STATUS (ECONOMICALLY ACTIVE)

<i>Activity Status (Working)</i>							
<i>Age Group</i>	<i>Sex</i>	<i>Self-employed (hawking)</i>	<i>Self-employed (others)</i>	<i>Employers</i>	<i>Out-workers</i>	<i>Employees, public sector</i>	<i>Employees, private sector</i>
15–19	M	—	35	—	—	28	1 204
	F	—	14	—	—	21	1 113
20–24	M	28	126	70	14	350	4 795
	F	—	63	21	14	301	5 663
25–29	M	70	378	399	7	805	7 070
	F	14	126	105	42	581	7 105
30–34	M	84	378	840	—	819	6 657
	F	28	189	259	35	567	4 823
35–39	M	112	476	1 127	63	882	5 817
	F	35	126	189	56	469	4 053
40–44	M	49	371	777	7	595	3 234
	F	49	91	147	28	294	2 023
45–49	M	77	441	833	35	560	3 542
	F	49	126	70	56	224	1 974
50–54	M	147	427	1 113	35	539	3 724
	F	98	98	84	28	266	1 442
55–59	M	154	357	826	42	280	2 863
	F	119	56	77	14	112	1 351
60–64	M	112	238	581	14	56	1 785
	F	42	56	63	—	21	1 183
65 and over	M	98	231	658	21	35	1 841
	F	126	84	63	28	21	1 568
Total	M	931	3 458	7 224	238	4 949	42 532
	F	560	1 029	1 078	301	2 877	32 298
	T	1 491	4 487	8 302	539	7 826	74 830

COVERAGE: All land-based economically active population.

Activity Status (Unemployed)

<i>Unpaid family workers</i>	<i>Student workers</i>	<i>Sub-total</i>	<i>Waiting to take up new work</i>	<i>Seeking work</i>	<i>Not seeking work because believed no work available/expected to return to work</i>	<i>Sub-total</i>	<i>Total</i>
42	168	1 477	21	112	7	140	1 617
35	259	1 442	—	98	14	112	1 554
49	154	5 586	63	273	7	343	5 929
105	175	6 342	70	175	28	273	6 615
42	49	8 820	56	259	14	329	9 149
98	35	8 106	42	252	14	308	8 414
28	—	8 806	7	147	21	175	8 981
147	7	6 055	42	140	14	196	6 251
35	—	8 512	49	168	—	217	8 729
273	7	5 208	42	119	35	196	5 404
7	—	5 040	56	84	—	140	5 180
133	—	2 765	7	56	7	70	2 835
21	—	5 509	21	126	—	147	5 656
133	—	2 632	7	84	—	91	2 723
28	—	6 013	28	147	28	203	6 216
154	—	2 170	—	28	7	35	2 205
35	—	4 557	42	133	35	210	4 767
133	—	1 862	—	42	21	63	1 925
21	—	2 807	21	70	14	105	2 912
56	—	1 421	—	49	35	84	1 505
98	—	2 982	7	98	49	154	3 136
63	—	1 953	—	28	28	56	2 009
406	371	60 109	371	1 617	175	2 163	62 272
1 330	483	39 956	210	1 071	203	1 484	41 440
1 736	854	100 065	581	2 688	378	3 647	103 712

Table 13 OCCUPATION AND INDUSTRY

<i>Occupation</i>	<i>Industry</i>				
	<i>Agriculture and fishing</i>	<i>Mining and quarrying</i>	<i>Manufacturing (textile and wearing apparel)</i>	<i>Manufacturing (others)</i>	<i>Electricity, gas and water</i>
Professional, technical and related workers	—	7	84	1 176	133
Administrative and managerial workers	14	21	392	1 827	49
Clerical and related workers	7	7	350	1 652	84
Sales workers	—	—	308	840	7
Service workers	—	—	112	665	14
Agricultural workers and fishermen	84	—	—	—	—
Production and related workers, transport equipment operators and labourers	—	21	2 912	7 665	175
Armed forces and unclassifiable	—	—	7	28	—
Total	105	56	4 165	13 853	462

COVERAGE: All land-based working persons including unemployed persons having had a previous job.

<i>Construction</i>	<i>Wholesale and retail trade, restaurants and hotels</i>	<i>Transport, storage and communication</i>	<i>Financing, insurance, real estate and business services</i>	<i>Services</i>	<i>Un-classifiable</i>	<i>Total</i>
882	658	392	2 093	8 743	35	14 203
651	2 436	805	3 087	721	14	10 017
567	5 005	1 883	6 069	3 409	56	19 089
70	13 195	168	1 127	378	49	16 142
336	9 324	511	1 050	11 529	196	23 737
—	—	—	7	63	—	154
3 045	1 351	2 800	308	1 491	56	19 824
—	28	21	21	140	14	259
5 551	31 997	6 580	13 762	26 474	420	103 425

Table 14 AGE AND INCOME FROM MAIN EMPLOYMENT

Monthly Income from Main Employment (HK\$)

<i>Age Group</i>	<i>Sex</i>	<i>Under 1 000</i>	<i>1 000– 1 499</i>	<i>1 500– 1 999</i>	<i>2 000– 2 499</i>	<i>2 500– 2 999</i>	<i>3 000– 3 499</i>	<i>3 500– 3 999</i>
15–19	M	217	259	441	343	105	42	14
	F	189	189	455	385	91	63	21
20–24	M	91	273	700	1 407	840	889	497
	F	154	203	1 365	1 778	1 015	714	259
25–29	M	63	105	343	1 001	1 071	1 456	903
	F	133	98	1 582	1 148	770	1 099	616
30–34	M	91	140	245	798	770	1 204	742
	F	140	231	1 092	693	406	581	182
35–39	M	98	140	182	539	588	1 057	546
	F	119	196	770	686	308	434	189
40–44	M	84	84	161	420	392	581	259
	F	84	133	518	413	189	154	63
45–49	M	84	140	245	462	364	721	371
	F	126	175	406	483	182	189	77
50–54	M	133	140	336	665	595	679	455
	F	77	189	308	399	224	126	49
55–59	M	182	189	399	791	434	546	203
	F	105	140	406	469	133	105	49
60–64	M	70	182	378	455	245	245	140
	F	182	203	420	259	105	77	28
65 and over	M	147	392	532	399	182	217	63
	F	168	476	553	392	140	42	21
Total	M	1 260	2 044	3 962	7 280	5 586	7 637	4 193
	F	1 477	2 233	7 875	7 105	3 563	3 584	1 554
	T	2 737	4 277	11 837	14 385	9 149	11 221	5 747

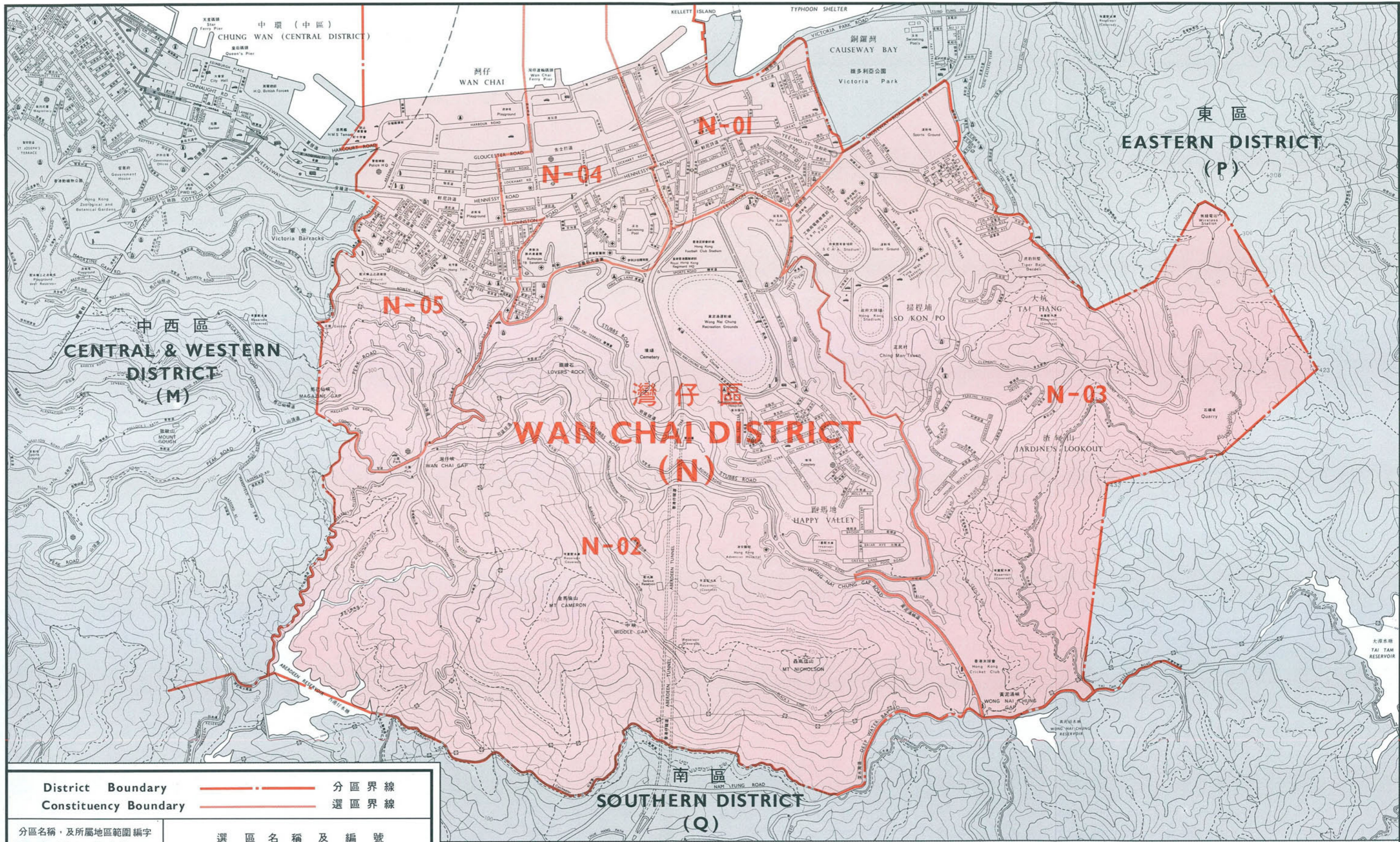
COVERAGE: All land-based working persons.

<i>4 000– 4 999</i>	<i>5 000– 5 999</i>	<i>6 000– 7 999</i>	<i>8 000– 9 999</i>	<i>10 000– 14 999</i>	<i>15 000– 19 999</i>	<i>20 000 and over</i>	<i>Unpaid family workers</i>	<i>Total</i>
14	—	—	—	—	—	—	42	1 477
7	7	—	—	—	—	—	35	1 442
448	196	105	42	28	7	14	49	5 586
315	252	126	42	7	—	7	105	6 342
1 218	777	784	343	385	126	203	42	8 820
889	581	623	217	168	28	56	98	8 106
987	770	889	378	784	357	623	28	8 806
518	448	567	329	385	182	154	147	6 055
1 001	672	973	497	728	441	1 015	35	8 512
434	294	497	343	385	112	168	273	5 208
455	287	504	301	525	259	721	7	5 040
161	140	161	294	154	63	105	133	2 765
441	343	483	266	504	308	756	21	5 509
112	126	154	203	154	42	70	133	2 632
609	504	483	231	434	203	518	28	6 013
91	105	91	154	91	49	63	154	2 170
385	287	266	147	273	105	315	35	4 557
35	63	35	70	56	14	49	133	1 862
217	154	77	77	231	35	280	21	2 807
14	14	21	7	14	—	21	56	1 421
91	196	182	84	161	28	210	98	2 982
28	21	14	—	7	14	14	63	1 953
5 866	4 186	4 746	2 366	4 053	1 869	4 655	406	60 109
2 604	2 051	2 289	1 659	1 421	504	707	1 330	39 956
8 470	6 237	7 035	4 025	5 474	2 373	5 362	1 736	100 065

Table 15 AGE AND POPULATION MOVEMENT

<i>Age Group</i>	<i>Sex</i>	<i>Place of Residence 5 Years Ago</i>				<i>Total</i>
		<i>In same District</i>	<i>In different District</i>	<i>Marine</i>	<i>Outside Hong Kong</i>	
5- 9	M	4 676	896	—	644	6 216
	F	4 361	1 078	—	434	5 873
10-14	M	5 677	889	—	378	6 944
	F	5 152	938	—	525	6 615
15-19	M	5 201	588	—	287	6 076
	F	4 886	896	—	308	6 090
20-24	M	5 369	1 204	14	595	7 182
	F	5 229	1 827	7	1 092	8 155
25-29	M	6 524	1 771	21	1 253	9 569
	F	6 006	2 660	—	2 289	10 955
30-34	M	5 985	2 044	7	1 204	9 240
	F	5 999	2 093	—	1 729	9 821
35-39	M	6 664	1 533	—	882	9 079
	F	6 321	1 344	—	1 288	8 953
40-44	M	3 976	791	—	581	5 348
	F	3 675	658	—	630	4 963
45-49	M	4 529	756	—	602	5 887
	F	4 053	567	—	560	5 180
50-54	M	5 502	826	7	315	6 650
	F	4 361	455	—	322	5 138
55-59	M	4 858	539	14	287	5 698
	F	4 396	497	—	231	5 124
60-64	M	3 948	448	—	140	4 536
	F	4 347	609	—	224	5 180
65 and over	M	7 420	756	7	238	8 421
	F	10 689	1 148	—	371	12 208
Total	M	70 329	13 041	70	7 406	90 846
	F	69 475	14 770	7	10 003	94 255
	T	139 804	27 811	77	17 409	185 101

COVERAGE: All land-based population aged 5 and over.



District Boundary ———— 分區界線
 Constituency Boundary ———— 選區界線

分區名稱、及所屬地區範圍編字 District Name, Code Letter & Land Area Covered	選區名稱及編號 Name of Constituency & Code Number
灣仔區 Wan Chai District (N)	Causeway Bay Central 01 銅鑼灣中
	Happy Valley 02 跑馬地
	Tai Hang & So Kon Po 03 大坑及掃桿埔
	Wan Chai East 04 灣仔東
	Wan Chai West 05 灣仔西

區議會選區分界圖 - 灣仔區
 DISTRICT BOARD ELECTORAL BOUNDARIES - WAN CHAI DISTRICT

SCALE 1:15 000 比例尺

SERIES & SHEET No. 組別及編號
 EBM/H/WC/A
 EDITION 2 - 1984 第二版
 Survey Division, Lands Department 地政署測量部
 © Hong Kong Government 香港政府版權

