



HONG KONG 1986 BY-CENSUS

**District Board District Tabulations
Sham Shui Po**

Census and Statistics Department
Hong Kong



這份刊物的 PDF 版本的文字是從印刷版掃描而成，再利用光學字符識別軟件轉換成電子格式。由於原印刷版本已印製並保存多年，光學字符識別技術未必能準確地識別某些文字或數字。因此，搜索或複製此 PDF 檔案內的文字時應加以注意。

The text of this PDF publication was scanned from its printed version and then converted to electronic text using Optical Character Recognition (OCR) software. Because of the age and condition of the original printed copy, the OCR may not recognise certain characters or figures accurately. Caution should therefore be taken when searching or copying text from this PDF publication.

HONG KONG 1986 BY-CENSUS

**District Board District Tabulations
Sham Shui Po**

**Census and Statistics Department
Hong Kong**

Contents

	Page
Foreword	v
Explanatory Notes	vii
District Tables	
1. Type of Living Quarters and Number of Domestic Households	1
2. Type of Living Quarters and Number of Occupants	2
3. Accommodation and Household Size	4
4. Accommodation and Household Rent	6
5. Type of Living Quarters and Household Income	8
6. Usual Household Size and Household Composition	10
7. Household Size and Number of Working Household Members	12
8. Age and Marital Status	13
9. Age and Educational Attainment	14
10. Age and School Attendance	16
11. Age and Activity Status (Economically Inactive)	17
12. Age and Activity Status (Economically Active)	18
13. Occupation and Industry	20
14. Age and Income from Main Employment	22
15. Age and Population Movement	24
Map	

Foreword

This report presents the final results of the 1986 By-census conducted in March 1986. It contains basic cross-tabulations covering the broad range of demographic, social and economic characteristics of the population in Sham Shui Po.

Figures in this report refer to the land-based population of Hong Kong on 11 March 1986, excluding transients, Vietnamese refugees and residents who were temporarily away from Hong Kong on the census reference night. Due to lack of a complete frame of vessels, the sampling method employed in the By-census does not enable a separate estimate of the marine population to be made for each district. On the other hand, an adjustment has been made to the enumerated population in each district to allow for persons in non-contact households. A map showing the district boundaries of Sham Shui Po is attached to the report.

The 1986 By-census was based on a one-in-seven sample of the population. Estimates obtained from the By-census are subject to sampling error; and this is approximately in inverse proportion to the sample size. Therefore, figures for small districts have large sampling errors and should be used with caution.

Detailed analysis and interpretation of the By-census results will be presented in the Main Report to be published in late 1987.

April 1987

R. Butler
Commissioner for Census & Statistics

Explanatory Notes

Introduction

This report contains basic cross-tabulations covering the following items of information on the population in each district:

LIVING QUARTERS

- Type of living quarters
- Number of domestic households in living quarters
- Number of occupants in living quarters

HOUSEHOLDS

- Accommodation
- Household size
- Household rent
- Household income
- Usual household size
- Household composition
- Working household members

PERSONS

- Age and sex
- Marital status
- Educational attainment
- School attendance
- Activity status
- Occupation
- Industry
- Income from main employment
- Population movement

The 1986 By-census was based on a one-in-seven sample of the population of Hong Kong. Information on detailed social, economic and demographic characteristics was collected from all persons in the households in the sampled living quarters. Estimates were derived from the information collected from these households/persons.

Definition of Terms

District Board district—The geographic area delineated by the City and New Territories Administration for district administration purposes. There are totally 19 District Board districts; four on Hong Kong Island; six in Kowloon and New Kowloon and nine in the New Territories.

Living Quarters—This includes:

- (a) quarters built for residential purposes irrespective of whether there is anybody living there; and
- (b) quarters built for non-residential purposes which normally has one or more persons living there or was occupied on the census reference night.

Structurally, a living quarters must be internally connected so that the occupants could move between the rooms/cubicles without going outside onto a public corridor, landing or staircase. It must also have a direct external access to a street, public corridor, landing or staircase without going through another quarters. In this report, all figures on living quarters refer to quarters where occupants were present on the census reference night.

Domestic Household—This comprises a group of persons, related family members with/without unrelated persons or unrelated persons only, who live together in the same living quarters and share the food of the household. The expenditure of the household is borne by one or more household members. This also includes any person who lives alone and is responsible for his/her own meals.

Type of Living Quarters—A living quarters is classified by the type of building in which the living quarters is located.

A building is classified in accordance with the following scheme:

- (a) by the purpose for which the building is built;
- (b) by the type of materials used; and
- (c) by the sector responsible for its construction/management.

Self-contained Quarters—A living quarters with internal piped water supply and a flush toilet system.

Housing Authority Rental Blocks (Group A)—These are Government Low Cost Housing Blocks and other buildings under the management of the Hong Kong Housing Authority. Units in these blocks are self-contained. Converted Mark I to Mark III blocks are also grouped in this category.

Housing Authority Rental Blocks (Group B)—These are buildings formerly managed by the Resettlement Department but have been put under the management of the Hong Kong Housing Authority since 1973. They can be divided into Mark I to Mark VI estates. Units in Mark I to Mark III are non self-contained.

Housing Authority Home Ownership Estates—These are self-contained living quarters built and managed by the Hong Kong Housing Authority under the Home Ownership Scheme, the Private Sector Participation Scheme and the Middle-income Housing Scheme.

Private Housing Blocks (Self-contained)—These include self-contained living quarters in apartments and other multi-storey blocks owned by the private sector for residential purposes. Living quarters in Housing Society Urban Improvement Scheme estates are also included in this category.

Villas/Bungalows—These include self-contained living quarters in modern houses of one to three storeys. The design of the houses is more deluxe.

Modern Village Houses—These include self-contained living quarters in relatively modern design village houses of two to three storeys. The roofs of these houses are often laid horizontally.

Simple Stone Structures—These include non self-contained living quarters in one to two storeys houses built of stone and/or other permanent or semi-permanent materials. Units in traditional village houses are also grouped in this category.

Institutions—These include units in hospitals, old people's homes, religious houses, maternity homes, prison cells and Army Barracks etc.

Other Permanent Housing—These include units in hotels, boarding houses and other similar residential institutions. Living quarters in commercial, manufacturing and other non-domestic buildings are also grouped in this category.

Roof-top Structures—These are structures built of temporary or semi-permanent materials on the roofs of permanent buildings.

Other Private Temporary Housing—These are structures built of temporary materials (other than roof-top structures) including contractor's matsheds, nissen huts, other private temporary huts and places not intended for residential purposes (e.g. landings, staircases, corridors etc.) but were occupied on the census reference night.

Number of Domestic Households in Living Quarters—This refers to the number of domestic households found to be in a living quarters on the census reference night. Hence, the number of domestic households in a living quarters will be zero if it contains collective households only.

Number of Occupants in Living Quarters—This refers to the number of persons found to be in a living quarters on the census reference night.

Accommodation—This refers to the living space occupied by the household on the census reference night.

Whole house/flat—This refers to a whole flat/floor/house occupied by one household.

Room/Cubicle—This refers to the part of a living quarters enclosed by fixed partitions occupied by one household.

Bedspace/Cockloft, etc.—These include bedspace, cockloft (i.e. a raised platform or a kind of a gallery inside a shop or a house usually intended for storage but actually used for living purposes), accommodation outside a living quarters (e.g. staircases, street-sides) and premises not intended for living (e.g. shops, workshops, storerooms and schools) but were occupied on the census reference night.

Household Size—This refers to the number of persons found to be in the household on the census reference night.

Household Rent—The amount paid for the month of March 1986 by a household for occupying the accommodation, after deducting any housing allowance/subsidies received.

Household Income—This refers to the total income (including earnings in cash from employment and other cash incomes for February 1986) of all persons who were found to be in the household on the census reference night.

Usual Household Size—This refers to the number of persons who spent most of the nights in the household during the three months before enumeration in the By-census. Hence, the usual household size will be zero if all persons found on the census reference night did not spend most of the nights there during the three months before the enumeration.

Household Composition—Household composition is derived from the 'relationship to the head of household' of each usual household member enumerated in a domestic household. It shows the structure of a household in terms of (a) the number of family nuclei and (b) the relationship between the family nucleus and other related household members.

Family nucleus—This consists of one of the following combinations:

- (a) a married couple without children,
- (b) a married couple with one or more never married children, or
- (c) one parent (either father or mother) with one or more never married children.

One unextended nuclear family—A household comprising one family nucleus without other related persons.

One vertically extended nuclear family—A household comprising one family nucleus with one or more related persons not of the same generation. It may or may not include other related persons of the same generation.

One horizontally extended nuclear family—A household comprising one family nucleus with one or more related persons of the same generation but without any other related persons of a different generation.

Two or more nuclear families—A household comprising two or more family nuclei whose members may or may not be related in anyway.

Working Household Members—This refers to members of the household who performed some work for a wage/salary during the seven days before enumeration in the By-census.

Age—The number of complete years a person has passed since birth.

Marital Status—The status of a person in relation to marriage. The marital status of a person was recorded according to the actual situation as reported by the respondent in the By-census. There was no check on whether the marriage/divorce had undergone any kind of legal registration or whether any kind of ceremony had ever been taken place.

Educational Attainment—This refers to the highest level of education ever attained by a person in school or other educational institution, regardless of whether he/she had passed the course. Only formal courses, as defined below, are counted as educational attainment:

- (i) it lasts at least one academic year's duration;
- (ii) it requires specific academic entrance qualifications; and
- (iii) it includes an examination for assessment purposes.

Primary—Including Primary 1–6 in all schools.

Lower secondary—Including Middle 1–3 in Chinese schools or Form 1–3 in English or Anglo-Chinese schools.

Upper secondary—Including Middle 4–5 in Chinese schools or Form 4–5 in English or Anglo-Chinese schools.

Matriculation—Including Middle 6 in Chinese schools or Form 6–7 in English or Anglo-Chinese schools.

Craft courses in Technical Institute—Including Craft/Apprenticeship courses in Technical Institutes.

Certificate/Ordinary Diploma courses in Technical Institute/Polytechnic—Including Diploma/Certificate courses in commercial schools, Ordinary Diploma or Ordinary/Higher Certificate courses in Polytechnics or Technical Institutes, but excluding Endorsement Certificate/Associateship/Professional Diploma courses.

Tertiary education (Non-degree courses)—Including all Higher Diploma/Endorsement, Associateship and other non-degree courses in Polytechnics and other Post-secondary Colleges. Diploma/Certificate courses in Colleges of Education and the Technical Teacher's Colleges, and nurse training courses are also grouped in this category.

Tertiary education (Degree courses)—Including all first degree courses and post-graduate courses of universities in Hong Kong and overseas.

Main Employment (or Activity) Status—This refers to the status of a person in relation to economic activity in society. The population may be broadly divided into two main groups: (A) economically inactive population and (B) economically active population (the labour force) as follows:

(A) Economically inactive population—This refers to persons who did not have a job and were not at work during the seven days before enumeration in the By-census, excluding persons who were on leave during the reference period and persons who were unemployed. Included in this category are home-makers, students, persons of independent means, retired persons and other economically inactive.

Home-maker—A person who looks after the home without pay.

Student—A person who is studying full-time in school or other educational institution (student workers are classified as economically active persons and are not included in this group. Persons who are self-studying, or studying informal courses in miscellaneous training institutes or studying evening courses and were not working during the seven days before the enumeration of the By-census are also included in this category).

Of independent means—Persons who do not have to work for a living. They live by either renting or subletting a house or flat (or part of a house/flat), or on capital accumulated in previous years, or on income from investments or on remittances from overseas.

Retired person—A person who has worked previously but is not currently working because of old age.

Other economically inactive—Economically inactive persons not elsewhere classified, e.g. persons who cannot work or do not seek work because of sickness or disablement and unpaid religious workers.

(B) Economically active population (the labour force)—This comprises the employed (working population) and the unemployed.

The employed—This refers to persons aged 15 and above who performed some work for a wage/salary or were on leave/holiday during the seven days before enumeration in the By-census. Included in this category are:

Self-employed—A person who works on his/her own account, neither employed by someone else nor employing others.

Employer—A person who works on his/her own account and employs one or more persons to work for him/her.

Outworker—An employee who is free to take his/her work home or anywhere he/she likes.

Employee (Public Sector)—A person who works for a wage/salary in local government or overseas government. Employees of government subsidised organisations, such as Trade Development Council, Productivity Centre, Universities, Polytechnics, ICAC are excluded from this category.

Employee (Private Sector)—A person who works for a wage/salary in private/government subsidised organisations. Including in this category are domestic helpers working for wages.

Unpaid family worker—A person who lives with his/her family and does work (not domestic work) as part of the family enterprise in return for food and lodging.

Student worker—A full-time student who performed some work for a wage/salary during the seven days before enumeration in the By-census.

The unemployed—This refers to persons aged 15 and above and not of independent means who were not at work during the seven days before enumeration in the By-census but were seeking work and available for work. This excludes those who were on leave/holiday during the reference period but includes:

- (a) job-seekers who were not available for work because of temporary sickness/injury; and
- (b) those who were available for work but not seeking work because they
 - (i) were waiting to take up a new job;
 - (ii) expected to be called back to work; and
 - (iii) believed suitable work was not available.

Occupation—This refers to the kind of work a person performed during the seven days before enumeration in the By-census. The classification used follows the major groups of the International Standard Classification of Occupation. Unemployed persons having had a previous job are classified by their last occupation.

Professional, technical and related workers—Including qualified professional scientists, doctors, dentists; architects, engineers, surveyors; marine and aviation officers and engineers; university academic staff; qualified teachers; economists, statisticians, mathematicians, system analysts, computer programmers; lawyers, accountants; members of religious orders; writers; artists, sportsmen, librarians, social workers; qualified nurses and mid-wives and other para-medical workers; other technicians.

Administrative and managerial workers—Including administrative officers in government service; consular staff; directors, managers and working proprietors in industry, commerce, transport and services sectors, but excluding those in wholesale and retail trade, import and export trade and in catering and lodging services, and farm managers.

Clerical and related workers—Including executive officers in government service; stenographers and typists; punching and computing machine operators; bookkeepers and clerks of any kind; transport conductors, postmen, telephone operators, ship's radio officers, flight radio operators.

Sales workers—Including managers and working proprietors in wholesale and retail trade, import and export trade; sales supervisors, salesmen, shop assistants, hawkers.

Service workers—Including managers and working proprietors in catering and lodging services, hotel and domestic staff, building caretakers, laundry workers, barbers and hairdressers, staff of the police and other disciplined services, tourist guides, other service workers.

Agricultural, animal husbandry and forestry workers and fishermen—Including master farmers, farm hands, gardeners in parks; master fishermen, fish farmers, oyster culturists.

Production and related workers, transport equipment operators and labourers—Including foremen and supervisors in manufacturing and construction industries; miners and quarrymen; wood, metal and chemical processors; food and beverage processors, tobacco workers; textile workers; tailors, other clothing workers; shoemakers, other leather workers; blacksmiths, tool-makers, fitters, machinists; radio and electrical workers; printing and painting workers; musical instrument makers, other production workers; brick-layers, carpenters, other construction workers; stationary engine operators; hand packers, dockers, loaders; riggers, crane operators; seamen, drivers, light-house operators.

Armed forces and unclassifiable—Including members of the armed services of Britain and other countries; persons in occupations inadequately described or unclassifiable.

Industry—This refers to the main kind of goods or services produced by the establishment in which a person worked during the seven days before enumeration in the By-census. The classification used follows the major divisions of the International Standard Industrial Classification. Unemployed persons having had a previous job are classified by their last industry.

Agriculture and fishing—Including growing of rice, vegetables, flowers, fruits; keeping of pigs and poultry; beam trawling, single-boat stern trawling, pair trawling, long lining, hand lining, purse seining, gill netting; oyster and pond fish culture.

Mining and quarrying—Including metal ore mining and processing, stone quarrying.

Manufacturing (textile and wearing apparel)—Including spinning of cotton and yarn, weaving and knitting of cotton and other fabrics; bleaching, dyeing, finishing; manufacturing of wearing apparel, knitwear and other made-up textile goods; manufacturing of carpets, cordages, ropes and twines.

Manufacturing (others)—Including manufacturing of food, beverage, tobacco, footwear, leather products, rubber products, plastic products, wood products, printed matters and paper products, metal products, machinery, chemicals, chemical products, glass, pottery.

Electricity, gas and water—Including electric light and power, town gas, water supply.

Construction—Including building construction, civil engineering, plumbing, electrical wiring, air-conditioning installation and repair.

Wholesale and retail trade, restaurants and hotels—Including wholesale and retail trade, import and export trade, hawkers, peddlers, Chinese general brokers, other commercial agents; restaurants, cafes, hotels, rooming houses.

Transport, storage and communication—Including land transport, water transport, air transport, services allied to transport, storage and warehousing, posts, telecommunications.

Financing, insurance, real estate and business services—Including finance, insurance, real estate; offices of lawyers, accountants, auditors, architects, surveyors, advertising agents; data processing services; chambers of commerce and trade unions.

Services—Including government services, the armed forces; education services, medical, dental and other health services, sanitary services; welfare institutions, religious organisations; cinemas, theatres, radio and television broadcasting, libraries, museums; electrical repair shops, automobile repair garages; other household and personal services.

Unclassifiable—Including persons in industries inadequately described or unclassifiable.

Income from Main Employment—For employers or self-employed persons, this is the amount earned excluding expenses incurred in running their main business; for employees, this is the total amount earned from their main employment including salary or wages, bonus, commission, overtime, tips and other cash allowances. Housing allowance and New Year bonus/double pay are excluded. The amount recorded refers to the calendar month before the By-census.

Table 1 TYPE OF LIVING QUARTERS AND NUMBER OF DOMESTIC HOUSEHOLDS

<i>Type of Living Quarters</i>	<i>Number of Domestic Households in Living Quarters</i>					<i>Average Degree of Sharing</i>
	<i>0</i>	<i>1</i>	<i>2</i>	<i>3 and over</i>	<i>Total</i>	
Housing Authority rental blocks						
Group A	35	37 765	630	133	38 563	1.02
Group B	7	2 982	49	—	3 038	1.02
Housing Authority cottages	—	168	—	7	175	1.12
Housing Authority temporary huts	—	1 505	35	—	1 540	1.02
Housing Society rental blocks	—	217	—	—	217	1.00
Housing Authority home ownership estates	—	1 554	—	—	1 554	1.00
Private housing blocks						
Self-contained	217	41 244	2 912	5 404	49 777	1.43
Non self-contained	—	35	7	35	77	2.18
Villas/Bungalows/Modern village houses	—	399	—	—	399	1.00
Simple stone structures	—	77	—	—	77	1.00
Institutions	2 499	70	—	—	2 569	1.00
Other permanent housing	189	1 953	84	35	2 261	1.08
Roof-top structures	7	1 197	91	91	1 386	1.35
Other private temporary housing	7	1 057	35	28	1 127	1.11
Total	2 961	90 223	3 843	5 733	102 760	1.23

COVERAGE: All occupied living quarters at the Census reference night.

Table 2 TYPE OF LIVING QUARTERS AND NUMBER OF OCCUPANTS

<i>Type of Living Quarters</i>	<i>Number of Occupants</i>				
	<i>1</i>	<i>2</i>	<i>3</i>	<i>4</i>	<i>5</i>
Housing Authority rental blocks					
Group A	2 128	5 138	6 783	8 113	7 287
Group B	497	686	714	441	308
Housing Authority cottages	21	—	35	63	49
Housing Authority temporary huts	273	364	231	357	189
Housing Society rental blocks	7	70	35	56	28
Housing Authority home ownership estates	35	140	252	427	371
Private housing blocks					
Self-contained	4 116	7 196	8 841	9 884	7 455
Non self-contained	21	—	7	28	—
Villas/Bungalows/Modern village houses	49	42	42	63	21
Simple stone structures	14	7	14	—	14
Institutions	2 436	63	7	21	14
Other permanent housing	595	448	378	483	231
Roof-top structures	238	259	280	259	147
Other private temporary housing	434	203	140	140	105
Total	10 864	14 616	17 759	20 335	16 219

COVERAGE: All occupied living quarters at the Census reference night.

<i>6</i>	<i>7</i>	<i>8</i>	<i>9</i>	<i>10 and over</i>	<i>Total</i>	<i>Total Number of Persons</i>
4 676	2 611	1 099	441	287	38 563	163 758
217	105	49	14	7	3 038	9 954
—	7	—	—	—	175	672
91	21	—	7	7	1 540	4 893
21	—	—	—	—	217	742
189	91	21	28	—	1 554	6 825
4 851	2 842	1 456	1 071	2 065	49 777	216 853
14	7	—	—	—	77	287
63	56	28	21	14	399	1 967
14	14	—	—	—	77	322
—	7	—	—	21	2 569	3 388
84	21	14	7	—	2 261	6 538
56	35	28	14	70	1 386	5 229
56	7	7	7	28	1 127	3 241
10 332	5 824	2 702	1 610	2 499	102 760	424 669

Table 3 ACCOMMODATION AND HOUSEHOLD SIZE

<i>Type of Living Quarters and Accommodation</i>	<i>Household Size</i>			
	<i>1</i>	<i>2</i>	<i>3</i>	<i>4</i>
Housing Authority rental blocks				
Group A	3 682	4 620	6 650	8 099
Group B	560	693	700	427
Housing Authority cottages	49	—	35	56
Housing Authority temporary huts	329	343	231	357
Housing Society rental blocks	7	70	35	56
Housing Authority home ownership estates	35	140	252	427
Private housing blocks				
Self-contained	18 459	14 315	12 012	11 011
Whole house/flat	3 416	6 706	8 057	8 708
Room/Cubicle	11 893	7 378	3 906	2 282
Bedspace/Cockloft, etc.	3 150	231	49	21
Non self-contained	91	42	28	7
Whole house/flat	21	—	7	7
Room/Cubicle	70	42	21	—
Bedspace/Cockloft, etc.	—	—	—	—
Villas/Bungalows/Modern village houses	49	42	42	63
Simple stone structures	14	7	14	—
Institutions	35	7	7	14
Other permanent housing	819	322	350	455
Roof-top structures	567	434	336	287
Other private temporary housing	518	203	168	154
Total	25 214	21 238	20 860	21 413

COVERAGE: All land-based domestic households.

<i>5</i>	<i>6</i>	<i>7</i>	<i>8</i>	<i>9</i>	<i>10 and over</i>	<i>Total</i>
7 273	4 669	2 618	1 092	441	280	39 424
308	217	105	49	14	7	3 080
49	—	7	—	—	—	196
196	91	14	—	7	7	1 575
28	21	—	—	—	—	217
371	189	91	21	28	—	1 554
7 441	4 004	2 023	749	406	336	70 756
6 356	3 703	1 827	665	378	322	40 138
1 029	294	189	84	28	14	27 097
56	7	7	—	—	—	3 521
—	—	—	—	—	—	168
—	—	—	—	—	—	35
—	—	—	—	—	—	133
—	—	—	—	—	—	—
21	63	56	28	21	14	399
14	14	14	—	—	—	77
7	—	—	—	—	—	70
203	77	14	7	—	—	2 247
119	42	35	21	—	21	1 862
119	56	14	—	7	7	1 246
16 149	9 443	4 991	1 967	924	672	122 871

Table 4 ACCOMMODATION AND HOUSEHOLD RENT

<i>Type of Living Quarters and Accommodation</i>	<i>Monthly Household Rent (HK\$)</i>					
	<i>Rent free</i>	<i>Under 100</i>	<i>100–199</i>	<i>200–299</i>	<i>300–399</i>	<i>400–599</i>
Housing Authority rental blocks						
Group A	63	1 134	6 671	5 684	13 153	11 242
Group B	35	931	1 687	350	70	7
Housing Authority cottages	14	182	—	—	—	—
Housing Authority temporary huts	14	1 225	336	—	—	—
Housing Society rental blocks	—	—	—	98	119	—
Private housing blocks						
Self-contained	37 436	777	2 107	3 038	4 018	7 098
Whole house/flat	33 026	7	63	378	903	483
Room/Cubicle	3 605	231	1 029	1 953	2 856	6 524
Bedspace/Cockloft, etc.	805	539	1 015	707	259	91
Non self-contained	14	—	56	21	7	35
Whole house/flat	14	—	—	—	—	7
Room/Cubicle	—	—	56	21	7	28
Bedspace/Cockloft, etc.	—	—	—	—	—	—
Villas/Bungalows/Modern village houses	322	—	—	—	—	—
Simple stone structures	35	28	7	—	—	7
Institutions	7	—	—	—	—	—
Other permanent housing	735	84	742	301	91	49
Roof-top structures	1 036	168	35	42	91	196
Other private temporary housing	1 204	—	7	—	—	14
Total	40 915	4 529	11 648	9 534	17 549	18 648

COVERAGE: All land-based domestic households.

<i>600– 799</i>	<i>800– 999</i>	<i>1 000– 1 499</i>	<i>1 500– 1 999</i>	<i>2 000– 2 499</i>	<i>2 500– 2 999</i>	<i>3 000– 3 999</i>	<i>4 000– 4 999</i>	<i>5 000 and over</i>	<i>Total</i>
1 260	210	7	—	—	—	—	—	—	39 424
—	—	—	—	—	—	—	—	—	3 080
—	—	—	—	—	—	—	—	—	196
—	—	—	—	—	—	—	—	—	1 575
—	—	—	—	—	—	—	—	—	217
5 754	3 339	3 605	1 778	1 246	665	840	287	322	72 310
525	511	1 442	1 253	1 092	602	798	287	322	41 692
5 201	2 793	2 121	525	154	63	42	—	—	27 097
28	35	42	—	—	—	—	—	—	3 521
35	—	—	—	—	—	—	—	—	168
14	—	—	—	—	—	—	—	—	35
21	—	—	—	—	—	—	—	—	133
—	—	—	—	—	—	—	—	—	—
—	—	35	7	—	14	—	—	21	399
—	—	—	—	—	—	—	—	—	77
21	14	7	14	7	—	—	—	—	70
49	63	63	49	21	—	—	—	—	2 247
133	49	84	21	7	—	—	—	—	1 862
—	—	14	—	7	—	—	—	—	1 246
7 252	3 675	3 815	1 869	1 288	679	840	287	343	122 871

Table 5 TYPE OF LIVING QUARTERS AND HOUSEHOLD INCOME

<i>Type of Living Quarters</i>	<i>Monthly Household Income (HK\$)</i>						
	<i>Under 1 000</i>	<i>1 000– 1 999</i>	<i>2 000– 2 999</i>	<i>3 000– 3 999</i>	<i>4 000– 4 999</i>	<i>5 000– 5 999</i>	<i>6 000– 6 999</i>
<i>Housing Authority rental blocks</i>							
Group A	1 246	2 247	4 417	6 440	5 264	4 662	3 500
Group B	238	308	616	553	371	308	238
Housing Authority cottages	7	7	21	28	35	42	14
Housing Authority temporary huts	119	259	371	322	168	147	112
Housing Society rental blocks	—	14	35	63	35	7	35
Housing Authority home ownership estates	—	35	42	63	98	175	182
<i>Private housing blocks</i>							
Self-contained	3 374	5 901	9 814	9 912	7 861	6 349	4 606
Non self-contained	28	14	49	14	14	21	7
Villas/Bungalows/Modern village houses	—	7	21	35	—	14	14
Simple stone structures	—	7	—	21	14	14	—
Institutions	—	—	7	14	—	—	—
Other permanent housing	35	322	427	119	147	357	126
Roof-top structures	210	147	273	371	301	175	119
Other private temporary housing	140	238	252	231	133	49	63
Total	5 397	9 506	16 345	18 186	14 441	12 320	9 016

COVERAGE: All land-based domestic households.

<i>7 000– 7 999</i>	<i>8 000– 8 999</i>	<i>9 000– 9 999</i>	<i>10 000– 11 999</i>	<i>12 000– 14 999</i>	<i>15 000– 19 999</i>	<i>20 000– 24 999</i>	<i>25 000– 29 999</i>	<i>30 000 and over</i>	<i>Total</i>
2 786	2 163	1 806	2 499	1 470	742	112	35	35	39 424
119	91	63	112	49	14	—	—	—	3 080
14	14	—	7	7	—	—	—	—	196
21	28	14	—	7	—	—	—	7	1 575
7	7	7	—	—	7	—	—	—	217
154	112	98	168	154	168	91	7	7	1 554
3 766	3 129	2 261	3 864	3 423	3 108	1 603	805	980	70 756
7	7	—	—	—	—	—	7	—	168
—	—	—	42	42	56	42	21	105	399
7	—	7	7	—	—	—	—	—	77
—	7	—	14	21	—	7	—	—	70
133	112	98	112	112	35	56	42	14	2 247
70	70	21	56	7	14	14	7	7	1 862
21	28	28	28	21	7	—	—	7	1 246
7 105	5 768	4 403	6 909	5 313	4 151	1 925	924	1 162	122 871

Table 6 USUAL HOUSEHOLD SIZE AND HOUSEHOLD COMPOSITION

<i>Household Composition</i>	<i>Usual Household Size</i>				
	<i>0</i>	<i>1</i>	<i>2</i>	<i>3</i>	<i>4</i>
One person	—	22 694	—	—	—
One unextended nuclear family	—	—	13 713	15 190	15 974
One vertically extended nuclear family	—	—	—	2 807	3 549
One horizontally extended nuclear family	—	—	—	637	770
Two or more nuclear families	—	—	—	—	861
Related persons forming no nuclear family	—	—	4 375	1 533	588
Unrelated persons	—	—	2 268	833	189
Households composed of non-usual household members only	938	—	—	—	—
Total	938	22 694	20 356	21 000	21 931

COVERAGE: All land-based domestic households.

<i>5</i>	<i>6</i>	<i>7</i>	<i>8</i>	<i>9</i>	<i>10 and over</i>	<i>Total</i>
—	—	—	—	—	—	22 694
10 430	4 984	1 925	658	168	70	63 112
3 822	2 548	1 715	623	224	70	15 358
651	371	119	56	21	7	2 632
1 701	1 883	1 617	784	497	525	7 868
217	63	21	—	—	—	6 797
77	49	28	7	7	14	3 472
—	—	—	—	—	—	938
16 898	9 898	5 425	2 128	917	686	122 871

Table 7 HOUSEHOLD SIZE AND NUMBER OF WORKING HOUSEHOLD MEMBERS

<i>Household Size</i>	<i>Number of Working Household Members</i>							<i>Total</i>
	<i>0</i>	<i>1</i>	<i>2</i>	<i>3</i>	<i>4</i>	<i>5</i>	<i>6 and over</i>	
1	6 643	18 571	—	—	—	—	—	25 214
2	2 597	8 036	10 605	—	—	—	—	21 238
3	1 120	7 581	9 002	3 157	—	—	—	20 860
4	623	7 287	8 302	3 829	1 372	—	—	21 413
5	245	4 158	5 376	3 815	2 072	483	—	16 149
6	112	1 645	2 709	2 072	1 701	987	217	9 443
7	35	546	1 064	1 127	1 085	826	308	4 991
8	14	133	378	413	469	350	210	1 967
9	7	56	105	161	196	245	154	924
10 and over	—	7	35	84	182	119	245	672
Total	11 396	48 020	37 576	14 658	7 077	3 010	1 134	122 871

COVERAGE: All land-based domestic households.

Table 8 AGE AND MARITAL STATUS

<i>Age Group</i>	<i>Sex</i>	<i>Marital Status</i>				<i>Total</i>
		<i>Never married</i>	<i>Married</i>	<i>Widowed</i>	<i>Divorced/ Separated</i>	
15–19	M	17 192	63	—	—	17 255
	F	14 798	294	—	—	15 092
20–24	M	21 952	1 512	—	42	23 506
	F	18 074	4 585	14	63	22 736
25–29	M	19 621	8 715	14	161	28 511
	F	10 297	12 439	49	98	22 883
30–34	M	8 792	13 111	98	287	22 288
	F	3 220	13 370	182	287	17 059
35–39	M	3 332	12 425	49	266	16 072
	F	1 407	10 934	266	217	12 824
40–44	M	1 484	8 253	126	168	10 031
	F	406	6 762	189	161	7 518
45–49	M	1 267	9 807	161	231	11 466
	F	238	8 155	497	182	9 072
50–54	M	1 288	10 640	385	189	12 502
	F	168	9 359	1 211	133	10 871
55–59	M	847	10 451	518	252	12 068
	F	245	8 120	1 974	161	10 500
60–64	M	644	9 002	791	196	10 633
	F	231	6 748	3 031	217	10 227
65 and over	M	637	14 028	2 779	196	17 640
	F	952	7 763	13 902	294	22 911
Total	M	77 056	98 007	4 921	1 988	181 972
	F	50 036	88 529	21 315	1 813	161 693
	T	127 092	186 536	26 236	3 801	343 665

COVERAGE: All land-based population aged 15 and over.

Table 9 AGE AND EDUCATIONAL ATTAINMENT

Age Group	Sex	Educational Attainment			
		No schooling/ Kindergarten	Primary	Lower secondary	Upper secondary
0– 4	M	14 574	—	—	—
	F	13 041	—	—	—
5– 9	M	3 360	10 178	—	—
	F	3 514	9 149	—	—
10–14	M	42	7 371	6 461	49
	F	77	6 832	6 314	42
15–19	M	56	644	6 034	8 029
	F	21	378	3 612	8 561
20–24	M	70	2 786	6 489	7 784
	F	112	3 045	4 018	10 101
25–29	M	336	6 321	7 819	8 561
	F	329	6 685	4 207	7 952
30–34	M	273	7 546	5 922	5 362
	F	511	6 524	3 339	4 739
35–39	M	287	5 845	3 633	3 927
	F	553	5 299	2 226	3 213
40–44	M	413	4 039	1 946	2 114
	F	833	3 486	1 099	1 239
45–49	M	896	4 928	2 051	1 939
	F	1 666	4 522	973	1 064
50–54	M	1 596	6 846	1 596	1 512
	F	4 137	4 949	840	539
55–59	M	1 904	7 105	1 295	1 085
	F	5 516	3 766	616	378
60–64	M	1 848	6 293	1 043	931
	F	5 719	3 465	490	378
65 and over	M	3 997	9 373	1 365	1 729
	F	16 107	5 348	406	700
Total	M	29 652	79 275	45 654	43 022
	F	52 136	63 448	28 140	38 906
	T	81 788	142 723	73 794	81 928
Sex ratio		569	1 249	1 622	1 106

COVERAGE: All land-based population.

<i>Matriculation</i>	<i>Craft courses in technical institute</i>	<i>Cert./Ord. Dip. courses in technical institute/polytechnic</i>	<i>Tertiary</i>		<i>Total</i>
			<i>Non- degree courses</i>	<i>Degree courses</i>	
—	—	—	—	—	14 574
—	—	—	—	—	13 041
—	—	—	—	—	13 538
—	—	—	—	—	12 663
—	—	—	—	—	13 923
—	—	—	—	—	13 265
1 575	315	413	140	49	17 255
1 624	28	567	196	105	15 092
2 534	301	1 274	1 337	931	23 506
2 345	77	1 204	1 183	651	22 736
1 736	84	931	1 113	1 610	28 511
1 365	21	567	805	952	22 883
763	28	294	721	1 379	22 288
602	—	105	658	581	17 059
728	28	182	560	882	16 072
392	14	98	623	406	12 824
399	—	84	371	665	10 031
210	—	35	329	287	7 518
287	7	91	294	973	11 466
189	—	14	294	350	9 072
168	—	84	210	490	12 502
77	—	21	126	182	10 871
175	—	56	168	280	12 068
28	—	7	84	105	10 500
98	—	—	98	322	10 633
35	—	—	35	105	10 227
266	7	49	140	714	17 640
56	—	7	147	140	22 911
8 729	770	3 458	5 152	8 295	224 007
6 923	140	2 625	4 480	3 864	200 662
15 652	910	6 083	9 632	12 159	424 669
1 261	5 500	1 317	1 150	2 147	1 116

Table 10 AGE AND SCHOOL ATTENDANCE

Age Group	Sex	Educational Level						Total
		Kinder- garten	Primary	Lower secondary	Upper secondary	Matri- culation	Tertiary	
Under 5	M	5 782	—	—	—	—	—	5 782
	F	5 229	—	—	—	—	—	5 229
5	M	2 506	91	—	—	—	—	2 597
	F	2 800	84	—	—	—	—	2 884
6	M	728	2 030	—	—	—	—	2 758
	F	595	2 149	—	—	—	—	2 744
7	M	—	2 520	—	—	—	—	2 520
	F	35	2 177	—	—	—	—	2 212
8	M	7	2 709	—	—	—	—	2 716
	F	14	2 303	—	—	—	—	2 317
9	M	—	2 793	—	—	—	—	2 793
	F	—	2 408	—	—	—	—	2 408
10	M	—	2 660	7	—	—	—	2 667
	F	—	2 443	7	—	—	—	2 450
11	M	—	2 604	42	—	—	—	2 646
	F	—	2 492	84	—	—	—	2 576
12	M	—	1 519	1 239	—	—	—	2 758
	F	—	1 351	1 309	—	—	—	2 660
13	M	—	378	2 618	7	—	—	3 003
	F	—	385	2 233	—	—	—	2 618
14	M	—	154	2 506	42	—	—	2 702
	F	—	126	2 660	42	—	—	2 828
15	M	—	126	1 911	1 078	—	—	3 115
	F	—	49	1 344	1 148	7	—	2 548
16	M	—	42	749	1 708	21	—	2 520
	F	—	14	497	1 890	42	—	2 443
17	M	—	21	245	1 421	385	7	2 079
	F	—	7	168	1 659	441	14	2 289
18	M	—	—	56	980	644	56	1 736
	F	—	—	63	777	735	70	1 645
19	M	—	—	56	511	602	105	1 274
	F	—	—	42	280	553	203	1 078
20	M	—	—	21	119	469	238	847
	F	—	—	7	98	294	217	616
21	M	—	—	—	56	294	357	707
	F	—	—	7	42	140	294	483
22	M	—	—	—	—	126	364	490
	F	—	—	—	35	56	154	245
23	M	—	—	—	7	49	224	280
	F	—	—	—	28	49	112	189
24	M	—	—	—	7	42	84	133
	F	—	—	—	—	28	70	98
25 and over	M	—	—	—	14	28	182	224
	F	—	—	—	—	49	119	168
Total	M	9 023	17 647	9 450	5 950	2 660	1 617	46 347
	F	8 673	15 988	8 421	5 999	2 394	1 253	42 728
	T	17 696	33 635	17 871	11 949	5 054	2 870	89 075
Sex ratio		1 040	1 104	1 122	992	1 111	1 291	1 085

COVERAGE: All land-based persons who were studying full-time in schools or educational institutions at the time of the Census.

Table 11 AGE AND ACTIVITY STATUS (ECONOMICALLY INACTIVE)

Age Group	Sex	<i>Activity Status (Economically Inactive)</i>					Total
		<i>Home-makers</i>	<i>Students</i>	<i>Of independent means</i>	<i>Retired persons</i>	<i>Others</i>	
Under 15	M	14	32 963	—	—	9 058	42 035
	F	—	30 933	—	—	8 036	38 969
15-19	M	14	10 906	7	—	119	11 046
	F	203	10 143	14	—	70	10 430
20-24	M	7	2 338	7	—	350	2 702
	F	1 701	1 638	63	—	294	3 696
25-29	M	28	161	28	—	413	630
	F	5 376	147	105	—	315	5 943
30-34	M	14	14	56	—	392	476
	F	6 664	7	35	—	196	6 902
35-39	M	28	21	21	—	266	336
	F	5 236	—	42	—	154	5 432
40-44	M	14	—	28	—	245	287
	F	3 031	—	14	—	126	3 171
45-49	M	7	—	14	77	364	462
	F	3 983	—	21	42	189	4 235
50-54	M	21	—	35	448	378	882
	F	5 509	—	21	231	392	6 153
55-59	M	98	—	42	1 477	574	2 191
	F	5 705	—	28	770	455	6 958
60-64	M	84	—	35	3 528	574	4 221
	F	5 334	—	70	1 547	490	7 441
65 and over	M	119	—	77	10 906	868	11 970
	F	7 462	—	308	10 171	1 589	19 530
Total	M	448	46 403	350	16 436	13 601	77 238
	F	50 204	42 868	721	12 761	12 306	118 860
	T	50 652	89 271	1 071	29 197	25 907	196 098

COVERAGE: All land-based economically inactive population.

Table 12 AGE AND ACTIVITY STATUS (ECONOMICALLY ACTIVE)

<i>Activity Status (Working)</i>							
<i>Age Group</i>	<i>Sex</i>	<i>Self-employed (hawking)</i>	<i>Self-employed (others)</i>	<i>Employers</i>	<i>Out-workers</i>	<i>Employees, public sector</i>	<i>Employees, private sector</i>
15-19	M	28	35	—	—	182	4 732
	F	14	35	—	7	49	3 619
20-24	M	133	357	210	21	1 498	16 863
	F	42	217	49	63	1 015	16 289
25-29	M	364	826	714	56	1 995	22 736
	F	77	231	119	378	1 204	14 035
30-34	M	441	1 148	1 288	56	1 771	16 485
	F	98	308	182	770	700	7 273
35-39	M	420	945	1 463	56	1 302	11 081
	F	105	322	245	756	504	4 830
40-44	M	259	707	1 141	98	763	6 496
	F	84	280	133	406	322	2 730
45-49	M	364	952	1 218	112	833	7 119
	F	168	196	105	294	315	3 402
50-54	M	511	952	1 309	238	637	7 504
	F	336	224	105	217	161	3 150
55-59	M	448	812	1 001	175	504	6 370
	F	203	196	84	98	84	2 555
60-64	M	371	476	672	35	63	4 501
	F	196	154	35	91	21	2 079
65 and over	M	455	567	644	105	42	3 465
	F	259	161	70	119	14	2 485
Total	M	3 794	7 777	9 660	952	9 590	107 352
	F	1 582	2 324	1 127	3 199	4 389	62 447
	T	5 376	10 101	10 787	4 151	13 979	169 799

COVERAGE: All land-based economically active population.

Activity Status (Unemployed)

<i>Unpaid family workers</i>	<i>Student workers</i>	<i>Sub-total</i>	<i>Waiting to take up new work</i>	<i>Seeking work</i>	<i>Not seeking work because believed no work available/expected to return to work</i>	<i>Sub-total</i>	<i>Total</i>
119	448	5 544	49	574	42	665	6 209
49	406	4 179	42	378	63	483	4 662
217	455	19 754	63	959	28	1 050	20 804
189	287	18 151	119	714	56	889	19 040
84	105	26 880	77	882	42	1 001	27 881
329	42	16 415	63	441	21	525	16 940
28	—	21 217	49	504	42	595	21 812
378	7	9 716	49	371	21	441	10 157
49	—	15 316	49	364	7	420	15 736
455	—	7 217	7	119	49	175	7 392
14	—	9 478	49	203	14	266	9 744
287	—	4 242	7	98	—	105	4 347
49	—	10 647	56	273	28	357	11 004
259	—	4 739	7	63	28	98	4 837
35	—	11 186	63	336	35	434	11 620
392	—	4 585	35	77	21	133	4 718
21	—	9 331	49	427	70	546	9 877
210	—	3 430	21	35	56	112	3 542
56	—	6 174	28	140	70	238	6 412
119	—	2 695	14	63	14	91	2 786
98	—	5 376	42	147	105	294	5 670
168	—	3 276	21	35	49	105	3 381
770	1 008	140 903	574	4 809	483	5 866	146 769
2 835	742	78 645	385	2 394	378	3 157	81 802
3 605	1 750	219 548	959	7 203	861	9 023	228 571

Table 13 OCCUPATION AND INDUSTRY

<i>Occupation</i>	<i>Industry</i>				
	<i>Agriculture and fishing</i>	<i>Mining and quarrying</i>	<i>Manufacturing (textile and wearing apparel)</i>	<i>Manufacturing (others)</i>	<i>Electricity, gas and water</i>
Professional, technical and related workers	—	—	175	1 407	266
Administrative and managerial workers	—	—	1 449	1 722	14
Clerical and related workers	14	7	3 360	3 430	301
Sales workers	—	—	728	1 260	21
Service workers	—	7	2 954	679	77
Agricultural workers and fishermen	91	—	—	—	—
Production and related workers, transport equipment operators and labourers	21	14	40 789	29 673	854
Armed forces and unclassifiable	—	—	21	14	—
Total	126	28	49 476	38 185	1 533

COVERAGE: All land-based working persons including unemployed persons having had a previous job.

<i>Construction</i>	<i>Wholesale and retail trade, restaurants and hotels</i>	<i>Transport, storage and communication</i>	<i>Financing, insurance, real estate and business services</i>	<i>Services</i>	<i>Un-classifiable</i>	<i>Total</i>
938	420	553	1 603	11 543	49	16 954
315	1 694	448	1 127	427	—	7 196
623	8 680	3 388	7 049	5 208	133	32 193
56	26 397	217	1 015	672	14	30 380
210	14 231	952	1 827	12 901	329	34 167
—	—	—	—	182	—	273
13 405	6 132	10 318	602	4 144	301	106 253
7	7	7	7	161	42	266
15 554	57 561	15 883	13 230	35 238	868	227 682

Table 14 AGE AND INCOME FROM MAIN EMPLOYMENT

<i>Monthly Income from Main Employment (HK\$)</i>								
<i>Age Group</i>	<i>Sex</i>	<i>Under 1 000</i>	<i>1 000– 1 499</i>	<i>1 500– 1 999</i>	<i>2 000– 2 499</i>	<i>2 500– 2 999</i>	<i>3 000– 3 499</i>	<i>3 500– 3 999</i>
15–19	M	798	1 071	1 792	1 148	364	154	70
	F	539	693	1 596	980	259	35	7
20–24	M	812	1 211	3 052	5 208	3 129	2 905	1 302
	F	1 057	1 351	4 298	5 341	2 660	1 484	539
25–29	M	630	994	1 764	4 627	4 144	5 607	2 639
	F	1 316	1 204	2 380	3 493	2 191	1 855	840
30–34	M	518	651	1 127	2 786	2 793	4 228	2 044
	F	1 029	812	1 323	1 519	749	1 050	427
35–39	M	385	553	756	1 645	1 876	2 653	1 281
	F	966	644	952	952	616	595	280
40–44	M	406	308	609	1 316	1 106	1 526	714
	F	602	420	763	679	413	203	91
45–49	M	567	455	756	1 435	1 379	1 673	833
	F	693	602	1 064	728	413	217	84
50–54	M	574	637	1 043	2 016	1 575	1 631	770
	F	693	735	952	812	392	210	42
55–59	M	511	693	1 442	1 834	1 470	1 071	497
	F	812	714	644	539	168	77	21
60–64	M	553	707	1 225	1 204	623	665	231
	F	672	616	700	322	119	70	14
65 and over	M	595	952	1 008	1 022	385	399	196
	F	1 267	938	483	203	56	63	14
Total	M	6 349	8 232	14 574	24 241	18 844	22 512	10 577
	F	9 646	8 729	15 155	15 568	8 036	5 859	2 359
	T	15 995	16 961	29 729	39 809	26 880	28 371	12 936

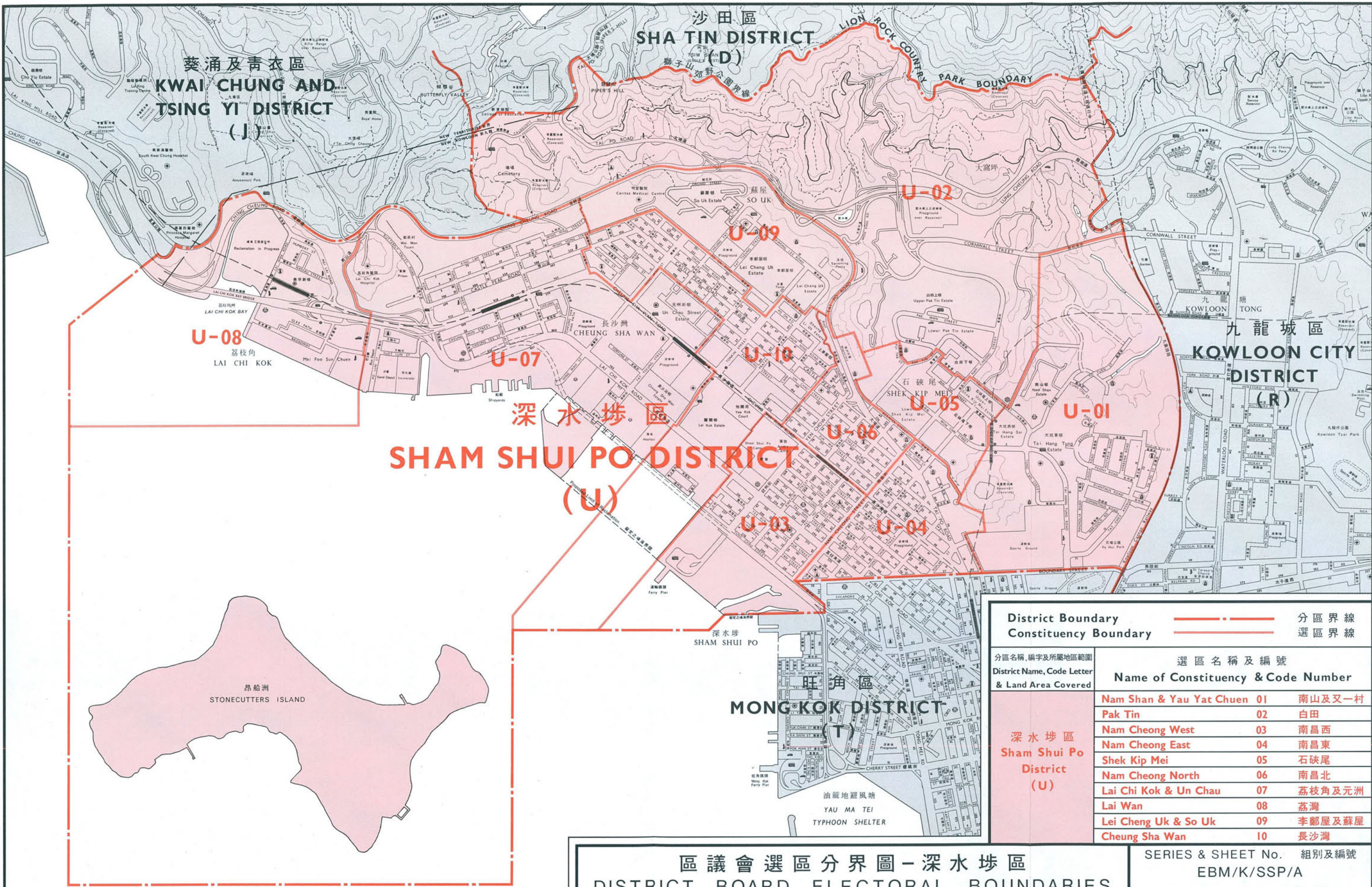
COVERAGE: All land-based working persons.

<i>4 000– 4 999</i>	<i>5 000– 5 999</i>	<i>6 000– 7 999</i>	<i>8 000– 9 999</i>	<i>10 000– 14 999</i>	<i>15 000– 19 999</i>	<i>20 000 and over</i>	<i>Unpaid family workers</i>	<i>Total</i>
21	7	—	—	—	—	—	119	5 544
14	7	—	—	—	—	—	49	4 179
1 302	399	168	35	14	—	—	217	19 754
609	455	154	7	7	—	—	189	18 151
3 157	1 400	1 001	392	343	77	21	84	26 880
1 323	518	644	175	133	7	7	329	16 415
2 499	1 568	1 253	672	686	210	154	28	21 217
693	448	532	385	280	63	28	378	9 716
1 778	1 001	1 176	609	868	371	315	49	15 316
336	252	504	392	161	84	28	455	7 217
966	658	511	315	616	154	259	14	9 478
147	105	147	217	112	35	21	287	4 242
1 127	672	574	350	462	168	147	49	10 647
119	70	126	259	77	14	14	259	4 739
938	595	504	238	406	98	126	35	11 186
112	84	70	49	21	—	21	392	4 585
595	231	420	196	161	56	133	21	9 331
56	28	63	70	21	—	7	210	3 430
308	259	175	35	63	21	49	56	6 174
28	7	7	—	14	—	7	119	2 695
217	161	210	35	56	7	35	98	5 376
28	14	7	7	21	—	7	168	3 276
12 908	6 951	5 992	2 877	3 675	1 162	1 239	770	140 903
3 465	1 988	2 254	1 561	847	203	140	2 835	78 645
16 373	8 939	8 246	4 438	4 522	1 365	1 379	3 605	219 548

Table 15 AGE AND POPULATION MOVEMENT

<i>Place of Residence 5 Years Ago</i>						
<i>Age Group</i>	<i>Sex</i>	<i>In same District</i>	<i>In different District</i>	<i>Marine</i>	<i>Outside Hong Kong</i>	<i>Total</i>
5- 9	M	10 395	2 555	7	581	13 538
	F	9 835	2 359	7	462	12 663
10-14	M	11 550	1 841	—	532	13 923
	F	11 081	1 638	—	546	13 265
15-19	M	14 595	2 107	—	553	17 255
	F	13 083	1 526	—	483	15 092
20-24	M	19 698	3 199	—	609	23 506
	F	17 619	4 214	7	896	22 736
25-29	M	21 350	6 244	7	910	28 511
	F	15 253	6 139	7	1 484	22 883
30-34	M	16 254	5 348	14	672	22 288
	F	11 613	4 039	—	1 407	17 059
35-39	M	11 725	3 717	—	630	16 072
	F	9 457	2 380	—	987	12 824
40-44	M	7 679	1 946	7	399	10 031
	F	6 062	980	—	476	7 518
45-49	M	9 485	1 582	7	392	11 466
	F	7 448	1 155	—	469	9 072
50-54	M	10 612	1 624	7	259	12 502
	F	9 429	987	—	455	10 871
55-59	M	10 640	1 281	7	140	12 068
	F	9 317	938	—	245	10 500
60-64	M	9 562	910	7	154	10 633
	F	9 002	1 001	—	224	10 227
65 and over	M	15 764	1 659	7	210	17 640
	F	19 775	2 597	—	539	22 911
Total	M	169 309	34 013	70	6 041	209 433
	F	148 974	29 953	21	8 673	187 621
	T	318 283	63 966	91	14 714	397 054

COVERAGE: All land-based population aged 5 and over.



深水埗區
SHAM SHUI PO DISTRICT
(U)

District Boundary ———— 分區界線
Constituency Boundary ———— 選區界線

分區名稱、編字及所屬地區範圍 District Name, Code Letter & Land Area Covered	選區名稱及編號 Name of Constituency & Code Number	
深水埗區 Sham Shui Po District (U)	Nam Shan & Yau Yat Chuen	01 南山及又一村
	Pak Tin	02 白田
	Nam Cheong West	03 南昌西
	Nam Cheong East	04 南昌東
	Shek Kip Mei	05 石硤尾
	Nam Cheong North	06 南昌北
	Lai Chi Kok & Un Chau	07 荔枝角及元洲
	Lai Wan	08 荔灣
	Lei Cheng Uk & So Uk	09 李鄭屋及蘇屋
	Cheung Sha Wan	10 長沙灣

區議會選區分界圖—深水埗區
DISTRICT BOARD ELECTORAL BOUNDARIES
SHAM SHUI PO DISTRICT
SCALE 1:15 000 比例尺

SERIES & SHEET No. 組別及編號
EBM/K/SSP/A
EDITION 2 - 1984 第二版
地政署測量部
香港政府版權

