

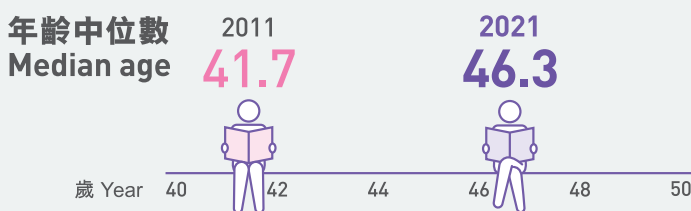
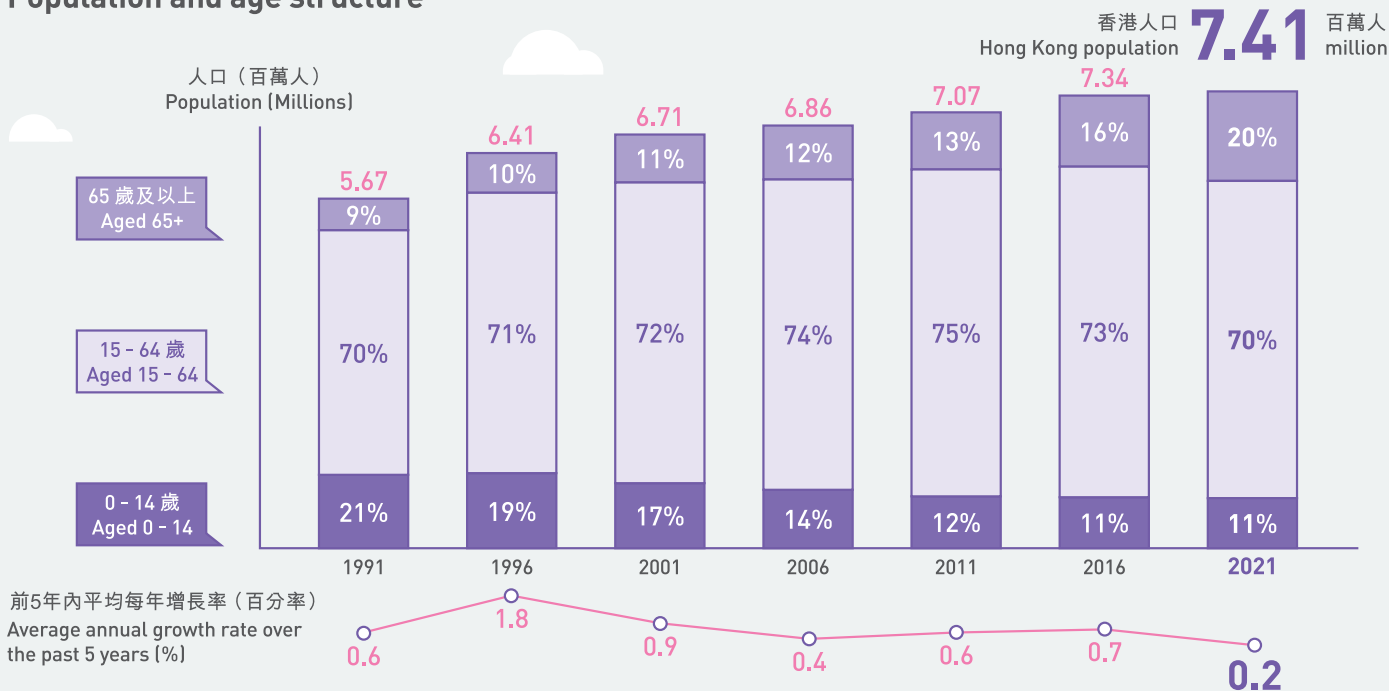
Key Statistics 主要統計數字



香港特別行政區 政府統計處
Census and Statistics Department
Hong Kong Special Administrative Region



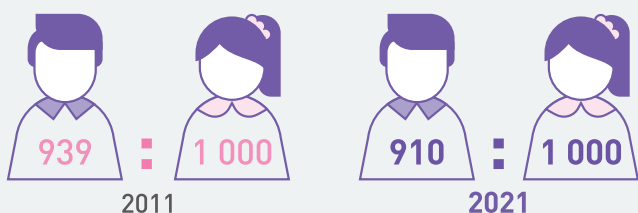
人口數目及年齡結構 Population and age structure



20歲及以上從未結婚的人口 (不包括外籍家庭傭工) 比例 Proportion of never married population aged 20 and over (excluding foreign domestic helpers)

年齡組別 Age group	男 Male		女 Female	
	2011	2021	2011	2021
50+	6%	8%	6%	10%
45-49	14%	19%	14%	17%
40-44	21%	23%	17%	20%
35-39	29%	33%	22%	25%
30-34	50%	58%	38%	46%
25-29	83%	87%	71%	80%
20-24	97%	97%	95%	95%

性別比率 (男性數目相對每千名女性, 不包括外籍家庭傭工) Sex ratio (Number of males per 1 000 females, excluding foreign domestic helpers)

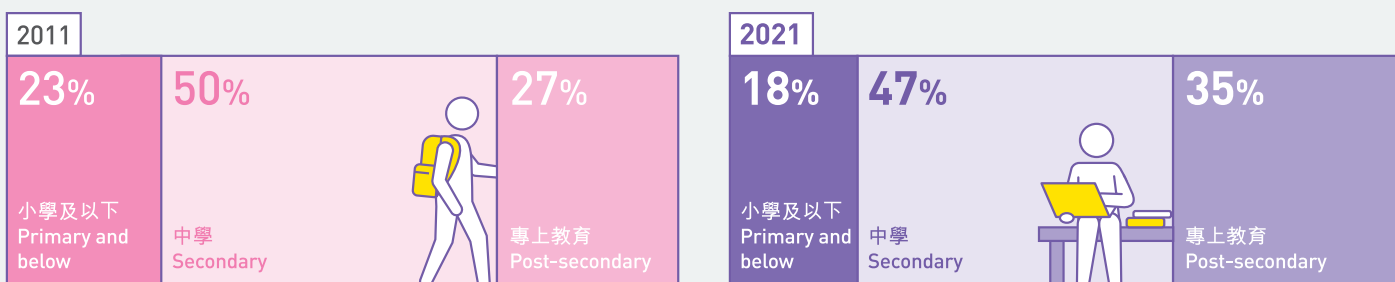


Population



Education

按教育程度 (最高就讀程度) 劃分的15歲及以上人口分布 Distribution of population aged 15 and over by educational attainment (highest level attended)



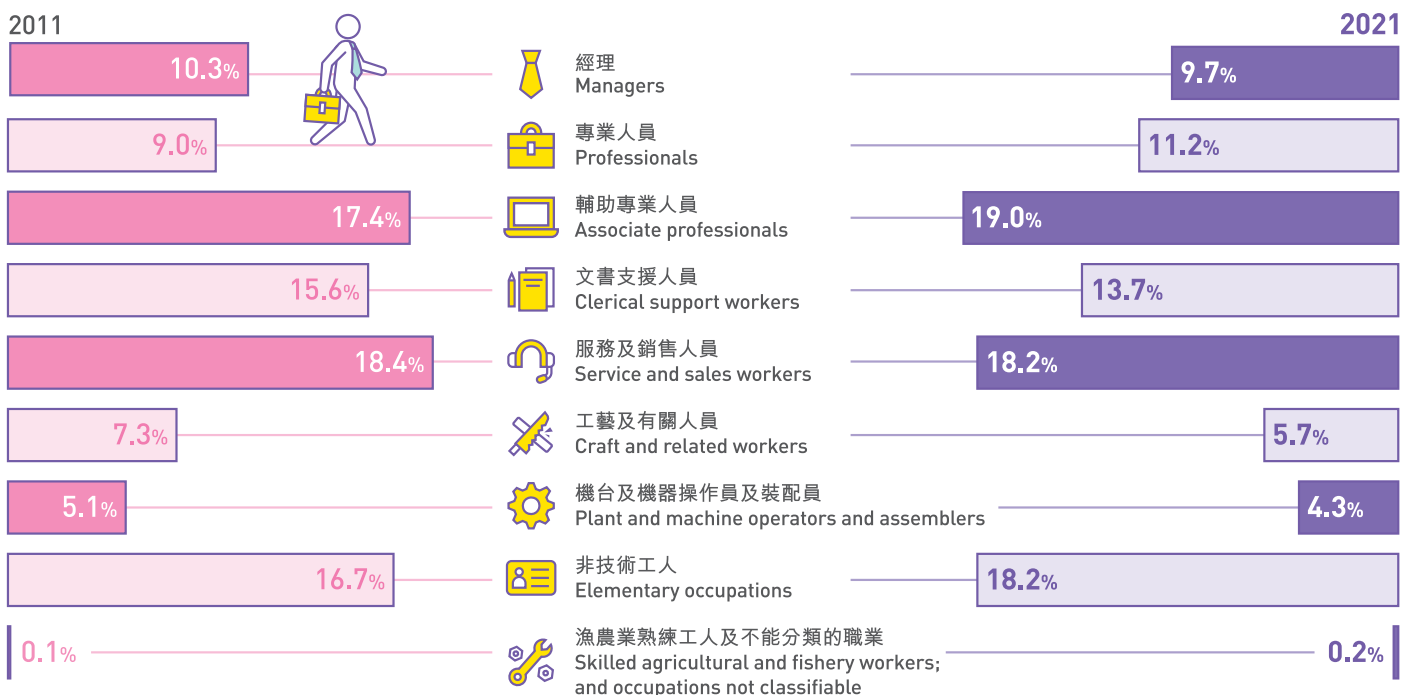
按性別劃分的工作人口

Working population by sex



按職業劃分的工作人口分布

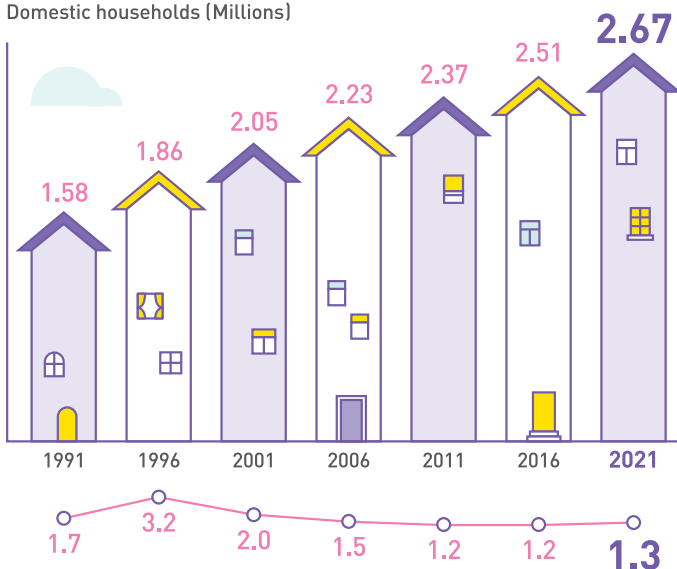
Distribution of working population by occupation



家庭住戶數目

Domestic households

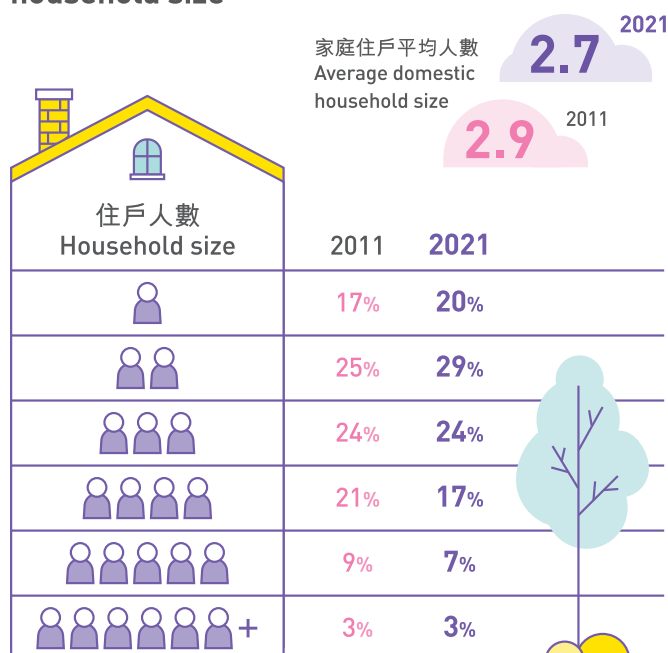
家庭住戶 (百萬戶)
Domestic households (Millions)



前5年內平均每年增長率 (百分率)
Average annual growth rate over the past 5 years (%)

按住戶人數劃分的家庭住戶數目分布

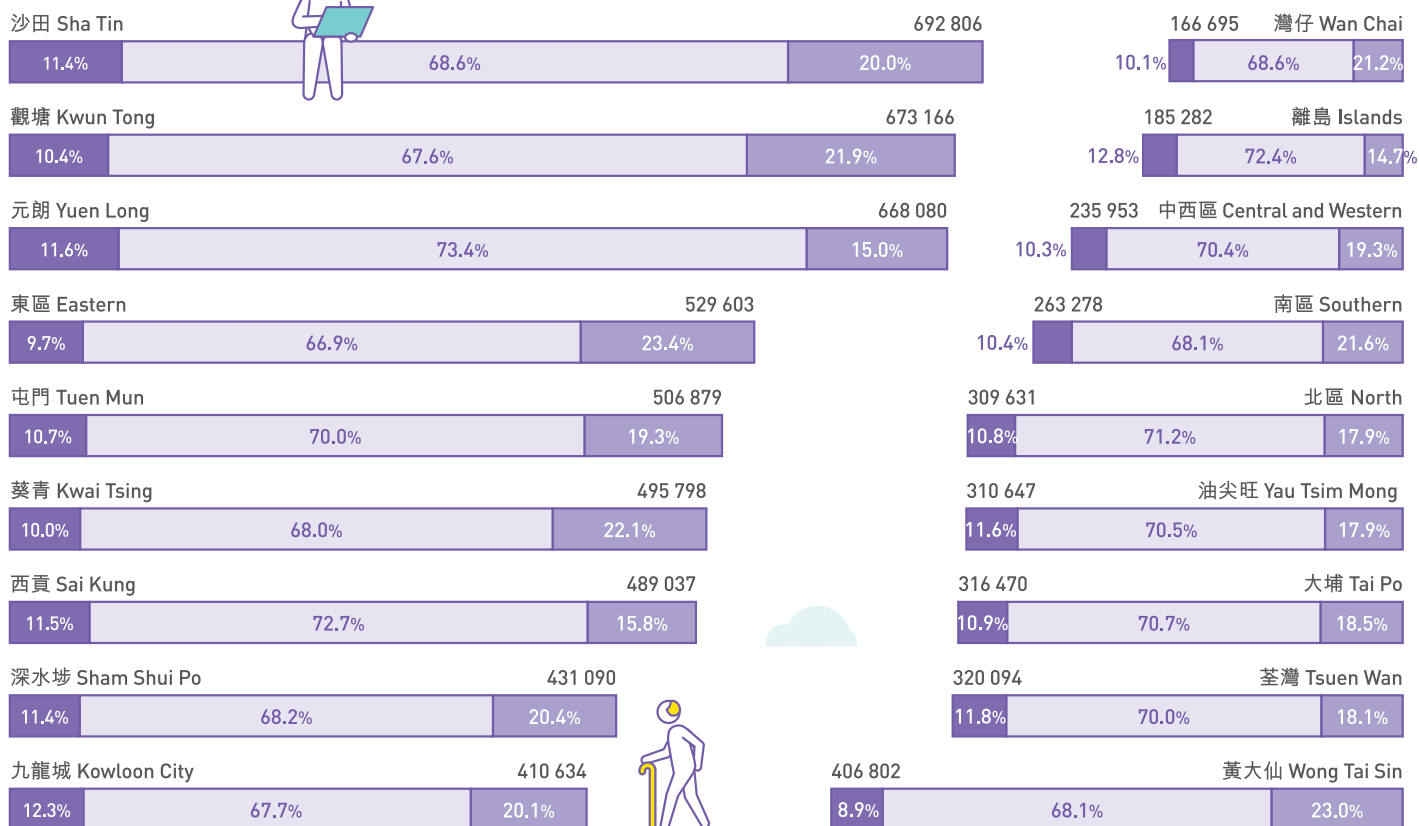
Distribution of domestic households by household size



人口及按年齡組別劃分的人口比例 Population and proportion of population by age group

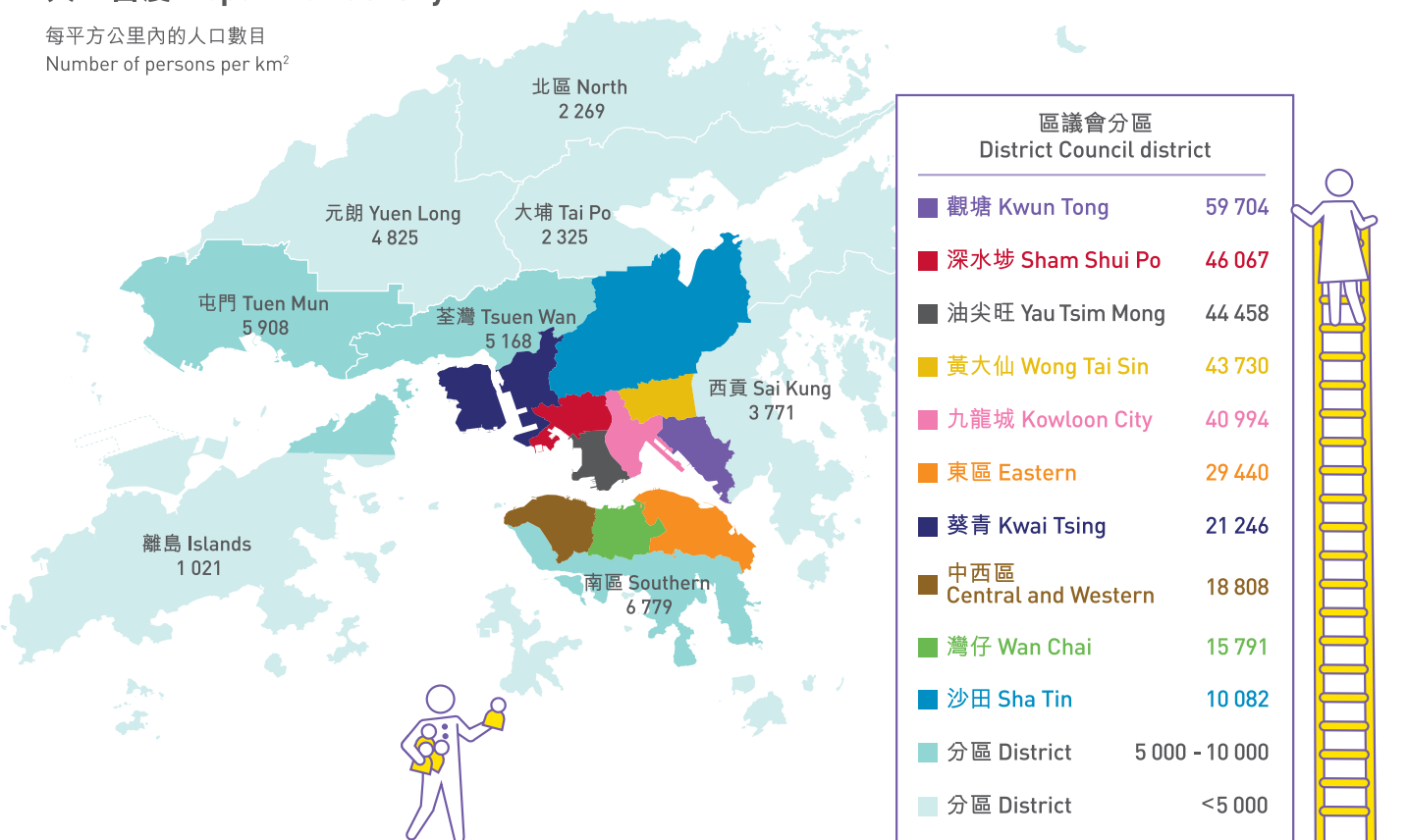
區議會分區
District Council district

人口(人)
Population (Persons)

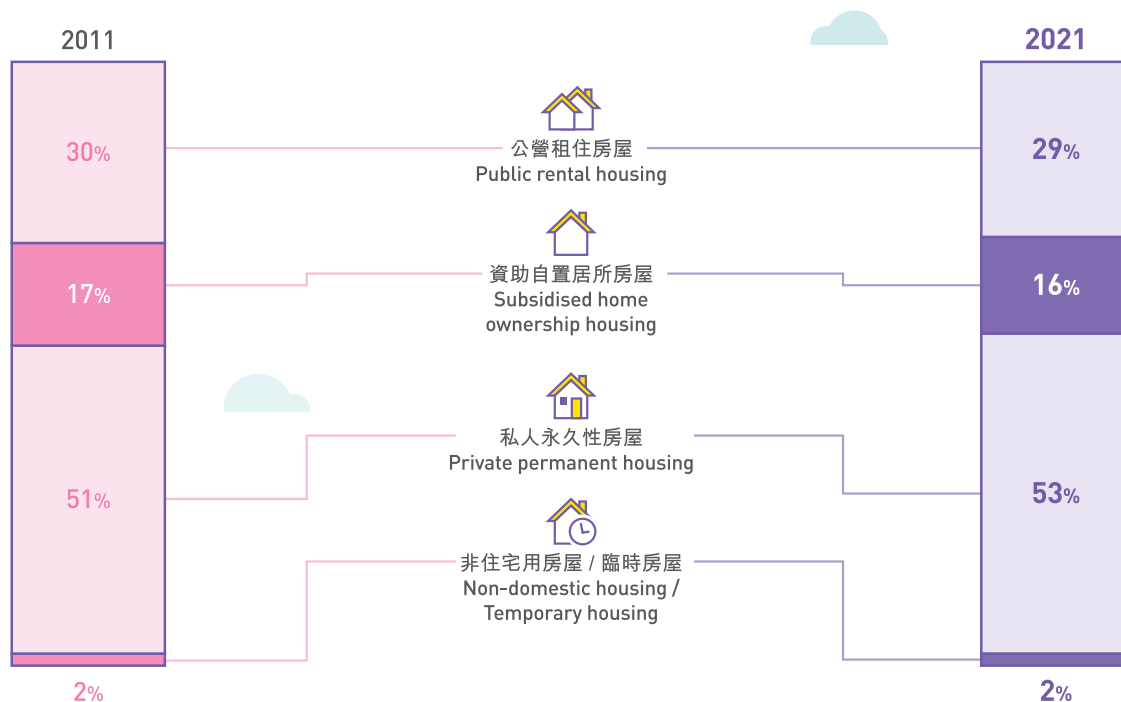


人口密度 Population density

每平方公里內的人口數目
Number of persons per km²



按房屋類型劃分的人口分布 Distribution of population by type of housing



普查數據助香港 規劃發展前途創

2021 Census :
Provide Data for Hong Kong's Future



如需要更多資料，請參閱
《2021年人口普查 - 簡要報告》。
For more information, please refer to the
2021 Population Census - Summary Results.



如有查詢，請聯絡2021年人口普查辦事處：
For enquiries, please contact 2021 Population Census Office :

☎ 電話 Tel.: (852) 3428 2744

📠 圖文傳真 Fax: (852) 3584 7864

✉ 電郵 Email: census2021@censtatd.gov.hk