

這份刊物的 PDF 版本的文字是從印刷版掃描而成，再利用光學字符識別軟件轉換成電子格式。由於原印刷版本已印製並保存多年，光學字符識別技術未必能準確地識別某些文字或數字。因此，搜索或複製此 PDF 檔案內的文字時應加以注意。

The text of this PDF publication was scanned from its printed version and then converted to electronic text using Optical Character Recognition (OCR) software. Because of the age and condition of the original printed copy, the OCR may not recognise certain characters or figures accurately. Caution should therefore be taken when searching or copying text from this PDF publication.

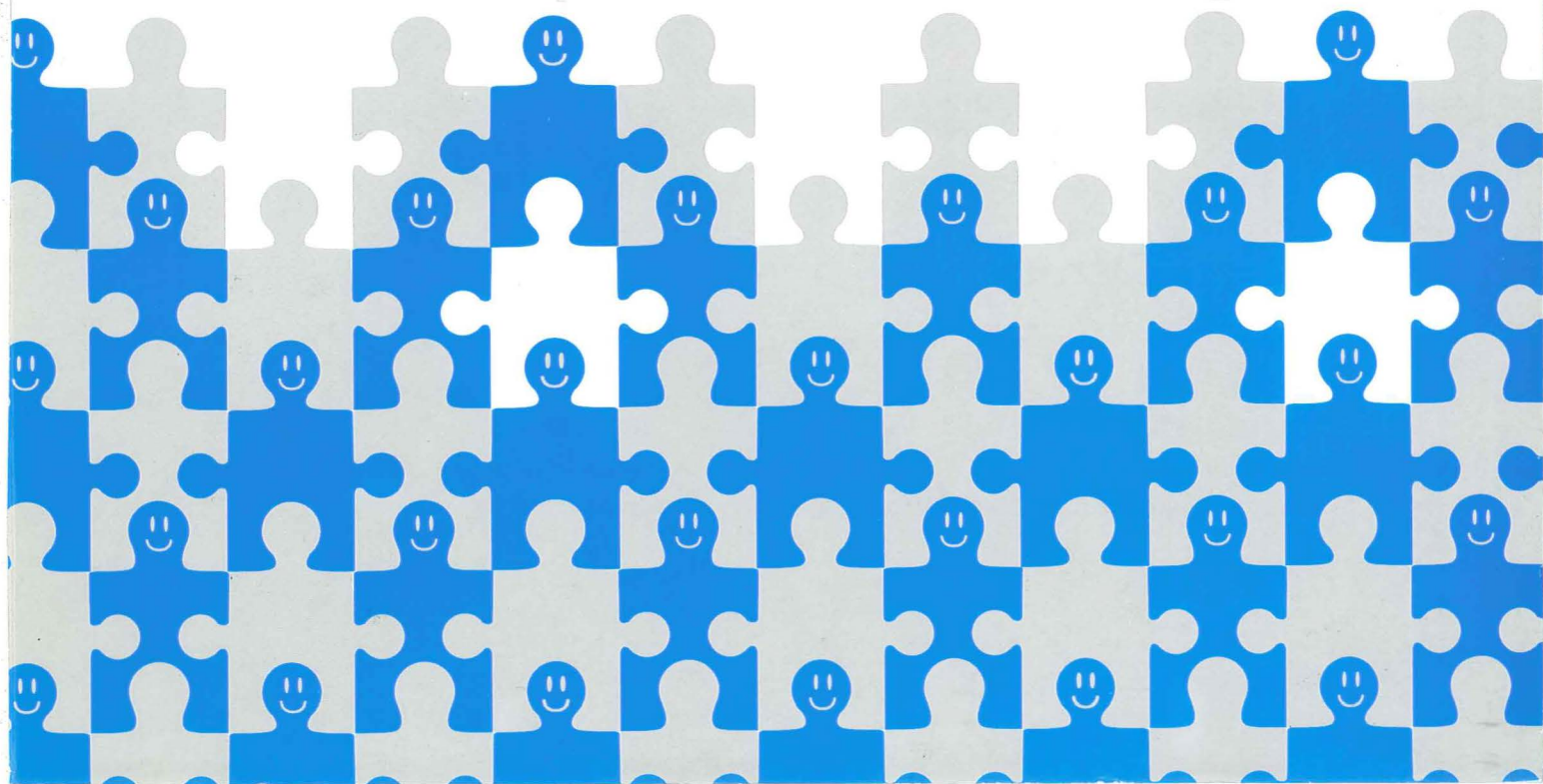
# 1996 Population By-census

## Summary Results

---



Census and Statistics Department  
Hong Kong



# **1996 Population By-census**

## **Summary Results**

---

**Census and Statistics Department  
Hong Kong**

Enquiries about this publication can be directed to:

**1996 Population By-census Office**

**Census and Statistics Department, Hong Kong.**

**Address : 6/F, Fortress Tower, 250 King's Road, North Point, Hong Kong.**

**Tel. No.: 2887 5139 Fax. No.: 2512 2656**



# Contents

	<b>Page</b>
<b>Foreword</b>	ix
<b>Introduction</b>	1
<b>Coverage</b>	1
<b>Summary Findings</b>	3
<b>Summary Tables</b>	
<b>1. Population Size and Structure</b>	
<i>Population Size</i>	
Table 1 Population Present in Hong Kong and Resident Population, 1996	12
Table 2 Resident Population and Annual Growth Rates, 1971 - 1996	12
<i>Age and Sex Structure</i>	
Table 3 Population by Sex and Age, 1986, 1991 and 1996	13
Chart 1 Population Pyramids, 1986, 1991 and 1996	14
Table 4 Age Dependency Ratios, 1986, 1991 and 1996	15
Table 5 Sex Ratios by Age, 1986, 1991 and 1996	15
<b>2. Other Demographic Characteristics</b>	
<i>Marital Status</i>	
Table 6 Population Aged 15 and Over by Sex and Marital Status, 1986, 1991 and 1996	18
Table 7 Proportion of Never Married Population Aged 15-44 by Sex and Age, 1986, 1991 and 1996	19
<i>Place of Birth</i>	
Table 8 Population by Place of Birth, 1986, 1991 and 1996	19

	<b>Page</b>
<i>Nationality</i>	
Table 9 Population by Nationality, 1991 and 1996	20
<i>Duration of Residence in Hong Kong</i>	
Table 10 Population by Duration of Residence in Hong Kong and Place of Birth, 1991 and 1996	21
<i>Language/Dialect</i>	
Table 11 Population Aged 5 and Over by Usual Language/Dialect, 1991 and 1996	22
Table 12 Proportion of Population Aged 5 and Over Able to Speak Selected Languages/Dialects, 1991 and 1996	22
 <b>3. Education</b>	
<i>Educational Attainment</i>	
Table 13 Population Aged 15 and Over by Educational Attainment, 1986, 1991 and 1996	24
Chart 2 Percentage Distribution of Population Aged 15 and Over by Educational Attainment, 1986, 1991 and 1996	24
<i>School Attendance</i>	
Table 14 School Attendance Rates of Population Aged 3-18 by Age, 1986, 1991 and 1996	25
<i>Field of Education</i>	
Table 15 Population with Tertiary Education by Field of Education, 1986, 1991 and 1996	25
 <b>4. The Labour Force</b>	
<i>Labour Force Size and Structure</i>	
Table 16 Economically Active Population and Labour Force Participation Rates, 1986, 1991 and 1996	28

	<b>Page</b>
Table 17 Economically Active Population by Sex and Age, 1986, 1991 and 1996	29
<b><i>Labour Force Participation</i></b>	
Chart 3 Labour Force Participation Rates by Sex and Age, 1986, 1991 and 1996	30
<b><i>Activity Status</i></b>	
Table 18 Working Population by Activity Status, 1986, 1991 and 1996	31
<b><i>Occupation</i></b>	
Table 19 Working Population by Occupation, 1991 and 1996	31
<b><i>Industry</i></b>	
Table 20 Working Population by Industry, 1986, 1991 and 1996	32
<b><i>Income from Main Employment</i></b>	
Table 21 Working Population by Monthly Income from Main Employment, 1986, 1991 and 1996	33
<b>5. Households</b>	
<b><i>Number of Domestic Households</i></b>	
Table 22 Domestic Households, 1971 - 1996	36
<b><i>Household Size</i></b>	
Table 23 Domestic Households by Household Size, 1986, 1991 and 1996	36
<b><i>Household Composition</i></b>	
Table 24 Domestic Households by Household Composition, 1986, 1991 and 1996	37
<b><i>Household Income</i></b>	
Table 25 Domestic Households by Monthly Household Income, 1986, 1991 and 1996	38

	<b>Page</b>
<b>6. Housing</b>	
<i>Number of Occupied Quarters</i>	
Table 26 Occupied Quarters by Type of Housing, 1986, 1991 and 1996	40
<i>Population by Type of Housing</i>	
Table 27 Population by Type of Housing, 1986, 1991 and 1996	41
<i>Domestic Households by Type of Quarters</i>	
Table 28 Domestic Households by Type of Quarters, 1986, 1991 and 1996	42
<i>Degree of Sharing</i>	
Table 29 Average Number of Domestic Households per Quarters by Type of Housing, 1986, 1991 and 1996	43
<i>Tenure of Accommodation</i>	
Table 30 Domestic Households by Tenure of Accommodation, 1986, 1991 and 1996	44
<i>Household Rent</i>	
Table 31 Median Household Rent by Type of Quarters, 1986, 1991 and 1996	45
<b>7. Geographical Distribution and Internal Migration</b>	
<i>Geographical Distribution</i>	
Table 32 Resident Population by Area, 1986, 1991 and 1996	48
Table 33 Resident Population by District Board District, 1986, 1991 and 1996	49
<i>Population Density</i>	
Table 34 Population Density by District Board District, 1986, 1991 and 1996	50

	<b>Page</b>
<b><i>Internal Migration</i></b>	
Table 35 Population Aged 5 and Over Having Internally Migrated by Area of Original Residence and Area of Current Residence, 1996	51
<b><i>Place of Work</i></b>	
Table 36 Working Population by Place of Work and Area of Residence, 1996	52
<b><i>Place of Study</i></b>	
Table 37 Persons Studying Full-time in Schools or Educational Institutions in Hong Kong by Place of Study and Area of Residence, 1996	53
<b>Definition of Terms</b>	55



## Foreword

A population by-census was conducted by the Census and Statistics Department in March 1996. This report presents the final results of the 1996 Population By-census in summary form.

This report contains 37 summary tables covering the whole range of by-census topics. Comparisons are made with the results of the 1986 By-census and 1991 Census where possible.

Statistical tables and charts given in this report are part of the first batch of data released on the 1996 Population By-census. They describe the salient features of the population profile and the broad demographic changes in Hong Kong. Effort has been made to publish these By-census data speedily. More detailed results and analyses, which are not attempted in this report, will be available in other publications to be released in stages.

Frederick W. H. HO  
Commissioner for Census and Statistics

November 1996

## Introduction

It is established practice in Hong Kong since 1961 to conduct a population census every ten years and a by-census in the middle of the intercensal period. In line with this practice, a population by-census was conducted in March 1996. This report presents the summary findings based on the results of the 1996 Population By-census.

The 1996 Population By-census was conducted in a nine-day period from 16 to 24 March 1996. About 14 % (i.e. one-seventh) of the population were enumerated and asked about their detailed demographic and socio-economic characteristics.

## Coverage

In the 1991 Population Census and previous censuses/by-censuses, the *de facto* enumeration approach was adopted. All persons who were present in Hong Kong at the reference moment were enumerated. In addition, Hong Kong residents who were temporarily away from Hong Kong were also enumerated. However, detailed questions on demographic and socio-economic characteristics were only asked of those residents present in Hong Kong at the reference moment and census/by-census data were compiled based on the residents present in Hong Kong. As residents who were temporarily away from Hong Kong constituted only a small proportion of the resident population (1.8% in the 1986 Population By-census and 2.7% in the 1991 Population Census), findings pertaining to the residents present in Hong Kong could still be regarded as reflecting the characteristics of the resident population as a whole.

In view that there were more residents temporarily away from Hong Kong or usually working in Mainland China/Macau in recent years, the *de jure* enumeration approach was adopted in the 1996 Population By-census. Members of the household who usually lived in Hong Kong in the six-month period either before or after the reference moment, and those who usually worked in Mainland China/Macau, were all enumerated and asked of their detailed demographic and socio-economic characteristics.

The two enumeration approaches also differ in where a person is enumerated. Under the *de facto* enumeration approach, a person is enumerated in the household and quarters where he is found at the reference moment. If a person happens to be at a friend's or relative's home at the reference moment, he would be enumerated there and treated as a member of that household. On the other hand, any members of that household who are temporarily away from Hong Kong or are not staying in their own household but in other places of accommodation in Hong Kong at the reference moment are excluded. Hence household characteristics on size, composition and income and the geographical distribution of the population may be different from the usual situation. Under the *de jure* enumeration approach, all members of the household (including those who are temporarily away from Hong Kong or are not staying in their own household but in other places of accommodation in Hong Kong) are enumerated in the quarters where they usually reside. The proportion of residents not staying in their own household but in other places of accommodation in Hong Kong at the reference moment was 1.7% in both the 1991 Population Census and the 1996 Population By-census.

Unless otherwise specified, the results of the 1996 Population By-census presented in this report refer to the resident population enumerated under the *de jure* enumeration approach and those of the 1986 Population By-census and the 1991 Population Census refer to those residents present in Hong Kong enumerated under the *de facto* enumeration approach. Data from the 1996 Population By-census are thus not strictly comparable with those from previous censuses/by-censuses due to change in the enumeration approach. The incomparability should not be serious because the proportion of residents who were temporarily away from Hong Kong and the proportion of residents who were not staying in their own households but in other places of accommodation in Hong Kong at the reference moment were relatively small. Nevertheless, caution is required in making comparison.

## **Convention and Symbols**

### ***Symbols***

The following symbols are used throughout the publication :

- ' - ' = nil;
- 'N.A.' = not available;
- '.. ' = not applicable; and
- '0.0' = less than 0.05%.

### ***Rounding of Figures***

There may be a slight discrepancy between the sum of individual items and the total as shown in the tables owing to rounding.

## Summary Findings

### Population Size and Structure

#### *Population Size*

1. The 1996 Population By-census shows that there were 6 217 556 residents, including 6 016 974 residents present in Hong Kong at the By-census reference moment (i.e. 3:00 a.m. on 15 March 1996) and 200 582 residents temporarily away from Hong Kong. (Table 1)
2. The population present in Hong Kong at the By-census reference moment was 6 121 217, including 6 016 974 residents present in Hong Kong, 83 093 transients and 21 150 Vietnamese migrants. (Table 1)
3. During 1986-1996, population growth was faster in the second half of the period than in the first half. The average annual growth rate of the population was 1.8% during 1991-1996, while that during 1986-1991 was only 0.6%. (Table 2)

#### *Age and Sex Structure*

4. The population grew older during the last ten years. The median age rose from 28 in 1986 to 34 in 1996. This is attributable to the continuously low level of fertility rate and mortality improvement experienced by the population, thus leading to a reduction in the proportion of children aged under 15 and an increase in the proportion of elderly people aged 65 and over. These changes in age structure are discernible by comparing the shape of the population pyramids over time. (Table 3 and Chart 1)
5. The overall dependency ratio decreased. The ratio of the number of persons aged under 15 and those aged 65 and over to 1 000 persons in the 15-64 age group dropped from 442 in 1986 to 401 in 1996. The decline was due to a rapid reduction in child dependency which more than offset a surge in elderly dependency. (Table 4)
6. Sex ratio (i.e. number of males per 1 000 females) of the population dropped from 1 057 in 1986 to 1 000 in 1996. The marked reduction in the sex ratios in the age group 25-44 was probably due to the large increase in female foreign domestic helpers in the period. (Table 5)

### Other Demographic Characteristics

#### *Marital Status*

7. The proportion of the male population aged 15 and over who were married increased gradually from 57% in 1986 to 62% in 1996 and that of the female population increased from 57% in 1986 to 60% in 1991 and remained at about the same level in 1996. The proportion of persons who were divorced/separated increased significantly in relative terms over the last five years. For males, it increased from 1.1% in 1991 to 1.6% in 1996 and for females, from 1.4% to 2.2%. (Table 6)

8. The effect of age structure has to be isolated in analyzing nuptiality. Studying the proportion of the never married in each age group best serves the purpose. Such proportions increased substantially for both males and females in the prime marriageable ages. This suggests a trend towards higher bachelorhood and spinsterhood. (Table 7)

### ***Place of Birth***

9. The proportion of Hong Kong born population remained stable at about 60% over the last ten years. The proportion of China born population decreased from 37% in 1986 to 33% in 1996. (Table 8)

### ***Nationality***

10. In 1996, 59% of the population were British (with right of abode in Hong Kong only) and 31% were Chinese (with place of domicile in Hong Kong). It should be noted that some persons reported a second nationality in the By-census and figures on nationality here refer to the reported first nationality only. (Table 9)

### ***Duration of Residence in Hong Kong***

11. In both 1991 and 1996, about 80% of the population had resided in Hong Kong for ten years or more. (Table 10)

### ***Language/Dialect***

12. Cantonese was the most common language/dialect, spoken by 89% of the population at home in 1996. Another 7% of the population claimed that they could speak Cantonese as another language/dialect. In other words, some 95% of the population could speak Cantonese, about the same as that of 96% in 1991. (Tables 11 and 12)

13. The proportion of the population who could speak English either as the usual language or as another language increased from 32% in 1991 to 38% in 1996. The proportion of the population who could speak Putonghua also increased from 18% in 1991 to 25% in 1996. (Tables 11 and 12)

## **Education**

### ***Educational Attainment***

14. There was a marked improvement in the educational attainment of the population. The proportion of the population with secondary or higher education increased from 57% in 1986 to 68% in 1996. With the rapid expansion of tertiary education in Hong Kong in recent years, the proportion of the population who had tertiary education in degree course increased significantly from 4% in 1986 to 10% in 1996. (Table 13 and Chart 2)

### ***School Attendance***

15. Proportionately, more children of school ages were attending school in 1996 than in 1986. Among children aged 3-16, school attendance was almost universal in 1996. (Table 14)

### ***Field of Education***

16. The most popular field of education reported by those with tertiary education was "Business, commercial and computer studies". The proportion of the population with tertiary education in this field increased from 25% in 1986 to 31% in 1996. "Arts and social science" and "Mechanical, electrical, electronic and marine engineering" were the next two more popular fields of education. (Table 15)

## **The Labour Force**

### ***Labour Force Size and Structure***

17. The labour force recorded a 16% increase from 2 753 800 in 1986 to 3 182 500 in 1996. The overall labour force participation rate dropped from 66% in 1986 to 63% in 1996, while the median age of the labour force increased from 33 in 1986 to 36 in 1996. (Tables 16 and 17)

### ***Labour Force Participation***

18. During the last ten years, the male participation rates decreased in all age groups. The decline was marked for the younger ages 15-24 because of longer schooling, and for the older ages 55 and over because of earlier retirement. In the prime working ages, the decline was marginal. (Chart 3)

19. The female participation rates increased significantly in the prime working ages 25-39. Same as males, there were significant decreases in labour force participation rates of females in the age group 15-24 and the older ages 55 and over. (Chart 3)

### ***Activity Status***

20. The proportion of employees in the working population was steady at about 88%. The proportion of employers grew from 4% in 1986 to 7% in 1996. (Table 18)

### ***Occupation***

21. Over the last five years, the proportion of the working population in the professionals, associate professionals, managers and administrators occupations increased from 23% in 1991 to 29% in 1996. On the other hand, there was a significant decrease in the proportion of the working population in the plant and machine operators and assemblers occupations, from 13% in 1991 to 9% in 1996. (Table 19)

### ***Industry***

22. With a significant decrease in the proportion of the working population in the "Manufacturing" sector from 36% in 1986 to 19% in 1996, "Wholesale, retail and import/export trades, restaurants and hotels" became the largest sector employing 25% of the working population in 1996. "Community, social and personal services" became the second largest sector. Its share in employment increased from 18% in 1986 to 22% in 1996. The proportion of the working population in the "Financing, insurance, real estate and business services" sector also increased from 6% in 1986 to 13% in 1996. (Table 20)

### ***Income from Main Employment***

23. The median monthly income from main employment of the working population was \$9,500. This represents an increase of 269% over that in 1986. Over the same period, the inflation rate as measured by the increase in the Consumer Price Index (A) was 125%. (Table 21)

## **Households**

### ***Number of Domestic Households***

24. The number of domestic households increased by 28% from 1 452 600 in 1986 to 1 855 600 in 1996. The rate of growth was lower in the first half of the period, averaging 1.7% per annum. The growth rate increased to 3.2% per annum in the second half of the period. The number of households increased at a much faster rate than the population. (Table 22)

### ***Household Size***

25. The trend towards smaller household continued but to a lesser extent in the last five years. The average household size decreased from 3.7 in 1986 to 3.4 in 1991 and 3.3 in 1996. The proportion of households with 6 persons and over dropped drastically from 16% in 1986 to 8% in 1996. (Table 23)

### ***Household Composition***

26. More domestic households consisted of one unextended nuclear family, their share having increased from 59% in 1986 to 64% in 1996. The proportion of extended nuclear family households decreased from 14% to 11% during the period. Besides, the proportion of households with two or more family nuclei also decreased. (Table 24)

### ***Household Income***

27. The median monthly household income in 1996 was \$17,500. This represents an increase of 239% over that in 1986. In the same period, the inflation rate as measured by the increase in the Consumer Price Index (A) was 125%. (Table 25)

## **Housing**

### ***Number of Occupied Quarters***

28. Among all occupied quarters, private permanent housing constituted 49% in 1996, increased from 47% in 1986. Public rental housing constituted 37% in 1996, about the same as ten years ago. The share of temporary housing dropped significantly from 8% in 1986 to 2% in 1996. Over the same period, the proportion of subsidized sale flats (mainly the Housing Authority home ownership scheme estates) surged from 4% in 1986 to 11% in 1996. (Table 26)

### ***Population by Type of Housing***

29. In 1996, 47% of the population lived in private permanent housing, while 39% lived in public rental housing. The pattern was relatively stable over the last ten years. The proportion of the population living in subsidized sale flats increased from 4% in 1986 to 11% in 1996, while that in temporary housing dropped from 7% to 2% over the same period. (Table 27)

### ***Domestic Households by Type of Quarters***

30. In 1996, 44% of domestic households were living in private residential flats while 35% were in public rental flats. Both the proportions of domestic households living in rooms/cocklofts/bedspaces in private residential flats and in temporary housing dropped significantly over the last ten years. (Table 28)

### ***Degree of Sharing***

31. The degree of sharing, which is measured by the average number of domestic households in a quarters, decreased from 1.11 in 1986 to 1.05 in 1996. The increase in the degree of sharing in non-domestic housing from 1.12 in 1986 to 1.34 in 1996 was mainly due to the increase in the number of dormitories for university students which had a higher degree of sharing. The degree of sharing in public rental housing marginally exceeded 1 mainly because of the presence of "sheltered housing" where a few elderly people shared a public rental flat. (Table 29)

### ***Tenure of Accommodation***

32. The proportion of owner-occupiers (i.e. domestic households owning the quarters they live in) increased from 35% in 1986 to 44% in 1996. The proportion of sole tenants remained at around 45% over the last ten years. Both sub-letting and co-letting became less common, as reflected by a drastic reduction in the proportion of sub-tenants from 5% in 1986 to 2% in 1996 and for co-tenants, from 6% to 3%. (Table 30)

### ***Household Rent***

33. The median household rent for public rental flats increased by 223% from \$350 in 1986 to \$1,132 in 1996, while that for private residential flats (whole house/flat) by 261% from \$1,800 to \$6,500. (Table 31)

## **Geographical Distribution and Internal Migration**

### ***Geographical Distribution***

34. There was a substantial redistribution of the population during the last ten years. The New Territories had the largest share of the population in 1996. The proportion of the population in the New Territories increased markedly from 35% in 1986 to 47% in 1996. During the same period, the proportion of the population in Kowloon dropped from 43% to 32% and that on Hong Kong Island remained stable at around 21%. (Table 32)

35. All districts in the New Territories recorded population growth in the last ten years. Owing to the development of the Tseung Kwan O new town, Sai Kung had the highest growth rate among all districts (329%), followed by Tai Po (103%). In Kowloon, population decreased in all districts. On Hong Kong Island, the population in Wan Chai decreased while those in Eastern and Southern increased. (Table 33)

### *Population Density*

36. Population density, as measured by the number of residents per square kilometre of land area, increased from 5 225 in 1986 to 5 796 in 1996 for the territory as a whole. The most densely populated district was Kwun Tong, with a density of 53 081 residents per square kilometre in 1996. The density in both Yau Tsim Mong and Sham Shui Po decreased significantly due to reclamation. The population densities in the New Territories was much lower than those in the older districts. (Table 34)

### *Internal Migration*

37. Altogether 1 138 400 persons, representing 19% of the population aged 5 and over, had migrated internally in the past five years - they lived in an area five years ago (i.e. area of original residence) that was different from the one in which they were enumerated in the By-census (i.e. area of current residence). About 54% of the population who had migrated internally were destined for the new towns in the New Territories. Of those who had migrated internally, Kowloon was the main area of original residence and 41% originated there. The largest proportion of internal migration was between the new towns in the New Territories, accounting for 23% of all internal migration. Internal migration from Kowloon to the new towns was also substantial, accounting for 22% of the total. (Table 35)

### *Place of Work*

38. About 34% of the working population worked in Kowloon and 30% worked on Hong Kong Island. About 57% of the population worked in the same area as that of their residence. Of persons not working in the area of their residence, those who had their place of residence in the new towns of the New Territories and their place of work in Kowloon constituted the largest proportion, accounting for 11% of the total working population. (Table 36)

### *Place of Study*

39. Among persons studying full-time in schools or educational institutions in Hong Kong, about 85% attended schools in the same area as that of their residence. Of those not attending schools in the area of their residence, those who had their place of residence in the new towns of the New Territories and their place of study in Kowloon constituted the largest proportion, accounting for 6% of the studying population. (Table 37)

# Summary Tables



# **Population Size and Structure**

## Population Size

**Table 1 Population Present in Hong Kong and Resident Population, 1996**

<i>Category</i>	<i>Population Present in Hong Kong<sup>(1)</sup></i>	<i>Resident Population</i>
Residents present in Hong Kong	6 016 974	6 016 974
Residents temporarily away from Hong Kong	..	200 582
Transients	83 093	..
Vietnamese migrants <sup>(2)</sup>	21 150	..
Total	6 121 217	6 217 556

- Notes : (1) All persons who were present in Hong Kong at the 1996 Population By-census reference moment.  
 (2) Vietnamese migrants include Vietnamese refugees; Vietnamese migrants having been screened out and those pending determination of refugee status; ex-China Vietnamese illegal immigrants; Vietnamese migrants rescued by ocean-going vessels; and children born in Hong Kong to the above categories of Vietnamese migrants.

**Table 2 Resident Population and Annual Growth Rates, 1971 - 1996**

<i>Census/By-census</i>	<i>Resident Population</i>	<i>Net Increase</i>	<i>Average Annual Growth Rate(%)</i>
1971	3 936 630 <sup>(1)</sup>	..	..
1976	4 402 990 <sup>(1)</sup>	466 360	2.1
1981	5 109 812 <sup>(2)</sup>	706 822	3.3
1986	5 495 488 <sup>(3)</sup>	385 676	1.5
1991	5 674 114 <sup>(4)</sup>	178 626	0.6
1996	6 217 556 <sup>(5)</sup>	543 442	1.8

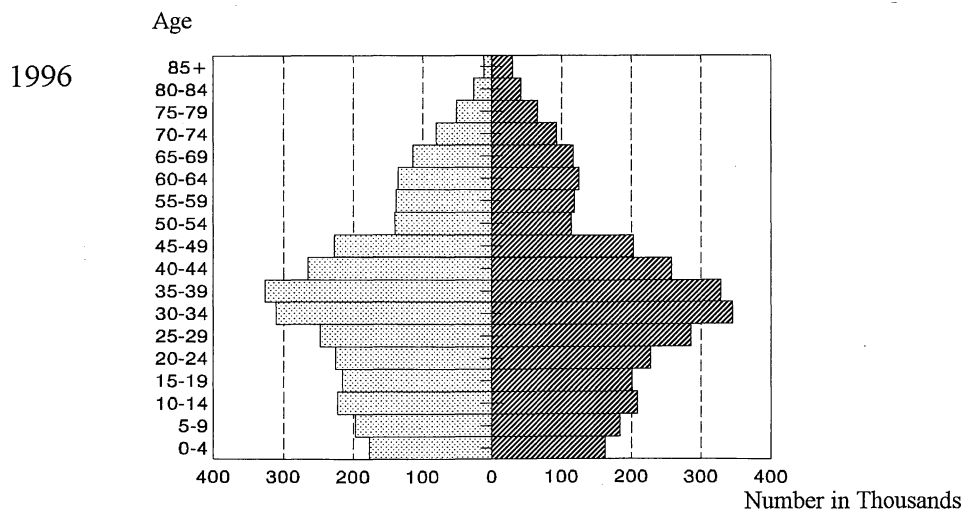
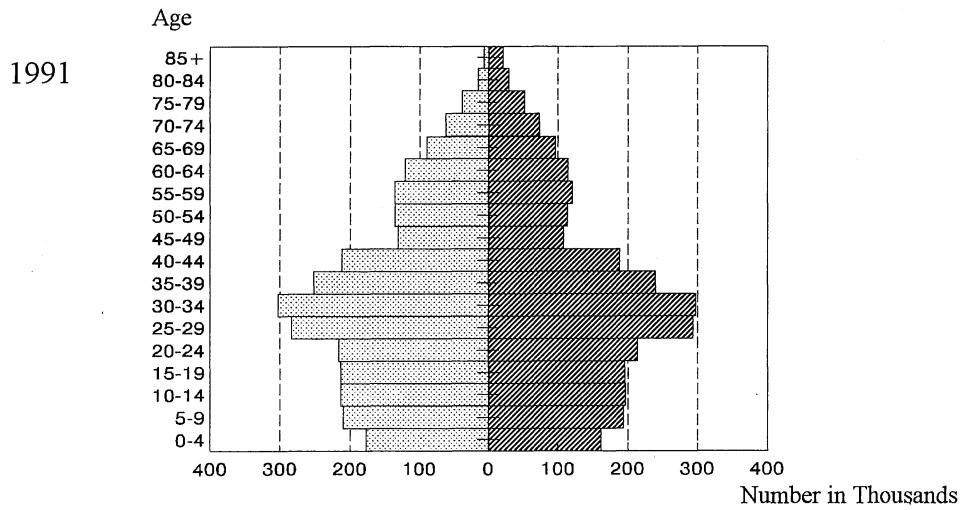
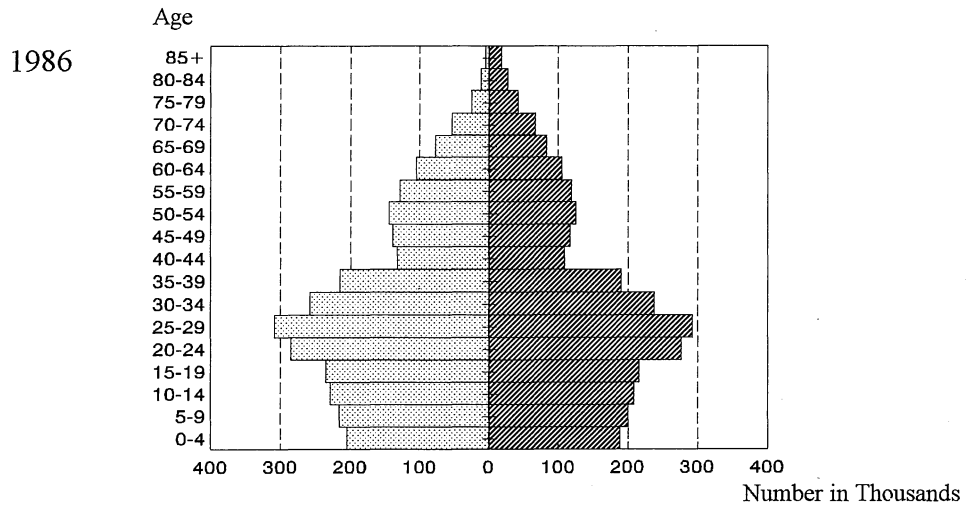
- Notes : (1) Resident population did not include residents temporarily away from Hong Kong at the time of the 1971 Census conducted in February/March 1971 and the 1976 By-census conducted in July/August 1976.  
 (2) The figure includes 123 252 residents temporarily away from Hong Kong at the time of the 1981 Census conducted in March 1981.  
 (3) The figure includes 99 491 residents temporarily away from Hong Kong at the time of the 1986 By-census conducted in March 1986.  
 (4) The figure includes 151 833 residents temporarily away from Hong Kong at the time of the 1991 Census conducted in March 1991.  
 (5) The figure includes 200 582 residents temporarily away from Hong Kong at the time of the 1996 By-census conducted in March 1996.

## Age and Sex Structure

**Table 3 Population by Sex and Age, 1986, 1991 and 1996**

<i>Age Group</i>	<i>1986</i>		<i>1991</i>		<i>1996</i>	
	<i>Number</i>	<i>%</i>	<i>Number</i>	<i>%</i>	<i>Number</i>	<i>%</i>
<b>Male</b>						
Under 15	649 638	23.4	599 044	21.3	596 253	19.2
15-24	520 089	18.8	429 719	15.3	440 644	14.2
25-34	566 245	20.4	586 577	20.9	557 348	17.9
35-44	348 066	12.6	462 230	16.4	591 393	19.0
45-54	283 370	10.2	266 504	9.5	366 214	11.8
55-64	233 272	8.4	256 042	9.1	273 433	8.8
65 and over	171 784	6.2	211 875	7.5	282 822	9.1
<b>Total</b>	<b>2 772 464</b>	<b>100.0</b>	<b>2 811 991</b>	<b>100.0</b>	<b>3 108 107</b>	<b>100.0</b>
<b>Female</b>						
Under 15	597 309	22.8	552 872	20.4	554 785	17.8
15-24	492 770	18.8	410 122	15.1	428 867	13.8
25-34	531 583	20.3	591 711	21.8	631 076	20.3
35-44	299 336	11.4	428 802	15.8	587 129	18.9
45-54	241 864	9.2	221 154	8.2	317 355	10.2
55-64	223 913	8.5	235 464	8.7	243 504	7.8
65 and over	236 758	9.0	270 165	10.0	346 733	11.2
<b>Total</b>	<b>2 623 533</b>	<b>100.0</b>	<b>2 710 290</b>	<b>100.0</b>	<b>3 109 449</b>	<b>100.0</b>
<b>Both Sexes</b>						
Under 15	1 246 947	23.1	1 151 916	20.9	1 151 038	18.5
15-24	1 012 859	18.8	839 841	15.2	869 511	14.0
25-34	1 097 828	20.3	1 178 288	21.4	1 188 424	19.1
35-44	647 402	12.0	891 032	16.1	1 178 522	19.0
45-54	525 234	9.7	487 658	8.8	683 569	11.0
55-64	457 185	8.5	491 506	8.9	516 937	8.3
65 and over	408 542	7.6	482 040	8.7	629 555	10.1
<b>Total</b>	<b>5 395 997</b>	<b>100.0</b>	<b>5 522 281</b>	<b>100.0</b>	<b>6 217 556</b>	<b>100.0</b>
			<i>Median Age</i>			
Male	28		31		34	
Female	28		31		34	
Both sexes	28		31		34	

**Chart 1 Population Pyramids, 1986, 1991 and 1996**



Male Female

**Table 4 Age Dependency Ratios, 1986, 1991 and 1996**

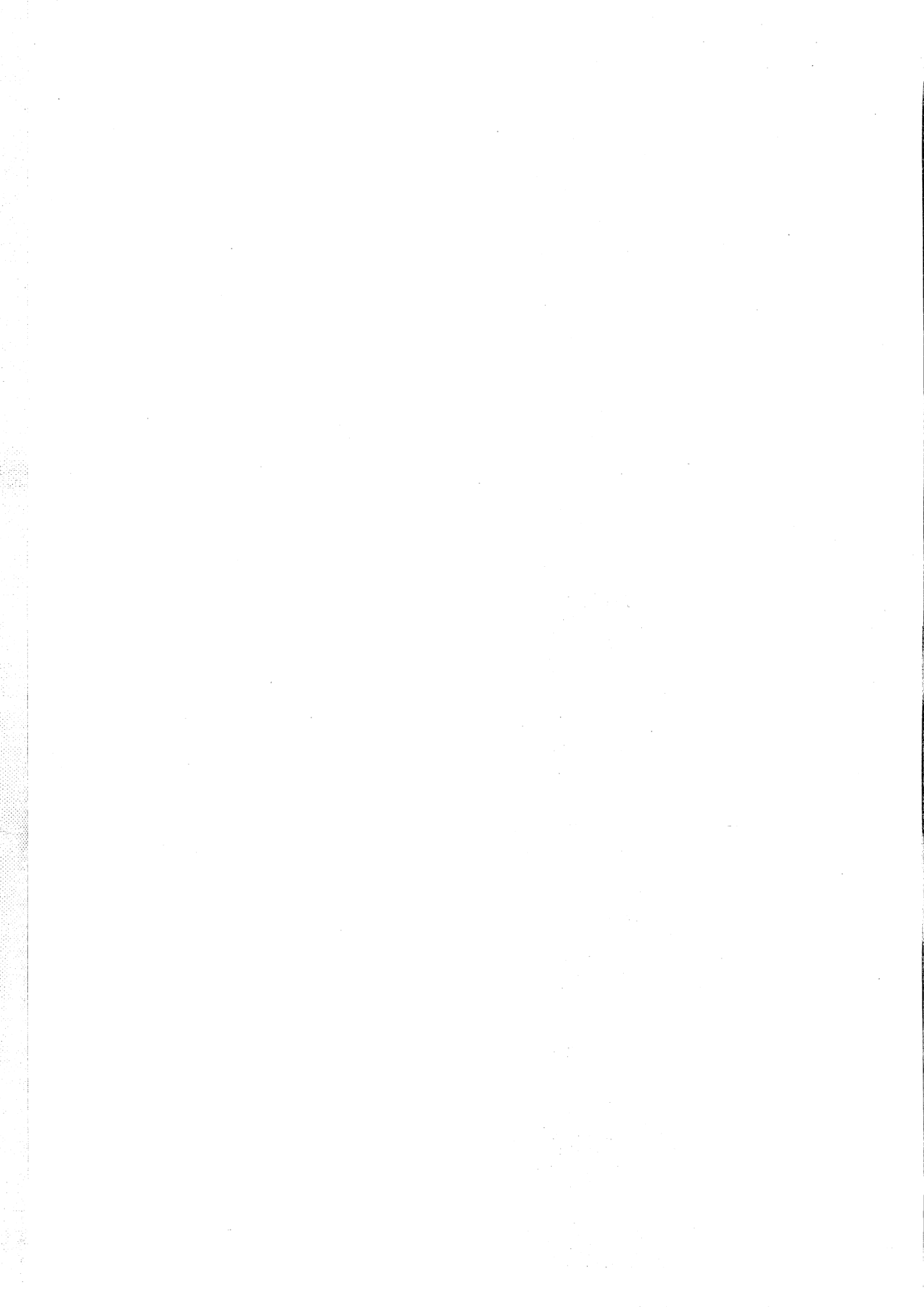
<i>Age Dependency Ratio</i>	<i>1986</i>	<i>1991</i>	<i>1996</i>
Child dependency ratio <sup>(1)</sup>	333	296	259
Elderly dependency ratio <sup>(2)</sup>	109	124	142
Overall dependency ratio <sup>(3)</sup>	442	420	401

Notes : (1) The number of persons aged under 15 per 1 000 persons in the 15-64 age group.  
 (2) The number of persons aged 65 and over per 1 000 persons in the 15-64 age group.  
 (3) The number of persons aged under 15 and aged 65 and over per 1 000 persons in the 15-64 age group.

**Table 5 Sex Ratios by Age, 1986, 1991 and 1996**

<i>Age Group</i>	<i>Sex Ratio<sup>(1)</sup></i>		
	<i>1986</i>	<i>1991</i>	<i>1996</i>
Under 15	1 088	1 084	1 075
15-24	1 055	1 048	1 027
25-34	1 065	991	883
35-44	1 163	1 078	1 007
45-54	1 172	1 205	1 154
55-64	1 042	1 087	1 123
65 and over	726	784	816
Overall	1 057	1 038	1 000

Note : (1) The number of males per 1 000 females in the respective age group.



## **Other Demographic Characteristics**

## Marital Status

**Table 6 Population Aged 15 and Over by Sex and Marital Status, 1986, 1991 and 1996**

<i>Marital Status</i>	<i>1986</i>		<i>1991</i>		<i>1996</i>	
	<i>Number</i>	<i>%</i>	<i>Number</i>	<i>%</i>	<i>Number</i>	<i>%</i>
<b>Male</b>						
Never married	843 697	39.7	807 443	36.5	858 341	34.2
Now married	1 207 549	56.9	1 333 049	60.2	1 557 211	62.0
Widowed	50 491	2.4	48 584	2.2	55 338	2.2
Divorced/Separated	21 089	1.0	23 871	1.1	40 964	1.6
<b>Total</b>	<b>2 122 826</b>	<b>100.0</b>	<b>2 212 947</b>	<b>100.0</b>	<b>2 511 854</b>	<b>100.0</b>
<b>Female</b>						
Never married	616 955	30.4	626 554	29.0	737 926	28.9
Now married	1 162 301	57.4	1 290 860	59.8	1 515 574	59.3
Widowed	225 380	11.1	210 390	9.8	244 866	9.6
Divorced/Separated	21 588	1.1	29 614	1.4	56 298	2.2
<b>Total</b>	<b>2 026 224</b>	<b>100.0</b>	<b>2 157 418</b>	<b>100.0</b>	<b>2 554 664</b>	<b>100.0</b>

**Table 7 Proportion of Never Married Population Aged 15-44 by Sex and Age, 1986, 1991 and 1996**

<i>Age Group</i>	<i>Proportion of Never Married (%)</i>		
	<i>1986</i>	<i>1991</i>	<i>1996</i>
<b>Male</b>			
15-19	99.4	99.4	99.2
20-24	92.2	93.5	94.0
25-29	61.9	67.0	70.9
30-34	29.5	33.1	38.3
35-39	14.2	16.0	18.2
40-44	8.6	9.9	10.1
<b>Female</b>			
15-19	97.9	98.4	98.3
20-24	78.7	82.9	85.3
25-29	37.5	45.5	52.0
30-34	14.5	19.8	26.5
35-39	7.4	10.4	14.6
40-44	3.8	6.8	9.0

## Place of Birth

**Table 8 Population by Place of Birth, 1986, 1991 and 1996**

<i>Place of Birth</i>	<i>1986</i>		<i>1991</i>		<i>1996</i>	
	<i>Number</i>	<i>%</i>	<i>Number</i>	<i>%</i>	<i>Number</i>	<i>%</i>
Hong Kong	3 203 165	59.4	3 299 597	59.8	3 749 332	60.3
China	1 999 185	37.0	1 967 508	35.6	2 026 212	32.6
Elsewhere	193 647	3.6	255 176	4.6	442 012	7.1
<b>Total</b>	<b>5 395 997</b>	<b>100.0</b>	<b>5 522 281</b>	<b>100.0</b>	<b>6 217 556</b>	<b>100.0</b>

# Nationality

**Table 9 Population by Nationality, 1991 and 1996**

<i>Nationality</i>	<i>1991</i>		<i>1996</i>	
	<i>Number<sup>(1)</sup></i>	<i>%</i>	<i>Number<sup>(1)</sup></i>	<i>%</i>
British (with right of abode in Hong Kong only)	3 294 444	59.6	3 681 898	59.2
British (with right of abode in places outside Hong Kong)	68 502	1.2	175 395	2.8
Chinese (place of domicile - Hong Kong)	1 897 101	34.4	1 941 569	31.2
Chinese (place of domicile - other than Hong Kong)	48 029	0.9	64 717	1.0
Filipino	64 658	1.2	120 730	1.9
Canadian	15 135	0.3	32 515	0.5
United States American	18 383	0.3	28 946	0.5
Indian, Pakistani, Bangladeshi and Sri Lankan	14 329	0.3	20 955	0.3
Portugese	18 488	0.3	20 738	0.3
Australian	10 432	0.2	20 209	0.3
Japanese	10 850	0.2	19 010	0.3
Thai	11 787	0.2	15 993	0.3
Others	50 143	0.9	74 881	1.2
<b>Total</b>	<b>5 522 281</b>	<b>100.0</b>	<b>6 217 556</b>	<b>100.0</b>

Note : (1) The figures refer to the first nationalities reported by respondents in the Census/By-census. Some persons claimed a second nationality, but data on second nationalities are not included in this table.

## Duration of Residence in Hong Kong

**Table 10 Population by Duration of Residence in Hong Kong and Place of Birth, 1991 and 1996**

<i>Duration of Residence (Year)</i>	<i>Place of Birth</i>							
	<i>Hong Kong</i>		<i>China</i>		<i>Elsewhere</i>		<i>Total</i>	
	<i>Number</i>	<i>%</i>	<i>Number</i>	<i>%</i>	<i>Number</i>	<i>%</i>	<i>Number</i>	<i>%</i>
<i>1991</i>								
Less than 1	63 097	1.1	36 104	0.7	35 500	0.6	134 701	2.4
1 - 3	196 861	3.6	81 142	1.5	71 403	1.3	349 406	6.3
4 - 6	206 922	3.7	82 471	1.5	31 949	0.6	321 342	5.8
7 - 9	231 600	4.2	91 794	1.7	18 664	0.3	342 058	6.2
10 and over	2 601 117	47.1	1 675 997	30.3	97 660	1.8	4 374 774	79.2
<b>Total</b>	<b>3 299 597</b>	<b>59.8</b>	<b>1 967 508</b>	<b>35.6</b>	<b>255 176</b>	<b>4.6</b>	<b>5 522 281</b>	<b>100.0</b>
<i>1996</i>								
Less than 1	61 442	1.0	33 748	0.5	53 530	0.9	148 720	2.4
1 - 3	205 720	3.3	103 265	1.7	124 473	2.0	433 458	7.0
4 - 6	207 302	3.3	95 621	1.5	66 796	1.1	369 719	5.9
7 - 9	211 822	3.4	87 492	1.4	25 969	0.4	325 283	5.2
10 and over	3 063 046	49.3	1 706 086	27.4	171 244	2.8	4 940 376	79.5
<b>Total</b>	<b>3 749 332</b>	<b>60.3</b>	<b>2 026 212</b>	<b>32.6</b>	<b>442 012</b>	<b>7.1</b>	<b>6 217 556</b>	<b>100.0</b>

## Language/Dialect

**Table 11 Population<sup>(1)</sup> Aged 5 and Over by Usual Language/Dialect, 1991 and 1996**

<i>Usual Language/Dialect</i>	<i>1991</i>		<i>1996</i>	
	<i>Number</i>	<i>%</i>	<i>Number</i>	<i>%</i>
Cantonese	4 583 322	88.7	5 196 240	88.7
Putonghua	57 577	1.1	65 892	1.1
Other Chinese dialects	364 694	7.0	340 222	5.8
English	114 084	2.2	184 308	3.1
Others	49 232	1.0	73 879	1.3
<b>Total</b>	<b>5 168 909</b>	<b>100.0</b>	<b>5 860 541</b>	<b>100.0</b>

Note : (1) The population excludes dumb persons.

**Table 12 Proportion of Population<sup>(1)</sup> Aged 5 and Over Able to Speak Selected Languages/Dialects, 1991 and 1996**

<i>Language/Dialect</i>	<i>Population Aged 5 and Over<sup>(1)</sup> (%)</i>					
	<i>As the Usual Language/Dialect</i>		<i>As Another Language/Dialect</i>		<i>Total</i>	
	<i>1991</i>	<i>1996</i>	<i>1991</i>	<i>1996</i>	<i>1991</i>	<i>1996</i>
Cantonese	88.7	88.7	7.1	6.6	95.8	95.2
English	2.2	3.1	29.4	34.9	31.6	38.1
Putonghua	1.1	1.1	17.0	24.2	18.1	25.3
Chiu Chau	1.4	1.1	4.0	3.9	5.4	5.0
Hakka	1.6	1.2	3.7	3.6	5.3	4.9
Fukien (including Taiwanese)	1.9	1.9	1.7	2.0	3.6	3.9
Sze Yap	0.4	0.3	1.5	1.2	1.9	1.4
Shanghainese	0.7	0.5	1.1	1.1	1.8	1.6
Filipino	0.1	0.2	1.0	1.6	1.1	1.8
Japanese	0.2	0.3	0.8	1.0	1.0	1.2

Note : (1) The population excludes dumb persons.

# **Education**

# Educational Attainment

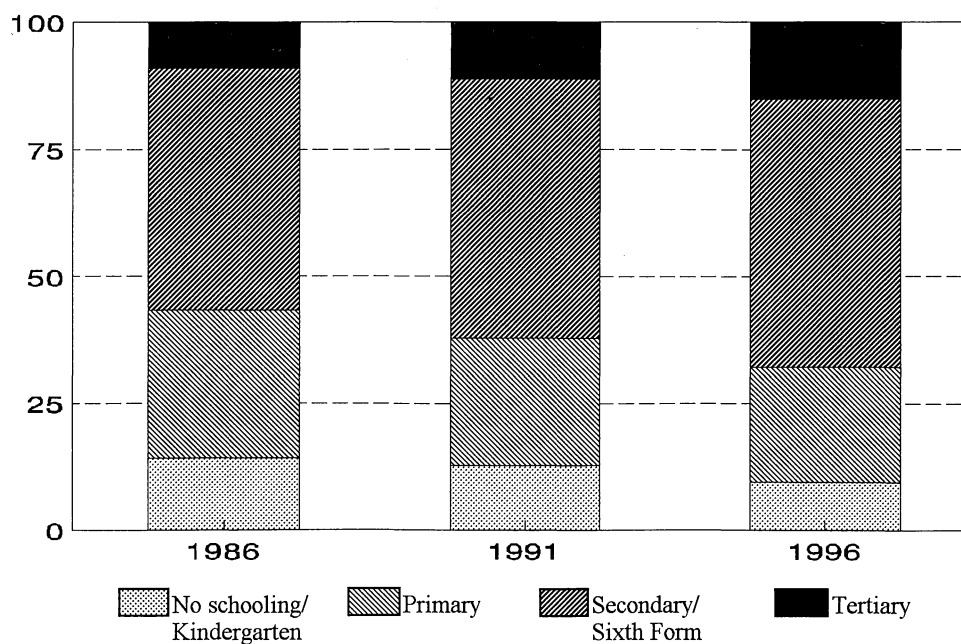
**Table 13 Population Aged 15 and Over by Educational Attainment, 1986, 1991 and 1996**

<i>Educational Attainment</i>	<i>1986</i>		<i>1991</i>		<i>1996</i>	
	<i>Number</i>	<i>%</i>	<i>Number</i>	<i>%</i>	<i>Number</i>	<i>%</i>
No schooling/Kindergarten	585 891	14.1	557 297	12.8	480 852	9.5
Primary	1 212 914	29.2	1 100 599	25.2	1 146 882	22.6
Secondary <sup>(1)</sup>	1 779 178	43.0	2 007 001	45.8	2 361 456	46.6
Sixth Form <sup>(1)</sup>	194 530	4.7	214 577	4.9	308 808	6.1
Tertiary						
Non-degree course	196 392	4.7	234 912	5.4	243 004	4.8
Degree course	180 145	4.3	255 979	5.9	525 516	10.4
<b>Total</b>	<b>4 149 050</b>	<b>100.0</b>	<b>4 370 365</b>	<b>100.0</b>	<b>5 066 518</b>	<b>100.0</b>

Note: (1) Includes equivalent educational attainment.

**Chart 2 Percentage Distribution of Population Aged 15 and Over by Educational Attainment, 1986, 1991 and 1996**

Percentage



## School Attendance

**Table 14 School Attendance Rates of Population Aged 3-18 by Age, 1986, 1991 and 1996**

<i>Age Group</i>	<i>School Attendance Rate (%)<sup>(1)</sup></i>		
	<i>1986</i>	<i>1991</i>	<i>1996</i>
3 - 5	92	95	95
6 - 11	99	100	100
12 - 16	93	94	96
17 - 18	56	58	64

Note : (1) The percentage of population studying full-time in school or educational institution in the respective age groups.

## Field of Education

**Table 15 Population with Tertiary Education by Field of Education, 1986, 1991 and 1996**

<i>Field of Education</i>	<i>1986</i>		<i>1991</i>		<i>1996</i>	
	<i>Number</i>	<i>%</i>	<i>Number</i>	<i>%</i>	<i>Number</i>	<i>%</i>
Business, commercial and computer studies	94 045	25.1	131 772	26.9	241 021	31.4
Arts and social science	72 079	19.1	92 895	18.9	142 146	18.5
Mechanical, electrical, electronic and marine engineering	49 455	13.1	67 152	13.7	90 778	11.8
Architecture and construction engineering	27 958	7.4	35 462	7.2	55 280	7.2
Medical and health related studies	33 845	9.0	38 322	7.8	52 120	6.8
Pure science	25 739	6.8	33 969	6.9	52 095	6.8
Education	33 516	8.9	35 368	7.2	46 815	6.1
Textile, design and other industrial technology	14 903	4.0	19 806	4.0	27 566	3.6
Other fields	24 997	6.6	36 145	7.4	60 699	7.9
Total	376 537	100.0	490 891	100.0	768 520	100.0



# **The Labour Force**

## Labour Force Size and Structure

**Table 16 Economically Active Population and Labour Force Participation Rates, 1986, 1991 and 1996**

<i>Sex</i>	<i>1986</i>	<i>1991</i>	<i>1996</i>
Population aged 15 and over			
Male	2 122 826	2 212 947	2 511 854
Female	2 026 224	2 157 418	2 554 664
Both sexes	4 149 050	4 370 365	5 066 518
Economically active population (or labour force) aged 15 and over			
Male	1 716 411	1 742 271	1 925 095
Female	1 037 437	1 068 731	1 257 402
Both sexes	2 753 848	2 811 002	3 182 497
Labour force participation rate <sup>(1)</sup>			
Male	80.9	78.7	76.6
Female	51.2	49.5	49.2
Both sexes	66.4	64.3	62.8

Note : (1) The percentage of economically active population in the population aged 15 and over.

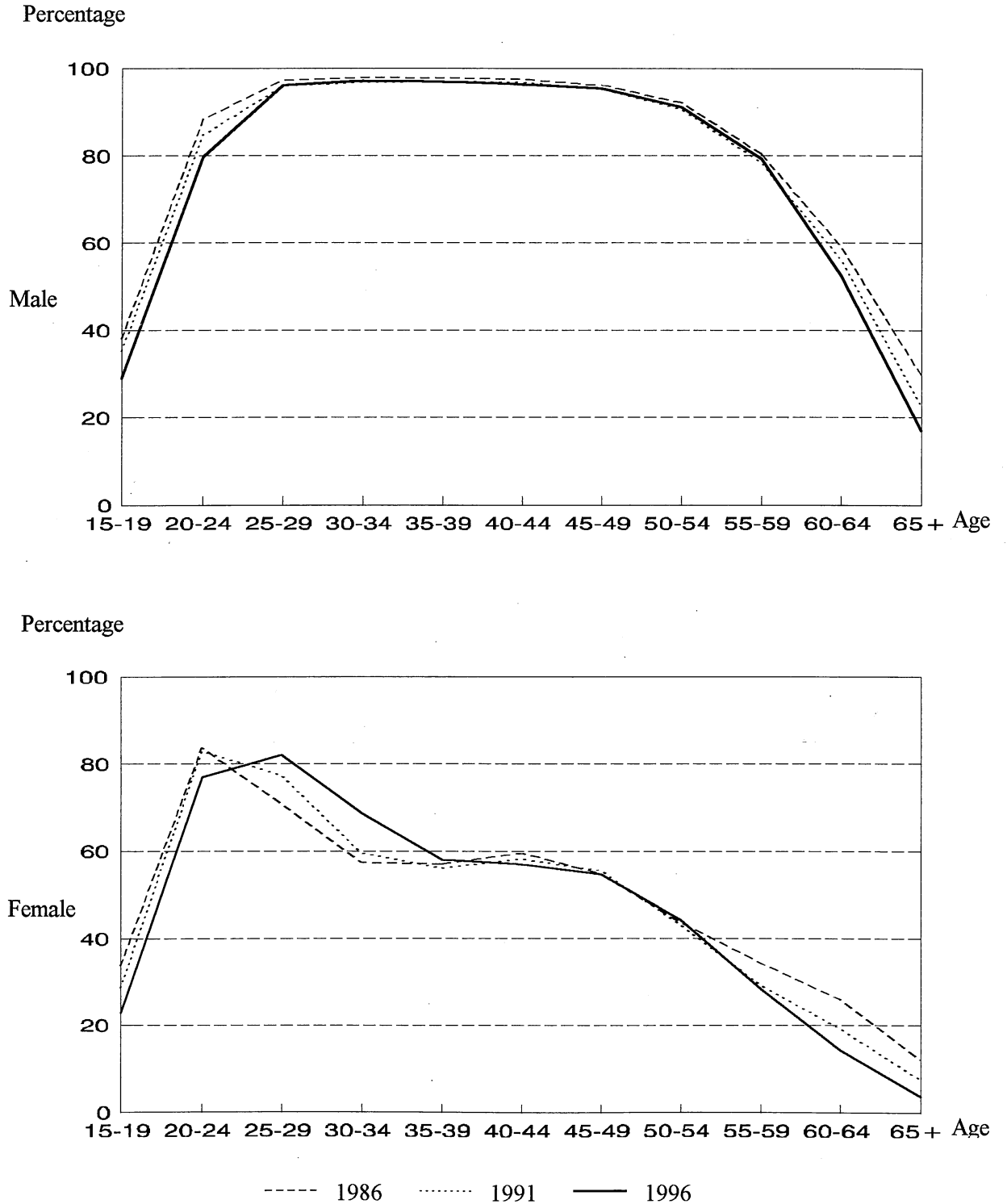
**Table 17 Economically Active Population by Sex and Age, 1986, 1991 and 1996**

<i>Age group</i>	<i>1986</i>		<i>1991</i>		<i>1996</i>	
	<i>Number</i>	<i>%</i>	<i>Number</i>	<i>%</i>	<i>Number</i>	<i>%</i>
<b>Male</b>						
15 - 24	340 782	19.9	258 560	14.8	242 099	12.6
25 - 34	552 532	32.2	566 005	32.5	539 111	28.0
35 - 44	340 086	19.8	448 037	25.7	571 833	29.7
45 - 54	266 605	15.5	247 667	14.2	343 295	17.8
55 - 64	165 355	9.6	174 078	10.0	180 621	9.4
65 and over	51 051	3.0	47 924	2.8	48 136	2.5
<b>Total</b>	<b>1 716 411</b>	<b>100.0</b>	<b>1 742 271</b>	<b>100.0</b>	<b>1 925 095</b>	<b>100.0</b>
<b>Female</b>						
15 - 24	304 059	29.3	233 515	21.8	220 786	17.6
25 - 34	344 431	33.2	404 678	37.8	471 904	37.5
35 - 44	173 397	16.7	244 227	22.9	338 337	26.9
45 - 54	118 701	11.4	108 631	10.2	161 571	12.8
55 - 64	68 087	6.6	57 476	5.4	51 552	4.1
65 and over	28 762	2.8	20 204	1.9	13 252	1.1
<b>Total</b>	<b>1 037 437</b>	<b>100.0</b>	<b>1 068 731</b>	<b>100.0</b>	<b>1 257 402</b>	<b>100.0</b>
<b>Both sexes</b>						
15 - 24	644 841	23.4	492 075	17.5	462 885	14.5
25 - 34	896 963	32.6	970 683	34.6	1 011 015	31.8
35 - 44	513 483	18.6	692 264	24.6	910 170	28.6
45 - 54	385 306	14.0	356 298	12.7	504 866	15.9
55 - 64	233 442	8.5	231 554	8.2	232 173	7.3
65 and over	79 813	2.9	68 128	2.4	61 388	1.9
<b>Total</b>	<b>2 753 848</b>	<b>100.0</b>	<b>2 811 002</b>	<b>100.0</b>	<b>3 182 497</b>	<b>100.0</b>
<i>Median Age<sup>(1)</sup></i>						
Male	34.3		35.9		37	
Female	30.3		32.1		33	
Both sexes	32.9		34.4		36	

Note : (1) Median figures for 1996 are compiled using individual data, whereas those for previous years are compiled using grouped data.

# Labour Force Participation

Chart 3 Labour Force Participation Rates by Sex and Age, 1986, 1991 and 1996



## Activity Status

**Table 18 Working Population by Activity Status, 1986, 1991 and 1996**

<i>Activity Status</i>	<i>1986</i>		<i>1991</i>		<i>1996</i>	
	<i>Number</i>	<i>%</i>	<i>Number</i>	<i>%</i>	<i>Number</i>	<i>%</i>
Self-employed	172 876	6.5	145 481	5.4	127 461	4.2
Employers	111 613	4.2	152 943	5.6	204 414	6.7
Employees <sup>(1)</sup>	2 309 706	87.4	2 383 159	87.8	2 684 589	88.2
Unpaid family workers	49 078	1.9	33 520	1.2	27 234	0.9
Total	2 643 273	100.0	2 715 103	100.0	3 043 698	100.0

Note: (1) The figures include outworkers and student workers.

## Occupation

**Table 19 Working Population by Occupation, 1991 and 1996**

<i>Occupation</i>	<i>1991</i>		<i>1996</i>	
	<i>Number</i>	<i>%</i>	<i>Number</i>	<i>%</i>
Managers and administrators	249 247	9.2	369 323	12.1
Professionals	99 331	3.7	151 591	5.0
Associate professionals	279 909	10.3	369 132	12.1
Clerks	431 651	15.9	512 719	16.8
Service workers and shop sales workers	359 319	13.2	419 721	13.8
Craft and related workers	397 992	14.7	373 143	12.3
Plant and machine operators and assemblers	365 826	13.5	259 909	8.5
Elementary occupations	503 832	18.5	564 682	18.6
Skilled agricultural and fishery workers; armed forces and occupations not classifiable	27 996	1.0	23 478	0.8
Total	2 715 103	100.0	3 043 698	100.0

# Industry

**Table 20 Working Population by Industry, 1986, 1991 and 1996**

<i>Industry</i>	<i>1986</i>		<i>1991</i>		<i>1996</i>	
	<i>Number</i>	<i>%</i>	<i>Number</i>	<i>%</i>	<i>Number</i>	<i>%</i>
Manufacturing	946 653	35.8	768 121	28.2	574 867	18.9
Construction	164 268	6.2	187 851	6.9	245 440	8.1
Wholesale, retail and import/export trades, restaurants and hotels	589 918	22.3	611 386	22.5	757 239	24.9
Transport, storage and communication	210 367	8.0	265 686	9.8	330 974	10.9
Financing, insurance, real estate and business services	169 967	6.4	287 168	10.6	408 686	13.4
Community, social and personal services	486 167	18.4	539 123	19.9	680 048	22.3
Others <sup>(1)</sup>	75 933	2.9	55 768	2.1	46 444	1.5
<b>Total</b>	<b>2 643 273</b>	<b>100.0</b>	<b>2 715 103</b>	<b>100.0</b>	<b>3 043 698</b>	<b>100.0</b>

Note : (1) "Others" include such industries as "Agriculture and fishing", "Mining and quarrying", "Electricity, gas and water" and industrial activities inadequately described or unclassifiable.

## Income from Main Employment

**Table 21 Working Population<sup>(1)</sup> by Monthly Income from Main Employment, 1986, 1991 and 1996**

<i>Monthly Income (HK\$)</i>	<i>1986</i>		<i>1991</i>		<i>1996</i>	
	<i>Number</i>	<i>%</i>	<i>Number</i>	<i>%</i>	<i>Number</i>	<i>%</i>
Under 1,000	165 219	6.4	91 184	3.4	31 447	1.0
1,000 - 1,999	564 612	21.8	91 431	3.4	26 154	0.9
2,000 - 3,999	1 248 648	48.1	557 366	20.8	242 429	8.0
4,000 - 5,999	336 667	13.0	794 962	29.6	316 331	10.5
6,000 - 7,999	113 535	4.4	461 003	17.2	478 408	15.9
8,000 - 9,999	55 339	2.1	221 526	8.3	476 114	15.8
10,000 - 14,999	57 075	2.2	242 996	9.1	668 722	22.2
15,000 - 19,999	21 240	0.8	84 154	3.1	295 968	9.8
20,000 - 24,999	13 142	0.5	46 873	1.7	166 805	5.5
25,000 - 39,999	11 116	0.4	49 529	1.9	171 238	5.7
40,000 and over	7 602	0.3	40 559	1.5	142 848	4.7
<b>Total</b>	<b>2 594 195</b>	<b>100.0</b>	<b>2 681 583</b>	<b>100.0</b>	<b>3 016 464</b>	<b>100.0</b>
<b>Median Monthly Income (HK\$)</b>						
	2,573		5,170		9,500	

Note : (1) In this table, the working population excludes unpaid family workers.



# Households

## Number of Domestic Households

**Table 22 Domestic Households, 1971 - 1996**

<i>Year</i>	<i>Number of Domestic Households</i>	<i>Average Annual Growth Rate (%)</i>	
		<i>Domestic Households</i>	<i>Population</i>
1971	857 008	..	..
1976	1 024 680	3.4	2.1
1981	1 244 738	4.3	3.3
1986	1 452 576	3.1	1.5
1991	1 582 215	1.7	0.6
1996	1 855 553	3.2	1.8

## Household Size

**Table 23 Domestic Households by Household Size, 1986, 1991 and 1996**

<i>Household Size</i>	<i>1986</i>		<i>1991</i>		<i>1996</i>		
	<i>Number</i>	<i>%</i>	<i>Number</i>	<i>%</i>	<i>Number</i>	<i>%</i>	
1	214 921	14.8	225 930	14.3	276 906	14.9	
2	237 177	16.3	290 585	18.4	356 969	19.2	
3	251 507	17.3	307 558	19.4	372 574	20.1	
4	299 050	20.6	359 904	22.7	445 768	24.0	
5	217 838	15.0	225 933	14.3	251 093	13.5	
6 and over	232 083	16.0	172 305	10.9	152 243	8.2	
Total	1 452 576	100.0	1 582 215	100.0	1 855 553	100.0	
			<i>Average household size</i>				
			3.7	3.4	3.3		

## Household Composition

**Table 24 Domestic Households by Household Composition, 1986, 1991 and 1996**

<i>Household Composition<sup>(1)</sup></i>	<i>1986</i>		<i>1991</i>		<i>1996</i>	
	<i>Number</i>	<i>%</i>	<i>Number</i>	<i>%</i>	<i>Number</i>	<i>%</i>
One person	186 841	12.9	233 923	14.8	276 906	14.9
One unextended nuclear family	860 067	59.2	975 498	61.6	1 179 596	63.6
One vertically extended nuclear family	173 107	11.9	169 543	10.7	183 867	9.9
One horizontally extended nuclear family	31 173	2.1	28 813	1.8	23 071	1.2
Two or more nuclear families	89 837	6.2	75 185	4.8	89 503	4.8
Related persons forming no nuclear family	69 074	4.8	67 750	4.3	62 044	3.3
Unrelated persons	30 724	2.1	31 503	2.0	40 566	2.2
Households composed only of persons who do not usually live there	11 753	0.8	..	..	..	..
<b>Total</b>	<b>1 452 576</b>	<b>100.0</b>	<b>1 582 215</b>	<b>100.0</b>	<b>1 855 553</b>	<b>100.0</b>

Note : (1) For the 1991 Population Census, household composition was derived based on the relationship of all persons who were found in the household at the Census reference moment. For the 1986 and 1996 By-censuses, it was based on the relationship of all persons who usually lived in the household.

## Household Income

**Table 25 Domestic Households by Monthly Household Income, 1986, 1991 and 1996**

<i>Monthly Household Income (HK\$)</i>	<i>1986</i>		<i>1991</i>		<i>1996</i>	
	<i>Number</i>	<i>%</i>	<i>Number</i>	<i>%</i>	<i>Number</i>	<i>%</i>
Under 2,000	141 289	9.7	75 552	4.8	55 597	3.0
2,000 - 3,999	368 884	25.4	115 236	7.3	68 272	3.7
4,000 - 5,999	340 871	23.5	202 511	12.8	75 595	4.1
6,000 - 7,999	209 360	14.4	218 388	13.8	105 639	5.7
8,000 - 9,999	125 631	8.6	181 846	11.5	136 577	7.4
10,000 - 14,999	146 199	10.1	314 379	19.9	324 001	17.5
15,000 - 19,999	53 412	3.7	176 406	11.1	269 694	14.5
20,000 - 24,999	25 931	1.8	99 649	6.3	210 926	11.4
25,000 - 29,999	12 628	0.9	56 851	3.6	147 295	7.9
30,000 - 39,999	13 573	0.9	60 169	3.8	183 254	9.9
40,000 - 59,999	8 358	0.6	44 794	2.8	150 440	8.1
60,000 and over	6 440	0.4	36 434	2.3	128 263	6.9
<b>Total</b>	<b>1 452 576</b>	<b>100.0</b>	<b>1 582 215</b>	<b>100.0</b>	<b>1 855 553</b>	<b>100.0</b>
<i>Median Monthly Household Income (HK\$)</i>						
	5,160		9,964		17,500	

# Housing

## Number of Occupied Quarters

**Table 26 Occupied Quarters by Type of Housing, 1986, 1991 and 1996**

<i>Type of Housing</i>	<i>1986</i>		<i>1991</i>		<i>1996</i>	
	<i>Number</i>	<i>%</i>	<i>Number</i>	<i>%</i>	<i>Number</i>	<i>%</i>
Public rental housing	509 740	37.9	574 891	38.1	651 007	36.6
Housing Authority subsidized sale flats	57 134	4.2	115 718	7.7	194 185	10.9
Housing Society subsidized sale flats <sup>(1)</sup>	N.A.	N.A.	N.A.	N.A.	4 579	0.3
Private permanent housing <sup>(1)</sup>	626 136	46.5	730 676	48.5	873 954	49.1
Temporary housing	103 754	7.7	63 861	4.2	41 111	2.3
Non-domestic housing <sup>(2)†</sup>	49 294	3.7	22 851	1.5	14 582	0.8
Total	1 346 058	100.0	1 507 997	100.0	1 779 418	100.0

- Note :
- (1) Housing Society subsidized sale flats include flats built under the Flat For Sale Scheme (FFSS) and the Sandwich Class Housing Scheme (SCHS) of the Housing Society. These flats were classified under 'Private permanent housing' in the 1986 Population By-census and the 1991 Population Census and no separate figures were available then.
  - (2) Please see Definition of Terms for the detailed coverage of this housing type. The counting rule for quarters in hospitals, penal institutions and barracks adopted in the 1996 By-census is different from those adopted in the previous censuses/by-censuses. The above figures are therefore not strictly comparable.

## Population by Type of Housing

**Table 27 Population by Type of Housing, 1986, 1991 and 1996**

<i>Type of Housing</i>	<i>1986</i>		<i>1991</i>		<i>1996</i>	
	<i>Number</i>	<i>%</i>	<i>Number</i>	<i>%</i>	<i>Number</i>	<i>%</i>
Public rental housing	2 185 575	40.8	2 234 565	40.5	2 391 857	38.5
Housing Authority subsidized sale flats	219 394	4.1	415 540	7.5	691 895	11.1
Housing Society subsidized sale flats <sup>(1)</sup>	N.A.	N.A.	N.A.	N.A.	17 117	0.3
Private permanent housing <sup>(1)</sup>	2 504 775	46.8	2 587 287	47.0	2 912 626	46.9
Temporary housing	361 634	6.7	197 767	3.6	124 617	2.0
Non-domestic housing <sup>(2)</sup>	87 339	1.6	76 020	1.4	69 254	1.1
<b>Total<sup>(3)</sup></b>	<b>5 358 717</b>	<b>100.0</b>	<b>5 511 179</b>	<b>100.0</b>	<b>6 207 366</b>	<b>100.0</b>

- Notes :
- (1) Housing Society subsidized sale flats include flats built under the Flat For Sale Scheme (FFSS) and the Sandwich Class Housing Scheme (SCHS) of the Housing Society. These flats were classified under 'Private permanent housing' in the 1986 Population By-census and the 1991 Population Census and no separate figures were available then.
  - (2) Please see Definition of Terms for the detailed coverage of this housing type. The counting rule for quarters in hospitals, penal institutions and barracks adopted in the 1996 By-census is different from those adopted in the previous censuses/by-censuses. The above figures are therefore not strictly comparable.
  - (3) The figures exclude persons living on board vessels.

## Domestic Households by Type of Quarters

**Table 28 Domestic Households by Type of Quarters, 1986, 1991 and 1996**

<i>Type of Quarters</i>	<i>1986</i>		<i>1991</i>		<i>1996</i>	
	<i>Number</i>	<i>%</i>	<i>Number</i>	<i>%</i>	<i>Number</i>	<i>%</i>
<b>Permanent housing</b>						
Public rental flats	513 849	35.5	576 313	36.5	657 026	35.5
Housing Authority subsidized sale flats	57 183	4.0	115 729	7.3	194 332	10.5
Housing Society subsidized sale flats <sup>(1)</sup>	N.A.	N.A.	N.A.	N.A.	4 579	0.2
<b>Private residential flats<sup>(1)</sup></b>						
Whole house/flat <sup>(2)</sup>	447 937	31.0	585 392	37.0	714 110	38.5
Room/Cockloft/Bedspace <sup>(2)</sup>	186 074	12.9	120 113	7.6	95 190	5.1
Non self-contained quarters	2 128	0.1	1 180	0.1	787	0.0
Villas/Bungalows/Modern village houses	42 000	2.9	50 763	3.2	76 096	4.1
Simple stone structures	50 281	3.5	32 189	2.0	29 558	1.6
Staff Quarters	20 265	1.4	20 275	1.3	23 556	1.3
Non-domestic quarters <sup>(3)</sup>	15 904	1.1	12 461	0.8	15 622	0.8
<b>Temporary housing</b>						
Public temporary quarters	35 637	2.5	27 703	1.8	14 127	0.8
Private temporary structures	74 431	5.1	37 954	2.4	28 265	1.5
<b>Total<sup>(4)</sup></b>	<b>1 445 689</b>	<b>100.0</b>	<b>1 580 072</b>	<b>100.0</b>	<b>1 853 248</b>	<b>100.0</b>

- Notes :
- (1) Housing Society subsidized sale flats include flats built under the Flat For Sale Scheme (FFSS) and the Sandwich Class Housing Scheme (SCHS) of the Housing Society. These flats were classified under 'Private residential flats' in the 1986 Population By-census and the 1991 Population Census and no separate figures were available then.
  - (2) These types of accommodation refer to those found in self-contained quarters which has internal piped water supply and a flush toilet system.
  - (3) Please see Definition of Terms for the detailed coverage of this quarters type. The counting rule for quarters in hospitals, penal institutions and barracks adopted in the 1996 By-census is different from those adopted in the previous censuses/by-censuses. The above figures are therefore not strictly comparable.
  - (4) The figures exclude domestic households living on board vessels.

## Degree of Sharing

**Table 29 Average Number of Domestic Households per Quarters by Type of Housing, 1986, 1991 and 1996**

<i>Type of Housing</i>	<i>Average Number of Domestic Households per Quarters</i>		
	<i>1986</i>	<i>1991</i>	<i>1996</i>
Public rental housing	1.01	1.01	1.01
Housing Authority subsidized sale flats	1.00	1.00	1.00
Housing Society subsidized sale flats <sup>(1)</sup>	N.A.	N.A.	1.00
Private permanent housing <sup>(1)</sup>	1.21	1.12	1.08
Temporary housing	1.07	1.03	1.03
Non-domestic housing <sup>(2)</sup>	1.12	1.06	1.34
Overall	1.11	1.06	1.05

- Note :
- (1) Housing Society subsidized sale flats include flats built under the Flat For Sale Scheme (FFSS) and the Sandwich Class Housing Scheme (SCHS) of the Housing Society. These flats were classified under 'Private permanent housing' in the 1986 Population By-census and the 1991 Population Census and no separate figures were available then.
  - (2) Please see Definition of Terms for the detailed coverage of this housing type. The counting rule for quarters in hospitals, penal institutions and barracks adopted in the 1996 By-census is different from those adopted in the previous censuses/by-censuses. The above figures are therefore not strictly comparable.

## Tenure of Accommodation

**Table 30 Domestic Households by Tenure of Accommodation, 1986, 1991 and 1996**

<i>Tenure</i>	<i>1986</i>		<i>1991</i>		<i>1996</i>	
	<i>Number</i>	<i>%</i>	<i>Number</i>	<i>%</i>	<i>Number</i>	<i>%</i>
Owner-occupier	506 926	35.1	673 067	42.6	824 184	44.5
Sole tenant	657 818	45.4	719 954	45.6	842 236	45.4
Co-tenant	85 274	5.9	63 683	4.0	62 733	3.4
Main tenant	24 353	1.7	12 209	0.8	9 205	0.5
Sub-tenant	73 570	5.1	41 505	2.6	28 424	1.5
Rent free	31 486	2.2	16 969	1.1	22 631	1.2
Provided by employer	66 262	4.6	52 685	3.3	63 835	3.4
Total <sup>(1)</sup>	1 445 689	100.0	1 580 072	100.0	1 853 248	100.0

Note: (1) The figures exclude domestic households living on board vessels.

# Household Rent

**Table 31 Median Household Rent by Type of Quarters, 1986, 1991 and 1996**

<i>Type of Quarters</i>	<i>Median Household Rent (HK\$)</i>		
	<i>1986</i>	<i>1991</i>	<i>1996</i>
<b>Permanent housing</b>			
Public rental flats	350	669	1,132
Housing Authority subsidized sale flats	314	1,350	3,000
Housing Society subsidized sale flats <sup>(1)</sup>	N.A.	N.A.	1,669
<b>Private residential flats<sup>(1)</sup></b>			
Whole house/flat <sup>(2)</sup>	1,800	3,558	6,500
Room/Cockloft/Bedspace <sup>(2)</sup>	618	932	2,200
Non self-contained quarters	350	754	3,500
Villas/Bungalows/Modern village houses	1,049	2,253	4,320
Simple stone structures	359	502	1,000
Staff quarters	221	438	779
Non-domestic quarters <sup>(3)</sup>	387	630	680
<b>Temporary housing</b>			
Public temporary quarters	75	128	195
Private temporary structures	322	353	500

- Notes :
- (1) Housing Society subsidized sale flats include flats built under the Flat For Sale Scheme (FFSS) and the Sandwich Class Housing Scheme (SCHS) of the Housing Society. These flats were classified under 'Private residential flats' in the 1986 Population By-census and the 1991 Population Census and no separate figures were available then.
  - (2) These types of accommodation refer to those found in self-contained quarters which has internal piped water supply and a flush toilet system.
  - (3) Please see Definition of Terms for the detailed coverage of this quarters type. The counting rule for quarters in hospitals, penal institutions and barracks adopted in the 1996 By-census is different from those adopted in the previous censuses/by-censuses. The above figures are therefore not strictly comparable.



**Geographical Distribution  
and  
Internal Migration**

## Geographical Distribution

**Table 32 Resident Population by Area, 1986, 1991 and 1996**

<i>Area</i>	<i>1986</i>		<i>1991</i>		<i>1996</i>	
	<i>Number</i>	<i>%</i>	<i>Number</i>	<i>%</i>	<i>Number</i>	<i>%</i>
Hong Kong Island	1 201 459	21.9	1 250 993	22.0	1 312 637	21.1
Kowloon	2 349 445	42.7	2 030 683	35.8	1 987 996	32.0
New Territories	1 907 031	34.7	2 374 818	41.9	2 906 733	46.8
Marine	37 553	0.7	17 620	0.3	10 190	0.2
Total	5 495 488	100.0	5 674 114	100.0	6 217 556	100.0

**Table 33 Resident Population by District Board District, 1986, 1991 and 1996**

<i>District Board District<sup>(1)</sup></i>	<i>Resident Population</i>			<i>Percentage Change</i>		
	<i>1986</i>	<i>1991</i>	<i>1996</i>	<i>1986-91</i>	<i>1991-96</i>	<i>1986-96</i>
<b>Hong Kong Island</b>						
Central and Western	257 131	253 383	259 224	-1.5	+2.3	+0.8
Wan Chai	200 403	180 309	171 656	-10.0	-4.8	-14.3
Eastern	500 451	560 200	594 087	+11.9	+6.0	+18.7
Southern	243 474	257 101	287 670	+5.6	+11.9	+18.2
Sub-total	1 201 459	1 250 993	1 312 637	+4.1	+4.9	+9.3
<b>Kowloon</b>						
Yau Tsim Mong	353 437	282 060	260 573	-20.2	-7.6	-26.3
Sham Shui Po	433 958	380 615	365 927	-12.3	-3.9	-15.7
Kowloon City	432 894	402 934	378 205	-6.9	-6.1	-12.6
Wong Tai Sin	438 417	386 572	396 220	-11.8	+2.5	-9.6
Kwun Tong	690 739	578 502	587 071	-16.2	+1.5	-15.0
Sub-total	2 349 445	2 030 683	1 987 996	-13.6	-2.1	-15.4
<b>New Territories</b>						
Kwai Tsing	420 049	440 807	470 726	+4.9	+6.8	+12.1
Tsuen Wan	245 238	271 576	270 801	+10.7	-0.3	+10.4
Tuen Mun	287 539	380 683	463 703	+32.4	+21.8	+61.3
Yuen Long	211 540	229 724	341 030	+8.6	+48.5	+61.2
North	146 818	165 666	231 907	+12.8	+40.0	+58.0
Tai Po	140 504	202 117	284 640	+43.9	+40.8	+102.6
Sha Tin	362 033	506 368	582 993	+39.9	+15.1	+61.0
Sai Kung	46 074	130 418	197 876	+183.1	+51.7	+329.5
Islands	47 236	47 459	63 057	+0.5	+32.9	+33.5
Sub-total	1 907 031	2 374 818	2 906 733	+24.5	+22.4	+52.4
Land total	5 457 935	5 656 494	6 207 366	+3.6	+9.7	+13.7
plus: Marine	37 553	17 620	10 190	-53.1	-42.2	-72.9
Whole territory	5 495 488	5 674 114	6 217 556	+3.3	+9.6	+13.1

Notes : (1) The boundaries of the District Board districts have been revised three times since 1986. The effect of the boundary revision on the geographical distribution of population was small in most districts. Intercensal comparison of district population should be made with these changes in mind.

# Population Density

**Table 34 Population Density by District Board District, 1986, 1991 and 1996**

<i>District Board District<sup>(1)</sup></i>	<i>Density (number of residents per km<sup>2</sup>)</i>		
	<i>1986</i>	<i>1991</i>	<i>1996</i>
Central and Western	20 854	20 479	20 755
Wan Chai	20 182	18 209	17 235
Eastern	27 387	30 316	31 735
Southern	6 380	6 701	7 505
Yau Tsim Mong	75 521	58 482	38 320
Sham Shui Po	56 875	48 822	38 237
Kowloon City	47 156	41 759	38 553
Wong Tai Sin	46 940	41 331	42 331
Kwun Tong	60 826	52 562	53 081
Kwai Tsing	21 464	21 158	21 793
Tsuen Wan	4 159	4 581	4 502
Tuen Mun	3 611	4 711	5 663
Yuen Long	1 545	1 664	2 465
North	1 074	1 211	1 689
Tai Po	1 033	1 496	2 103
Sha Tin	5 402	7 378	8 468
Sai Kung	365	1 026	1 542
Islands	290	293	364
Overall	5 225	5 385	5 796

Notes: (1) The boundaries of the District Board districts have been revised three times since 1986. The effect of the boundary revision on the geographical distribution of population was small in most districts. Intercensal comparison of district population should be made with these changes in mind.

## Internal Migration

**Table 35 Population Aged 5 and Over Having Internally Migrated<sup>(1)</sup> by Area of Original Residence and Area of Current Residence, 1996**

<i>Area of Original Residence</i>	<i>Area of Current Residence</i>				<i>Total</i>
	<i>Hong Kong Island</i>	<i>Kowloon</i>	<i>New towns</i>	<i>Other areas in the New Territories</i>	
<i>Number (Percentage share in brackets)</i>					
Hong Kong Island	109 424 (9.6)	35 298 (3.1)	63 844 (5.6)	10 493 (0.9)	219 059 (19.2)
Kowloon	48 532 (4.3)	152 616 (13.4)	246 203 (21.6)	17 983 (1.6)	465 334 (40.9)
New towns	31 240 (2.7)	72 198 (6.3)	260 925 (22.9)	25 479 (2.2)	389 842 (34.2)
Other areas in the New Territories	6 537 (0.6)	7 048 (0.6)	45 021 (4.0)	2 486 (0.2)	61 092 (5.4)
Marine	1 380 (0.1)	125 (0.0)	961 (0.1)	575 (0.1)	3 041 (0.3)
Total	197 113 (17.3)	267 285 (23.5)	616 954 (54.2)	57 016 (5.0)	1 138 368 (100.0)

Note: (1) Persons having internally migrated were those whose area of current residence was different from the area of original residence five years ago. In defining internal migration, a change in the area of residence refers to a move (a) from a District Board district to another District Board district; or (b) within a District Board district in the New Territories, from a new town to another new town, or from a new town to other areas in the district or vice versa.

## Place of Work

**Table 36 Working Population by Place of Work and Area of Residence, 1996**

<i>Place of Work</i>	<i>Area of Residence</i>					<i>Total</i>
	<i>Hong Kong Island</i>	<i>Kowloon</i>	<i>New towns</i>	<i>Other areas in the New Territories</i>	<i>Marine</i>	
	<i>Number (Percentage share in brackets)</i>					
Hong Kong Island	525 401 (17.3)	190 075 (6.2)	172 856 (5.7)	22 192 (0.7)	253 (0.0)	910 777 (29.9)
Kowloon	100 158 (3.3)	573 605 (18.8)	345 659 (11.4)	24 280 (0.8)	142 (0.0)	1 043 844 (34.3)
New towns	31 173 (1.0)	120 129 (3.9)	569 159 (18.7)	40 808 (1.3)	36 (0.0)	761 305 (25.0)
Other areas in the New Territories	8 060 (0.3)	17 854 (0.6)	51 229 (1.7)	48 276 (1.6)	156 (0.0)	125 575 (4.1)
No fixed places	17 857 (0.6)	40 106 (1.3)	45 415 (1.5)	5 290 (0.2)	29 (0.0)	108 697 (3.6)
Marine	1 724 (0.1)	515 (0.0)	1 193 (0.0)	1 112 (0.0)	6 471 (0.2)	11 015 (0.4)
Places outside Hong Kong	15 923 (0.5)	27 224 (0.9)	36 266 (1.2)	2 925 (0.1)	147 (0.0)	82 485 (2.7)
Total	700 296 (23.0)	969 508 (31.9)	1 221 777 (40.1)	144 883 (4.8)	7 234 (0.2)	3 043 698 (100.0)

## Place of Study

**Table 37 Persons Studying Full-time in Schools or Educational Institutions in Hong Kong by Place of Study and Area of Residence, 1996**

<i>Place of Study</i>	<i>Area of Residence</i>					<i>Total</i>
	<i>Hong Kong Island</i>	<i>Kowloon</i>	<i>New towns</i>	<i>Other areas in the New Territories</i>	<i>Marine</i>	
<i>Number (Percentage share in brackets)</i>						
Hong Kong Island	232 637 (17.4)	14 693 (1.1)	12 551 (0.9)	2 940 (0.2)	539 (0.0)	263 360 (19.7)
Kowloon	12 455 (0.9)	336 635 (25.2)	84 709 (6.3)	7 776 (0.6)	14 (0.0)	441 589 (33.1)
New towns	3 934 (0.3)	15 478 (1.2)	541 884 (40.6)	25 710 (1.9)	375 (0.0)	587 381 (44.0)
Other areas in the New Territories	1 441 (0.1)	3 138 (0.2)	12 028 (0.9)	24 642 (1.8)	618 (0.0)	41 867 (3.1)
Total	250 467 (18.8)	369 944 (27.7)	651 172 (48.8)	61 068 (4.6)	1 546 (0.1)	1 334 197 (100.0)



# **Definition of Terms**

## Definition of Terms (in alphabetical order)

- (1) **Ability to Speak a Language/Dialect:** If a person is able to conduct a short conversation with a particular language/dialect in everyday life activities such as responding when being asked for direction, studying at school or communicating at work, he is deemed able to speak the language/dialect.
- (2) **Activity Status:** The population can be divided into two main groups, economically active population (that is the labour force) and economically inactive population as follows:

*Economically active population:* This comprises the employed (that is the working population) and the unemployed.

The working population refers to persons aged 15 and over who should (a) be engaged in performing work for pay or profit during the seven days before the By-census reference date; or (b) have formal job attachment during the seven days before the By-census reference date. The working population can be distinguished into:

*Employee:* A person who works for an employer (private companies or government) for wage, salary, commission, tips or pay in kind. Domestic helpers, outworkers and paid family workers are also included here.

*Employer:* A person who works for profit or fees in his/her own business/profession and employs one or more persons to work for him/her.

*Self-employed:* A person who works for profit or fees in his/her own business/profession, neither employed by someone nor employing others.

*Unpaid family worker:* A person who works for no pay in a family business is also considered as employed. Food and lodging and pocket money are not counted as pay.

*Economically inactive population:* This comprises persons who have not had a job and have not been at work during the seven days before the By-census reference date, excluding persons who have been on leave/holiday during the seven-day period and persons who are unemployed. Persons such as home-makers, retired persons and all those aged below 15 are thus included.

- (3) **Age:** The number of complete years a person has passed since birth.
- (4) **Age Dependency Ratio:** The number of persons aged under 15 and 65 and over per 1 000 persons aged between 15 and 64.

- (5) **Age-sex-specific Labour Force Participation Rate:** The proportion of the economically active population (that is the labour force) in the population in a specific age and sex group.
- (6) **Area of Current Residence:** The broad geographical area in which a person was living at the time of the By-census.
- (7) **Area of Original Residence:** The broad geographical area in which a person lived five years before the By-census.
- (8) **Average Annual Growth Rate:** When population increased over a period of more than one year, the average annual growth rate is computed using the following formula:

$$\frac{P_2}{P_1} = (1 + r)^n$$

where  $P_1$  = population at the beginning of a period  
 $P_2$  = population at the end of a period  
 $r$  = average annual growth rate  
 $n$  = number of years in the period

The average annual growth rate of domestic households is calculated using the same formula.

- (9) **Average Domestic Household Size:** The average number of residents per domestic household. It is calculated by dividing the total number of residents who were living in domestic households by the total number of domestic households.
- (10) **Average Number of Domestic Households per Quarters (or Degree of Sharing):** This is calculated by dividing the total number of domestic households by the total number of quarters occupied by domestic households.
- (11) **Child Dependency Ratio:** The number of persons aged under 15 per 1 000 persons aged between 15 and 64.
- (12) **District Board District:** These geographical districts are as declared in the Declaration of Districts Order 1994 (L.N. 94 of 1994) and Declaration of Districts (Amendment) Order 1994 (L.N. 330 of 1994) for District Board election held on 18 September 1994. There are 18 districts: 4 on Hong Kong Island; 5 in Kowloon and 9 in the New Territories.
- (13) **Domestic Household:** A domestic household consists of a group of persons who live together and make common provision for essentials for living. These persons need not be related. If a person makes provision for essentials for living without sharing with other persons, he is also regarded as a household. In this case the household is a one-person household.
- (14) **Duration of Residence in Hong Kong:** The total number of complete years for which a person has lived in Hong Kong. Any period of temporary absence from Hong Kong for six months or more was not counted in reckoning the duration.

- (15) **Economically Active Population:** Please see **Activity Status** in (2).
- (16) **Educational Attainment:** The highest level of education ever attained by a person in school or other educational institution, regardless of whether he had completed the course. Only formal courses are counted as educational attainment. A formal course shall be one that lasts for at least one academic year, requires specific academic qualifications for entrance (except degree course offered by the Open Learning Institute of Hong Kong) and includes examinations or specific academic assessment procedures. The different levels of educational attainment are as follows:
- No schooling:* Including those who had never attended a formal course.
- Kindergarten:* Including all classes in kindergarten.
- Primary:* Including Primary 1 - 6 in all schools.
- Lower secondary:* Including Secondary 1 - 3 in all schools.
- Upper secondary or equivalent:* Including Secondary 4 - 5 in all schools, and craft level (technical/vocational courses at upper secondary level).
- Sixth form or equivalent:* Including Secondary 6 - 7 in all schools, and technician level (other further non-advance education).
- Tertiary (Non-degree courses):* Including all certificate/diploma and higher diploma/endorsement certificate courses in technical institutes/technical colleges/polytechnics, associateship and other non-degree courses in polytechnics and other post-secondary colleges. Certificate/diploma courses in colleges/institute of education and in the Hong Kong Technical Teachers' College and nurse training courses are also included in this category.
- Tertiary (Degree courses):* Including all first degree courses and post-graduate courses in tertiary educational institutions in Hong Kong and overseas.
- (17) **Elderly Dependency Ratio:** The number of persons aged 65 and over per 1 000 persons aged between 15 and 64.
- (18) **Field of Education:** This refers to the subject of the courses to which a person's highest level of education was related. If a person had completed courses in more than one field of education, only the field which he considered the most important was recorded.
- General programmes:* Including general programmes for preparatory, primary and secondary education.

*Arts and social science:* Including studies in music; drawing and painting; sculpturing; drama; handicrafts; photography and cinematography; literature; languages and linguistics; history; philosophy; theology; religion; archaeology; anthropology; economics; sociology; criminology; pure psychology; clinical psychology; demography; geography; political science and regional studies.

*Pure science:* Including studies in mathematics; biology; chemistry; geology; physics; astronomy; meteorology; oceanography; statistics and actuarial science.

*Education:* Including studies in colleges of education and Hong Kong Technical Teachers' College; certificate/diploma of education courses and university degree courses in education.

*Business, commercial and computer studies:* Including studies in banking; marketing; finance and investment; valuation; purchase and supply; insurance; secretaryship; company secretaryship; public and business administration; accountancy; shorthand; typing; book-keeping; computer programming and system analysis; electronic data processing; business machine and computer operation.

*Medical and health related studies:* Including studies in medicine (except Chinese herbal medicine); nursing; dentistry; psychiatry; radiology; pharmacy, dental and medical technology; physical and occupational therapy; speech therapy; anatomy; physiology; immunology; pathology and forensic medicine.

*Architecture and construction engineering:* Including studies in architecture, town planning and environmental design; transport studies; building technology such as surveying, carpentry, bricklaying, plastering and tiling, plumbing and pipe-fitting, sewerage; water supply and treatment; civil and structural engineering; building services engineering; soil mechanics; draughtsmanship; interior design; land, building and estate management.

*Mechanical, electrical, electronic and marine engineering:* Including studies in mechanical engineering; mining engineering; motor mechanics; vehicle technology; production engineering; plastic mould technology; tool and die technology; industrial engineering; electrical and electronic engineering; refrigeration and air-conditioning; television/radio mechanics and servicing; telecommunication; marine electronics; ship building and repairs and naval architecture.

*Textile, design and other industrial technology:* Including studies in textile technology/clothing technology such as dyeing, fabric, printing, garment and leather manufacturing; printing technology; industrial design; basic, graphic and 3-dimensional design; chemical engineering; watch and clock making and optics.

*Other vocational studies:* Including studies in law and jurisprudence; journalism; radio and television broadcasting; public relations; library sciences; social work; agricultural programmes; Chinese herbal medicine; tourism; hotel management; laboratory technicianship; civil security; military; vocational counselling and other service trades.

- (19) **Household Composition:** Household composition is derived from the information on relationship to the head of household of each person and the identification of spouse and parent-child relationships among members of the household. It shows the structure of a household in terms of the number of family nuclei and the relationship between a family nucleus and other related household members. A family nucleus is a married couple without children, a married couple with one or more never married children or one parent (either father or mother) with one or more never married children. The different categories of household composition are as follows:

*One person:* A household with only one person.

*One unextended nuclear family:* A household comprising one family nucleus without other related persons.

*One vertically extended nuclear family:* A household comprising one family nucleus with one or more related persons not of the same generation. It may or may not include other related persons of the same generation.

*One horizontally extended nuclear family:* A household comprising one family nucleus with one or more related persons of the same generation but without any other related persons of a different generation.

*Two or more nuclear families:* A household comprising two or more family nuclei whose members may or may not be related in any way.

*Related persons forming no nuclear family:* A household comprising related persons who do not form a family nucleus.

*Unrelated persons:* A household comprising unrelated person(s) with or without one or more related person(s).

- (20) **Household Size:** The number of residents living in the domestic household.
- (21) **Industry:** The main kind of goods or services produced by the establishment in which a person worked during the seven days before the reference date of the By-census. The classification used follows the major divisions of the Hong Kong Standard Industrial Classification (1991). The coverage of the industrial sectors presented in the table are defined as follows:

*Manufacturing:* Including spinning of cotton and other yarn, weaving and knitting of cotton and other fabrics; bleaching, dyeing, finishing; manufacturing of wearing apparel, knitwear and other made-up textile goods, carpets, cordages, ropes and twines, food, beverage, tobacco, footwear, leather products, rubber products, plastic products, wood products, printed matters and paper products, metal products, machinery, chemicals, chemical products, glass and pottery.

*Construction:* Including building construction, civil engineering, plumbing, electrical wiring, air-conditioning installation and repair.

*Wholesale, retail and import/export trades, restaurants and hotels:* Including wholesale and retail trade; import and export trade; peddlers; Chinese general brokers; other commercial agents; restaurants; cafes; hotels and rooming houses.

*Transport, storage and communication:* Including land transport, water transport and air transport; services allied to transport; storage and warehousing; and post and telecommunications.

*Financing, insurance, real estate and business services:* Including financing; insurance; real estate; offices of lawyers, accountants, auditors, architects, surveyors and advertising agents and data processing services.

*Community, social and personal services:* Including government services; the armed forces; educational service; medical, dental and other health services; sanitary services; welfare institutions; religious organizations; cinemas and theatres; radio and television broadcasting; libraries and museums; electrical repair shops; automobile repair garages and other household and personal services.

*Others:* Including such industries as 'Agriculture and fishing'; 'Mining and quarrying'; 'Electricity, gas and water' and industrial activities inadequately described or unclassifiable.

- (22) **Internal Migration:** Persons internally migrated were those whose area of current residence was different from the area of original residence five years ago. In defining internal migration, a change in the area of residence refers to a move (a) from a District Board district to another District Board district; or (b) within a District Board district in the New Territories, from a new town to another new town, or from a new town to other areas in the district or vice versa.
- (23) **Labour Force:** Please see Activity Status in (2).
- (24) **Labour Force Participation Rate:** The proportion of economically active population (that is the labour force) in the total population aged 15 and over.
- (25) **Marital Status:** The marital status of a person was recorded according to the status reported by respondents in the By-census. There was no check on whether the marriage or divorce had undergone any legal registration or ceremony.

- (26) **Median Age:** The average age so calculated that 50% of the total number of persons were above that age and the other 50% were below it.
- (27) **Median Monthly Household Income:** The average monthly household income so calculated that 50% of the total number of domestic households had incomes above that figure and the other 50% had incomes below it. Zero income households are included in the calculation.
- (28) **Median Monthly Household Rent:** The average monthly rent so calculated that 50% of the total number of domestic households paid more than that amount and the other 50% paid less than that. Zero rent households are excluded in the calculation.
- (29) **Median Monthly Income from Main Employment:** The average income from main employment so calculated that 50% of the working population excluding unpaid family worker had income above that figure and the other 50% had income below it.
- (30) **Monthly Household Income:** The total income (including earnings in cash from all employments and other cash incomes) for February 1996 of members of the household.
- (31) **Monthly Household Rent:** This is the amount paid by a household for occupying an accommodation in March 1996. It includes rates for that month but excludes payments for water, electricity and management fee. For a main tenant, rent is the net amount he paid after deducting the rent he received from his sub-tenant(s) for subletting part of the quarters. Zero rent households include households living in their owned quarters, households living in accommodation of friends or relatives without paying any rent with or without permission, main tenant households with total rental receipts from sub-tenant(s) greater than or equal to rent paid, and those households whose quarters were provided free by employers.
- (32) **Monthly Income from Main Employment:** For employers or self-employed persons, this is the amount earned excluding expenses incurred in running their main business. For employees, this is the total amount earned from their main employment including salary or wage, bonus, commission, overtime, housing allowance, tips and other cash allowances. New Year bonus and double pay are excluded. The amount recorded refers to the income for February 1996.
- (33) **Nationality:** Nationality is a legal concept. It is usually identified with a person's travel document or birth certificate. It is not necessarily related to his ethnicity, race or place of origin.
- (34) **New Town:** The delineation of the areas in the New Territories into new towns is adopted from the boundaries developed by the Planning Department and Territory Development Department for new town development purposes. There are eleven new towns defined for the purpose of analysis in this report, namely Kwai Chung, Tsing Yi, Tsuen Wan, Tuen Mun, Yuen Long, Tin Shui Wai, Fanling/Sheung Shui, Tai Po, Sha Tin, Ma On Shan and Tseung Kwan O.

- (35) **Occupation:** This refers to the kind of work a person performed during the seven days before the reference date of the By-census. The classification basically follows the major groups and the sub-major groups of the International Standard Classification of Occupations (1988) or (ISCO-88) for abbreviation, with local adaptation in Hong Kong.

*Managers and administrators:* Including administrators, commissioners and directors in government service; consuls; councillors; directors, chief executive officers, presidents, general managers, functional managers, branch managers and small business managers in industry, commerce, import and export trade, wholesale and retail trade, catering and lodging services, transport, electricity, gas, water and other services and agricultural and fishery sectors.

*Professionals:* Including qualified professional scientists, doctors, dentists and other medical professionals; architects, surveyors and engineers; vice-chancellors, directors, academic staff and administrators of university, polytechnic and post-secondary college; principals and teachers of secondary school; statisticians; mathematicians; system analysts and computer programmers; lawyers and judges; accountants; business consultants and analysts; social workers; translators and interpreters; news editors and journalists; writers; librarians and members of religious orders.

*Associate professionals:* Including science technicians, nurses and midwives, dental assistants and other health associate professionals; architectural, surveying and engineering technicians; optical and electronic equipment controllers; ship pilots and air traffic controllers; principals and teachers of primary and pre-primary school; statistical assistants; computer operators; law clerks; accounting supervisors; public relation officers; sales representatives; designers; estate managers; social work assistants; superintendents, inspectors and officers of the police and other discipline services; performers and sportsmen.

*Clerks:* Including stenographers, secretaries and typists; bookkeeping, finance, shipping, filing and personnel clerks; cashiers and tellers; receptionists and information clerks.

*Service workers and shop sales workers:* Including air hostesses and travel guides; house stewards; cooks and waiters; baby-sitters; hairdressers and beauticians; rank and file of the police and other discipline services; transport conductors and other service workers; wholesale and retail salesmen in shops; shop assistants and fashion models.

*Craft and related workers:* Including miners and quarrymen; bricklayers, carpenters and other construction workers; metal moulders; blacksmiths; machinery, electric and electronic instrument mechanics; jewellery workers and watch makers; potters; typesetters; bakers, food and beverage processors; painters; craft workers in textile, garment, leather, rubber and plastic trades and other craft workers.

*Plant and machine operators and assemblers:* Including well drillers and borers; ore smelting furnace operators; brick and tile kilnmen; sawmill sawyers; paper makers; chemical processing plant operators; power-generating plant and boiler operators; asbestos cement products makers; metal finishers and electroplaters; dairy and other food processing machine operators; printing machine operators; machine operators for production of textile, rubber and plastic products; assemblers; drivers; seamen and other plant and machine operators.

*Elementary occupations:* Including street vendors; domestic helpers and cleaners; messengers; private security guards; watchmen; freight handlers; lift operators; construction labourers; hand packers; agricultural and fishery labourers.

*Others:* Including farm workers, animal husbandry workers and fishermen, members of the armed forces and occupations unidentifiable and inadequately described.

- (36) **Occupied Quarters:** Quarters refers to such unit of accommodation as flats, houses and structures which could be used for the purpose of accommodation. Please see the definition of **Type of Quarters** for details. Occupied quarters refer to those quarters which were occupied at the By-census reference date.
- (37) **One-person Household:** Please see **Household Composition** in (19).
- (38) **Place of Study:** The place of study of a person refers to the district in Hong Kong where the school or educational institution is located and the person concerned has to go there to attend formal full-time or part-time course.
- (39) **Place of Work:** The place of work of a person refers to the district where the work place of a person is located and the person concerned usually stayed or went there during the seven days before the By-census reference date for business matters. For a person who has more than one job during the reference period, the place of work refers to that of his main employment. For a person who changes his work place day to day (e.g. construction site worker) or has many work places (e.g. doctor working in both hospital and clinic, mobile hawker), the work place is where the person worked for the longest hours in the reference period. For a person who has no fixed place of work (e.g. salesman, driver) but needed to report duty every day, the location of the office or depot is the work place. For a cross-border truck driver who drives between Hong Kong and China and spends most of the working hours in China, then China is the place of work.
- (40) **Population Density:** The ratio of the number of residents to the land area (in square kilometres) of the geographical division in which they are residing.

- (41) **Population Present in Hong Kong:** This refers to the total number of persons present in Hong Kong at the reference moment of the By-census. This includes residents present in Hong Kong, transients and Vietnamese migrants but excludes those residents who were temporarily away from Hong Kong on that date.
- (42) **Reference Moment:** This refers to the reference moment of the 1996 Population By-census which was fixed at 3 a.m. on 15 March 1996. In recording the whereabouts of a person at the reference moment, a person who was on night shift, on the way home or at a place not for accommodation was regarded as staying in the quarters being enumerated at the reference moment. The term is used interchangeably with the term "reference date (i.e. 15 March 1996)" which appears in connection with some other definitions, including **Activity Status, Industry and Occupation.**
- (43) **Resident Population:** Residents who usually lived in Hong Kong, including those who were temporarily away from Hong Kong at the reference moment of the By-census.
- (44) **Residents Temporarily Away from Hong Kong:** Residents who usually lived in Hong Kong but were temporarily away at the reference moment of the By-census.
- (45) **School Attendance Rate:** The percentage of population attending full-time schools or educational institutions.
- (46) **Sex Ratio:** The number of males per 1 000 females.
- (47) **Tenure of Accommodation:** The terms or conditions under which accommodation is held by a household. The different terms are defined as follows:

*Owner-occupier:* A household which owns the quarters it occupies.

*Sole tenant:* A household which rents the whole quarters it occupies from someone who lives outside the quarters without sharing it with other household(s) or subletting.

*Co-tenant:* Two or more households each of which rents part of a quarters from someone who lives outside the quarters.

*Main tenant:* A household which rents the whole quarters it occupies from someone who lives outside the quarters and sublets it to other household(s).

*Sub-tenant:* A household which rents part of a quarters from someone who lives in the same quarters.

*Rent free:* A household which occupies an accommodation free, with or without the owner's permission. This excludes households occupying accommodation provided by employers.

*Provided by employer:* A household which occupies an accommodation provided by the employer of one of the household members. This also includes households occupying quarters leased from employers at a nominal rent. If a household member uses housing allowance given by his employer for renting accommodation, the tenure is not considered as provided by employer.

- (48) **Tertiary Education:** Please see **Educational Attainment** in (16).
- (49) **Transients:** Persons who were not residents of Hong Kong and stayed temporarily in Hong Kong at the By-census reference moment. They could be found in hotels/hostels/boarding houses, in households or on board ocean-going vessels/coasters in Hong Kong waters.
- (50) **Type of Quarters:** Quarters are classified according to the type of building in which they are located. The buildings are classified by the type of construction materials; the purpose for which they are built; and the sector responsible for their construction/management.

*Permanent housing*

*Public rental housing*

*Housing Authority rental flats (Group A):* These include flats in housing estates previously known as Government Low Cost Housing and those built by the Hong Kong Housing Authority. Flats in Mark I and Mark II blocks of Group B rental blocks after conversion are also grouped under this category.

*Housing Authority rental flats (Group B):* These are flats in housing estates previously known as Resettlement Estates but have been put under the management of the Housing Authority since 1973. They can be further divided into flats in Mark I to Mark VI blocks.

*Housing Society rental flats:* These are rental flats built and managed by the Hong Kong Housing Society.

*Subsidized sale flats*

*Housing Authority subsidized sale flats:* These are flats built under the Home Ownership Scheme, the Private Sector Participation Scheme or the Middle Income Housing Scheme of the Housing Authority.

*Housing Society subsidized sale flats:* These are flats built under the Flat for Sale Scheme and Sandwich Class Housing Scheme of the Hong Kong Housing Society.

## *Private housing*

*Private residential flats:* These include flats and apartments in multi-storey blocks or houses built mainly for residential purpose. Flats built under the Urban Improvement Scheme of the Housing Society and flats built by the Hong Kong Settlers' Corporation are also put under this category. Private residential flats can be dichotomized into self-contained (i.e. with internal piped water supply and flush toilet) and non self-contained quarters. For self-contained quarters, they can be further distinguished by type of accommodation into (a) whole house/flat and (b) room/cockloft/bedspace.

*Villas/Bungalows/Modern village houses:* These are individual houses of one-storey or multi-storeys built with full facilities including bathroom, flush toilet and internal piped water supply.

*Simple stone structures/Traditional village houses:* Simple stone structures are houses built of stones and/or other permanent materials usually of one storey high. Traditional village houses are also grouped under this category.

*Staff quarters:* Staff quarters purposely built by the government, hospitals, universities, schools and private companies.

## *Non-domestic housing*

*Non-domestic quarters:* These include accommodations (such as rooms and beds) in psychiatric hospitals, convalescent hospitals, infirmaries, penal institutions, elderly homes, boys' and girls' homes, religious houses, barracks, hotels, hostels, dormitories (such as those for university students), and other non-residential buildings (such as commercial buildings and industrial buildings).

## *Temporary housing*

### *Public temporary housing*

*Public temporary quarters:* These include temporary quarters in the Hong Kong Housing Authority cottage areas and temporary housing areas.

### *Private temporary housing*

*Private temporary structures:* These include private temporary structures such as roof-top structures, contractor's matsheds, nissen huts, derelict boats, huts and places not intended for residential purpose (such as landings, staircases, corridors, etc.).

- (51) **Usual Language/Dialect:** The usual language/dialect a person used in daily communication at home. This is not applicable to persons aged under 5 or dumb persons.
- (52) **Vietnamese Migrants:** These include Vietnamese refugees; Vietnamese migrants having been screened out and those pending determination of refugee status; ex-China Vietnamese illegal immigrants; Vietnamese migrants rescued by ocean-going vessels; and children born in Hong Kong to the above categories of Vietnamese migrants.
- (53) **Working Population:** Please see **Activity Status** in (2).



J33550200E0  
\$14