

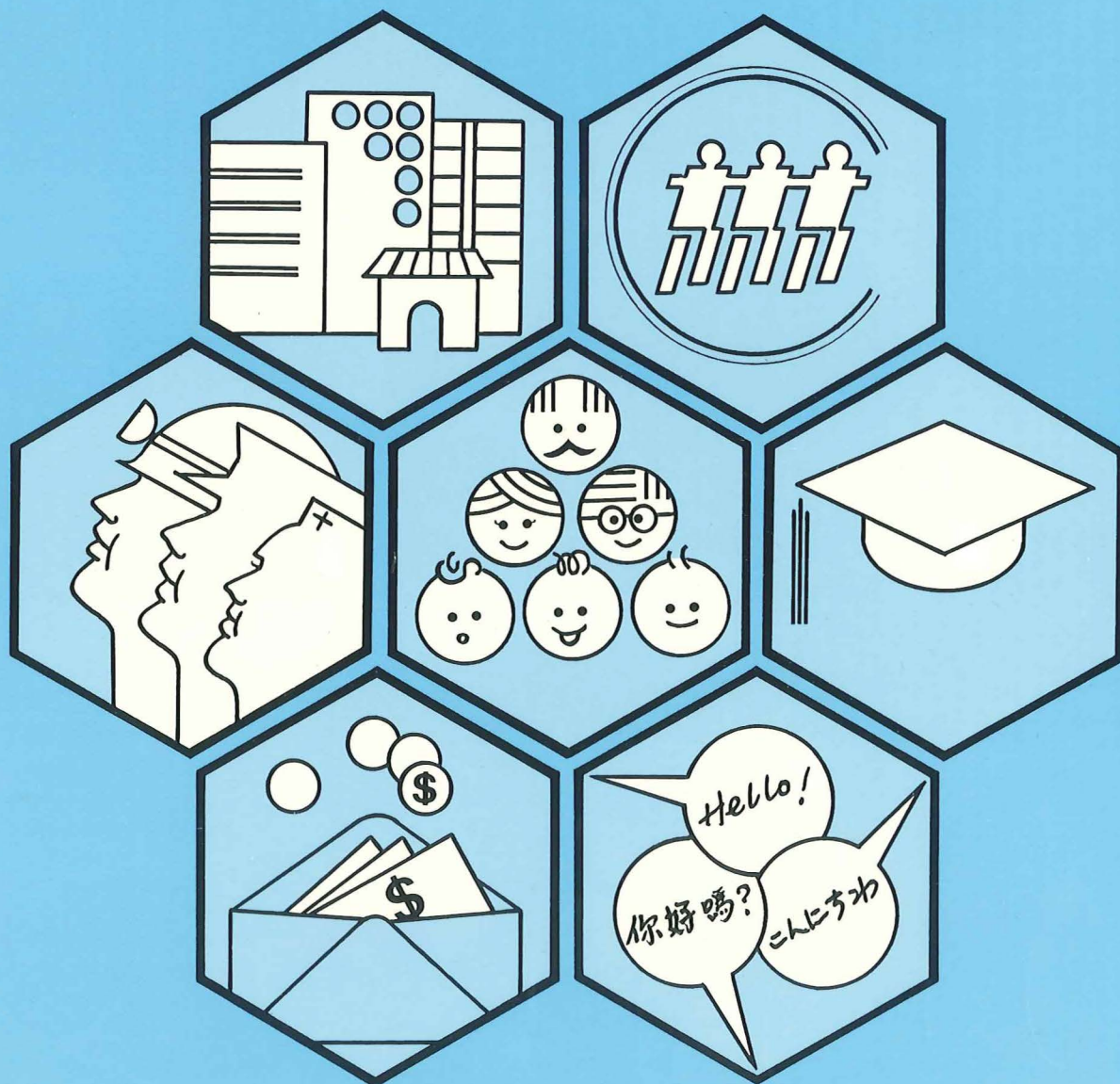
這份刊物的 PDF 版本的文字是從印刷版掃描而成，再利用光學字符識別軟件轉換成電子格式。由於原印刷版本已印製並保存多年，光學字符識別技術未必能準確地識別某些文字或數字。因此，搜索或複製此 PDF 檔案內的文字時應加以注意。

The text of this PDF publication was scanned from its printed version and then converted to electronic text using Optical Character Recognition (OCR) software. Because of the age and condition of the original printed copy, the OCR may not recognise certain characters or figures accurately. Caution should therefore be taken when searching or copying text from this PDF publication.

HONG KONG 1 9 9 1 POPULATION CENSUS

Basic Tables for District Board Districts

一九九一年人口普查
有關各區議會分區的基本統計表



Hong Kong 1991 Population Census

Basic Tables for District Board Districts

一九九一年人口普查
有關各區議會分區的基本統計表

Census Planning Section
Census and Statistics Department, Hong Kong
香港政府統計處 人口普查策劃組

2/F Koway Court, 111 Chai Wan Road, Chai Wan, Hong Kong. Tel: 5151088
香港柴灣道111號高威閣二樓 電話：5151088

Contents

目錄

		<i>Page</i>	頁數
Foreword	序言	7	
Explanatory Notes	註釋	9	
Summary Statistics	簡要統計		
The Whole Territory	全港	34	
Marine	水上居民	34	
All Land Areas	陸上居民	34	
Hong Kong Island	香港島	35	
Kowloon and New Kowloon	九龍及新九龍	35	
The New Territories	新界	35	
Central and Western District	中西區	36	
Wan Chai District	灣仔區	36	
Eastern District	東區	36	
Southern District	南區	37	
Yau Tsim District	油尖區	38	
Mong Kok District	旺角區	38	
Sham Shui Po District	深水埗區	38	
Kowloon City District	九龍城區	38	
Wong Tai Sin District	黃大仙區	39	
Kwun Tong District	觀塘區	39	
Kwai Tsing District	葵青區	40	

Summary Statistics

簡要統計

Tsuen Wan District	荃灣區	40
Tuen Mun District	屯門區	40
Yuen Long District	元朗區	40
North District	北區	40
Tai Po District	大埔區	41
Sha Tin District	沙田區	41
Sai Kung District	西貢區	41
Islands District	離島區	41

Basic Tables

基本統計表

The Whole Territory	全港	44
Marine	水上居民	46
All Land Areas	陸上居民	48
Hong Kong Island	香港島	50
Kowloon and New Kowloon	九龍及新九龍	52
The New Territories	新界	54
Central and Western District	中西區	56
Wan Chai District	灣仔區	58
Eastern District	東區	60
Southern District	南區	62

Basic Tables	基本統計表	
Yau Tsim District	油尖區	64
Mong Kok District	旺角區	66
Sham Shui Po District	深水埗區	68
Kowloon City District	九龍城區	70
Wong Tai Sin District	黃大仙區	72
Kwun Tong District	觀塘區	74
Kwai Tsing District	葵青區	76
Tsuen Wan District	荃灣區	78
Tuen Mun District	屯門區	80
Yuen Long District	元朗區	82
North District	北區	84
Tai Po District	大埔區	86
Sha Tin District	沙田區	88
Sai Kung District	西貢區	90
Islands District	離島區	92
Glossary	詞彙表	95
Order Form for Publications on the 1991 Population Census	一九九一年 人口普查刊物 訂購表格	101



Foreword

This report presents the final results of the 1991 Population Census in respect of District Board districts.

It contains statistics organized in two parts: the "Summary Statistics" part which provides the population profile of each District Board district and the "Basic Tables" part which provides information on the detailed characteristics of the population in each District Board district.

The 1991 Population Census comprised a 100% enumeration of all persons by age and sex and a one-in-seven sample enquiry on a broad range of demographic and socio-economic characteristics of the population. All households in Hong Kong were enumerated during the ten-day period from 15 to 24 March 1991. The Census results provide a snapshot of the size and characteristics of the population on the Census reference date of 15 March 1991.

District Board districts are declared by the Governor-in-Council for District Board elections. The maps showing the boundaries of District Board districts are contained in another Census publication entitled "Boundary Maps Complementary to Tabulations for District Board Districts and Constituency Areas".

Another report on the geographical breakdown of the Census results, entitled "Basic Tables for Tertiary Planning Units", will be published at the same time with this report. That report consists of three separate volumes covering Hong Kong Island, Kowloon and New Kowloon and the New Territories respectively. More detailed statistics and analysis of the Census results covering the whole of Hong Kong will be available in the publications "Main Tables" and "Main Report" which will be released later this year.

Frederick W.H. HO
Commissioner for Census & Statistics

May 1992

序言

本報告載列一九九一年人口普查按區議會分區劃分的結果。

報告內容分為兩部份，第一部份「簡要統計」顯示各區議會分區的主要人口特徵，而第二部份「基本統計表」則載列各區議會分區的詳細人口資料。

一九九一年人口普查，從全民蒐集有關人口的年齡及性別資料；此外也包括一個抽樣統計調查，用抽樣方法選出一個七分之一的住戶樣本，以蒐集有關人口的社會及經濟特徵等詳細資料。在一九九一年三月十五日至二十四日的十天期間，訪問了本港所有住戶，以進行點算。普查的結果顯示在一九九一年三月十五日普查日時本港人口的數目和他們的特徵。

區議會分區乃由總督會同行政局就區議會選舉公佈。本處經已出版一套名為「區議會分區及選區統計表的附件——區域分界地圖」的地圖集，方便讀者查閱每一區議會分區的範圍。

另一本普查結果分區報告，名為「有關各規劃統計小區的基本統計表」，亦與本報告同時出版。該報告分為三冊，分別刊載香港島、九龍及新九龍和新界的資料。至於有關全港的詳細普查結果和分析，將會刊載於今年稍後出版的「主要統計表」及「主要報告」兩刊物內。

政府統計處處長何永煊

一九九二年五月

Explanatory Notes

Introduction

The 1991 Population Census comprised a 100% enumeration of all persons by age and sex and a one-in-seven sample enquiry on a broad range of demographic and socio-economic characteristics of the population. Data on the count of population, households and living quarters are obtained from the complete enumeration, whilst data on their detailed characteristics are provided by estimates derived from the sample enquiry. In preparing the tabulations, an adjustment has been made as necessary to allow for persons in non-contact households.

Structure of the report

The statistics are organized in two parts. The "Summary Statistics" part covers 25 data items on demographic, education, labour force and household characteristics, which together provide the population profile of each District Board district. Seven data items are based on the complete enumeration. These are numbers of residents, enumerated residents and domestic households, percentages of persons by age and average domestic household size. Other data items are based on the sample enquiry.

The "Basic Tables" part provides information on the detailed characteristics of the population in each District Board district. Each of the basic tables is divided into two sections, namely "Statistics based on complete enumeration" and "Estimates based on sample enquiry". Information covered is outlined below:

Statistics based on complete enumeration:-

- . Type of living quarters
- . Household size
- . Age and sex of enumerated residents

Estimates based on sample enquiry:-

- . Household composition
- . Tenure of accommodation
- . Monthly household income
- . Monthly household rent
- . Usual language/dialect
- . Marital status
- . Educational attainment
- . Activity status
- . Occupation
- . Industry
- . Monthly income from main employment

It may be noted that the total numbers of living quarters, households and population given in the first section are obtained from the complete enumeration, whereas those given in the second section are based on estimates derived from the one-in-seven sample enquiry (please see footnote* for further explanation of the method).

Coverage of the report

The population figures covered in this report, other than the number of residents given in the "Summary Statistics" part, refer to the enumerated resident population of the whole territory, including 11 102 enumerated marine residents. The following categories of persons counted in the Census are not included in the report:

- (1) 151 833 residents who were temporarily away from Hong Kong on the Census reference date of 15 March 1991;
- (2) 35 823 transients; and
- (3) 51 847 Vietnamese migrants including Vietnamese refugees, Vietnamese migrants having been screened out and those pending determination of refugee status, ex-China Vietnamese illegal immigrants, Vietnamese migrants rescued by ocean-going vessels and children born in Hong Kong to the above categories of Vietnamese migrants.

The exception mentioned above, viz. the number of residents given in "Summary Statistics", refers to the entire resident population (i.e. all persons usually residing in Hong Kong including those temporarily away from Hong Kong on the Census reference date).

Living quarters covered in this report are those occupied on the Census reference date. The figures on households refer to domestic households, which accounted for 98.6% of the enumerated resident population. The rest of the population were in collective households. The 11 102 enumerated marine residents were staying on board of 2 179 vessels on the Census reference date. In this connection, no type of living quarters, rent and tenure statistics are available.

Constituency area statistics

All information contained in this report is also available by constituency area. Readers who are interested in such tabulations may contact the Census and Statistics Department direct.

* To achieve consistency between total counts obtained from the complete enumeration and estimates derived from the sample enquiry, the "ratio estimation" method is employed. (Readers interested in the details of this method may wish to refer to standard texts in survey sampling). Total counts at the District Board (DB) district level were chosen as controls when applying the method. The control process ensures that estimates derived from the sample for each DB district are consistent with the district total counts. However, in estimating the number of households by household composition for individual DB district based on the sample enquiry, the blow-up factors were derived from the district control totals with reference to type of living quarters instead of household size category. Therefore, the total count of households of "household size one" obtained from the complete enumeration and the total number of "one-person" households provided by estimates derived from the sample enquiry are not necessarily identical.

Bilingual presentation

This report is presented basically in bilingual form with the exception of "Basic Tables". There is at the end of the report a "Glossary" of the terms presented in the "Basic Tables" part given in both English and Chinese. This will facilitate readers who want to refer to the tables in Chinese.

Definition of terms (in alphabetical order)

- (1) **Activity Status:** This refers to the economic activity status of a person. Population can be divided into two main groups, economically active population (i.e. the labour force) and economically inactive population as follows:

Economically active population: This comprises the employed (i.e. the working population) and the unemployed.

The working population refers to persons aged 15 and above who performed some work for wage/salary or were on leave/holiday during the seven days before enumeration in the 1991 Population Census. The working population can be distinguished into:

Self-employed: A person who works on his own account, neither employed by someone else nor employing others.

Employer: A person who works on his own account and employs one or more persons to work for him.

Employee: A person who works for wage/salary in local/overseas government, private company or government subsidized organization. Domestic helpers working for wage are included in this category.

Unpaid family worker: A person who lives with his family and does work (not domestic work) as part of the family enterprise in return for food and lodging.

The unemployed persons refer to persons aged 15 and above and not of independent means who were not at work during the seven days before enumeration in the Census but were seeking work and available for work. This excludes those who were on leave/holiday during the reference period.

Economically inactive population: This refers to persons who did not have a job and were not at work during the seven days before enumeration in the Census, excluding persons who were on leave/holiday during the seven-day period and persons who were unemployed. Included in this category are home-makers, students, persons of independent means, retired persons and other economically inactive persons.

Home-maker: A person who looks after the home without pay.

Student: A person who is studying full-time in school or other educational institution. Persons who are self-studying, or studying informal courses in miscellaneous training institutes or studying evening courses and were not working during the seven days before the enumeration of the Census are also included in this category. Student workers are classified as economically active persons and are not included in this group.

Of independent means: A person who does not have to work for a living. The cost of living is generally borne by rental receivables, savings, investment returns or remittances.

Retired person: A person who has worked previously but is not currently working because of old age.

Other economically inactive: Economically inactive persons not elsewhere classified, e.g. unpaid religious workers and persons who cannot work or do not seek work because of sickness or disablement.

- (2) **Age:** This is the number of complete years a person has passed since birth.
- (3) **Attending School:** Persons attending full-time schools or educational institutions.
- (4) **Average Domestic Household Size:** This refers to the average number of persons per domestic household. It is calculated by dividing the total number of persons who were found in domestic households on the Census reference date by the total number of domestic households.
- (5) **Constituency Areas:** These geographical areas are declared by the Governor-in-Council under the Electoral Provisions Ordinance, Chapter 367 on 24 July 1990 for District Board elections. There is a total of 210 constituency areas: 39 on Hong Kong Island; 69 in Kowloon and New Kowloon and 102 in the New Territories. For the purpose of the 1991 Population Census, population by constituency area refer to persons living on land only, i.e. persons enumerated on board marine vessels are excluded.
- (6) **District Board Districts:** These geographical districts are declared by the Governor-in-Council under the District Board Ordinance, Chapter 366 on 24 July 1990 for District Board elections. There is a total of 19 districts: 4 on Hong Kong Island; 6 in Kowloon and New Kowloon and 9 in the New Territories. For the purpose of the 1991 Population Census, population by District Board district refer to persons living on land only, i.e. persons enumerated on board marine vessels are excluded.
- (7) **Domestic Household:** A domestic household consists of a group of persons who live together and make common provision for essentials for living. These persons need not be related. If a person makes provision for essentials for living without sharing with other persons, he is also regarded as a household. In this case the household is a one-person household.

- (8) **Educational Attainment:** This refers to the highest level of education ever attained by a person in school or other educational institution, regardless of whether he had completed the course. Only formal courses are counted as educational attainment. A formal course shall be one that lasts for at least one academic year, requires specific academic qualifications for entrance (with the exception of the degree courses offered by the Open Learning Institute of Hong Kong) and includes examinations for assessment purpose. The different levels of educational attainment are as follows:

No schooling: Including those who had never attended a formal course.

Kindergarten: Including all classes in kindergarten.

Primary: Including Primary 1 - 6 in all schools.

Lower secondary: Including Middle 1 - 3 in Chinese schools or Form 1 - 3 in English or Anglo-Chinese schools.

Upper secondary: Including Middle 4 - 5 in Chinese schools or Form 4 - 5 in English or Anglo-Chinese schools, and craft/apprenticeship courses in technical institutes.

Matriculation: Including Middle 6 in Chinese schools or Form 6 - 7 in English or Anglo-Chinese schools.

Tertiary (Non-degree courses): Including all certificate/diploma and higher diploma/endorsement certificate courses in technical institutes/polytechnics, associateship and other non-degree courses in polytechnics and other post-secondary colleges. Certificate/diploma courses in colleges of education and in the Hong Kong Technical Teachers' College and nurse training course are also included in this category.

Tertiary (Degree courses): Including all first degree courses and post-graduate courses in tertiary educational institutions in Hong Kong and overseas.

- (9) **Enumerated Residents:** These refer to those residents who were present in Hong Kong on the Census reference date of 15 March 1991. It does not include transients, Vietnamese migrants and residents who were temporarily away from Hong Kong on that date.
- (10) **Households Composed of No Nuclear Family:** These include one-person households, households with related persons forming no nuclear family and households composed of unrelated persons. Please also see the definition of **Household Composition** in (13).
- (11) **Households Composed of One Nuclear Family:** These include households composed of either one unextended nuclear family, one vertically extended nuclear family or one horizontally extended nuclear family. Please also see the definition of **Household Composition** in (13).
- (12) **Households Composed of Two or More Nuclear Families:** These include households composed of two or more nuclear families whose members may or may not be related in any way. Please also see the definition of **Household Composition** in (13).

(13) Household Composition: Household composition is derived from the information on relationship to the head of household of each person and the identification of spouse and parent-child relationships among members who were found in the household on the Census reference date. It shows the structure of a household in terms of the number of family nuclei and the relationship between a family nucleus and other related household members. A family nucleus is a married couple without children, a married couple with one or more never married children or one parent (either father or mother) with one or more never married children. The different categories of household composition are as follows:

One person: A household which has only one person found in the household on the Census reference date.

One unextended nuclear family: A household comprising one family nucleus without other related persons.

One vertically extended nuclear family: A household comprising one family nucleus with one or more related persons not of the same generation. It may or may not include other related persons of the same generation.

One horizontally extended nuclear family: A household comprising one family nucleus with one or more related persons of the same generation but without any other related persons of a different generation.

Two or more nuclear families: A household comprising two or more family nuclei whose members may or may not be related in any way.

Related persons forming no nuclear family: A household comprising related persons who do not form a family nucleus.

Unrelated persons: A household comprising unrelated person(s) with or without one or more related person(s) who do not form a family nucleus.

In the part "Summary Statistics", domestic households are classified into broader categories of household composition which include: (a) households composed of no nuclear family, (b) households composed of one nuclear family and (c) households composed of two or more nuclear families. Their corresponding definitions are given respectively in (10), (11) and (12) above.

For the 1981 and 1991 Population Censuses, household composition was derived based on the relationship of all persons who were found to be in the household on the Census reference date, whereas for the 1986 By-Census it was based on the relationship of all persons who usually lived in the household.

(14) Household Size: This refers to the number of persons found in the household on the Census reference date.

(15) Industry: This refers to the main kind of goods or services produced by the establishment in which a person worked during the seven days before enumeration in the Census. The classification used follows the major divisions of the Hong Kong Standard Industrial Classification (1991). The coverage of the industrial sectors presented in the table are defined as follows:

Manufacturing: Including spinning of cotton and other yarn, weaving and knitting of cotton and other fabrics; bleaching, dyeing, finishing; manufacturing of wearing apparel, knitwear and other made-up textile goods, carpets, cordages, ropes and twines, food, beverage, tobacco, footwear, leather products, rubber products, plastic products, wood products, printed matters and paper products, metal products, machinery, chemicals, chemical products, glass and pottery.

Construction: Including building construction, civil engineering, plumbing, electrical wiring, air-conditioning installation and repair.

Wholesale, retail and import/export trades, restaurants and hotels: Including wholesale and retail trade; import and export trade; peddlers; Chinese general brokers; other commercial agents; restaurants; cafes; hotels and rooming houses.

Transport, storage and communication: Including land transport, water transport and air transport; services allied to transport; storage and warehousing; and post and telecommunications.

Financing, insurance, real estate and business services: Including financing; insurance; real estate; offices of lawyers, accountants, auditors, architects, surveyors and advertising agents; data processing services and chambers of commerce and trade unions.

Community, social and personal services: Including government services; the armed forces; educational service; medical, dental and other health services; sanitary services; welfare institutions; religious organizations; cinemas and theatres; radio and television broadcasting; libraries and museums; electrical repair shops; automobile repair garages and other household and personal services.

Other industries: Including such industries as "Agriculture and fishing"; "Mining and quarrying"; "Electricity, gas and water" and industrial activities inadequately described or unclassifiable.

In the part "Summary Statistics", the percentages of working population in the "Secondary Sector" and "Tertiary Sector" are presented separately; their definitions are given respectively in (27) and (29) below.

(16) Labour Force Participation Rate: The percentage of economically active population (i.e. the labour force) in the total population aged 15 and over.

(17) Marital Status: The marital status of a person was recorded according to the status reported by respondents in the Census. There was no check on whether the marriage or divorce had undergone any legal registration or ceremony.

- (18) **Median Monthly Household Income:** The average monthly household income so calculated that 50 per cent of the total number of domestic households had income above this figure and the other 50 per cent had income below it.
- (19) **Median Monthly Income (from Main Employment) of Working Population:** The average monthly income from main employment so calculated that 50 per cent of the working population excluding unpaid family worker had income above this figure and the other 50 per cent had income below it.
- (20) **Monthly Household Income:** This refers to the total income (including earnings in cash from all employments and other cash incomes) for February 1991 of all persons who were found to be in the household on the Census reference date.
- (21) **Monthly Household Rent:** This is the amount paid by a household for occupying an accommodation in March 1991. It includes rates for that month but excludes payment for water, electricity and management fee. For a main tenant, rent is the net amount he paid after deducting the rent he received from his sub-tenant(s) for subletting part of the quarters. Zero rent households include households living in their owned quarters, households living in accommodation of friends or relatives without paying any rent with or without permission, and those households whose quarters were provided free by employers or for main tenant with total rental receipts from sub-tenant(s) greater than or equal to rent paid.
- (22) **Monthly Income from Main Employment:** For employers or self-employed persons, this is the amount earned excluding expenses incurred in running their main business. For employees, this is the total amount earned from their main employment including salary or wage, bonus, commission, overtime, housing allowance, tips and other cash allowances. New Year bonus and double pay are excluded. The amount recorded refers to the income for February 1991.
- (23) **Non-student Population Aged 20 and Over:** It refers to those enumerated residents aged 20 and over who were not studying full time.
- (24) **Occupation:** This refers to the kind of work a person performed during the seven days before enumeration in the Census. The classification basically follows the major groups of the International Standard Classification of Occupations (1988) with local adaptation in Hong Kong.

Managers and administrators: Including administrators, commissioners and directors in government service; consuls; councillors; directors, chief executive officers, presidents, general managers, functional managers, branch managers and small business managers in industry, commerce, import and export trade, wholesale and retail trade, catering and lodging services, transport, electricity, gas, water and other services and agricultural and fishery sectors.

Professionals: Including qualified professional scientists, doctors, dentists and other medical professionals; architects, surveyors and engineers; vice-chancellors, directors, academic staff and administrators of university, polytechnic and post-secondary college; principals and teachers of secondary school; statisticians; mathematicians; system analysts and computer programmers; lawyers and judges; accountants; business consultants and analysts; social workers; translators and interpreters; news editors and journalists; writers; librarians and members of religious orders.

Associate professionals: Including science technicians, nurses and midwives, dental assistants and other health associate professionals; architectural, surveying and engineering technicians; optical and electronic equipment controllers; ship pilots and air traffic controllers; principals and teachers of primary and pre-primary school; statistical assistants; computer operators; law clerks; accounting supervisors; public relation officers; sales representatives; designers; estate managers; social work assistants; superintendents, inspectors and officers of the police and other discipline services; performers and sportsmen.

Clerks: Including stenographers, secretaries and typists; bookkeeping, finance, shipping, filing and personnel clerks; cashiers and tellers; receptionists and information clerks.

Service workers: Including air hostesses and travel guides; house stewards; cooks and waiters; baby-sitters; hairdressers and beauticians; rank and file of the police and other discipline services; transport conductors and other service workers.

Shop sales workers: Including wholesale and retail salesmen in shops; shop assistants and fashion models.

Skilled agricultural and fishery workers: Including farm workers, animal husbandry workers and fishermen.

Craft and related workers: Including miners and quarrymen; bricklayers, carpenters and other construction workers; metal moulders; blacksmiths; machinery, electric and electronic instrument mechanics; jewellery workers and watch makers; potters; typesetters; bakers, food and beverage processors; painters; craft workers in textile, garment, leather, rubber and plastic trades and other craft workers.

Plant and machine operators and assemblers: Including well drillers and borers; ore smelting furnace operators; brick and tile kilnmen; sawmill sawyers; paper makers; chemical processing plant operators; power-generating plant and boiler operators; asbestos cement products makers; metal finishers and electroplaters; dairy and other food processing machine operators; printing machine operators; machine operators for production of textile, rubber and plastic products; assemblers; drivers; seamen and other plant and machine operators.

Elementary occupations: Including street vendors; domestic helpers and cleaners; messengers; private security guards; watchmen; freight handlers; lift operators; construction labourers; hand packers; agricultural and fishery labourers.

Armed forces and occupations not classifiable: Including members of the armed forces and occupations unidentifiable and inadequately described.

(25) **Occupied Living Quarters:** Living quarters include (a) units of accommodation which are built for residential purpose irrespective of whether there are anybody living there; and (b) quarters which are built for non-residential purposes but normally had one or more persons living there or were occupied on the Census reference date. Figures in this report refer to occupied living quarters, i.e. living quarters with occupants present on the Census reference date irrespective of their usage.

(26) **Residents:** These refer to the residents who usually lived in Hong Kong, those residents who were temporarily away from Hong Kong on the Census reference date of 15 March 1991 are also included.

(27) **Secondary Sector:** This includes three major industries namely "Manufacturing", "Electricity, gas and water" and "Construction".

(28) **Tenure of Accommodation:** This is the terms or conditions under which the accommodation is held by a household. The different terms are defined as follows:

Owner-occupier: A household which owns the living quarters it occupies.

Sole tenant: A household which rents the whole living quarters it occupies from someone who lives outside the living quarters without sharing it with other household(s) or subletting.

Co-tenant: Two or more households each rents part of a living quarters from someone who lives outside the living quarters.

Main tenant: A household which rents the whole living quarters it occupies from someone who lives outside the living quarters and sublets it to other household(s).

Sub-tenant: A household which rents part of a living quarters from someone who lives in the same living quarters.

Rent free: A household which occupies an accommodation free, with or without the owner's permission. This excludes households occupying accommodation provided by employers.

Provided by employer: A household occupies an accommodation provided by the employer of one of the household members. This also includes households occupying living quarters leased from employers at a nominal rent. If a household member uses housing allowance given by his employer for renting accommodation, the tenure is not considered as provided by employer.

(29) **Tertiary Sector:** This includes four major industries namely "Wholesale, retail and import/export trades, restaurants and hotels", "Transport, storage and communication", "Financing, insurance, real estate and business services" and "Community, social and personal services".

(30) **Total Labour Force:** Please see Activity Status in (1).

(31) **Transients:** They are the persons staying in hotels/boarding houses or on board ocean-going vessels/coasters in Hong Kong waters on the Census reference date of 15 March 1991. They must not be usual residents of Hong Kong.

(32) **Type of Living Quarters:** Living quarters are classified according to the type of building in which the living quarters are located. The buildings are classified by the type of construction materials; the purpose for which they are built; and the sector responsible for their construction/management.

Permanent housing

Housing Authority rental blocks (Group A): These are Government Low Cost Housing Blocks under the management of the Hong Kong Housing Authority. Units in these blocks are self-contained. Converted Mark I to Mark III blocks are also grouped under this category.

Housing Authority rental blocks (Group B): These are buildings formerly managed by the Resettlement Department but put under the management of the Hong Kong Housing Authority since 1973. They can be further divided into Mark I to Mark VI estates. Units in Mark I to Mark III estates are not self-contained.

Housing Society rental blocks: These are rental blocks built and managed by the Hong Kong Housing Society.

Housing Authority home ownership estates: These are estates built under the Home Ownership Scheme or the Private Sector Participation Scheme of the Hong Kong Housing Authority.

Private housing blocks: These include tenements, apartments and all multi-storey blocks of private flats built mainly for residential purpose. Urban Improvement Scheme blocks of the Hong Kong Housing Society are also classified under this category. Private housing blocks are dichotomized as follows according to the availability of internal facilities:

Self-contained: Living quarters with internal piped water supply and a flush toilet system.

Non self-contained: Living quarters without internal piped water supply and a flush toilet system.

Villas/Bungalows/Modern village houses: These are houses of one to three storeys built with full facilities like bathroom and internal piped water supply.

Simple stone structures: They are houses built of stones and/or other permanent materials usually of one storey high which are not equipped with facilities like internal piped water supply and a flush toilet system. Traditional village houses are also grouped under this category.

Institutions: These include hospitals, prisons, old people's homes, religious houses and British forces barracks.

Other permanent housing: This includes hotels, hostels, staff quarters buildings and other non-domestic buildings like offices, factories, clinics, etc.

Temporary housing

Roof-top structures: Structures built with non-permanent material on the roof-top of a permanent building.

Other temporary housing: This includes Hong Kong Housing Authority cottages and temporary huts, and such private temporary housing as contractor's matsheds, nissen huts, derelict boats, huts and places not intended for residential purpose (e.g. landings, staircases, corridors, etc.) but were occupied on the Census reference date.

(33) **Usual Language/Dialect:** This refers to the usual language/dialect the enumerated resident used in daily communication at home. This is not applicable to persons aged under 5 or dumb persons.

(34) **Vietnamese Migrants:** These include Vietnamese refugees; Vietnamese migrants having been screened out and those pending determination of refugee status; ex-China Vietnamese illegal immigrants; Vietnamese migrants rescued by ocean-going vessels; and children born in Hong Kong to the above categories of Vietnamese migrants.

Conventions

The following symbols are used in the tables:

- "—" signifies nil;
- ".." signifies not applicable; and
- "0.0" signifies less than 0.05 but not zero.

註釋

引言

一九九一年人口普查包括一項就全港人士進行的全面點算以及一個抽樣統計調查。全面點算蒐集有關人口的年齡和性別資料，而抽樣統計調查是從本港所有的住戶中選出一個七分之一的樣本，以蒐集有關人口的社會及經濟特徵等詳細資料。本報告內有關人口、住戶及屋宇單位的總數，是由全面點算所得，而有關它們的特徵的詳細資料，則經由抽樣統計調查估算所得。本處在匯總時，已就無法接觸的住戶及其居民作出估算。

報告結構

報告內容分為兩部份，「簡要統計」部份包括二十五項統計數字，顯示每一區議會分區的人口、教育、勞動人口及住戶的主要特徵。其中居民總數、實際點算居民人數、家庭住戶數目、人口按年齡組別分佈百分率及家庭住戶平均人數等七項統計數字乃來自全面點算，其餘的則經由抽樣統計調查獲得。

「基本統計表」部份載列每一區議會分區內人口的詳細資料。這些統計表分為「根據全面點算所得統計數字」及「根據抽樣統計調查所作估算」兩個組別，其中包括的資料有以下項目：

根據全面點算所得統計數字：

- 屋宇單位類型
- 家庭住戶人數
- 實際點算居民人數的年齡及性別

根據抽樣統計調查所作估算：

- 住戶結構
- 居處租住權
- 住戶每月收入
- 住戶每月租金
- 習用語言 / 方言
- 婚姻狀況
- 教育程度
- 經濟活動身份
- 職業
- 行業
- 每月主業收入

第一組內所刊載的屋宇單位、住戶及人口總數，是由全面點算所得，而第二組內所刊載的數字，則經由抽樣統計調查估算所得（有關估算方法的詳細解釋請參閱本頁註腳*）。

報告範圍

本報告所刊載的數字，除「簡要統計」部份內的居民總數外，都是指全港的實際點算居民，包括11 102名水上居民，下列各類人士並不包括在本報告內：

- (一) 在普查日（即一九九一年三月十五日）暫時離港的 151 833 名居民；
- (二) 35 823 名過境旅客；及
- (三) 51 847 名越南船民，包括越南難民、已甄別為非難民及等待甄別的越南船民、從中國來港的越南非法入境者、由遠洋輪船援救的越南船民，及以上各類越南難民 / 船民在本港出生的兒童。

上述「簡要統計」部份內的居民總數是指全港居民（即所有通常居港人士，包括在普查日暫時離港的居民）。

本報告包括在普查日所有有人居住的屋宇單位。住戶數目是指家庭住戶，佔實際點算居民人數百分之九十八點六，其餘的人口居住在團體住戶內。在普查日有11 102名水上居民住在 2 179 艘船上。本報告內所刊載的屋宇單位類型、租金及租住權等資料項目並不適用於水上居民。

區議會選區統計數字

本報告所有的資料可按區議會選區匯總，讀者如有需要，可與本處聯絡。

* 在進行估算時採用了「比率估計」方法，使由全面點算所得的數字與經由抽樣統計調查估算所得的一致。（讀者若有興趣進一步瞭解這方法，請參考一般有關抽樣統計調查的書籍）。採用這方法時，區議會分區的總計用作參考總數，確保了從各區議會分區經由抽樣統計調查估算所得的總計與其分區點算所得的總計吻合。但在估算每個區議會分區按住戶結構劃分的住戶數目時，所採用的放大倍數是以屋宇單位類型而非住戶人數分組為依據。因此，由全面點算所得的「一人住戶」數目與經由抽樣統計調查估算所得的「單人住戶」數目並不一定相同。

中英對照

本報告內容除「基本統計表」外，均以中英文對照印行。本報告末附加「詞彙表」方便讀者以中英文相互對照「基本統計表」內的詞彙。

詞彙釋義（為方便中英文對照，以下次序乃按英文詞彙的次序編排）

- (1) 經濟活動身份：指某人的經濟活動身份。人口可劃分為兩大類：從事經濟活動人口（即勞動人口）及非從事經濟活動人口。

從事經濟活動人口：包括在職人士（即工作人口）及失業人士。

工作人口是指十五歲及以上做一些工作賺取工資／薪金的人，或在一九九一年人口普查進行統計之前七天內正在休假的人。工作人口可劃分為：

自營作業者：是指個人從事自己工作的人，沒有僱用他人，亦非受僱於人。

僱主：是指個人從事自己的工作及僱用一人或多人替其工作的人。

僱員：在本港／海外政府，私人公司或政府資助機構賺取工資／薪金工作的人。為賺取工資而工作的家務助理也包括在內。

無酬家庭從業員：與家人同住並從事作為家庭企業一部份的（非家務）工作，以換取食物和住所。

失業人士是指十五歲及以上而非經濟自給的人。這些人在一九九一年人口普查進行統計之前七天並無工作，但正在找尋工作並可立即上工。這並不包括那些在統計期間正在休假的人。

非從事經濟活動人口：指沒有一份工作及在人口普查進行統計之前七天內沒有工作的人，但不包括在這七天期內正在休假及失業的人。這類人口包括料理家務者、學生、經濟自給者、退休人士及其他非從事經濟活動人士。

料理家務者：照顧家庭而並無賺取報酬的人。

學生：在學校或其他教育院校攻讀全日制課程的人、自修或在各類訓練學校修讀非正式課程或修讀夜間課程，而在人口普查進行前七天並無工作者亦歸入此類別。（兼職學生歸入從事經濟活動人士，故並不包括在此類別內。）

經濟自給者：無須為生計而工作的人士。他們的生活費通常依靠收租、儲蓄、投資收益或匯款等。

退休人士：以前有工作但現時因年老而沒有繼續工作的人。

其他非從事經濟活動人士：包括從事無酬的教會工作者、因長期患病或傷殘而不能工作或找尋工作的人。

- (2) 年齡：指某人出生後所度過的完整年數。
- (3) 就學：指在學校或其他教育機構就讀全日課程。
- (4) 家庭住戶平均人數：即每個家庭住戶的平均人數。計算方法是將人口普查日的家庭住戶實際點算居民人數除以家庭住戶總數。
- (5) 區議會選區：區議會選區乃由總督會同行政局就區議會選舉，於一九九零年七月二十四日根據香港法例第367章選舉規定條例公佈。全港共有區議會選區210個：港島39個、九龍及新九龍69個，以及新界102個。一九九一年人口普查中，按各區議會選區分佈的人口數字僅指陸上居民，並不包括水上居民。
- (6) 區議會分區：區議會分區乃由總督會同行政局就區議會選舉，於一九九零年七月二十四日根據香港法例第366章區議會條例公佈。全港共有19個區議會分區：港島4個、九龍及新九龍6個，以及新界9個。一九九一年人口普查中，按各區議會分區分佈的人口數字僅指陸上居民，並不包括水上居民。
- (7) 家庭住戶：這是指一羣住在一起及分享生活所需的人士，他們之間不一定有親屬關係。自己單獨安排生活所需的個別人士亦當為一戶，即「單人住戶」。
- (8) 教育程度：某人在學校或其他教育機構所達到的最高教育水平，無論他是否已完成該項課程。計算教育程度時，只包括正式課程。正式課程最少為期一學年，入學有特定的學歷資格規定（香港公開進修學院所主辦的學位課程則例外），課程必須包括考試作評分用。教育程度分類如下：

未受教育：包括從未修讀過正式課程的人士。

幼稚園：包括所有幼稚園班級。

小學：包括所有小學的一年級至六年級。

初中：包括中文中學一至三年級或英文中學 / 中英文中學一至三年級。

高中：包括中文中學四至五年級或英文中學 / 中英文中學四至五年級，以及工業學院的工藝 / 學徒課程。

預科：包括中文中學六年級或英文中學 / 中英文中學六至七年級。

專上教育（非學位課程）：包括工業學院 / 理工學院的所有證書 / 文憑及高級文憑 / 增修證書課程、理工學院及其他專上學院的院士銜和其他非學位課程。教育學院、香港工商師範學院的證書 / 文憑課程及護士訓練課程亦包括在內。

專上教育（學位課程）：包括所有在香港及海外專上學院的學士學位課程及研究院課程。

- (9) 實際點算居民人數：於人口普查日（即一九九一年三月十五日）在港的居民人數，但不包括過境旅客、越南船民及暫時不在港的居民。
- (10) 由無核心家庭組成的住戶：包括「單人住戶」、「無核心家庭但有親屬關係人士住戶」及「無親屬關係人士住戶」。請參看第(13)項「住戶結構」釋義。
- (11) 由一個核心家庭組成的住戶：包括由「未擴展的單核心家庭」、「垂直擴展的單核心家庭」或「平向擴展的單核心家庭」所組成的住戶。請參看第(13)項「住戶結構」釋義。
- (12) 由多個核心家庭組成的住戶：由兩個或以上核心家庭組成的住戶，其成員可以有或沒有親屬關係。請參看第(13)項「住戶結構」釋義。
- (13) 住戶結構：住戶結構類別是根據人口普查日在住戶內各人與戶主關係以及他們之間的配偶、父母、子女等關係的資料而確定。住戶結構顯示家庭核心數目及家庭核心與其他有關住戶成員之間的關係。家庭核心是指一對無子女的夫婦、有一名或以上未婚子女的夫婦、或有一名或以上未婚子女的單親（父親或母親）。住戶結構類型如下：

單人住戶：在人口普查日只有一人的住戶。

未擴展的單核心家庭住戶：只有一個家庭核心而無其他親屬組成的住戶。

垂直擴展的單核心家庭住戶：由一個家庭核心及一名或以上不同代的親屬組成的住戶。這類住戶可包括或不包括其他屬同一代的親屬。

平向擴展的單核心家庭住戶：由一個家庭核心及一名或以上屬同一代的親屬組成的住戶。這個住戶中沒有其他屬於另一代的親屬。

多個核心家庭住戶：由兩個或以上家庭核心組成的住戶，其成員可以有或沒有親屬關係。

無核心家庭但有親屬關係人士住戶：由一羣有親屬關係但未能形成一個家庭核心的人士所組成的住戶。

無親屬關係人士住戶：由一羣無親屬關係人士組成的住戶。這類住戶可包括或不包括一些有親屬關係的成員，但此等成員未能形成一個家庭核心。

在「簡要統計」部份內，家庭住戶被分為三大類，分別為（甲）由無核心家庭組成的住戶、（乙）由一個核心家庭組成的住戶及（丙）由多個核心家庭組成的住戶。請依次序參看釋義的第(10)、(11)及(12)項。

在一九八一及一九九一年人口普查中，住戶結構類別是以在人口普查日所有在該住戶內人士的關係為依據。但在一九八六年中期人口統計中，住戶結構類別則是以通常在該住戶居住的各人士的關係為依據。

(14) 住戶人數：在人口普查日該住戶的人數。

(15) 行業：指在人口普查進行統計之前七天內某人所工作的機構所生產的主要貨品或服務類別。所使用類別是依照「香港標準行業分類法（一九九一）」的主要分類。表中所列行業包括的範圍如下：

製造業：包括棉及其他紗線紡織、棉及其他布料的梭織及針織、漂染、印染、整理、衣著用品製造、針織及其他紡織製成品、地氈、繩索、細繩、食品、飲品、煙草、鞋履、皮革製品、橡膠製品、塑膠製品、木製品、印刷品、紙品、金屬製品、機械、化學品、化學產品、玻璃及陶器。

建造業：包括樓宇建造、土木工程、敷設水管、敷設電線、安裝及維修冷氣系統。

批發、零售及出入口業、酒樓及酒店業：包括批發及零售業、進出口業、小販、非固定行業的經紀、其他商業代理人、酒樓、咖啡室、酒店及旅舍。

運輸、倉庫及通訊業：包括陸路運輸、海上運輸及空運業、運輸業的附帶服務、貨棧及倉庫、郵政及電訊業。

金融、保險、地產及商業服務業：包括金融、保險、地產；律師、會計師、核數師、建築師、測量師及廣告公司的辦事處；資料處理服務、商會及工會。

社區服務、社會服務及個人服務業：包括政府服務、軍人、教育服務、醫療、牙科及其他保健服務、衛生服務、福利機構、宗教團體、電影院及劇院、電台及電視台、圖書館及博物館、電器修理店、車輛維修店以及其他家庭及個人服務。

其他行業：包括「漁農業」、「礦業及採石業」、「電力、煤氣及水務業」等行業，及報稱的行業不能分類或描述不足。

在「簡要統計」部份內，發表了「第二產業」及「第三產業」各佔工作人口總數的百分率，這兩大類產業所包括的主要行業詳列於釋義的第(27)及(29)項。

- (16) 勞動人口參與率：從事經濟活動人口（勞動人口）數目與年齡在十五歲及以上人口數目的百分率。
- (17) 婚姻狀況：這是指被訪者在人口普查日所報稱的婚姻狀況，而有關的婚姻或離婚事件是否有經過任何合法註冊或儀式，普查訪問時並未有進行核查。
- (18) 住戶月入中位數：這是住戶每月收入的一種平均值，住戶總數有百分之五十的收入在這個數字之上，而其餘百分之五十的收入在這數字之下。
- (19) 工作人口每月主業收入中位數：這是每月主業收入的一種平均值，有百分之五十的工作人口（無酬家庭從業員除外）的收入高於這個數字，而其餘百分之五十的收入則低於這個數字。
- (20) 住戶每月收入：指在人口普查日在該住戶所有人士的總收入（包括一九九一年二月由所有工作獲得的現金收入及其他現金入息）。
- (21) 住戶每月租金：住戶在一九九一年三月為其居所所付的租金金額，包括該月的差餉，但不包括水費、電費及管理費。二房東的租金，為減去分租給三房客所獲租金之後的淨額。租金金額是零的住戶包括居住在自置單位的住戶、無論是否得到許可，住在親友家中而免交租金的住戶、由僱主免費提供住所的住戶及二房東向三房客所收的租金總值超過或相等於大租。
- (22) 每月主業收入：對僱主或自營作業者而言，這是指他們在扣除經營主要業務的開支後賺取的金額。至於僱員的主業收入，則是他們從主要工作所獲得的全部收入，包括薪金或工資、花紅、佣金、逾時工作補薪、房屋津貼、小賬以及其他現金津貼。新年花紅/雙糧則不包括在內。所記錄金額是指一九九一年二月的收入。
- (23) 二十歲及以上的非就學人口：指年齡二十歲及以上而並非在學就讀全日課程的實際點算居民。

(24) 職業：這是指在人口普查進行統計之前七天內某人所做的工作種類。分類方法基本上是按照「國際標準職業分類法（一九八八）」的主要組別進行，並略為編改以適應香港的情況。

經理及行政級人員：包括政府的行政人員、專員及署/處長、領事、議員、工商界、出入口貿易、批發和零售業、飲食及旅店業、運輸、電力、煤氣及水務業和其他服務及漁農業中的董事、執行總監、總裁、總經理、專職經理、分行經理及小型機構經理。

專業人員：包括合資格的專業科學家、醫生、牙醫及其他醫療專業人員、建築師、測量師及工程師、大學、理工學院及專上學院的校長、院長、教員及行政人員、中學校長及教師、統計師、數學家、電腦系統分析員及程序編寫員、律師及法官、會計師、商業顧問及分析員、社會工作者、翻譯者及傳譯員、新聞編輯、新聞記者及作家、圖書館管理員及宗教活動專業人員。

輔助專業人員：包括科學技術員、護士及助產士、牙科助理及其其他保健輔助專業人員、建築、測量及工程技術員、光學及電子儀器控制員、船隻領航員及空中交通指揮員、小學及學前教育學校的校長及教師、統計助理、電腦操作員、法律文員、會計督導員、公共關係主任、營業代表、設計師、屋邨經理、社會工作助理、警隊及其他紀律部隊的警司、督察及主任、藝人及運動員。

文員：包括速記員、秘書及打字員、簿記、金融、船務、存案及人事部文員、出納員及銀行櫃員、接待員及查詢文員。

服務工作人員：包括空中小姐及導遊、管家、廚師及侍應生、褸姆、理髮師及美容師、警隊及其他紀律部隊的員佐級人員、運輸指導員及其他服務工作人員。

商店銷售人員：包括批發及零售商店推銷員、店員及時裝模特兒。

漁農業熟練工人：包括農夫、畜牧業工人及漁夫。

工藝及有關人員：包括礦工及採石工人、砌磚工人、木匠及其他建造業工人、金屬模工、鐵匠、機械、電器及電子儀器技工、珠寶工人及手錶製造工人、製陶工人、排字工人、麵包師傅、食品及飲品處理工人、油漆工人、紡織、成衣、皮革、橡膠和塑膠行業的工人及其他工藝工人。

機台及機器操作員及裝配員：包括鑽井工人及鐘床操作員、礦熔爐操作員、磚及磁磚燒窯工人、鋸木廠工人、鋸工、造紙工人、化學處理機台操作員、發電廠及鍋爐操作員、石棉、水泥產品製造工人、金屬磨光工人及電鍍工人、牛奶製品及其他食品處理機器操作員、印刷機操作員、生產紡織、橡膠及塑膠製品的機器操作員、配員、司機、海員及其他工廠及機器操作員。

非技術工人：包括小販、家務助理及清潔工人、信差、私人護衛員、看更、貨運工人、電梯操作員、建造業雜工、包裝工人、漁農業雜工。

軍人及不能分類的職業：包括軍隊成員及報稱的職業不能分類或描述不足。

- (25) 有人居住的屋宇單位：這包括(甲)住宅單位，不論有沒有人居住及(乙)通常有人留宿，或在人口普查日有人居住的非住宅單位。本報告內的屋宇單位數字只包括在人口普查日有人居住的屋宇單位，不論該等單位的用途為何。
- (26) 居民人口：這是指通常居住在香港的居民，在一九九一年三月十五日人口普查日暫時不在港的居民亦包括在內。
- (27) 第二產業：包括「製造業」、「電力、煤氣及水務業」和「建造業」等三個行業。
- (28) 居處租住權：這是指居處是由住戶自置或租用，或是由僱主提供等。

自置：住戶擁有其居住的屋宇單位。

全租：住戶向不在該屋宇單位居住的人士租住整個屋宇單位，但不與其他住戶同住或分租。

合租：兩個或以上的住戶，每戶分別向不在該屋宇單位居住的人士租住屋宇單位的部份地方。

二房東：住戶向不在該屋宇單位居住的人士租住整個屋宇單位，及再將屋宇單位的部份地方分租予其他住戶。

三房客：住戶向居住在同一屋宇單位內的人士租住該屋宇單位的部份地方。

免租：住戶在已獲得或未獲得業主同意情況下免費居住在一屋宇單位，但不包括由僱主提供屋宇單位的住戶。

由僱主供給：住戶居住在由其成員之一的僱主所供給的屋宇單位，包括以象徵式租金向僱主租住屋宇單位的住戶。假如住戶使用由僱主提供的房屋津貼租住屋宇單位，則租住權不屬於「由僱主供給」類。

- (29) 第三產業：包括「批發、零售及出入口業、酒樓及酒店業」、「運輸、倉庫及通訊業」、「金融、保險、地產及商業服務業」和「社區服務、社會服務及個人服務業」等四個行業。

- (30) 總勞動人口：請參看第(1)項「經濟活動身份」釋義。
- (31) 過境旅客：在一九九一年三月十五日人口普查日住在酒店或賓館，或在香港水域的遠洋輪船／沿岸航行船隻上的人士。這些人士必須不是在香港長期居住的。
- (32) 屋宇單位類型：屋宇單位按照其所屬的建築物的類型而分類。這些建築物按照其建築材料種類、其用途及負責建築／管理的機構分類。

永久性房屋

房屋委員會甲類租住大廈：這些是由香港房屋委員會管理的政府廉租屋邨。這些大廈單位均有獨立設備。改建的第一型至第三型大廈亦屬此類別。

房屋委員會乙類租住大廈：這些建築物原本由徙置事務處管理，自一九七三年起改由香港房屋委員會管理。這些建築物可再劃分為第一型至第六型屋邨。第一型至第三型屋邨的屋宇單位並無獨立設備。

房屋協會租住大廈：這些租住大廈由香港房屋協會建築及管理。

房屋委員會居者有其屋計劃房屋：這些屋邨由香港房屋委員會的居者有其屋計劃及私人機構參與計劃安排建造。

私人住宅樓宇：包括唐樓、洋樓及主要作住宅用途的多層私人大廈。香港房屋協會的市區改善計劃房屋亦被列入此類別。按其屋內設備可再劃分為下列兩種類別：

有獨立設備的屋宇單位：擁有屋內食水供應及沖廁設備的屋宇單位。

無獨立設備的屋宇單位：屋內無食水供應及沖廁設備的屋宇單位。

別墅／平房／新型村屋：這些為一至三層高的房屋，屋內有浴室和食水供應等完善設備。

簡單磚石蓋搭建築物：這些房屋是用磚石及／或其他堅固材料建造，通常一層高而屋內並無食水供應及沖廁設備。傳統村屋亦屬此類別。

公共機構／社團院舍：包括醫院、監獄、老人院、宗教場所及英軍軍營。

其他永久性房屋：包括酒店、旅館、員工宿舍大廈及其他非住宅建築物，例如辦公室、工廠、診所等。

臨時房屋

天台建築物：在永久性房屋天台上，採用臨時性材料蓋搭的建築物。

其他臨時房屋：包括香港房屋委員會屬下平房和臨時木屋、建築地盤的棚屋、半圓形活動營房、荒廢船艇、木屋及非作住宅用途（例如梯台、樓梯、走廊等）但在人口普查日有人居住的地方。

- (33) 習用語言 / 方言：指某人在家裡與家人交談通常使用的語言 / 方言，但不適用於年齡在五歲以下兒童或失語人士。
- (34) 越南船民：包括越南難民、已甄別為非難民及等待甄別的越南船民、從中國來港的越南非法入境者、由遠洋輪船援救的越南船民，及以上各類越南難民 / 船民在本港出生的兒童。

代表符號

統計表中使用了下列符號：

“—” 代表零；

“..” 代表不適用；及

“0.0” 代表少於0.05但並非零

SUMMARY STATISTICS

簡要統計

The Whole Territory

Topics	The Whole Territory 全港	Marine 水上居民	All Land Areas 陸上居民
DEMOGRAPHIC CHARACTERISTICS			
Number of residents	5 674 114	17 620	5 656 494
Number of enumerated residents	5 522 281	11 102	5 511 179
Percentage of persons			
Under age 5	6.1	9.0	6.1
Aged 5-14	14.7	19.7	14.7
Aged 60 and over	13.0	6.2	13.0
Percentage of persons aged 25-34 never married			
Male	49.5	33.8	49.5
Female	32.6	10.6	32.6
Percentage of population born in Hong Kong	59.8	74.8	59.7
EDUCATION			
Percentage of persons aged 6-18 attending school	91.0	71.7	91.1
Percentage of non-student population aged 20 and over having tertiary education	10.7	0.1	10.7
LABOUR FORCE CHARACTERISTICS			
Total labour force	2 811 002	6 973	2 804 029
Labour force participation rate (%)			
Male	78.7	94.6	78.7
Female	49.5	77.6	49.5
Both sexes	64.3	88.1	64.3
Percentage of working population who were managers, administrators, professionals and associate professionals	23.1	0.4	23.2
Percentage of working population in			
Secondary sector	35.9	3.7	36.0
Tertiary sector	62.7	19.2	62.8
Median monthly income (from main employment) of working population (HK\$)	5,170	3,317	5,171
HOUSEHOLD CHARACTERISTICS			
Number of domestic households	1 582 215	2 143	1 580 072
Average domestic household size (persons per household)	3.4	5.1	3.4
Percentage of households composed of			
No nuclear family	21.1	15.3	21.1
One nuclear family	74.1	66.8	74.2
Two or more nuclear families	4.8	17.9	4.7
Percentage of households occupying living quarters they owned	42.6	..	42.6
Median monthly household income (HK\$)	9,964	8,155	9,967

Hong Kong Island 香港島	Kowloon and New Kowloon 九龍及新九龍	The New Territories 新界	統計項目
			人口特徵
1 250 993	2 030 683	2 374 818	居民總數
1 214 253	1 975 265	2 321 661	實際點算居民人數
			人口按下列年齡組別分佈百分率
5.6	5.1	7.3	五歲以下
12.8	12.3	17.8	五歲至十四歲
14.1	15.8	10.0	六十歲及以上
			二十五歲至三十四歲人士 從未結婚的百分率
51.8	58.9	40.2	男性
37.7	41.1	23.4	女性
58.0	55.4	64.3	本港出生人口百分率
			教育
92.0	90.4	91.2	六歲至十八歲人士就學百分率
18.0	9.3	7.9	二十歲及以上非就學人士具 專上教育程度百分率
			勞動人口特徵
654 792	1 034 792	1 114 445	總勞動人口
			勞動人口參與率(%)
79.1	77.3	79.8	男性
53.5	48.7	47.8	女性
66.1	63.4	64.0	合計
33.9	21.3	18.6	工作人口的經理、行政級、 專業及輔助專業人員百分率
			工作人口按下列產業分佈百分率
23.6	38.7	40.8	第二產業
75.3	60.8	57.3	第三產業
6,098	5,078	5,142	工作人口每月主業收入中位數 (港元)
			住戶特徵
357 129	587 259	635 684	家庭住戶數目
3.3	3.3	3.6	家庭住戶平均人數 (每戶人數)
			住戶按下列結構組成百分率
22.1	24.9	17.0	無核心家庭
72.6	70.2	78.7	一個核心家庭
5.3	4.9	4.3	多個核心家庭
53.6	37.0	41.6	住戶居於自置居所百分率
13,173	9,257	9,202	住戶月入中位數(港元)

Hong Kong Island

Topics	Central and Western District 中西區	Wan Chai District 灣仔區	Eastern District 東區
DEMOGRAPHIC CHARACTERISTICS			
Number of residents	253 383	180 309	560 200
Number of enumerated residents	245 524	173 974	543 889
Percentage of persons			
Under age 5	5.4	4.9	5.8
Aged 5-14	12.2	10.8	13.0
Aged 60 and over	14.7	17.0	13.6
Percentage of persons aged 25-34 never married			
Male	51.2	55.8	49.8
Female	38.6	43.1	35.4
Percentage of population born in Hong Kong	53.5	50.8	58.4
EDUCATION			
Percentage of persons aged 6-18 attending school	93.4	93.6	92.2
Percentage of non-student population aged 20 and over having tertiary education	19.9	23.9	17.3
LABOUR FORCE CHARACTERISTICS			
Total labour force	136 196	97 710	292 324
Labour force participation rate (%)			
Male	80.0	79.9	79.9
Female	55.0	54.3	53.1
Both sexes	67.3	66.6	66.2
Percentage of working population who were managers, administrators, professionals and associate professionals	35.9	41.7	34.3
Percentage of working population in			
Secondary sector	18.4	17.1	28.2
Tertiary sector	80.7	81.8	71.1
Median monthly income (from main employment) of working population (HK\$)	6,230	6,625	6,222
HOUSEHOLD CHARACTERISTICS			
Number of domestic households	77 310	57 197	158 264
Average domestic household size (persons per household)	3.1	3.0	3.4
Percentage of households composed of			
No nuclear family	28.3	32.3	18.1
One nuclear family	67.7	63.3	75.9
Two or more nuclear families	4.0	4.4	6.0
Percentage of households occupying living quarters they owned	58.0	54.2	60.3
Median monthly household income (HK\$)	12,763	14,721	13,436

Southern District 南區	Total 總計	統計項目
		人口特徵
257 101	1 250 993	居民總數
250 866	1 214 253	實際點算居民人數
		人口按下列年齡組別分佈百分率
5.8	5.6	五歲以下
14.4	12.8	五歲至十四歲
12.4	14.1	六十歲及以上
		二十五歲至三十四歲人士 從未結婚的百分率
54.3	51.8	男性
38.2	37.7	女性
66.4	58.0	本港出生人口百分率
		教育
89.8	92.0	六歲至十八歲人士就學百分率
13.1	18.0	二十歲及以上非就學人士具 專上教育程度百分率
		勞動人口特徵
128 562	654 792	總勞動人口
		勞動人口參與率(%)
76.0	79.1	男性
52.4	53.5	女性
64.2	66.1	合計
24.8	33.9	工作人口的經理、行政級、 專業及輔助專業人員百分率
		工作人口按下列產業分佈百分率
23.7	23.6	第二產業
74.2	75.3	第三產業
5,195	6,098	工作人口每月主業收入中位數 (港元)
		住戶特徵
64 358	357 129	家庭住戶數目
3.8	3.3	家庭住戶平均人數 (每戶人數)
		住戶按下列結構組成百分率
15.4	22.1	無核心家庭
78.9	72.6	一個核心家庭
5.7	5.3	多個核心家庭
31.4	53.6	住戶居於自置居所百分率
12,224	13,173	住戶月入中位數(港元)

Kowloon and New Kowloon

Topics	Yau Tsim District 油尖區	Mong Kok District 旺角區	Sham Shui Po District 深水埗區	Kowloon City District 九龍城區
DEMOGRAPHIC CHARACTERISTICS				
Number of residents	111 692	170 368	380 615	402 934
Number of enumerated residents	108 051	165 430	369 951	389 839
Percentage of persons				
Under age 5	4.8	5.4	5.2	5.2
Aged 5-14	10.8	11.1	12.1	12.0
Aged 60 and over	16.9	15.9	17.3	14.7
Percentage of persons aged 25-34 never married				
Male	55.5	53.5	58.6	53.6
Female	39.4	33.7	39.4	40.4
Percentage of population born in Hong Kong	47.6	48.0	53.3	51.2
EDUCATION				
Percentage of persons aged 6-18 attending school	91.0	91.6	91.8	91.4
Percentage of non-student population aged 20 and over having tertiary education	13.0	9.0	8.9	14.9
LABOUR FORCE CHARACTERISTICS				
Total labour force	58 784	90 733	194 209	208 653
Labour force participation rate (%)				
Male	79.0	79.7	77.2	78.2
Female	48.3	49.1	48.2	51.6
Both sexes	64.4	65.6	63.5	64.7
Percentage of working population who were managers, administrators, professionals and associate professionals	30.1	21.4	21.7	29.4
Percentage of working population in				
Secondary sector	24.3	37.7	40.6	34.4
Tertiary sector	75.0	61.7	58.9	65.1
Median monthly income (from main employment) of working population (HK\$)	5,509	5,087	5,066	5,507
HOUSEHOLD CHARACTERISTICS				
Number of domestic households	36 051	57 351	114 956	114 914
Average domestic household size (persons per household)	2.9	2.9	3.2	3.3
Percentage of households composed of				
No nuclear family	37.4	36.7	28.3	22.6
One nuclear family	58.6	59.1	66.9	72.0
Two or more nuclear families	4.0	4.2	4.8	5.4
Percentage of households occupying living quarters they owned	48.6	54.5	35.6	52.4
Median monthly household income (HK\$)	9,818	8,083	8,544	11,101

Wong Tai Sin District 黃大仙區	Kwun Tong District 觀塘區	Total 總計	統計項目
			人口特徵
386 572	578 502	2 030 683	居民總數
377 736	564 258	1 975 265	實際點算居民人數
			人口按下列年齡組別分佈百分率
5.0	5.1	5.1	五歲以下
11.7	13.6	12.3	五歲至十四歲
17.5	14.3	15.8	六十歲及以上
			二十五歲至三十四歲人士 從未結婚的百分率
65.0	59.6	58.9	男性
47.8	40.3	41.1	女性
61.4	59.5	55.4	本港出生人口百分率
			教育
89.6	89.1	90.4	六歲至十八歲人士就學百分率
5.7	7.2	9.3	二十歲及以上非就學人士具 專上教育程度百分率
			勞動人口特徵
192 743	289 670	1 034 792	總勞動人口
			勞動人口參與率 (%)
75.2	77.1	77.3	男性
46.5	48.3	48.7	女性
61.3	63.1	63.4	合計
15.8	17.1	21.3	工作人口的經理、行政級、 專業及輔助專業人員百分率
			工作人口按下列產業分佈百分率
40.2	42.8	38.7	第二產業
59.3	56.8	60.8	第三產業
5,021	5,007	5,078	工作人口每月主業收入中位數 (港元)
			住戶特徵
103 196	160 791	587 259	家庭住戶數目
3.6	3.5	3.3	家庭住戶平均人數 (每戶人數)
			住戶按下列結構組成百分率
19.0	20.9	24.9	無核心家庭
75.2	74.7	70.2	一個核心家庭
5.8	4.4	4.9	多個核心家庭
23.8	26.7	37.0	住戶居於自置居所百分率
9,142	9,056	9,257	住戶月入中位數 (港元)

The New Territories

Topics	Kwai Tsing District 葵青區	Tsuen Wan District 荃灣區	Tuen Mun District 屯門區	Yuen Long District 元朗區	North District 北區
DEMOGRAPHIC CHARACTERISTICS					
Number of residents	440 807	271 576	380 683	229 724	165 666
Number of enumerated residents	430 852	264 448	373 366	225 278	162 067
Percentage of persons					
Under age 5	5.8	6.1	8.0	8.3	9.2
Aged 5-14	14.7	13.0	22.8	17.3	20.1
Aged 60 and over	11.2	10.2	6.9	12.7	11.5
Percentage of persons aged 25-34 never married					
Male	51.8	44.8	28.4	38.5	33.8
Female	30.6	28.8	14.2	22.4	17.1
Percentage of population born in Hong Kong	60.5	58.0	69.6	62.3	65.0
EDUCATION					
Percentage of persons aged 6-18 attending school	88.7	89.7	92.5	89.7	92.2
Percentage of non-student population aged 20 and over having tertiary education	6.2	10.8	5.5	6.5	4.4
LABOUR FORCE CHARACTERISTICS					
Total labour force	222 270	144 079	166 183	104 924	69 894
Labour force participation rate (%)					
Male	78.8	80.2	82.9	78.8	80.0
Female	50.0	53.9	45.4	45.1	40.9
Both sexes	64.9	67.3	64.3	62.6	61.0
Percentage of working population who were managers, administrators, professionals and associate professionals	14.0	23.5	15.5	15.9	12.9
Percentage of working population in					
Secondary sector	47.1	44.8	44.7	36.4	36.7
Tertiary sector	52.4	54.5	54.1	56.2	57.7
Median monthly income (from main employment) of working population (HK\$)	4,746	5,174	5,196	5,013	5,045
HOUSEHOLD CHARACTERISTICS					
Number of domestic households	116 233	76 000	100 046	63 821	44 215
Average domestic household size (persons per household)	3.7	3.5	3.7	3.5	3.6
Percentage of households composed of					
No nuclear family	17.3	18.2	12.1	23.9	18.8
One nuclear family	78.5	76.9	84.9	71.6	76.5
Two or more nuclear families	4.2	4.9	3.0	4.5	4.7
Percentage of households occupying living quarters they owned	22.8	53.2	41.6	53.0	34.0
Median monthly household income (HK\$)	9,102	11,122	8,468	7,765	7,418

Tai Po District 大埔區	Sha Tin District 沙田區	Sai Kung District 西貢區	Islands District 離島區	Total 總計	統計項目
					人口特徵
202 117	506 368	130 418	47 459	2 374 818	居民總數
197 721	494 270	127 027	46 632	2 321 661	實際點算居民人數
					人口按下列年齡組別分佈百分率
8.3	6.7	9.1	6.3	7.3	五歲以下
20.2	18.2	17.3	13.8	17.8	五歲至十四歲
9.4	9.6	9.1	15.2	10.0	六十歲及以上
					二十五歲至三十四歲人士 從未結婚的百分率
32.1	42.6	35.3	50.7	40.2	男性
17.7	27.6	19.9	30.8	23.4	女性
67.6	66.2	63.2	67.1	64.3	本港出生人口百分率
					教育
92.7	92.6	91.7	84.1	91.2	六歲至十八歲人士就學百分率
8.1	10.5	8.1	14.0	7.9	二十歲及以上非就學人士具 專上教育程度百分率
					勞動人口特徵
89 203	237 529	59 825	20 538	1 114 445	總勞動人口
					勞動人口參與率(%)
80.4	80.3	80.4	60.5	79.8	男性
45.7	48.3	47.5	48.8	47.8	女性
63.1	64.0	64.0	55.2	64.0	合計
20.2	23.3	19.0	28.9	18.6	工作人口的經理、行政級、 專業及輔助專業人員百分率
					工作人口按下列產業分佈百分率
39.5	35.2	40.2	21.0	40.8	第二產業
58.5	64.3	58.1	72.9	57.3	第三產業
5,507	5,578	5,165	5,155	5,142	工作人口每月主業收入中位數 (港元)
					住戶特徵
53 238	134 972	33 746	13 413	635 684	家庭住戶數目
3.7	3.6	3.7	3.1	3.6	家庭住戶平均人數 (每戶人數)
					住戶按下列結構組成百分率
14.4	15.9	13.3	33.9	17.0	無核心家庭
80.8	79.8	80.8	61.5	78.7	一個核心家庭
4.8	4.3	5.9	4.6	4.3	多個核心家庭
47.3	41.8	50.0	61.9	41.6	住戶居於自置居所百分率
9,240	10,351	9,299	9,186	9,202	住戶月入中位數(港元)

BASIC TABLES

基本統計表

THE WHOLE TERRITORY

<<< STATISTICS BASED ON COMPLETE ENUMERATION >>>

OCCUPIED LIVING QUARTERS TOTAL: 1 510 176

TYPE OF LIVING QUARTERS

Permanent housing

Housing Authority rental blocks

Group A 450 226
Group B 96 219

Housing Society rental blocks 28 446

Housing Authority home ownership estates 115 718

Private housing blocks

Self-contained 627 552
Non self-contained 678

Villas / Bungalows / Modern village houses 49 969

Simple stone structures 31 106

Institutions 13 307

Other permanent housing 30 915

Temporary housing

Roof-top structures 3 086

Other temporary housing 60 775

Marine

Vessels 2 179

DOMESTIC HOUSEHOLDS TOTAL: 1 582 215

HOUSEHOLD SIZE

One 225 930
Two 290 585
Three 307 558
Four 359 904
Five 225 933
Six and over 172 305

ENUMERATED RESIDENTS TOTAL: 5 522 281

AGE	Male	Female
0 - 4	176 448	162 063
5 - 9	209 256	193 931
10 - 14	213 340	196 878
15 - 19	213 439	196 203
20 - 24	216 280	213 919
25 - 29	283 377	294 190
30 - 34	303 200	297 521
35 - 39	251 372	239 958
40 - 44	210 858	188 844
45 - 49	131 057	107 983
50 - 54	135 447	113 171
55 - 59	135 776	120 869
60 - 64	120 266	114 595
65 - 69	89 550	95 547
70 - 74	61 908	73 018
75 and over	60 417	101 600
Total	2 811 991	2 710 290

<<< ESTIMATES BASED ON SAMPLE ENQUIRY >>>

DOMESTIC HOUSEHOLDS

ESTIMATED TOTAL: 1 582 215

HOUSEHOLD COMPOSITION

One person 233 923
One unextended nuclear family 975 498
One vertically extended nuclear family 169 543
One horizontally extended nuclear family 28 813
Two or more nuclear families 75 185
Related persons forming no nuclear family 67 750
Unrelated persons 31 503

TENURE OF ACCOMMODATION

Owner-occupier 673 067
Sole tenant 719 954
Co-tenant 63 683
Main tenant 12 209
Sub-tenant 41 505
Rent free 16 969
Provided by employer 52 685
N.A.(Marine households) 2 143

MONTHLY HOUSEHOLD INCOME (HK\$)

Under 2,000 75 552
2,000 - 3,999 115 236
4,000 - 5,999 202 511
6,000 - 7,999 218 388
8,000 - 9,999 181 846
10,000 - 14,999 314 379
15,000 - 19,999 176 406
20,000 - 29,999 156 500
30,000 - 39,999 60 169
40,000 - 49,999 28 374
50,000 and over 52 854

MONTHLY HOUSEHOLD RENT (HK\$)

Zero rent 717 643
Under 200 42 492
200 - 399 112 681
400 - 599 162 525
600 - 799 199 746
800 - 999 136 208
1,000 - 1,999 104 343
2,000 - 2,999 33 014
3,000 - 4,999 34 835
5,000 - 9,999 21 485
10,000 and over 15 100
N.A.(Marine households) 2 143

<<<

ESTIMATES BASED ON SAMPLE ENQUIRY

>>>

ENUMERATED RESIDENTS

ESTIMATED TOTAL: 5 522 281

USUAL LANGUAGE / DIALECT

Cantonese	4 583 322
English	114 084
Putonghua	57 577
Chiu Chau	72 812
Hakka	84 134
Fukien (including Taiwanese)	99 045
Sze Yap	22 415
Shanghainese	34 078
Other Chinese dialects	52 210
Filipino	5 939
Japanese	8 895
Other languages	34 398
N.A. (Persons under age 5 or dumb)	353 372

OCCUPATION

Managers and administrators	249 247
Professionals and associate professionals	379 240
Clerks	431 651
Service workers and shop sales workers	359 319
Skilled agricultural and fishery workers	20 455
Craft and related workers	397 992
Plant and machine operators and assemblers	365 826
Elementary occupations	503 832
Armed forces and occupations not classifiable	7 541
N.A. (Persons unemployed or economically inactive)	2 807 178

MARITAL STATUS

	Male	Female
Never married	807 443	626 554
Married	1 333 049	1 290 860
Widowed	48 584	210 390
Divorced / Separated	23 871	29 614
N.A. (Persons under age 15)	599 044	552 872
Total	2 811 991	2 710 290

INDUSTRY

Manufacturing	768 121
Construction	187 851
Wholesale, retail and import / export trades, restaurants and hotels	611 386
Transport, storage and communication	265 686
Financing, insurance, real estate and business services	287 168
Community, social and personal services	539 123
Other industries	55 768
N.A. (Persons unemployed or economically inactive)	2 807 178

EDUCATIONAL ATTAINMENT

	Under age 15	Age 15 and over
No schooling / Kindergarten	428 285	557 297
Primary	522 447	1 100 599
Lower secondary	199 726	837 730
Upper secondary	1 458	1 169 271
Matriculation	—	214 577
Tertiary		
Non-degree courses	—	234 912
Degree courses	—	255 979
Total	1 151 916	4 370 365

ACTIVITY STATUS

Economically active	
Self-employed	145 481
Employers	152 943
Employees	2 383 159
Unpaid family workers	33 520
Unemployed persons	95 899
Economically inactive	
Home-makers	631 760
Students	1 278 015
Of independent means	9 702
Retired persons	473 112
Other economically inactive	318 690

MONTHLY INCOME FROM MAIN EMPLOYMENT (HK\$)

Under 1,000	91 184
1,000 - 1,999	91 431
2,000 - 3,999	557 366
4,000 - 5,999	794 962
6,000 - 7,999	461 003
8,000 - 9,999	221 526
10,000 - 14,999	242 996
15,000 - 19,999	84 154
20,000 - 29,999	67 217
30,000 and over	69 744
Unpaid family workers	33 520
N.A. (Persons unemployed or economically inactive)	2 807 178

MARINE

<<< STATISTICS BASED ON COMPLETE ENUMERATION >>>

OCCUPIED LIVING QUARTERS		TOTAL :	DOMESTIC HOUSEHOLDS		TOTAL :		
		2 179			2 143		
TYPE OF LIVING QUARTERS			HOUSEHOLD SIZE				
Permanent housing			One			191	
Housing Authority rental blocks			Two			277	
Group A			Three			252	
Group B			Four			295	
Housing Society rental blocks			Five			281	
Housing Authority home ownership estates			Six and over			847	
Private housing blocks			<hr/>				
Self-contained			ENUMERATED RESIDENTS		TOTAL :	11 102	
Non self-contained			<hr/>				
Villas / Bungalows / Modern village houses			AGE		Male	Female	
Simple stone structures			0 - 4			509	
Institutions			5 - 9			556	
Other permanent housing			10 - 14			605	
Temporary housing			15 - 19			662	
Roof-top structures			20 - 24			696	
Other temporary housing			25 - 29			705	
Marine			30 - 34			582	
Vessels			35 - 39			539	
			40 - 44			455	
			45 - 49			317	
			50 - 54			257	
			55 - 59			256	
			60 - 64			193	
			65 - 69			108	
			70 - 74			67	
			75 and over			42	
			Total			6 549	
						4 553	

<<< ESTIMATES BASED ON SAMPLE ENQUIRY >>>

DOMESTIC HOUSEHOLDS		ESTIMATED TOTAL :	
		2 143	
HOUSEHOLD COMPOSITION		TENURE OF ACCOMMODATION	
One person	191	Owner-occupier	..
One unextended nuclear family	1 141	Sole tenant	..
One vertically extended nuclear family	185	Co-tenant	..
One horizontally extended nuclear family	106	Main tenant	..
Two or more nuclear families	384	Sub-tenant	..
Related persons forming no nuclear family	69	Rent free	..
Unrelated persons	67	Provided by employer	..
		N.A.(Marine households)	2 143
MONTHLY HOUSEHOLD INCOME (HK\$)		MONTHLY HOUSEHOLD RENT (HK\$)	
Under 2,000	197	Zero rent	..
2,000 - 3,999	235	Under 200	..
4,000 - 5,999	348	200 - 399	..
6,000 - 7,999	262	400 - 599	..
8,000 - 9,999	187	600 - 799	..
10,000 - 14,999	370	800 - 999	..
15,000 - 19,999	162	1,000 - 1,999	..
20,000 - 29,999	186	2,000 - 2,999	..
30,000 - 39,999	118	3,000 - 4,999	..
40,000 - 49,999	42	5,000 - 9,999	..
50,000 and over	36	10,000 and over	..
		N.A.(Marine households)	2 143

<<< ESTIMATES BASED ON SAMPLE ENQUIRY >>>

ENUMERATED RESIDENTS ESTIMATED TOTAL : 11 102

USUAL LANGUAGE / DIALECT

Cantonese	8 922
English	—
Putonghua	145
Chiu Chau	330
Hakka	39
Fukien (including Taiwanese)	11
Sze Yap	49
Shanghainese	—
Other Chinese dialects	564
Filipino	—
Japanese	—
Other languages	1
N.A. (Persons under age 5 or dumb)	1 041

OCCUPATION

Managers and administrators	18
Professionals and associate professionals	9
Clerks	43
Service workers and shop sales workers	182
Skilled agricultural and fishery workers	4 723
Craft and related workers	133
Plant and machine operators and assemblers	307
Elementary occupations	1 463
Armed forces and occupations not classifiable	15
N.A. (Persons unemployed or economically inactive)	4 209

MARITAL STATUS

	<i>Male</i>	<i>Female</i>
Never married	1 828	728
Married	2 987	2 226
Widowed	55	81
Divorced / Separated	9	2
N.A. (Persons under age 15)	1 670	1 516
Total	6 549	4 553

INDUSTRY

Manufacturing	180
Construction	67
Wholesale, retail and import / export trades, restaurants and hotels	204
Transport, storage and communication	1 063
Financing, insurance, real estate and business services	13
Community, social and personal services	42
Other industries	5 324
N.A. (Persons unemployed or economically inactive)	4 209

EDUCATIONAL ATTAINMENT

	<i>Under age 15</i>	<i>Age 15 and over</i>
No schooling / Kindergarten	1 315	4 202
Primary	1 576	2 639
Lower secondary	294	805
Upper secondary	1	226
Matriculation	—	32
Tertiary		
Non-degree courses	—	11
Degree courses	—	1
Total	3 186	7 916

ACTIVITY STATUS

Economically active	
Self-employed	1 762
Employers	560
Employees	2 426
Unpaid family workers	2 145
Unemployed persons	80
Economically inactive	
Home-makers	452
Students	2 444
Of independent means	22
Retired persons	221
Other economically inactive	990

MONTHLY INCOME FROM MAIN EMPLOYMENT (HK\$)

Under 1,000	584
1,000 — 1,999	648
2,000 — 3,999	1 354
4,000 — 5,999	1 027
6,000 — 7,999	383
8,000 — 9,999	107
10,000 — 14,999	278
15,000 — 19,999	97
20,000 — 29,999	163
30,000 and over	107
Unpaid family workers	2 145
N.A. (Persons unemployed or economically inactive)	4 209

All Land Areas

<<< STATISTICS BASED ON COMPLETE ENUMERATION >>>

OCCUPIED LIVING QUARTERS		TOTAL :	DOMESTIC HOUSEHOLDS		TOTAL :
		1 507 997			1 580 072
TYPE OF LIVING QUARTERS		HOUSEHOLD SIZE			
Permanent housing			One		225 739
Housing Authority rental blocks			Two		290 308
Group A	450 226	Three		307 306	
Group B	96 219	Four		359 609	
Housing Society rental blocks			Five		225 652
			Six and over		171 458
Housing Authority home ownership estates		115 718	ENUMERATED RESIDENTS		
Private housing blocks					TOTAL : 5 511 179
Self-contained	627 552	AGE	<i>Male</i>	<i>Female</i>	
Non self-contained	678	0 - 4	175 939	161 568	
Villas / Bungalows / Modern village houses	49 969	5 - 9	208 700	193 406	
Simple stone structures	31 106	10 - 14	212 735	196 382	
Institutions	13 307	15 - 19	212 777	195 823	
Other permanent housing	30 915	20 - 24	215 584	213 526	
Temporary housing		25 - 29	282 672	293 730	
Roof-top structures	3 086	30 - 34	302 618	297 135	
Other temporary housing	60 775	35 - 39	250 833	239 629	
		40 - 44	210 403	188 550	
		45 - 49	130 740	107 797	
		50 - 54	135 190	113 004	
		55 - 59	135 520	120 709	
		60 - 64	120 073	114 479	
		65 - 69	89 442	95 482	
		70 - 74	61 841	72 973	
		75 and over	60 375	101 544	
		Total	2 805 442	2 705 737	

<<< ESTIMATES BASED ON SAMPLE ENQUIRY >>>

DOMESTIC HOUSEHOLDS		ESTIMATED TOTAL :	
		1 580 072	
HOUSEHOLD COMPOSITION		TENURE OF ACCOMMODATION	
One person	233 732	Owner-occupier	673 067
One unextended nuclear family	974 357	Sole tenant	719 954
One vertically extended nuclear family	169 358	Co-tenant	63 683
One horizontally extended nuclear family	28 707	Main tenant	12 209
Two or more nuclear families	74 801	Sub-tenant	41 505
Related persons forming no nuclear family	67 681	Rent free	16 969
Unrelated persons	31 436	Provided by employer	52 685
MONTHLY HOUSEHOLD INCOME (HK\$)		MONTHLY HOUSEHOLD RENT (HK\$)	
Under 2,000	75 355	Zero rent	717 643
2,000 - 3,999	115 001	Under 200	42 492
4,000 - 5,999	202 163	200 - 399	112 681
6,000 - 7,999	218 126	400 - 599	162 525
8,000 - 9,999	181 659	600 - 799	199 746
10,000 - 14,999	314 009	800 - 999	136 208
15,000 - 19,999	176 244	1,000 - 1,999	104 343
20,000 - 29,999	156 314	2,000 - 2,999	33 014
30,000 - 39,999	60 051	3,000 - 4,999	34 835
40,000 - 49,999	28 332	5,000 - 9,999	21 485
50,000 and over	52 818	10,000 and over	15 100

<<< ESTIMATES BASED ON SAMPLE ENQUIRY >>>

ENUMERATED RESIDENTS

ESTIMATED TOTAL: 5 511 179

USUAL LANGUAGE / DIALECT

Cantonese	4 574 400
English	114 084
Putonghua	57 432
Chiu Chau	72 482
Hakka	84 095
Fukien (including Taiwanese)	99 034
Sze Yap	22 366
Shanghainese	34 078
Other Chinese dialects	51 646
Filipino	5 939
Japanese	8 895
Other languages	34 397
N.A. (Persons under age 5 or dumb)	352 331

OCCUPATION

Managers and administrators	249 229
Professionals and associate professionals	379 231
Clerks	431 608
Service workers and shop sales workers	359 137
Skilled agricultural and fishery workers	15 732
Craft and related workers	397 859
Plant and machine operators and assemblers	365 519
Elementary occupations	502 369
Armed forces and occupations not classifiable	7 526
N.A. (Persons unemployed or economically inactive)	2 802 969

MARITAL STATUS

	<i>Male</i>	<i>Female</i>
Never married	805 615	625 826
Married	1 330 062	1 288 634
Widowed	48 529	210 309
Divorced / Separated	23 862	29 612
N.A. (Persons under age 15)	597 374	551 356
Total	2 805 442	2 705 737

EDUCATIONAL ATTAINMENT

	<i>Under age 15</i>	<i>Age 15 and over</i>
No schooling / Kindergarten	426 970	553 095
Primary	520 871	1 097 960
Lower secondary	199 432	836 925
Upper secondary	1 457	1 169 045
Matriculation	-	214 545
Tertiary		
Non-degree courses	-	234 901
Degree courses	-	255 978
Total	1 148 730	4 362 449

ACTIVITY STATUS

Economically active	
Self-employed	143 719
Employers	152 383
Employees	2 380 733
Unpaid family workers	31 375
Unemployed persons	95 819
Economically inactive	
Home-makers	631 308
Students	1 275 571
Of independent means	9 680
Retired persons	472 891
Other economically inactive	317 700

INDUSTRY

Manufacturing	767 941
Construction	187 784
Wholesale, retail and import / export trades, restaurants and hotels	611 182
Transport, storage and communication	264 623
Financing, insurance, real estate and business services	287 155
Community, social and personal services	539 081
Other industries	50 444
N.A. (Persons unemployed or economically inactive)	2 802 969

**MONTHLY INCOME FROM MAIN
EMPLOYMENT (HK\$)**

Under 1,000	90 600
1,000 - 1,999	90 783
2,000 - 3,999	556 012
4,000 - 5,999	793 935
6,000 - 7,999	460 620
8,000 - 9,999	221 419
10,000 - 14,999	242 718
15,000 - 19,999	84 057
20,000 - 29,999	67 054
30,000 and over	69 637
Unpaid family workers	31 375
N.A. (Persons unemployed or economically inactive)	2 802 969

Hong Kong Island

<<< STATISTICS BASED ON COMPLETE ENUMERATION >>>

OCCUPIED LIVING QUARTERS		TOTAL :	DOMESTIC HOUSEHOLDS		TOTAL :
		341 310			357 129
TYPE OF LIVING QUARTERS			HOUSEHOLD SIZE		
Permanent housing			One	54 228	
Housing Authority rental blocks			Two	71 750	
Group A			Three	71 136	
Group B			Four	76 603	
			Five	47 768	
Housing Society rental blocks			Six and over	35 644	
			<hr/>		
Housing Authority home ownership estates			ENUMERATED RESIDENTS		TOTAL :
					1 214 253
Private housing blocks			AGE	<i>Male</i>	<i>Female</i>
Self-contained			0 - 4	35 127	32 553
Non self-contained			5 - 9	39 009	36 516
			10 - 14	41 792	38 445
Villas / Bungalows / Modern village houses			15 - 19	42 096	39 030
			20 - 24	42 986	44 521
Simple stone structures			25 - 29	57 936	66 240
			30 - 34	63 822	69 339
Institutions			35 - 39	56 788	59 709
			40 - 44	52 365	50 561
Other permanent housing			45 - 49	29 421	26 909
			50 - 54	31 230	27 496
Temporary housing			55 - 59	31 438	28 011
Roof-top structures			60 - 64	27 168	27 961
			65 - 69	20 668	23 626
Other temporary housing			70 - 74	14 934	18 439
			75 and over	14 841	23 276
			Total	601 621	612 632

<<< ESTIMATES BASED ON SAMPLE ENQUIRY >>>

DOMESTIC HOUSEHOLDS		ESTIMATED TOTAL :	
		357 129	
HOUSEHOLD COMPOSITION		TENURE OF ACCOMMODATION	
One person	54 495	Owner-occupier	191 398
One unextended nuclear family	214 617	Sole tenant	110 683
One vertically extended nuclear family	37 908	Co-tenant	12 235
One horizontally extended nuclear family	6 959	Main tenant	4 407
Two or more nuclear families	18 810	Sub-tenant	11 638
Related persons forming no nuclear family	13 618	Rent free	4 223
Unrelated persons	10 722	Provided by employer	22 545
MONTHLY HOUSEHOLD INCOME (HK\$)		MONTHLY HOUSEHOLD RENT (HK\$)	
Under 2,000	13 248	Zero rent	208 666
2,000 - 3,999	19 970	Under 200	4 171
4,000 - 5,999	32 320	200 - 399	14 336
6,000 - 7,999	34 338	400 - 599	16 776
8,000 - 9,999	32 130	600 - 799	27 775
10,000 - 14,999	65 235	800 - 999	14 774
15,000 - 19,999	44 897	1,000 - 1,999	24 359
20,000 - 29,999	47 492	2,000 - 2,999	11 880
30,000 - 39,999	24 141	3,000 - 4,999	13 740
40,000 - 49,999	13 323	5,000 - 9,999	10 260
50,000 and over	30 035	10,000 and over	10 392

<<<

ESTIMATES BASED ON SAMPLE ENQUIRY

>>>

ENUMERATED RESIDENTS

ESTIMATED TOTAL: 1 214 253

USUAL LANGUAGE / DIALECT

Cantonese	956 541
English	64 144
Putonghua	17 761
Chiu Chau	13 917
Hakka	3 816
Fukien (including Taiwanese)	43 545
Sze Yap	3 779
Shanghainese	10 118
Other Chinese dialects	8 985
Filipino	2 891
Japanese	6 459
Other languages	11 509
N.A. (Persons under age 5 or dumb)	70 788

OCCUPATION

Managers and administrators	92 866
Professionals and associate professionals	123 175
Clerks	112 129
Service workers and shop sales workers	76 879
Skilled agricultural and fishery workers	2 101
Craft and related workers	59 603
Plant and machine operators and assemblers	49 886
Elementary occupations	119 442
Armed forces and occupations not classifiable	1 521
N.A. (Persons unemployed or economically inactive)	576 651

MARITAL STATUS

	Male	Female
Never married	172 799	150 845
Married	296 468	297 013
Widowed	10 829	49 113
Divorced / Separated	5 597	8 147
N.A. (Persons under age 15)	115 928	107 514
Total	601 621	612 632

EDUCATIONAL ATTAINMENT

	Under age 15	Age 15 and over
No schooling / Kindergarten	84 694	113 452
Primary	98 857	191 997
Lower secondary	39 420	148 976
Upper secondary	471	287 399
Matriculation	-	70 115
Tertiary		
Non-degree courses	-	68 849
Degree courses	-	110 023
Total	223 442	990 811

ACTIVITY STATUS

Economically active	
Self-employed	34 082
Employers	46 436
Employees	550 728
Unpaid family workers	6 356
Unemployed persons	17 190
Economically inactive	
Home-makers	133 941
Students	253 417
Of independent means	3 079
Retired persons	104 244
Other economically inactive	64 780

INDUSTRY

Manufacturing	115 471
Construction	30 972
Wholesale, retail and import / export trades, restaurants and hotels	159 328
Transport, storage and communication	53 124
Financing, insurance, real estate and business services	109 592
Community, social and personal services	158 208
Other industries	10 907
N.A. (Persons unemployed or economically inactive)	576 651

MONTHLY INCOME FROM MAIN EMPLOYMENT (HK\$)

Under 1,000	17 188
1,000 - 1,999	15 073
2,000 - 3,999	119 145
4,000 - 5,999	157 848
6,000 - 7,999	97 809
8,000 - 9,999	53 519
10,000 - 14,999	70 962
15,000 - 19,999	30 061
20,000 - 29,999	29 353
30,000 and over	40 288
Unpaid family workers	6 356
N.A. (Persons unemployed or economically inactive)	576 651

Kowloon and New Kowloon

<<< STATISTICS BASED ON COMPLETE ENUMERATION >>>

OCCUPIED LIVING QUARTERS TOTAL : 537 078

TYPE OF LIVING QUARTERS

Permanent housing	
Housing Authority rental blocks	
Group A	157 916
Group B	64 553
Housing Society rental blocks	8 994
Housing Authority home ownership estates	30 161
Private housing blocks	
Self-contained	241 072
Non self-contained	360
Villas / Bungalows / Modern village houses	832
Simple stone structures	2 265
Institutions	3 443
Other permanent housing	9 798
Temporary housing	
Roof-top structures	2 058
Other temporary housing	15 626

DOMESTIC HOUSEHOLDS TOTAL : 587 259

HOUSEHOLD SIZE

One	101 562
Two	111 579
Three	112 482
Four	120 156
Five	78 252
Six and over	63 228

ENUMERATED RESIDENTS TOTAL : 1 975 265

AGE

	Male	Female
0 - 4	52 870	48 253
5 - 9	61 456	55 857
10 - 14	65 153	60 076
15 - 19	74 146	68 454
20 - 24	85 557	82 928
25 - 29	111 293	104 438
30 - 34	106 072	93 350
35 - 39	83 140	74 681
40 - 44	70 516	63 097
45 - 49	47 381	40 617
50 - 54	54 134	47 349
55 - 59	59 200	52 939
60 - 64	54 714	49 542
65 - 69	40 534	40 930
70 - 74	27 267	30 595
75 and over	25 615	43 111
Total	1 019 048	956 217

<<< ESTIMATES BASED ON SAMPLE ENQUIRY >>>

DOMESTIC HOUSEHOLDS

ESTIMATED TOTAL : 587 259

HOUSEHOLD COMPOSITION

One person	103 815
One unextended nuclear family	335 823
One vertically extended nuclear family	65 617
One horizontally extended nuclear family	11 006
Two or more nuclear families	28 578
Related persons forming no nuclear family	30 838
Unrelated persons	11 582

TENURE OF ACCOMMODATION

Owner-occupier	217 431
Sole tenant	277 702
Co-tenant	39 786
Main tenant	6 769
Sub-tenant	25 672
Rent free	5 846
Provided by employer	14 053

MONTHLY HOUSEHOLD INCOME (HK\$)

Under 2,000	32 956
2,000 - 3,999	53 321
4,000 - 5,999	82 069
6,000 - 7,999	80 115
8,000 - 9,999	65 919
10,000 - 14,999	115 513
15,000 - 19,999	63 235
20,000 - 29,999	55 177
30,000 - 39,999	18 535
40,000 - 49,999	7 956
50,000 and over	12 463

MONTHLY HOUSEHOLD RENT (HK\$)

Zero rent	230 325
Under 200	18 564
200 - 399	67 931
400 - 599	68 178
600 - 799	63 058
800 - 999	54 817
1,000 - 1,999	49 571
2,000 - 2,999	13 572
3,000 - 4,999	12 105
5,000 - 9,999	6 457
10,000 and over	2 681

<<<

ESTIMATES BASED ON SAMPLE ENQUIRY

>>>

ENUMERATED RESIDENTS

ESTIMATED TOTAL: 1 975 265

USUAL LANGUAGE / DIALECT

Cantonese	1 678 513
English	23 898
Putonghua	17 472
Chiu Chau	36 672
Hakka	20 394
Fukien (including Taiwanese)	29 076
Sze Yap	12 445
Shanghainese	15 432
Other Chinese dialects	21 475
Filipino	1 852
Japanese	1 985
Other languages	9 672
N.A. (Persons under age 5 or dumb)	106 379

OCCUPATION

Managers and administrators	82 364
Professionals and associate professionals	130 426
Clerks	158 607
Service workers and shop sales workers	142 307
Skilled agricultural and fishery workers	295
Craft and related workers	156 847
Plant and machine operators and assemblers	136 610
Elementary occupations	188 209
Armed forces and occupations not classifiable	1 295
N.A. (Persons unemployed or economically inactive)	978 305

MARITAL STATUS

	Male	Female
Never married	329 682	245 187
Married	479 242	447 535
Widowed	21 082	88 228
Divorced / Separated	9 563	11 081
N.A. (Persons under age 15)	179 479	164 186
Total	1 019 048	956 217

EDUCATIONAL ATTAINMENT

	Under age 15	Age 15 and over
No schooling / Kindergarten	127 370	225 034
Primary	154 285	436 423
Lower secondary	61 609	306 746
Upper secondary	401	425 071
Matriculation	-	74 990
Tertiary		
Non-degree courses	-	85 180
Degree courses	-	78 156
Total	343 665	1 631 600

ACTIVITY STATUS

Economically active	
Self-employed	52 751
Employers	56 145
Employees	876 898
Unpaid family workers	11 166
Unemployed persons	37 832
Economically inactive	
Home-makers	228 783
Students	402 443
Of independent means	3 383
Retired persons	200 402
Other economically inactive	105 462

INDUSTRY

Manufacturing	310 455
Construction	69 339
Wholesale, retail and import / export trades, restaurants and hotels	241 125
Transport, storage and communication	96 163
Financing, insurance, real estate and business services	92 566
Community, social and personal services	176 514
Other industries	10 798
N.A. (Persons unemployed or economically inactive)	978 305

MONTHLY INCOME FROM MAIN EMPLOYMENT (HK\$)

Under 1,000	37 295
1,000 - 1,999	35 682
2,000 - 3,999	217 984
4,000 - 5,999	310 368
6,000 - 7,999	167 784
8,000 - 9,999	76 064
10,000 - 14,999	80 669
15,000 - 19,999	26 066
20,000 - 29,999	18 700
30,000 and over	15 182
Unpaid family workers	11 166
N.A. (Persons unemployed or economically inactive)	978 305

The New Territories

<<< STATISTICS BASED ON COMPLETE ENUMERATION >>>

OCCUPIED LIVING QUARTERS		TOTAL :	DOMESTIC HOUSEHOLDS		TOTAL :
		629 609			635 684
TYPE OF LIVING QUARTERS			HOUSEHOLD SIZE		
Permanent housing			One	69 949	
Housing Authority rental blocks			Two	106 979	
Group A			Three	123 688	
Group B			Four	162 850	
Housing Society rental blocks			Five	99 632	
			Six and over	72 586	
Housing Authority home ownership estates					
Private housing blocks			ENUMERATED RESIDENTS		
Self-contained			TOTAL : 2 321 661		
Non self-contained			AGE		
Villas / Bungalows / Modern village houses				Male	Female
Simple stone structures			0 - 4	87 942	80 762
Institutions			5 - 9	108 235	101 033
Other permanent housing			10 - 14	105 790	97 861
Temporary housing			15 - 19	96 535	88 339
Roof-top structures			20 - 24	87 041	86 077
Other temporary housing			25 - 29	113 443	123 052
			30 - 34	132 724	134 446
			35 - 39	110 905	105 239
			40 - 44	87 522	74 892
			45 - 49	53 938	40 271
			50 - 54	49 826	38 159
			55 - 59	44 882	39 759
			60 - 64	38 191	36 976
			65 - 69	28 240	30 926
			70 - 74	19 640	23 939
			75 and over	19 919	35 157
			Total	1 184 773	1 136 888

<<< ESTIMATES BASED ON SAMPLE ENQUIRY >>>

DOMESTIC HOUSEHOLDS		ESTIMATED TOTAL :	
		635 684	
HOUSEHOLD COMPOSITION		TENURE OF ACCOMMODATION	
One person	75 422	Owner-occupier	264 238
One unextended nuclear family	423 917	Sole tenant	331 569
One vertically extended nuclear family	65 833	Co-tenant	11 662
One horizontally extended nuclear family	10 742	Main tenant	1 033
Two or more nuclear families	27 413	Sub-tenant	4 195
Related persons forming no nuclear family	23 225	Rent free	6 900
Unrelated persons	9 132	Provided by employer	16 087
MONTHLY HOUSEHOLD INCOME (HK\$)		MONTHLY HOUSEHOLD RENT (HK\$)	
Under 2,000	29 151	Zero rent	278 652
2,000 - 3,999	41 710	Under 200	19 757
4,000 - 5,999	87 774	200 - 399	30 414
6,000 - 7,999	103 673	400 - 599	77 571
8,000 - 9,999	83 610	600 - 799	108 913
10,000 - 14,999	133 261	800 - 999	66 617
15,000 - 19,999	68 112	1,000 - 1,999	30 413
20,000 - 29,999	53 645	2,000 - 2,999	7 562
30,000 - 39,999	17 375	3,000 - 4,999	8 990
40,000 - 49,999	7 053	5,000 - 9,999	4 768
50,000 and over	10 320	10,000 and over	2 027

<<<

ESTIMATES BASED ON SAMPLE ENQUIRY

>>>

ENUMERATED RESIDENTS

ESTIMATED TOTAL : 2 321 661

USUAL LANGUAGE / DIALECT

Cantonese	1 939 346
English	26 042
Putonghua	22 199
Chiu Chau	21 893
Hakka	59 885
Fukien (including Taiwanese)	26 413
Sze Yap	6 142
Shanghainese	8 528
Other Chinese dialects	21 186
Filipino	1 196
Japanese	451
Other languages	13 216
N.A. (Persons under age 5 or dumb)	175 164

OCCUPATION

Managers and administrators	73 999
Professionals and associate professionals	125 630
Clerks	160 872
Service workers and shop sales workers	139 951
Skilled agricultural and fishery workers	13 336
Craft and related workers	181 409
Plant and machine operators and assemblers	179 023
Elementary occupations	194 718
Armed forces and occupations not classifiable	4 710
N.A. (Persons unemployed or economically inactive)	1 248 013

MARITAL STATUS

	Male	Female
Never married	303 134	229 794
Married	554 352	544 086
Widowed	16 618	72 968
Divorced / Separated	8 702	10 384
N.A. (Persons under age 15)	301 967	279 656
Total	1 184 773	1 136 888

EDUCATIONAL ATTAINMENT

	Under age 15	Age 15 and over
No schooling / Kindergarten	214 906	214 609
Primary	267 729	469 540
Lower secondary	98 403	381 203
Upper secondary	585	456 575
Matriculation	—	69 440
Tertiary		
Non-degree courses	—	80 872
Degree courses	—	67 799
Total	581 623	1 740 038

ACTIVITY STATUS

Economically active	
Self-employed	56 886
Employers	49 802
Employees	953 107
Unpaid family workers	13 853
Unemployed persons	40 797
Economically inactive	
Home-makers	268 584
Students	619 711
Of independent means	3 218
Retired persons	168 245
Other economically inactive	147 458

INDUSTRY

Manufacturing	342 015
Construction	87 473
Wholesale, retail and import / export trades, restaurants and hotels	210 729
Transport, storage and communication	115 336
Financing, insurance, real estate and business services	84 997
Community, social and personal services	204 359
Other industries	28 739
N.A. (Persons unemployed or economically inactive)	1 248 013

MONTHLY INCOME FROM MAIN EMPLOYMENT (HK\$)

Under 1,000	36 117
1,000 - 1,999	40 028
2,000 - 3,999	218 883
4,000 - 5,999	325 719
6,000 - 7,999	195 027
8,000 - 9,999	91 836
10,000 - 14,999	91 087
15,000 - 19,999	27 930
20,000 - 29,999	19 001
30,000 and over	14 167
Unpaid family workers	13 853
N.A. (Persons unemployed or economically inactive)	1 248 013

Central and Western District

<<< STATISTICS BASED ON COMPLETE ENUMERATION >>>

OCCUPIED LIVING QUARTERS		TOTAL :	DOMESTIC HOUSEHOLDS		TOTAL :
		73 074			77 310
TYPE OF LIVING QUARTERS			HOUSEHOLD SIZE		
Permanent housing			One	14 769	
Housing Authority rental blocks			Two	17 206	
Group A	609		Three	15 102	
Group B	-		Four	14 918	
Housing Society rental blocks			Five	8 870	
			Six and over	6 445	
Housing Authority home ownership estates			-		
Private housing blocks			ENUMERATED RESIDENTS		
Self-contained	63 687		TOTAL :		245 524
Non self-contained	178		AGE		
Villas / Bungalows / Modern village houses	353			Male	Female
Simple stone structures	40		0 - 4	6 985	6 286
Institutions	834		5 - 9	7 534	7 200
Other permanent housing	4 657		10 - 14	8 012	7 213
Temporary housing			15 - 19	7 708	7 072
Roof-top structures	125		20 - 24	8 746	8 835
Other temporary housing	524		25 - 29	11 583	13 684
			30 - 34	13 200	14 431
			35 - 39	11 651	12 485
			40 - 44	10 818	10 409
			45 - 49	5 976	5 462
			50 - 54	6 410	5 485
			55 - 59	6 633	5 522
			60 - 64	5 997	5 787
			65 - 69	4 539	4 832
			70 - 74	3 210	3 817
			75 and over	3 280	4 722
			Total	122 282	123 242

<<< ESTIMATES BASED ON SAMPLE ENQUIRY >>>

DOMESTIC HOUSEHOLDS		ESTIMATED TOTAL :	
		77 310	
HOUSEHOLD COMPOSITION		TENURE OF ACCOMMODATION	
One person	15 485	Owner-occupier	44 825
One unextended nuclear family	44 320	Sole tenant	16 170
One vertically extended nuclear family	6 590	Co-tenant	3 805
One horizontally extended nuclear family	1 422	Main tenant	1 226
Two or more nuclear families	3 120	Sub-tenant	3 150
Related persons forming no nuclear family	2 797	Rent free	1 240
Unrelated persons	3 576	Provided by employer	6 894
MONTHLY HOUSEHOLD INCOME (HK\$)		MONTHLY HOUSEHOLD RENT (HK\$)	
Under 2,000	3 450	Zero rent	49 918
2,000 - 3,999	5 205	Under 200	530
4,000 - 5,999	7 288	200 - 399	2 150
6,000 - 7,999	7 438	400 - 599	2 546
8,000 - 9,999	6 940	600 - 799	2 947
10,000 - 14,999	13 307	800 - 999	1 422
15,000 - 19,999	9 383	1,000 - 1,999	4 891
20,000 - 29,999	8 971	2,000 - 2,999	3 378
30,000 - 39,999	4 823	3,000 - 4,999	4 342
40,000 - 49,999	2 620	5,000 - 9,999	2 069
50,000 and over	7 885	10,000 and over	3 117

<<<

ESTIMATES BASED ON SAMPLE ENQUIRY

>>>

ENUMERATED RESIDENTS

ESTIMATED TOTAL: 245 524

USUAL LANGUAGE / DIALECT

Cantonese	187 680
English	18 657
Putonghua	3 466
Chiu Chau	6 483
Hakka	294
Fukien (including Taiwanese)	6 857
Sze Yap	813
Shanghainese	1 109
Other Chinese dialects	2 161
Filipino	791
Japanese	429
Other languages	2 993
N.A. (Persons under age 5 or dumb)	13 791

OCCUPATION

Managers and administrators	21 776
Professionals and associate professionals	26 002
Clerks	24 154
Service workers and shop sales workers	17 182
Skilled agricultural and fishery workers	43
Craft and related workers	10 314
Plant and machine operators and assemblers	7 078
Elementary occupations	26 069
Armed forces and occupations not classifiable	417
N.A. (Persons unemployed or economically inactive)	112 489

MARITAL STATUS

	<i>Male</i>	<i>Female</i>
Never married	34 715	31 008
Married	61 860	60 983
Widowed	2 084	8 978
Divorced / Separated	1 092	1 574
N.A. (Persons under age 15)	22 531	20 699
Total	122 282	123 242

EDUCATIONAL ATTAINMENT

	<i>Under age 15</i>	<i>Age 15 and over</i>
No schooling / Kindergarten	16 571	20 244
Primary	19 315	37 668
Lower secondary	7 220	28 035
Upper secondary	124	59 078
Matriculation	-	15 872
Tertiary		
Non-degree courses	-	12 920
Degree courses	-	28 477
Total	43 230	202 294

ACTIVITY STATUS

Economically active	
Self-employed	9 726
Employers	10 761
Employees	110 787
Unpaid family workers	1 761
Unemployed persons	3 161
Economically inactive	
Home-makers	26 427
Students	49 991
Of independent means	438
Retired persons	20 648
Other economically inactive	11 824

INDUSTRY

Manufacturing	19 231
Construction	4 710
Wholesale, retail and import / export trades, restaurants and hotels	38 216
Transport, storage and communication	9 882
Financing, insurance, real estate and business services	24 174
Community, social and personal services	35 051
Other industries	1 771
N.A. (Persons unemployed or economically inactive)	112 489

MONTHLY INCOME FROM MAIN
EMPLOYMENT (HK\$)

Under 1,000	3 350
1,000 - 1,999	3 557
2,000 - 3,999	25 100
4,000 - 5,999	30 371
6,000 - 7,999	19 798
8,000 - 9,999	11 577
10,000 - 14,999	15 372
15,000 - 19,999	6 386
20,000 - 29,999	5 701
30,000 and over	10 062
Unpaid family workers	1 761
N.A. (Persons unemployed or economically inactive)	112 489

Wan Chai District

<<< STATISTICS BASED ON COMPLETE ENUMERATION >>>

OCCUPIED LIVING QUARTERS		TOTAL :	DOMESTIC HOUSEHOLDS		TOTAL :
		51 745			57 197
TYPE OF LIVING QUARTERS			HOUSEHOLD SIZE		
Permanent housing			One	13 459	
Housing Authority rental blocks			Two	12 996	
Group A			Three	10 549	
Group B			Four	9 797	
Housing Society rental blocks			Five	5 844	
			Six and over	4 552	
Housing Authority home ownership estates					
Private housing blocks			ENUMERATED RESIDENTS		
			TOTAL :		
			173 974		
			AGE		
					Male
					Female
Self-contained			0 - 4	4 433	4 071
Non self-contained			5 - 9	4 770	4 508
Villas / Bungalows / Modern village houses			10 - 14	4 960	4 586
			15 - 19	4 583	4 370
			20 - 24	4 727	5 681
			25 - 29	7 475	9 371
			30 - 34	8 466	10 098
			35 - 39	7 983	9 208
			40 - 44	8 052	7 882
			45 - 49	4 855	4 380
			50 - 54	5 305	4 528
			55 - 59	5 639	4 430
			60 - 64	4 769	4 388
			65 - 69	3 582	3 977
			70 - 74	2 498	3 191
			75 and over	2 784	4 424
			Total	84 881	89 093

<<< ESTIMATES BASED ON SAMPLE ENQUIRY >>>

DOMESTIC HOUSEHOLDS		ESTIMATED TOTAL :	
		57 197	
HOUSEHOLD COMPOSITION		TENURE OF ACCOMMODATION	
One person	13 237	Owner-occupier	30 990
One unextended nuclear family	30 168	Sole tenant	11 335
One vertically extended nuclear family	4 962	Co-tenant	3 373
One horizontally extended nuclear family	1 083	Main tenant	1 498
Two or more nuclear families	2 509	Sub-tenant	3 619
Related persons forming no nuclear family	2 277	Rent free	897
Unrelated persons	2 961	Provided by employer	5 485
MONTHLY HOUSEHOLD INCOME (HK\$)		MONTHLY HOUSEHOLD RENT (HK\$)	
Under 2,000	2 342	Zero rent	35 631
2,000 - 3,999	3 788	Under 200	425
4,000 - 5,999	4 934	200 - 399	828
6,000 - 7,999	4 832	400 - 599	864
8,000 - 9,999	4 142	600 - 799	967
10,000 - 14,999	8 782	800 - 999	928
15,000 - 19,999	6 219	1,000 - 1,999	4 172
20,000 - 29,999	7 777	2,000 - 2,999	3 694
30,000 - 39,999	4 578	3,000 - 4,999	4 135
40,000 - 49,999	2 710	5,000 - 9,999	3 097
50,000 and over	7 093	10,000 and over	2 456

<<<

ESTIMATES BASED ON SAMPLE ENQUIRY

>>>

ENUMERATED RESIDENTS

ESTIMATED TOTAL: 173 974

USUAL LANGUAGE / DIALECT

Cantonese	132 557
English	15 046
Putonghua	3 397
Chiu Chau	1 067
Hakka	404
Fukien (including Taiwanese)	1 625
Sze Yap	750
Shanghainese	2 245
Other Chinese dialects	857
Filipino	830
Japanese	2 774
Other languages	3 345
N.A. (Persons under age 5 or dumb)	9 077

OCCUPATION

Managers and administrators	18 989
Professionals and associate professionals	20 706
Clerks	15 097
Service workers and shop sales workers	10 800
Skilled agricultural and fishery workers	21
Craft and related workers	6 995
Plant and machine operators and assemblers	3 902
Elementary occupations	18 586
Armed forces and occupations not classifiable	107
N.A. (Persons unemployed or economically inactive)	78 771

MARITAL STATUS

	Male	Female
Never married	23 772	23 166
Married	43 917	43 259
Widowed	1 798	7 372
Divorced / Separated	1 231	2 131
N.A. (Persons under age 15)	14 163	13 165
Total	84 881	89 093

EDUCATIONAL ATTAINMENT

	Under age 15	Age 15 and over
No schooling / Kindergarten	10 640	13 565
Primary	11 740	25 393
Lower secondary	4 867	18 875
Upper secondary	81	42 526
Matriculation	-	11 841
Tertiary		
Non-degree courses	-	10 772
Degree courses	-	23 674
Total	27 328	146 646

ACTIVITY STATUS

Economically active	
Self-employed	6 051
Employers	9 830
Employees	78 110
Unpaid family workers	1 212
Unemployed persons	2 507
Economically inactive	
Home-makers	18 951
Students	30 496
Of independent means	1 189
Retired persons	17 073
Other economically inactive	8 555

INDUSTRY

Manufacturing	11 482
Construction	4 349
Wholesale, retail and import / export trades, restaurants and hotels	26 078
Transport, storage and communication	6 130
Financing, insurance, real estate and business services	18 936
Community, social and personal services	26 752
Other industries	1 476
N.A. (Persons unemployed or economically inactive)	78 771

MONTHLY INCOME FROM MAIN EMPLOYMENT (HK\$)

Under 1,000	3 056
1,000 - 1,999	1 702
2,000 - 3,999	18 365
4,000 - 5,999	19 107
6,000 - 7,999	12 913
8,000 - 9,999	7 550
10,000 - 14,999	11 073
15,000 - 19,999	5 218
20,000 - 29,999	5 723
30,000 and over	9 284
Unpaid family workers	1 212
N.A. (Persons unemployed or economically inactive)	78 771

Eastern District

<<< STATISTICS BASED ON COMPLETE ENUMERATION >>>

OCCUPIED LIVING QUARTERS		TOTAL :	DOMESTIC HOUSEHOLDS		TOTAL :
		150 076			158 264
TYPE OF LIVING QUARTERS			HOUSEHOLD SIZE		
Permanent housing			One	19 839	
Housing Authority rental blocks			Two	31 188	
Group A			Three	33 106	
Group B			Four	36 432	
Housing Society rental blocks			Five	22 207	
			Six and over	15 492	
Housing Authority home ownership estates					
			ENUMERATED RESIDENTS		
					TOTAL :
					543 889
Private housing blocks			AGE	Male	Female
Self-contained			0 - 4	16 193	15 086
Non self-contained			5 - 9	17 554	16 387
Villas / Bungalows / Modern village houses			10 - 14	19 256	17 773
			15 - 19	19 329	18 012
Simple stone structures			20 - 24	17 782	19 000
Institutions			25 - 29	25 656	29 760
Other permanent housing			30 - 34	29 593	31 590
			35 - 39	26 257	26 924
Temporary housing			40 - 44	23 956	22 770
Roof-top structures			45 - 49	13 151	11 786
Other temporary housing			50 - 54	13 779	12 234
			55 - 59	13 182	12 780
			60 - 64	11 242	12 779
			65 - 69	8 691	10 924
			70 - 74	6 479	8 279
			75 and over	6 065	9 640
			Total	268 165	275 724

<<< ESTIMATES BASED ON SAMPLE ENQUIRY >>>

DOMESTIC HOUSEHOLDS		ESTIMATED TOTAL :	
		158 264	
HOUSEHOLD COMPOSITION		TENURE OF ACCOMMODATION	
One person	19 665	Owner-occupier	95 396
One unextended nuclear family	97 660	Sole tenant	46 427
One vertically extended nuclear family	19 156	Co-tenant	4 292
One horizontally extended nuclear family	3 304	Main tenant	1 541
Two or more nuclear families	9 527	Sub-tenant	4 523
Related persons forming no nuclear family	6 014	Rent free	1 690
Unrelated persons	2 938	Provided by employer	4 395
MONTHLY HOUSEHOLD INCOME (HK\$)		MONTHLY HOUSEHOLD RENT (HK\$)	
Under 2,000	5 537	Zero rent	99 652
2,000 - 3,999	8 024	Under 200	2 226
4,000 - 5,999	13 677	200 - 399	6 844
6,000 - 7,999	14 680	400 - 599	6 728
8,000 - 9,999	14 494	600 - 799	10 608
10,000 - 14,999	30 139	800 - 999	8 060
15,000 - 19,999	21 066	1,000 - 1,999	9 329
20,000 - 29,999	23 113	2,000 - 2,999	3 916
30,000 - 39,999	11 824	3,000 - 4,999	3 870
40,000 - 49,999	6 269	5,000 - 9,999	4 022
50,000 and over	9 441	10,000 and over	3 009

<<<

ESTIMATES BASED ON SAMPLE ENQUIRY

>>>

ENUMERATED RESIDENTS

ESTIMATED TOTAL: 543 889

USUAL LANGUAGE / DIALECT

Cantonese	431 127
English	13 029
Putonghua	9 507
Chiu Chau	3 416
Hakka	2 321
Fukien (including Taiwanese)	33 583
Sze Yap	1 630
Shanghainese	6 000
Other Chinese dialects	4 270
Filipino	797
Japanese	3 027
Other languages	2 666
N.A. (Persons under age 5 or dumb)	32 516

OCCUPATION

Managers and administrators	40 834
Professionals and associate professionals	56 856
Clerks	52 196
Service workers and shop sales workers	31 861
Skilled agricultural and fishery workers	776
Craft and related workers	29 643
Plant and machine operators and assemblers	25 400
Elementary occupations	47 130
Armed forces and occupations not classifiable	176
N.A. (Persons unemployed or economically inactive)	259 017

MARITAL STATUS

	Male	Female
Never married	74 127	63 954
Married	134 258	135 931
Widowed	4 560	23 225
Divorced / Separated	2 217	3 368
N.A. (Persons under age 15)	53 003	49 246
Total	268 165	275 724

EDUCATIONAL ATTAINMENT

	Under age 15	Age 15 and over
No schooling / Kindergarten	39 203	47 363
Primary	44 830	83 314
Lower secondary	18 112	70 475
Upper secondary	104	133 093
Matriculation	-	31 127
Tertiary		
Non-degree courses	-	34 130
Degree courses	-	42 138
Total	102 249	441 640

INDUSTRY

Manufacturing	62 355
Construction	16 000
Wholesale, retail and import / export trades, restaurants and hotels	67 896
Transport, storage and communication	24 203
Financing, insurance, real estate and business services	48 126
Community, social and personal services	62 392
Other industries	3 900
N.A. (Persons unemployed or economically inactive)	259 017

ACTIVITY STATUS

Economically active	
Self-employed	13 142
Employers	19 322
Employees	250 054
Unpaid family workers	2 354
Unemployed persons	7 452
Economically inactive	
Home-makers	61 265
Students	115 945
Of independent means	1 100
Retired persons	46 704
Other economically inactive	26 551

MONTHLY INCOME FROM MAIN EMPLOYMENT (HK\$)

Under 1,000	7 151
1,000 - 1,999	6 510
2,000 - 3,999	50 984
4,000 - 5,999	70 070
6,000 - 7,999	44 758
8,000 - 9,999	25 044
10,000 - 14,999	34 834
15,000 - 19,999	14 801
20,000 - 29,999	14 698
30,000 and over	13 668
Unpaid family workers	2 354
N.A. (Persons unemployed or economically inactive)	259 017

Southern District

<<< STATISTICS BASED ON COMPLETE ENUMERATION >>>

OCCUPIED LIVING QUARTERS		TOTAL :	DOMESTIC HOUSEHOLDS		TOTAL :
		66 415			64 358
TYPE OF LIVING QUARTERS			HOUSEHOLD SIZE		
Permanent housing			One	6 161	
Housing Authority rental blocks			Two	10 360	
Group A			Three	12 379	
Group B			Four	15 456	
Housing Society rental blocks			Five	10 847	
			Six and over	9 155	
Housing Authority home ownership estates			<hr/>		
			ENUMERATED RESIDENTS	TOTAL :	250 866
Private housing blocks			AGE	<i>Male</i>	<i>Female</i>
Self-contained			0 - 4	7 516	7 110
Non self-contained			5 - 9	9 151	8 421
Villas / Bungalows / Modern village houses			10 - 14	9 564	8 873
Simple stone structures			15 - 19	10 476	9 576
Institutions			20 - 24	11 731	11 005
Other permanent housing			25 - 29	13 222	13 425
Temporary housing			30 - 34	12 563	13 220
Roof-top structures			35 - 39	10 897	11 092
Other temporary housing			40 - 44	9 539	9 500
			45 - 49	5 439	5 281
			50 - 54	5 736	5 249
			55 - 59	5 984	5 279
			60 - 64	5 160	5 007
			65 - 69	3 856	3 893
			70 - 74	2 747	3 152
			75 and over	2 712	4 490
			Total	126 293	124 573

<<< ESTIMATES BASED ON SAMPLE ENQUIRY >>>

DOMESTIC HOUSEHOLDS		ESTIMATED TOTAL :	
		64 358	
HOUSEHOLD COMPOSITION		TENURE OF ACCOMMODATION	
One person	6 108	Owner-occupier	20 187
One unextended nuclear family	42 469	Sole tenant	36 751
One vertically extended nuclear family	7 200	Co-tenant	765
One horizontally extended nuclear family	1 150	Main tenant	142
Two or more nuclear families	3 654	Sub-tenant	346
Related persons forming no nuclear family	2 530	Rent free	396
Unrelated persons	1 247	Provided by employer	5 771
MONTHLY HOUSEHOLD INCOME (HK\$)		MONTHLY HOUSEHOLD RENT (HK\$)	
Under 2,000	1 919	Zero rent	23 465
2,000 - 3,999	2 953	Under 200	990
4,000 - 5,999	6 421	200 - 399	4 514
6,000 - 7,999	7 388	400 - 599	6 638
8,000 - 9,999	6 554	600 - 799	13 253
10,000 - 14,999	13 007	800 - 999	4 364
15,000 - 19,999	8 229	1,000 - 1,999	5 967
20,000 - 29,999	7 631	2,000 - 2,999	892
30,000 - 39,999	2 916	3,000 - 4,999	1 393
40,000 - 49,999	1 724	5,000 - 9,999	1 072
50,000 and over	5 616	10,000 and over	1 810

<<< ESTIMATES BASED ON SAMPLE ENQUIRY >>>

ENUMERATED RESIDENTS ESTIMATED TOTAL : 250 866

USUAL LANGUAGE / DIALECT

Cantonese	205 177
English	17 412
Putonghua	1 391
Chiu Chau	2 951
Hakka	797
Fukien (including Taiwanese)	1 480
Sze Yap	586
Shanghainese	764
Other Chinese dialects	1 697
Filipino	473
Japanese	229
Other languages	2 505
N.A. (Persons under age 5 or dumb)	15 404

OCCUPATION

Managers and administrators	11 267
Professionals and associate professionals	19 611
Clerks	20 682
Service workers and shop sales workers	17 036
Skilled agricultural and fishery workers	1 261
Craft and related workers	12 651
Plant and machine operators and assemblers	13 506
Elementary occupations	27 657
Armed forces and occupations not classifiable	821
N.A. (Persons unemployed or economically inactive)	126 374

MARITAL STATUS

	<i>Male</i>	<i>Female</i>
Never married	40 185	32 717
Married	56 433	56 840
Widowed	2 387	9 538
Divorced / Separated	1 057	1 074
N.A. (Persons under age 15)	26 231	24 404
Total	126 293	124 573

INDUSTRY

Manufacturing	22 403
Construction	5 913
Wholesale, retail and import / export trades, restaurants and hotels	27 138
Transport, storage and communication	12 909
Financing, insurance, real estate and business services	18 356
Community, social and personal services	34 013
Other industries	3 760
N.A. (Persons unemployed or economically inactive)	126 374

EDUCATIONAL ATTAINMENT

	<i>Under age 15</i>	<i>Age 15 and over</i>
No schooling / Kindergarten	18 280	32 280
Primary	22 972	45 622
Lower secondary	9 221	31 591
Upper secondary	162	52 702
Matriculation	-	11 275
Tertiary		
Non-degree courses	-	11 027
Degree courses	-	15 734
Total	50 635	200 231

ACTIVITY STATUS

Economically active	
Self-employed	5 163
Employers	6 523
Employees	111 777
Unpaid family workers	1 029
Unemployed persons	4 070
Economically inactive	
Home-makers	27 298
Students	56 985
Of independent means	352
Retired persons	19 819
Other economically inactive	17 850

MONTHLY INCOME FROM MAIN EMPLOYMENT (HK\$)

Under 1,000	3 631
1,000 - 1,999	3 304
2,000 - 3,999	24 696
4,000 - 5,999	38 300
6,000 - 7,999	20 340
8,000 - 9,999	9 348
10,000 - 14,999	9 683
15,000 - 19,999	3 656
20,000 - 29,999	3 231
30,000 and over	7 274
Unpaid family workers	1 029
N.A. (Persons unemployed or economically inactive)	126 374

Yau Tsim District

<<< STATISTICS BASED ON COMPLETE ENUMERATION >>>

OCCUPIED LIVING QUARTERS		TOTAL :	DOMESTIC HOUSEHOLDS		TOTAL :
		30 823			36 051
TYPE OF LIVING QUARTERS			HOUSEHOLD SIZE		
Permanent housing			One	9 951	
Housing Authority rental blocks			Two	8 041	
Group A			Three	6 060	
Group B			Four	5 647	
Housing Society rental blocks			Five	3 385	
			Six and over	2 967	
Housing Authority home ownership estates			ENUMERATED RESIDENTS		
			TOTAL :		108 051
Private housing blocks			AGE	<i>Male</i>	<i>Female</i>
Self-contained			0 - 4	2 719	2 423
Non self-contained			5 - 9	3 048	2 647
Villas / Bungalows / Modern village houses			10 - 14	3 145	2 843
Simple stone structures			15 - 19	3 387	3 331
Institutions			20 - 24	3 865	4 310
Other permanent housing			25 - 29	5 295	5 245
			30 - 34	5 537	5 024
			35 - 39	4 803	4 420
			40 - 44	4 789	3 984
			45 - 49	3 285	2 528
			50 - 54	3 770	2 676
			55 - 59	3 974	2 700
			60 - 64	3 368	2 494
			65 - 69	2 339	2 286
			70 - 74	1 785	1 843
			75 and over	1 681	2 507
			Total	56 790	51 261

<<< ESTIMATES BASED ON SAMPLE ENQUIRY >>>

DOMESTIC HOUSEHOLDS		ESTIMATED TOTAL :	
		36 051	
HOUSEHOLD COMPOSITION		TENURE OF ACCOMMODATION	
One person	10 249	Owner-occupier	17 510
One unextended nuclear family	17 376	Sole tenant	6 274
One vertically extended nuclear family	2 989	Co-tenant	4 193
One horizontally extended nuclear family	785	Main tenant	1 399
Two or more nuclear families	1 426	Sub-tenant	3 477
Related persons forming no nuclear family	1 641	Rent free	814
Unrelated persons	1 585	Provided by employer	2 384
MONTHLY HOUSEHOLD INCOME (HK\$)		MONTHLY HOUSEHOLD RENT (HK\$)	
Under 2,000	2 326	Zero rent	19 826
2,000 - 3,999	3 402	Under 200	473
4,000 - 5,999	4 712	200 - 399	1 269
6,000 - 7,999	4 395	400 - 599	1 263
8,000 - 9,999	3 428	600 - 799	1 341
10,000 - 14,999	6 740	800 - 999	1 261
15,000 - 19,999	3 716	1,000 - 1,999	3 652
20,000 - 29,999	3 816	2,000 - 2,999	2 389
30,000 - 39,999	1 316	3,000 - 4,999	2 460
40,000 - 49,999	816	5,000 - 9,999	1 697
50,000 and over	1 384	10,000 and over	420

<<<

ESTIMATES BASED ON SAMPLE ENQUIRY

>>>

ENUMERATED RESIDENTS

ESTIMATED TOTAL : 108 051

USUAL LANGUAGE / DIALECT

Cantonese	86 857
English	5 118
Putonghua	1 503
Chiu Chau	775
Hakka	471
Fukien (including Taiwanese)	482
Sze Yap	450
Shanghainese	1 596
Other Chinese dialects	1 066
Filipino	793
Japanese	312
Other languages	3 276
N.A. (Persons under age 5 or dumb)	5 352

OCCUPATION

Managers and administrators	8 309
Professionals and associate professionals	8 873
Clerks	7 337
Service workers and shop sales workers	10 734
Skilled agricultural and fishery workers	15
Craft and related workers	6 862
Plant and machine operators and assemblers	3 620
Elementary occupations	11 076
Armed forces and occupations not classifiable	344
N.A. (Persons unemployed or economically inactive)	50 881

MARITAL STATUS

	Male	Female
Never married	17 360	12 726
Married	28 773	25 461
Widowed	920	4 208
Divorced / Separated	825	953
N.A. (Persons under age 15)	8 912	7 913
Total	56 790	51 261

EDUCATIONAL ATTAINMENT

	Under age 15	Age 15 and over
No schooling / Kindergarten	6 474	10 780
Primary	7 352	22 196
Lower secondary	2 967	15 462
Upper secondary	32	24 823
Matriculation	-	5 708
Tertiary		
Non-degree courses	-	4 591
Degree courses	-	7 666
Total	16 825	91 226

ACTIVITY STATUS

Economically active	
Self-employed	6 018
Employers	5 013
Employees	45 112
Unpaid family workers	1 027
Unemployed persons	1 614
Economically inactive	
Home-makers	13 278
Students	19 790
Of independent means	389
Retired persons	10 532
Other economically inactive	5 278

INDUSTRY

Manufacturing	10 521
Construction	3 269
Wholesale, retail and import / export trades, restaurants and hotels	20 347
Transport, storage and communication	5 341
Financing, insurance, real estate and business services	5 281
Community, social and personal services	11 910
Other industries	501
N.A. (Persons unemployed or economically inactive)	50 881

MONTHLY INCOME FROM MAIN EMPLOYMENT (HK\$)

Under 1,000	2 362
1,000 - 1,999	1 684
2,000 - 3,999	11 483
4,000 - 5,999	14 838
6,000 - 7,999	9 453
8,000 - 9,999	4 745
10,000 - 14,999	6 021
15,000 - 19,999	2 131
20,000 - 29,999	1 621
30,000 and over	1 805
Unpaid family workers	1 027
N.A. (Persons unemployed or economically inactive)	50 881

Mong Kok District

<<< STATISTICS BASED ON COMPLETE ENUMERATION >>>

OCCUPIED LIVING QUARTERS		TOTAL :	DOMESTIC HOUSEHOLDS		TOTAL :		
		43 592			57 351		
TYPE OF LIVING QUARTERS			HOUSEHOLD SIZE				
Permanent housing			One			15 621	
Housing Authority rental blocks			Two			12 730	
Group A			Three			9 925	
Group B			Four			9 265	
Housing Society rental blocks			Five			5 455	
			Six and over			4 355	
Housing Authority home ownership estates							
Private housing blocks			ENUMERATED RESIDENTS		TOTAL :	165 430	
Self-contained			AGE		<i>Male</i>	<i>Female</i>	
Non self-contained			0 - 4			4 679	
Villas / Bungalows / Modern village houses			5 - 9			4 919	
Simple stone structures			10 - 14			4 766	
Institutions			15 - 19			5 583	
Other permanent housing			20 - 24			6 258	
Roof-top structures			25 - 29			8 566	
Other temporary housing			30 - 34			9 830	
			35 - 39			8 211	
			40 - 44			6 945	
			45 - 49			4 643	
			50 - 54			5 556	
			55 - 59			6 071	
			60 - 64			5 160	
			65 - 69			3 453	
			70 - 74			2 280	
			75 and over			2 162	
			Total			89 082	
						76 348	

<<< ESTIMATES BASED ON SAMPLE ENQUIRY >>>

DOMESTIC HOUSEHOLDS		ESTIMATED TOTAL :	
		57 351	
HOUSEHOLD COMPOSITION		TENURE OF ACCOMMODATION	
One person	15 731	Owner-occupier	31 231
One unextended nuclear family	27 832	Sole tenant	6 274
One vertically extended nuclear family	4 805	Co-tenant	8 672
One horizontally extended nuclear family	1 217	Main tenant	1 760
Two or more nuclear families	2 426	Sub-tenant	7 139
Related persons forming no nuclear family	3 298	Rent free	1 199
Unrelated persons	2 042	Provided by employer	1 076
MONTHLY HOUSEHOLD INCOME (HK\$)		MONTHLY HOUSEHOLD RENT (HK\$)	
Under 2,000	4 486	Zero rent	33 191
2,000 - 3,999	6 993	Under 200	926
4,000 - 5,999	8 876	200 - 399	2 761
6,000 - 7,999	7 954	400 - 599	2 317
8,000 - 9,999	5 818	600 - 799	2 957
10,000 - 14,999	10 065	800 - 999	2 709
15,000 - 19,999	5 390	1,000 - 1,999	6 062
20,000 - 29,999	4 639	2,000 - 2,999	3 074
30,000 - 39,999	1 737	3,000 - 4,999	2 701
40,000 - 49,999	544	5,000 - 9,999	615
50,000 and over	849	10,000 and over	38

<<<

ESTIMATES BASED ON SAMPLE ENQUIRY

>>>

ENUMERATED RESIDENTS

ESTIMATED TOTAL : 165 430

USUAL LANGUAGE / DIALECT

Cantonese	146 310
English	844
Putonghua	1 246
Chiu Chau	535
Hakka	966
Fukien (including Taiwanese)	578
Sze Yap	2 294
Shanghainese	758
Other Chinese dialects	2 070
Filipino	69
Japanese	30
Other languages	464
N.A. (Persons under age 5 or dumb)	9 266

OCCUPATION

Managers and administrators	8 335
Professionals and associate professionals	10 413
Clerks	12 148
Service workers and shop sales workers	14 719
Skilled agricultural and fishery workers	31
Craft and related workers	15 884
Plant and machine operators and assemblers	10 148
Elementary occupations	16 060
Armed forces and occupations not classifiable	51
N.A. (Persons unemployed or economically inactive)	77 641

MARITAL STATUS

	Male	Female
Never married	27 317	17 949
Married	44 580	37 391
Widowed	1 630	6 517
Divorced / Separated	1 191	1 650
N.A. (Persons under age 15)	14 364	12 841
Total	89 082	76 348

EDUCATIONAL ATTAINMENT

	Under age 15	Age 15 and over
No schooling / Kindergarten	11 283	15 342
Primary	11 588	39 049
Lower secondary	4 320	28 341
Upper secondary	14	35 325
Matriculation	-	6 794
Tertiary		
Non-degree courses	-	6 684
Degree courses	-	6 690
Total	27 205	138 225

ACTIVITY STATUS

Economically active	
Self-employed	6 491
Employers	6 424
Employees	73 408
Unpaid family workers	1 466
Unemployed persons	2 944
Economically inactive	
Home-makers	18 036
Students	31 183
Of independent means	459
Retired persons	16 106
Other economically inactive	8 913

INDUSTRY

Manufacturing	23 795
Construction	8 750
Wholesale, retail and import / export trades, restaurants and hotels	25 579
Transport, storage and communication	8 290
Financing, insurance, real estate and business services	7 259
Community, social and personal services	13 055
Other industries	1 061
N.A. (Persons unemployed or economically inactive)	77 641

MONTHLY INCOME FROM MAIN EMPLOYMENT (HK\$)

Under 1,000	4 253
1,000 - 1,999	3 610
2,000 - 3,999	18 265
4,000 - 5,999	25 631
6,000 - 7,999	15 318
8,000 - 9,999	7 083
10,000 - 14,999	7 640
15,000 - 19,999	2 385
20,000 - 29,999	1 413
30,000 and over	725
Unpaid family workers	1 466
N.A. (Persons unemployed or economically inactive)	77 641

Sham Shui Po District

<<< STATISTICS BASED ON COMPLETE ENUMERATION >>>

OCCUPIED LIVING QUARTERS TOTAL : 100 030		DOMESTIC HOUSEHOLDS TOTAL : 114 956	
TYPE OF LIVING QUARTERS		HOUSEHOLD SIZE	
Permanent housing		One	23 906
Housing Authority rental blocks		Two	22 904
Group A	39 395	Three	21 255
Group B	956	Four	21 656
Housing Society rental blocks	—	Five	13 928
		Six and over	11 307
Housing Authority home ownership estates	1 993	ENUMERATED RESIDENTS TOTAL : 369 951	
Private housing blocks		AGE	
Self-contained	51 087		<i>Male</i> <i>Female</i>
Non self-contained	32	0 - 4	10 140 9 236
Villas / Bungalows / Modern village houses	333	5 - 9	11 699 10 631
Simple stone structures	30	10 - 14	11 654 10 622
Institutions	1 024	15 - 19	11 983 10 801
Other permanent housing	1 984	20 - 24	14 488 13 657
Temporary housing		25 - 29	20 250 18 698
Roof-top structures	727	30 - 34	21 414 18 049
Other temporary housing	2 469	35 - 39	17 512 14 307
		40 - 44	14 153 11 263
		45 - 49	8 838 6 940
		50 - 54	10 173 8 199
		55 - 59	11 590 9 797
		60 - 64	10 768 9 691
		65 - 69	8 290 8 318
		70 - 74	5 868 6 397
		75 and over	5 690 8 835
		Total	194 510 175 441

<<< ESTIMATES BASED ON SAMPLE ENQUIRY >>>

DOMESTIC HOUSEHOLDS		ESTIMATED TOTAL : 114 956	
HOUSEHOLD COMPOSITION		TENURE OF ACCOMMODATION	
One person	24 008	Owner-occupier	40 936
One unextended nuclear family	61 770	Sole tenant	49 687
One vertically extended nuclear family	13 098	Co-tenant	12 318
One horizontally extended nuclear family	2 106	Main tenant	1 342
Two or more nuclear families	5 492	Sub-tenant	6 897
Related persons forming no nuclear family	5 905	Rent free	1 175
Unrelated persons	2 577	Provided by employer	2 601
MONTHLY HOUSEHOLD INCOME (HK\$)		MONTHLY HOUSEHOLD RENT (HK\$)	
Under 2,000	6 889	Zero rent	43 632
2,000 - 3,999	12 619	Under 200	2 947
4,000 - 5,999	17 652	200 - 399	9 861
6,000 - 7,999	15 971	400 - 599	14 402
8,000 - 9,999	12 151	600 - 799	16 332
10,000 - 14,999	20 764	800 - 999	10 386
15,000 - 19,999	11 060	1,000 - 1,999	10 749
20,000 - 29,999	9 865	2,000 - 2,999	2 876
30,000 - 39,999	3 598	3,000 - 4,999	2 117
40,000 - 49,999	1 708	5,000 - 9,999	1 183
50,000 and over	2 679	10,000 and over	471

<<<

ESTIMATES BASED ON SAMPLE ENQUIRY

>>>

ENUMERATED RESIDENTS

ESTIMATED TOTAL: 369 951

USUAL LANGUAGE / DIALECT

Cantonese	324 072
English	4 152
Putonghua	2 149
Chiu Chau	4 259
Hakka	3 236
Fukien (including Taiwanese)	935
Sze Yap	3 917
Shanghainese	2 024
Other Chinese dialects	3 071
Filipino	242
Japanese	453
Other languages	1 139
N.A. (Persons under age 5 or dumb)	20 302

OCCUPATION

Managers and administrators	17 294
Professionals and associate professionals	23 218
Clerks	27 344
Service workers and shop sales workers	25 677
Skilled agricultural and fishery workers	58
Craft and related workers	31 131
Plant and machine operators and assemblers	25 426
Elementary occupations	36 747
Armed forces and occupations not classifiable	113
N.A. (Persons unemployed or economically inactive)	182 943

MARITAL STATUS

	Male	Female
Never married	60 770	41 815
Married	94 160	83 991
Widowed	4 354	17 253
Divorced / Separated	1 733	1 893
N.A. (Persons under age 15)	33 493	30 489
Total	194 510	175 441

EDUCATIONAL ATTAINMENT

	Under age 15	Age 15 and over
No schooling / Kindergarten	24 685	41 298
Primary	28 489	89 130
Lower secondary	10 728	56 718
Upper secondary	80	76 946
Matriculation	-	12 308
Tertiary		
Non-degree courses	-	14 820
Degree courses	-	14 749
Total	63 982	305 969

ACTIVITY STATUS

Economically active	
Self-employed	11 479
Employers	11 866
Employees	161 295
Unpaid family workers	2 368
Unemployed persons	7 201
Economically inactive	
Home-makers	41 384
Students	72 643
Of independent means	761
Retired persons	40 281
Other economically inactive	20 673

INDUSTRY

Manufacturing	60 407
Construction	14 525
Wholesale, retail and import/export trades, restaurants and hotels	45 943
Transport, storage and communication	16 270
Financing, insurance, real estate and business services	15 905
Community, social and personal services	32 012
Other industries	1 946
N.A. (Persons unemployed or economically inactive)	182 943

MONTHLY INCOME FROM MAIN EMPLOYMENT (HK\$)

Under 1,000	7 233
1,000 - 1,999	6 779
2,000 - 3,999	42 263
4,000 - 5,999	57 346
6,000 - 7,999	30 782
8,000 - 9,999	13 669
10,000 - 14,999	14 619
15,000 - 19,999	4 383
20,000 - 29,999	4 148
30,000 and over	3 418
Unpaid family workers	2 368
N.A. (Persons unemployed or economically inactive)	182 943

Kowloon City District

<<< STATISTICS BASED ON COMPLETE ENUMERATION >>>

OCCUPIED LIVING QUARTERS TOTAL: 102 807

TYPE OF LIVING QUARTERS

Permanent housing	
Housing Authority rental blocks	
Group A	15 364
Group B	-
Housing Society rental blocks	4 699
Housing Authority home ownership estates	1 730
Private housing blocks	
Self-contained	74 258
Non self-contained	134
Villas / Bungalows / Modern village houses	432
Simple stone structures	167
Institutions	1 066
Other permanent housing	3 061
Temporary housing	
Roof-top structures	628
Other temporary housing	1 268

DOMESTIC HOUSEHOLDS TOTAL: 114 914

HOUSEHOLD SIZE

One	18 907
Two	21 823
Three	22 687
Four	23 868
Five	15 499
Six and over	12 130

ENUMERATED RESIDENTS TOTAL: 389 839

AGE

	Male	Female
0 - 4	10 538	9 727
5 - 9	11 711	10 848
10 - 14	12 621	11 728
15 - 19	14 610	13 694
20 - 24	15 269	16 488
25 - 29	18 825	21 289
30 - 34	19 200	19 540
35 - 39	16 067	16 915
40 - 44	15 262	15 393
45 - 49	10 234	9 606
50 - 54	11 540	10 034
55 - 59	11 349	10 012
60 - 64	9 598	9 318
65 - 69	7 092	7 628
70 - 74	4 675	5 870
75 and over	4 789	8 369
Total	193 380	196 459

<<< ESTIMATES BASED ON SAMPLE ENQUIRY >>>

DOMESTIC HOUSEHOLDS

ESTIMATED TOTAL: 114 914

HOUSEHOLD COMPOSITION

One person	18 599
One unextended nuclear family	67 467
One vertically extended nuclear family	13 079
One horizontally extended nuclear family	2 181
Two or more nuclear families	6 167
Related persons forming no nuclear family	4 614
Unrelated persons	2 807

TENURE OF ACCOMMODATION

Owner-occupier	60 242
Sole tenant	32 128
Co-tenant	8 940
Main tenant	1 718
Sub-tenant	6 226
Rent free	1 451
Provided by employer	4 209

MONTHLY HOUSEHOLD INCOME (HK\$)

Under 2,000	4 968
2,000 - 3,999	8 399
4,000 - 5,999	13 196
6,000 - 7,999	13 116
8,000 - 9,999	11 400
10,000 - 14,999	21 464
15,000 - 19,999	12 970
20,000 - 29,999	14 227
30,000 - 39,999	5 917
40,000 - 49,999	3 271
50,000 and over	5 986

MONTHLY HOUSEHOLD RENT (HK\$)

Zero rent	63 820
Under 200	1 898
200 - 399	4 518
400 - 599	7 307
600 - 799	8 443
800 - 999	8 374
1,000 - 1,999	10 793
2,000 - 2,999	3 285
3,000 - 4,999	2 894
5,000 - 9,999	1 859
10,000 and over	1 723

<<<

ESTIMATES BASED ON SAMPLE ENQUIRY

>>>

ENUMERATED RESIDENTS

ESTIMATED TOTAL: 389 839

USUAL LANGUAGE / DIALECT

Cantonese	307 897
English	11 075
Putonghua	5 282
Chiu Chau	5 563
Hakka	3 676
Fukien (including Taiwanese)	14 431
Sze Yap	1 816
Shanghainese	7 035
Other Chinese dialects	7 312
Filipino	629
Japanese	1 168
Other languages	2 592
N.A. (Persons under age 5 or dumb)	21 363

OCCUPATION

Managers and administrators	25 220
Professionals and associate professionals	34 235
Clerks	31 115
Service workers and shop sales workers	27 433
Skilled agricultural and fishery workers	51
Craft and related workers	25 751
Plant and machine operators and assemblers	22 204
Elementary occupations	35 384
Armed forces and occupations not classifiable	545
N.A. (Persons unemployed or economically inactive)	187 901

MARITAL STATUS

	<i>Male</i>	<i>Female</i>
Never married	56 583	50 493
Married	96 586	94 772
Widowed	3 626	16 309
Divorced / Separated	1 715	2 582
N.A. (Persons under age 15)	34 870	32 303
Total	193 380	196 459

EDUCATIONAL ATTAINMENT

	<i>Under age 15</i>	<i>Age 15 and over</i>
No schooling / Kindergarten	25 418	34 945
Primary	30 213	70 058
Lower secondary	11 410	56 625
Upper secondary	132	91 824
Matriculation	—	19 862
Tertiary		
Non-degree courses	—	22 299
Degree courses	—	27 053
Total	67 173	322 666

ACTIVITY STATUS

Economically active	
Self-employed	9 793
Employers	16 365
Employees	173 519
Unpaid family workers	2 261
Unemployed persons	6 715
Economically inactive	
Home-makers	44 946
Students	80 248
Of independent means	776
Retired persons	36 481
Other economically inactive	18 735

INDUSTRY

Manufacturing	57 201
Construction	10 893
Wholesale, retail and import / export trades, restaurants and hotels	50 196
Transport, storage and communication	16 818
Financing, insurance, real estate and business services	21 565
Community, social and personal services	42 866
Other industries	2 399
N.A. (Persons unemployed or economically inactive)	187 901

MONTHLY INCOME FROM MAIN EMPLOYMENT (HK\$)

Under 1,000	7 057
1,000 - 1,999	5 831
2,000 - 3,999	41 780
4,000 - 5,999	54 743
6,000 - 7,999	30 151
8,000 - 9,999	15 643
10,000 - 14,999	20 893
15,000 - 19,999	8 584
20,000 - 29,999	7 487
30,000 and over	7 508
Unpaid family workers	2 261
N.A. (Persons unemployed or economically inactive)	187 901

Wong Tai Sin District

<<< STATISTICS BASED ON COMPLETE ENUMERATION >>>

OCCUPIED LIVING QUARTERS		TOTAL :	DOMESTIC HOUSEHOLDS		TOTAL :
		101 914			103 196
TYPE OF LIVING QUARTERS			HOUSEHOLD SIZE		
Permanent housing			One	12 090	
Housing Authority rental blocks			Two	17 408	
Group A			Three	20 416	
Group B			Four	23 006	
			Five	16 001	
Housing Society rental blocks			Six and over	14 275	
			<hr/>		
Housing Authority home ownership estates			ENUMERATED RESIDENTS		TOTAL :
					377 736
Private housing blocks			AGE	Male	Female
Self-contained			0 - 4	9 820	8 962
Non self-contained			5 - 9	11 153	10 203
Villas / Bungalows / Modern village houses			10 - 14	11 835	11 083
			15 - 19	14 171	13 115
Simple stone structures			20 - 24	18 274	17 055
			25 - 29	26 080	22 463
Institutions			30 - 34	21 811	17 564
			35 - 39	14 225	11 804
Other permanent housing			40 - 44	10 540	9 328
			45 - 49	6 763	6 204
Temporary housing			50 - 54	7 975	8 950
Roof-top structures			55 - 59	10 501	11 807
			60 - 64	11 305	11 136
Other temporary housing			65 - 69	8 864	8 847
			70 - 74	5 764	6 112
			75 and over	5 179	8 843
			Total	194 260	183 476

<<< ESTIMATES BASED ON SAMPLE ENQUIRY >>>

DOMESTIC HOUSEHOLDS		ESTIMATED TOTAL :	
		103 196	
HOUSEHOLD COMPOSITION		TENURE OF ACCOMMODATION	
One person	12 679	Owner-occupier	24 545
One unextended nuclear family	61 784	Sole tenant	73 827
One vertically extended nuclear family	13 792	Co-tenant	1 870
One horizontally extended nuclear family	2 073	Main tenant	196
Two or more nuclear families	5 935	Sub-tenant	559
Related persons forming no nuclear family	6 094	Rent free	485
Unrelated persons	839	Provided by employer	1 714
MONTHLY HOUSEHOLD INCOME (HK\$)		MONTHLY HOUSEHOLD RENT (HK\$)	
Under 2,000	5 342	Zero rent	25 459
2,000 - 3,999	8 397	Under 200	3 150
4,000 - 5,999	14 590	200 - 399	17 336
6,000 - 7,999	15 259	400 - 599	13 009
8,000 - 9,999	12 929	600 - 799	16 164
10,000 - 14,999	23 168	800 - 999	19 072
15,000 - 19,999	11 849	1,000 - 1,999	7 864
20,000 - 29,999	8 572	2,000 - 2,999	485
30,000 - 39,999	2 109	3,000 - 4,999	563
40,000 - 49,999	562	5,000 - 9,999	87
50,000 and over	419	10,000 and over	7

<<<

ESTIMATES BASED ON SAMPLE ENQUIRY

>>>

ENUMERATED RESIDENTS

ESTIMATED TOTAL: 377 736

USUAL LANGUAGE / DIALECT

Cantonese	332 423
English	663
Putonghua	1 424
Chiu Chau	10 536
Hakka	4 098
Fukien (including Taiwanese)	2 549
Sze Yap	1 906
Shanghainese	1 144
Other Chinese dialects	2 820
Filipino	43
Japanese	8
Other languages	447
N.A. (Persons under age 5 or dumb)	19 675

OCCUPATION

Managers and administrators	8 227
Professionals and associate professionals	20 988
Clerks	33 042
Service workers and shop sales workers	26 534
Skilled agricultural and fishery workers	51
Craft and related workers	31 166
Plant and machine operators and assemblers	29 846
Elementary occupations	34 605
Armed forces and occupations not classifiable	139
N.A. (Persons unemployed or economically inactive)	193 138

MARITAL STATUS

	Male	Female
Never married	70 658	50 977
Married	84 213	81 559
Widowed	4 757	19 371
Divorced / Separated	1 824	1 321
N.A. (Persons under age 15)	32 808	30 248
Total	194 260	183 476

EDUCATIONAL ATTAINMENT

	Under age 15	Age 15 and over
No schooling / Kindergarten	23 372	53 243
Primary	28 121	89 687
Lower secondary	11 499	60 147
Upper secondary	64	78 943
Matriculation	-	11 365
Tertiary		
Non-degree courses	-	13 217
Degree courses	-	8 078
Total	63 056	314 680

ACTIVITY STATUS

Economically active	
Self-employed	7 133
Employers	5 508
Employees	170 390
Unpaid family workers	1 567
Unemployed persons	8 145
Economically inactive	
Home-makers	45 493
Students	73 923
Of independent means	503
Retired persons	44 330
Other economically inactive	20 744

INDUSTRY

Manufacturing	60 803
Construction	12 323
Wholesale, retail and import / export trades, restaurants and hotels	39 906
Transport, storage and communication	20 753
Financing, insurance, real estate and business services	17 176
Community, social and personal services	31 641
Other industries	1 996
N.A. (Persons unemployed or economically inactive)	193 138

MONTHLY INCOME FROM MAIN EMPLOYMENT (HK\$)

Under 1,000	6 105
1,000 - 1,999	6 540
2,000 - 3,999	41 369
4,000 - 5,999	64 865
6,000 - 7,999	34 440
8,000 - 9,999	13 692
10,000 - 14,999	11 787
15,000 - 19,999	2 640
20,000 - 29,999	1 223
30,000 and over	370
Unpaid family workers	1 567
N.A. (Persons unemployed or economically inactive)	193 138

Kwun Tong District

<<< STATISTICS BASED ON COMPLETE ENUMERATION >>>

OCCUPIED LIVING QUARTERS		TOTAL :	DOMESTIC HOUSEHOLDS		TOTAL :
		157 912			160 791
TYPE OF LIVING QUARTERS			HOUSEHOLD SIZE		
Permanent housing			One	21 087	
Housing Authority rental blocks			Two	28 673	
Group A			Three	32 139	
Group B			Four	36 714	
			Five	23 984	
Housing Society rental blocks			Six and over	18 194	
			<hr/>		
Housing Authority home ownership estates			ENUMERATED RESIDENTS		
			TOTAL : 564 258		
Private housing blocks			AGE		
				<i>Male</i>	<i>Female</i>
Self-contained			0 - 4	14 974	13 671
Non self-contained			5 - 9	18 926	17 099
			10 - 14	21 132	19 622
Villas / Bungalows / Modern village houses			15 - 19	24 412	22 291
			20 - 24	27 403	25 175
Simple stone structures			25 - 29	32 277	28 886
			30 - 34	28 280	25 670
Institutions			35 - 39	22 322	20 957
			40 - 44	18 827	17 469
Other permanent housing			45 - 49	13 618	11 856
			50 - 54	15 120	13 553
Temporary housing			55 - 59	15 715	14 587
Roof-top structures			60 - 64	14 515	13 114
			65 - 69	10 496	10 599
Other temporary housing			70 - 74	6 895	7 797
			75 and over	6 114	10 886
			Total	291 026	273 232

<<< ESTIMATES BASED ON SAMPLE ENQUIRY >>>

DOMESTIC HOUSEHOLDS		ESTIMATED TOTAL :	
		160 791	
HOUSEHOLD COMPOSITION		TENURE OF ACCOMMODATION	
One person	22 549	Owner-occupier	42 967
One unextended nuclear family	99 594	Sole tenant	109 512
One vertically extended nuclear family	17 854	Co-tenant	3 793
One horizontally extended nuclear family	2 644	Main tenant	354
Two or more nuclear families	7 132	Sub-tenant	1 374
Related persons forming no nuclear family	9 286	Rent free	722
Unrelated persons	1 732	Provided by employer	2 069
MONTHLY HOUSEHOLD INCOME (HK\$)		MONTHLY HOUSEHOLD RENT (HK\$)	
Under 2,000	8 945	Zero rent	44 397
2,000 - 3,999	13 511	Under 200	9 170
4,000 - 5,999	23 043	200 - 399	32 186
6,000 - 7,999	23 420	400 - 599	29 880
8,000 - 9,999	20 193	600 - 799	17 821
10,000 - 14,999	33 312	800 - 999	13 015
15,000 - 19,999	18 250	1,000 - 1,999	10 451
20,000 - 29,999	14 058	2,000 - 2,999	1 463
30,000 - 39,999	3 858	3,000 - 4,999	1 370
40,000 - 49,999	1 055	5,000 - 9,999	1 016
50,000 and over	1 146	10,000 and over	22

<<<

ESTIMATES BASED ON SAMPLE ENQUIRY

>>>

ENUMERATED RESIDENTS

ESTIMATED TOTAL: 564 258

USUAL LANGUAGE / DIALECT

Cantonese	480 954
English	2 046
Putonghua	5 868
Chiu Chau	15 004
Hakka	7 947
Fukien (including Taiwanese)	10 101
Sze Yap	2 062
Shanghaiense	2 875
Other Chinese dialects	5 136
Filipino	76
Japanese	14
Other languages	1 754
N.A. (Persons under age 5 or dumb)	30 421

OCCUPATION

Managers and administrators	14 979
Professionals and associate professionals	32 699
Clerks	47 621
Service workers and shop sales workers	37 210
Skilled agricultural and fishery workers	89
Craft and related workers	46 053
Plant and machine operators and assemblers	45 366
Elementary occupations	54 337
Armed forces and occupations not classifiable	103
N.A. (Persons unemployed or economically inactive)	285 801

MARITAL STATUS

	Male	Female
Never married	96 994	71 227
Married	130 930	124 361
Widowed	5 795	24 570
Divorced / Separated	2 275	2 682
N.A. (Persons under age 15)	55 032	50 392
Total	291 026	273 232

EDUCATIONAL ATTAINMENT

	Under age 15	Age 15 and over
No schooling / Kindergarten	36 138	69 426
Primary	48 522	126 303
Lower secondary	20 685	89 453
Upper secondary	79	117 210
Matriculation	-	18 953
Tertiary		
Non-degree courses	-	23 569
Degree courses	-	13 920
Total	105 424	458 834

ACTIVITY STATUS

Economically active	
Self-employed	11 837
Employers	10 969
Employees	253 174
Unpaid family workers	2 477
Unemployed persons	11 213
Economically inactive	
Home-makers	65 646
Students	124 656
Of independent means	495
Retired persons	52 672
Other economically inactive	31 119

INDUSTRY

Manufacturing	97 728
Construction	19 579
Wholesale, retail and import / export trades, restaurants and hotels	59 154
Transport, storage and communication	28 691
Financing, insurance, real estate and business services	25 380
Community, social and personal services	45 030
Other industries	2 895
N.A. (Persons unemployed or economically inactive)	285 801

MONTHLY INCOME FROM MAIN EMPLOYMENT (HK\$)

Under 1,000	10 285
1,000 - 1,999	11 238
2,000 - 3,999	62 824
4,000 - 5,999	92 945
6,000 - 7,999	47 640
8,000 - 9,999	21 232
10,000 - 14,999	19 709
15,000 - 19,999	5 943
20,000 - 29,999	2 808
30,000 and over	1 356
Unpaid family workers	2 477
N.A. (Persons unemployed or economically inactive)	285 801

Kwai Tsing District

<<< STATISTICS BASED ON COMPLETE ENUMERATION >>>

OCCUPIED LIVING QUARTERS		TOTAL :	DOMESTIC HOUSEHOLDS		TOTAL :
		115 192			116 233
TYPE OF LIVING QUARTERS			HOUSEHOLD SIZE		
Permanent housing			One	12 179	
Housing Authority rental blocks			Two	18 427	
Group A			Three	22 668	
Group B			Four	28 918	
			Five	19 372	
Housing Society rental blocks			Six and over	14 669	
			<hr/>		
Housing Authority home ownership estates			ENUMERATED RESIDENTS		
			TOTAL :		
			430 852		
Private housing blocks			AGE		
			<i>Male</i>		
			<i>Female</i>		
Self-contained			0 - 4	13 170	
Non self-contained			5 - 9	15 999	
			10 - 14	17 081	
			15 - 19	21 873	
Villas / Bungalows / Modern village houses			20 - 24	21 726	
			25 - 29	22 667	
Simple stone structures			30 - 34	21 715	
			35 - 39	16 882	
Institutions			40 - 44	14 675	
			45 - 49	11 873	
Other permanent housing			50 - 54	11 908	
			55 - 59	11 022	
Temporary housing			60 - 64	8 911	
Roof-top structures			65 - 69	6 210	
			70 - 74	4 067	
Other temporary housing			75 and over	3 809	
			Total	223 588	
				207 264	

<<< ESTIMATES BASED ON SAMPLE ENQUIRY >>>

DOMESTIC HOUSEHOLDS		ESTIMATED TOTAL :	
		116 233	
HOUSEHOLD COMPOSITION		TENURE OF ACCOMMODATION	
One person	13 699	Owner-occupier	26 490
One unextended nuclear family	76 254	Sole tenant	82 994
One vertically extended nuclear family	13 302	Co-tenant	2 072
One horizontally extended nuclear family	1 737	Main tenant	240
Two or more nuclear families	4 827	Sub-tenant	796
Related persons forming no nuclear family	5 380	Rent free	809
Unrelated persons	1 034	Provided by employer	2 832
MONTHLY HOUSEHOLD INCOME (HK\$)		MONTHLY HOUSEHOLD RENT (HK\$)	
Under 2,000	4 105	Zero rent	28 761
2,000 - 3,999	8 729	Under 200	3 373
4,000 - 5,999	17 006	200 - 399	14 736
6,000 - 7,999	18 093	400 - 599	19 631
8,000 - 9,999	17 158	600 - 799	21 249
10,000 - 14,999	26 402	800 - 999	19 161
15,000 - 19,999	12 560	1,000 - 1,999	6 809
20,000 - 29,999	8 235	2,000 - 2,999	809
30,000 - 39,999	2 346	3,000 - 4,999	1 099
40,000 - 49,999	671	5,000 - 9,999	486
50,000 and over	928	10,000 and over	119

<<< ESTIMATES BASED ON SAMPLE ENQUIRY >>>

ENUMERATED RESIDENTS ESTIMATED TOTAL : 430 852

USUAL LANGUAGE / DIALECT

Cantonese	372 335
English	1 402
Putonghua	4 601
Chiu Chau	4 548
Hakka	7 528
Fukien (including Taiwanese)	6 080
Sze Yap	1 468
Shanghainese	1 702
Other Chinese dialects	3 133
Filipino	84
Japanese	93
Other languages	1 764
N.A. (Persons under age 5 or dumb)	26 114

OCCUPATION

Managers and administrators	10 000
Professionals and associate professionals	19 811
Clerks	34 260
Service workers and shop sales workers	24 920
Skilled agricultural and fishery workers	197
Craft and related workers	36 797
Plant and machine operators and assemblers	42 861
Elementary occupations	44 631
Armed forces and occupations not classifiable	88
N.A. (Persons unemployed or economically inactive)	217 287

MARITAL STATUS

	<i>Male</i>	<i>Female</i>
Never married	71 428	51 629
Married	100 118	95 611
Widowed	3 834	15 857
Divorced / Separated	1 958	1 813
N.A. (Persons under age 15)	46 250	42 354
Total	223 588	207 264

INDUSTRY

Manufacturing	84 245
Construction	14 962
Wholesale, retail and import / export trades, restaurants and hotels	39 080
Transport, storage and communication	24 922
Financing, insurance, real estate and business services	15 127
Community, social and personal services	32 738
Other industries	2 491
N.A. (Persons unemployed or economically inactive)	217 287

EDUCATIONAL ATTAINMENT

	<i>Under age 15</i>	<i>Age 15 and over</i>
No schooling / Kindergarten	32 171	44 555
Primary	39 851	96 835
Lower secondary	16 530	75 864
Upper secondary	52	88 259
Matriculation	-	12 008
Tertiary		
Non-degree courses	-	15 610
Degree courses	-	9 117
Total	88 604	342 248

MONTHLY INCOME FROM MAIN EMPLOYMENT (HK\$)

ACTIVITY STATUS

Economically active		5 666	
Self-employed	7 753	9 309	
Employers	7 764	51 614	
Employees	196 239	74 491	
Unpaid family workers	1 809	36 174	
Unemployed persons	8 705	15 691	
Economically inactive		12 442	
Home-makers	46 811	15,000 - 19,999	2 892
Students	104 740	20,000 - 29,999	2 309
Of independent means	277	30,000 and over	1 168
Retired persons	31 070	Unpaid family workers	1 809
Other economically inactive	25 684	N.A. (Persons unemployed or economically inactive)	217 287

Tsuen Wan District

<<< STATISTICS BASED ON COMPLETE ENUMERATION >>>

OCCUPIED LIVING QUARTERS		TOTAL :	DOMESTIC HOUSEHOLDS		TOTAL :		
		70 301			76 000		
TYPE OF LIVING QUARTERS			HOUSEHOLD SIZE				
Permanent housing			One			9 574	
Housing Authority rental blocks			Two			14 778	
Group A			Three			15 411	
Group B			Four			17 176	
18 776			Five			10 902	
-			Six and over			8 159	
Housing Society rental blocks							
1 912							
Housing Authority home ownership estates							
-							
Private housing blocks							
Self-contained			ENUMERATED RESIDENTS		TOTAL :	264 448	
40 966							
Non self-contained			AGE			Male	Female
-			0 - 4			8 520	7 572
Villas / Bungalows / Modern village houses			5 - 9			8 484	7 637
2 735			10 - 14			9 579	8 675
Simple stone structures			15 - 19			11 722	10 655
1 422			20 - 24			12 122	12 168
Institutions			25 - 29			14 885	15 977
99			30 - 34			15 512	14 139
Other permanent housing			35 - 39			11 510	10 768
567			40 - 44			9 563	9 100
Temporary housing			45 - 49			7 002	6 277
Roof-top structures			50 - 54			7 346	5 894
348			55 - 59			6 690	5 612
Other temporary housing			60 - 64			5 197	4 604
3 476			65 - 69			3 362	3 411
			70 - 74			2 258	2 547
			75 and over			2 083	3 577
			Total			135 835	128 613

<<< ESTIMATES BASED ON SAMPLE ENQUIRY >>>

DOMESTIC HOUSEHOLDS		ESTIMATED TOTAL :		
		76 000		
HOUSEHOLD COMPOSITION		TENURE OF ACCOMMODATION		
One person	9 604	Owner-occupier	40 449	
One unextended nuclear family	49 022	Sole tenant	25 815	
One vertically extended nuclear family	7 999	Co-tenant	4 817	
One horizontally extended nuclear family	1 417	Main tenant	570	
Two or more nuclear families	3 737	Sub-tenant	2 452	
Related persons forming no nuclear family	3 032	Rent free	511	
Unrelated persons	1 189	Provided by employer	1 386	
MONTHLY HOUSEHOLD INCOME (HK\$)		MONTHLY HOUSEHOLD RENT (HK\$)		
Under 2,000	2 076	Zero rent	41 629	
2,000 - 3,999	4 679	Under 200	730	
4,000 - 5,999	8 733	200 - 399	1 247	
6,000 - 7,999	9 136	400 - 599	9 429	
8,000 - 9,999	8 629	600 - 799	8 839	
10,000 - 14,999	16 937	800 - 999	4 523	
15,000 - 19,999	10 601	1,000 - 1,999	5 502	
20,000 - 29,999	9 621	2,000 - 2,999	1 182	
30,000 - 39,999	3 226	3,000 - 4,999	1 832	
40,000 - 49,999	1 184	5,000 - 9,999	1 051	
50,000 and over	1 178	10,000 and over	36	

<<<

ESTIMATES BASED ON SAMPLE ENQUIRY

>>>

ENUMERATED RESIDENTS

ESTIMATED TOTAL : 264 448

USUAL LANGUAGE / DIALECT

Cantonese	212 009
English	2 494
Putonghua	5 149
Chiu Chau	1 547
Hakka	6 859
Fukien (including Taiwanese)	11 286
Sze Yap	630
Shanghainese	3 096
Other Chinese dialects	3 093
Filipino	342
Japanese	37
Other languages	1 300
N.A. (Persons under age 5 or dumb)	16 606

OCCUPATION

Managers and administrators	12 879
Professionals and associate professionals	19 896
Clerks	24 182
Service workers and shop sales workers	15 305
Skilled agricultural and fishery workers	189
Craft and related workers	20 338
Plant and machine operators and assemblers	23 627
Elementary occupations	22 872
Armed forces and occupations not classifiable	109
N.A. (Persons unemployed or economically inactive)	125 051

MARITAL STATUS

	<i>Male</i>	<i>Female</i>
Never married	39 847	31 019
Married	66 655	64 398
Widowed	1 793	8 040
Divorced / Separated	957	1 272
N.A. (Persons under age 15)	26 583	23 884
Total	135 835	128 613

EDUCATIONAL ATTAINMENT

	<i>Under age 15</i>	<i>Age 15 and over</i>
No schooling / Kindergarten	19 948	22 140
Primary	21 495	49 641
Lower secondary	8 979	44 001
Upper secondary	45	63 132
Matriculation	-	10 987
Tertiary		
Non-degree courses	-	13 369
Degree courses	-	10 711
Total	50 467	213 981

ACTIVITY STATUS

Economically active	
Self-employed	5 997
Employers	8 070
Employees	123 588
Unpaid family workers	1 742
Unemployed persons	4 682
Economically inactive	
Home-makers	27 668
Students	58 548
Of independent means	290
Retired persons	19 578
Other economically inactive	14 285

INDUSTRY

Manufacturing	53 652
Construction	7 919
Wholesale, retail and import / export trades, restaurants and hotels	26 430
Transport, storage and communication	12 799
Financing, insurance, real estate and business services	13 245
Community, social and personal services	23 474
Other industries	1 878
N.A. (Persons unemployed or economically inactive)	125 051

MONTHLY INCOME FROM MAIN EMPLOYMENT (HK\$)

Under 1,000	3 549
1,000 - 1,999	4 056
2,000 - 3,999	28 540
4,000 - 5,999	42 774
6,000 - 7,999	22 464
8,000 - 9,999	11 105
10,000 - 14,999	14 802
15,000 - 19,999	5 244
20,000 - 29,999	3 372
30,000 and over	1 749
Unpaid family workers	1 742
N.A. (Persons unemployed or economically inactive)	125 051

Tuen Mun District

<<< STATISTICS BASED ON COMPLETE ENUMERATION >>>

OCCUPIED LIVING QUARTERS		TOTAL :	100 531	DOMESTIC HOUSEHOLDS		TOTAL :	100 046
TYPE OF LIVING QUARTERS				HOUSEHOLD SIZE			
Permanent housing				One	7 934		
Housing Authority rental blocks				Two	15 403		
Group A				Three	20 419		
Group B				Four	30 285		
				Five	16 410		
Housing Society rental blocks				Six and over	9 595		
				<hr/>			
Housing Authority home ownership estates				ENUMERATED RESIDENTS		TOTAL :	373 366
Private housing blocks				AGE		<i>Male</i>	<i>Female</i>
Self-contained				0 - 4	15 384	14 365	
Non self-contained				5 - 9	21 061	19 574	
Villas / Bungalows / Modern village houses				10 - 14	22 911	21 629	
Simple stone structures				15 - 19	14 993	13 910	
Institutions				20 - 24	9 636	10 558	
Other permanent housing				25 - 29	15 657	18 596	
Temporary housing				30 - 34	21 186	24 019	
Roof-top structures				35 - 39	20 759	21 153	
Other temporary housing				40 - 44	16 780	12 610	
				45 - 49	8 626	4 714	
				50 - 54	6 443	4 075	
				55 - 59	4 833	4 122	
				60 - 64	3 948	4 130	
				65 - 69	3 026	3 581	
				70 - 74	2 136	2 838	
				75 and over	2 326	3 787	
				Total	189 705	183 661	

<<< ESTIMATES BASED ON SAMPLE ENQUIRY >>>

DOMESTIC HOUSEHOLDS		ESTIMATED TOTAL :		100 046
HOUSEHOLD COMPOSITION		TENURE OF ACCOMMODATION		
One person	8 163	Owner-occupier	41 633	
One unextended nuclear family	74 260	Sole tenant	55 492	
One vertically extended nuclear family	9 087	Co-tenant	344	
One horizontally extended nuclear family	1 611	Main tenant	50	
Two or more nuclear families	3 012	Sub-tenant	190	
Related persons forming no nuclear family	2 882	Rent free	763	
Unrelated persons	1 031	Provided by employer	1 574	
MONTHLY HOUSEHOLD INCOME (HK\$)		MONTHLY HOUSEHOLD RENT (HK\$)		
Under 2,000	2 715	Zero rent	42 941	
2,000 - 3,999	5 995	Under 200	1 732	
4,000 - 5,999	15 591	200 - 399	3 038	
6,000 - 7,999	20 794	400 - 599	22 777	
8,000 - 9,999	15 283	600 - 799	22 493	
10,000 - 14,999	21 242	800 - 999	3 415	
15,000 - 19,999	9 520	1,000 - 1,999	1 434	
20,000 - 29,999	5 927	2,000 - 2,999	788	
30,000 - 39,999	1 757	3,000 - 4,999	1 195	
40,000 - 49,999	549	5,000 - 9,999	170	
50,000 and over	673	10,000 and over	63	

<<< ESTIMATES BASED ON SAMPLE ENQUIRY >>>

ENUMERATED RESIDENTS ESTIMATED TOTAL : 373 366

USUAL LANGUAGE / DIALECT

Cantonese	323 671
English	1 621
Putonghua	2 793
Chiu Chau	1 726
Hakka	4 989
Fukien (including Taiwanese)	2 315
Sze Yap	725
Shanghaiense	934
Other Chinese dialects	1 834
Filipino	197
Japanese	15
Other languages	1 747
N.A. (Persons under age 5 or dumb)	30 799

OCCUPATION

Managers and administrators	9 533
Professionals and associate professionals	15 237
Clerks	19 988
Service workers and shop sales workers	20 928
Skilled agricultural and fishery workers	911
Craft and related workers	29 212
Plant and machine operators and assemblers	32 926
Elementary occupations	30 618
Armed forces and occupations not classifiable	632
N.A. (Persons unemployed or economically inactive)	213 381

MARITAL STATUS

	<i>Male</i>	<i>Female</i>
Never married	37 525	28 515
Married	89 730	89 748
Widowed	1 872	8 112
Divorced / Separated	1 222	1 718
N.A. (Persons under age 15)	59 356	55 568
Total	189 705	183 661

EDUCATIONAL ATTAINMENT

	<i>Under age 15</i>	<i>Age 15 and over</i>
No schooling / Kindergarten	37 990	28 563
Primary	55 059	77 672
Lower secondary	21 807	64 059
Upper secondary	68	65 158
Matriculation	-	7 832
Tertiary		
Non-degree courses	-	9 301
Degree courses	-	5 857
Total	114 924	258 442

ACTIVITY STATUS

Economically active	
Self-employed	7 721
Employers	7 205
Employees	143 265
Unpaid family workers	1 794
Unemployed persons	6 198
Economically inactive	
Home-makers	46 486
Students	117 782
Of independent means	470
Retired persons	18 210
Other economically inactive	24 235

INDUSTRY

Manufacturing	56 267
Construction	13 846
Wholesale, retail and import / export trades, restaurants and hotels	28 911
Transport, storage and communication	20 149
Financing, insurance, real estate and business services	9 319
Community, social and personal services	28 212
Other industries	3 281
N.A. (Persons unemployed or economically inactive)	213 381

MONTHLY INCOME FROM MAIN EMPLOYMENT (HK\$)

Under 1,000	5 593
1,000 - 1,999	6 596
2,000 - 3,999	30 249
4,000 - 5,999	47 740
6,000 - 7,999	33 672
8,000 - 9,999	14 613
10,000 - 14,999	13 302
15,000 - 19,999	3 527
20,000 - 29,999	1 829
30,000 and over	1 070
Unpaid family workers	1 794
N.A. (Persons unemployed or economically inactive)	213 381

Yuen Long District

<<< STATISTICS BASED ON COMPLETE ENUMERATION >>>

OCCUPIED LIVING QUARTERS		TOTAL :	DOMESTIC HOUSEHOLDS		TOTAL :
		63 423			63 821
TYPE OF LIVING QUARTERS			HOUSEHOLD SIZE		
Permanent housing			One	10 823	
Housing Authority rental blocks			Two	11 502	
Group A	9 795		Three	11 332	
Group B	2 442		Four	13 532	
Housing Society rental blocks			Five	8 435	
			Six and over	8 197	
Housing Authority home ownership estates					
Private housing blocks			ENUMERATED RESIDENTS		
Self-contained	15 176				TOTAL :
Non self-contained	11				225 278
Villas / Bungalows / Modern village houses	14 598		AGE		
Simple stone structures	10 672			Male	Female
Institutions	1 298		0 - 4	9 792	8 944
Other permanent housing	720		5 - 9	11 182	10 425
Temporary housing			10 - 14	8 941	8 349
Roof-top structures	47		15 - 19	8 531	8 043
Other temporary housing	8 664		20 - 24	8 984	8 612
			25 - 29	12 550	12 387
			30 - 34	13 312	11 889
			35 - 39	9 626	8 266
			40 - 44	6 833	5 427
			45 - 49	4 427	3 254
			50 - 54	4 557	3 544
			55 - 59	4 586	4 225
			60 - 64	4 533	4 180
			65 - 69	3 668	3 593
			70 - 74	2 485	2 629
			75 and over	2 921	4 583
			Total	116 928	108 350

<<< ESTIMATES BASED ON SAMPLE ENQUIRY >>>

DOMESTIC HOUSEHOLDS		ESTIMATED TOTAL :	
		63 821	
HOUSEHOLD COMPOSITION		TENURE OF ACCOMMODATION	
One person	11 401	Owner-occupier	33 813
One unextended nuclear family	38 676	Sole tenant	25 112
One vertically extended nuclear family	5 767	Co-tenant	1 053
One horizontally extended nuclear family	1 292	Main tenant	79
Two or more nuclear families	2 848	Sub-tenant	240
Related persons forming no nuclear family	2 669	Rent free	1 258
Unrelated persons	1 168	Provided by employer	2 266
MONTHLY HOUSEHOLD INCOME (HK\$)		MONTHLY HOUSEHOLD RENT (HK\$)	
Under 2,000	5 832	Zero rent	36 397
2,000 - 3,999	6 057	Under 200	3 394
4,000 - 5,999	9 968	200 - 399	3 818
6,000 - 7,999	11 011	400 - 599	5 256
8,000 - 9,999	6 885	600 - 799	8 307
10,000 - 14,999	11 014	800 - 999	1 501
15,000 - 19,999	5 373	1,000 - 1,999	3 009
20,000 - 29,999	4 765	2,000 - 2,999	1 339
30,000 - 39,999	1 430	3,000 - 4,999	447
40,000 - 49,999	606	5,000 - 9,999	339
50,000 and over	880	10,000 and over	14

<<<

ESTIMATES BASED ON SAMPLE ENQUIRY

>>>

ENUMERATED RESIDENTS

ESTIMATED TOTAL: 225 278

USUAL LANGUAGE / DIALECT

Cantonese	179 740
English	2 751
Putonghua	2 283
Chiu Chau	2 277
Hakka	11 097
Fukien (including Taiwanese)	1 151
Sze Yap	587
Shanghaiinese	228
Other Chinese dialects	1 541
Filipino	83
Japanese	7
Other languages	4 244
N.A. (Persons under age 5 or dumb)	19 289

OCCUPATION

Managers and administrators	6 482
Professionals and associate professionals	9 476
Clerks	12 420
Service workers and shop sales workers	14 070
Skilled agricultural and fishery workers	6 098
Craft and related workers	16 514
Plant and machine operators and assemblers	14 775
Elementary occupations	17 829
Armed forces and occupations not classifiable	2 990
N.A. (Persons unemployed or economically inactive)	124 624

MARITAL STATUS

	Male	Female
Never married	30 096	20 386
Married	54 029	51 978
Widowed	1 932	7 316
Divorced / Separated	956	952
N.A. (Persons under age 15)	29 915	27 718
Total	116 928	108 350

EDUCATIONAL ATTAINMENT

	Under age 15	Age 15 and over
No schooling / Kindergarten	23 956	25 883
Primary	25 687	45 766
Lower secondary	7 863	36 720
Upper secondary	127	41 159
Matriculation	—	6 575
Tertiary		
Non-degree courses	—	6 189
Degree courses	—	5 353
Total	57 633	167 645

ACTIVITY STATUS

Economically active	
Self-employed	10 303
Employers	5 423
Employees	81 919
Unpaid family workers	3 009
Unemployed persons	4 270
Economically inactive	
Home-makers	25 878
Students	57 618
Of independent means	452
Retired persons	20 654
Other economically inactive	15 752

INDUSTRY

Manufacturing	25 551
Construction	10 256
Wholesale, retail and import / export trades, restaurants and hotels	19 711
Transport, storage and communication	9 174
Financing, insurance, real estate and business services	5 901
Community, social and personal services	21 736
Other industries	8 325
N.A. (Persons unemployed or economically inactive)	124 624

MONTHLY INCOME FROM MAIN
EMPLOYMENT (HK\$)

Under 1,000	5 323
1,000 - 1,999	4 584
2,000 - 3,999	22 901
4,000 - 5,999	28 447
6,000 - 7,999	16 893
8,000 - 9,999	6 929
10,000 - 14,999	7 039
15,000 - 19,999	2 539
20,000 - 29,999	1 793
30,000 and over	1 197
Unpaid family workers	3 009
N.A. (Persons unemployed or economically inactive)	124 624

North District

<<< STATISTICS BASED ON COMPLETE ENUMERATION >>>

OCCUPIED LIVING QUARTERS		TOTAL :	DOMESTIC HOUSEHOLDS		TOTAL :
		43 891			44 215
TYPE OF LIVING QUARTERS			HOUSEHOLD SIZE		
Permanent housing			One	5 748	
Housing Authority rental blocks			Two	6 601	
Group A			Three	8 049	
Group B			Four	11 522	
Housing Society rental blocks			Five	6 914	
			Six and over	5 381	
Housing Authority home ownership estates			ENUMERATED RESIDENTS		
Private housing blocks			TOTAL :		162 067
Self-contained			AGE	<i>Male</i>	<i>Female</i>
Non self-contained			0 - 4	7 756	7 167
Villas / Bungalows / Modern village houses			5 - 9	9 318	8 897
Simple stone structures			10 - 14	7 482	6 892
Institutions			15 - 19	5 135	4 807
Other permanent housing			20 - 24	5 231	5 384
Temporary housing			25 - 29	7 958	8 213
Roof-top structures			30 - 34	9 738	9 881
Other temporary housing			35 - 39	7 911	6 832
			40 - 44	5 426	3 593
			45 - 49	3 082	2 003
			50 - 54	2 790	2 206
			55 - 59	2 971	2 796
			60 - 64	2 997	2 758
			65 - 69	2 334	2 417
			70 - 74	1 641	1 827
			75 and over	1 600	3 024
			Total	83 370	78 697

<<< ESTIMATES BASED ON SAMPLE ENQUIRY >>>

DOMESTIC HOUSEHOLDS		ESTIMATED TOTAL :	
		44 215	
HOUSEHOLD COMPOSITION		TENURE OF ACCOMMODATION	
One person	6 346	Owner-occupier	15 033
One unextended nuclear family	28 769	Sole tenant	25 856
One vertically extended nuclear family	4 377	Co-tenant	697
One horizontally extended nuclear family	675	Main tenant	14
Two or more nuclear families	2 075	Sub-tenant	129
Related persons forming no nuclear family	1 623	Rent free	1 276
Unrelated persons	350	Provided by employer	1 210
MONTHLY HOUSEHOLD INCOME (HK\$)		MONTHLY HOUSEHOLD RENT (HK\$)	
Under 2,000	3 670	Zero rent	17 106
2,000 - 3,999	3 590	Under 200	3 505
4,000 - 5,999	7 756	200 - 399	1 947
6,000 - 7,999	9 043	400 - 599	4 706
8,000 - 9,999	5 793	600 - 799	9 183
10,000 - 14,999	7 815	800 - 999	5 313
15,000 - 19,999	3 128	1,000 - 1,999	1 667
20,000 - 29,999	2 389	2,000 - 2,999	441
30,000 - 39,999	539	3,000 - 4,999	218
40,000 - 49,999	201	5,000 - 9,999	122
50,000 and over	291	10,000 and over	7

<<<

ESTIMATES BASED ON SAMPLE ENQUIRY

>>>

ENUMERATED RESIDENTS

ESTIMATED TOTAL: 162 067

USUAL LANGUAGE / DIALECT

Cantonese	128 100
English	626
Putonghua	475
Chiu Chau	1 260
Hakka	12 394
Fukien (including Taiwanese)	239
Sze Yap	441
Shanghainese	133
Other Chinese dialects	1 448
Filipino	40
Japanese	—
Other languages	1 480
N.A. (Persons under age 5 or dumb)	15 431

OCCUPATION

Managers and administrators	2 857
Professionals and associate professionals	5 788
Clerks	8 161
Service workers and shop sales workers	10 815
Skilled agricultural and fishery workers	3 101
Craft and related workers	13 300
Plant and machine operators and assemblers	10 197
Elementary occupations	12 011
Armed forces and occupations not classifiable	705
N.A. (Persons unemployed or economically inactive)	95 132

MARITAL STATUS

	Male	Female
Never married	17 458	12 322
Married	39 667	37 540
Widowed	1 169	5 175
Divorced / Separated	520	704
N.A. (Persons under age 15)	24 556	22 956
Total	83 370	78 697

EDUCATIONAL ATTAINMENT

	Under age 15	Age 15 and over
No schooling / Kindergarten	18 953	16 854
Primary	22 387	35 766
Lower secondary	6 121	26 603
Upper secondary	51	26 030
Matriculation	—	3 624
Tertiary		
Non-degree courses	—	3 486
Degree courses	—	2 192
Total	47 512	114 555

INDUSTRY

Manufacturing	16 178
Construction	7 870
Wholesale, retail and import / export trades, restaurants and hotels	14 864
Transport, storage and communication	7 054
Financing, insurance, real estate and business services	4 538
Community, social and personal services	12 135
Other industries	4 296
N.A. (Persons unemployed or economically inactive)	95 132

ACTIVITY STATUS

Economically active	
Self-employed	5 692
Employers	2 336
Employees	57 441
Unpaid family workers	1 466
Unemployed persons	2 959
Economically inactive	
Home-makers	20 472
Students	45 824
Of independent means	363
Retired persons	14 455
Other economically inactive	11 059

MONTHLY INCOME FROM MAIN EMPLOYMENT (HK\$)

Under 1,000	2 860
1,000 - 1,999	2 410
2,000 - 3,999	14 132
4,000 - 5,999	21 427
6,000 - 7,999	13 334
8,000 - 9,999	5 223
10,000 - 14,999	4 324
15,000 - 19,999	872
20,000 - 29,999	550
30,000 and over	337
Unpaid family workers	1 466
N.A. (Persons unemployed or economically inactive)	95 132

Tai Po District

<<< STATISTICS BASED ON COMPLETE ENUMERATION >>>

OCCUPIED LIVING QUARTERS		TOTAL :	52 963	DOMESTIC HOUSEHOLDS		TOTAL :	53 238
TYPE OF LIVING QUARTERS				HOUSEHOLD SIZE			
Permanent housing				One	4 968		
Housing Authority rental blocks				Two	9 092		
Group A				Three	10 428		
Group B				Four	13 855		
Housing Society rental blocks				Five	8 474		
				Six and over	6 421		
Housing Authority home ownership estates				ENUMERATED RESIDENTS			
Private housing blocks				AGE		TOTAL :	
Self-contained					<i>Male</i>	<i>Female</i>	
Non self-contained				0 - 4	8 532		
Villas / Bungalows / Modern village houses				5 - 9	11 143		
Simple stone structures				10 - 14	9 506		
Institutions				15 - 19	6 942		
Other permanent housing				20 - 24	5 864		
Temporary housing				25 - 29	8 661		
Roof-top structures				30 - 34	12 550		
Other temporary housing				35 - 39	10 837		
				40 - 44	7 465		
				45 - 49	3 918		
				50 - 54	3 418		
				55 - 59	3 024		
				60 - 64	2 670		
				65 - 69	2 059		
				70 - 74	1 682		
				75 and over	1 720		
				Total	99 991		
					97 730		

<<< ESTIMATES BASED ON SAMPLE ENQUIRY >>>

DOMESTIC HOUSEHOLDS		ESTIMATED TOTAL :	53 238
HOUSEHOLD COMPOSITION		TENURE OF ACCOMMODATION	
One person	5 353	Owner-occupier	25 206
One unextended nuclear family	36 511	Sole tenant	26 335
One vertically extended nuclear family	5 561	Co-tenant	471
One horizontally extended nuclear family	936	Main tenant	35
Two or more nuclear families	2 550	Sub-tenant	187
Related persons forming no nuclear family	1 764	Rent free	556
Unrelated persons	563	Provided by employer	448
MONTHLY HOUSEHOLD INCOME (HK\$)		MONTHLY HOUSEHOLD RENT (HK\$)	
Under 2,000	2 178	Zero rent	26 051
2,000 - 3,999	3 125	Under 200	1 393
4,000 - 5,999	7 107	200 - 399	895
6,000 - 7,999	9 024	400 - 599	4 322
8,000 - 9,999	7 324	600 - 799	11 840
10,000 - 14,999	11 626	800 - 999	5 078
15,000 - 19,999	5 524	1,000 - 1,999	1 522
20,000 - 29,999	4 312	2,000 - 2,999	596
30,000 - 39,999	1 323	3,000 - 4,999	985
40,000 - 49,999	578	5,000 - 9,999	222
50,000 and over	1 117	10,000 and over	334

<<<

ESTIMATES BASED ON SAMPLE ENQUIRY

>>>

ENUMERATED RESIDENTS

ESTIMATED TOTAL : 197 721

USUAL LANGUAGE / DIALECT

Cantonese	160 031
English	2 753
Putonghua	1 054
Chiu Chau	1 928
Hakka	7 686
Fukien (including Taiwanese)	957
Sze Yap	594
Shanghainese	516
Other Chinese dialects	4 743
Filipino	22
Japanese	36
Other languages	308
N.A. (Persons under age 5 or dumb)	17 093

OCCUPATION

Managers and administrators	6 517
Professionals and associate professionals	10 871
Clerks	11 549
Service workers and shop sales workers	12 003
Skilled agricultural and fishery workers	1 229
Craft and related workers	15 952
Plant and machine operators and assemblers	13 565
Elementary occupations	14 195
Armed forces and occupations not classifiable	62
N.A. (Persons unemployed or economically inactive)	111 778

MARITAL STATUS

	<i>Male</i>	<i>Female</i>
Never married	20 990	16 351
Married	47 782	47 512
Widowed	1 392	5 957
Divorced / Separated	646	758
N.A. (Persons under age 15)	29 181	27 152
Total	99 991	97 730

EDUCATIONAL ATTAINMENT

	<i>Under age 15</i>	<i>Age 15 and over</i>
No schooling / Kindergarten	21 090	19 716
Primary	27 051	37 341
Lower secondary	8 148	31 473
Upper secondary	44	35 561
Matriculation	—	5 454
Tertiary		
Non-degree courses	—	6 409
Degree courses	—	5 434
Total	56 333	141 388

ACTIVITY STATUS

Economically active	
Self-employed	5 140
Employers	3 913
Employees	75 821
Unpaid family workers	1 069
Unemployed persons	3 260
Economically inactive	
Home-makers	23 456
Students	56 201
Of independent means	369
Retired persons	14 945
Other economically inactive	13 547

INDUSTRY

Manufacturing	24 318
Construction	8 707
Wholesale, retail and import / export trades, restaurants and hotels	17 549
Transport, storage and communication	8 934
Financing, insurance, real estate and business services	7 099
Community, social and personal services	16 701
Other industries	2 635
N.A. (Persons unemployed or economically inactive)	111 778

MONTHLY INCOME FROM MAIN
EMPLOYMENT (HK\$)

Under 1,000	3 285
1,000 - 1,999	3 142
2,000 - 3,999	16 534
4,000 - 5,999	23 180
6,000 - 7,999	16 353
8,000 - 9,999	8 315
10,000 - 14,999	8 583
15,000 - 19,999	2 430
20,000 - 29,999	1 499
30,000 and over	1 553
Unpaid family workers	1 069
N.A. (Persons unemployed or economically inactive)	111 778

Sha Tin District

<<< STATISTICS BASED ON COMPLETE ENUMERATION >>>

OCCUPIED LIVING QUARTERS		TOTAL :	DOMESTIC HOUSEHOLDS		TOTAL :
		134 500			134 972
TYPE OF LIVING QUARTERS		HOUSEHOLD SIZE			
Permanent housing			One	12 738	
Housing Authority rental blocks			Two	22 477	
Group A	58 342		Three	26 183	
Group B	-		Four	36 161	
Housing Society rental blocks		3 631	Five	22 718	
Housing Authority home ownership estates		24 873	Six and over	14 695	
Private housing blocks			ENUMERATED RESIDENTS		
Self-contained	30 941		TOTAL :		494 270
Non self-contained	10		AGE	<i>Male</i>	<i>Female</i>
Villas / Bungalows / Modern village houses	4 540		0 - 4	17 336	15 867
Simple stone structures	1 603		5 - 9	22 657	21 321
Institutions	351		10 - 14	23 958	22 100
Other permanent housing	5 053		15 - 19	20 943	19 563
Temporary housing			20 - 24	16 503	17 370
Roof-top structures	4		25 - 29	21 656	25 670
Other temporary housing	5 152		30 - 34	27 408	29 971
			35 - 39	24 595	25 524
			40 - 44	20 625	18 734
			45 - 49	11 608	8 601
			50 - 54	10 113	7 931
			55 - 59	8 773	8 071
			60 - 64	7 250	7 716
			65 - 69	5 307	6 630
			70 - 74	3 764	5 383
			75 and over	3 723	7 599
			Total	246 219	248 051

<<< ESTIMATES BASED ON SAMPLE ENQUIRY >>>

DOMESTIC HOUSEHOLDS		ESTIMATED TOTAL :	
		134 972	
HOUSEHOLD COMPOSITION		TENURE OF ACCOMMODATION	
One person	14 623	Owner-occupier	56 444
One unextended nuclear family	90 535	Sole tenant	70 824
One vertically extended nuclear family	14 888	Co-tenant	2 042
One horizontally extended nuclear family	2 284	Main tenant	7
Two or more nuclear families	5 763	Sub-tenant	97
Related persons forming no nuclear family	4 398	Rent free	548
Unrelated persons	2 481	Provided by employer	5 010
MONTHLY HOUSEHOLD INCOME (HK\$)		MONTHLY HOUSEHOLD RENT (HK\$)	
Under 2,000	5 144	Zero rent	58 565
2,000 - 3,999	6 669	Under 200	4 258
4,000 - 5,999	15 100	200 - 399	3 898
6,000 - 7,999	19 659	400 - 599	10 517
8,000 - 9,999	17 015	600 - 799	18 462
10,000 - 14,999	29 581	800 - 999	26 102
15,000 - 19,999	16 902	1,000 - 1,999	7 870
20,000 - 29,999	14 449	2,000 - 2,999	1 024
30,000 - 39,999	5 139	3,000 - 4,999	2 391
40,000 - 49,999	2 387	5,000 - 9,999	1 399
50,000 and over	2 927	10,000 and over	486

<<<

ESTIMATES BASED ON SAMPLE ENQUIRY

>>>

ENUMERATED RESIDENTS

ESTIMATED TOTAL : 494 270

USUAL LANGUAGE / DIALECT

Cantonese	428 403
English	6 641
Putonghua	3 592
Chiu Chau	5 340
Hakka	5 172
Fukien (including Taiwanese)	2 878
Sze Yap	1 078
Shanghainese	1 442
Other Chinese dialects	3 351
Filipino	208
Japanese	163
Other languages	1 182
N.A. (Persons under age 5 or dumb)	34 820

OCCUPATION

Managers and administrators	18 850
Professionals and associate professionals	34 713
Clerks	39 589
Service workers and shop sales workers	31 635
Skilled agricultural and fishery workers	334
Craft and related workers	36 811
Plant and machine operators and assemblers	30 226
Elementary occupations	37 236
Armed forces and occupations not classifiable	66
N.A. (Persons unemployed or economically inactive)	264 810

MARITAL STATUS

	Male	Female
Never married	62 243	53 480
Married	114 790	115 779
Widowed	3 337	17 072
Divorced / Separated	1 898	2 432
N.A. (Persons under age 15)	63 951	59 288
Total	246 219	248 051

INDUSTRY

Manufacturing	61 859
Construction	17 045
Wholesale, retail and import / export trades, restaurants and hotels	48 733
Transport, storage and communication	24 035
Financing, insurance, real estate and business services	21 670
Community, social and personal services	53 093
Other industries	3 025
N.A. (Persons unemployed or economically inactive)	264 810

EDUCATIONAL ATTAINMENT

	Under age 15	Age 15 and over
No schooling / Kindergarten	42 517	36 264
Primary	57 284	92 678
Lower secondary	23 331	76 249
Upper secondary	107	106 059
Matriculation	-	17 103
Tertiary		
Non-degree courses	-	20 684
Degree courses	-	21 994
Total	123 239	371 031

ACTIVITY STATUS

Economically active	
Self-employed	9 218
Employers	11 534
Employees	206 863
Unpaid family workers	1 845
Unemployed persons	8 069
Economically inactive	
Home-makers	57 829
Students	136 445
Of independent means	659
Retired persons	35 091
Other economically inactive	26 717

MONTHLY INCOME FROM MAIN EMPLOYMENT (HK\$)

Under 1,000	6 946
1,000 - 1,999	7 346
2,000 - 3,999	39 182
4,000 - 5,999	64 894
6,000 - 7,999	42 684
8,000 - 9,999	23 764
10,000 - 14,999	24 317
15,000 - 19,999	8 282
20,000 - 29,999	5 807
30,000 and over	4 393
Unpaid family workers	1 845
N.A. (Persons unemployed or economically inactive)	264 810

Sai Kung District

<<< STATISTICS BASED ON COMPLETE ENUMERATION >>>

OCCUPIED LIVING QUARTERS		TOTAL :	DOMESTIC HOUSEHOLDS		TOTAL :
		34 085			33 746
TYPE OF LIVING QUARTERS			HOUSEHOLD SIZE		
Permanent housing			One	3 012	
Housing Authority rental blocks			Two	5 266	
Group A			Three	7 069	
Group B			Four	9 410	
Housing Society rental blocks			Five	5 068	
			Six and over	3 921	
Housing Authority home ownership estates					
Private housing blocks			ENUMERATED RESIDENTS		
Self-contained			TOTAL :		
Non self-contained			127 027		
Villas / Bungalows / Modern village houses			AGE		
Simple stone structures				Male	Female
Institutions			0 - 4	5 969	5 601
Other permanent housing			5 - 9	6 728	6 421
Temporary housing			10 - 14	4 613	4 183
Roof-top structures			15 - 19	4 218	3 586
Other temporary housing			20 - 24	4 445	4 413
			25 - 29	6 469	7 717
			30 - 34	8 525	9 131
			35 - 39	6 601	5 636
			40 - 44	4 575	3 627
			45 - 49	2 548	2 121
			50 - 54	2 360	2 018
			55 - 59	2 000	1 924
			60 - 64	1 721	1 873
			65 - 69	1 376	1 585
			70 - 74	970	1 297
			75 and over	992	1 784
			Total	64 110	62 917

<<< ESTIMATES BASED ON SAMPLE ENQUIRY >>>

DOMESTIC HOUSEHOLDS		ESTIMATED TOTAL :	
		33 746	
HOUSEHOLD COMPOSITION		TENURE OF ACCOMMODATION	
One person	3 061	Owner-occupier	16 866
One unextended nuclear family	22 953	Sole tenant	14 908
One vertically extended nuclear family	3 685	Co-tenant	76
One horizontally extended nuclear family	639	Main tenant	20
Two or more nuclear families	1 989	Sub-tenant	73
Related persons forming no nuclear family	944	Rent free	842
Unrelated persons	475	Provided by employer	961
MONTHLY HOUSEHOLD INCOME (HK\$)		MONTHLY HOUSEHOLD RENT (HK\$)	
Under 2,000	1 439	Zero rent	18 310
2,000 - 3,999	1 779	Under 200	1 102
4,000 - 5,999	4 902	200 - 399	681
6,000 - 7,999	5 617	400 - 599	319
8,000 - 9,999	4 397	600 - 799	8 102
10,000 - 14,999	6 790	800 - 999	1 312
15,000 - 19,999	3 352	1,000 - 1,999	1 741
20,000 - 29,999	2 673	2,000 - 2,999	905
30,000 - 39,999	933	3,000 - 4,999	462
40,000 - 49,999	491	5,000 - 9,999	302
50,000 and over	1 373	10,000 and over	510

<<< ESTIMATES BASED ON SAMPLE ENQUIRY >>>

ENUMERATED RESIDENTS ESTIMATED TOTAL : 127 027

USUAL LANGUAGE / DIALECT

Cantonese	98 343
English	4 341
Putonghua	2 011
Chiu Chau	2 192
Hakka	3 880
Fukien (including Taiwanese)	1 325
Sze Yap	268
Shanghainese	414
Other Chinese dialects	1 597
Filipino	145
Japanese	24
Other languages	591
N.A. (Persons under age 5 or dumb)	11 896

OCCUPATION

Managers and administrators	4 550
Professionals and associate professionals	6 435
Clerks	7 959
Service workers and shop sales workers	7 470
Skilled agricultural and fishery workers	543
Craft and related workers	10 157
Plant and machine operators and assemblers	9 815
Elementary occupations	10 872
Armed forces and occupations not classifiable	52
N.A. (Persons unemployed or economically inactive)	69 174

MARITAL STATUS

	<i>Male</i>	<i>Female</i>
Never married	14 871	11 013
Married	30 743	31 288
Widowed	826	3 872
Divorced / Separated	360	539
N.A. (Persons under age 15)	17 310	16 205
Total	64 110	62 917

INDUSTRY

Manufacturing	17 681
Construction	5 259
Wholesale, retail and import / export trades, restaurants and hotels	10 647
Transport, storage and communication	6 661
Financing, insurance, real estate and business services	5 022
Community, social and personal services	11 281
Other industries	1 302
N.A. (Persons unemployed or economically inactive)	69 174

EDUCATIONAL ATTAINMENT

	<i>Under age 15</i>	<i>Age 15 and over</i>
No schooling / Kindergarten	14 694	11 770
Primary	14 805	24 959
Lower secondary	3 949	20 934
Upper secondary	67	23 842
Matriculation	—	4 136
Tertiary		
Non-degree courses	—	3 910
Degree courses	—	3 961
Total	33 515	93 512

ACTIVITY STATUS

Economically active	
Self-employed	2 850
Employers	2 681
Employees	51 698
Unpaid family workers	624
Unemployed persons	1 972
Economically inactive	
Home-makers	15 998
Students	32 521
Of independent means	219
Retired persons	8 766
Other economically inactive	9 698

**MONTHLY INCOME FROM MAIN
EMPLOYMENT (HK\$)**

Under 1,000	2 067
1,000 - 1,999	1 828
2,000 - 3,999	11 556
4,000 - 5,999	17 699
6,000 - 7,999	11 028
8,000 - 9,999	4 903
10,000 - 14,999	4 418
15,000 - 19,999	1 328
20,000 - 29,999	965
30,000 and over	1 437
Unpaid family workers	624
N.A. (Persons unemployed or economically inactive)	69 174

Islands District

<<< STATISTICS BASED ON COMPLETE ENUMERATION >>>

OCCUPIED LIVING QUARTERS		TOTAL :	14 723	DOMESTIC HOUSEHOLDS		TOTAL :	13 413
TYPE OF LIVING QUARTERS				HOUSEHOLD SIZE			
Permanent housing				One		2 973	
Housing Authority rental blocks				Two		3 433	
Group A	857			Three		2 129	
Group B	-			Four		1 991	
Housing Society rental blocks	-			Five		1 339	
Housing Authority home ownership estates	-			Six and over		1 548	
Private housing blocks				ENUMERATED RESIDENTS			
Self-contained	1 900			TOTAL :		46 632	
Non self-contained	1			AGE			
Villas / Bungalows / Modern village houses	7 520				<i>Male</i>	<i>Female</i>	
Simple stone structures	1 960			0 - 4	1 483	1 458	
Institutions	1 252			5 - 9	1 663	1 475	
Other permanent housing	333			10 - 14	1 719	1 598	
Temporary housing				15 - 19	2 178	1 613	
Roof-top structures	9			20 - 24	2 530	1 685	
Other temporary housing	891			25 - 29	2 940	2 513	
				30 - 34	2 778	2 297	
				35 - 39	2 184	1 680	
				40 - 44	1 580	1 105	
				45 - 49	854	679	
				50 - 54	891	698	
				55 - 59	983	942	
				60 - 64	964	972	
				65 - 69	898	936	
				70 - 74	637	708	
				75 and over	745	1 246	
				Total	25 027	21 605	

<<< ESTIMATES BASED ON SAMPLE ENQUIRY >>>

DOMESTIC HOUSEHOLDS		ESTIMATED TOTAL :	13 413
HOUSEHOLD COMPOSITION		TENURE OF ACCOMMODATION	
One person	3 172	Owner-occupier	8 304
One unextended nuclear family	6 937	Sole tenant	4 233
One vertically extended nuclear family	1 167	Co-tenant	90
One horizontally extended nuclear family	151	Main tenant	18
Two or more nuclear families	612	Sub-tenant	31
Related persons forming no nuclear family	533	Rent free	337
Unrelated persons	841	Provided by employer	400
MONTHLY HOUSEHOLD INCOME (HK\$)		MONTHLY HOUSEHOLD RENT (HK\$)	
Under 2,000	1 992	Zero rent	8 892
2,000 - 3,999	1 087	Under 200	270
4,000 - 5,999	1 611	200 - 399	154
6,000 - 7,999	1 296	400 - 599	614
8,000 - 9,999	1 126	600 - 799	438
10,000 - 14,999	1 854	800 - 999	212
15,000 - 19,999	1 152	1,000 - 1,999	859
20,000 - 29,999	1 274	2,000 - 2,999	478
30,000 - 39,999	682	3,000 - 4,999	361
40,000 - 49,999	386	5,000 - 9,999	677
50,000 and over	953	10,000 and over	458

<<<

ESTIMATES BASED ON SAMPLE ENQUIRY

>>>

ENUMERATED RESIDENTS

ESTIMATED TOTAL : 46 632

USUAL LANGUAGE / DIALECT

Cantonese	36 714
English	3 413
Putonghua	241
Chiu Chau	1 075
Hakka	280
Fukien (including Taiwanese)	182
Sze Yap	351
Shanghainese	63
Other Chinese dialects	446
Filipino	75
Japanese	76
Other languages	600
N.A. (Persons under age 5 or dumb)	3 116

OCCUPATION

Managers and administrators	2 331
Professionals and associate professionals	3 403
Clerks	2 764
Service workers and shop sales workers	2 805
Skilled agricultural and fishery workers	734
Craft and related workers	2 328
Plant and machine operators and assemblers	1 031
Elementary occupations	4 454
Armed forces and occupations not classifiable	6
N.A. (Persons unemployed or economically inactive)	26 776

MARITAL STATUS

	<i>Male</i>	<i>Female</i>
Never married	8 676	5 079
Married	10 838	10 232
Widowed	463	1 567
Divorced / Separated	185	196
N.A. (Persons under age 15)	4 865	4 531
Total	25 027	21 605

EDUCATIONAL ATTAINMENT

	<i>Under age 15</i>	<i>Age 15 and over</i>
No schooling / Kindergarten	3 587	8 864
Primary	4 110	8 882
Lower secondary	1 675	5 300
Upper secondary	24	7 375
Matriculation	—	1 721
Tertiary		
Non-degree courses	—	1 914
Degree courses	—	3 180
Total	9 396	37 236

INDUSTRY

Manufacturing	2 264
Construction	1 609
Wholesale, retail and import / export trades, restaurants and hotels	4 804
Transport, storage and communication	1 608
Financing, insurance, real estate and business services	3 076
Community, social and personal services	4 989
Other industries	1 506
N.A. (Persons unemployed or economically inactive)	26 776

ACTIVITY STATUS

Economically active	
Self-employed	2 212
Employers	876
Employees	16 273
Unpaid family workers	495
Unemployed persons	682
Economically inactive	
Home-makers	3 986
Students	10 032
Of independent means	119
Retired persons	5 476
Other economically inactive	6 481

MONTHLY INCOME FROM MAIN EMPLOYMENT (HK\$)

Under 1,000	828
1,000 - 1,999	757
2,000 - 3,999	4 175
4,000 - 5,999	5 067
6,000 - 7,999	2 425
8,000 - 9,999	1 293
10,000 - 14,999	1 860
15,000 - 19,999	816
20,000 - 29,999	877
30,000 and over	1 263
Unpaid family workers	495
N.A. (Persons unemployed or economically inactive)	26 776

Glossary

STATISTICS BASED ON COMPLETE ENUMERATION

OCCUPIED LIVING QUARTERS TOTAL

TYPE OF LIVING QUARTERS

Permanent housing

Housing Authority rental blocks

Group A

Group B

Housing Society rental blocks

Housing Authority home ownership estates

Private housing blocks

Self-contained

Non self-contained

Villas/Bungalows/Modern village houses

Simple stone structures

Institutions

Other permanent housing

Temporary housing

Roof-top structures

Other temporary housing

Marine

Vessels

#

DOMESTIC HOUSEHOLDS

TOTAL

HOUSEHOLD SIZE

One

Two

Three

Four

Five

Six and over

詞彙表

根據全面點算所得統計數字

有人居住的屋宇單位 總計

屋宇單位類型

永久性房屋

房屋委員會租住大廈

甲類

乙類

房屋協會租住大廈

房屋委員會居者有其屋計劃房屋

私人住宅樓宇

有獨立設備的屋宇單位

無獨立設備的屋宇單位

別墅/平房/新型村屋

簡單磚石蓋搭建築物

公共機構/社團院舍

其他永久性房屋

臨時房屋

天台建築物

其他臨時房屋

水上

船艇

#

家庭住戶

總計

住戶人數

一人

二人

三人

四人

五人

六人及以上

Applicable to the basic tables for the whole territory and the marine population only.

只適用於有關全港居民和水上居民的基本統計表。

ENUMERATED RESIDENTS		TOTAL		實際點算居民人數		總計	
AGE	Male	Female	年齡	男	女		
0 - 4			0 - 4				
5 - 9			5 - 9				
10 - 14			10 - 14				
15 - 19			15 - 19				
20 - 24			20 - 24				
25 - 29			25 - 29				
30 - 34			30 - 34				
35 - 39			35 - 39				
40 - 44			40 - 44				
45 - 49			45 - 49				
50 - 54			50 - 54				
55 - 59			55 - 59				
60 - 64			60 - 64				
65 - 69			65 - 69				
70 - 74			70 - 74				
75 and over			七十五歲及以上				
Total			總計				

ESTIMATES BASED ON SAMPLE ENQUIRY

根據抽樣統計調查所作估算

DOMESTIC HOUSEHOLDS ESTIMATED TOTAL

家庭住戶 估算總計

HOUSEHOLD COMPOSITION

住戶結構

One person
 One unextended nuclear family
 One vertically extended nuclear family
 One horizontally extended nuclear family
 Two or more nuclear families
 Related persons forming no nuclear family
 Unrelated persons

單人住戶
 未擴展的單核心家庭住戶
 垂直擴展的單核心家庭住戶
 平向擴展的單核心家庭住戶
 多個核心家庭住戶
 無核心家庭但有親屬關係人士住戶
 無親屬關係人士住戶

TENURE OF ACCOMMODATION

居處租住權

Owner-occupier
 Sole tenant
 Co-tenant
 Main tenant
 Sub-tenant
 Rent free
 Provided by employer
 N.A. (Marine households) #

自置
 全租
 合租
 二房東
 三房客
 免租
 由僱主供給
 不適用(水上住戶) #

Applicable to the basic tables for the whole territory and the marine population only.

只適用於有關全港居民和水上居民的基本統計表。

MONTHLY HOUSEHOLD INCOME (HK\$)

住戶每月收入 (港元)

Under 2,000	2,000 元以下
2,000 - 3,999	2,000 - 3,999
4,000 - 5,999	4,000 - 5,999
6,000 - 7,999	6,000 - 7,999
8,000 - 9,999	8,000 - 9,999
10,000 - 14,999	10,000 - 14,999
15,000 - 19,999	15,000 - 19,999
20,000 - 29,999	20,000 - 29,999
30,000 - 39,999	30,000 - 39,999
40,000 - 49,999	40,000 - 49,999
50,000 and over	50,000 元及以上

MONTHLY HOUSEHOLD RENT (HK\$)

住戶每月租金 (港元)

Zero rent	租金金額是零
Under 200	200 元以下
200 - 399	200 - 399
400 - 599	400 - 599
600 - 799	600 - 799
800 - 999	800 - 999
1,000 - 1,999	1,000 - 1,999
2,000 - 2,999	2,000 - 2,999
3,000 - 4,999	3,000 - 4,999
5,000 - 9,999	5,000 - 9,999
10,000 and over	10,000 元及以上
N.A. (Marine households) #	不適用 (水上住戶) #

ENUMERATED RESIDENTS ESTIMATED TOTAL

實際點算居民人數 估算總計

USUAL LANGUAGE/DIALECT

習用語言 / 方言

Cantonese	廣東話
English	英語
Putonghua	普通話
Chiu Chau	潮州話
Hakka	客家話
Fukien (including Taiwanese)	福建話 (包括台灣話)
Sze Yap	四邑話
Shanghainese	上海話
Other Chinese dialects	其他中國方言
Filipino	菲律賓語
Japanese	日本語
Other languages	其他語言
N.A. (Persons under age 5 or dumb)	不適用 (五歲以下或失語人士)

Applicable to the basic tables for the whole territory and the marine population only.

只適用於有關全港居民和水上居民的基本統計表。

MARITAL STATUS

Never married
 Married
 Widowed
 Divorced/Separated
 N.A. (Persons under age 15)
 Total

Male

Female

婚姻狀況

從未結婚
 已婚
 喪偶
 離婚/分居
 不適用(十五歲以下人士)
 總計

男 女

EDUCATIONAL ATTAINMENT

No schooling/Kindergarten
 Primary
 Lower secondary
 Upper secondary
 Matriculation
 Tertiary
 Non-degree courses
 Degree courses
 Total

Under
 age 15

Age 15
 and over

教育程度

未受教育/幼稚園
 小學
 初中
 高中
 預科
 專上教育
 非學位課程
 學位課程
 總計

十五歲
 以下人士
 十五歲及
 以上人士

ACTIVITY STATUS

Economically active
 Self-employed
 Employers
 Employees
 Unpaid family workers
 Unemployed persons
 Economically inactive
 Home-makers
 Students
 Of independent means
 Retired persons
 Other economically inactive

經濟活動身份

從事經濟活動
 自營作業者
 僱主
 僱員
 無酬家庭從業員
 失業人士
 非從事經濟活動
 料理家務者
 學生
 經濟自給者
 退休人士
 其他非從事經濟活動人士

OCCUPATION

Managers and administrators
Professionals and associate professionals
Clerks
Service workers and shop sales workers
Skilled agricultural and fishery workers
Craft and related workers
Plant and machine operators and assemblers
Elementary occupations
Armed forces and occupations not classifiable
N.A. (Persons unemployed or economically inactive)

職業

經理及行政級人員
專業及輔助專業人員
文員
服務工作及商店銷售人員
漁農業熟練工人
工藝及有關人員
機台及機器操作員及裝配員
非技術工人
軍人及不能分類的職業
不適用(失業及非從事經濟活動人士)

INDUSTRY

Manufacturing
Construction
Wholesale, retail and import/export trades,
restaurants and hotels
Transport, storage and communication
Financing, insurance, real estate
and business services
Community, social and personal services
Other industries
N.A. (Persons unemployed or economically inactive)

行業

製造業
建造業
批發、零售及出入口業、
酒樓及酒店業
運輸、倉庫及通訊業
金融、保險、地產及
商業服務業
社區服務、社會服務及個人服務業
其他行業
不適用(失業及非從事經濟活動人士)

MONTHLY INCOME FROM MAIN EMPLOYMENT (HK\$)

Under 1,000
1,000 - 1,999
2,000 - 3,999
4,000 - 5,999
6,000 - 7,999
8,000 - 9,999
10,000 - 14,999
15,000 - 19,999
20,000 - 29,999
30,000 and over
Unpaid family workers
N.A. (Persons unemployed or economically inactive)

每月主業收入(港元)

1,000 元以下
1,000 - 1,999
2,000 - 3,999
4,000 - 5,999
6,000 - 7,999
8,000 - 9,999
10,000 - 14,999
15,000 - 19,999
20,000 - 29,999
30,000 元及以上
無酬家庭從業員
不適用(失業及非從事經濟活動人士)

Order Form

To: Publications (Sales) Office,
Information Services Department,
1 Battery Path, G/F.,
Central,
Hong Kong.

Title of Publications on the 1991 Population Census	Price*	No. of Copies	Total Amount
	HK\$		HK\$
1. Summary Results (English version)	20
2. Summary Results (Chinese version)	24
3. Tabulations for Tertiary Planning Units: Population by Age and Sex	22
4. Tabulations for District Board Districts and Constituency Areas: Population by Age and Sex	31
5. Tabulations for Tertiary Planning Units: Living Quarters, Households and Population by Type of Living Quarters	22
6. Tabulations for District Board Districts and Constituency Areas: Living Quarters, Households and Population by Type of Living Quarters	24
7. Boundary Maps Complementary to Tabulations for Tertiary Planning Units	72
8. Boundary Maps Complementary to Tabulations for District Board Districts and Constituency Areas	48
9. Basic Tables for Tertiary Planning Units: Hong Kong Island	48
10. Basic Tables for Tertiary Planning Units: Kowloon and New Kowloon	52
11. Basic Tables for Tertiary Planning Units: The New Territories	78
12. Basic Tables for District Board Districts	30

* Prices include postage for local mailings. Postage for overseas mailings will be advised upon receipt of orders.

I enclose cheque No. for HK\$ for the payment of the above publications (cheque should be crossed and made payable to the Hong Kong Government).

Please mail the publications to:

Name:

Address:

Tel. No.: Date:

訂購表格

致：香港中環
炮台里一號地下
政府新聞處
刊物銷售組

一九九一年人口普查刊物名稱	售價*	訂購數量	合計
	港幣		港幣
1. 簡要報告 (英文版)	20
2. 簡要報告 (中文版)	24
3. 有關各規劃統計小區的統計表 按年齡及性別劃分的人口數目	22
4. 有關各區議會分區及選區的統計表 按年齡及性別劃分的人口數目	31
5. 有關各規劃統計小區的統計表 按屋宇單位類型劃分的屋宇單位、住戶及人口數目	22
6. 有關各區議會分區及選區的統計表 按屋宇單位類型劃分的屋宇單位、住戶及人口數目	24
7. 規劃統計小區統計表的附件 —— 區域分界地圖	72
8. 區議會分區及選區統計表的附件 —— 區域分界地圖	48
9. 有關香港島各規劃統計小區的基本統計表	48
10. 有關九龍及新九龍各規劃統計小區的基本統計表	52
11. 有關新界各規劃統計小區的基本統計表	78
12. 有關各區議會分區的基本統計表	30

* 售價已包括本地郵費。海外郵費則於本處收到訂購表格後另行通知。

本人現附上編號 港幣 元支票，購買上述刊物
(支票應予劃綫，「香港政府」抬頭)。

姓名：.....

地址：.....

電話：..... 日期：.....

