

這份刊物的 PDF 版本的文字是從印刷版掃描而成，再利用光學字符識別軟件轉換成電子格式。由於原印刷版本已印製並保存多年，光學字符識別技術未必能準確地識別某些文字或數字。因此，搜索或複製此 PDF 檔案內的文字時應加以注意。

The text of this PDF publication was scanned from its printed version and then converted to electronic text using Optical Character Recognition (OCR) software. Because of the age and condition of the original printed copy, the OCR may not recognise certain characters or figures accurately. Caution should therefore be taken when searching or copying text from this PDF publication.

**綜合住戶統計調查
按季統計報告**
**Quarterly Report
on
General Household Survey**

一九九九年四月至六月
April to June 1999



中華人民共和國
香港特別行政區 政府統計處
Census and Statistics Department
Hong Kong Special Administrative Region
People's Republic of China

贈 閱
COMPLIMENTARY

**綜合住戶統計調查
按季統計報告**

**Quarterly Report
on
General Household Survey**

**一九九九年四月至六月
April to June 1999**

有關本刊物的查詢，請聯絡：

政府統計處 綜合住戶統計調查組（二）

地址：中國香港北角英皇道二百五十號北角城中心五樓

電話：(852) 2887 5508 圖文傳真：(852) 2508 1501

電子郵遞：genenq@censtatd.gcn.gov.hk

Enquiries about this publication can be directed to :

General Household Survey Section (2)

Census and Statistics Department

Address: 5/F, Fortress Tower, 250 King's Road, North Point, Hong Kong, China.

Tel. No.: (852) 2887 5508 Fax. No.: (852) 2508 1501

E-mail : genenq@censtatd.gcn.gov.hk

政府統計處網頁 Home Page of the Census and Statistics Department

<http://www.info.gov.hk/censtatd/>

	頁數 Page
第一部 統計調查結果	PART I SURVEY RESULTS
1. 引言	Introduction 1
2. 統計數字摘要	Summary Statistics 2
3. 統計調查主要結果	Main Survey Findings 3
4. 勞動人口參與率	Labour Force Participation Rate 3
5. 就業人口的特徵	Characteristics of the Employed 3
6. 失業人口的特徵	Characteristics of the Unemployed 5
7. 就業不足人口的特徵	Characteristics of the Underemployed 8
8. 統計表	Tables
表 1 按性別及年齡劃分的勞動人口	Table 1 Labour force by Sex and Age 10
表 2 按婚姻狀況及年齡劃分的女性 勞動人口	Table 2 Female labour force by Marital status and Age 11
表 3 就業人數	Table 3 Employed persons
(A) 按性別及年齡劃分	(A) by Sex and Age 12
(B) 按經濟活動身分劃分	(B) by Activity status 13
(C) 按性別及教育程度劃分	(C) by Sex and Educational attainment 13
(D) 按行業(詳細組別)劃分	(D) by Industry (Detailed group) 15
(E) 按性別及行業劃分	(E) by Sex and Industry 17
(F) 按性別及職業劃分	(F) by Sex and Occupation 20
(G) 按行業及年齡劃分	(G) by Industry and Age 23
(H) 按職業及年齡劃分	(H) by Occupation and Age 24
(I) 按工作時數劃分	(I) by Hours of work 25
(J) 按每月就業收入劃分	(J) by Monthly employment earnings 26
表 4 按主業所屬行業劃分的就業人士 工作時數中位數	Table 4 Median hours of work of employed persons by Industry of main employment 27
表 5 每月就業收入中位數	Table 5 Median monthly employment earnings
(A) 按主業所屬行業劃分	(A) by Industry of main employment 28
(B) 按主業所屬職業劃分	(B) by Occupation of main employment 29
表 6 按在統計前七天內工作少於 三十五小時的原因劃分的 工作少於三十五小時的就業人數	Table 6 Employed persons who worked less than 35 hours by Reason for working less than 35 hours during the seven days before enumeration 30
表 7 失業人數	Table 7 Unemployed persons
(A) 按性別及年齡劃分	(A) by Sex and Age 31
(B) 按性別及教育程度劃分	(B) by Sex and Educational attainment 32
(C) 按持續失業期間劃分	(C) by Duration of unemployment 34

	頁數 Page
表 8 曾工作的失業人數	Table 8 Unemployed persons with a previous job
(A) 按以前從事的行業(詳細組別)劃分	(A) by Previous industry (Detailed group) 35
(B) 按性別及以前從事的行業劃分	(B) by Sex and Previous industry 37
(C) 按性別及以前從事的職業劃分	(C) by Sex and Previous occupation 40
(D) 按以前從事的行業及年齡劃分	(D) by Previous industry and Age 43
(E) 按以前從事的職業及年齡劃分	(E) by Previous occupation and Age 44
(F) 按以前從事的行業及離職方式劃分	(F) by Previous industry and Mode of leaving last job 45
表 9 按以前從事的行業劃分的持續失業期間中位數	Table 9 Median duration of unemployment by Previous industry 48
表 10 求職人數	Table 10 Job-seekers
(A) 按尋找工作的主要方法劃分	(A) by Main action taken to seek work 49
(B) 按期望從事的行業劃分	(B) by Desired industry of employment 50
(C) 按期望從事的職業劃分	(C) by Desired occupation of employment 51
表 11 就業不足人數	Table 11 Underemployed persons
(A) 按性別及年齡劃分	(A) by Sex and Age 52
(B) 按性別及教育程度劃分	(B) by Sex and Educational attainment 53
(C) 按行業(詳細組別)劃分	(C) by Industry (Detailed group) 55
(D) 按性別及行業劃分	(D) by Sex and Industry 57
(E) 按性別及職業劃分	(E) by Sex and Occupation 60
(F) 按行業及年齡劃分	(F) by Industry and Age 63
(G) 按職業及年齡劃分	(G) by Occupation and Age 64
(H) 按工作時數劃分	(H) by Hours of work 65
(I) 按每月就業收入劃分	(I) by Monthly employment earnings 65
9. 統計圖	Charts
圖 1 失業率(經季節性調整)	Chart 1 Unemployment Rates (seasonally adjusted) 66
圖 2 失業人數	Chart 2 Unemployed Persons 66
圖 3 就業不足率	Chart 3 Underemployment Rates 67
圖 4 就業不足人數	Chart 4 Underemployed Persons 67
第二部 統計調查方法	PART II SURVEY METHODOLOGY
1. 統計調查的涵蓋範圍及樣本設計	Survey Coverage and Sample Design 68
2. 統計調查問卷	Survey Questionnaire 69
3. 訪問結果	Enumeration Experience 71
4. 估值的可靠性	Reliability of the Estimates 71
第三部 詞彙釋義	PART III DEFINITION OF TERMS 73
訂閱表格	SUBSCRIPTION FORM 81

第一部 統計調查結果

PART I SURVEY RESULTS

1. 引言

1.1 本報告載列政府統計處於一九九九年第二季所進行的綜合住戶統計調查的結果。

1.2 綜合住戶統計調查是一項抽樣統計調查，自一九八一年八月開始持續進行，旨在搜集有關勞動人口、失業和就業不足的資料。

1.3 在這項統計調查中，計算勞動人口、失業和就業不足數字所採用的定義，基本上遵照國際勞工組織的建議。

1.4 本報告第一部載列統計調查的結果，第二部概述統計調查的方法，第三部提供統計調查所採用的詞彙釋義。

1. Introduction

1.1 This report presents the results of the General Household Survey conducted by the Census and Statistics Department during the second quarter (Q2) of 1999.

1.2 The General Household Survey is a sample survey which has been conducted on a continuous basis since August 1981. Its main objective is to collect information on the labour force, unemployment and underemployment.

1.3 The definitions used in the survey for measuring labour force, unemployment and underemployment follow closely those recommended by the International Labour Organization (ILO).

1.4 Part I of this report gives the survey findings. Part II outlines the survey methodology. Part III provides the definition of terms adopted for the survey.

註釋： (1) 為求簡便，本報告中：
「第一季」指 一月至三月
「第二季」指 四月至六月
「第三季」指 七月至九月
「第四季」指 十月至十二月

(2) 由於進位原因，統計表內個別項目的數字加起來可能與總數略有出入。

(3) 統計表內離中系數超過 25% 的估值會註上星號 (*)，顯示該估值須謹慎闡釋。有關離中系數的技術性詳情，請參閱在第七十一頁的第二部第四節。

Notes: (1) For simplicity, throughout the report: "Q1" stands for January to March, "Q2" for April to June, "Q3" for July to September, and "Q4" for October to December.

(2) Owing to rounding, there may be a slight discrepancy between the sum of individual items and the total as shown in the tables.

(3) In the tables, estimates with coefficient of variation (CV) greater than 25% are marked with an asterisk (*) and should be interpreted with particular caution. For technical details regarding the CV, please see Section 4 of Part II on page 71.

2. 統計數字摘要 Summary Statistics

	1998 第二季 Q2	1999 第一季 Q1	1999 第二季 Q2
勞動人口 The Labour Force			
勞動人口 ('000) Labour force ('000)	3 348.0	3 439.6	3 474.5
男 ('000) Male ('000)	2 036.8	2 078.2	2 093.2
女 ('000) Female ('000)	1 311.2	1 361.4	1 381.4
勞動人口參與率 (%) Labour force participation rate (%)	61.8	62.0	62.4
男 (%) Male (%)	75.5	75.2	75.5
女 (%) Female (%)	48.3	48.9	49.4
就業 Employment			
就業人數 ('000) Employed persons ('000)	3 204.3	3 226.3	3 263.1
統計前七天內工作時數中位數 Median hours of work during the seven days before enumeration	45	45	45
每月就業收入中位數 (港元) Median monthly employment earnings (HK\$)	10,000	10,000 ⁽¹⁾	10,000
失業 Unemployment			
失業人數 ('000) Unemployed persons ('000)	143.7	213.3	211.4
失業率 (%) Unemployment rate (%)			
- 未經調整 Unadjusted	4.3	6.2	6.1
- 按首次求職人士佔勞動人口 比例的季節性差異作出調整 Adjusted for seasonal variations in the proportion of first-time job-seekers in the labour force	4.4	6.2	6.1
就業不足 Underemployment			
就業不足人數 ('000) Underemployed persons ('000)	86.0	104.4	99.8
就業不足率 (%) Underemployment rate (%)	2.6	3.0	2.9

註釋： (1) 收入不包括農曆年花紅／雙糧。
Note： (1) Earnings exclude Chinese New Year bonus/double pay.

3. 統計調查主要結果

3.1 一九九九年第二季統計調查的主要結果如下：

- (a) 勞動人口的估計數字為 3 474 500 人 (表 1)。
- (b) 就業人數估計為 3 263 100 人 (表 3A)。
- (c) 失業人數估計為 211 400 人，佔勞動人口 6.1% (表 7A 和圖 2)。
- (d) 經季節性調整的失業率 (即已按首次求職人士佔勞動人口比例的季節性差異作出調整) 亦為 6.1% (圖 1)。
- (e) 就業不足人數估計為 99 800 人，佔勞動人口 2.9% (表 11A，圖 3 和 4)。

4. 勞動人口參與率

4.1 一九九九年第二季的**勞動人口參與率**估計為 62.4%，而九九年第一季為 62.0%，九八年第二季則為 61.8%。一九九九年第二季相對於九九年第一季及九八年第二季的升幅，從統計觀點而言是顯著的。以絕對數值計，一九九九年第二季**勞動人口**較九九年第一季增加 34 900 人，較九八年第二季則增加 126 500 人 (表 1)。

4.2 男性勞動人口參與率 (75.5%) 遠高於女性勞動人口參與率 (49.4%)。一九九九年第二季與九九年第一季和九八年第二季數字比較，按性別及年齡劃分的勞動人口參與率的情況大致上無顯著變動。在這三季期間，男性勞動人口參與率以三十至四十九歲年齡組別為最高，而女性勞動人口參與率則以二十至二十九歲年齡組別為最高 (表 1)。

4.3 一九九九年第二季，未婚女性勞動人口參與率為 67.9%，較曾結婚女性勞動人口參與率 (42.0%) 明顯為高 (表 2)。

5. 就業人口的特徵

5.1 一九九九年第二季的就業人數估計為 3 263 100 人。在這些**就業人士**中：

- (a) 59.6% 的人士為男性 (表 3A)；
- (b) 男性就業人士的年齡中位數為 39 歲，而女性就業人士則為 35 歲 (表 3A)；
- (c) 88.7% 的人士為僱員 (包括外發工) (表 3B)；

3. Main Survey Findings

3.1 The main findings in respect of Q2 1999 are :

- (a) the estimated size of the labour force was 3 474 500 (Table 1).
- (b) the estimated number of employed persons was 3 263 100 (Table 3A).
- (c) the estimated number of unemployed persons was 211 400, or 6.1% of the labour force (Table 7A and Chart 2).
- (d) the seasonally adjusted unemployment rate (i.e. adjusted for seasonal variations in the proportion of first-time job-seekers in the labour force) was also 6.1% (Chart 1).
- (e) the estimated number of underemployed persons was 99 800, or 2.9% of the labour force (Table 11A, Charts 3 and 4).

4. Labour Force Participation Rate

4.1 The estimated *labour force participation rate (LFPR)* for Q2 1999 was 62.4%, as against 62.0% for Q1 1999 and 61.8% for Q2 1998. The increases over Q1 1999 and Q2 1998 are both statistically significant. In absolute terms, the *labour force* increased by 34 900 over Q1 1999 and by 126 500 over Q2 1998 (Table 1).

4.2 The LFPR for males (75.5%) was much higher than that for females (49.4%). Compared with Q1 1999 and Q2 1998, there were no marked changes in the patterns of the sex-age-specific LFPRs in Q2 1999. In all these quarters, the LFPR was highest in the 30-49 age group for males and in the 20-29 age group for females (Table 1).

4.3 The LFPR for never married females for Q2 1999 was 67.9%, significantly higher than that for ever married females (42.0%) (Table 2).

5. Characteristics of the Employed

5.1 The estimated number of employed persons in Q2 1999 was 3 263 100. Among those *employed*:

- (a) 59.6% were males (Table 3A);
- (b) the median age of male workers was 39 and that of female workers was 35 (Table 3A);
- (c) 88.7% were employees (including outworkers) (Table 3B);

- (d) 57.8% 的人士有中學或預科程度，23.7% 有專上教育程度，16.8% 有小學程度 (表 3C)；
- (e) 29.3% 的人士從事批發、零售、進出口貿易、飲食及酒店業，23.9% 從事社區、社會及個人服務業 (表 3D)；
- (f) 從事進出口貿易業的人士佔最大比例 (佔 11.8%) (表 3D)；
- (g) 就男性而言，佔最大比例的是從事批發、零售、進出口貿易、飲食及酒店業的人士 (佔所有就業人士的 16.0%) 和從事社區、社會及個人服務業的人士 (佔 9.2%)；而女性則以從事社區、社會及個人服務業的人士 (佔 14.7%) 和從事批發、零售、進出口貿易、飲食及酒店業的人士 (佔 13.3%)，佔最大比例 (表 3E)；
- (h) 18.3% 的人士為非技術工人；而 17.5% 及 17.3% 分別為輔助專業人員及文員 (表 3F)；
- (i) 就男性而言，以任職輔助專業人員 (佔所有就業人士的 10.8%) 和工藝及有關人員 (佔 10.2%) 所佔的比例最大；而女性則以文員 (佔 12.3%) 和非技術工人 (佔 10.2%) 所佔的比例最大 (表 3F)；
- (j) 在所有年齡組別中，從事批發、零售、進出口貿易、飲食及酒店業的人士均佔最大比例 (表 3G)；
- (k) 在十五至二十九歲年齡組別中，任職文員的人士佔最大比例；而在三十至四十九歲和五十歲及以上的年齡組別中，則分別以輔助專業人員和非技術工人佔最大比例 (表 3H)；
- (l) 12.6% 的人士在統計前七天內工作少於三十五小時，其中 52.7% 是由於休假所致，18.1% 則由於開工不足 (表 3I 和 6)；
- (m) 就業人士在統計前七天內的工作時數中位數為 45 小時。從事批發、零售、進出口貿易、飲食及酒店業和運輸、倉庫及通訊業的人士的工作時數較長 (表 4)。
- (d) 57.8% had secondary or matriculation education, 23.7% had tertiary education, and 16.8% had primary education (Table 3C);
- (e) 29.3% were in the wholesale, retail and import/export trades, restaurants and hotels sector, and 23.9% in the community, social and personal services sector (Table 3D);
- (f) those in the import/export trades constituted the largest proportion (11.8%) (Table 3D);
- (g) for males, the largest proportions were in the wholesale, retail and import/export trades, restaurants and hotels sector (16.0% of all employed persons) and the community, social and personal services sector (9.2%); for females, the largest proportions were in the community, social and personal services sector (14.7%) and the wholesale, retail and import/export trades, restaurants and hotels sector (13.3%) (Table 3E);
- (h) 18.3% were in elementary occupations, while 17.5% and 17.3% were associate professionals and clerks respectively (Table 3F);
- (i) for males, the largest proportions were associate professionals (10.8% of all employed persons) and craft and related workers (10.2%); for females, the largest proportions were clerks (12.3%) and workers in elementary occupations (10.2%) (Table 3F);
- (j) the largest proportion was in the wholesale, retail and import/export trades, restaurants and hotels sector for all age groups (Table 3G);
- (k) for the 15-29 age group, the largest proportion was clerks, while for the age groups 30-49 and 50 and over, the largest proportion was associate professionals and workers in elementary occupations respectively (Table 3H);
- (l) 12.6% worked less than 35 hours during the seven days before enumeration. Among them, 52.7% did so because they were on vacation/holiday and 18.1% because of slack work (Tables 3I and 6);
- (m) the median hours of work during the seven days before enumeration was 45. Persons engaged in the wholesale, retail and import/export trades, restaurants and hotels sector and the transport, storage and communications sector worked relatively longer hours (Table 4).

5.2 有關就業人士的每月就業收入資料如下：

- (a) 每月就業收入中位數為 10,000 元 (表 3J)；
- (b) 在所有主要行業類別中，以從事金融、保險、地產及商用服務業的人士的每月就業收入中位數為最高 (13,000 元) (表 5A)；
- (c) 專業人員的每月就業收入中位數為最高 (30,000 元)，而非技術工人的每月就業收入中位數則為最低 (5,500 元) (表 5B)。

6. 失業人口的特徵

6.1 一九九九年第二季的失業率估計為 6.1%。按首次求職人士佔勞動人口比例的季節性差異作出調整的失業率亦為 6.1%；而九九年第一季的經季節性調整的失業率為 6.2%，九八年第二季則為 4.4%。一九九九年第二季的經季節性調整的失業率，相對於九九年第一季的跌幅，從統計觀點而言並不顯著；但相對於九八年第二季的升幅，從統計觀點而言是顯著的 (表 7A 和圖 1)。

6.2 一九九九年第二季的失業人數估計為 211 400 人。在這些失業人士中：

- (a) 男性有 148 300 人，女性有 63 200 人。男性的失業率為 7.1%，而女性的失業率則為 4.6% (表 7A 和圖 2)；
- (b) 52.0% 的人士年齡介乎二十至三十九歲，而 36.2% 的人士介乎四十至五十九歲 (表 7A)；
- (c) 在所有年齡組別中，男性的失業率均較女性的失業率為高 (表 7A)；
- (d) 具小學程度的人士的失業率 (7.7%) 為最高 (表 7B)；

5.2 Regarding the *monthly employment earnings of employed persons*:

- (a) the median monthly employment earnings was \$10,000 (Table 3J);
- (b) employed persons in the financing, insurance, real estate and business services sector had the highest median monthly employment earnings of \$13,000 among all major industry sectors (Table 5A);
- (c) employed persons in professional occupations had the highest median monthly employment earnings of \$30,000, while those in elementary occupations had the lowest (\$5,500) (Table 5B).

6. Characteristics of the Unemployed

6.1 The estimated *unemployment rate* for Q2 1999 was 6.1%. After adjusting for seasonal variations in the proportion of first-time job-seekers in the labour force, the rate was also 6.1%; the corresponding seasonally adjusted unemployment rates for Q1 1999 and Q2 1998 were 6.2% and 4.4% respectively. The decrease below Q1 1999 is statistically not significant, while the increase over Q2 1998 is statistically significant (Table 7A and Chart 1).

6.2 The estimated number of unemployed persons in Q2 1999 was 211 400. Among those *unemployed*:

- (a) 148 300 were males and 63 200 were females. The unemployment rate was 7.1% for males and 4.6% for females (Table 7A and Chart 2);
- (b) 52.0% were aged between 20 and 39, while 36.2% were aged between 40 and 59 (Table 7A);
- (c) the unemployment rate for males was higher than that for females for all age groups (Table 7A);
- (d) persons with primary education had the highest unemployment rate (7.7%) (Table 7B);

- (e) 就男性而言，具幼稚園教育程度或未受教育的人士的失業率（11.0%）為最高；女性則以具中學或預科程度的人士的失業率（5.3%）為最高（表 7B）；
- (f) 36.1% 的人士持續失業少於兩個月，而 49.8% 的人士則持續失業三個月或以上。持續失業期間中位數為 91 天（表 7C）；
- (g) 求職人士佔 96.5%。其中 56.5% 的人士用回應或刊登廣告方式作為尋找工作的主要方法，而 28.9% 則向親戚或朋友尋求協助（表 10A）；
- (h) 在求職人士中，20.5% 期望從事批發、零售、進出口貿易、飲食及酒店業（表 10B）；
- (i) 在求職人士中，16.2% 期望任職工藝及有關人員（表 10C）。

- (e) for males, the unemployment rate was highest for those who had kindergarten education or no schooling (11.0%); for females, the unemployment rate was highest for those who had secondary or matriculation education (5.3%) (Table 7B);
- (f) 36.1% had been out of work for less than two months and 49.8%, 3 months or more. The median duration of unemployment was 91 days (Table 7C);
- (g) 96.5% were job-seekers. Among them, 56.5% answered or placed advertisement and 28.9% sought assistance from relatives or friends as their main action taken to seek work (Table 10A);
- (h) among the job-seekers, 20.5% desired to work in the wholesale, retail and import/export trades, restaurants and hotels sector (Table 10B);
- (i) among the job-seekers, 16.2% desired to work as craft and related workers (Table 10C).

6.3 在 193 100 名曾工作的失業人士（不包括重新加入勞動人口的失業人士）中：

6.3 Among the 193 100 *unemployed persons who had a previous job* (not including re-entrants into the labour force):

- (a) 34.2% 的人士以前曾從事批發、零售、進出口貿易、飲食及酒店業（表 8B）；
- (b) 以前從事地基及上蓋工程業的人士為數最多（29 000 人），其次是從事批發及零售業（25 700 人）和飲食及酒店業（23 600 人）的人士（表 8A）；
- (c) 以前從事裝修及保養工程業的人士的失業率為最高（15.8%），其次是從事地基及上蓋工程業的人士（11.5%）（表 8A）；
- (d) 就男性而言，以前從事建造業的人士佔最大比例（佔所有曾工作的失業人士的 22.5%），其次是從事批發、零售、進出口貿易、飲食及酒店業（佔 19.2%）和製造業（佔 10.7%）的人士；女性則以從事批發、零售、進出口貿易、飲食及酒店業（佔 15.0%）和製造業（佔 4.2%）的人士所佔的比例最大（表 8B）；

- (a) 34.2% had a previous job in the wholesale, retail and import/export trades, restaurants and hotels sector (Table 8B);
- (b) the largest group was from the foundation and superstructure industry (29 000), followed by the wholesale and retail trades (25 700) and the restaurants and hotels sector (23 600) (Table 8A);
- (c) the unemployment rate for the decoration and maintenance industry was the highest (15.8%), followed by that for the foundation and superstructure industry (11.5%) (Table 8A);
- (d) for males, the largest proportion was from the construction sector (22.5% of all unemployed persons with a previous job), followed by the wholesale, retail and import/export trades, restaurants and hotels sector (19.2%) and the manufacturing sector (10.7%); for females, the largest proportions were from the wholesale, retail and import/export trades, restaurants and hotels sector (15.0%) and the manufacturing sector (4.2%) (Table 8B);

- (e) 23.2% 的人士以前曾任職工藝及有關人員，21.1% 以前曾任職非技術工人，而18.4% 以前曾任職服務工作及商店銷售人員 (表 8C)；
- (f) 以前曾任職工藝及有關職業的人士的失業率為最高 (11.4%)，其次是以前曾任職服務工作及商店銷售人員的人士 (7.2%) (表 8C)；
- (g) 就男性而言，曾任職工藝及有關人員 (佔所有曾工作的失業人士的 22.3%) 和非技術工人 (佔 17.0%) 的人士所佔的比例最大；而女性則以曾任職文員 (佔 9.1%) 和服務工作及商店銷售人員 (佔 8.5%) 的人士所佔的比例最大 (表 8C)；
- (h) 在十五至二十九歲和三十至四十九歲的年齡組別中，以前從事批發、零售、進出口貿易、飲食及酒店業的人士佔最大比例。而在五十歲及以上的年齡組別中，以前從事建造業的人士佔最大比例 (表 8D)；
- (i) 在十五至二十九歲年齡組別中，以前任職服務工作及商店銷售人員的人士佔最大比例。在三十至四十九歲和五十歲及以上的年齡組別中，則分別以曾任職工藝及有關人員的人士和非技術工人佔最大比例 (表 8E)；
- (j) 77.6% 的人士遭解僱或遣散，17.3% 則因對工作不滿而離職 (表 8F)；
- (k) 遭解僱或遣散及對工作不滿而離職的失業人士均以曾從事批發、零售、進出口貿易、飲食及酒店業的人士所佔的比例最大，分別佔所有曾工作的失業人士的 24.1% 和 7.5% (表 8F)；
- (l) 以前從事製造業人士的持續失業期間中位數為最長 (156 天)，其次是曾從事批發、零售、進出口貿易、飲食及酒店業的失業人士 (99 天) (表 9)。
- (e) 23.2% had previously been working as craft and related workers, 21.1% as workers in elementary occupations, and 18.4% as service workers and shop sales workers (Table 8C);
- (f) the unemployment rate for those who had previously been craft and related workers was the highest (11.4%), followed by those who had previously been service workers and shop sales workers (7.2%) (Table 8C);
- (g) for males, the largest proportions were craft and related workers (22.3% of all unemployed persons with a previous job) and workers in elementary occupations (17.0%); for females, the largest proportions were clerks (9.1%) and service workers and shop sales workers (8.5%) (Table 8C);
- (h) for the age groups 15-29 and 30-49, the largest proportion was from the wholesale, retail and import/export trades, restaurants and hotels sector. For the age group 50 and over, the largest proportion was from the construction sector (Table 8D);
- (i) for the 15-29 age group, the largest proportion was service workers and shop sales workers. For the age groups 30-49 and 50 and over, the largest proportion was craft and related workers and those in elementary occupations respectively (Table 8E);
- (j) 77.6% had been dismissed or laid off while 17.3% had left their jobs because of job dissatisfaction (Table 8F);
- (k) the largest proportions with the modes of leaving last job being dismissed or laid off and dissatisfied with job respectively were both from the wholesale, retail and import/export trades, restaurants and hotels sector, constituting 24.1% and 7.5% of all unemployed persons with a previous job respectively (Table 8F);
- (l) the median duration of unemployment was longest for those from the manufacturing sector (156 days), followed by those from the wholesale, retail and import/export trades, restaurants and hotels sector (99 days) (Table 9).

7. 就業不足人口的特徵

7.1 一九九九年第二季的**就業不足率**估計為 2.9%，而九九年第一季為 3.0%，九八年第二季則為 2.6%。一九九九年第二季的**就業不足率**，相對於九九年第一季的跌幅，從統計觀點而言並不顯著；但相對於九八年第二季的升幅，從統計觀點而言是顯著的（表 11A 和圖 3）。

7.2 一九九九年第二季的**就業不足人數**估計為 99 800 人。在這些**就業不足人士**中：

- (a) 男性有 75 800 人，女性有 24 000 人。男性的**就業不足率**為 3.6%，而女性的**就業不足率**則為 1.7%（表 11A，圖 3 和 4）；
- (b) 在十五至五十九歲的年齡組別中，男性的**就業不足率**均較女性的**就業不足率**為高（表 11A）；
- (c) 60.3% 的人士年齡介乎三十至四十九歲（表 11A）；
- (d) 54.4% 的人士有中學或預科程度，36.9% 有小學程度（表 11B）；
- (e) 就男性而言，具幼稚園教育程度或未受教育的人士的**就業不足率**（8.7%）為最高；女性亦以具幼稚園教育程度或未受教育的人士的**就業不足率**（6.1%）為最高（表 11B）；
- (f) 48.4% 的人士從事建造業，14.0% 從事批發、零售、進出口貿易、飲食及酒店業，而 13.5% 則從事運輸、倉庫及通訊業（表 11D）；
- (g) 從事地基及上蓋工程業的人士為數最多（29 300 人），其次是從事裝修及保養工程業的人士（18 900 人）（表 11C）；
- (h) 從事裝修及保養工程業的人士的**就業不足率**為最高（19.2%），其次是從事地基及上蓋工程業的人士（11.7%）（表 11C）；

7. Characteristics of the Underemployed

7.1 The estimated *underemployment rate* for Q2 1999 was 2.9%, as against 3.0% for Q1 1999 and 2.6% for Q2 1998. The decrease below Q1 1999 is statistically not significant, while the increase over Q2 1998 is statistically significant (Table 11A and Chart 3).

7.2 The estimated number of underemployed persons in Q2 1999 was 99 800. Among those *underemployed*:

- (a) 75 800 were males and 24 000 were females. The underemployment rate was 3.6% for males and 1.7% for females (Table 11A, Charts 3 and 4);
- (b) the underemployment rate for males was higher than that for females for the age group 15-59 (Table 11A);
- (c) 60.3% were aged between 30 and 49 (Table 11A);
- (d) 54.4% had secondary or matriculation education and 36.9% had primary education (Table 11B);
- (e) for males, the underemployment rate was the highest for those who had kindergarten education or no schooling (8.7%); for females, the underemployment rate was also highest for those who had kindergarten education or no schooling (6.1%) (Table 11B);
- (f) 48.4% were in the construction sector, 14.0% in the wholesale, retail and import/export trades, restaurants and hotels sector, and 13.5% in the transport, storage and communications sector (Table 11D);
- (g) the largest group was in the foundation and superstructure industry (29 300), followed by the decoration and maintenance industry (18 900) (Table 11C);
- (h) the underemployment rate for the decoration and maintenance industry was the highest (19.2%), followed by that for the foundation and superstructure industry (11.7%) (Table 11C);

- (i) 就男性而言，從事建造業（佔所有就業不足人士的 47.4%）及運輸、倉庫及通訊業（佔 12.5%）的人士所佔的比例最大；女性則以從事批發、零售、進出口貿易、飲食及酒店業（佔 8.1%）、製造業（佔 6.7%）和社區、社會及個人服務業（佔 6.2%）的人士所佔的比例最大（表 11D）；
- (j) 42.8% 的人士任職工藝及有關人員，而 25.9% 則為非技術工人（表 11E）；
- (k) 工藝及有關人員的就業不足率為最高（10.9%），其次是機台及機器操作員及裝配員（4.5%）和非技術工人（4.0%）（表 11E）；
- (l) 就男性而言，以工藝及有關人員（佔所有就業不足人士的 42.0%）和非技術工人（17.7%）所佔的比例最大；女性則以非技術工人（佔 8.2%）和服務工作及商店銷售人員（佔 5.4%）所佔的比例最大（表 11E）；
- (m) 從事建造業的人士在所有年齡組別中，均佔最大比例（表 11F）；
- (n) 在十五至二十九歲和三十至四十九歲的年齡組別中，以工藝及有關人員佔最大比例。在五十歲及以上的年齡組別中，則以非技術工人佔最大比例（表 11G）；
- (o) 70.0% 的人士在統計前七天內工作少於二十五小時，22.2% 工作三十至三十四小時。工作時數中位數為 24 小時（表 11H）；
- (p) 每月就業收入中位數為 5,000 元（表 11I）。
- (i) for males, the largest proportions were in the construction sector (47.4% of all underemployed persons) and the transport, storage and communications sector (12.5%); for females, the largest proportions were in the wholesale, retail and import/export trades, restaurants and hotels sector (8.1%), the manufacturing sector (6.7%), and the community, social and personal services sector (6.2%) (Table 11D);
- (j) 42.8% were craft and related workers while 25.9% were workers in elementary occupations (Table 11E);
- (k) the underemployment rate for craft and related workers was the highest (10.9%), followed by plant and machine operators and assemblers (4.5%), and workers in elementary occupations (4.0%) (Table 11E);
- (l) for males, the largest proportions were craft and related workers (42.0% of all underemployed persons) and workers in elementary occupations (17.7%); for females, the largest proportions were workers in elementary occupations (8.2%) and service workers and shop sales workers (5.4%) (Table 11E);
- (m) for all age groups, the largest proportion was in the construction sector (Table 11F);
- (n) for the age groups 15-29 and 30-49, the largest proportion was craft and related workers. For the age group 50 and over, the largest proportion was workers in elementary occupations (Table 11G);
- (o) 70.0% worked less than 25 hours and 22.2% worked 30-34 hours during the seven days before enumeration. The median hours of work was 24 (Table 11H);
- (p) the median monthly employment earnings was \$5,000 (Table 11I).

表 1 按性別及年齡劃分的勞動人口
Table 1 Labour force by Sex and Age

性別/年齡組別 Sex / Age group	1998 第二季 Q2		1999 第一季 Q1		1999 第二季 Q2	
	人數 No. (‘000)	比率@ Rate@ (%)	人數 No. (‘000)	比率@ Rate@ (%)	人數 No. (‘000)	比率@ Rate@ (%)
男 Male						
15 - 19	41.3	18.8	42.5	19.3	43.4	19.8
20 - 29	415.5	87.0	414.1	86.9	415.5	87.4
30 - 39	645.1	98.3	643.2	97.9	640.6	97.8
40 - 49	558.6	97.2	584.1	96.9	590.9	96.8
50 - 59	275.6	85.8	292.1	85.5	301.7	87.0
≥ 60	100.7	22.4	102.3	22.0	100.9	21.6
合計 Overall	2 036.8	75.5	2 078.2	75.2	2 093.2	75.5
女 Female						
15 - 19	36.9	17.7	34.0	16.1	32.3	15.4
20 - 29	412.4	79.4	421.4	80.5	417.3	80.1
30 - 39	452.6	65.2	462.4	66.3	471.5	67.4
40 - 49	284.2	52.7	313.4	55.5	320.0	56.0
50 - 59	102.3	38.4	109.7	38.5	118.2	40.8
≥ 60	22.8	4.7	20.5	4.1	22.0	4.4
合計 Overall	1 311.2	48.3	1 361.4	48.9	1 381.4	49.4
合計 Overall						
15 - 19	78.2	18.2	76.5	17.8	75.8	17.6
20 - 29	827.9	83.0	835.5	83.6	832.8	83.6
30 - 39	1 097.8	81.3	1 105.6	81.6	1 112.1	82.1
40 - 49	842.8	75.7	897.5	76.9	910.9	77.1
50 - 59	377.8	64.4	401.8	64.1	420.0	66.0
≥ 60	123.5	13.2	122.8	12.7	123.0	12.7
合計 Overall	3 348.0	61.8	3 439.6	62.0	3 474.5	62.4

註釋：@ 比率是指在某一特定的性別/年齡組別的勞動人口參與率。

Note : @ Labour force participation rate in respect of the specified sex/age group.

表 2 按婚姻狀況及年齡劃分的女性勞動人口
Table 2 Female labour force by Marital status and Age

婚姻狀況/年齡組別 Marital status/Age group	1998 第二季 Q2		1999 第一季 Q1		1999 第二季 Q2	
	人數 No. (‘000)	比率@ Rate@ (%)	人數 No. (‘000)	比率@ Rate@ (%)	人數 No. (‘000)	比率@ Rate@ (%)
從未結婚 Never married						
15 - 19	36.3	17.6	33.4	16.0	31.8	15.2
20 - 29	313.5	84.7	319.8	85.3	313.5	84.8
30 - 39	141.6	96.4	149.3	95.6	148.9	95.4
≥ 40	43.2	73.0	46.4	68.1	49.4	74.7
合計 Overall	534.6	68.3	549.0	67.9	543.6	67.9
曾經結婚# Ever married#						
15 - 19	0.6 *	32.0 *	0.6 *	41.1 *	0.5 *	35.3 *
20 - 29	98.9	66.1	101.6	68.4	103.8	68.5
30 - 39	311.0	56.8	313.0	57.8	322.6	59.3
≥ 40	366.1	29.7	397.2	31.0	410.8	31.7
合計 Overall	776.6	40.2	812.4	41.2	837.7	42.0

註釋 : @ 比率是指在某一特定的婚姻狀況/年齡組別的勞動人口參與率。

包括已婚、同居、喪偶及離婚/分居女士。

* 請參閱第一頁的註釋 (3)。

Notes : @ Labour force participation rate in respect of the specified marital status/age group.

Including those married, cohabited, widowed and divorced/separated.

* Please refer to Note (3) on page 1.

表 3A 按性別及年齡劃分的就業人數
Table 3A Employed persons by Sex and Age

性別/年齡組別 Sex/Age group	1998 第二季 Q2		1999 第一季 Q1		1999 第二季 Q2	
	人數 No. (‘000)	百分比 %	人數 No. (‘000)	百分比 %	人數 No. (‘000)	百分比 %
男 Male						
15 - 19	34.4	1.1	31.9	1.0	31.4	1.0
20 - 29	391.4	12.2	376.6	11.7	375.6	11.5
30 - 39	621.9	19.4	608.0	18.8	608.1	18.6
40 - 49	534.1	16.7	547.3	17.0	556.4	17.1
50 - 59	261.0	8.1	266.7	8.3	276.4	8.5
≥ 60	98.3	3.1	97.2	3.0	97.1	3.0
小計 Sub-total	1 941.0	60.6	1 927.7	59.7	1 944.9	59.6
年齡中位數 Median age	38		39		39	
女 Female						
15 - 19	30.2	0.9	27.0	0.8	23.4	0.7
20 - 29	396.7	12.4	400.6	12.4	394.7	12.1
30 - 39	441.5	13.8	446.6	13.8	456.7	14.0
40 - 49	273.6	8.5	299.6	9.3	308.5	9.5
50 - 59	98.7	3.1	104.9	3.3	113.2	3.5
≥ 60	22.6	0.7	20.0	0.6	21.8	0.7
小計 Sub-total	1 263.2	39.4	1 298.6	40.3	1 318.2	40.4
年齡中位數 Median age	34		34		35	
合計 Overall						
15 - 19	64.6	2.0	58.9	1.8	54.9	1.7
20 - 29	788.0	24.6	777.2	24.1	770.3	23.6
30 - 39	1 063.4	33.2	1 054.5	32.7	1 064.7	32.6
40 - 49	807.7	25.2	846.9	26.3	864.9	26.5
50 - 59	359.7	11.2	371.6	11.5	389.5	11.9
≥ 60	120.8	3.8	117.2	3.6	118.9	3.6
總計 Total	3 204.3	100.0	3 226.3	100.0	3 263.1	100.0
年齡中位數 Median age	36		37		37	

表 3B 按經濟活動身分劃分的就業人數
Table 3B Employed persons by Activity status

經濟活動身分 Activity status	1998 第二季 Q2		1999 第一季 Q1		1999 第二季 Q2	
	人數 No. (‘000)	百分比 %	人數 No. (‘000)	百分比 %	人數 No. (‘000)	百分比 %
僱員 Employees	2 880.4	89.9	2 869.3	88.9	2 894.8	88.7
僱主 Employers	160.8	5.0	172.2	5.3	176.1	5.4
自營作業者 Self-employed	146.3	4.6	165.8	5.1	170.5	5.2
無酬家庭從業員 Unpaid family workers	16.8	0.5	19.0	0.6	21.7	0.7
總計 Total	3 204.3	100.0	3 226.3	100.0	3 263.1	100.0

表 3C 按性別及教育程度劃分的就業人數
Table 3C Employed persons by Sex and Educational attainment

性別/教育程度 Sex/Educational attainment	1998 第二季 Q2		1999 第一季 Q1		1999 第二季 Q2	
	人數 No. (‘000)	百分比 %	人數 No. (‘000)	百分比 %	人數 No. (‘000)	百分比 %
男 Male						
未受教育/幼稚園 No schooling/Kindergarten	30.4	0.9	27.8	0.9	28.1	0.9
小學 Primary	406.0	12.7	365.5	11.3	354.1	10.9
中學/預科 Secondary/Matriculation	1 097.9	34.3	1 119.6	34.7	1 125.3	34.5
專上教育 Tertiary						
- 非學位 non-degree	148.8	4.6	147.8	4.6	159.6	4.9
- 學位 degree	257.9	8.0	266.9	8.3	277.8	8.5
小計 Sub-total	1 941.0	60.6	1 927.7	59.7	1 944.9	59.6

表 3C (續) 按性別及教育程度劃分的就業人數
 Table 3C (Cont'd.) Employed persons by Sex and Educational attainment

性別/教育程度 Sex/Educational attainment	1998 第二季 Q2		1999 第一季 Q1		1999 第二季 Q2	
	人數 No. (‘000)	百分比 %	人數 No. (‘000)	百分比 %	人數 No. (‘000)	百分比 %
女 Female						
未受教育/幼稚園 No schooling/Kindergarten	31.2	1.0	27.7	0.9	28.7	0.9
小學 Primary	184.8	5.8	191.8	5.9	194.3	6.0
中學/預科 Secondary/Matriculation	737.9	23.0	761.4	23.6	759.7	23.3
專上教育 Tertiary						
- 非學位 non-degree	148.0	4.6	142.9	4.4	146.7	4.5
- 學位 degree	161.4	5.0	174.8	5.4	188.8	5.8
小計 Sub-total	1 263.2	39.4	1 298.6	40.3	1 318.2	40.4
合計 Overall						
未受教育/幼稚園 No schooling/Kindergarten	61.6	1.9	55.5	1.7	56.8	1.7
小學 Primary	590.8	18.4	557.3	17.3	548.4	16.8
中學/預科 Secondary/Matriculation	1 835.8	57.3	1 881.0	58.3	1 885.1	57.8
專上教育 Tertiary						
- 非學位 non-degree	296.8	9.3	290.7	9.0	306.3	9.4
- 學位 degree	419.3	13.1	441.8	13.7	466.5	14.3
合計 Overall	3 204.3	100.0	3 226.3	100.0	3 263.1	100.0

表 3D 按行業(詳細組別)劃分的就業人數
Table 3D Employed persons by Industry (Detailed group)

行業 Industry	1998 第二季 Q2		1999 第一季 Q1		1999 第二季 Q2	
	人數 No. (‘000)	百分比 %	人數 No. (‘000)	百分比 %	人數 No. (‘000)	百分比 %
製造業 Manufacturing	<u>395.9</u>	<u>12.4</u>	<u>367.7</u>	<u>11.4</u>	<u>370.2</u>	<u>11.3</u>
食品及飲品製造業 Food and beverage	19.8	0.6	23.0	0.7	21.3	0.7
服裝及鞋類製品業 Clothing and footwear	121.1	3.8	108.9	3.4	109.7	3.4
紙品製造及印刷業 Paper and printing	63.5	2.0	63.6	2.0	62.4	1.9
其他產品製造業 Other manufacturing industries	191.4	6.0	172.3	5.3	176.9	5.4
建造業 Construction	<u>328.9</u>	<u>10.3</u>	<u>305.3</u>	<u>9.5</u>	<u>305.8</u>	<u>9.4</u>
地基及上蓋工程 Foundation and superstructure	237.5	7.4	222.1	6.9	222.6	6.8
裝修及保養工程 Decoration and maintenance	91.3	2.9	83.2	2.6	83.2	2.6
批發、零售、進出口貿易、飲食及酒店業 Wholesale, retail and import/export trades, restaurants and hotels	<u>965.6</u>	<u>30.1</u>	<u>971.9</u>	<u>30.1</u>	<u>955.8</u>	<u>29.3</u>
批發/零售業 Wholesale/retail	341.6	10.7	332.1	10.3	326.3	10.0
進出口貿易業 Import/export trades	375.5	11.7	389.7	12.1	386.3	11.8
飲食/酒店業 Restaurants/hotels	248.4	7.8	250.1	7.8	243.2	7.5
運輸、倉庫及通訊業 Transport, storage and communications	<u>362.9</u>	<u>11.3</u>	<u>365.9</u>	<u>11.3</u>	<u>360.9</u>	<u>11.1</u>
運輸業 Transport	306.8	9.6	310.0	9.6	302.8	9.3
倉庫業 Storage	5.7	0.2	4.2	0.1	6.1	0.2
通訊業 Communications	50.4	1.6	51.7	1.6	52.0	1.6

表 3D (續) 按行業(詳細組別)劃分的就業人數
 Table 3D (Cont'd.) Employed persons by Industry (Detailed group)

行業 Industry	1998 第二季 Q2		1999 第一季 Q1		1999 第二季 Q2	
	人數 No. (‘000)	百分比 %	人數 No. (‘000)	百分比 %	人數 No. (‘000)	百分比 %
金融、保險、地產及商用服務業 Financing, insurance, real estate and business services	<u>414.7</u>	<u>12.9</u>	<u>447.9</u>	<u>13.9</u>	<u>464.1</u>	<u>14.2</u>
金融業 Financing	137.5	4.3	141.1	4.4	139.3	4.3
保險業 Insurance	32.6	1.0	37.9	1.2	43.2	1.3
地產及商用服務業 Real estate and business services	244.6	7.6	268.8	8.3	281.6	8.6
社區、社會及個人服務業 Community, social and personal services	<u>708.7</u>	<u>22.1</u>	<u>739.3</u>	<u>22.9</u>	<u>779.2</u>	<u>23.9</u>
公共行政 Public administration	133.1	4.2	136.1	4.2	150.6	4.6
教育、醫療、其他保健及福利服務業 Education, medical and other health and welfare services	269.5	8.4	275.0	8.5	298.2	9.1
其他服務行業 Other services	306.1	9.6	328.2	10.2	330.4	10.1
其他 Others	<u>27.7</u>	<u>0.9</u>	<u>28.4</u>	<u>0.9</u>	<u>27.1</u>	<u>0.8</u>
總計 Total	3 204.3	100.0	3 226.3	100.0	3 263.1	100.0

表 3E 按性別及行業劃分的就業人數
Table 3E Employed persons by Sex and Industry

性別/行業 Sex / Industry	1998 第二季 Q2		1999 第一季 Q1		1999 第二季 Q2	
	人數 No. (‘000)	百分比 %	人數 No. (‘000)	百分比 %	人數 No. (‘000)	百分比 %
男 Male						
製造業 Manufacturing	253.2	7.9	239.3	7.4	236.9	7.3
建造業 Construction	310.4	9.7	286.7	8.9	284.7	8.7
批發、零售、進出口貿易、 飲食及酒店業 Wholesale, retail and import/export trades, restaurants and hotels	530.5	16.6	523.5	16.2	521.9	16.0
運輸、倉庫及通訊業 Transport, storage and communications	294.7	9.2	298.3	9.2	292.4	9.0
金融、保險、地產及商用服務業 Financing, insurance, real estate and business services	247.3	7.7	268.6	8.3	286.8	8.8
社區、社會及個人服務業 Community, social and personal services	282.8	8.8	287.0	8.9	299.5	9.2
其他 Others	22.2	0.7	24.1	0.7	22.7	0.7
小計 Sub-total	1 941.0	60.6	1 927.7	59.7	1 944.9	59.6

表 3E (續) 按性別及行業劃分的就業人數
Table 3E (Cont'd.) Employed persons by Sex and Industry

性別/行業 Sex / Industry	1998 第二季 Q2		1999 第一季 Q1		1999 第二季 Q2	
	人數 No. (‘000)	百分比 %	人數 No. (‘000)	百分比 %	人數 No. (‘000)	百分比 %
女 Female						
製造業 Manufacturing	142.7	4.5	128.3	4.0	133.4	4.1
建造業 Construction	18.5	0.6	18.6	0.6	21.1	0.6
批發、零售、進出口貿易、 飲食及酒店業 Wholesale, retail and import/export trades, restaurants and hotels	435.1	13.6	448.4	13.9	433.9	13.3
運輸、倉庫及通訊業 Transport, storage and communications	68.2	2.1	67.6	2.1	68.4	2.1
金融、保險、地產及商用服務業 Financing, insurance, real estate and business services	167.4	5.2	179.3	5.6	177.3	5.4
社區、社會及個人服務業 Community, social and personal services	425.9	13.3	452.2	14.0	479.7	14.7
其他 Others	5.5	0.2	4.2	0.1	4.4	0.1
小計 Sub-total	1 263.2	39.4	1 298.6	40.3	1 318.2	40.4

表 3E (續) 按性別及行業劃分的就業人數
Table 3E (Cont'd.) Employed persons by Sex and Industry

性別/行業 Sex / Industry	1998 第二季 Q2		1999 第一季 Q1		1999 第二季 Q2	
	人數 No. (‘000)	百分比 %	人數 No. (‘000)	百分比 %	人數 No. (‘000)	百分比 %
合計 Overall						
製造業 Manufacturing	395.9	12.4	367.7	11.4	370.2	11.3
建造業 Construction	328.9	10.3	305.3	9.5	305.8	9.4
批發、零售、進出口貿易、 飲食及酒店業 Wholesale, retail and import/export trades, restaurants and hotels	965.6	30.1	971.9	30.1	955.8	29.3
運輸、倉庫及通訊業 Transport, storage and communications	362.9	11.3	365.9	11.3	360.9	11.1
金融、保險、地產及商用服務業 Financing, insurance, real estate and business services	414.7	12.9	447.9	13.9	464.1	14.2
社區、社會及個人服務業 Community, social and personal services	708.7	22.1	739.3	22.9	779.2	23.9
其他 Others	27.7	0.9	28.4	0.9	27.1	0.8
總計 Total	3 204.3	100.0	3 226.3	100.0	3 263.1	100.0

表 3F 按性別及職業劃分的就業人數
Table 3F Employed persons by Sex and Occupation

性別/職業 Sex / Occupation	1998 第二季 Q2		1999 第一季 Q1		1999 第二季 Q2	
	人數 No. (‘000)	百分比 %	人數 No. (‘000)	百分比 %	人數 No. (‘000)	百分比 %
男 Male						
經理及行政級人員 Managers and administrators	201.0	6.3	198.5	6.2	204.0	6.3
專業人員 Professionals	117.6	3.7	119.0	3.7	120.5	3.7
輔助專業人員 Associate professionals	304.5	9.5	319.2	9.9	353.2	10.8
文員 Clerks	174.4	5.4	169.8	5.3	162.9	5.0
服務工作及商店銷售人員 Service workers and shop sales workers	272.9	8.5	266.9	8.3	265.2	8.1
工藝及有關人員 Craft and related workers	363.9	11.4	339.2	10.5	332.9	10.2
機台及機器操作員及裝配員 Plant and machine operators and assemblers	237.0	7.4	240.8	7.5	235.4	7.2
非技術工人 Elementary occupations	263.3	8.2	266.1	8.2	265.0	8.1
其他 Others	6.4	0.2	8.1	0.3	5.8	0.2
小計 Sub-total	1 941.0	60.6	1 927.7	59.7	1 944.9	59.6

表 3F (續) 按性別及職業劃分的就業人數
Table 3F (Cont'd.) Employed persons by Sex and Occupation

性別/職業 Sex / Occupation	1998 第二季 Q2		1999 第一季 Q1		1999 第二季 Q2	
	人數 No. (‘000)	百分比 %	人數 No. (‘000)	百分比 %	人數 No. (‘000)	百分比 %
女 Female						
經理及行政級人員 Managers and administrators	52.6	1.6	54.7	1.7	54.2	1.7
專業人員 Professionals	48.5	1.5	51.1	1.6	59.2	1.8
輔助專業人員 Associate professionals	191.2	6.0	203.0	6.3	218.0	6.7
文員 Clerks	416.9	13.0	410.6	12.7	402.3	12.3
服務工作及商店銷售人員 Service workers and shop sales workers	182.3	5.7	200.6	6.2	191.9	5.9
工藝及有關人員 Craft and related workers	11.4	0.4	12.4	0.4	14.4	0.4
機台及機器操作員及裝配員 Plant and machine operators and assemblers	44.7	1.4	39.2	1.2	42.7	1.3
非技術工人 Elementary occupations	312.7	9.8	325.3	10.1	333.7	10.2
其他 Others	3.0	0.1	1.9	0.1	1.9	0.1
小計 Sub-total	1 263.2	39.4	1 298.6	40.3	1 318.2	40.4

表 3F (續) 按性別及職業劃分的就業人數
Table 3F (Cont'd.) Employed persons by Sex and Occupation

性別/職業 Sex / Occupation	1998 第二季 Q2		1999 第一季 Q1		1999 第二季 Q2	
	人數 No. (‘000)	百分比 %	人數 No. (‘000)	百分比 %	人數 No. (‘000)	百分比 %
合計 Overall						
經理及行政級人員 Managers and administrators	253.6	7.9	253.1	7.8	258.2	7.9
專業人員 Professionals	166.0	5.2	170.1	5.3	179.7	5.5
輔助專業人員 Associate professionals	495.8	15.5	522.1	16.2	571.2	17.5
文員 Clerks	591.3	18.5	580.4	18.0	565.2	17.3
服務工作及商店銷售人員 Service workers and shop sales workers	455.2	14.2	467.4	14.5	457.1	14.0
工藝及有關人員 Craft and related workers	375.4	11.7	351.6	10.9	347.4	10.6
機台及機器操作員及裝配員 Plant and machine operators and assemblers	281.6	8.8	280.0	8.7	278.1	8.5
非技術工人 Elementary occupations	576.0	18.0	591.4	18.3	598.6	18.3
其他 Others	9.4	0.3	10.1	0.3	7.7	0.2
總計 Total	3 204.3	100.0	3 226.3	100.0	3 263.1	100.0

表 3G 按行業及年齡劃分的就業人數
Table 3G Employed persons by Industry and Age

行業 Industry	1999 第二季 Q2							
	年齡組別 Age group							
	15 - 29		30 - 49		≥ 50		合計 Overall	
人數 No.	百分比 %	人數 No.	百分比 %	人數 No.	百分比 %	人數 No.	百分比 %	
	(‘000)	(‘000)	(‘000)	(‘000)	(‘000)	(‘000)	(‘000)	
製造業 Manufacturing	72.1	8.7	224.7	11.6	73.5	14.5	370.2	11.3
建造業 Construction	65.7	8.0	192.2	10.0	47.9	9.4	305.8	9.4
批發、零售、進出口貿易、 飲食及酒店業 Wholesale, retail and import/export trades, restaurants and hotels	256.2	31.1	552.7	28.6	146.9	28.9	955.8	29.3
運輸、倉庫及通訊業 Transport, storage and communications	80.7	9.8	224.4	11.6	55.8	11.0	360.9	11.1
金融、保險、地產及商用服務業 Financing, insurance, real estate and business services	135.5	16.4	256.6	13.3	72.0	14.2	464.1	14.2
社區、社會及個人服務業 Community, social and personal services	211.2	25.6	460.8	23.9	107.2	21.1	779.2	23.9
其他 Others	3.8	0.5	18.1	0.9	5.2	1.0	27.1	0.8
總計 Total	825.1	100.0	1 929.6	100.0	508.4	100.0	3 263.1	100.0

表 3H 按職業及年齡劃分的就業人數
Table 3H Employed persons by Occupation and Age

職業 Occupation	1999 第二季 Q2							
	年齡組別 Age group							
	15 - 29		30 - 49		≥ 50		合計 Overall	
人數 No. (‘000)	百分比 %	人數 No. (‘000)	百分比 %	人數 No. (‘000)	百分比 %	人數 No. (‘000)	百分比 %	
經理及行政級人員 Managers and administrators	17.4	2.1	193.9	10.0	46.9	9.2	258.2	7.9
專業人員 Professionals	56.3	6.8	107.7	5.6	15.6	3.1	179.7	5.5
輔助專業人員 Associate professionals	163.5	19.8	353.1	18.3	54.5	10.7	571.2	17.5
文員 Clerks	230.4	27.9	295.3	15.3	39.5	7.8	565.2	17.3
服務工作及商店銷售人員 Service workers and shop sales workers	138.4	16.8	260.7	13.5	58.0	11.4	457.1	14.0
工藝及有關人員 Craft and related workers	82.7	10.0	209.3	10.8	55.4	10.9	347.4	10.6
機台及機器操作員及裝配員 Plant and machine operators and assemblers	28.7	3.5	187.2	9.7	62.2	12.2	278.1	8.5
非技術工人 Elementary occupations	107.3	13.0	317.8	16.5	173.5	34.1	598.6	18.3
其他 Others	0.3 *	# *	4.6	0.2	2.8	0.5	7.7	0.2
總計 Total	825.1	100.0	1 929.6	100.0	508.4	100.0	3 263.1	100.0

註釋：# 少於0.05%。

* 請參閱第一頁的註釋(3)。

Notes：# Less than 0.05%.

* Please refer to Note (3) on page 1.

表 3I 按工作時數劃分的就業人數
Table 3I Employed persons by Hours of work

工作時數 [@] Hours of work [@]	1998 第二季 Q2		1999 第一季 Q1		1999 第二季 Q2	
	人數 No. (‘000)	百分比 %	人數 No. (‘000)	百分比 %	人數 No. (‘000)	百分比 %
< 20	94.4	2.9	184.0	5.7	187.4	5.7
20 - 29	165.8	5.2	131.6	4.1	145.0	4.4
30 - 34	71.3	2.2	91.6	2.8	78.2	2.4
35 - 39	333.8	10.4	336.1	10.4	315.0	9.7
40 - 44	909.3	28.4	833.6	25.8	837.8	25.7
45 - 49	823.1	25.7	760.5	23.6	720.4	22.1
50 - 54	302.3	9.4	323.1	10.0	349.8	10.7
55 - 59	48.4	1.5	59.4	1.8	69.1	2.1
≥ 60	455.9	14.2	506.5	15.7	560.3	17.2
總計 Total	3 204.3	100.0	3 226.3	100.0	3 263.1	100.0
中位數 (時數) Median (Hours)	45		45		45	

註釋：@ 指統計前七天內的工作時數。

Note : @ Referring to hours of work during the seven days before enumeration.

表 3J 按每月就業收入劃分的就業人數
Table 3J Employed persons by Monthly employment earnings

每月就業收入(港元) Monthly employment earnings (HK\$)	1998 第二季 Q2		1999 ⁽¹⁾ 第一季 Q1		1999 第二季 Q2	
	人數 No. (‘000)	百分比 %	人數 No. (‘000)	百分比 %	人數 No. (‘000)	百分比 %
< 3,000	68.5	2.1	87.6	2.7	90.8	2.8
3,000 - 3,999	164.1	5.1	196.9	6.1	197.9	6.1
4,000 - 4,999	87.9	2.7	92.9	2.9	101.0	3.1
5,000 - 5,999	128.2	4.0	138.8	4.3	135.3	4.1
6,000 - 6,999	183.6	5.7	199.0	6.2	207.3	6.4
7,000 - 7,999	224.6	7.0	232.8	7.2	212.0	6.5
8,000 - 8,999	291.3	9.1	286.8	8.9	275.9	8.5
9,000 - 9,999	252.4	7.9	221.2	6.9	195.6	6.0
10,000 - 14,999	815.9	25.5	789.8	24.5	782.4	24.0
15,000 - 19,999	361.1	11.3	341.6	10.6	370.2	11.3
20,000 - 29,999	337.8	10.5	336.7	10.4	362.0	11.1
≥ 30,000	288.8	9.0	302.2	9.4	332.7	10.2
總計 Total	3 204.3	100.0	3 226.3	100.0	3 263.1	100.0
中位數(港元) Median (HK\$)	10,000		10,000		10,000	

註釋：(1) 收入不包括農曆年花紅/雙糧。

Note: (1) Earnings exclude Chinese New Year bonus/double pay.

表 4 按主業所屬行業劃分的就業人士工作時數中位數[@]
**Table 4 Median hours of work[@] of employed persons
 by Industry of main employment**

主業所屬行業 Industry of main employment	1998 第二季 Q2 時數 Hours	1999 第一季 Q1 時數 Hours	1999 第二季 Q2 時數 Hours
製造業 Manufacturing	45	48	45
建造業 Construction	44	44	44
批發、零售、進出口貿易、 飲食及酒店業 Wholesale, retail and import/export trades, restaurants and hotels	48	48	48
運輸、倉庫及通訊業 Transport, storage and communications	48	48	48
金融、保險、地產及商用服務業 Financing, insurance, real estate and business services	44	44	44
社區、社會及個人服務業 Community, social and personal services	45	45	45
其他 Others	44	44	44
合計 Overall	45	45	45

註釋：@ 指統計前七天內的工作時數中位數。

Note : @ Referring to median hours of work during the seven days before enumeration.

表 5A 按主業所屬行業劃分的每月就業收入中位數
Table 5A Median monthly employment earnings
by Industry of main employment

主業所屬行業 Industry of main employment	1998 第二季 Q2 (港元) (HK\$)	1999 ⁽¹⁾ 第一季 Q1 (港元) (HK\$)	1999 第二季 Q2 (港元) (HK\$)
製造業 Manufacturing	10,000	10,000	10,000
建造業 Construction	10,000	10,000	10,000
批發、零售、進出口貿易、 飲食及酒店業 Wholesale, retail and import/export trades, restaurants and hotels	10,000	10,000	10,000
運輸、倉庫及通訊業 Transport, storage and communications	10,000	10,000	10,000
金融、保險、地產及商用服務業 Financing, insurance, real estate and business services	13,000	13,000	13,000
社區、社會及個人服務業 Community, social and personal services	10,000	10,000	10,100
其他 Others	12,000	13,000	13,000
合計 Overall	10,000	10,000	10,000

註釋：(1) 收入不包括農曆年花紅/雙糧。

Note: (1) Earnings exclude Chinese New Year bonus/double pay.

表 5B 按主業所屬職業劃分的每月就業收入中位數
Table 5B Median monthly employment earnings
by Occupation of main employment

主業所屬職業 Occupation of main employment	1998 第二季 Q2 (港元) (HK\$)	1999 ⁽¹⁾ 第一季 Q1 (港元) (HK\$)	1999 第二季 Q2 (港元) (HK\$)
經理及行政級人員 Managers and administrators	30,000	28,000	28,000
專業人員 Professionals	30,000	30,000	30,000
輔助專業人員 Associate professionals	16,000	15,000	15,800
文員 Clerks	10,000	10,000	10,000
服務工作及商店銷售人員 Service workers and shop sales workers	9,500	9,000	9,000
工藝及有關人員 Craft and related workers	10,000	10,000	10,000
機台及機器操作員及裝配員 Plant and machine operators and assemblers	10,000	9,500	10,000
非技術工人 Elementary occupations	6,000	5,900	5,500
其他 Others	5,500	8,000	6,500
合計 Overall	10,000	10,000	10,000

註釋：(1) 收入不包括農曆年花紅/雙糧。

Note: (1) Earnings exclude Chinese New Year bonus/double pay.

表 6 按在統計前七天內工作少於三十五小時的原因劃分的
工作少於三十五小時的就業人數

**Table 6 Employed persons who worked less than 35 hours
by Reason for working less than 35 hours
during the seven days before enumeration**

工作少於三十五小時的原因 Reason for working less than 35 hours	1998 第二季 Q2		1999 第一季 Q1		1999 第二季 Q2	
	人數 No. (‘000)	百分比 %	人數 No. (‘000)	百分比 %	人數 No. (‘000)	百分比 %
休假 On vacation / holiday	161.0	48.6	212.2	52.1	216.3	52.7
開工不足 Slack work	72.5	21.9	80.9	19.9	74.4	18.1
忙於家務、學業、私人事務等 Too busy with housework, schoolwork, personal business, etc.	45.9	13.9	51.3	12.6	47.2	11.5
全職工作每星期工作時數 少於三十五小時 [@] Full-time work less than 35 hours per week [@]	14.5	4.4	14.8	3.6	18.1	4.4
長期患病、傷殘、 年老、半退休 Chronic disease, disablement, old age, partially retired	8.3	2.5	7.9	2.0	8.1	2.0
其他原因 Other reasons	29.2	8.8	39.9	9.8	46.5	11.3
總計 Total	331.5	100.0	407.1	100.0	410.7	100.0

註釋：@ 這類別是指那些被安排在統計前七天內工作少於三十五小時的全職工作人士，及那些任職於每星期標準工作時數少於三十五小時的行業/職業的全職工作人士。

Note : @ This category refers to full-time workers who were scheduled to work less than 35 hours during the seven days before enumeration, and full-time workers who worked in those industries / occupations which had standard hours of work of less than 35 hours per week.

表 7A 按性別及年齡劃分的失業人數
Table 7A Unemployed persons by Sex and Age

性別/年齡組別 Sex/Age group		1998 第二季 Q2		1999 第一季 Q1		1999 第二季 Q2	
		人數 No. (‘000)	比率@ Rate@ (%)	人數 No. (‘000)	比率@ Rate@ (%)	人數 No. (‘000)	比率@ Rate@ (%)
男 Male							
	15 - 19	7.0	16.9	10.6	25.0	12.0	27.7
	20 - 29	24.1	5.8	37.5	9.1	40.0	9.6
	30 - 39	23.2	3.6	35.3	5.5	32.5	5.1
	40 - 49	24.5	4.4	36.8	6.3	34.5	5.8
	50 - 59	14.5	5.3	25.4	8.7	25.4	8.4
	≥ 60	2.4	2.4	5.0	4.9	3.8	3.8
	合計 Overall	95.7	4.7	150.6	7.2	148.3	7.1
女 Female							
	15 - 19	6.7	18.1	7.0	20.5	8.9	27.5
	20 - 29	15.7	3.8	20.8	4.9	22.6	5.4
	30 - 39	11.1	2.5	15.8	3.4	14.9	3.2
	40 - 49	10.7	3.8	13.8	4.4	11.5	3.6
	50 - 59	3.6	3.5	4.8	4.4	5.1	4.3
	≥ 60	0.2 *	1.0 *	0.5 *	2.5 *	0.3 *	1.2 *
	合計 Overall	48.0	3.7	62.8	4.6	63.2	4.6
合計 Overall							
	15 - 19	13.7	17.5	17.6	23.0	20.9	27.6
	20 - 29	39.8	4.8	58.4	7.0	62.5	7.5
	30 - 39	34.3	3.1	51.1	4.6	47.4	4.3
	40 - 49	35.2	4.2	50.6	5.6	46.0	5.1
	50 - 59	18.1	4.8	30.2	7.5	30.5	7.3
	≥ 60	2.7	2.2	5.5	4.5	4.1	3.3
	合計 Overall	143.7	4.3	213.3	6.2	211.4	6.1

註釋：@ 比率是指在某一特定的性別/年齡組別的失業率。

* 請參閱第一頁的註釋 (3)。

Notes：@ Unemployment rate in respect of the specified sex/age group.

* Please refer to Note (3) on page 1.

表 7B 按性別及教育程度劃分的失業人數
Table 7B Unemployed persons by Sex and Educational attainment

性別/教育程度 Sex/Educational attainment	1998 第二季 Q2		1999 第一季 Q1		1999 第二季 Q2	
	人數 No. (‘000)	比率@ Rate@ (%)	人數 No. (‘000)	比率@ Rate@ (%)	人數 No. (‘000)	比率@ Rate@ (%)
男 Male						
未受教育/幼稚園 No schooling/Kindergarten	2.2	6.8	2.4	8.1	3.5	11.0
小學 Primary	25.6	5.9	38.1	9.4	36.7	9.4
中學/預科 Secondary/Matriculation	58.1	5.0	95.2	7.8	92.8	7.6
專上教育 Tertiary						
– 非學位 non-degree	4.9	3.2	6.1	4.0	6.5	3.9
– 學位 degree	4.9	1.9	8.7	3.2	8.8	3.1
合計 Overall	95.7	4.7	150.6	7.2	148.3	7.1
女 Female						
未受教育/幼稚園 No schooling/Kindergarten	1.0 *	3.0 *	1.5	5.0	0.7 *	2.5 *
小學 Primary	7.9	4.1	9.1	4.5	9.1	4.5
中學/預科 Secondary/Matriculation	32.8	4.3	43.4	5.4	42.3	5.3
專上教育 Tertiary						
– 非學位 non-degree	3.9	2.6	3.9	2.6	4.1	2.7
– 學位 degree	2.5	1.5	5.0	2.8	6.9	3.5
合計 Overall	48.0	3.7	62.8	4.6	63.2	4.6

表 7B (續) 按性別及教育程度劃分的失業人數
Table 7B (Cont'd.) Unemployed persons by Sex and Educational attainment

性別/教育程度 Sex/Educational attainment	1998 第二季 Q2		1999 第一季 Q1		1999 第二季 Q2	
	人數 No. (‘000)	比率 [@] Rate [@] (%)	人數 No. (‘000)	比率 [@] Rate [@] (%)	人數 No. (‘000)	比率 [@] Rate [@] (%)
合計 Overall						
未受教育/幼稚園 No schooling/Kindergarten	3.2	4.9	3.9	6.6	4.2	6.9
小學 Primary	33.5	5.4	47.2	7.8	45.8	7.7
中學/預科 Secondary/Matriculation	90.9	4.7	138.6	6.9	135.1	6.7
專上教育 Tertiary						
- 非學位 non-degree	8.8	2.9	10.0	3.3	10.6	3.4
- 學位 degree	7.4	1.7	13.7	3.0	15.7	3.3
合計 Overall	143.7	4.3	213.3	6.2	211.4	6.1

註釋 : @ 比率是指在某一特定的性別/教育程度組別的失業率。

* 請參閱第一頁的註釋 (3)。

Notes : @ Unemployment rate in respect of the specified sex/educational attainment group.

* Please refer to Note (3) on page 1.

表 7C 按持續失業期間劃分的失業人數
 Table 7C Unemployed persons by Duration of unemployment

持續失業期間 (月) Duration of unemployment (Months)	1998 第二季 Q2		1999 第一季 Q1		1999 第二季 Q2	
	人數 No. (‘000)	百分比 %	人數 No. (‘000)	百分比 %	人數 No. (‘000)	百分比 %
< 1	35.2	24.5	33.4	15.6	43.5	20.6
1 - < 2	30.7	21.3	35.3	16.5	32.8	15.5
2 - < 3	26.0	18.1	33.3	15.6	29.7	14.1
3 - < 6	26.9	18.7	46.5	21.8	41.7	19.7
≥ 6	25.0	17.4	64.9	30.4	63.6	30.1
總計 Total	143.7	100.0	213.3	100.0	211.4	100.0
中位數 (日) Median (Days)	68		99		91	

表 8A 按以前從事的行業(詳細組別)劃分的
曾工作的失業人數[@]
Table 8A Unemployed persons with a previous job[@]
by Previous industry (Detailed group)

以前從事的行業 Previous industry	1998 第二季 Q2		1999 第一季 Q1		1999 第二季 Q2	
	人數 No. (‘000)	比率 [#] Rate [#] (%)	人數 No. (‘000)	比率 [#] Rate [#] (%)	人數 No. (‘000)	比率 [#] Rate [#] (%)
製造業 Manufacturing	20.9	5.0	30.0	7.5	28.8	7.2
食品及飲品製造業 Food and beverage	0.6 *	3.1 *	0.8 *	3.2 *	1.3 *	5.7 *
服裝及鞋類製品業 Clothing and footwear	9.1	7.0	10.5	8.8	8.1	6.9
紙品製造及印刷業 Paper and printing	2.5	3.7	4.3	6.3	4.3	6.4
其他產品製造業 Other manufacturing industries	8.8	4.4	14.5	7.8	15.1	7.9
建造業 Construction	27.2	7.6	45.6	13.0	44.6	12.7
地基及上蓋工程 Foundation and superstructure	17.0	6.7	32.2	12.7	29.0	11.5
裝修及保養工程 Decoration and maintenance	10.1	10.0	13.5	13.9	15.6	15.8
批發、零售、進出口貿易、飲食及酒店業 Wholesale, retail and import/export trades, restaurants and hotels	49.8	4.9	67.7	6.5	66.0	6.5
批發/零售業 Wholesale/retail	21.8	6.0	24.2	6.8	25.7	7.3
進出口貿易業 Import/export trades	10.9	2.8	18.7	4.6	16.8	4.2
飲食/酒店業 Restaurants/hotels	17.1	6.5	24.9	9.0	23.6	8.9
運輸、倉庫及通訊業 Transport, storage and communications	12.6	3.4	21.4	5.5	21.3	5.6
運輸業 Transport	11.0	3.5	18.4	5.6	17.4	5.4
倉庫業 Storage	0.1 *	1.4 *	0.5 *	10.3 *	0.8 *	11.0 *
通訊業 Communications	1.5	2.9	2.5	4.6	3.1	5.7

表 8A (續) 按以前從事的行業(詳細組別)劃分的
曾工作的失業人數[@]
Table 8A (Cont'd.) Unemployed persons with a previous job[@]
by Previous industry (Detailed group)

以前從事的行業 Previous industry	1998 第二季 Q2		1999 第一季 Q1		1999 第二季 Q2	
	人數 No. (^{'000})	比率 [#] Rate [#] (%)	人數 No. (^{'000})	比率 [#] Rate [#] (%)	人數 No. (^{'000})	比率 [#] Rate [#] (%)
金融、保險、地產及商用服務業 Financing, insurance, real estate and business services	<u>10.9</u>	<u>2.6</u>	<u>16.0</u>	<u>3.4</u>	<u>15.7</u>	<u>3.3</u>
金融業 Financing	3.2	2.2	3.4	2.3	3.2	2.3
保險業 Insurance	0.2 *	0.5 *	1.5 *	3.8 *	0.8 *	1.9 *
地產及商用服務業 Real estate and business services	7.5	3.0	11.1	4.0	11.6	4.0
社區、社會及個人服務業 Community, social and personal services	<u>11.5</u>	<u>1.6</u>	<u>15.5</u>	<u>2.1</u>	<u>16.4</u>	<u>2.1</u>
公共行政 Public administration	0.8 *	0.6 *	0.6 *	0.5 *	1.0 *	0.7 *
教育、醫療、其他保健及福利服務業 Education, medical and other health and welfare services	3.1	1.1	4.1	1.5	3.5	1.1
其他服務行業 Other services	7.5	2.4	10.8	3.2	11.8	3.5
其他 Others	<u>0.6 *</u>	<u>2.0 *</u>	<u>0.8 *</u>	<u>2.9 *</u>	<u>0.5 *</u>	<u>1.7 *</u>
合計 Overall						
不包括首次求職人士及重新 加入勞動人口的失業人士 Not including first-time job-seekers and re-entrants into the labour force	133.4	-	197.0	-	193.1	-
包括首次求職人士及重新 加入勞動人口的失業人士 Including first-time job-seekers and re-entrants into the labour force	143.7	4.3	213.3	6.2	211.4	6.1

註釋：@ 不包括重新加入勞動人口的失業人士，因為沒有關於他們以前從事行業的資料。

比率是指在某一特定以前從事的行業組別的失業率(例如：在一九九九年第二季，以前從事製造業的人士的失業率為7.2%)。有關計算按以前從事的行業劃分的失業率的技術性詳情，請參閱第三部內「失業率」的定義。

* 請參閱第一頁的註釋(3)。

Notes: @ Not including re-entrants into the labour force for whom information on previous industry is not available.

Unemployment rate in respect of the specified previous industry group (e.g. the unemployment rate for those who had previously been in the manufacturing sector was 7.2% for Q2 1999). For technical details of unemployment rates by previous industry, please see definition of Unemployment Rate in Part III.

* Please refer to Note (3) on page 1.

表 8B 按性別及以前從事的行業劃分的
曾工作的失業人數[@]

Table 8B Unemployed persons with a previous job[@]
by Sex and Previous industry

性別/以前從事的行業 Sex / Previous industry	1998 第二季 Q2		1999 第一季 Q1		1999 第二季 Q2	
	人數 No. (‘000)	百分比 %	人數 No. (‘000)	百分比 %	人數 No. (‘000)	百分比 %
男 Male						
製造業 Manufacturing	13.9	10.4	21.6	11.0	20.6	10.7
建造業 Construction	26.0	19.5	44.1	22.4	43.5	22.5
批發、零售、進出口貿易、 飲食及酒店業 Wholesale, retail and import/export trades, restaurants and hotels	27.3	20.5	38.8	19.7	37.0	19.2
運輸、倉庫及通訊業 Transport, storage and communications	10.7	8.0	18.5	9.4	17.6	9.1
金融、保險、地產及商用服務業 Financing, insurance, real estate and business services	6.5	4.9	9.6	4.9	10.6	5.5
社區、社會及個人服務業 Community, social and personal services	6.5	4.9	9.5	4.8	9.2	4.8
其他 Others	0.6 *	0.4 *	0.7 *	0.3 *	0.4 *	0.2 *
小計 Sub-total	91.6	68.6	142.6	72.4	138.9	71.9

表 8B (續) 按性別及以前從事的行業劃分的
曾工作的失業人數[@]
Table 8B (Cont'd.) Unemployed persons with a previous job[@]
by Sex and Previous industry

性別/以前從事的行業 Sex / Previous industry	1998 第二季 Q2		1999 第一季 Q1		1999 第二季 Q2	
	人數 No. (‘000)	百分比 %	人數 No. (‘000)	百分比 %	人數 No. (‘000)	百分比 %
女 Female						
製造業 Manufacturing	7.1	5.3	8.4	4.3	8.2	4.2
建造業 Construction	1.1 *	0.9 *	1.6	0.8	1.0 *	0.5 *
批發、零售、進出口貿易、 飲食及酒店業 Wholesale, retail and import/export trades, restaurants and hotels	22.5	16.9	28.9	14.7	29.0	15.0
運輸、倉庫及通訊業 Transport, storage and communications	1.9	1.4	2.9	1.5	3.7	1.9
金融、保險、地產及商用服務業 Financing, insurance, real estate and business services	4.3	3.2	6.4	3.3	5.1	2.6
社區、社會及個人服務業 Community, social and personal services	4.9	3.7	6.0	3.1	7.1	3.7
其他 Others	0	0	0.2 *	0.1 *	0.1 *	# *
小計 Sub-total	41.8	31.4	54.4	27.6	54.2	28.1

表 8B (續) 按性別及以前從事的行業劃分的
曾工作的失業人數[@]

Table 8B (Cont'd.) Unemployed persons with a previous job[@]
by Sex and Previous industry

性別/以前從事的行業 Sex / Previous industry	1998 第二季 Q2		1999 第一季 Q1		1999 第二季 Q2	
	人數 No. (‘000)	百分比 %	人數 No. (‘000)	百分比 %	人數 No. (‘000)	百分比 %
合計 Overall						
製造業 Manufacturing	20.9	15.7	30.0	15.2	28.8	14.9
建造業 Construction	27.2	20.4	45.6	23.2	44.6	23.1
批發、零售、進出口貿易、 飲食及酒店業 Wholesale, retail and import/export trades, restaurants and hotels	49.8	37.4	67.7	34.4	66.0	34.2
運輸、倉庫及通訊業 Transport, storage and communications	12.6	9.4	21.4	10.8	21.3	11.0
金融、保險、地產及商用服務業 Financing, insurance, real estate and business services	10.9	8.1	16.0	8.1	15.7	8.1
社區、社會及個人服務業 Community, social and personal services	11.5	8.6	15.5	7.9	16.4	8.5
其他 Others	0.6 *	0.4 *	0.8 *	0.4 *	0.5 *	0.2 *
總計 Total	133.4	100.0	197.0	100.0	193.1	100.0

註釋 : @ 不包括重新加入勞動人口的失業人士，因為沒有關於他們以前從事行業的資料。

少於0.05%。

* 請參閱第一頁的註釋 (3)。

Notes : @ Not including re-entrants into the labour force for whom information on previous industry is not available.

Less than 0.05%.

* Please refer to Note (3) on page 1.

表 8C 按性別及以前從事的職業劃分的
曾工作的失業人數[@]
Table 8C Unemployed persons with a previous job[@]
by Sex and Previous occupation

性別/以前從事的職業 Sex / Previous occupation	1998 第二季 Q2		1999 第一季 Q1		1999 第二季 Q2	
	人數 No. (‘000)	百分比 %	人數 No. (‘000)	百分比 %	人數 No. (‘000)	百分比 %
男 Male						
經理及行政級人員 Managers and administrators	4.1	3.1	5.0	2.5	5.5	2.9
專業人員 Professionals	1.1 *	0.8 *	2.7	1.4	1.5 *	0.8 *
輔助專業人員 Associate professionals	9.1	6.8	14.2	7.2	14.7	7.6
文員 Clerks	7.7	5.8	9.7	4.9	9.4	4.9
服務工作及商店銷售人員 Service workers and shop sales workers	16.0	12.0	21.8	11.0	19.2	9.9
工藝及有關人員 Craft and related workers	24.1	18.1	41.3	20.9	43.0	22.3
機台及機器操作員及裝配員 Plant and machine operators and assemblers	9.8	7.3	17.6	8.9	12.6	6.5
非技術工人 Elementary occupations	19.5	14.6	30.5	15.5	32.8	17.0
其他 Others	0.2 *	0.1 *	0	0	0.2 *	0.1 *
合計 Overall	91.6	68.6	142.6	72.4	138.9	71.9

表 8C (續) 按性別及以前從事的職業劃分的
曾工作的失業人數[@]
Table 8C (Cont'd.) Unemployed persons with a previous job[@]
by Sex and Previous occupation

性別/以前從事的職業 Sex / Previous occupation	1998 第二季 Q2		1999 第一季 Q1		1999 第二季 Q2	
	人數 No. (‘000)	百分比 %	人數 No. (‘000)	百分比 %	人數 No. (‘000)	百分比 %
女 Female						
經理及行政級人員 Managers and administrators	0.6 *	0.5 *	1.2 *	0.6 *	1.0 *	0.5 *
專業人員 Professionals	0.2 *	0.1 *	0.7 *	0.4 *	1.0 *	0.5 *
輔助專業人員 Associate professionals	4.1	3.1	5.8	2.9	5.6	2.9
文員 Clerks	14.1	10.6	18.8	9.5	17.6	9.1
服務工作及商店銷售人員 Service workers and shop sales workers	13.0	9.7	15.7	7.9	16.4	8.5
工藝及有關人員 Craft and related workers	0.7 *	0.5 *	1.4 *	0.7 *	1.7	0.9
機台及機器操作員及裝配員 Plant and machine operators and assemblers	2.7	2.0	3.8	2.0	2.7	1.4
非技術工人 Elementary occupations	6.4	4.8	7.0	3.5	8.0	4.1
其他 Others	0	0	0.1 *	§ *	0.1 *	§ *
合計 Overall	41.8	31.4	54.4	27.6	54.2	28.1

表 8C (續) 按性別及以前從事的職業劃分的
曾工作的失業人數[@]
Table 8C (Cont'd.) Unemployed persons with a previous job[@]
by Sex and Previous occupation

性別/以前從事的職業 Sex / Previous occupation	1998 第二季 Q2			1999 第一季 Q1			1999 第二季 Q2		
	人數 No. (‘000)	百分比 %	比率 [#] Rate [#] (%)	人數 No. (‘000)	百分比 %	比率 [#] Rate [#] (%)	人數 No. (‘000)	百分比 %	比率 [#] Rate [#] (%)
合計 Overall									
經理及行政級人員 Managers and administrators	4.7	3.5	1.8	6.2	3.1	2.4	6.6	3.4	2.5
專業人員 Professionals	1.3 *	1.0 *	0.8 *	3.4	1.7	2.0	2.5	1.3	1.4
輔助專業人員 Associate professionals	13.2	9.9	2.6	20.0	10.1	3.7	20.3	10.5	3.4
文員 Clerks	21.9	16.4	3.6	28.5	14.4	4.7	27.0	14.0	4.6
服務工作及商店銷售人員 Service workers and shop sales workers	29.0	21.8	6.0	37.4	19.0	7.4	35.6	18.4	7.2
工藝及有關人員 Craft and related workers	24.8	18.6	6.2	42.7	21.6	10.8	44.8	23.2	11.4
機台及機器操作員及裝配員 Plant and machine operators and assemblers	12.5	9.4	4.3	21.4	10.9	7.1	15.3	7.9	5.2
非技術工人 Elementary occupations	25.8	19.4	4.3	37.5	19.0	6.0	40.7	21.1	6.4
其他 Others	0.2 *	0.1 *	1.9 *	0.1 *	§ *	0.9 *	0.3 *	0.1 *	3.5 *
合計 Overall									
不包括首次求職人士及重新 加入勞動人口的失業人士 Not including first-time job-seekers and re-entrants into the labour force	133.4	100.0	-	197.0	100.0	-	193.1	100.0	-
包括首次求職人士及重新 加入勞動人口的失業人士 Including first-time job-seekers and re-entrants into the labour force	143.7	-	4.3	213.3	-	6.2	211.4	-	6.1

註釋 : @ 不包括重新加入勞動人口的失業人士，因為沒有關於他們以前從事職業的資料。

比率是指在某一特定以前從事的職業組別的失業率(例如:在一九九九年第二季，以前曾任職輔助專業人員的失業率為3.4%)。有關計算按以前從事的職業劃分的失業率的技术性詳情，請參閱第三部內「失業率」的定義。

§ 少於0.05%。

* 請參閱第一頁的註釋 (3)。

Notes : @ Not including re-entrants into the labour force for whom information on previous occupation is not available.

Unemployment rate in respect of the specified previous occupation group (e.g. the unemployment rate for those who had previously been associate professionals was 3.4% for Q2 1999). For technical details of unemployment rates by previous occupation, please see definition of Unemployment Rate in Part III.

§ Less than 0.05%.

* Please refer to Note (3) on page 1.

表 8D 按以前從事的行業及年齡劃分的
曾工作的失業人數[@]
Table 8D Unemployed persons with a previous job[@]
by Previous industry and Age

以前從事的行業 Previous industry	1999 第二季 Q2							
	年齡組別 Age group							
	15 - 29		30 - 49		≥ 50		合計 Overall	
	人數 No. (‘000)	百分比 %	人數 No. (‘000)	百分比 %	人數 No. (‘000)	百分比 %	人數 No. (‘000)	百分比 %
製造業 Manufacturing	5.8	8.5	15.4	17.0	7.6	22.3	28.8	14.9
建造業 Construction	11.5	16.8	22.0	24.3	11.0	32.4	44.6	23.1
批發、零售、進出口貿易、 飲食及酒店業 Wholesale, retail and import/export trades, restaurants and hotels	30.9	45.2	27.4	30.2	7.7	22.7	66.0	34.2
運輸、倉庫及通訊業 Transport, storage and communications	7.6	11.1	10.8	11.9	2.9	8.5	21.3	11.0
金融、保險、地產及商用服務業 Financing, insurance, real estate and business services	5.8	8.4	7.4	8.2	2.5	7.3	15.7	8.1
社區、社會及個人服務業 Community, social and personal services	6.8	9.9	7.6	8.4	1.9	5.7	16.4	8.5
其他 Others	0.1 *	0.1 *	0	0	0.4 *	1.1 *	0.5 *	0.2 *
總計 Total	68.5	100.0	90.7	100.0	34.0	100.0	193.1	100.0

註釋 : @ 不包括重新加入勞動人口的失業人士，因為沒有關於他們以前從事行業的資料。

* 請參閱第一頁的註釋 (3)。

Notes : @ Not including re-entrants into the labour force for whom information on previous industry is not available.

* Please refer to Note (3) on page 1.

表 8E 按以前從事的職業及年齡劃分的
曾工作的失業人數[@]
Table 8E Unemployed persons with a previous job[@]
by Previous occupation and Age

以前從事的職業 Previous occupation	1999 第二季 Q2							
	年齡組別 Age group							
	15 - 29		30 - 49		≥ 50		合計 Overall	
人數 No. (‘000)	百分比 %	人數 No. (‘000)	百分比 %	人數 No. (‘000)	百分比 %	人數 No. (‘000)	百分比 %	
經理及行政級人員 Managers and administrators	0.5 *	0.7 *	4.4	4.9	1.6 *	4.8 *	6.6	3.4
專業人員 Professionals	1.2 *	1.7 *	1.1 *	1.2 *	0.3 *	0.8 *	2.5	1.3
輔助專業人員 Associate professionals	7.3	10.6	11.4	12.6	1.6	4.8	20.3	10.5
文員 Clerks	13.7	20.0	11.0	12.1	2.3	6.9	27.0	14.0
服務工作及商店銷售人員 Service workers and shop sales workers	18.8	27.5	13.1	14.5	3.7	10.8	35.6	18.4
工藝及有關人員 Craft and related workers	13.3	19.5	22.3	24.6	9.1	26.8	44.8	23.2
機台及機器操作員及裝配員 Plant and machine operators and assemblers	2.7	3.9	8.8	9.7	3.9	11.3	15.3	7.9
非技術工人 Elementary occupations	11.0	16.1	18.5	20.4	11.2	32.8	40.7	21.1
其他 Others	0	0	0	0	0.3 *	0.8 *	0.3 *	0.1 *
總計 Total	68.5	100.0	90.7	100.0	34.0	100.0	193.1	100.0

註釋 : @ 不包括重新加入勞動人口的失業人士，因為沒有關於他們以前從事職業的資料。

* 請參閱第一頁的註釋 (3)。

Notes : @ Not including re-entrants into the labour force for whom information on previous occupation is not available.

* Please refer to Note (3) on page 1.

表 8F 按以前從事的行業及離職方式劃分的
曾工作的失業人數[@]
Table 8F Unemployed persons with a previous job[@]
by Previous industry and Mode of leaving last job

以前從事的行業/離職方式 Previous industry/Mode of leaving last job	1998 第二季 Q2		1999 第一季 Q1		1999 第二季 Q2	
	人數 No. (‘000)	百分比 %	人數 No. (‘000)	百分比 %	人數 No. (‘000)	百分比 %
製造業 Manufacturing						
遭解僱或遣散 Dismissed or laid off	17.6	13.2	26.5	13.5	24.7	12.8
主動離職 Leaving job on own accord						
- 對工作不滿 Dissatisfied with job	2.2	1.6	2.2	1.1	3.1	1.6
- 其他 Others	1.2 *	0.9 *	1.3 *	0.7 *	1.0 *	0.5 *
小計 Sub-total	20.9	15.7	30.0	15.2	28.8	14.9
建造業 Construction						
遭解僱或遣散 Dismissed or laid off	23.7	17.8	43.0	21.8	41.6	21.5
主動離職 Leaving job on own accord						
- 對工作不滿 Dissatisfied with job	1.2 *	0.9 *	1.5 *	0.8 *	1.5	0.8
- 其他 Others	2.2	1.6	1.1 *	0.6 *	1.5 *	0.8 *
小計 Sub-total	27.2	20.4	45.6	23.2	44.6	23.1
批發、零售、進出口貿易、飲食及酒店業 Wholesale, retail and import/export trades, restaurants and hotels						
遭解僱或遣散 Dismissed or laid off	32.1	24.1	53.2	27.0	46.5	24.1
主動離職 Leaving job on own accord						
- 對工作不滿 Dissatisfied with job	12.7	9.5	9.7	4.9	14.5	7.5
- 其他 Others	5.0	3.8	4.8	2.4	5.0	2.6
小計 Sub-total	49.8	37.4	67.7	34.4	66.0	34.2

表 8F (續) 按以前從事的行業及離職方式劃分的
曾工作的失業人數[@]

Table 8F (Cont'd.) Unemployed persons with a previous job[@]
by Previous industry and Mode of leaving last job

以前從事的行業/離職方式 Previous industry/Mode of leaving last job	1998 第二季 Q2		1999 第一季 Q1		1999 第二季 Q2	
	人數 No. (‘000)	百分比 %	人數 No. (‘000)	百分比 %	人數 No. (‘000)	百分比 %
運輸、倉庫及通訊業 Transport, storage and communications						
遭解僱或遣散 Dismissed or laid off	8.5	6.3	17.7	9.0	16.8	8.7
主動離職 Leaving job on own accord						
- 對工作不滿 Dissatisfied with job	2.6	1.9	2.5	1.3	3.4	1.8
- 其他 Others	1.5	1.2	1.2 *	0.6 *	1.1 *	0.5 *
小計 Sub-total	12.6	9.4	21.4	10.8	21.3	11.0
金融、保險、地產及商用服務業 Financing, insurance, real estate and business services						
遭解僱或遣散 Dismissed or laid off	5.9	4.4	9.9	5.0	8.7	4.5
主動離職 Leaving job on own accord						
- 對工作不滿 Dissatisfied with job	4.2	3.2	4.5	2.3	6.2	3.2
- 其他 Others	0.7 *	0.5 *	1.6	0.8	0.8 *	0.4 *
小計 Sub-total	10.9	8.1	16.0	8.1	15.7	8.1
社區、社會及個人服務業 Community, social and personal services						
遭解僱或遣散 Dismissed or laid off	6.1	4.6	11.1	5.7	11.1	5.7
主動離職 Leaving job on own accord						
- 對工作不滿 Dissatisfied with job	3.9	2.9	3.0	1.5	4.6	2.4
- 其他 Others	1.4	1.1	1.4 *	0.7 *	0.7 *	0.3 *
小計 Sub-total	11.5	8.6	15.5	7.9	16.4	8.5

表 8F (續) 按以前從事的行業及離職方式劃分的
曾工作的失業人數[@]
Table 8F (Cont'd.) Unemployed persons with a previous job[@]
by Previous industry and Mode of leaving last job

以前從事的行業/離職方式 Previous industry/Mode of leaving last job	1998 第二季 Q2		1999 第一季 Q1		1999 第二季 Q2	
	人數 No. (‘000)	百分比 %	人數 No. (‘000)	百分比 %	人數 No. (‘000)	百分比 %
其他 Others						
遭解僱或遣散 Dismissed or laid off	0.5 *	0.3 *	0.6 *	0.3 *	0.5 *	0.2 *
主動離職 Leaving job on own accord						
- 對工作不滿 Dissatisfied with job	0.1 *	0.1 *	0	0	0	0
- 其他 Others	0	0	0.3 *	0.1 *	0	0
小計 Sub-total	0.6 *	0.4 *	0.8 *	0.4 *	0.5 *	0.2 *
合計 Overall						
遭解僱或遣散 Dismissed or laid off	94.4	70.8	162.0	82.2	149.8	77.6
主動離職 Leaving job on own accord						
- 對工作不滿 Dissatisfied with job	26.9	20.2	23.5	11.9	33.4	17.3
- 其他 Others	12.1	9.1	11.6	5.9	9.9	5.1
總計 Total	133.4	100.0	197.0	100.0	193.1	100.0

註釋 : @ 不包括重新加入勞動人口的失業人士，因為沒有關於他們以前從事行業的資料。

* 請參閱第一頁的註釋 (3)。

Notes : @ Not including re-entrants into the labour force for whom information on previous industry is not available.

* Please refer to Note (3) on page 1.

表 9 按以前從事的行業劃分的持續失業期間中位數
Table 9 Median duration of unemployment by Previous industry

以前從事的行業 Previous industry	1998 第二季 Q2 日數 Days	1999 第一季 Q1 日數 Days	1999 第二季 Q2 日數 Days
製造業 Manufacturing	101	116	156
建造業 Construction	52	69	76
批發、零售、進出口貿易、飲食及酒店業 Wholesale, retail and import/export trades, restaurants and hotels	68	100	99
運輸、倉庫及通訊業 Transport, storage and communications	72	91	87
金融、保險、地產及商用服務業 Financing, insurance, real estate and business services	66	96	83
社區、社會及個人服務業 Community, social and personal services	72	96	84
合計@ Overall@	68	99	91

註釋：@ 涵蓋所有失業人士，包括首次求職人士及重新加入勞動人口的失業人士。

Note : @ Covering all unemployed persons, including first-time job-seekers and re-entrants into the labour force.

表 10A 按尋找工作的主要方法劃分的求職人數
Table 10A Job-seekers by Main action taken to seek work

尋找工作的主要方法 Main action taken to seek work	1998 第二季 Q2		1999 第一季 Q1		1999 第二季 Q2	
	人數 No. (‘000)	百分比 %	人數 No. (‘000)	百分比 %	人數 No. (‘000)	百分比 %
回應/刊登廣告 Answered/placed advertisement	85.1	62.0	118.4	58.0	115.2	56.5
向親戚/朋友尋求協助 Sought assistance from relatives/friends	39.5	28.8	61.8	30.3	59.0	28.9
其他 Others	12.7	9.3	24.0	11.7	29.9	14.6
總計 Total	137.3	100.0	204.2	100.0	204.0	100.0

表 10B 按期望從事的行業劃分的求職人數
Table 10B Job-seekers by Desired industry of employment

期望從事的行業 Desired industry of employment	1998 第二季 Q2		1999 第一季 Q1		1999 第二季 Q2	
	人數 No. (‘000)	百分比 %	人數 No. (‘000)	百分比 %	人數 No. (‘000)	百分比 %
製造業 Manufacturing	11.6	8.4	15.7	7.7	13.9	6.8
建造業 Construction	23.7	17.3	35.7	17.5	35.6	17.4
批發、零售、進出口貿易、 飲食及酒店業 Wholesale, retail and import/export trades, restaurants and hotels	39.1	28.5	44.0	21.6	41.8	20.5
運輸、倉庫及通訊業 Transport, storage and communications	10.6	7.7	14.1	6.9	10.7	5.2
金融、保險、地產及商用服務業 Financing, insurance, real estate and business services	6.8	5.0	10.6	5.2	10.9	5.4
社區、社會及個人服務業 Community, social and personal services	11.5	8.4	10.7	5.2	11.0	5.4
任何行業/其他 No preference/Others	34.1	24.8	73.3	35.9	80.3	39.3
總計 Total	137.3	100.0	204.2	100.0	204.0	100.0

表 10C 按期望從事的職業劃分的求職人數
Table 10C Job-seekers by Desired occupation of employment

期望從事的職業 Desired occupation of employment	1998 第二季 Q2		1999 第一季 Q1		1999 第二季 Q2	
	人數 No. (‘000)	百分比 %	人數 No. (‘000)	百分比 %	人數 No. (‘000)	百分比 %
經理及行政級人員 Managers and administrators	3.4	2.5	4.8	2.3	4.2	2.1
專業人員 Professionals	2.3	1.7	3.7	1.8	3.3	1.6
輔助專業人員 Associate professionals	12.8	9.3	14.5	7.1	15.7	7.7
文員 Clerks	24.1	17.6	27.5	13.5	26.0	12.7
服務工作及商店銷售人員 Service workers and shop sales workers	24.5	17.8	27.2	13.3	25.8	12.6
工藝及有關人員 Craft and related workers	21.5	15.6	34.1	16.7	33.0	16.2
機台及機器操作員及裝配員 Plant and machine operators and assemblers	9.9	7.2	15.6	7.6	10.7	5.2
非技術工人 Elementary occupations	20.0	14.6	22.2	10.8	23.4	11.4
任何職業/其他 No preference/Others	19.0	13.8	54.6	26.7	62.0	30.4
總計 Total	137.3	100.0	204.2	100.0	204.0	100.0

表 11A 按性別及年齡劃分的就業不足人數
Table 11A Underemployed persons by Sex and Age

性別/年齡組別 Sex/Age group	1998 第二季 Q2		1999 第一季 Q1		1999 第二季 Q2	
	人數 No. (‘000)	比率 [@] Rate [@] (%)	人數 No. (‘000)	比率 [@] Rate [@] (%)	人數 No. (‘000)	比率 [@] Rate [@] (%)
男 Male						
15 - 19	1.8	4.5	2.0	4.8	3.4	7.9
20 - 29	10.3	2.5	13.9	3.3	13.7	3.3
30 - 39	20.4	3.2	23.3	3.6	17.9	2.8
40 - 49	22.6	4.1	27.7	4.7	27.5	4.7
50 - 59	11.1	4.0	11.0	3.8	10.5	3.5
≥ 60	2.6	2.6	2.7	2.6	2.8	2.8
合計 Overall	68.8	3.4	80.6	3.9	75.8	3.6
女 Female						
15 - 19	0.6 *	1.7 *	1.2 *	3.6 *	1.6	5.1
20 - 29	2.3	0.6	3.8	0.9	3.1	0.7
30 - 39	4.5	1.0	4.3	0.9	5.4	1.2
40 - 49	6.3	2.2	9.7	3.1	9.4	2.9
50 - 59	2.5	2.4	4.6	4.2	3.5	3.0
≥ 60	1.1 *	5.0 *	0.3 *	1.2 *	0.9 *	4.0 *
合計 Overall	17.3	1.3	23.8	1.7	24.0	1.7
合計 Overall						
15 - 19	2.5	3.2	3.2	4.2	5.1	6.7
20 - 29	12.5	1.5	17.7	2.1	16.8	2.0
30 - 39	24.8	2.3	27.5	2.5	23.3	2.1
40 - 49	28.9	3.4	37.4	4.2	36.9	4.0
50 - 59	13.6	3.6	15.6	3.9	14.1	3.3
≥ 60	3.8	3.0	2.9	2.4	3.7	3.0
合計 Overall	86.0	2.6	104.4	3.0	99.8	2.9

註釋 : @ 比率是指在某一特定的性別/年齡組別的就業不足率。

* 請參閱第一頁的註釋 (3)。

Notes : @ Underemployment rate in respect of the specified sex/age group.

* Please refer to Note (3) on page 1.

表 11B 按性別及教育程度劃分的就業不足人數
Table 11B Underemployed persons by Sex and Educational attainment

性別/教育程度 Sex/Educational attainment	1998 第二季 Q2		1999 第一季 Q1		1999 第二季 Q2	
	人數 No. (‘000)	比率@ Rate@ (%)	人數 No. (‘000)	比率@ Rate@ (%)	人數 No. (‘000)	比率@ Rate@ (%)
男 Male						
未受教育/幼稚園 No schooling/Kindergarten	2.8	8.5	3.6	11.8	2.8	8.7
小學 Primary	27.0	6.2	29.5	7.3	28.0	7.2
中學/預科 Secondary/Matriculation	37.8	3.3	45.6	3.8	42.7	3.5
專上教育 Tertiary						
- 非學位 non-degree	0.7 *	0.5 *	1.3 *	0.9 *	1.7	1.0
- 學位 degree	0.5 *	0.2 *	0.6 *	0.2 *	0.7 *	0.3 *
合計 Overall	68.8	3.4	80.6	3.9	75.8	3.6
女 Female						
未受教育/幼稚園 No schooling/Kindergarten	0.8 *	2.3 *	1.5	5.0	1.8	6.1
小學 Primary	7.3	3.8	9.5	4.7	8.8	4.3
中學/預科 Secondary/Matriculation	8.3	1.1	11.1	1.4	11.6	1.4
專上教育 Tertiary						
- 非學位 non-degree	0.4 *	0.3 *	0.9 *	0.6 *	1.0 *	0.7 *
- 學位 degree	0.5 *	0.3 *	0.8 *	0.5 *	0.7 *	0.4 *
合計 Overall	17.3	1.3	23.8	1.7	24.0	1.7

表 11B (續) 按性別及教育程度劃分的就業不足人數
 Table 11B (Cont'd.) Underemployed persons by Sex and Educational attainment

性別/教育程度 Sex/Educational attainment	1998 第二季 Q2		1999 第一季 Q1		1999 第二季 Q2	
	人數 No. (‘000)	比率 [@] Rate [@] (%)	人數 No. (‘000)	比率 [@] Rate [@] (%)	人數 No. (‘000)	比率 [@] Rate [@] (%)
合計 Overall						
未受教育/幼稚園 No schooling/Kindergarten	3.5	5.5	5.1	8.5	4.6	7.5
小學 Primary	34.3	5.5	39.0	6.5	36.8	6.2
中學/預科 Secondary/Matriculation	46.1	2.4	56.6	2.8	54.3	2.7
專上教育 Tertiary						
– 非學位 non-degree	1.1 *	0.4 *	2.3	0.7	2.7	0.8
– 學位 degree	1.0 *	0.2 *	1.4 *	0.3 *	1.4 *	0.3 *
合計 Overall	86.0	2.6	104.4	3.0	99.8	2.9

註釋：@ 比率是指在某一特定的性別/教育程度組別的就業不足率。

* 請參閱第一頁的註釋 (3)。

Notes: @ Underemployment rate in respect of the specified sex/educational attainment group.

* Please refer to Note (3) on page 1.

表 11C 按行業(詳細組別)劃分的就業不足人數
Table 11C Underemployed persons by Industry (Detailed group)

行業 Industry	1998 第二季 Q2		1999 第一季 Q1		1999 第二季 Q2	
	人數 No. (‘000)	比率 [@] Rate [@] (%)	人數 No. (‘000)	比率 [@] Rate [@] (%)	人數 No. (‘000)	比率 [@] Rate [@] (%)
製造業 Manufacturing	<u>11.1</u>	<u>2.7</u>	<u>11.1</u>	<u>2.8</u>	<u>11.4</u>	<u>2.8</u>
食品及飲品製造業 Food and beverage	0.1 *	0.4 *	0.2 *	0.8 *	0.5 *	2.4 *
服裝及鞋類製品業 Clothing and footwear	6.5	5.0	6.8	5.7	6.5	5.5
紙品製造及印刷業 Paper and printing	0.9 *	1.4 *	0.6 *	0.9 *	0.8 *	1.2 *
其他產品製造業 Other manufacturing industries	3.6	1.8	3.5	1.9	3.5	1.8
建造業 Construction	<u>44.6</u>	<u>12.5</u>	<u>50.3</u>	<u>14.3</u>	<u>48.3</u>	<u>13.8</u>
地基及上蓋工程 Foundation and superstructure	24.8	9.7	31.5	12.4	29.3	11.7
裝修及保養工程 Decoration and maintenance	19.8	19.5	18.8	19.5	18.9	19.2
批發、零售、進出口貿易、飲食及酒店業 Wholesale, retail and import/export trades, restaurants and hotels	<u>10.7</u>	<u>1.1</u>	<u>13.6</u>	<u>1.3</u>	<u>13.9</u>	<u>1.4</u>
批發/零售業 Wholesale/retail	4.0	1.1	6.0	1.7	5.2	1.5
進出口貿易業 Import/export trades	0.8 *	0.2 *	1.7 *	0.4 *	2.1	0.5
飲食/酒店業 Restaurants/hotels	5.9	2.2	6.0	2.2	6.6	2.5
運輸、倉庫及通訊業 Transport, storage and communications	<u>11.7</u>	<u>3.1</u>	<u>16.9</u>	<u>4.4</u>	<u>13.5</u>	<u>3.5</u>
運輸業 Transport	11.4	3.6	16.0	4.9	12.8	4.0
倉庫業 Storage	0.2 *	3.1 *	0.1 *	2.1 *	0.3 *	4.2 *
通訊業 Communications	0.2 *	0.4 *	0.8 *	1.5 *	0.5 *	0.8 *

表 11C (續) 按行業(詳細組別)劃分的就業不足人數
Table 11C (Cont'd.) Underemployed persons by Industry (Detailed group)

行業 Industry	1998 第二季 Q2		1999 第一季 Q1		1999 第二季 Q2	
	人數 No. (^{'000})	比率 [@] Rate [@] (%)	人數 No. (^{'000})	比率 [@] Rate [@] (%)	人數 No. (^{'000})	比率 [@] Rate [@] (%)
金融、保險、地產及商用服務業 Financing, insurance, real estate and business services	<u>0.9</u> *	<u>0.2</u> *	1.5	<u>0.3</u>	<u>1.5</u>	<u>0.3</u>
金融業 Financing	0.1 *	0.1 *	0.5 *	0.3 *	0.1 *	0.1 *
保險業 Insurance	0	0	0	0	0.1 *	0.2 *
地產及商用服務業 Real estate and business services	0.8 *	0.3 *	1.0 *	0.4 *	1.3 *	0.5 *
社區、社會及個人服務業 Community, social and personal services	<u>7.0</u>	<u>1.0</u>	<u>10.9</u>	<u>1.4</u>	<u>11.0</u>	<u>1.4</u>
公共行政 Public administration	0	0	0.7 *	0.5 *	0.5 *	0.3 *
教育、醫療、其他保健及福利服務業 Education, medical and other health and welfare services	1.5	0.6	2.7	1.0	2.6	0.9
其他服務行業 Other services	5.4	1.7	7.5	2.2	7.9	2.3
其他 Others	<u>0.1</u> *	<u>0.3</u> *	<u>0</u>	<u>0</u>	<u>0.2</u> *	<u>0.8</u> *
合計 Overall	86.0	2.6	104.4	3.0	99.8	2.9

註釋 : @ 比率是指在某一特定的行業組別的就業不足率(例如:在一九九九年第二季,從事製造業的人士的就業不足率為2.8%)。有關計算按行業劃分的就業不足率的技術性詳情,請參閱第三部內「就業不足率」的定義。

* 請參閱第一頁的註釋(3)。

Notes : @ Underemployment rate in respect of the specified industry group (e.g. the underemployment rate for the manufacturing sector was 2.8% for Q2 1999). For technical details of underemployment rates by industry, please see definition of Underemployment Rate in Part III.

* Please refer to Note (3) on page 1.

表 11D 按性別及行業劃分的就業不足人數
Table 11D Underemployed persons by Sex and Industry

性別/行業 Sex/Industry	1998 第二季 Q2		1999 第一季 Q1		1999 第二季 Q2	
	人數 No. (‘000)	百分比 %	人數 No. (‘000)	百分比 %	人數 No. (‘000)	百分比 %
男 Male						
製造業 Manufacturing	4.7	5.4	4.2	4.0	4.7	4.7
建造業 Construction	44.3	51.5	49.5	47.5	47.3	47.4
批發、零售、進出口貿易、 飲食及酒店業 Wholesale, retail and import/export trades, restaurants and hotels	5.2	6.0	6.0	5.7	5.8	5.8
運輸、倉庫及通訊業 Transport, storage and communications	11.0	12.8	15.4	14.8	12.5	12.5
金融、保險、地產及商用服務業 Financing, insurance, real estate and business services	0.5 *	0.6 *	0.7 *	0.6 *	0.6 *	0.6 *
社區、社會及個人服務業 Community, social and personal services	3.1	3.6	4.7	4.5	4.7	4.7
其他 Others	0	0	0	0	0.2 *	0.2 *
小計 Sub-total	68.8	79.9	80.6	77.2	75.8	76.0

表 11D (續) 按性別及行業劃分的就業不足人數
 Table 11D (Cont'd.) Underemployed persons by Sex and Industry

性別/行業 Sex/Industry	1998 第二季 Q2		1999 第一季 Q1		1999 第二季 Q2	
	人數 No. (‘000)	百分比 %	人數 No. (‘000)	百分比 %	人數 No. (‘000)	百分比 %
女 Female						
製造業 Manufacturing	6.4	7.5	6.9	6.6	6.7	6.7
建造業 Construction	0.3 *	0.3 *	0.8 *	0.8 *	1.0 *	1.0 *
批發、零售、進出口貿易、 飲食及酒店業 Wholesale, retail and import/export trades, restaurants and hotels	5.6	6.5	7.7	7.4	8.1	8.1
運輸、倉庫及通訊業 Transport, storage and communications	0.7 *	0.8 *	1.5	1.4	1.0 *	1.0 *
金融、保險、地產及商用服務業 Financing, insurance, real estate and business services	0.4 *	0.4 *	0.8 *	0.8 *	0.9 *	0.9 *
社區、社會及個人服務業 Community, social and personal services	3.9	4.5	6.1	5.9	6.2	6.2
其他 Others	0.1 *	0.1 *	0	0	0	0
小計 Sub-total	17.3	20.1	23.8	22.8	24.0	24.0

表 11D (續) 按性別及行業劃分的就業不足人數
Table 11D (Cont'd.) Underemployed persons by Sex and Industry

性別/行業 Sex/Industry	1998 第二季 Q2		1999 第一季 Q1		1999 第二季 Q2	
	人數 No. (‘000)	百分比 %	人數 No. (‘000)	百分比 %	人數 No. (‘000)	百分比 %
合計 Overall						
製造業 Manufacturing	11.1	12.9	11.1	10.6	11.4	11.4
建造業 Construction	44.6	51.8	50.3	48.2	48.3	48.4
批發、零售、進出口貿易、 飲食及酒店業 Wholesale, retail and import/export trades, restaurants and hotels	10.7	12.5	13.6	13.1	13.9	14.0
運輸、倉庫及通訊業 Transport, storage and communications	11.7	13.6	16.9	16.2	13.5	13.5
金融、保險、地產及商用服務業 Financing, insurance, real estate and business services	0.9 *	1.0 *	1.5	1.4	1.5	1.5
社區、社會及個人服務業 Community, social and personal services	7.0	8.1	10.9	10.4	11.0	11.0
其他 Others	0.1 *	0.1 *	0	0	0.2 *	0.2 *
總計 Total	86.0	100.0	104.4	100.0	99.8	100.0

註釋 : * 請參閱第一頁的註釋(3)。

Note : * Please refer to Note (3) on page 1.

表 11E 按性別及職業劃分的就業不足人數
Table 11E Underemployed persons by Sex and Occupation

性別/職業 Sex/Occupation	1998 第二季 Q2		1999 第一季 Q1		1999 第二季 Q2	
	人數 No. (‘000)	百分比 %	人數 No. (‘000)	百分比 %	人數 No. (‘000)	百分比 %
男 Male						
經理及行政級人員 Managers and administrators	0.1 *	0.1 *	0.2 *	0.2 *	0	0
專業人員 Professionals	0.6 *	0.6 *	0.2 *	0.2 *	0.3 *	0.3 *
輔助專業人員 Associate professionals	1.0 *	1.2 *	1.8	1.7	1.6	1.6
文員 Clerks	0.6 *	0.6 *	1.5	1.4	0.9 *	0.9 *
服務工作及商店銷售人員 Service workers and shop sales workers	4.3	5.0	4.1	3.9	4.3	4.4
工藝及有關人員 Craft and related workers	37.6	43.7	41.1	39.4	41.9	42.0
機台及機器操作員及裝配員 Plant and machine operators and assemblers	7.5	8.7	9.9	9.5	8.9	8.9
非技術工人 Elementary occupations	17.2	19.9	21.8	20.9	17.7	17.7
其他 Others	0	0	0	0	0.2 *	0.2 *
小計 Sub-total	68.8	79.9	80.6	77.2	75.8	76.0

表 11E (續) 按性別及職業劃分的就業不足人數
 Table 11E (Cont'd.) Underemployed persons by Sex and Occupation

性別/職業 Sex/Occupation	1998 第二季 Q2		1999 第一季 Q1		1999 第二季 Q2	
	人數 No.	百分比 %	人數 No.	百分比 %	人數 No.	百分比 %
	('000)		('000)		('000)	
女 Female						
經理及行政級人員 Managers and administrators	0	0	0	0	0	0
專業人員 Professionals	0.2 *	0.2 *	0.1 *	0.1 *	0.3 *	0.3 *
輔助專業人員 Associate professionals	0.4 *	0.5 *	1.2 *	1.1 *	1.5	1.5
文員 Clerks	1.7	2.0	3.1	3.0	3.7	3.7
服務工作及商店銷售人員 Service workers and shop sales workers	3.9	4.5	6.0	5.8	5.4	5.4
工藝及有關人員 Craft and related workers	0.3 *	0.4 *	0.9 *	0.9 *	0.7 *	0.7 *
機台及機器操作員及裝配員 Plant and machine operators and assemblers	4.4	5.2	4.7	4.5	4.3	4.3
非技術工人 Elementary occupations	6.2	7.2	7.8	7.5	8.2	8.2
其他 Others	0.1 *	0.1 *	0	0	0	0
小計 Sub-total	17.3	20.1	23.8	22.8	24.0	24.0

表 11E (續) 按性別及職業劃分的就業不足人數
Table 11E (Cont'd.) Underemployed persons by Sex and Occupation

性別/職業 Sex / Occupation	1998 第二季 Q2			1999 第一季 Q1			1999 第二季 Q2		
	人數 No. (^{'000})	百分比 %	比率 [@] Rate [@] (%)	人數 No. (^{'000})	百分比 %	比率 [@] Rate [@] (%)	人數 No. (^{'000})	百分比 %	比率 [@] Rate [@] (%)
合計 Overall									
經理及行政級人員 Managers and administrators	0.1 *	0.1 *	# *	0.2 *	0.2 *	0.1 *	0	0	0
專業人員 Professionals	0.7 *	0.9 *	0.4 *	0.3 *	0.3 *	0.2 *	0.6 *	0.6 *	0.3 *
輔助專業人員 Associate professionals	1.5	1.7	0.3	2.9	2.8	0.5	3.1	3.1	0.5
文員 Clerks	2.3	2.7	0.4	4.6	4.4	0.8	4.5	4.5	0.8
服務工作及商店銷售人員 Service workers and shop sales workers	8.2	9.5	1.7	10.1	9.7	2.0	9.7	9.7	2.0
工藝及有關人員 Craft and related workers	37.9	44.1	9.5	42.0	40.3	10.7	42.7	42.8	10.9
機台及機器操作員及裝配員 Plant and machine operators and assemblers	11.9	13.9	4.1	14.6	14.0	4.8	13.2	13.2	4.5
非技術工人 Elementary occupations	23.4	27.2	3.9	29.6	28.4	4.7	25.9	25.9	4.0
其他 Others	0.1 *	0.1 *	0.9 *	0	0	0	0.2 *	0.2 *	2.8 *
合計 Overall	86.0	100.0	2.6	104.4	100.0	3.0	99.8	100.0	2.9

註釋：@ 比率是指在某一特定的職業組別的就業不足率(例如：在一九九九年第二季，任職輔助專業人員的就業不足率為0.5%)。有關計算按職業劃分的就業不足率的技術性詳情，請參閱第三部內「就業不足率」的定義。

少於0.05%。

* 請參閱第一頁的註釋(3)。

Notes：@ Underemployment rate in respect of the specified occupation group (e.g. the underemployment rate for associate professionals was 0.5% for Q2 1999). For technical details of underemployment rates by occupation, please see definition of Underemployment Rate in Part III.

Less than 0.05%.

* Please refer to Note (3) on page 1.

表 11F 按行業及年齡劃分的就業不足人數
Table 11F Underemployed persons by Industry and Age

行業 Industry	1999 第二季 Q2							
	年齡組別 Age group							
	15 - 29		30 - 49		≥ 50		合計 Overall	
人數 No. (‘000)	百分比 %	人數 No. (‘000)	百分比 %	人數 No. (‘000)	百分比 %	人數 No. (‘000)	百分比 %	
製造業 Manufacturing	0.9 *	4.0 *	7.2	12.0	3.3	18.5	11.4	11.4
建造業 Construction	9.3	42.3	30.9	51.4	8.1	45.7	48.3	48.4
批發、零售、進出口貿易、 飲食及酒店業 Wholesale, retail and import/export trades, restaurants and hotels	5.2	23.9	6.3	10.4	2.4	13.7	13.9	14.0
運輸、倉庫及通訊業 Transport, storage and communications	2.8	12.6	8.6	14.3	2.2	12.3	13.5	13.5
金融、保險、地產及商用服務業 Financing, insurance, real estate and business services	0.3 *	1.3 *	1.2 *	2.1 *	0	0	1.5	1.5
社區、社會及個人服務業 Community, social and personal services	3.5	16.0	5.7	9.5	1.7	9.8	11.0	11.0
其他 Others	0	0	0.2 *	0.4 *	0	0	0.2 *	0.2 *
總計 Total	21.9	100.0	60.2	100.0	17.7	100.0	99.8	100.0

註釋 : * 請參閱第一頁的註釋 (3)。

Note : * Please refer to Note (3) on page 1.

表 11G 按職業及年齡劃分的就業不足人數
Table 11G Underemployed persons by Occupation and Age

職業 Occupation	1999 第二季 Q2							
	年齡組別 Age group							
	15 - 29		30 - 49		≥ 50		合計 Overall	
人數 No. (‘000)	百分比 %	人數 No. (‘000)	百分比 %	人數 No. (‘000)	百分比 %	人數 No. (‘000)	百分比 %	
經理及行政級人員 Managers and administrators	0	0	0	0	0	0	0	0
專業人員 Professionals	0.4 *	1.7 *	0.2 *	0.3 *	0	0	0.6 *	0.6 *
輔助專業人員 Associate professionals	0.9 *	4.2 *	1.9	3.1	0.3 *	1.7 *	3.1	3.1
文員 Clerks	1.8	8.3	2.4	4.0	0.3 *	1.6 *	4.5	4.5
服務工作及商店銷售人員 Service workers and shop sales workers	4.3	19.7	4.3	7.1	1.1 *	6.4 *	9.7	9.7
工藝及有關人員 Craft and related workers	10.0	45.5	26.7	44.4	6.0	33.8	42.7	42.8
機台及機器操作員及裝配員 Plant and machine operators and assemblers	1.1 *	5.0 *	9.3	15.5	2.8	15.5	13.2	13.2
非技術工人 Elementary occupations	3.4	15.7	15.2	25.2	7.3	40.9	25.9	25.9
其他 Others	0	0	0.2 *	0.4 *	0	0	0.2 *	0.2 *
總計 Total	21.9	100.0	60.2	100.0	17.7	100.0	99.8	100.0

註釋 : * 請參閱第一頁的註釋 (3)。

Note : * Please refer to Note (3) on page 1.

表 11H 按工作時數劃分的就業不足人數
Table 11H Underemployed persons by Hours of work

工作時數 [@] Hours of work [@]	1998 第二季 Q2		1999 第一季 Q1		1999 第二季 Q2	
	人數 No. (‘000)	百分比 %	人數 No. (‘000)	百分比 %	人數 No. (‘000)	百分比 %
< 20	28.0	32.5	39.8	38.1	37.6	37.6
20 - 24	30.1	35.0	33.1	31.7	32.3	32.4
25 - 29	4.1	4.8	6.3	6.0	7.8	7.8
30 - 34	23.9	27.8	25.2	24.2	22.1	22.2
總計 Total	86.0	100.0	104.4	100.0	99.8	100.0
中位數(時數) Median (Hours)	24		24		24	

註釋：@ 指統計前七天內的工作時數。

Note：@ Referring to hours of work during the seven days before enumeration.

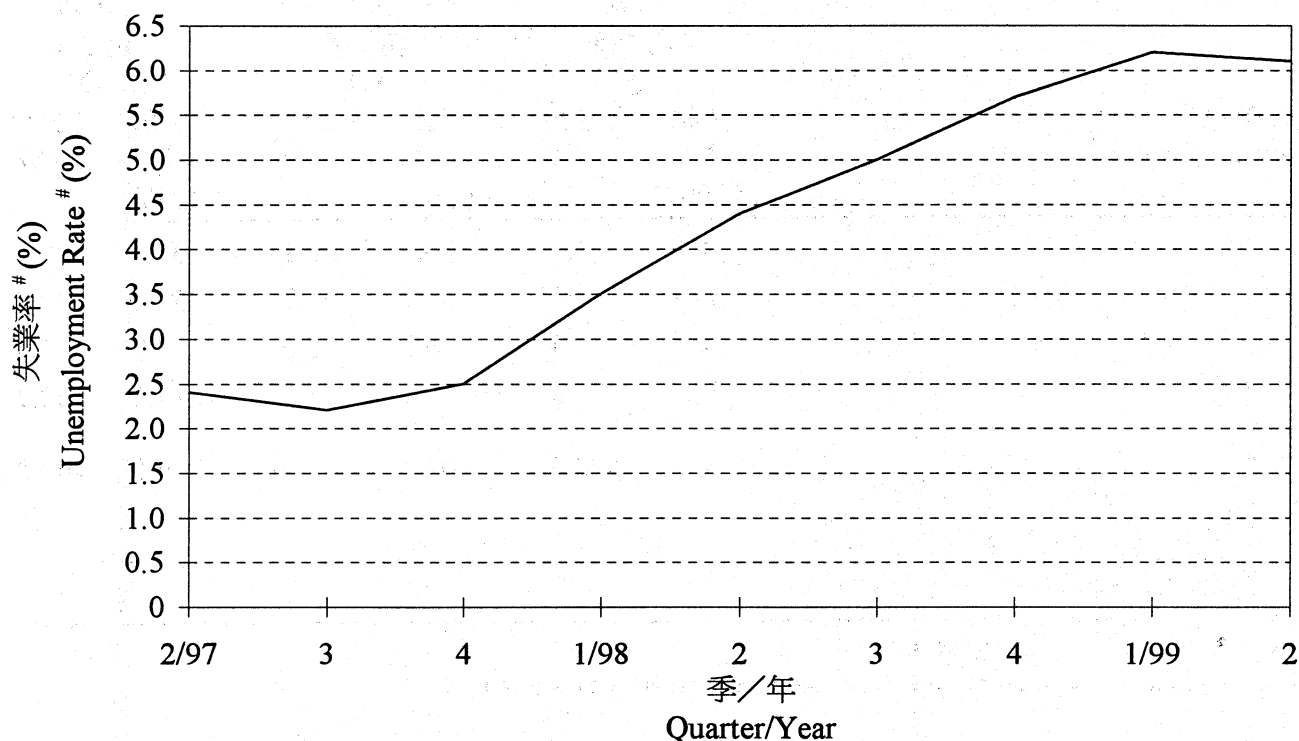
表 11I 按每月就業收入劃分的就業不足人數
Table 11I Underemployed persons by Monthly employment earnings

每月就業收入(港元) Monthly employment earnings (HK\$)	1998 第二季 Q2		1999 ⁽¹⁾ 第一季 Q1		1999 第二季 Q2	
	人數 No. (‘000)	百分比 %	人數 No. (‘000)	百分比 %	人數 No. (‘000)	百分比 %
< 2,000	4.5	5.2	9.2	8.8	9.6	9.6
2,000 - 2,999	7.7	9.0	8.1	7.8	10.4	10.5
3,000 - 3,999	8.5	9.9	14.5	13.9	12.3	12.4
4,000 - 4,999	8.7	10.1	11.1	10.6	11.7	11.7
5,000 - 5,999	10.5	12.2	14.3	13.7	9.4	9.4
6,000 - 6,999	8.9	10.3	10.6	10.2	12.1	12.1
7,000 - 7,999	10.4	12.1	10.1	9.7	8.7	8.7
≥ 8,000	26.8	31.2	26.5	25.3	25.5	25.5
總計 Total	86.0	100.0	104.4	100.0	99.8	100.0
中位數 (港元) Median (HK\$)	6,000		5,000		5,000	

註釋：(1) 收入不包括農曆年花紅/雙糧。

Note：(1) Earnings exclude Chinese New Year bonus/double pay.

圖 1 失業率 (經季節性調整)[#]
 Chart 1 Unemployment Rates (seasonally adjusted)[#]



「失業率(經季節性調整)」是指計算比率時已按首次求職人士佔勞動人口比例的季節性差異作出調整。
 # 'Unemployment rates (seasonally adjusted)' refers to the fact that the unemployment rates have been adjusted for seasonal variations in the proportion of first-time job-seekers in the labour force.

圖 2 失業人數
 Chart 2 Unemployed Persons

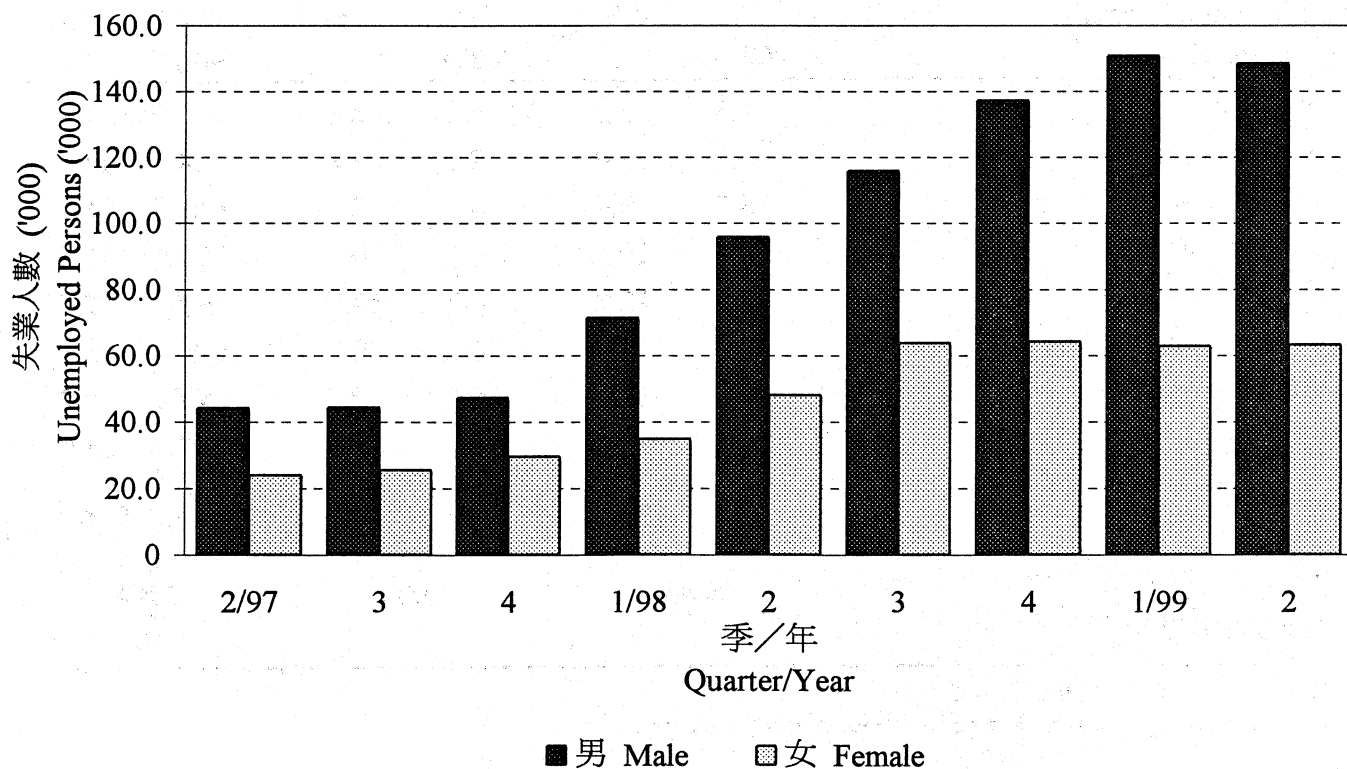


圖 3 就業不足率
Chart 3 Underemployment Rates

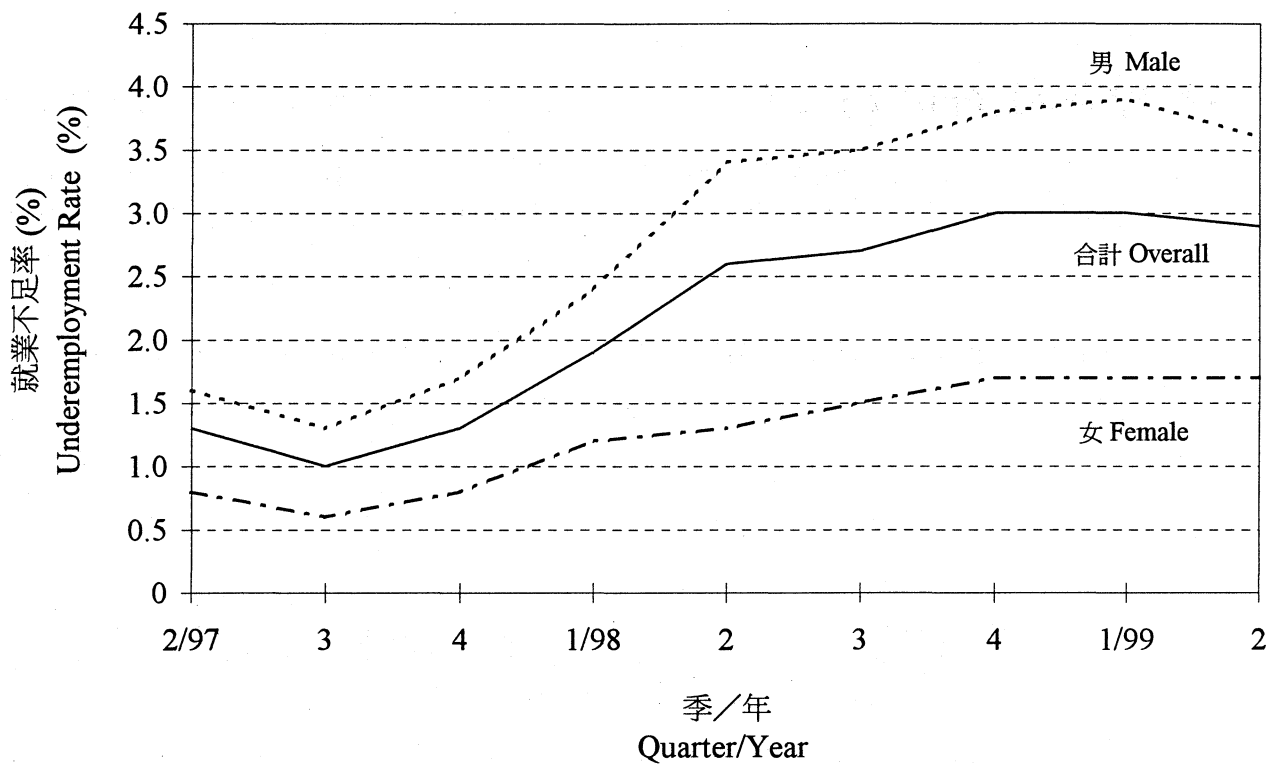
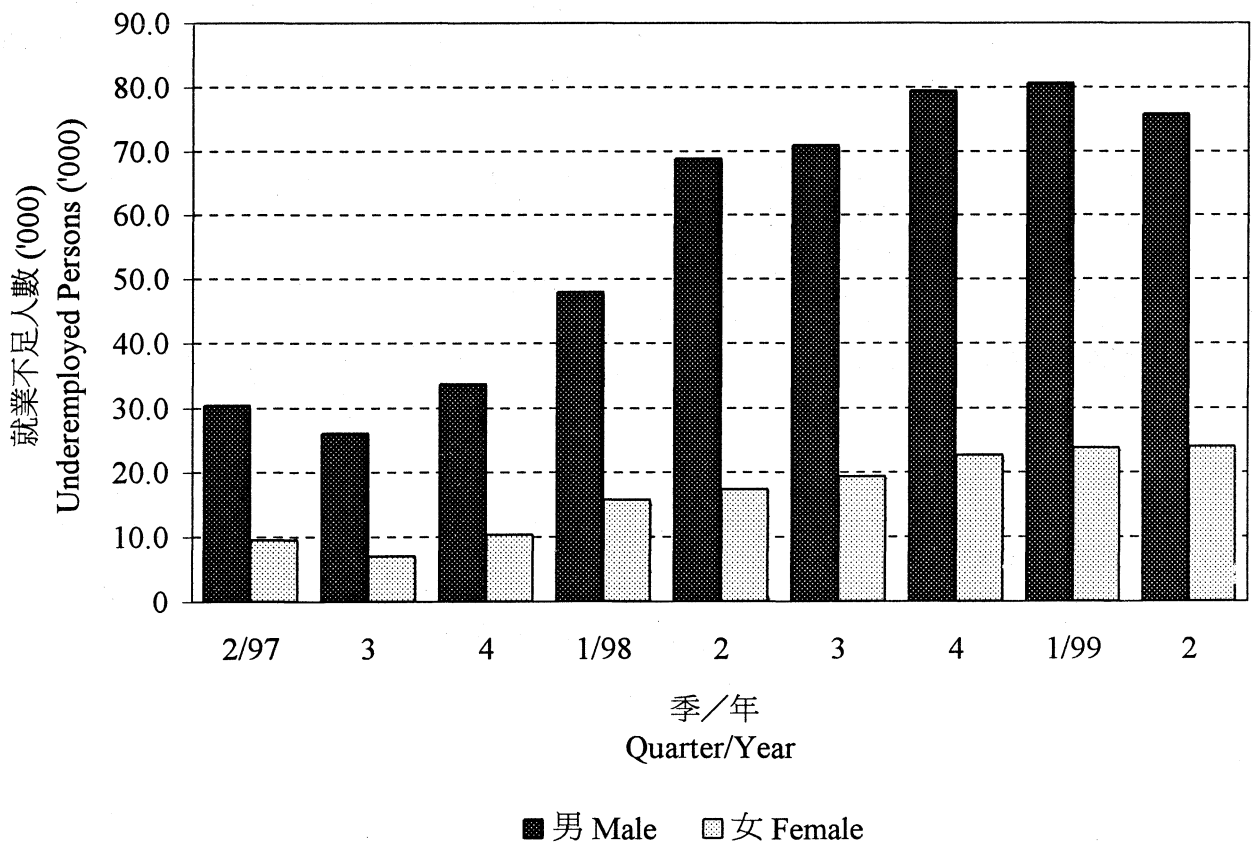


圖 4 就業不足人數
Chart 4 Underemployed Persons



第二部 統計調查方法

PART II SURVEY METHODOLOGY

1. 統計調查的涵蓋範圍及樣本設計

1.1 綜合住戶統計調查是一項持續進行的統計調查，它涵蓋全港陸上非住院人口，因而並不包括：

- a) 入住酒店的旅客及公共機構/社團院舍的住院人士；及
- b) 水上居民。

這項統計調查的涵蓋範圍約佔全港總人口的 98%。

1.2 綜合住戶統計調查的抽樣單位，在已建設地區內是永久性屋宇單位，而在非建設地區內則是小區。

1.3 綜合住戶統計調查採用政府統計處設立的屋宇單位框，作為抽樣框，當中包括兩部分：(i) 屋宇單位檔案庫和 (ii) 小區檔案庫。屋宇單位檔案庫載有在已建設地區內所有永久性屋宇單位地址的電腦化紀錄，包括市區、新市鎮和其他主要發展區。每個屋宇單位均以一個獨有的地址作識別，並詳列街道名稱、大廈名稱、層數和單位號碼。

1.4 小區檔案庫載有在非建設地區內的小區的紀錄，有關紀錄以相對較永久和可辨認的標記（例如小徑和河流）來劃分。每個小區約有 10 個屋宇單位。由於在非建設地區內的屋宇單位未必有明確的地址，以致未能個別識認，故此以小區作為在非建設地區內的抽樣單位的安排是有必要的。

1.5 就綜合住戶統計調查而言，本港境內所有供居住用途及只部分作居住用途的永久性屋宇單位和小區內的屋宇單位，均涵蓋在內。

1. Survey Coverage and Sample Design

1.1 The General Household Survey is conducted on a continuous basis. It covers the land-based non-institutional population of Hong Kong and thus does not cover:

- a) hotel transients and inmates of institutions; and
- b) persons living on board vessels.

The survey thus covers about 98% of the total population of Hong Kong.

1.2 The sampling units for the General Household Survey are permanent quarters in built-up areas and segments in non-built-up areas.

1.3 The General Household Survey makes use of the frame of quarters maintained by the Census and Statistics Department as the sampling frame. The frame consists of two parts: (i) Register of Quarters (RQ) and (ii) Register of Segments (RS). The RQ contains computerized records of all addresses of permanent quarters in built-up areas, including urban areas, new towns and other major developed areas. Each unit of quarters is identified by a unique address with details such as street name, building name, floor number and flat number.

1.4 The RS contains records of segments in non-built-up areas which are delineated by relatively permanent and identifiable landmarks such as footpath and river. There are about 10 quarters in each segment. The use of segments as the sampling unit in non-built-up areas is necessary since the quarters in these areas may not have clear addresses and cannot readily be identified individually.

1.5 For the purpose of the General Household Survey, all permanent quarters and quarters in segments which are for residential and partially residential purposes in the whole territory of Hong Kong are covered.

1.6 綜合住戶統計調查採用「循環式複樣本」設計。按照這個抽樣方式，在當月受訪的樣本中，約有一半樣本單位在三個月前曾經接受訪問。使用重疊樣本，加上循環的特點，不但有助於作不同時間的比較時，對變動上的估計更為準確，而且亦有助對受訪者的負擔作出控制。

1.7 在屋宇單位框內的紀錄，首先會以所屬地區以及屋宇單位類別（小區檔案庫的紀錄只會按地區排序）來分層，然後使用等距複樣本抽樣法，利用不重複的隨機號碼，有系統地按固定間距抽選樣本，組成複樣本（replicate）。

1.8 利用以上所描述的抽樣方法，便可以將屋宇單位框分為大量的複樣本，每個複樣本由約 500 個屋宇單位（包括永久性屋宇單位和小區內的屋宇單位）組成。

1.9 在每月進行的綜合住戶統計調查中，會抽選 18 個複樣本接受訪問，其中九個是來自對上一季的複樣本，其餘九個則是新抽選的複樣本。在被抽中的屋宇單位內，所有有關人士均被問及關於個人、勞動力和住戶特徵的資料。統計調查採用「移動統計時點」或「昨日統計時點」的搜集資料方法。

2. 統計調查問卷

2.1 問卷旨在搜集有關勞動人口特徵的詳細資料。用以計算勞動人口、失業和就業不足數字所採用的概念和定義，基本上遵照國際勞工組織的建議。

1.6 A rotational replicate sample design is adopted in the General Household Survey such that about half of the sampling units in the current month were enumerated three months ago. The overlapping of samples, coupled with the rotational feature, leads to more precise estimation of changes over time on the one hand, and facilitates the control of respondents' burden on the other.

1.7 Records in the frame of quarters are first stratified by geographical area and type of quarters (records in the RS are sorted by geographical area only). Systematic replicated sampling is then applied for sample selection based on which samples are drawn systematically to form replicates according to fixed sampling interval by making use of non-repetitive random numbers.

1.8 By using the sampling method mentioned above, the frame of quarters is divided into a large number of replicates comprising about 500 quarters (including both permanent quarters and quarters in segments) each.

1.9 In the General Household Survey, 18 replicates are selected for enumeration in each month, of which nine are retained from the preceding quarter and nine are newly selected. Information on personal, labour force and household characteristics is collected from all persons in the sampled quarters where appropriate. A 'shifting survey moment' or 'yesterday' approach is applied.

2. Survey Questionnaire

2.1 The questionnaire is designed to collect detailed information on labour force characteristics. The concepts and definitions used to measure labour force, unemployment and underemployment follow closely the recommendations of the International Labour Organization (ILO).

2.2 問卷包括下列資料項目：

住戶資料

1. 屋宇單位類型
2. 單位內的住戶數目
3. 住戶類型
4. 居處類型
5. 居處租住權
6. 住戶每月租金（包括差餉及地租）
7. 在統計夜於住戶內的人數
8. 住戶內的常住人數

個人資料

9. 與戶主關係
10. 在統計夜身處地點
11. 是否常住在該住戶內
12. 年齡
13. 性別
14. 婚姻狀況
15. 教育程度
16. 訪問前七天內的經濟活動身分
17. 上月的非就業收入

就業資料

18. 行業
19. 職業
20. 訪問前七天內的工作時數
21. 上月的就業收入

失業資料

22. 訪問前七天內可否隨時工作
23. 不能隨時工作的原因
24. 訪問前三十天內有否找尋工作
25. 沒有找尋工作的原因
26. 找尋工作所曾採取的行動
27. 持續失業的期間
28. 離開上一份工作的原因
29. 以前從事的職業
30. 以前從事的行業
31. 期望從事的行業
32. 期望從事的職業

2.2 Data items included in the questionnaire are:

Household information

1. Type of quarters
2. Number of households in the quarters
3. Type of household
4. Type of accommodation
5. Tenure of accommodation
6. Monthly household rent (including rates and Government rent)
7. Number of persons in the household on reference night
8. Number of persons usually living in the household

Personal information

9. Relationship to head of household
10. Whereabouts on reference night
11. Whether usually living in the household
12. Age
13. Sex
14. Marital status
15. Educational attainment
16. Activity status during the last 7 days
17. Non-employment income in the last month

Employment information

18. Industry
19. Occupation
20. Number of hours worked during the last 7 days
21. Employment earnings in the last month

Unemployment information

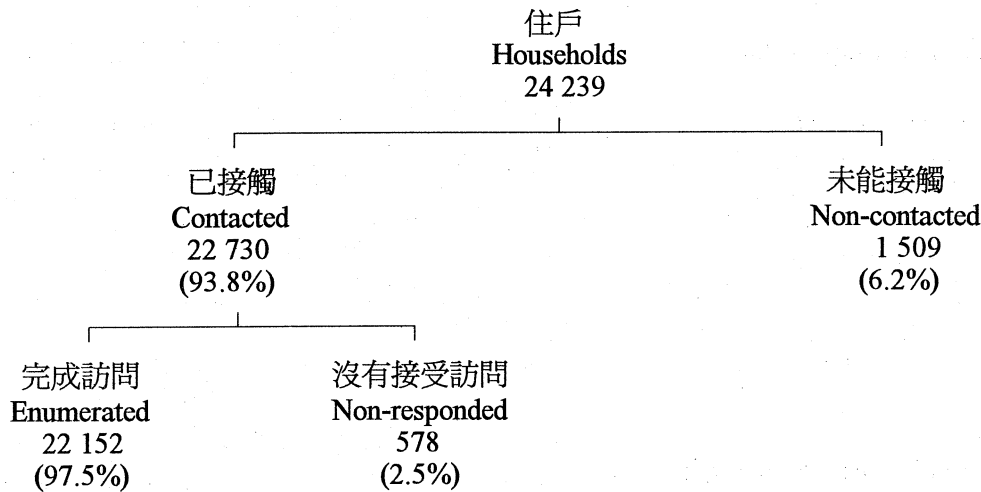
22. Whether available for work during the last 7 days
23. Reason for not available for work
24. Whether seeking work during the last 30 days
25. Reason for not seeking work
26. Action taken to seek work
27. Duration of unemployment
28. Reason for leaving previous job
29. Previous occupation
30. Previous industry
31. Industry intended to work in
32. Occupation intended to work in

就業不足資料

33. 一星期通常的工作時數
34. 訪問前七天內工作少於三十五小時的原因
35. 訪問前七天內可否擔任更多工作
36. 訪問前三十天內有否找尋更多工作
37. 找尋更多工作所曾採取的行動

3. 訪問結果

3.1 於一九九九年第二季的統計調查樣本內，在有人居住的 23 330 個屋宇單位中，共有 24 239 個住戶。統計調查的訪問結果概列如下：



4. 估值的可靠性

4.1 綜合住戶統計調查的結果受抽樣誤差和非抽樣誤差的影響。本報告所載的估價是根據一個特定樣本所得的資料編製。以同樣的抽樣方式，可抽選出許多大小相同的可能樣本，而是項統計調查的樣本為眾多樣本的其中之一。由於每次抽選的樣本都會略有不同，因此不同樣本得出的估價亦互有差異。「抽樣誤差」正是計算這些差異的統計量數，可用以量度從一個特定樣本所得的估價，在估計總體數據方面的精確程度。

4.2 由於本報告所載的估價有抽樣誤差，寫作零的數字，可能是一個小數值的數字，而並非是零。

Underemployment information

33. Number of hours usually worked in a week
34. Reason for working less than 35 hours during the last 7 days
35. Whether available for additional work in the last 7 days
36. Whether seeking additional work during the last 30 days
37. Action taken to seek additional work

3. Enumeration Experience

3.1 In the Q2 1999 round of the survey, a total of 24 239 households were found in the sample of 23 330 occupied quarters. The enumeration experience of the survey is summarized below:

4. Reliability of the Estimates

4.1 Results of the General Household Survey are subject to sampling error and non-sampling error. The estimates contained in this report were based on information obtained from a particular sample, which was one of a large number of possible samples of the same size that could be selected using the same sample design. By chance, estimates derived from different samples would differ from each other. The 'sampling error' is a measure of these variations and is thus a measure of the precision with which an estimate derived from a particular sample would approximate the population parameter to be measured.

4.2 It should be noted that since all estimates contained in this report are subject to sampling error, a zero figure may mean a non-zero figure of a small magnitude.

4.3 本報告在比較各種變數估值的精確程度時，採用了離中系數。離中系數的計算方法，是將標準誤差除以有關估值，再以百分比表示。標準誤差是根據統計原理所訂的公式計算。一般來說，標準誤差與總體內各元素的變異、樣本規模和樣本設計相關。

4.4 在本報告內，離中系數超過 25% 的估值會註上星 (*) 號，顯示該估值須謹慎闡釋。

4.5 主要變數估值的離中系數載列如下：

4.3 For comparing the precision of the estimates of various variables in this report, the *coefficient of variation* (CV) is used. CV is obtained by expressing the *standard error* (SE) as a percentage of the estimate to which it refers. In turn, the SE is computed according to a formula which is established on the basis of statistical theory. Generally speaking, the SE is related to the variability of the elements in the population, the size of the sample and the sample design adopted for the survey.

4.4 In this report, estimates with CV greater than 25% are marked with an asterisk (*). They should be interpreted with particular caution.

4.5 The coefficients of variation of the estimates of the main variables are given below:

變數 <u>Variable</u>	樣本估值 <u>Sample estimate</u>	離中系數 <u>CV</u> (%)
勞動人口 Labour force	3 474 500	0.2
失業人數 Unemployed persons	211 400	3.8
就業不足人數 Underemployed persons	99 800	3.9
勞動人口參與率 Labour force participation rate	62.4%	0.2
失業率 Unemployment rate	6.1%	3.7
就業不足率 Underemployment rate	2.9%	3.9

第三部 詞彙釋義

PART III DEFINITION OF TERMS

經濟活動身分：人口可劃分為從事經濟活動人口（即勞動人口）及非從事經濟活動人口兩大類。（請參閱從事經濟活動人口及非從事經濟活動人口）

年齡：指某人在出生後所度過的完整年數。

從事經濟活動人口，即勞動人口，可再分為就業人口及失業人口。（詳情請參閱勞動人口）

非從事經濟活動人口包括所有在統計前七天內並無職位亦無工作的人士，在這七天內正在休假的人士及失業人士除外。料理家務者、退休人士及所有十五歲以下人士等均包括在內。

教育程度：指某人在學校或其他教育機構達到的最高教育水平，不論他／她已否完成該項課程。計算教育程度時只包括正式課程。正式課程須符合下列準則：

- 1) 最少為期一學年。
- 2) 入學須具備特定的學歷資格（香港公開大學的學位課程除外）。
- 3) 採用考試方式評定學業成績。

行業：指統計前七天內受訪者工作機構的活動類別，分類法是依照「香港標準行業分類（一九九一年）」的主要類別。

Activity status : The population can be divided into two main groups, economically active population (that is the labour force) and economically inactive population. (Please see **economically active population** and **economically inactive population**)

Age refers to the number of complete years a person has passed since his/her birth date.

The **economically active population**, synonymous with the **labour force**, comprises the employed population and the unemployed population. (Please see **Labour force** for details)

The **economically inactive population** is made up of those persons who have not had a job and have not been at work during the seven days before enumeration, excluding persons who have been on leave/holiday during the seven-day period and persons who are unemployed. Persons such as home-makers, retired persons and all those below the age of 15 are thus included.

Educational attainment refers to the highest level of education attained by a person in an educational institution regardless of whether he/she had completed the course. Only formal courses are counted as educational attainment. A formal course must satisfy the following criteria:

- 1) It lasts for at least one academic year.
- 2) It has specific academic qualifications for entrance (except degree courses offered by the Open University of Hong Kong).
- 3) It adopts examinations to assess the academic achievement.

Industry refers to the activity of the establishment in which the respondent worked during the seven days before enumeration. The classification used follows the major divisions of the Hong Kong Standard Industrial Classification (1991).

製造業：包括棉及其他紗線紡織、棉及其他布料的梭織及針織；漂染、印染、整理；衣著用品、針織及其他紡織製成品的製造；地氈、繩索、細繩、食品、飲品、烟草、鞋履、皮革製品、橡膠製品、塑膠製品、木製品、印刷品、紙品、金屬製品、機械、化學品、化學產品、玻璃及陶器的製造。

建造業：包括樓宇建造、土木工程、敷設水管、敷設電線、安裝及維修冷氣系統。

批發、零售、進出口貿易、飲食及酒店業：包括批發及零售業；進出口貿易業；小販；非固定行業的經紀；其他商業代理人；酒樓；咖啡室；酒店及旅舍。

運輸、倉庫及通訊業：包括陸路運輸、海上運輸及空運業；運輸業的附帶服務；貨棧及倉庫；郵政及電訊業。

金融、保險、地產及商用服務業：包括金融；保險；地產；律師、會計師、核數師、建築師、測量師及廣告公司的辦事處及資料處理服務。

社區、社會及個人服務業：包括政府服務；教育服務；醫療、牙科及其他保健服務；衛生服務；福利機構；宗教團體；電影院及劇院；電台及電視台；圖書館及博物館；電器修理店；車輛維修店以及其他家庭及個人服務。

其他：包括「農業及漁業」、「採礦及採石業」、「電力、燃氣及水務業」等行業，及報稱的行業不能分類或描述不足。

Manufacturing - including spinning of cotton and other yarn, weaving and knitting of cotton and other fabrics; bleaching, dyeing, finishing; manufacturing of wearing apparel, knitwear and other made-up textile goods; and manufacturing of carpets, cordages, ropes and twines, food, beverage, tobacco, footwear, leather products, rubber products, plastic products, wood products, printed matters and paper products, metal products, machinery, chemicals, chemical products, glass and pottery.

Construction - including building construction, civil engineering, plumbing, electrical wiring, air-conditioning installation and repair.

Wholesale, retail and import/export trades, restaurants and hotels - including wholesale and retail trades; import and export trades; peddlers; Chinese general brokers; other commercial agents; restaurants; cafes; hotels and boarding houses.

Transport, storage and communications - including land transport, water transport and air transport; services allied to transport; storage and warehousing; and post and telecommunications.

Financing, insurance, real estate and business services - including financing; insurance; real estate; offices of lawyers, accountants, auditors, architects, surveyors and advertising agents and data processing services.

Community, social and personal services - including government services; educational service; medical, dental and other health services; sanitary services; welfare institutions; religious organizations; cinemas and theatres; radio and television broadcasting; libraries and museums; electrical repair shops; automobile repair garages and other household and personal services.

Others - including such industries as 'Agriculture and fishing'; 'Mining and quarrying'; 'Electricity, gas and water' and industrial activities inadequately described or unclassifiable.

勞動人口：指十五歲及以上陸上非住院人口，並符合下列就業人口或失業人口定義的人士。入住酒店的旅客和公共機構／社團院舍的住院人士及水上居民並不包括在內。

就業人口：

- 1) 由所有就業人士構成。一名十五歲或以上人士如符合下列情況，可界定為就業人士：
 - a) 統計前七天內從事一些工作賺取薪酬或利潤；*或*
 - b) 有一份正式工作（即該人士持續支取工資或薪金；*或*已獲保證或已有既定日期返回工作崗位或所經營之業務；*或*正支取補償費而無須接受其他工作）。
- 2) 就業人士可分為：

*自營業者：*從事本身業務／職業時為賺取利潤或費用而工作，並沒有僱用他人或受僱於人。

*僱主：*從事本身業務／職業時為賺取利潤或費用而工作，最少僱用一人為其工作。

*僱員：*為賺取工資、薪金、佣金、小費或實物津貼而為僱主（私營公司或政府）工作。外發工、家庭傭工和支薪家庭從業員亦包括在內。
- 3) 為有關家屬生意工作而並無收取報酬的無酬家庭從業員，應視作就業人士。報酬不包括膳宿和零用錢，但若他們因工作而定時支取報酬，應視為僱員。

Labour force refers to the land-based non-institutional population aged 15 and over who satisfy the criteria for inclusion in the employed population or the unemployed population as defined below. Hotel transients, inmates of institutions and persons living on board vessels are excluded.

The employed population

- 1) This comprises all employed persons. For a person aged 15 or over to be classified as employed, that person should:
 - a) be engaged in performing work for pay or profit during the seven days before enumeration; *or*
 - b) have formal job attachment (i.e. that the person has continued receipt of wage or salary; *or* has an assurance or an agreed date of return to job or business; *or* is in receipt of compensation without obligation to accept another job).
- 2) Employed persons can be categorized into:

Self-employed: A person who works for profit or fees in his/her own business/profession, neither employed by someone nor employing others.

Employer: A person who works for profit or fees in his/her own business/profession and employs one or more persons to work for him/her.

Employee: A person who works for an employer (private companies or government) for wage, salary, commission, tips, or payment in kind. This also includes outworker, domestic helper and paid family worker.
- 3) Unpaid family workers who work for no pay in a family business are considered as employed. Food and lodging and pocket money are not counted as pay. However, if the workers receive regular pay for the work performed, they should be considered as employees.

- 4) 支取現金報酬或實物津貼的學徒，應視作就業人士。
- 5) 沒有按所做工作支取現金報酬或實物津貼的志願工作者，而本身並無從事一份工作或企業，不應視作就業人士。

就業不足人口：

- 1) 在就業人口內，可分出一群就業不足人士作進一步分析。
- 2) 界定一個就業人士為就業不足人士的準則如下：

在統計前七天內在*非自願*情況下工作少於三十五小時，及符合下列其中一種情況：

- a) 在統計前七天內可擔任更多工作；或
 - b) 在統計前三十天內有找尋更多工作。
- 3) 因工作量不足、原料短缺、機械故障或不能找到全職工作，以致只能工作短時數的人士，可視作*非自願*情況下將工作時數縮短。

失業人口：

- 1) 由所有失業人士構成。一名十五歲或以上人士如符合下列情況，便界定為失業人士：
 - a) 在統計前七天內並無職位，且並無為賺取薪酬或利潤而工作；及
 - b) 在統計前七天內隨時可工作；及
 - c) 在統計前三十天內有找尋工作。

另外，一名十五歲或以上的人士，如果他/她符合上述(a)和(b)的條件，但由於相信沒有工作可做而在統計前三十天內沒有找尋工作，亦會被界定為失業，即所謂「因灰心而不求職的人士」。

- 4) Apprentices who receive payment in cash or in kind are considered as employed.
- 5) Volunteer workers who perform some work not for any payment in cash or in kind, and who do not have a job or an enterprise are not considered as employed.

The underemployed population

- 1) Within the employed population, a group of underemployed persons can be differentiated for further analysis.
- 2) The criteria for an employed person to be classified as underemployed are:

involuntarily working less than 35 hours during the seven days before enumeration; *and* either

- a) has been available for additional work during the seven days before enumeration; *or*
 - b) has sought additional work during the thirty days before enumeration.
- 3) Working short hours is considered as *involuntary* if it is due to slack work, material shortage, mechanical breakdown and inability to find a full-time job.

The unemployed population

- 1) This comprises all unemployed persons. For a person aged 15 or over to be classified as unemployed, that person should:
 - a) not have had a job and should not have performed any work for pay or profit during the seven days before enumeration; *and*
 - b) have been available for work during the seven days before enumeration; *and*
 - c) have sought work during the thirty days before enumeration.

Besides, if a person aged 15 or over fulfils the conditions (a) and (b) above but has not sought work during the thirty days before enumeration because he/she believed that work was not available, he/she is still classified as unemployed, being regarded as a so-called 'discouraged worker'.

2) 除上述情況外，下列人士亦視作失業人士：

- a) 並無職位，有找尋工作，但由於暫時生病而不能工作的人士；及
- b) 並無職位，且隨時可工作，但由於下列原因並無找尋工作的人士：
 - i) 已為於稍後時間擔當的新工作或開展的業務作出安排；或
 - ii) 正期待返回原來的工作崗位（例如散工在有需要時通常會獲通知開工）。

勞動人口參與率：指勞動人口佔所有十五歲及以上陸上非住院人口的比例。

每月就業收入：指上月從所有工作所獲得的收入。就僱員來說，收入包括工資和薪金、花紅、佣金、房屋津貼、逾時工作津貼及勤工津貼，但不包括補薪。就僱主和自營作業人士而言，收入是指從業務所得的淨收入或從企業提取作個人及家居用途的款額。

職業：指在統計前七天內某人所從事的主要工作種類、性質及主要職務。分類基本上是按照「國際標準職業分類（一九八八年）」或簡稱 ISCO-88 的主要組別，並因應本港情況作出修訂。

經理及行政級人員：包括政府的行政人員、專員及署／處長、領事、議員；工商界、進出口貿易、批發和零售業、飲食及旅店業、運輸、電力、燃氣、水務及其他服務、以及漁農業中的董事、執行總監、總裁、總經理、專職經理、分行經理及小型機構經理。

2) Notwithstanding the above, the following types of persons are also considered as unemployed:

- a) persons without a job, have sought work but have not been available for work because of temporary sickness; *and*
- b) persons without a job, have been available for work but have not sought work because they:
 - i) have made arrangements to take up a new job or to start business at a subsequent date; *or*
 - ii) were expecting to return to their original jobs (e.g. casual workers are usually called back to work when service is needed).

Labour force participation rate refers to the proportion of labour force in the total land-based non-institutional population aged 15 and over.

Monthly employment earnings refer to earnings from all jobs during the last month. For employees, they include wage and salary, bonus, commission, housing allowance, overtime allowance and attendance allowance. However, back pays are excluded. For employers and self-employed, they refer to net earnings from business or amounts drawn from the enterprise for personal and household use.

Occupation refers to the kind of work, nature of duties and main task performed by a person in his/her main job during the seven days before enumeration. The classification used basically follows the major groups of the International Standard Classification of Occupations (1988) or ISCO-88 for abbreviation, with local adaptation for Hong Kong.

Managers and administrators - including administrators, commissioners and directors in government service; consuls; councillors; directors, chief executive officers, presidents, general managers, functional managers, branch managers and small business managers in industry, commerce, import and export trades, wholesale and retail trades, catering and lodging services, transport, electricity, gas, water and other services and agricultural and fishery sectors.

專業人員：包括合資格的專業科學家、醫生、牙醫及其他醫療專業人員；建築師、測量師及工程師；大學及專上學院的校長、院長、教職員及行政人員；中學校長及教師；統計師、數學家、電腦系統分析員及程序編寫員；律師及法官；會計師；商界顧問及分析員；社會工作者；翻譯員及傳譯員；新聞編輯及新聞記者；作家；圖書館管理員及宗教活動專業人員。

輔助專業人員：包括科學技術員、護士及助產士、牙科助理及其他保健輔助專業人員；建築、測量及工程技術員；光學及電子儀器控制員；船隻領航員及空中交通指揮員；小學及幼稚園/幼兒院校長及教師；統計助理；電腦操作員；法律文員；會計督導員；公共關係主任；營業代表；設計師；屋邨經理；社會工作助理；警隊及其他紀律部隊的警司、督察及主任；藝人及運動員。

文員：包括速記員、秘書及打字員；簿記、金融、船務、存案及人事部文員；出納員及銀行櫃位員；接待員及查詢文員。

服務工作及商店銷售人員：包括空中小姐及導遊；管家；廚師及侍應生；保姆；理髮師及美容師；警隊及其他紀律部隊的員佐級人員；運輸指導員及其他服務工作人員；批發及零售商店推銷員；店員及時裝模特兒。

工藝及有關人員：包括礦工及採石工人；砌磚工人、木匠及其他建造業工人；金屬模工；鐵匠；機械、電器及電子儀器技工；珠寶工人及手錶製造工人；製陶工人；排字工人；麵包師傅、食品及飲品處理工人；油漆工人；紡織、成衣、皮革、橡膠和塑膠行業的工人及其他工藝工人。

Professionals - including qualified professional scientists, doctors, dentists and other medical professionals; architects, surveyors and engineers; vice-chancellors, directors, academic staff and administrators of university and post-secondary college; principals and teachers of secondary school; statisticians; mathematicians; system analysts and computer programmers; lawyers and judges; accountants; business consultants and analysts; social workers; translators and interpreters; news editors and journalists; writers; librarians and members of religious orders.

Associate professionals - including science technicians, nurses and midwives, dental assistants and other health associate professionals; architectural, surveying and engineering technicians; optical and electronic equipment controllers; ship pilots and air traffic controllers; principals and teachers of primary school and kindergarten/nursery; statistical assistants; computer operators; law clerks; accounting supervisors; public relation officers; sales representatives; designers; estate managers; social work assistants; superintendents, inspectors and officers of the police and other discipline services; performers and sportsmen.

Clerks - including stenographers, secretaries and typists; bookkeeping, finance, shipping, filing and personnel clerks; cashiers and tellers; receptionists and information clerks.

Service workers and shop sales workers - including air hostesses and travel guides; house stewards; cooks and waiters; baby-sitters; hairdressers and beauticians; rank and file of the police and other discipline services; transport conductors and other service workers; wholesale and retail salesmen in shops; shop assistants and fashion models.

Craft and related workers - including miners and quarrymen; bricklayers, carpenters and other construction workers; metal moulders; blacksmiths; machinery, electric and electronic instrument mechanics; jewellery workers and watch makers; potters; typesetters; bakers, food and beverage processors; painters; craft workers in textile, garment, leather, rubber and plastic trades and other craft workers.

機台及機器操作員及裝配員：包括鑽井工人及鏗床操作員；礦熔爐操作員；磚及磁磚燒窯工人；鋸木廠鋸工；造紙工人；化學處理機台操作員；發電廠及鍋爐操作員；石棉水泥產品製造工人；金屬整理工人及電鍍工人；牛奶製品及其他食品處理機器操作員；印刷機操作員；生產紡織、橡膠及塑膠製品的機器操作員；裝配員；司機；海員及其他工廠及機器操作員。

非技術工人：包括小販；家務助理及清潔工人；信差；私人護衛員；看更；貨運工人；電梯操作員；建造業雜工；包裝工人；漁農業雜工。

其他：包括農夫、畜牧業工人及漁夫、及報稱的職業不能分類或描述不足。

就業不足人口（請參閱**勞動人口**內的**就業不足人口**）

就業不足率：指就業不足人士在勞動人口中所佔的比例。有關按行業或職業劃分的就業不足率，由於在計算用作分母的按行業或職業劃分的勞動人口時，(i) 失業人士是按其**以前**從事的行業(或職業)劃分，因而未必能確實反映他們將從事工作的行業(或職業)，而且(ii) 亦沒有首次求職人士和重新加入勞動人口的失業人士所屬行業(或職業)的資料。因此，按行業或職業劃分的就業不足率不能與整體的就業不足率作嚴謹比較，同時亦須謹慎闡釋。

失業人口（請參閱**勞動人口**內的**失業人口**）

失業率：指失業人士在勞動人口中所佔的比例。有關按行業或按職業劃分的失業率，由於在計算分子和分母時，(i) 失業人士是按其**以前**從事的行業(或職業)劃分，因而未必能確實反映他們將從事工作的行業(或職業)，而且(ii) 亦沒有首次求職人士和重新加入勞動人口的失業人士所屬行業(或職業)的資料。因此，按行業或按職業劃分的失業率不能與整體的失業率作嚴謹比較，同時亦須謹慎闡釋。

Plant and machine operators and assemblers - including well drillers and borers; ore smelting furnace operators; brick and tile kilnmen; sawmill sawyers; paper makers; chemical processing plant operators; power-generating plant and boiler operators; asbestos cement products makers; metal finishers and electroplaters; dairy and other food processing machine operators; printing machine operators; machine operators for production of textile, rubber and plastic products; assemblers; drivers; seamen and other plant and machine operators.

Elementary occupations - including street vendors; domestic helpers and cleaners; messengers; private security guards; watchmen; freight handlers; lift operators; construction labourers; hand packers; agricultural and fishery labourers.

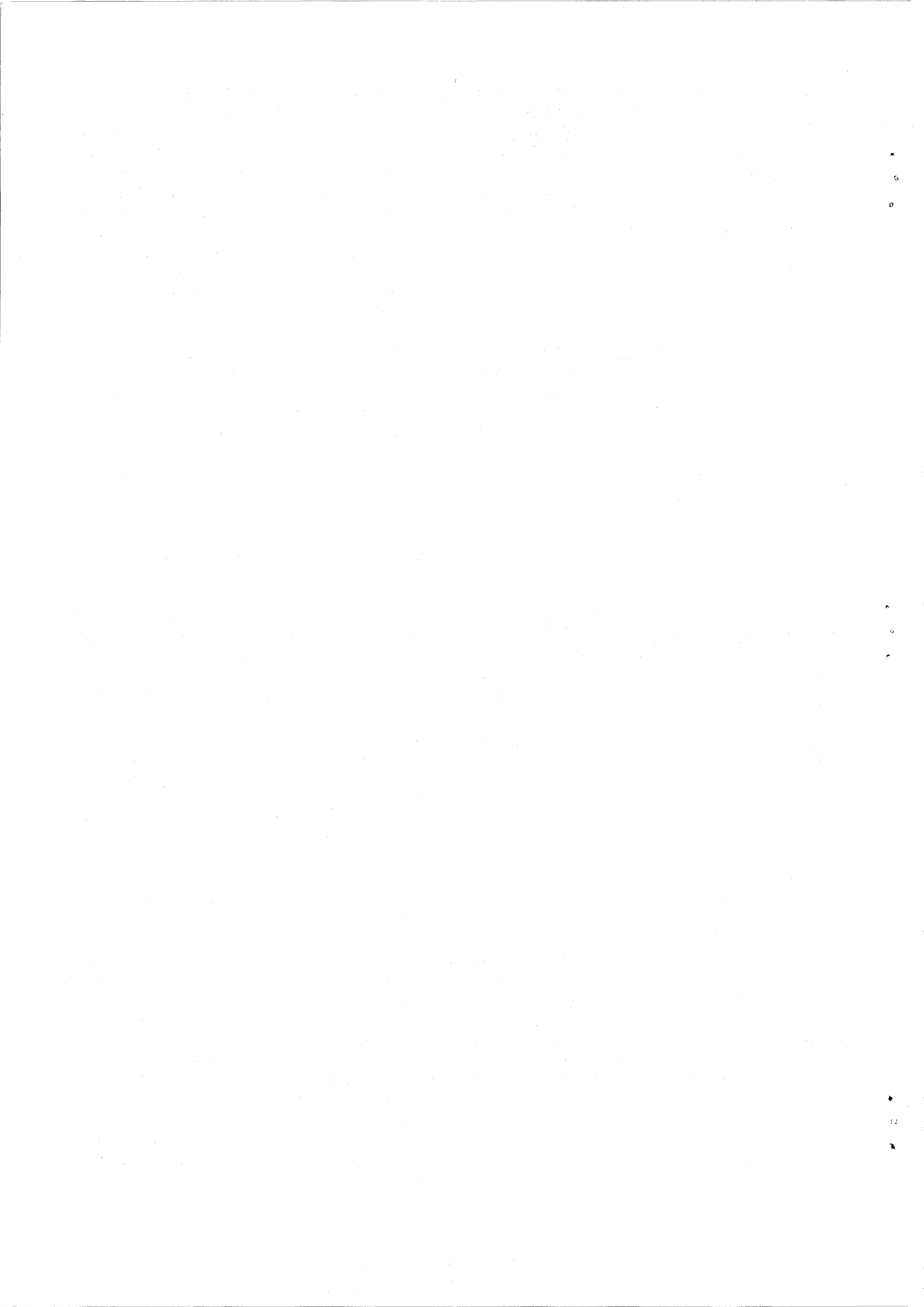
Others - including farm workers, animal husbandry workers and fishermen, and occupations unidentifiable and inadequately described.

Underemployed population (Please see *underemployed population* under **Labour force**)

Underemployment rate refers to the proportion of underemployed persons in the labour force. As regards underemployment rates by industry or by occupation, since in deriving the labour force by industry (or occupation) to serve as the denominator, (i) unemployed persons are classified according to their *previous* industry (or occupation) which may not necessarily be the one which he/she will enter, and (ii) there is no information on previous industry (or occupation) in respect of first-time job-seekers and re-entrants into the labour force, such rates are not strictly comparable to the overall underemployment rate and should be interpreted with caution.

Unemployed population (Please see *unemployed population* under **Labour force**)

Unemployment rate refers to the proportion of unemployed persons in the labour force. As regards unemployment rates by industry or by occupation, since in deriving both the numerator and the denominator, (i) unemployed persons are classified according to their *previous* industry (or occupation) which may not necessarily be the one which he/she will enter, and (ii) there is no information on previous industry (or occupation) in respect of first-time job-seekers and re-entrants into the labour force, such rates are not strictly comparable to the overall unemployment rate and should be interpreted with caution.





訂閱表格

綜合住戶統計調查按季統計報告（一九九九年期刊）

致： 香港北角英皇道二百五十號北角城中心五樓
政府統計處綜合住戶統計調查組（二）
（電話：2887 5508， 傳真：2508 1501）

請在適當空格（）內加上（）號。

（港元）

刊物名稱	每本售價	每本本地郵費	每本合計 (a)	期數 (b)	總計 (a) x (b)
<input type="checkbox"/> 綜合住戶統計調查按季統計報告 一九九九年期刊 一九九九年第一季至第四季（共四期） (J56009901B0- J56009904B0)	26.0	9.0	35.0	4	140.0
<input type="checkbox"/> 綜合住戶統計調查按季統計報告 一九九九年期刊 一九九九年第_____季至第四季（共_____期） (J560099 B0)	26.0	9.0	35.0		
<input type="checkbox"/>					
<input type="checkbox"/>					
合計					

本人現附上支票*（編號：_____）港幣 _____ 元，購買上述刊物。（註：支票應予劃線，並註明支付「香港特別行政區政府」。）

訂戶資料

姓名： _____ 地址： _____
職銜： _____
部門： _____
機構名稱： _____ 電話： _____ 傳真： _____
日期： _____

機構主要從事業務類別：

- | | | |
|---------------------------------|--------------------------------------|---------------------------------------|
| <input type="checkbox"/> 進出口貿易業 | <input type="checkbox"/> 建造業 | <input type="checkbox"/> 金融、保險及地產業 |
| <input type="checkbox"/> 製造業 | <input type="checkbox"/> 商用服務業 | <input type="checkbox"/> 教育機構 |
| <input type="checkbox"/> 研究機構 | <input type="checkbox"/> 社區、社會及個人服務業 | <input type="checkbox"/> 其他，請註明 _____ |

讀者類別（可選多項）：

- | | | |
|------------------------------------|----------------------------------|---------------------------------------|
| <input type="checkbox"/> 經理 | <input type="checkbox"/> 分析員、研究員 | <input type="checkbox"/> 市場、推廣部人員 |
| <input type="checkbox"/> 教師、大專院校講師 | <input type="checkbox"/> 學生 | <input type="checkbox"/> 其他，請註明 _____ |

訂戶類別：

- 機構 私人

你是否願意收到本處推廣其他刊物的資料？

- 是 否

* 外地訂購人士暫時無須附上支票，所需郵費將於收到訂購要求後另行通知。

你在表格上所提供的資料，只會用作辦理書刊訂購事宜，不會向任何和訂購無關的人士透露。如欲查看或更改所填報的資料，請與政府統計處的資料管理人員聯絡。地址：香港灣仔港灣道十二號灣仔政府大樓二十一樓。



Subscription Form

Quarterly Report on General Household Survey (1999 Issues)

To : General Household Survey Section (2), Census and Statistics Department
 5/F., Fortress Tower, 250 King's Road, North Point, Hong Kong.
 (Tel. No. : 2887 5508, Fax. No. : 2508 1501)

Please tick (✓) in the appropriate box (□).

(HK\$)

Title of Publication	Price per copy	Local postage	Total price (a)	No. of issues (b)	Total amount (a) x (b)
<input type="checkbox"/> Quarterly Report on General Household Survey, 1999 1st quarter to 4th quarter of 1999 (total 4 issues) (J56009901B0- J56009904B0)	26.0	9.0	35.0	4	140.0
<input type="checkbox"/> _____ to 4th quarter of 1999 (total _____ issues) (J560099 B0)	26.0	9.0	35.0		
<input type="checkbox"/>					
<input type="checkbox"/>					
TOTAL					

I enclose a cheque * (No. _____) of HK\$ _____ for the payment of the above order.
 (Cheque should be crossed and made payable to 'The Government of the Hong Kong Special Administrative Region'.)

Subscriber's Information

Name : _____ Address : _____
 Title of Post : _____
 Department : _____
 Name of _____ Tel. No. : _____ Fax. No. : _____
 Organization : _____ Date : _____

Major type of business of organization :

- | | | |
|---|--|---|
| <input type="checkbox"/> Import/export trades | <input type="checkbox"/> Construction | <input type="checkbox"/> Financing, insurance and real estate |
| <input type="checkbox"/> Manufacturing | <input type="checkbox"/> Business services | <input type="checkbox"/> Educational institution |
| <input type="checkbox"/> Research institution | <input type="checkbox"/> Community, social and personal services | |
| <input type="checkbox"/> Others, please specify _____ | | |

Type of readers (more than one choice allowed) :

- | | | |
|--|---|--|
| <input type="checkbox"/> Manager | <input type="checkbox"/> Analyst / researcher | <input type="checkbox"/> Marketing / promotional personnel |
| <input type="checkbox"/> Teaching staff / lecturer | <input type="checkbox"/> Student | <input type="checkbox"/> Others, please specify _____ |

Type of subscriber :

- Organization Individual

Do you want to receive promotional materials of other publications of this department?

- Yes No

* For mailings to addresses outside Hong Kong, please do not send in a cheque now. The required postage will be advised upon receipt of order.

The information provided herein will only be used for processing your order of publications and will not be disclosed to parties which are not involved in the subscription of these publications. You may seek access to or correction of the information by addressing your request to the *Data Controlling Officer, Census and Statistics Department, 21/F., Wanchai Tower, 12 Harbour Road, Wan Chai, Hong Kong.*



8/99 J56009902B0 \$26