

這份刊物的 PDF 版本的文字是從印刷版掃描而成，再利用光學字符識別軟件轉換成電子格式。由於原印刷版本已印製並保存多年，光學字符識別技術未必能準確地識別某些文字或數字。因此，搜索或複製此 PDF 檔案內的文字時應加以注意。

The text of this PDF publication was scanned from its printed version and then converted to electronic text using Optical Character Recognition (OCR) software. Because of the age and condition of the original printed copy, the OCR may not recognise certain characters or figures accurately. Caution should therefore be taken when searching or copying text from this PDF publication.

**Quarterly Report  
on  
General Household Survey**

**綜合住戶統計調查  
按季統計報告**

**April to June 1996  
一九九六年四月至六月**

**Census and Statistics Department, Hong Kong**

香港  
政府統計處

**Quarterly Report**  
**on**  
**General Household Survey**

綜合住戶統計調查  
按季統計報告

**April to June 1996**  
一九九六年四月至六月

Enquiries about this publication can be directed to :-

General Household Survey Section (2)  
Census and Statistics Department

Address : 5/F., Fortress Tower,  
250 King's Road, Hong Kong

Tel. No.: 2887 5508

Fax No.: 2508 1501

有關本刊物的查詢，請聯絡：—

政府統計處  
綜合住戶統計調查組（二）

地址：香港英皇道 250 號  
北角城中心五樓

電話：2887 5508

圖文傳真：2508 1501

		Page 頁數
<b>PART I SURVEY RESULTS</b>	<b>第一部 統計調查結果</b>	
1. Introduction	引言	1
2. Summary Statistics	統計數字摘要	2
3. Main Survey Findings	統計調查主要結果	3
4. Labour Force Participation Rate	勞動人口參與率	3
5. Characteristics of the Employed	就業人口的特徵	4
6. Characteristics of the Unemployed	失業人口的特徵	6
7. Characteristics of the Underemployed	就業不足人口的特徵	8
8. Tables	統計表	
Table 1 Labour force by Sex and Age	表 1 按性別及年齡劃分的勞動人口	10
Table 2 Female labour force by Marital status and Age	表 2 按婚姻狀況及年齡劃分的女性勞動人口	11
Table 3 Employed persons	表 3 就業人數	
(A) by Sex and Age	(A) 按性別及年齡劃分	12
(B) by Activity status	(B) 按經濟活動身分劃分	13
(C) by Sex and Educational attainment	(C) 按性別及教育程度劃分	13
(D) by Industry (Detailed group)	(D) 按行業(詳細組別)劃分	15
(E) by Sex and Industry	(E) 按性別及行業劃分	17
(F) by Sex and Occupation	(F) 按性別及職業劃分	20
(G) by Industry and Age	(G) 按行業及年齡劃分	23
(H) by Occupation and Age	(H) 按職業及年齡劃分	24
(I) by Hours of work	(I) 按工作時數劃分	25
(J) by Monthly employment earnings	(J) 按每月就業收入劃分	26
Table 4 Median hours of work of employed persons by Industry	表 4 按行業劃分的就業人士工作時數中位數	27
Table 5 Median monthly employment earnings	表 5 每月就業收入中位數	
(A) by Industry of main employment	(A) 按主業所屬行業劃分	28
(B) by Occupation of main employment	(B) 按主業所屬職業劃分	29
Table 6 Employed persons who worked less than 35 hours by Reason for working less than 35 hours during the seven days before enumeration	表 6 按在統計前七天內工作少於三十五小時的原因劃分的工作少於三十五小時的就業人數	30
Table 7 Unemployed persons	表 7 失業人數	
(A) by Sex and Age	(A) 按性別及年齡劃分	31
(B) by Sex and Educational attainment	(B) 按性別及教育程度劃分	32
(C) by Duration of unemployment	(C) 按持續失業期間劃分	34

	Page 頁數
Table 8 Unemployed persons with a previous job	表 8 曾工作的失業人數
(A) by Previous industry (Detailed group)	(A) 按以前從事的行業(詳細組別)劃分 35
(B) by Sex and Previous industry	(B) 按性別及以前從事的行業劃分 37
(C) by Sex and Previous occupation	(C) 按性別及以前從事的職業劃分 40
(D) by Previous industry and Age	(D) 按以前從事的行業及年齡劃分 43
(E) by Previous occupation and Age	(E) 按以前從事的職業及年齡劃分 44
(F) by Previous industry and Mode of leaving last job	(F) 按以前從事的行業及離職方式劃分 45
Table 9 Median duration of unemployment by Previous industry	表 9 按以前從事的行業劃分的持續失業期間中位數 48
Table 10 Job-seekers	表 10 求職人數
(A) by Main action taken to seek work	(A) 按尋找工作的主要方法劃分 49
(B) by Desired industry of employment	(B) 按期望從事的行業劃分 50
(C) by Desired occupation of employment	(C) 按期望從事的職業劃分 51
Table 11 Underemployed persons	表 11 就業不足人數
(A) by Sex and Age	(A) 按性別及年齡劃分 52
(B) by Sex and Educational attainment	(B) 按性別及教育程度劃分 53
(C) by Industry (Detailed group)	(C) 按行業(詳細組別)劃分 55
(D) by Sex and Industry	(D) 按性別及行業劃分 57
(E) by Sex and Occupation	(E) 按性別及職業劃分 60
(F) by Industry and Age	(F) 按行業及年齡劃分 63
(G) by Occupation and Age	(G) 按職業及年齡劃分 64
(H) by Hours of work	(H) 按工作時數劃分 65
(I) by Monthly employment earnings	(I) 按每月就業收入劃分 65
9. Charts	統計圖
Chart 1 Unemployment Rates	圖 1 失業率 66
Chart 2 Unemployed Persons	圖 2 失業人數 66
Chart 3 Underemployment Rates	圖 3 就業不足率 67
Chart 4 Underemployed Persons	圖 4 就業不足人數 67
<b>PART II SURVEY METHODOLOGY</b>	<b>第二部 統計調查方法</b>
1. Coverage of Survey and Sample Design	統計調查範圍及樣本設計 68
2. The Questionnaire	問卷 68
3. Enumeration Experience	訪問經驗 70
4. Reliability of the Estimates	估值的可靠性 70
<b>PART III DEFINITION OF TERMS</b>	<b>第三部 詞彙釋義 72</b>

# PART I SURVEY RESULTS

## 第一部 統計調查結果

### 1. Introduction

1.1 This report presents the results of the General Household Survey conducted by the Census and Statistics Department during the second quarter (Q2) of 1996.

1.2 The General Household Survey is a sample survey which has been conducted on a continuous basis since August 1981. Its main objective is to collect information on the labour force, unemployment and underemployment.

1.3 The definitions used in the survey for measuring labour force, unemployment and underemployment follow closely those recommended by the International Labour Organization (ILO).

1.4 Part I of this report gives the survey findings. Part II outlines the survey methodology. Part III provides the definition of terms adopted for the survey.

1.5 The sample size of the General Household Survey was increased by about 50% as from August 1995 and further increased by 33% as from April 1996. Consequently, more detailed analyses of the socio-economic characteristics of the labour force can be made. Thus, as from the Q3 1995 issue, new tables and more refined analyses have been added.

- Notes:
- (1) For simplicity, throughout the report:  
"Q1" stands for January to March,  
"Q2" for April to June,  
"Q3" for July to September, and  
"Q4" for October to December.
  - (2) Owing to rounding, there may be a slight discrepancy between the sum of individual items and the total as shown in the tables.
  - (3) In the tables, estimates with coefficient of variation (CV) greater than 25% are marked with an asterisk (\*) and should be interpreted with particular caution. For technical details regarding the CV, please see Section 4 of Part II on Page 70.

### 1. 引言

1.1 本報告載列政府統計處於一九九六年第二季所進行的綜合住戶統計調查的結果。

1.2 綜合住戶統計調查是一項抽樣統計調查，自一九八一年八月開始持續進行，旨在搜集有關勞動人口、失業和就業不足的資料。

1.3 在這項統計調查中，計算勞動人口、失業和就業不足數字所採用的定義，基本上遵照國際勞工組織的建議。

1.4 本報告第一部載列統計調查的結果，第二部概述統計調查的方法，第三部提供統計調查所採用的詞彙釋義。

1.5 自一九九五年八月起，綜合住戶統計調查的樣本規模加大了約百分之五十。由今年四月起，樣本規模再加大約百分之三十三，因而有關勞動人口的社會和經濟特徵的資料，可作更詳細的分析。所以本報告自一九九五年第三季的版本開始，已增添了新的統計表及較精細的分析。

- 註釋：
- (1) 為求簡便，本報告中：  
「第一季」指 一月至三月  
「第二季」指 四月至六月  
「第三季」指 七月至九月  
「第四季」指 十月至十二月
  - (2) 由於進位關係，統計表內個別項目加起來可能與總數略有出入。
  - (3) 統計表內離中系數超過 25% 的估值會註上星號 (\*)，顯示該估值須謹慎闡釋。有關離中系數的技術性詳情，請參閱在第七十頁的第二部第四節。

## 2. Summary Statistics

### 統計數字摘要

	1995 Q2 第二季	1996 Q1 第一季	1996 Q2 第二季
<b>The Labour Force</b>			
<b>勞動人口</b>			
Labour force ('000) 勞動人口('000)	3 079.7	3 143.1	3 173.7
Male ('000) 男('000)	1 911.1	1 946.6	1 962.5
Female ('000) 女('000)	1 168.6	1 196.5	1 211.2
Labour force participation rate (%) 勞動人口參與率(%)	63.0	62.9	63.0
Male (%) 男(%)	77.6	77.3	77.1
Female (%) 女(%)	48.2	48.3	48.5
<b>Employment</b>			
<b>就業</b>			
Employed persons ('000) 就業人數('000)	2 989.0	3 049.0	3 081.1
Median hours of work during the seven days before enumeration 統計前七天內工作時數中位數	44	45	45
Median monthly employment earnings (HK\$) 每月就業收入中位數 (港元)	8,500	9,000 <sup>(1)</sup>	9,000
<b>Unemployment</b>			
<b>失業</b>			
Unemployed persons ('000) 失業人數('000)	90.6	94.1	92.6
Unemployment rate (%) 失業率(%)			
- Unadjusted 未經調整	2.9	3.0	2.9
- Adjusted for seasonal variations in the proportion of first-time job-seekers in the labour force 按首次求職人士佔勞動人口 比例的季節性差異作出調整	3.1	3.2	3.1
<b>Underemployment</b>			
<b>就業不足</b>			
Underemployed persons ('000) 就業不足人數('000)	65.2	62.0	56.9
Underemployment rate (%) 就業不足率(%)	2.1	2.0	1.8

Note : (1) Earnings exclude Chinese New Year bonus/double pay.

註釋 : (1) 收入不包括農曆年花紅/雙糧。

### 3. Main Survey Findings

3.1 The main findings in respect of Q2 1996 are :

- (a) the estimated size of the labour force was 3 173 700 (Table 1).
- (b) the estimated number of employed persons was 3 081 100 (Table 3A).
- (c) the estimated number of unemployed persons was 92 600, or 2.9% of the labour force (Table 7A and Chart 2).
- (d) the unemployment rate, adjusted for seasonal variations in the proportion of first-time job-seekers in the labour force, was 3.1% (Chart 1).
- (e) the estimated number of underemployed persons was 56 900, or 1.8% of the labour force (Table 11A, Charts 3 and 4).

### 4. Labour Force Participation Rate

4.1 The estimated labour force participation rate (LFPR) for Q2 1996 was 63.0%, as against 62.9% for Q1 1996 and 63.0% for Q2 1995. The increase over Q1 1996 is statistically not significant. In absolute terms, the labour force increased by 30 700 over Q1 1996 and by 94 000 over Q2 1995 (Table 1).

4.2 The LFPR for males (77.1%) was much higher than that for females (48.5%). There were no marked changes in the patterns of the sex-age-specific LFPRs as compared with Q1 1996 and Q2 1995. In all these quarters, the LFPR was highest in the 30-49 age group for males and in the 20-29 age group for females (Table 1).

4.3 The LFPR for never married females for Q2 1996 was 69.0%, significantly higher than that for ever married females (40.1%) (Table 2).

### 3. 統計調查主要結果

3.1 一九九六年第二季統計調查的主要結果如下：

- (a) 勞動人口的估計數字為 3 173 700 人 (表 1)。
- (b) 就業人數估計為 3 081 100 人 (表 3A)。
- (c) 失業人數估計為 92 600 人，佔勞動人口 2.9% (表 7A 和圖 2)。
- (d) 失業率 (已按首次求職人士佔勞動人口比例的季節性差異作出調整) 為 3.1% (圖 1)。
- (e) 就業不足人數估計為 56 900 人，佔勞動人口 1.8% (表 11A，圖 3 和 4)。

### 4. 勞動人口參與率

4.1 一九九六年第二季的勞動人口參與率估計為 63.0%，而九六年第一季為 62.9%，九五年第二季則為 63.0%。一九九六年第二季相對於九六年第一季的升幅，從統計觀點而言並不顯著。以絕對數值計，一九九六年第二季勞動人口較九六年第一季增加 30 700 人，較九五年第二季則增加 94 000 人 (表 1)。

4.2 男性勞動人口參與率 (77.1%) 遠高於女性勞動人口參與率 (48.5%)。與一九九六年第一季和九五年第二季數字比較，按性別及年齡劃分的勞動人口參與率無顯著變動。在這三季期間，男性勞動人口參與率以三十至四十九歲年齡組別為最高，而女性勞動人口參與率則以二十至二十九歲年齡組別為最高 (表 1)。

4.3 一九九六年第二季，未婚女性勞動人口參與率為 69.0%，較曾結婚女性勞動人口參與率 (40.1%) 明顯為高 (表 2)。

## 5. Characteristics of the Employed

5.1 The estimated number of employed persons in Q2 1996 was 3 081 100. Among those employed:

- (a) 61.6% were males (Table 3A);
- (b) the median age of male workers was 38 and that of female workers was 33;
- (c) 89.5% were employees (including outworkers) (Table 3B);
- (d) 58.0% had secondary or matriculation education and 20.0% had primary education (Table 3C);
- (e) 28.8% were in the wholesale, retail and import/export trades, restaurants and hotels sector, and 21.3% in the community, social and personal services sector (Table 3D);
- (f) those in the wholesale and retail trades constituted the largest proportion (11.7%), followed by those in the transport sector (9.6%) (Table 3D);
- (g) for males, the largest proportions were in the wholesale, retail and import/export trades, restaurants and hotels sector (16.1% of all employed persons) and the manufacturing industry (10.7%); for females, the largest proportions were in the wholesale, retail and import/export trades, restaurants and hotels sector (12.7%) and the community, social and personal services sector (12.3%) (Table 3E);
- (h) 18.0% were in clerical occupations and 17.6% in elementary occupations (Table 3F);
- (i) for males, the largest proportions were craft and related workers (11.4%) and in elementary occupations (8.7%); for females, the largest proportions were clerks (12.6%) and in elementary occupations (9.0%) (Table 3F);

## 5. 就業人口的特徵

5.1 一九九六年第二季的就業人數估計為 3 081 100 人。在這些就業人士中：

- (a) 61.6% 的人士為男性 (表 3A)；
- (b) 男性就業人士的年齡中位數為 38 歲，而女性就業人士則為 33 歲；
- (c) 89.5% 的人士為僱員 (包括外發工) (表 3B)；
- (d) 58.0% 的人士有中學或預科程度，20.0% 有小學程度 (表 3C)；
- (e) 28.8% 的人士從事批發、零售、進出口貿易、飲食及酒店業，21.3% 從事社區、社會及個人服務業 (表 3D)；
- (f) 從事批發及零售業的就業人士佔最大比例 (佔 11.7%)，其次是從事運輸業的就業人士，佔 9.6% (表 3D)；
- (g) 就男性而言，佔最大比例的是從事批發、零售、進出口貿易、飲食及酒店業的人士 (佔所有就業人士的 16.1%) 和從事製造業的人士 (佔 10.7%)；而女性則以從事批發、零售、進出口貿易、飲食及酒店業的人士 (佔 12.7%) 和從事社區、社會及個人服務業的人士 (佔 12.3%)，佔最大比例 (表 3E)；
- (h) 18.0% 的人士任職文員；而 17.6% 為非技術工人 (表 3F)；
- (i) 就男性而言，在所有就業人士中，任職工藝及有關人員 (佔 11.4%) 和非技術工人 (佔 8.7%) 所佔的比例最大；而女性則以文員 (佔 12.6%) 和非技術工人 (佔 9.0%) 所佔的比例最大 (表 3F)；

- (j) the largest proportion was in the wholesale, retail and import/export trades, restaurants and hotels sector for all age groups (Table 3G);
  - (k) for the 15-29 age group, the largest proportion was clerks, while for the age groups 30-49 and 50 or over, the largest proportion was in elementary occupations (Table 3H);
  - (l) 11.0% worked less than 35 hours in the seven days before enumeration. Among them, 58.2% did so because they were on vacation/holiday and 14.5% because of slack work. (Tables 3I and 6);
  - (m) the median hours of work during the seven days before enumeration was 45 (Table 4).
- (j) 在所有年齡組別中，從事批發、零售、進出口貿易、飲食及酒店業的就業人士佔最大比例（表 3G）；
  - (k) 在十五至二十九歲年齡組別中，任職文員的人士佔所有就業人士最大比例，而在三十至四十九歲和五十歲或以上的年齡組別中，非技術工人則佔最大比例（表 3H）；
  - (l) 11.0% 的人士在統計前七天內工作少於三十五小時，其中 58.2% 是由於休假所致，14.5% 則由於開工不足所致（表 3I 和 6）；
  - (m) 就業人士在統計前七天內的工作時數中位數為 45 小時（表 4）。

5.2 Regarding the employment earnings of employed persons:

- (a) the median monthly employment earnings was \$9,000 (Table 3J);
- (b) workers in the financing, insurance, real estate and business services sector had the highest median monthly employment earnings (\$11,000), while those in the manufacturing industry had the lowest (\$8,500) (Table 5A);
- (c) workers in professional occupations had the highest median monthly employment earnings (\$23,000), while those in elementary occupations had the lowest (\$5,500) among all major occupational groups (Table 5B).

5.2 有關就業人士的就業收入資料如下：

- (a) 每月就業收入中位數為 9,000 元（表 3J）；
- (b) 每月就業收入中位數以從事金融、保險、地產及商用服務業的人士為最高（11,000 元），而以從事製造業的人士為最低（8,500 元）（表 5A）；
- (c) 在所有主要職業組別中，專業人員的每月就業收入中位數為最高（23,000 元），而非技術工人的每月就業收入中位數則為最低（5,500 元）（表 5B）。

## 6. Characteristics of the Unemployed

6.1 The estimated **unemployment rate** for Q2 1996 was 2.9%. After adjusting for seasonal variations in the proportion of first-time job-seekers in the labour force, the rate was 3.1%; the corresponding rates for Q1 1996 and Q2 1995 were 3.2% and 3.1% respectively. The decrease below Q1 1996 is statistically not significant (Table 7A and Chart 1).

6.2 The estimated number of unemployed persons in Q2 1996 was 92 600. Among those **unemployed**:

- (a) 63 200 were males and 29 400 were females. The unemployment rate was 3.2% for males and 2.4% for females (Table 7A and Chart 2);
- (b) 60.8% were aged between 20 and 39 (Table 7A);
- (c) the unemployment rate for males was higher than that for females for all the age groups (Table 7A);
- (d) persons with primary education had the highest unemployment rate (3.3%) (Table 7B);
- (e) for males, the unemployment rate was highest for those who had attained primary education (3.7%); for females, the unemployment rate was highest for those who had attained secondary or matriculation education (2.9%) (Table 7B);
- (f) 45.7% had been out of work for less than two months. The median duration of unemployment was 69 days (Table 7C);
- (g) 97.1% were job-seekers. Among them, 67.9% answered or placed advertisements and 22.8% sought assistance from relatives or friends as their main action taken to seek work (Table 10A);
- (h) among the job-seekers, 26.7% desired to work in the wholesale, retail and import/export trades, restaurants and hotels sector (Table 10B);
- (i) among the job-seekers, 17.1% desired to be service workers and shop sales workers (Table 10C).

6.3 Among the 85 700 **unemployed persons who had a previous job** (not including re-entrants into the labour force):

## 6. 失業人口的特徵

6.1 一九九六年第二季的失業率估計為 2.9%。按首次求職人士佔勞動人口比例的季節性差異作出調整的失業率為 3.1%；而九六年第一季為 3.2%，九五年第二季則為 3.1%。一九九六年第二季相對於九六年第一季的跌幅，從統計觀點而言並不顯著（表 7A 和圖 1）。

6.2 一九九六年第二季的失業人數估計為 92 600 人。在這些失業人士中：

- (a) 男性有 63 200 人，女性有 29 400 人。男性的失業率為 3.2%，而女性的失業率則為 2.4%（表 7A 和圖 2）；
- (b) 60.8% 的人士年齡介乎二十至三十九歲之間（表 7A）；
- (c) 在所有年齡組別中，男性的失業率均較女性的失業率為高（表 7A）；
- (d) 只有小學程度的人士的失業率(3.3%) 為最高（表 7B）；
- (e) 就男性而言，具小學程度的人士的失業率(3.7%)為最高；女性則以達中學或預科程度的人士的失業率(2.9%)為最高（表 7B）；
- (f) 45.7% 的人士持續失業少於兩個月。持續失業期間中位數為 69 天（表 7C）；
- (g) 求職人士佔 97.1%。其中 67.9% 的人士用回應或刊登廣告方式作為尋找工作的主要方法，而 22.8% 則向親戚或朋友尋求援助（表 10A）；
- (h) 在求職人士中，26.7% 期望從事批發、零售、進出口貿易、飲食及酒店業（表 10B）；
- (i) 在求職人士中，17.1% 期望任職服務工作及商店銷售人員（表 10C）。

6.3 在 85 700 名曾工作的失業人士（不包括重新加入勞動人口的失業人士）中：

- (a) 35.1% had a previous job in the wholesale, retail and import/export trades, restaurants and hotels sector and 24.8% in the manufacturing industry (Table 8B);
- (b) the largest group was from the wholesale and retail trades (13 600), followed by the restaurants and hotels sector (11 000) (Table 8A);
- (c) the unemployment rate for the storage sector was highest (6.3%), followed by that for the clothing and footwear industry (5.2%) (Table 8A);
- (d) for males, the largest proportion was from the wholesale, retail and import/export trades, restaurants and hotels sector (21.9% of all unemployed persons with a previous job), followed by the manufacturing industry (16.2%) and the construction industry (11.5%); for females, the largest proportions were from the wholesale, retail and import/export trades, restaurants and hotels sector (13.2% of all unemployed persons with a previous job) and the manufacturing industry (8.5%) (Table 8B);
- (e) 22.2% had previously been service workers and shop sales workers and 18.1% had previously been in elementary occupations (Table 8C);
- (f) for males, the largest proportions were craft and related workers (15.8% of all unemployed persons with a previous job) and in elementary occupations (15.0%); for females, the largest proportions were clerks (10.2% of all unemployed persons with a previous job) and service workers and shop sales workers (7.5%) (Table 8C);
- (g) for the age groups 15-29 and 30-49, the largest proportion was from the wholesale, retail and import/export trades, restaurants and hotels sector. For the age group 50 or over, the largest proportion was from the manufacturing industry (Table 8D);
- (h) for the 15-29 age group, the largest proportion was service workers and shop sales workers. For the age groups 30-49 and 50 or over, the largest proportions were plant and machine operators and assemblers, and were in elementary occupations respectively (Table 8E);
- (a) 35.1% 的人士以前曾從事批發、零售、進出口貿易、飲食及酒店業，24.8% 以前曾從事製造業 (表 8B)；
- (b) 以前從事批發及零售業的人士為數最多 (13 600 人)，其次是從事飲食及酒店業 (11 000 人) (表 8A)；
- (c) 從事倉庫業的人士的失業率為最高 (6.3%)，其次是從事服裝及鞋類製品業 (5.2%) (表 8A)；
- (d) 就男性而言，從事批發、零售、進出口貿易、飲食及酒店業的人士，佔最大比例 (佔所有曾工作的失業人士的 21.9%)，其次是從事製造業 (佔 16.2%) 和建造業 (佔 11.5%) 的人士；女性則以從事批發、零售、進出口貿易、飲食及酒店業 (佔所有曾工作的失業人士 13.2%) 和製造業 (佔 8.5%) 的人士所佔的比例最大 (表 8B)；
- (e) 22.2% 的人士以前曾任職服務工作及商店銷售人員，18.1% 以前曾任職非技術工人 (表 8C)；
- (f) 就男性而言，曾任職工藝及有關人員 (佔所有曾工作的失業人士的 15.8%) 和非技術工人 (佔 15.0%) 的人士所佔的比例最大；而女性則以曾任職文員 (佔所有曾工作的失業人士的 10.2%) 和服務工作及商店銷售人員 (佔 7.5%) 所佔的比例最大 (表 8C)；
- (g) 在十五至二十九歲和三十至四十九歲的年齡組別中，以前從事批發、零售、進出口貿易、飲食及酒店業的人士佔最大比例，而在五十歲或以上年齡組別中，則以從事製造業的人士為數最多 (表 8D)；
- (h) 在十五至二十九歲年齡組別中，以前任職服務工作及商店銷售人員的人士佔最大比例。至於在三十至四十九歲和五十歲或以上的年齡組別中，則分別以任職機台及機器操作員及裝配員和非技術工人佔最大比例 (表 8E)；

- (i) 60.3% had been dismissed or laid off while 30.6% had left their jobs because of job dissatisfaction (Table 8F);
- (j) the largest proportion of unemployed persons with the mode of leaving last job being dismissed or laid off was from the manufacturing industry (18.7% of all unemployed persons with a previous job), while the largest proportion with the mode being dissatisfied with job was from the wholesale, retail and import/export trades, restaurants and hotels sector (14.4%) (Table 8F);
- (k) the median duration of unemployment was highest for those from the manufacturing industry (96 days), followed by those from the construction industry (66 days) (Table 9).

- (i) 60.3% 的人士遭解僱或遣散，30.6% 則因對工作不滿而離職（表 8F）；
- (j) 遭解僱或遣散的失業人士以從事製造業的人士所佔的比例最大（佔所有曾工作的失業人士的 18.7%）；因對工作不滿而離職的失業人士，則以從事批發、零售、進出口貿易、飲食及酒店業的人士為數最多（佔 14.4%）（表 8F）；
- (k) 以前從事製造業人士的持續失業期間中位數為最高（96 天），其次是從事建造業的失業人士（66 天）（表 9）。

## 7. Characteristics of the Underemployed

7.1 The estimated underemployment rate for Q2 1996 was 1.8%, as against 2.0% for Q1 1996 and 2.1% for Q2 1995. The decrease below Q1 1996 is statistically not significant, while that below Q2 1995 is statistically significant (Table 11A and Chart 3).

## 7. 就業不足人口的特徵

7.1 一九九六年第二季的就業不足率估計為 1.8%，而九六年第一季為 2.0%，九五年第二季則為 2.1%。一九九六年第二季相對於九六年第一季的跌幅，從統計觀點而言並不顯著；但相對於九五年第二季的跌幅，從統計觀點而言是顯著的（表 11A 和圖 3）。

7.2 The estimated number of underemployed persons in Q2 1996 was 56 900. Among those underemployed:

7.2 一九九六年第二季的就業不足人數估計為 56 900 人。在這些就業不足人士中：

- (a) 46 100 were males and 10 800 were females. The underemployment rate was 2.3% for males and 0.9% for females (Table 11A, Charts 3 and 4);
- (b) 61.9% were aged between 30 and 49 (Table 11A);
- (c) the underemployment rate for males was higher than that for females for the age groups under 60 (Table 11A);
- (d) 47.3% had secondary or matriculation education and 44.9% had primary education (Table 11B);
- (e) for both males and females, the underemployment rates were highest for those who had attained kindergarten education or no schooling (Table 11B);
- (f) 48.8% were in the construction industry and 20.6% in the manufacturing industry (Table 11D);
- (g) the largest group was in the foundation and superstructure industry (16 200), followed by the decoration and maintenance industry (11 500) (Table 11C);

- (a) 男性有 46 100 人，女性有 10 800 人。男性的就業不足率為 2.3%，而女性的就業不足率則為 0.9%（表 11A，圖 3 和 4）；
- (b) 61.9% 的人士介乎三十至四十九歲（表 11A）；
- (c) 在六十歲以下的年齡組別中，男性的就業不足率均較女性的就業不足率為高（表 11A）；
- (d) 47.3% 的人士有中學或預科程度，44.9% 有小學程度（表 11B）；
- (e) 就男性和女性而言，只具幼稚園教育程度或未受教育的人士的就業不足率均為最高（表 11B）；
- (f) 48.8% 的人士從事建造業，20.6% 從事製造業（表 11D）；
- (g) 從事地基及上蓋工程的人士為數最多（16 200 人），其次是從事裝修及保養工程（11 500 人）（表 11C）；

- (h) the underemployment rate for the decoration and maintenance industry was highest (12.9%), followed by that for the foundation and superstructure industry (8.1%) (Table 11C);
- (i) for males, the largest proportions were in the construction industry (48.5% of all underemployed persons) and the transport, storage and communication sector (14.0%); for females, the largest proportion was in the manufacturing industry (12.4% of all underemployed persons) (Table 11D);
- (j) 41.6% were craft and related workers (Table 11E);
- (k) for males, the largest proportions were craft and related workers (41.3%) and in elementary occupations (22.7%); for females, the largest proportions were plant and machine operators and assemblers (9.7%) and in elementary occupations (5.3%) (Table 11E);
- (l) for all age groups, the largest proportion was in the construction industry (Table 11F);
- (m) for the age groups 15-29 and 30-49, the largest proportion was craft and related workers. For the age group 50 or over, the largest proportion was in elementary occupations (Table 11G);
- (n) 70.7% worked less than 25 hours and 23.6% worked 30-34 hours during the seven days before enumeration. The median hours of work was 24 (Table 11H);
- (o) the median monthly employment earnings was \$5,000 (Table 11I).
- (h) 從事裝修及保養工程的人士的就業不足率為最高 (12.9%)，其次是從事地基及上蓋工程 (8.1%) (表 11C)；
- (i) 就男性而言，大部分從事建造業 (佔所有就業不足人士 48.5%) 及運輸、倉庫及通訊業 (佔 14.0%)；女性則以從事製造業的人士所佔的比例最大 (佔所有就業不足人士 12.4%) (表 11D)；
- (j) 41.6% 的人士任職工藝及有關人員 (表 11E)；
- (k) 就男性而言，任職工藝及有關人員 (佔 41.3%) 和非技術工人 (22.7%) 的人士所佔的比例最大；女性則以任職機台及機器操作員及裝配員 (佔 9.7%) 和非技術工人 (佔 5.3%) 所佔的比例最大 (表 11E)；
- (l) 從事建造業的人士在所有年齡組別中，均佔最大比例 (表 11F)；
- (m) 在十五至二十九歲和三十至四十九歲的年齡組別中，任職工藝及有關人員的人士佔最大比例，而在五十歲或以上年齡組別中，則以任職非技術工人所佔的比例最大 (表 11G)；
- (n) 70.7% 的人士在統計前七天內工作少於二十五小時，23.6% 工作三十至三十四小時。工作時數中位數為 24 小時 (表 11H)；
- (o) 每月就業收入中位數為 5,000 元 (表 11I)。

**Table 1 Labour force by Sex and Age**  
**表 1 按性別及年齡劃分的勞動人口**

Sex / Age group 性別/年齡組別	1995 Q2 第二季		1996 Q1 第一季		1996 Q2 第二季	
	No. 人數 (‘000)	Rate@ 比率 (%)	No. 人數 (‘000)	Rate@ 比率 (%)	No. 人數 (‘000)	Rate@ 比率 (%)
<b>Male</b>						
男						
15 - 19	44.0	21.9	49.6	24.6	42.6	21.0
20 - 29	420.6	87.9	419.6	88.4	420.2	88.3
30 - 39	639.2	98.8	646.0	98.4	653.9	98.6
40 - 49	465.1	97.7	489.8	97.5	501.3	97.3
50 - 59	233.8	85.9	236.1	84.8	237.7	84.3
≥ 60	108.4	27.8	105.6	26.2	107.0	26.4
Overall 合計	1 911.1	77.6	1 946.6	77.3	1 962.5	77.1
<b>Female</b>						
女						
15 - 19	33.9	18.0	38.6	20.3	34.1	17.8
20 - 29	416.1	79.9	417.6	79.7	421.7	80.6
30 - 39	393.1	61.0	406.4	62.1	413.5	62.6
40 - 49	224.5	53.3	234.0	52.6	242.7	53.4
50 - 59	77.0	34.9	77.1	34.2	76.1	33.6
≥ 60	24.0	5.6	22.8	5.2	23.1	5.3
Overall 合計	1 168.6	48.2	1 196.5	48.3	1 211.2	48.5
<b>Overall 合計</b>						
15 - 19	78.0	20.0	88.1	22.5	76.7	19.4
20 - 29	836.7	83.7	837.2	83.8	841.9	84.2
30 - 39	1 032.3	79.9	1 052.4	80.3	1 067.4	80.6
40 - 49	689.6	76.9	723.7	76.4	744.0	76.7
50 - 59	310.7	63.0	313.2	62.1	313.8	61.7
≥ 60	132.4	16.2	128.4	15.2	130.0	15.4
Overall 合計	3 079.7	63.0	3 143.1	62.9	3 173.7	63.0

Note : @ Labour force participation rate in respect of the specified sex/age group.

註釋 : @ 在某一特定的性別/年齡組別的勞動人口參與率。

**Table 2 Female labour force by Marital status and Age****表 2 按婚姻狀況及年齡劃分的女性勞動人口**

Marital status/Age group 婚姻狀況/年齡組別	1995 Q2 第二季		1996 Q1 第一季		1996 Q2 第二季	
	No. 人數 ('000)	Rate <sup>@</sup> 比率 (%)	No. 人數 ('000)	Rate <sup>@</sup> 比率 (%)	No. 人數 ('000)	Rate <sup>@</sup> 比率 (%)
<b>Never married</b> 從未結婚						
15 - 19	32.9	17.6	37.6	20.0	<b>32.9</b>	<b>17.4</b>
20 - 29	319.6	86.0	313.0	86.6	<b>310.5</b>	<b>86.5</b>
30 - 39	120.3	96.9	123.7	97.2	<b>127.3</b>	<b>95.7</b>
≥ 40	32.5	73.5	29.6	66.5	<b>31.8</b>	<b>67.6</b>
Overall 合計	505.3	69.5	503.9	69.8	<b>502.5</b>	<b>69.0</b>
<b>Ever married<sup>#</sup></b> 曾經結婚 <sup>#</sup>						
15 - 19	1.0 *	70.0 *	1.0 *	52.7 *	<b>1.2 *</b>	<b>55.1 *</b>
20 - 29	96.5	64.6	104.6	64.5	<b>111.2</b>	<b>67.6</b>
30 - 39	272.8	52.4	282.7	53.7	<b>286.2</b>	<b>54.2</b>
≥ 40	293.0	28.6	304.3	28.6	<b>310.1</b>	<b>28.9</b>
Overall 合計	663.2	39.1	692.5	39.4	<b>708.7</b>	<b>40.1</b>

Notes : @ Labour force participation rate in respect of the specified marital status/age group.

# Including those married, widowed and divorced/separated.

註釋 : @ 在某一特定的婚姻狀況/年齡組別的勞動人口參與率。

# 包括已婚、喪偶及離婚/分居人士。

**Table 3A Employed persons by Sex and Age**  
**表 3A 按性別及年齡劃分的就業人數**

Sex/Age group 性別/年齡組別	1995 Q2 第二季		1996 Q1 第一季		1996 Q2 第二季	
	No. 人數 (‘000)	% 百分比	No. 人數 (‘000)	% 百分比	No. 人數 (‘000)	% 百分比
<b>Male</b>						
男						
15 - 19	39.4	1.3	43.2	1.4	37.0	1.2
20 - 29	402.3	13.5	401.1	13.2	400.3	13.0
30 - 39	623.5	20.9	628.7	20.6	637.6	20.7
40 - 49	451.8	15.1	475.3	15.6	489.3	15.9
50 - 59	226.2	7.6	227.0	7.4	229.6	7.5
≥ 60	106.7	3.6	104.3	3.4	105.5	3.4
Sub-total 小計	1 849.9	61.9	1 879.7	61.7	1 899.3	61.6
<b>Female</b>						
女						
15 - 19	31.1	1.0	34.6	1.1	30.5	1.0
20 - 29	404.3	13.5	405.4	13.3	409.1	13.3
30 - 39	387.2	13.0	400.6	13.1	405.9	13.2
40 - 49	217.8	7.3	230.3	7.6	238.1	7.7
50 - 59	75.0	2.5	75.7	2.5	75.1	2.4
≥ 60	23.7	0.8	22.7	0.7	23.0	0.7
Sub-total 小計	1 139.1	38.1	1 169.3	38.3	1 181.7	38.4
<b>Overall</b>						
合計						
15 - 19	70.5	2.3	77.8	2.6	67.5	2.2
20 - 29	806.7	27.0	806.5	26.5	809.4	26.3
30 - 39	1 010.6	33.8	1 029.3	33.8	1 043.5	33.9
40 - 49	669.5	22.4	705.6	23.1	727.4	23.6
50 - 59	301.2	10.1	302.7	9.9	304.7	9.9
≥ 60	130.5	4.4	127.0	4.2	128.5	4.2
Total 總計	2 989.0	100.0	3 049.0	100.0	3 081.1	100.0

**Table 3B Employed persons by Activity status****表 3B 按經濟活動身分劃分的就業人數**

Activity status 經濟活動身分	1995 Q2 第二季		1996 Q1 第一季		1996 Q2 第二季	
	No.	%	No.	%	No.	%
	人數 (‘000)	百分比	人數 (‘000)	百分比	人數 (‘000)	百分比
Employees 僱員	2 653.6	88.8	2 732.4	89.6	2 758.6	89.5
Employers 僱主	166.9	5.6	160.3	5.3	163.3	5.3
Self-employed 自營作業者	151.3	5.0	136.2	4.5	141.9	4.6
Unpaid family workers 無酬家庭從業員	17.2	0.6	20.1	0.7	17.3	0.6
Total 總計	2 989.0	100.0	3 049.0	100.0	3 081.1	100.0

**Table 3C Employed persons by Sex and Educational attainment****表 3C 按性別及教育程度劃分的就業人數**

Sex/Educational attainment 性別/教育程度	1995 Q2 第二季		1996 Q1 第一季		1996 Q2 第二季	
	No.	%	No.	%	No.	%
	人數 (‘000)	百分比	人數 (‘000)	百分比	人數 (‘000)	百分比
Male 男						
No schooling/Kindergarten 未受教育/幼稚園	47.7	1.6	36.3	1.2	38.0	1.2
Primary 小學	442.0	14.8	417.4	13.7	428.8	13.9
Secondary/Matriculation 中學/預科	1 040.1	34.8	1 078.3	35.4	1 088.0	35.3
Tertiary 專上教育						
- non-degree 非學位	126.7	4.2	135.7	4.5	132.0	4.3
- degree 學位	193.3	6.5	212.1	7.0	212.4	6.9
Sub-total 小計	1 849.9	61.9	1 879.7	61.7	1 899.3	61.6

**Table 3C (Cont'd.) Employed persons by Sex and Educational attainment**

**表 3C (續) 按性別及教育程度劃分的就業人數**

Sex/Educational attainment 性別/教育程度	1995 Q2 第二季		1996 Q1 第一季		1996 Q2 第二季	
	No. 人數 (‘000)	% 百分比	No. 人數 (‘000)	% 百分比	No. 人數 (‘000)	% 百分比
<b>Female</b> 女						
No schooling/Kindergarten 未受教育/幼稚園	43.0	1.4	33.2	1.1	35.5	1.2
Primary 小學	180.6	6.0	180.2	5.9	188.4	6.1
Secondary/Matriculation 中學/預科	679.4	22.7	696.0	22.8	699.3	22.7
Tertiary 專上教育						
- non-degree 非學位	127.1	4.3	136.9	4.5	135.5	4.4
- degree 學位	108.9	3.6	123.0	4.0	123.1	4.0
Sub-total 小計	1 139.1	38.1	1 169.3	38.3	1 181.7	38.4
<b>Overall</b> 合計						
No schooling/Kindergarten 未受教育/幼稚園	90.8	3.1	69.6	2.3	73.5	2.4
Primary 小學	622.6	20.8	597.5	19.6	617.2	20.0
Secondary/Matriculation 中學/預科	1 719.5	57.5	1 774.3	58.2	1 787.3	58.0
Tertiary 專上教育						
- non-degree 非學位	253.9	8.5	272.6	8.9	267.5	8.7
- degree 學位	302.2	10.1	335.0	11.0	335.5	10.9
Total 總計	2 989.0	100.0	3 049.0	100.0	3 081.1	100.0

Table 3D Employed persons by Industry (Detailed group)

表 3D 按行業(詳細組別)劃分的就業人數

Industry 行業	1995 Q2 第二季		1996 Q1 第一季		1996 Q2 第二季	
	No. 人數 (‘000)	% 百分比	No. 人數 (‘000)	% 百分比	No. 人數 (‘000)	% 百分比
	<b>Manufacturing</b> 製造業	<b>560.8</b>	<b>18.8</b>	<b>517.9</b>	<b>17.0</b>	<b>514.4</b>
Food and beverage 食品及飲品製造業	25.3	0.8	22.6	0.7	25.7	0.8
Clothing and footwear 服裝及鞋類製品業	191.2	6.4	172.9	5.7	169.4	5.5
Paper and printing 紙品製造及印刷業	71.1	2.4	69.7	2.3	67.8	2.2
Other manufacturing industries 其他產品製造業	273.2	9.1	252.6	8.3	251.5	8.2
<b>Construction</b> 建造業	<b>238.1</b>	<b>8.0</b>	<b>255.4</b>	<b>8.4</b>	<b>280.1</b>	<b>9.1</b>
Foundation and superstructure 地基及上蓋工程	161.1	5.4	178.4	5.9	194.5	6.3
Decoration and maintenance 裝修及保養工程	77.0	2.6	76.9	2.5	85.6	2.8
<b>Wholesale, retail and import/export trades, restaurants and hotels</b> 批發、零售、進出口貿易、飲食及酒店業	<b>837.7</b>	<b>28.0</b>	<b>887.8</b>	<b>29.1</b>	<b>887.1</b>	<b>28.8</b>
Wholesale/retail 批發/零售業	343.2	11.5	360.5	11.8	360.9	11.7
Import/export trades 進出口貿易業	265.3	8.9	273.9	9.0	281.0	9.1
Restaurants/hotels 飲食/酒店業	229.2	7.7	253.4	8.3	245.1	8.0
<b>Transport, storage and communication</b> 運輸、倉庫及通訊業	<b>342.5</b>	<b>11.4</b>	<b>337.5</b>	<b>11.1</b>	<b>344.8</b>	<b>11.2</b>
Transport 運輸業	295.1	9.9	290.3	9.5	295.5	9.6
Storage 倉庫業	7.0	0.2	3.7	0.1	4.6	0.2
Communication 通訊業	40.4	1.4	43.5	1.4	44.7	1.5

**Table 3D (Cont'd.) Employed persons by Industry (Detailed group)**

**表 3D (續) 按行業(詳細組別)劃分的就業人數**

Industry 行業	1995 Q2 第二季		1996 Q1 第一季		1996 Q2 第二季	
	No. 人數 (‘000)	% 百分比	No. 人數 (‘000)	% 百分比	No. 人數 (‘000)	% 百分比
	<b>Financing, insurance, real estate and business services</b> 金融、保險、地產及商用服務業	<u>349.9</u>	<u>11.7</u>	<u>348.6</u>	<u>11.4</u>	<u>364.2</u>
Financing 金融業	117.9	3.9	118.3	3.9	118.1	3.8
Insurance 保險業	26.1	0.9	25.4	0.8	27.9	0.9
Real estate and business services 地產及商用服務業	206.0	6.9	204.9	6.7	218.2	7.1
<b>Community, social and personal services</b> 社區、社會及個人服務業	<u>620.6</u>	<u>20.8</u>	<u>666.8</u>	<u>21.9</u>	<u>657.2</u>	<u>21.3</u>
Public administration 公共行政	105.5	3.5	128.6	4.2	121.9	4.0
Education, medical and other health and welfare services 教育、醫療、其他保健及福利服務業	233.5	7.8	252.6	8.3	253.7	8.2
Other services 其他服務行業	281.5	9.4	285.5	9.4	281.6	9.1
<b>Others</b> 其他	<u>39.5</u>	<u>1.3</u>	<u>34.9</u>	<u>1.1</u>	<u>33.3</u>	<u>1.1</u>
<b>Total</b> 總計	2 989.0	100.0	3 049.0	100.0	3 081.1	100.0

**Table 3E Employed persons by Sex and Industry****表 3E 按性別及行業劃分的就業人數**

Sex / Industry 性別/行業	1995 Q2 第二季		1996 Q1 第一季		1996 Q2 第二季	
	No. 人數 (‘000)	% 百分比	No. 人數 (‘000)	% 百分比	No. 人數 (‘000)	% 百分比
<b>Male</b> 男						
Manufacturing 製造業	356.4	11.9	334.5	11.0	<b>330.8</b>	<b>10.7</b>
Construction 建造業	226.4	7.6	241.0	7.9	<b>265.5</b>	<b>8.6</b>
Wholesale, retail and import/export trades, restaurants and hotels 批發、零售、進出口貿易、 飲食及酒店業	483.7	16.2	499.5	16.4	<b>496.5</b>	<b>16.1</b>
Transport, storage and communication 運輸、倉庫及通訊業	279.1	9.3	280.9	9.2	<b>282.1</b>	<b>9.2</b>
Financing, insurance, real estate and business services 金融、保險、地產及商用服務業	205.2	6.9	208.3	6.8	<b>216.7</b>	<b>7.0</b>
Community, social and personal services 社區、社會及個人服務業	266.7	8.9	286.9	9.4	<b>279.4</b>	<b>9.1</b>
Others 其他	32.5	1.1	28.7	0.9	<b>28.4</b>	<b>0.9</b>
<b>Sub-total</b> 小計	<b>1 849.9</b>	<b>61.9</b>	<b>1 879.7</b>	<b>61.7</b>	<b>1 899.3</b>	<b>61.6</b>

**Table 3E (Cont'd.) Employed persons by Sex and Industry**

**表 3E (續) 按性別及行業劃分的就業人數**

Sex / Industry 性別/行業	1995 Q2 第二季		1996 Q1 第一季		1996 Q2 第二季	
	No. 人數 (‘000)	% 百分比	No. 人數 (‘000)	% 百分比	No. 人數 (‘000)	% 百分比
<b>Female</b> 女						
Manufacturing 製造業	204.4	6.8	183.4	6.0	<b>183.6</b>	<b>6.0</b>
Construction 建造業	11.8	0.4	14.4	0.5	<b>14.6</b>	<b>0.5</b>
Wholesale, retail and import/export trades, restaurants and hotels 批發、零售、進出口貿易、 飲食及酒店業	354.0	11.8	388.3	12.7	<b>390.6</b>	<b>12.7</b>
Transport, storage and communication 運輸、倉庫及通訊業	63.4	2.1	56.6	1.9	<b>62.8</b>	<b>2.0</b>
Financing, insurance, real estate and business services 金融、保險、地產及商用服務業	144.8	4.8	140.3	4.6	<b>147.5</b>	<b>4.8</b>
Community, social and personal services 社區、社會及個人服務業	353.8	11.8	379.9	12.5	<b>377.8</b>	<b>12.3</b>
Others 其他	7.0	0.2	6.3	0.2	<b>4.9</b>	<b>0.2</b>
Sub-total 小計	1 139.1	38.1	1 169.3	38.3	<b>1 181.7</b>	<b>38.4</b>

**Table 3E (Cont'd.) Employed persons by Sex and Industry**

**表 3E (續) 按性別及行業劃分的就業人數**

Sex / Industry 性別/行業	1995 Q2 第二季		1996 Q1 第一季		1996 Q2 第二季	
	No. 人數 (‘000)	% 百分比	No. 人數 (‘000)	% 百分比	No. 人數 (‘000)	% 百分比
<b>Overall</b> 合計						
Manufacturing 製造業	560.8	18.8	517.9	17.0	514.4	16.7
Construction 建造業	238.1	8.0	255.4	8.4	280.1	9.1
Wholesale, retail and import/export trades, restaurants and hotels 批發、零售、進出口貿易、 飲食及酒店業	837.7	28.0	887.8	29.1	887.1	28.8
Transport, storage and communication 運輸、倉庫及通訊業	342.5	11.4	337.5	11.1	344.8	11.2
Financing, insurance, real estate and business services 金融、保險、地產及商用服務業	349.9	11.7	348.6	11.4	364.2	11.8
Community, social and personal services 社區、社會及個人服務業	620.6	20.8	666.8	21.9	657.2	21.3
Others 其他	39.5	1.3	34.9	1.1	33.3	1.1
<b>Total</b> 總計	<b>2 989.0</b>	<b>100.0</b>	<b>3 049.0</b>	<b>100.0</b>	<b>3 081.1</b>	<b>100.0</b>

**Table 3F Employed persons by Sex and Occupation****表 3F 按性別及職業劃分的就業人數**

Sex / Occupation 性別/職業	1995 Q2 第二季		1996 Q1 第一季		1996 Q2 第二季	
	No. 人數 (‘000)	% 百分比	No. 人數 (‘000)	% 百分比	No. 人數 (‘000)	% 百分比
<b>Male</b> 男						
Managers and administrators 經理及行政級人員	199.2	6.7	250.5	8.2	237.5	7.7
Professionals 專業人員	97.0	3.2	103.5	3.4	106.9	3.5
Associate professionals 輔助專業人員	247.4	8.3	240.6	7.9	246.0	8.0
Clerks 文員	166.9	5.6	163.7	5.4	168.2	5.5
Service workers and shop sales workers 服務工作及商店銷售人員	269.6	9.0	273.4	9.0	263.3	8.5
Craft and related workers 工藝及有關人員	346.9	11.6	334.0	11.0	351.6	11.4
Plant and machine operators and assemblers 機台及機器操作員及裝配員	264.0	8.8	255.0	8.4	251.0	8.1
Elementary occupations 非技術工人	250.0	8.4	249.8	8.2	267.2	8.7
Others 其他	9.0	0.3	9.3	0.3	7.6	0.2
Sub-total 小計	1 849.9	61.9	1 879.7	61.7	1 899.3	61.6

**Table 3F (Cont'd.) Employed persons by Sex and Occupation****表 3F (續) 按性別及職業劃分的就業人數**

Sex / Occupation 性別/職業	1995 Q2 第二季		1996 Q1 第一季		1996 Q2 第二季	
	No. 人數 (‘000)	% 百分比	No. 人數 (‘000)	% 百分比	No. 人數 (‘000)	% 百分比
<b>Female</b> <b>女</b>						
Managers and administrators 經理及行政級人員	47.3	1.6	57.6	1.9	54.3	1.8
Professionals 專業人員	49.2	1.6	49.5	1.6	49.7	1.6
Associate professionals 輔助專業人員	160.3	5.4	160.2	5.3	167.7	5.4
Clerks 文員	383.7	12.8	391.2	12.8	387.5	12.6
Service workers and shop sales workers 服務工作及商店銷售人員	146.4	4.9	168.1	5.5	164.8	5.3
Craft and related workers 工藝及有關人員	8.7	0.3	14.1	0.5	14.4	0.5
Plant and machine operators and assemblers 機台及機器操作員及裝配員	77.7	2.6	61.1	2.0	64.9	2.1
Elementary occupations 非技術工人	261.9	8.8	264.4	8.7	276.1	9.0
Others 其他	4.0 *	0.1 *	3.1 *	0.1 *	2.4	0.1
Sub-total 小計	1 139.1	38.1	1 169.3	38.3	1 181.7	38.4

**Table 3F (Cont'd.) Employed persons by Sex and Occupation**

表 3F (續) 按性別及職業劃分的就業人數

Sex / Occupation 性別/職業	1995 Q2 第二季		1996 Q1 第一季		1996 Q2 第二季	
	No. 人數 (‘000)	% 百分比	No. 人數 (‘000)	% 百分比	No. 人數 (‘000)	% 百分比
<b>Overall</b> 合計						
Managers and administrators 經理及行政級人員	246.5	8.3	308.1	10.1	<b>291.8</b>	<b>9.5</b>
Professionals 專業人員	146.1	4.9	152.9	5.0	<b>156.6</b>	<b>5.1</b>
Associate professionals 輔助專業人員	407.7	13.7	400.8	13.1	<b>413.7</b>	<b>13.4</b>
Clerks 文員	550.6	18.4	554.9	18.2	<b>555.7</b>	<b>18.0</b>
Service workers and shop sales workers 服務工作及商店銷售人員	416.0	13.9	441.5	14.5	<b>428.1</b>	<b>13.9</b>
Craft and related workers 工藝及有關人員	355.6	11.9	348.1	11.4	<b>366.0</b>	<b>11.9</b>
Plant and machine operators and assemblers 機台及機器操作員及裝配員	341.7	11.4	316.1	10.4	<b>315.9</b>	<b>10.3</b>
Elementary occupations 非技術工人	511.9	17.1	514.2	16.9	<b>543.3</b>	<b>17.6</b>
Others 其他	12.9	0.4	12.4	0.4	<b>10.0</b>	<b>0.3</b>
<b>Total</b> 總計	<b>2 989.0</b>	<b>100.0</b>	<b>3 049.0</b>	<b>100.0</b>	<b>3 081.1</b>	<b>100.0</b>

**Table 3G Employed persons by Industry and Age**

**表 3G 按行業及年齡劃分的就業人數**

Industry 行業	1996 Q2 第二季							
	Age group 年齡組別							
	15 - 29		30 - 49		≥ 50		Overall 合計	
No. 人數 (‘000)	% 百分比	No. 人數 (‘000)	% 百分比	No. 人數 (‘000)	% 百分比	No. 人數 (‘000)	% 百分比	
Manufacturing 製造業	119.6	13.6	307.5	17.4	87.4	20.2	514.4	16.7
Construction 建造業	56.1	6.4	182.8	10.3	41.1	9.5	280.1	9.1
Wholesale, retail and import/export trades, restaurants and hotels 批發、零售、進出口貿易、 飲食及酒店業	279.1	31.8	483.6	27.3	124.4	28.7	887.1	28.8
Transport, storage and communication 運輸、倉庫及通訊業	86.3	9.8	212.8	12.0	45.7	10.6	344.8	11.2
Financing, insurance, real estate and business services 金融、保險、地產及商用服務業	130.7	14.9	186.5	10.5	47.0	10.8	364.2	11.8
Community, social and personal services 社區、社會及個人服務業	199.5	22.8	376.1	21.2	81.6	18.8	657.2	21.3
Others 其他	5.5	0.6	21.7	1.2	6.1	1.4	33.3	1.1
Total 總計	876.9	100.0	1 770.9	100.0	433.2	100.0	3 081.1	100.0

**Table 3H Employed persons by Occupation and Age**

**表 3H 按職業及年齡劃分的就業人數**

Occupation 職業	1996 Q2 第二季							
	Age group 年齡組別							
	15 - 29		30 - 49		≥ 50		Overall 合計	
No. 人數 (‘000)	% 百分比	No. 人數 (‘000)	% 百分比	No. 人數 (‘000)	% 百分比	No. 人數 (‘000)	% 百分比	
Managers and administrators 經理及行政級人員	28.2	3.2	216.1	12.2	47.5	11.0	291.8	9.5
Professionals 專業人員	53.8	6.1	91.0	5.1	11.8	2.7	156.6	5.1
Associate professionals 輔助專業人員	151.7	17.3	232.8	13.1	29.1	6.7	413.7	13.4
Clerks 文員	260.2	29.7	265.7	15.0	29.8	6.9	555.7	18.0
Service workers and shop sales workers 服務工作及商店銷售人員	152.1	17.3	225.5	12.7	50.5	11.7	428.1	13.9
Craft and related workers 工藝及有關人員	88.9	10.1	226.0	12.8	51.1	11.8	366.0	11.9
Plant and machine operators and assemblers 機台及機器操作員及裝配員	45.6	5.2	216.9	12.2	53.4	12.3	315.9	10.3
Elementary occupations 非技術工人	95.1	10.8	291.1	16.4	157.1	36.3	543.3	17.6
Others 其他	1.3 *	0.1 *	5.8	0.3	2.9	0.7	10.0	0.3
Total 總計	876.9	100.0	1 770.9	100.0	433.2	100.0	3 081.1	100.0

**Table 3I Employed persons by Hours of work**  
**表 3I 按工作時數劃分的就業人數**

Hours of work 工作時數	1995 Q2 第二季		1996 Q1 第一季		1996 Q2 第二季	
	No. 人數 (‘000)	% 百分比	No. 人數 (‘000)	% 百分比	No. 人數 (‘000)	% 百分比
< 20	68.5	2.3	132.9	4.4	133.3	4.3
20 - 29	176.7	5.9	104.0	3.4	127.8	4.1
30 - 34	172.2	5.8	76.8	2.5	77.2	2.5
35 - 39	359.4	12.0	324.8	10.7	300.2	9.7
40 - 44	763.7	25.5	817.1	26.8	841.1	27.3
45 - 49	714.6	23.9	813.8	26.7	788.4	25.6
50 - 54	285.9	9.6	265.1	8.7	285.0	9.3
55 - 59	53.4	1.8	51.2	1.7	58.4	1.9
≥ 60	394.7	13.2	463.3	15.2	469.7	15.2
Total 總計	2 989.0	100.0	3 049.0	100.0	3 081.1	100.0

**Table 3J Employed persons by Monthly employment earnings****表 3J 按每月就業收入劃分的就業人數**

Monthly employment earnings (HK\$) 每月就業收入(港元)	1995		1996 <sup>(1)</sup>		1996	
	Q2 第二季		Q1 第一季		Q2 第二季	
	No. 人數 (‘000)	% 百分比	No. 人數 (‘000)	% 百分比	No. 人數 (‘000)	% 百分比
< 3,000	73.9	2.5	74.4	2.4	73.6	2.4
3,000 - 3,999	178.0	6.0	168.3	5.5	170.1	5.5
4,000 - 4,999	144.3	4.8	116.1	3.8	111.5	3.6
5,000 - 5,999	212.8	7.1	183.0	6.0	169.2	5.5
6,000 - 6,999	279.1	9.3	243.2	8.0	244.9	7.9
7,000 - 7,999	333.6	11.2	285.7	9.4	269.5	8.7
8,000 - 8,999	345.5	11.6	373.3	12.2	375.0	12.2
9,000 - 9,999	176.2	5.9	216.3	7.1	217.8	7.1
10,000 - 14,999	619.9	20.7	667.4	21.9	696.9	22.6
15,000 - 19,999	239.0	8.0	282.0	9.2	297.7	9.7
20,000 - 29,999	223.1	7.5	240.1	7.9	247.0	8.0
≥ 30,000	163.8	5.5	199.2	6.5	208.1	6.8
<b>Total</b> 總計	<b>2 989.0</b>	<b>100.0</b>	<b>3 049.0</b>	<b>100.0</b>	<b>3 081.1</b>	<b>100.0</b>
<b>Median (HK\$)</b> 中位數(港元)	<b>8,500</b>		<b>9,000</b>		<b>9,000</b>	

Note : (1) Earnings exclude Chinese New Year bonus/double pay.

註釋：(1) 收入不包括農曆年花紅/雙糧。

**Table 4 Median hours of work of employed persons by Industry****表 4 按行業劃分的就業人士工作時數中位數**

Industry 行業	1995 Q2 第二季 Hours 時數	1996 Q1 第一季 Hours 時數	1996 Q2 第二季 Hours 時數
Manufacturing 製造業	44	48	48
Construction 建造業	42	45	48
Wholesale, retail and import/export trades, restaurants and hotels 批發、零售、進出口貿易、 飲食及酒店業	48	48	48
Transport, storage and communication 運輸、倉庫及通訊業	48	48	48
Financing, insurance, real estate and business services 金融、保險、地產及商用服務業	40	44	44
Community, social and personal services 社區、社會及個人服務業	46	45	45
Others 其他	44	44	44
Overall 合計	44	45	45

**Table 5A Median monthly employment earnings  
by Industry of main employment**

**表 5A 按主業所屬行業劃分的每月就業收入中位數**

Industry of main employment 主業所屬行業	1995 Q2 第二季 (HK\$) (港元)	1996 <sup>(1)</sup> Q1 第一季 (HK\$) (港元)	1996 Q2 第二季 (HK\$) (港元)
Manufacturing 製造業	8,000	8,500	8,500
Construction 建造業	8,100	9,000	9,500
Wholesale, retail and import/export trades, restaurants and hotels 批發、零售、進出口貿易、 飲食及酒店業	8,000	8,500	8,600
Transport, storage and communication 運輸、倉庫及通訊業	9,000	9,500	10,000
Financing, insurance, real estate and business services 金融、保險、地產及商用服務業	10,000	11,000	11,000
Community, social and personal services 社區、社會及個人服務業	8,000	9,000	9,000
Others 其他	9,000	10,000	10,500
Overall 合計	8,500	9,000	9,000

Note : (1) Earnings exclude Chinese New Year bonus/double pay.

註釋：(1) 收入不包括農曆年花紅/雙糧。

**Table 5B Median monthly employment earnings  
by Occupation of main employment**

**表 5B 按主業所屬職業劃分的每月就業收入中位數**

Occupation of main employment 主業所屬職業	1995 Q2 第二季 (HK\$) (港元)	1996 <sup>(1)</sup> Q1 第一季 (HK\$) (港元)	1996 Q2 第二季 (HK\$) (港元)
Managers and administrators 經理及行政級人員	20,000	20,000	<b>20,000</b>
Professionals 專業人員	25,000	22,000	<b>23,000</b>
Associate professionals 輔助專業人員	13,000	13,000	<b>14,000</b>
Clerks 文員	8,000	8,500	<b>8,700</b>
Service workers and shop sales workers 服務工作及商店銷售人員	8,000	8,000	<b>8,000</b>
Craft and related workers 工藝及有關人員	8,000	9,000	<b>9,000</b>
Plant and machine operators and assemblers 機台及機器操作員及裝配員	8,000	8,500	<b>8,500</b>
Elementary occupations 非技術工人	5,000	5,300	<b>5,500</b>
Others 其他	5,000	5,300	<b>5,500</b>
Overall 合計	8,500	9,000	<b>9,000</b>

Note : (1) Earnings exclude Chinese New Year bonus/double pay.

註釋：(1) 收入不包括農曆年花紅/雙糧。

**Table 6 Employed persons who worked less than 35 hours by Reason for working less than 35 hours during the seven days before enumeration**

**表 6 按在統計前七天內工作少於三十五小時的原因劃分的工作少於三十五小時的就業人數**

Reason for working less than 35 hours 工作少於三十五小時的原因	1995		1996		1996	
	Q2		Q1		Q2	
	No.	%	No.	%	No.	%
	人 數	百 分 比	人 數	百 分 比	人 數	百 分 比
	('000)		('000)		('000)	
On vacation / holiday 休假	270.2	64.7	178.1	56.8	196.9	58.2
Slack work 開工不足	60.9	14.6	53.5	17.1	49.0	14.5
Too busy with housework, schoolwork, personal business, etc. 忙於家務、學業、私人事務等	41.8	10.0	40.1	12.8	46.7	13.8
Full-time work less than 35 hours per week <sup>@</sup> 全職工作每星期工作時數 少於三十五小時 <sup>@</sup>	18.4	4.4	16.1	5.1	16.0	4.7
Chronic disease, disablement, old age, partially retired 長期患病、傷殘、 年老、半退休	9.3	2.2	7.3	2.3	10.3	3.0
Other reasons 其他原因	16.9	4.1	18.5	5.9	19.5	5.8
Total 總計	417.5	100.0	313.7	100.0	338.3	100.0

Note : @ This category refers to full-time workers who were scheduled to work less than 35 hours during the seven days before enumeration, and full-time workers who worked in those industries / occupations which had standard hours of work of less than 35 hours.

註釋 : @ 這類別是指那些被安排在統計前七天內工作少於三十五小時的全職工作人士，及那些任職於每星期標準工作時數少於三十五小時的行業/職業的全職工作人士。

**Table 7A Unemployed persons by Sex and Age**

**表 7A 按性別及年齡劃分的失業人數**

Sex/Age group 性別/年齡組別	1995 Q2 第二季		1996 Q1 第一季		1996 Q2 第二季	
	No. 人數 (‘000)	Rate@ 比率 (%)	No. 人數 (‘000)	Rate@ 比率 (%)	No. 人數 (‘000)	Rate@ 比率 (%)
<b>Male</b>						
男						
15 - 19	4.6	10.5	6.4	12.9	5.6	13.2
20 - 29	18.3	4.4	18.5	4.4	19.9	4.7
30 - 39	15.7	2.5	17.2	2.7	16.2	2.5
40 - 49	13.4	2.9	14.5	3.0	12.0	2.4
50 - 59	7.6	3.2	9.1	3.9	8.0	3.4
≥ 60	1.6 *	1.5 *	1.3 *	1.2 *	1.5	1.4
Overall 合計	61.2	3.2	66.9	3.4	63.2	3.2
<b>Female</b>						
女						
15 - 19	2.8	8.3	4.0	10.3	3.6	10.5
20 - 29	11.7	2.8	12.2	2.9	12.5	3.0
30 - 39	6.0	1.5	5.8	1.4	7.6	1.8
40 - 49	6.7	3.0	3.7	1.6	4.6	1.9
50 - 59	2.0 *	2.6 *	1.4 *	1.8 *	1.0 *	1.4 *
≥ 60	0.2 *	1.0 *	0.1 *	0.4 *	0.1 *	0.3 *
Overall 合計	29.5	2.5	27.2	2.3	29.4	2.4
<b>Overall</b>						
合計						
15 - 19	7.4	9.5	10.4	11.8	9.2	12.0
20 - 29	30.0	3.6	30.7	3.7	32.5	3.9
30 - 39	21.7	2.1	23.0	2.2	23.8	2.2
40 - 49	20.1	2.9	18.1	2.5	16.6	2.2
50 - 59	9.6	3.1	10.5	3.4	9.1	2.9
≥ 60	1.9 *	1.4 *	1.4 *	1.1 *	1.5	1.2
Overall 合計	90.6	2.9	94.1	3.0	92.6	2.9

Note : @ Unemployment rate in respect of the specified sex/age group.

註釋 : @ 在某一特定的性別/年齡組別的失業率。

**Table 7B Unemployed persons by Sex and Educational attainment**

**表 7B 按性別及教育程度劃分的失業人數**

Sex/Educational attainment 性別/教育程度	1995 Q2 第二季		1996 Q1 第一季		1996 Q2 第二季	
	No. 人數 (‘000)	Rate@ 比率 (%)	No. 人數 (‘000)	Rate@ 比率 (%)	No. 人數 (‘000)	Rate@ 比率 (%)
<b>Male</b> 男						
No schooling/Kindergarten 未受教育/幼稚園	2.9	5.7	1.3 *	3.5 *	1.1 *	2.7 *
Primary 小學	15.5	3.4	18.8	4.3	16.6	3.7
Secondary/Matriculation 中學/預科	36.7	3.4	42.0	3.7	39.0	3.5
Tertiary 專上教育						
- non-degree 非學位	3.0	2.3	2.1	1.6	2.5	1.9
- degree 學位	3.1	1.6	2.6	1.2	4.0	1.9
Overall 合計	61.2	3.2	66.9	3.4	63.2	3.2
<b>Female</b> 女						
No schooling/Kindergarten 未受教育/幼稚園	0.6 *	1.3 *	0.4 *	1.3 *	0.4 *	1.1 *
Primary 小學	6.5	3.5	5.0	2.7	4.4	2.3
Secondary/Matriculation 中學/預科	18.5	2.7	18.1	2.5	21.0	2.9
Tertiary 專上教育						
- non-degree 非學位	1.8 *	1.4 *	1.7	1.2	1.7	1.2
- degree 學位	2.0 *	1.8 *	2.0	1.6	2.0	1.6
Overall 合計	29.5	2.5	27.2	2.3	29.4	2.4

**Table 7B (Cont'd.) Unemployed persons by Sex and Educational attainment**

表 7B (續) 按性別及教育程度劃分的失業人數

Sex/Educational attainment 性別/教育程度	1995 Q2 第二季		1996 Q1 第一季		1996 Q2 第二季	
	No. 人數 (‘000)	Rate <sup>@</sup> 比率 (%)	No. 人數 (‘000)	Rate <sup>@</sup> 比率 (%)	No. 人數 (‘000)	Rate <sup>@</sup> 比率 (%)
Overall 合計						
No schooling/Kindergarten 未受教育/幼稚園	3.5 *	3.7 *	1.8	2.5	1.5	2.0
Primary 小學	22.0	3.4	23.8	3.8	21.0	3.3
Secondary/Matriculation 中學/預科	55.2	3.1	60.1	3.3	59.9	3.2
Tertiary 專上教育						
- non-degree 非學位	4.8	1.9	3.9	1.4	4.2	1.5
- degree 學位	5.1	1.7	4.6	1.4	6.0	1.8
Overall 合計	90.6	2.9	94.1	3.0	92.6	2.9

Note : @ Unemployment rate in respect of the specified sex/educational attainment group.

註釋 : @ 在某一特定的性別/教育程度組別的失業率。

**Table 7C Unemployed persons by Duration of unemployment**  
**表 7C 按持續失業期間劃分的失業人數**

Duration of unemployment (Months) 持續失業期間 (月)	1995 Q2 第二季		1996 Q1 第一季		1996 Q2 第二季	
	No. 人數 ( <sup>'000</sup> )	% 百分比	No. 人數 ( <sup>'000</sup> )	% 百分比	No. 人數 ( <sup>'000</sup> )	% 百分比
< 1	20.6	22.7	21.9	23.2	22.7	24.5
1 - < 2	19.1	21.1	16.5	17.6	19.7	21.2
2 - < 3	13.5	14.9	16.9	18.0	15.0	16.1
3 - < 6	20.0	22.0	19.6	20.8	17.9	19.3
≥ 6	17.5	19.3	19.2	20.4	17.4	18.8
Total 總計	90.6	100.0	94.1	100.0	92.6	100.0
Median (Days) 中位數 (日)	74		76		69	

**Table 8A Unemployed persons with a previous job  
by Previous industry (Detailed group)**

**表 8A 按以前從事的行業(詳細組別)劃分的  
曾工作的失業人數**

Previous industry 以前從事的行業	1996 Q1 第一季		1996 Q2 第二季	
	No. 人數 (‘000)	Rate <sup>#</sup> 比率 (%)	No. 人數 (‘000)	Rate <sup>#</sup> 比率 (%)
<b>Manufacturing</b> 製造業	<b>21.9</b>	<b>4.1</b>	<b>21.2</b>	<b>4.0</b>
Food and beverage 食品及飲品製造業	0.8 *	3.4 *	0.5 *	2.0 *
Clothing and footwear 服裝及鞋類製品業	9.6	5.2	9.2	5.2
Paper and printing 紙品製造及印刷業	2.3	3.2	1.8	2.6
Other manufacturing industries 其他產品製造業	9.3	3.5	9.7	3.7
<b>Construction</b> 建造業	<b>16.0</b>	<b>5.9</b>	<b>10.1</b>	<b>3.5</b>
Foundation and superstructure 地基及上蓋工程	9.2	4.9	6.3	3.1
Decoration and maintenance 裝修及保養工程	6.8	8.1	3.9	4.3
<b>Wholesale, retail and import/export trades, restaurants and hotels</b> 批發、零售、進出口貿易、飲食及酒店業	<b>26.3</b>	<b>2.9</b>	<b>30.1</b>	<b>3.3</b>
Wholesale/retail 批發/零售業	10.7	2.9	13.6	3.6
Import/export trades 進出口貿易業	5.5	2.0	5.4	1.9
Restaurants/hotels 飲食/酒店業	10.0	3.8	11.0	4.3
<b>Transport, storage and communication</b> 運輸、倉庫及通訊業	<b>8.7</b>	<b>2.5</b>	<b>10.6</b>	<b>3.0</b>
Transport 運輸業	8.1	2.7	8.6	2.8
Storage 倉庫業	0.2 *	5.9 *	0.3 *	6.3 *
Communication 通訊業	0.4 *	1.0 *	1.7	3.6

**Table 8A (Cont'd.) Unemployed persons with a previous job  
by Previous industry (Detailed group)**

表 8A (續) 按以前從事的行業(詳細組別)劃分的  
曾工作的失業人數

Previous industry 以前從事的行業	1996 Q1 第一季		1996 Q2 第二季	
	No. 人數 ('000)	Rate <sup>#</sup> 比率 (%)	No. 人數 ('000)	Rate <sup>#</sup> 比率 (%)
Financing, insurance, real estate and business services 金融、保險、地產及商用服務業	<u>4.9</u>	<u>1.4</u>	<u>5.8</u>	<u>1.6</u>
Financing 金融業	1.2 *	1.0 *	1.5 *	1.2 *
Insurance 保險業	0.2 *	0.9 *	0.2 *	0.9 *
Real estate and business services 地產及商用服務業	3.5	1.7	4.1	1.9
Community, social and personal services 社區、社會及個人服務業	<u>9.3</u>	<u>1.4</u>	<u>7.8</u>	<u>1.2</u>
Public administration 公共行政	0.3 *	0.2 *	0.4 *	0.3 *
Education, medical and other health and welfare services 教育、醫療、其他保健及福利服務業	2.0	0.8	2.3	0.9
Other services 其他服務行業	7.0	2.4	5.1	1.8
Others 其他	<u>0</u>	<u>0</u>	<u>0</u>	<u>0</u>
Overall <sup>@</sup> 合計 <sup>@</sup>	94.1	3.0	92.6	2.9

Notes : @ Covering all unemployed persons, including first-time job-seekers and re-entrants into the labour force.

# For technical details of unemployment rates by previous industry, please see definition of Unemployment Rate in Part III.

註釋 : @ 涵蓋所有失業人士，包括首次求職人士及重新加入勞動人口的失業人士。

# 有關計算按以前從事的行業劃分的失業率的技術性詳情，請參閱第三部內「失業率」的定義。

**Table 8B Unemployed persons with a previous job<sup>@</sup>  
by Sex and Previous industry**

**表 8B 按性別及以前從事的行業劃分的  
曾工作的失業人數<sup>@</sup>**

Sex / Previous industry 性別/以前從事的行業	1995 Q2 第二季		1996 Q1 第一季		1996 Q2 第二季	
	No. 人數 (‘000)	% 百分比	No. 人數 (‘000)	% 百分比	No. 人數 (‘000)	% 百分比
<b>Male</b> 男						
Manufacturing 製造業	12.9	15.5	14.3	16.4	13.9	16.2
Construction 建造業	15.3	18.4	15.6	17.9	9.9	11.5
Wholesale, retail and import/export trades, restaurants and hotels 批發、零售、進出口貿易、 飲食及酒店業	15.2	18.2	16.4	18.9	18.8	21.9
Transport, storage and communication 運輸、倉庫及通訊業			8.0	9.2	8.9	10.4
Financing, insurance, real estate and business services 金融、保險、地產及商用服務業	14.1	17.0	4.0	4.6	3.8	4.4
Community, social and personal services 社區、社會及個人服務業			5.8	6.6	4.3	5.1
Others 其他	0.1 *	0.2 *	0	0	0	0
Sub-total 小計	57.7	69.2	64.1	73.5	59.6	69.6

**Table 8B (Cont'd.) Unemployed persons with a previous job<sup>@</sup>  
by Sex and Previous industry**

表 8B (續) 按性別及以前從事的行業劃分的  
曾工作的失業人數<sup>@</sup>

Sex / Previous industry 性別/以前從事的行業	1995 Q2 第二季		1996 Q1 第一季		1996 Q2 第二季	
	No. 人數 (‘000)	% 百分比	No. 人數 (‘000)	% 百分比	No. 人數 (‘000)	% 百分比
<b>Female</b> 女						
Manufacturing 製造業	7.9	9.5	7.6	8.8	7.3	8.5
Construction 建造業	0.3 *	0.3 *	0.4 *	0.5 *	0.3 *	0.3 *
Wholesale, retail and import/export trades, restaurants and hotels 批發、零售、進出口貿易、 飲食及酒店業	11.0	13.1	9.8	11.3	11.3	13.2
Transport, storage and communication 運輸、倉庫及通訊業			0.7 *	0.9 *	1.7	2.0
Financing, insurance, real estate and business services 金融、保險、地產及商用服務業	6.4	7.7	0.9 *	1.0 *	2.1	2.4
Community, social and personal services 社區、社會及個人服務業			3.5	4.1	3.4	4.0
Others 其他	0.2 *	0.2 *	0	0	0	0
Sub-total 小計	25.7	30.8	23.1	26.5	26.1	30.4

**Table 8B (Cont'd.) Unemployed persons with a previous job<sup>@</sup>  
by Sex and Previous industry**

表 8B (續) 按性別及以前從事的行業劃分的  
曾工作的失業人數<sup>@</sup>

Sex / Previous industry 性別/以前從事的行業	1995 Q2 第二季		1996 Q1 第一季		1996 Q2 第二季	
	No. 人數 (‘000)	% 百分比	No. 人數 (‘000)	% 百分比	No. 人數 (‘000)	% 百分比
Overall 合計						
Manufacturing 製造業	20.8	25.0	21.9	25.1	21.2	24.8
Construction 建造業	15.6	18.7	16.0	18.4	10.1	11.8
Wholesale, retail and import/export trades, restaurants and hotels 批發、零售、進出口貿易、 飲食及酒店業	26.1	31.3	26.3	30.1	30.1	35.1
Transport, storage and communication 運輸、倉庫及通訊業			8.7	10.0	10.6	12.4
Financing, insurance, real estate and business services 金融、保險、地產及商用服務業	20.6	24.6	4.9	5.6	5.8	6.8
Community, social and personal services 社區、社會及個人服務業			9.3	10.7	7.8	9.1
Others 其他	0.3 *	0.4 *	0	0	0	0
Total 總計	83.4	100.0	87.1	100.0	85.7	100.0

Note : @ Not including re-entrants into the labour force for whom information on previous industry is not available.

註釋 : @ 不包括重新加入勞動人口的失業人士，因為沒有關於他們以前從事行業的資料。

**Table 8C Unemployed persons with a previous job<sup>@</sup>  
by Sex and Previous occupation**

**表 8C 按性別及以前從事的職業劃分的  
曾工作的失業人數<sup>@</sup>**

Sex / Previous occupation 性別/以前從事的職業	1995 Q2 第二季		1996 Q1 第一季		1996 Q2 第二季	
	No. 人數 ( '000)	% 百分比	No. 人數 ( '000)	% 百分比	No. 人數 ( '000)	% 百分比
<b>Male</b> 男						
Managers and administrators 經理及行政級人員			2.4	2.7	2.3	2.6
Professionals 專業人員	7.5	9.0	0.6 *	0.6 *	0.8 *	0.9 *
Associate professionals 輔助專業人員			5.6	6.5	6.2	7.2
Clerks 文員	2.8	3.4	4.3	4.9	3.7	4.3
Service workers and shop sales workers 服務工作及商店銷售人員	11.0	13.1	10.7	12.3	12.6	14.8
Craft and related workers 工藝及有關人員	18.0	21.5	20.5	23.5	13.5	15.8
Plant and machine operators and assemblers 機台及機器操作員及裝配員	6.6	7.9	8.1	9.3	7.7	9.0
Elementary occupations 非技術工人	11.8	14.2	12.0	13.7	12.8	15.0
Others 其他			0	0	0	0
<b>Sub-total</b> 小計	57.7	69.2	64.1	73.5	59.6	69.6

**Table 8C (Cont'd.) Unemployed persons with a previous job<sup>@</sup>  
by Sex and Previous occupation**

表 8C (續) 按性別及以前從事的職業劃分的  
曾工作的失業人數<sup>@</sup>

Sex / Previous occupation 性別/以前從事的職業	1995 Q2 第二季		1996 Q1 第一季		1996 Q2 第二季	
	No. 人數 ( '000)	% 百分比	No. 人數 ( '000)	% 百分比	No. 人數 ( '000)	% 百分比
<b>Female</b> 女						
Managers and administrators ) 經理及行政級人員 )			0.5 *	0.6 *	0.9 *	1.1 *
Professionals ) 專業人員 )	2.6	3.1	0.2 *	0.3 *	0.5 *	0.6 *
Associate professionals ) 輔助專業人員 )			2.0	2.3	2.5	2.9
Clerks 文員	9.2	11.0	6.9	7.9	8.8	10.2
Service workers and shop sales workers 服務工作及商店銷售人員	6.0	7.1	6.4	7.3	6.4	7.5
Craft and related workers 工藝及有關人員	0.3 *	0.4 *	0.7 *	0.7 *	0.3 *	0.4 *
Plant and machine operators and assemblers 機台及機器操作員及裝配員	4.2	5.0	4.2	4.8	4.0	4.7
Elementary occupations ) 非技術工人 )	3.5	4.2	2.3	2.7	2.7	3.1
Others ) 其他 )			0	0	0	0
<b>Sub-total</b> 小計	25.7	30.8	23.1	26.5	26.1	30.4

**Table 8C (Cont'd.) Unemployed persons with a previous job<sup>@</sup>  
by Sex and Previous occupation**

表 8C (續) 按性別及以前從事的職業劃分的  
曾工作的失業人數<sup>@</sup>

Sex / Previous occupation 性別/以前從事的職業	1995 Q2 第二季		1996 Q1 第一季		1996 Q2 第二季	
	No. 人數 (‘000)	% 百分比	No. 人數 (‘000)	% 百分比	No. 人數 (‘000)	% 百分比
Overall 合計						
Managers and administrators ) 經理及行政級人員 )			2.9	3.3	3.2	3.7
Professionals ) 專業人員 )	10.1	12.1	0.8 *	0.9 *	1.3 *	1.5 *
Associate professionals ) 輔助專業人員 )			7.6	8.7	8.7	10.1
Clerks 文員	12.0	14.4	11.1	12.8	12.4	14.5
Service workers and shop sales workers 服務工作及商店銷售人員	16.9	20.3	17.1	19.6	19.0	22.2
Craft and related workers 工藝及有關人員	18.3	21.9	21.1	24.2	13.9	16.2
Plant and machine operators and assemblers 機台及機器操作員及裝配員	10.8	12.9	12.3	14.1	11.7	13.7
Elementary occupations ) 非技術工人 )	15.4	18.4	14.3	16.4	15.5	18.1
Others ) 其他 )			0	0	0	0
Total 總計	83.4	100.0	87.1	100.0	85.7	100.0

Note : @ Not including re-entrants into the labour force for whom information on previous occupation is not available.  
註釋 : @ 不包括重新加入勞動人口的失業人士，因為沒有關於他們以前從事職業的資料。

**Table 8D Unemployed persons with a previous job<sup>@</sup>  
by Previous industry and Age**  
表 8D 按以前從事的行業及年齡劃分的  
曾工作的失業人數<sup>@</sup>

Previous industry 以前從事的行業	1996 Q2 第二季							
	Age group 年齡組別							
	15 - 29		30 - 49		≥ 50		Overall 合計	
	No. 人數 (‘000)	% 百分比	No. 人數 (‘000)	% 百分比	No. 人數 (‘000)	% 百分比	No. 人數 (‘000)	% 百分比
Manufacturing 製造業	5.7	16.2	11.7	29.5	3.8	35.6	21.2	24.8
Construction 建造業	3.0	8.3	4.9	12.4	2.3	21.3	10.1	11.8
Wholesale, retail and import/export trades, restaurants and hotels 批發、零售、進出口貿易、 飲食及酒店業	15.7	44.4	11.9	30.0	2.5	23.5	30.1	35.1
Transport, storage and communication 運輸、倉庫及通訊業	4.9	13.9	4.8	12.2	0.9 *	8.1 *	10.6	12.4
Financing, insurance, real estate and business services 金融、保險、地產及商用服務業	2.3	6.4	2.9	7.4	0.6 *	6.1 *	5.8	6.8
Community, social and personal services 社區、社會及個人服務業	3.8	10.9	3.4	8.5	0.6 *	5.3 *	7.8	9.1
Others 其他	0	0	0	0	0	0	0	0
Total 總計	35.4	100.0	39.7	100.0	10.6	100.0	85.7	100.0

Note : @ Not including re-entrants into the labour force for whom information on previous industry is not available.

註釋 : @ 不包括重新加入勞動人口的失業人士，因為沒有關於他們以前從事行業的資料。

**Table 8E Unemployed persons with a previous job<sup>@</sup>  
by Previous occupation and Age**

**表 8E 按以前從事的職業及年齡劃分的  
曾工作的失業人數<sup>@</sup>**

Previous occupation 以前從事的職業	1996 Q2 第二季							
	Age group 年齡組別							
	15 - 29		30 - 49		≥ 50		Overall 合計	
No. 人數 (‘000)	% 百分比	No. 人數 (‘000)	% 百分比	No. 人數 (‘000)	% 百分比	No. 人數 (‘000)	% 百分比	
Managers and administrators 經理及行政級人員	0.3 *	1.0 *	2.2	5.6	0.6 *	5.7 *	3.2	3.7
Professionals 專業人員	0.7 *	2.0 *	0.6 *	1.5 *	0	0	1.3 *	1.5 *
Associate professionals 輔助專業人員	4.0	11.3	4.4	11.1	0.3 *	2.5 *	8.7	10.1
Clerks 文員	8.5	24.1	3.4	8.5	0.5 *	4.9 *	12.4	14.5
Service workers and shop sales workers 服務工作及商店銷售人員	9.7	27.4	7.5	19.0	1.8	17.1	19.0	22.2
Craft and related workers 工藝及有關人員	4.7	13.2	6.9	17.5	2.3	21.4	13.9	16.2
Plant and machine operators and assemblers 機台及機器操作員及裝配員	2.0	5.5	7.7	19.3	2.1	19.7	11.7	13.7
Elementary occupations 非技術工人	5.5	15.5	6.9	17.5	3.0	28.8	15.5	18.1
Others 其他	0	0	0	0	0	0	0	0
Total 總計	35.4	100.0	39.7	100.0	10.6	100.0	85.7	100.0

Note : @ Not including re-entrants into the labour force for whom information on previous occupation is not available.

註釋 : @ 不包括重新加入勞動人口的失業人士，因為沒有關於他們以前從事職業的資料。

**Table 8F Unemployed persons with a previous job<sup>@</sup>  
by Previous industry and Mode of leaving last job**

**表 8F 按以前從事的行業及離職方式劃分的  
曾工作的失業人數<sup>@</sup>**

Previous industry / Mode of leaving last job 以前從事的行業/離職方式	1995 Q2 第二季		1996 Q1 第一季		1996 Q2 第二季	
	No. 人數 (‘000)	% 百分比	No. 人數 (‘000)	% 百分比	No. 人數 (‘000)	% 百分比
<b>Manufacturing</b> 製造業						
Dismissed or laid off 遭解僱或遣散	13.0	15.5	18.0	20.6	16.0	18.7
Leaving job on own accord 主動離職						
- Dissatisfied with job 對工作不滿	5.7	6.9	2.7	3.1	3.8	4.5
- Others 其他	2.1 *	2.6 *	1.3 *	1.5 *	1.4	1.6
Sub-total 小計	20.8	25.0	21.9	25.1	21.2	24.8
<b>Construction</b> 建造業						
Dismissed or laid off 遭解僱或遣散	12.3	14.8	14.8	17.0	8.9	10.4
Leaving job on own accord 主動離職						
- Dissatisfied with job 對工作不滿	2.4 *	2.8 *	0.6 *	0.6 *	0.8 *	1.0 *
- Others 其他	0.9 *	1.1 *	0.7 *	0.8 *	0.4 *	0.5 *
Sub-total 小計	15.6	18.7	16.0	18.4	10.1	11.8
<b>Wholesale, retail and import/export trades, restaurants and hotels</b> 批發、零售、進出口貿易、飲食及酒店業						
Dismissed or laid off 遭解僱或遣散	10.1	12.1	15.0	17.2	14.5	16.9
Leaving job on own accord 主動離職						
- Dissatisfied with job 對工作不滿	12.7	15.2	9.3	10.6	12.3	14.4
- Others 其他	3.3	4.0	2.0	2.3	3.3	3.8
Sub-total 小計	26.1	31.3	26.3	30.1	30.1	35.1

**Table 8F (Cont'd.) Unemployed persons with a previous job<sup>@</sup>  
by Previous industry and Mode of leaving last job**

表 8F (續) 按以前從事的行業及離職方式劃分的  
曾工作的失業人數<sup>@</sup>

Previous industry / Mode of leaving last job 以前從事的行業/離職方式	1995 Q2 第二季		1996 Q1 第一季		1996 Q2 第二季	
	No. 人數 (‘000)	% 百分比	No. 人數 (‘000)	% 百分比	No. 人數 (‘000)	% 百分比
<b>Transport, storage and communication</b> 運輸、倉庫及通訊業						
Dismissed or laid off 遭解僱或遣散	3.1	3.8	5.0	5.8	6.5	7.5
Leaving job on own accord 主動離職						
- Dissatisfied with job 對工作不滿	4.1	4.9	2.7	3.1	3.6	4.2
- Others 其他	0.9 *	1.1 *	1.0 *	1.1 *	0.6 *	0.7 *
Sub-total 小計	8.1	9.8	8.7	10.0	10.6	12.4
<b>Financing, insurance, real estate and business services</b> 金融、保險、地產及商用服務業						
Dismissed or laid off 遭解僱或遣散	1.0 *	1.2 *	2.4	2.7	2.5	2.9
Leaving job on own accord 主動離職						
- Dissatisfied with job 對工作不滿	3.4	4.1	2.1	2.4	2.4	2.8
- Others 其他	0.6 *	0.8 *	0.5 *	0.5 *	1.0 *	1.1 *
Sub-total 小計	5.0	6.0	4.9	5.6	5.8	6.8
<b>Community, social and personal services</b> 社區、社會及個人服務業						
Dismissed or laid off 遭解僱或遣散	3.3	4.0	4.5	5.2	3.3	3.9
Leaving job on own accord 主動離職						
- Dissatisfied with job 對工作不滿	3.9	4.7	3.6	4.1	3.3	3.8
- Others 其他	0.2 *	0.2 *	1.2 *	1.4 *	1.2 *	1.4 *
Sub-total 小計	7.4	8.9	9.3	10.7	7.8	9.1

**Table 8F (Cont'd.) Unemployed persons with a previous job<sup>@</sup>  
by Previous industry and Mode of leaving last job**

**表 8F (續) 按以前從事的行業及離職方式劃分的  
曾工作的失業人數<sup>@</sup>**

Previous industry / Mode of leaving last job 以前從事的行業/離職方式	1995 Q2 第二季		1996 Q1 第一季		1996 Q2 第二季	
	No. 人數 (‘000)	% 百分比	No. 人數 (‘000)	% 百分比	No. 人數 (‘000)	% 百分比
<b>Others</b> 其他						
Dismissed or laid off 遭解僱或遣散	0.1 *	0.2 *	0	0	0	0
Leaving job on own accord 主動離職						
- Dissatisfied with job 對工作不滿	0.2 *	0.2 *	0	0	0	0
- Others 其他	0	0	0	0	0	0
Sub-total 小計	0.3 *	0.4 *	0	0	0	0
<b>Overall</b> 合計						
Dismissed or laid off 遭解僱或遣散	43.0	51.5	59.7	68.6	51.6	60.3
Leaving job on own accord 主動離職						
- Dissatisfied with job 對工作不滿	32.4	38.8	20.9	23.9	26.2	30.6
- Others 其他	8.1	9.7	6.5	7.5	7.8	9.2
Total 總計	83.4	100.0	87.1	100.0	85.7	100.0

Note : @ Not including re-entrants into the labour force for whom information on previous industry is not available.  
註釋 : @ 不包括重新加入勞動人口的失業人士，因為沒有關於他們以前從事行業的資料。

**Table 9 Median duration of unemployment by Previous industry****表 9 按以前從事的行業劃分的持續失業期間中位數**

Previous industry 以前從事的行業	1995 Q2 第二季 Days 日數	1996 Q1 第一季 Days 日數	1996 Q2 第二季 Days 日數
Manufacturing 製造業	84	106	96
Construction 建造業	69	49	66
Wholesale, retail and import/export trades, restaurants and hotels 批發、零售、進出口貿易、飲食及酒店業	75	74	62
Transport, storage and communication 運輸、倉庫及通訊業	78	94	62
Financing, insurance, real estate and business services 金融、保險、地產及商用服務業	46	71	59
Community, social and personal services 社區、社會及個人服務業	69	58	57
Overall <sup>@</sup> 合計 <sup>@</sup>	74	76	69

Note : @ Covering all unemployed persons, including first-time job-seekers and re-entrants into the labour force.

註釋 : @ 涵蓋所有失業人士，包括首次求職人士及重新加入勞動人口的失業人士。

**Table 10A Job-seekers by Main action taken to seek work****表 10A 按尋找工作的主要方法劃分的求職人數**

Main action taken to seek work 尋找工作的主要方法	1995		1996		1996	
	Q2		Q1		Q2	
	No. 人數 (‘000)	% 百分比	No. 人數 (‘000)	% 百分比	No. 人數 (‘000)	% 百分比
Answered/placed advertisement 回應/刊登廣告	53.3	61.0	53.4	58.8	61.1	67.9
Sought assistance from relatives/friends 向親戚/朋友尋求援助	27.4	31.5	29.2	32.2	20.5	22.8
Others 其他	6.6	7.5	8.2	9.0	8.4	9.3
Total 總計	87.2	100.0	90.8	100.0	89.9	100.0

**Table 10B Job-seekers by Desired industry of employment****表 10B 按期望從事的行業劃分的求職人數**

Desired industry of employment 期望從事的行業	1995 Q2 第二季		1996 Q1 第一季		1996 Q2 第二季	
	No. 人數 (‘000)	% 百分比	No. 人數 (‘000)	% 百分比	No. 人數 (‘000)	% 百分比
Manufacturing 製造業	11.2	12.8	11.9	13.1	<b>12.5</b>	<b>13.9</b>
Construction 建造業	13.7	15.7	15.3	16.8	<b>8.3</b>	<b>9.2</b>
Wholesale, retail, import/export trades, restaurants and hotels 批發、零售、進出口貿易、 飲食及酒店業	22.2	25.4	22.3	24.5	<b>24.1</b>	<b>26.7</b>
Transport, storage and communication 運輸、倉庫及通訊業			7.0	7.7	<b>7.3</b>	<b>8.1</b>
Financing, insurance, real estate and business services 金融、保險、地產及商用服務業	16.4	18.8	4.9	5.4	<b>5.2</b>	<b>5.8</b>
Community, social and personal services 社區、社會及個人服務業			6.9	7.6	<b>7.0</b>	<b>7.8</b>
No preference/Others 任何行業/其他	23.8	27.3	22.5	24.8	<b>25.5</b>	<b>28.4</b>
Total 總計	87.2	100.0	90.8	100.0	<b>89.9</b>	<b>100.0</b>

**Table 10C Job-seekers by Desired occupation of employment**  
**表 10C 按期望從事的職業劃分的求職人數**

Desired occupation of employment 期望從事的職業	1996 Q1 第一季		1996 Q2 第二季	
	No. 人數 (‘000)	% 百分比	No. 人數 (‘000)	% 百分比
Managers and administrators 經理及行政級人員	1.7 *	1.8 *	2.0	2.3
Professionals 專業人員	1.4 *	1.5 *	2.5	2.8
Associate professionals 輔助專業人員	6.9	7.6	7.2	8.0
Clerks 文員	11.7	12.9	13.3	14.7
Service workers and shop sales workers 服務工作及商店銷售人員	14.2	15.6	15.4	17.1
Craft and related workers 工藝及有關人員	17.4	19.2	11.0	12.2
Plant and machine operators and assemblers 機台及機器操作員及裝配員	8.2	9.0	8.7	9.6
Elementary occupations 非技術工人	11.2	12.3	9.7	10.8
No preference/Others 任何職業/其他	18.2	20.1	20.2	22.5
Total 總計	90.8	100.0	89.9	100.0

**Table 11A Underemployed persons by Sex and Age**

**表 11A 按性別及年齡劃分的就業不足人數**

Sex/Age group 性別/年齡組別		1995		1996		1996	
		Q2 第二季		Q1 第一季		Q2 第二季	
		No. 人數 (‘000)	Rate@ 比率 (%)	No. 人數 (‘000)	Rate@ 比率 (%)	No. 人數 (‘000)	Rate@ 比率 (%)
<b>Male</b> 男							
	15 - 19	0.7 *	1.5 *	1.5	3.0	0.6 *	1.5 *
	20 - 29	8.3	2.0	7.6	1.8	7.0	1.7
	30 - 39	16.5	2.6	17.9	2.8	14.0	2.1
	40 - 49	15.5	3.3	15.7	3.2	14.6	2.9
	50 - 59	8.2	3.5	5.8	2.5	7.5	3.1
	≥ 60	3.6	3.3	2.0	1.9	2.4	2.3
	Overall 合計	52.7	2.8	50.5	2.6	46.1	2.3
<b>Female</b> 女							
	15 - 19	0.7 *	2.1 *	0.5 *	1.3 *	0.3 *	0.9 *
	20 - 29	0.8 *	0.2 *	1.5 *	0.4 *	1.4	0.3
	30 - 39	4.8	1.2	3.0	0.7	2.5	0.6
	40 - 49	4.1	1.8	4.7	2.0	4.2	1.7
	50 - 59	1.5 *	2.0 *	1.4 *	1.8 *	1.9	2.5
	≥ 60	0.6 *	2.5 *	0.4 *	1.6 *	0.6 *	2.6 *
	Overall 合計	12.5	1.1	11.4	1.0	10.8	0.9
<b>Overall</b> 合計							
	15 - 19	1.4 *	1.8 *	2.0	2.3	0.9 *	1.2 *
	20 - 29	9.1	1.1	9.2	1.1	8.3	1.0
	30 - 39	21.3	2.1	20.8	2.0	16.5	1.5
	40 - 49	19.6	2.8	20.4	2.8	18.8	2.5
	50 - 59	9.7	3.1	7.2	2.3	9.4	3.0
	≥ 60	4.2	3.2	2.4	1.9	3.0	2.3
	Overall 合計	65.2	2.1	62.0	2.0	56.9	1.8

Note : @ Underemployment rate in respect of the specified sex/age group.

註釋 : @ 在某一特定的性別/年齡組別的就業不足率。

**Table 11B Underemployed persons by Sex and Educational attainment**

**表 11B 按性別及教育程度劃分的就業不足人數**

Sex/Educational attainment 性別/教育程度	1995 Q2 第二季		1996 Q1 第一季		1996 Q2 第二季	
	No. 人數 (‘000)	Rate@ 比率 (%)	No. 人數 (‘000)	Rate@ 比率 (%)	No. 人數 (‘000)	Rate@ 比率 (%)
<b>Male</b>						
<b>男</b>						
No schooling/Kindergarten 未受教育/幼稚園	3.4	6.7	2.7	7.2	2.2	5.5
Primary 小學	24.1	5.3	19.0	4.4	20.6	4.6
Secondary/Matriculation 中學/預科	24.8	2.3	28.1	2.5	22.5	2.0
Tertiary 專上教育						
- non-degree 非學位	0.3 *	0.2 *	0.3 *	0.2 *	0.4 *	0.3 *
- degree 學位	0.2 *	0.1 *	0.3 *	0.2 *	0.5 *	0.2 *
Overall 合計	52.7	2.8	50.5	2.6	46.1	2.3
<b>Female</b>						
<b>女</b>						
No schooling/Kindergarten 未受教育/幼稚園	1.6 *	3.7 *	0.6 *	1.8 *	1.2 *	3.3 *
Primary 小學	6.1	3.3	5.3	2.9	5.0	2.6
Secondary/Matriculation 中學/預科	4.7	0.7	5.1	0.7	4.4	0.6
Tertiary 專上教育						
- non-degree 非學位	0	0	0.1 *	0.1 *	0.2 *	0.1 *
- degree 學位	0	0	0.3 *	0.2 *	0.1 *	0.1 *
Overall 合計	12.5	1.1	11.4	1.0	10.8	0.9

**Table 11B (Cont'd.) Underemployed persons by Sex and Educational attainment**

**表 11B (續) 按性別及教育程度劃分的就業不足人數**

Sex/Educational attainment 性別/教育程度	1995 Q2 第二季		1996 Q1 第一季		1996 Q2 第二季	
	No. 人數 (‘000)	Rate <sup>@</sup> 比率 (%)	No. 人數 (‘000)	Rate <sup>@</sup> 比率 (%)	No. 人數 (‘000)	Rate <sup>@</sup> 比率 (%)
<b>Overall</b> 合計						
No schooling/Kindergarten 未受教育/幼稚園	5.0	5.3	3.3	4.7	3.3	4.4
Primary 小學	30.2	4.7	24.4	3.9	25.5	4.0
Secondary/Matriculation 中學/預科	29.5	1.7	33.2	1.8	26.9	1.5
Tertiary 專上教育						
- non-degree 非學位	0.3 *	0.1 *	0.4 *	0.2 *	0.6 *	0.2 *
- degree 學位	0.2 *	0.1 *	0.7 *	0.2 *	0.5 *	0.2 *
<b>Overall</b> 合計	65.2	2.1	62.0	2.0	56.9	1.8

Note : @ Underemployment rate in respect of the specified sex/educational attainment group.

註釋 : @ 在某一特定的性別/教育程度組別的就業不足率。

**Table 11C Underemployed persons by Industry (Detailed group)**

**表 11C 按行業(詳細組別)劃分的就業不足人數**

Industry 行業	1996 Q1 第一季		1996 Q2 第二季	
	No. 人數 (‘000)	Rate@ 比率	No. 人數 (‘000)	Rate@ 比率
<b>Manufacturing</b> 製造業	<u>10.6</u>	<u>2.0</u>	<u>11.7</u>	<u>2.2</u>
Food and beverage 食品及飲品製造業	0.2 *	0.9 *	0.1 *	0.3 *
Clothing and footwear 服裝及鞋類製品業	8.0	4.4	8.3	4.7
Paper and printing 紙品製造及印刷業	0.4 *	0.5 *	0.5 *	0.7 *
Other manufacturing industries 其他產品製造業	2.1	0.8	2.8	1.1
<b>Construction</b> 建造業	<u>31.0</u>	<u>11.4</u>	<u>27.7</u>	<u>9.6</u>
Foundation and superstructure 地基及上蓋工程	15.1	8.1	16.2	8.1
Decoration and maintenance 裝修及保養工程	15.9	19.0	11.5	12.9
<b>Wholesale, retail and import/export trades, restaurants and hotels</b> 批發、零售、進出口貿易、飲食及酒店業	<u>5.1</u>	<u>0.6</u>	<u>4.6</u>	<u>0.5</u>
Wholesale/retail 批發/零售業	1.4 *	0.4 *	1.8	0.5
Import/export trades 進出口貿易業	0.3 *	0.1 *	0.3 *	0.1 *
Restaurants/hotels 飲食/酒店業	3.5	1.3	2.5	1.0
<b>Transport, storage and communication</b> 運輸、倉庫及通訊業	<u>10.4</u>	<u>3.0</u>	<u>8.1</u>	<u>2.3</u>
Transport 運輸業	9.6	3.2	7.6	2.5
Storage 倉庫業	0	0	0.2 *	3.6 *
Communication 通訊業	0.8 *	1.9 *	0.3 *	0.6 *

**Table 11C (Cont'd.) Underemployed persons by Industry (Detailed group)**

表 11C (續) 按行業(詳細組別)劃分的就業不足人數

Industry 行業	1996 Q1 第一季		1996 Q2 第二季	
	No. 人數 ( <sup>'000</sup> )	Rate <sup>@</sup> 比率	No. 人數 ( <sup>'000</sup> )	Rate <sup>@</sup> 比率
Financing, insurance, real estate and business services 金融、保險、地產及商用服務業	<u>0.2</u> *	<u>0.1</u> *	<u>0.5</u> *	<u>0.1</u> *
Financing 金融業	0	0	<u>0.2</u> *	<u>0.1</u> *
Insurance 保險業	0	0	0	0
Real estate and business services 地產及商用服務業	<u>0.2</u> *	<u>0.1</u> *	<u>0.3</u> *	<u>0.1</u> *
Community, social and personal services 社區、社會及個人服務業	<u>4.5</u>	<u>0.7</u>	<u>4.3</u>	<u>0.6</u>
Public administration 公共行政	0	0	0	0
Education, medical and other health and welfare services 教育、醫療、其他保健及福利服務業	<u>0.9</u> *	<u>0.3</u> *	<u>0.9</u> *	<u>0.4</u> *
Other services 其他服務行業	3.6	1.2	<u>3.4</u>	<u>1.2</u>
Others 其他	<u>0.1</u> *	<u>0.3</u> *	<u>0</u>	<u>0</u>
Overall 合計	62.0	2.0	<u>56.9</u>	<u>1.8</u>

Note : @ For technical details of underemployment rates by industry, please see definition of Underemployment Rate in Part III.

註釋 : @ 有關按行業劃分的就業不足率的技術性詳情，請參閱第三部內「就業不足率」的定義。

**Table 11D Underemployed persons by Sex and Industry**

**表 11D 按性別及行業劃分的就業不足人數**

Sex/Industry 性別/行業	1995 Q2 第二季		1996 Q1 第一季		1996 Q2 第二季	
	No. 人數 (‘000)	% 百分比	No. 人數 (‘000)	% 百分比	No. 人數 (‘000)	% 百分比
<b>Male</b> 男						
Manufacturing 製造業	5.8	8.8	4.6	7.4	4.7	8.2
Construction 建造業	33.2	50.9	30.8	49.7	27.6	48.5
Wholesale, retail and import/export trades, restaurants and hotels 批發、零售、進出口貿易、 飲食及酒店業	3.0	4.7	2.5	4.1	2.7	4.7
Transport, storage and communication 運輸、倉庫及通訊業			10.0	16.1	8.0	14.0
Financing, insurance, real estate and business services 金融、保險、地產及商用服務業	10.7	16.4	0	0	0.3 *	0.6 *
Community, social and personal services 社區、社會及個人服務業			2.6	4.2	2.8	5.0
Others 其他	0	0	0.1 *	0.2 *	0	0
Sub-total 小計	52.7	80.9	50.5	81.5	46.1	81.0

**Table 11D (Cont'd.) Underemployed persons by Sex and Industry**

表 11D (續) 按性別及行業劃分的就業不足人數

Sex/Industry 性別/行業	1995 Q2 第二季		1996 Q1 第一季		1996 Q2 第二季	
	No. 人數 (‘000)	% 百分比	No. 人數 (‘000)	% 百分比	No. 人數 (‘000)	% 百分比
<b>Female</b> 女						
Manufacturing 製造業	8.7	13.3	6.1	9.8	7.0	12.4
Construction 建造業	0.1 *	0.2 *	0.2 *	0.3 *	0.2 *	0.3 *
Wholesale, retail and import/export trades, restaurants and hotels 批發、零售、進出口貿易、 飲食及酒店業	2.0 *	3.1 *	2.6	4.2	1.9	3.4
Transport, storage and communication 運輸、倉庫及通訊業			0.4 *	0.7 *	0.1 *	0.2 *
Financing, insurance, real estate and business services 金融、保險、地產及商用服務業	1.7 *	2.5 *	0.2 *	0.3 *	0.1 *	0.3 *
Community, social and personal services 社區、社會及個人服務業			1.9	3.1	1.5	2.6
Others 其他	0	0	0	0	0	0
Sub-total 小計	12.5	19.1	11.4	18.5	10.8	19.0

**Table 11D (Cont'd.) Underemployed persons by Sex and Industry**

表 11D (續) 按性別及行業劃分的就業不足人數

Sex/Industry 性別/行業	1995 Q2 第二季		1996 Q1 第一季		1996 Q2 第二季	
	No. 人數 (‘000)	% 百分比	No. 人數 (‘000)	% 百分比	No. 人數 (‘000)	% 百分比
Overall 合計						
Manufacturing 製造業	14.4	22.1	10.6	17.2	11.7	20.6
Construction 建造業	33.4	51.1	31.0	50.0	27.7	48.8
Wholesale, retail and import/export trades, restaurants and hotels 批發、零售、進出口貿易、 飲食及酒店業	5.1	7.8	5.1	8.3	4.6	8.1
Transport, storage and communication 運輸、倉庫及通訊業			10.4	16.8	8.1	14.2
Financing, insurance, real estate and business services 金融、保險、地產及商用服務業	12.4	19.0	0.2 *	0.3 *	0.5 *	0.9 *
Community, social and personal services 社區、社會及個人服務業			4.5	7.2	4.3	7.6
Others 其他	0	0	0.1 *	0.2 *	0	0
Total 總計	65.2	100.0	62.0	100.0	56.9	100.0

**Table 11E Underemployed persons by Sex and Occupation**

**表 11E 按性別及職業劃分的就業不足人數**

Sex/Occupation 性別/職業	1995 Q2 第二季		1996 Q1 第一季		1996 Q2 第二季	
	No. 人數 (‘000)	% 百分比	No. 人數 (‘000)	% 百分比	No. 人數 (‘000)	% 百分比
<b>Male</b> <b>男</b>						
Managers and administrators 經理及行政級人員			0.3 *	0.6 *	0.1 *	0.2 *
Professionals 專業人員	1.0 *	1.5 *	0	0	0.1 *	0.2 *
Associate professionals 輔助專業人員			0.8 *	1.3 *	0.8 *	1.3 *
Clerks 文員			0.3 *	0.5 *	0.7 *	1.2 *
Service workers and shop sales workers 服務工作及商店銷售人員	2.2 *	3.4 *	2.4	3.9	2.2	3.9
Craft and related workers 工藝及有關人員	31.6	48.4	28.9	46.6	23.5	41.3
Plant and machine operators and assemblers 機台及機器操作員及裝配員	4.6	7.1	7.3	11.8	5.8	10.2
Elementary occupations 非技術工人	13.4	20.5	10.5	16.9	12.9	22.7
Others 其他			0	0	0	0
<b>Sub-total</b> <b>小計</b>	<b>52.7</b>	<b>80.9</b>	<b>50.5</b>	<b>81.5</b>	<b>46.1</b>	<b>81.0</b>

**Table 11E (Cont'd.) Underemployed persons by Sex and Occupation**

表 11E (續) 按性別及職業劃分的就業不足人數

Sex/Occupation 性別/職業	1995 Q2 第二季		1996 Q1 第一季		1996 Q2 第二季	
	No. 人數 (‘000)	% 百分比	No. 人數 (‘000)	% 百分比	No. 人數 (‘000)	% 百分比
Female 女						
Managers and administrators 經理及行政級人員			0.1 *	0.2 *	0	0
Professionals 專業人員	1.3 *	2.0 *	0	0	0.1 *	0.1 *
Associate professionals 輔助專業人員			0.3 *	0.5 *	0.3 *	0.6 *
Clerks 文員			1.1 *	1.7 *	0.7 *	1.3 *
Service workers and shop sales workers 服務工作及商店銷售人員	0.6 *	0.9 *	2.0	3.2	1.0 *	1.7 *
Craft and related workers 工藝及有關人員	0.3 *	0.4 *	0.5 *	0.8 *	0.2 *	0.3 *
Plant and machine operators and assemblers 機台及機器操作員及裝配員	6.4	9.7	4.0	6.4	5.5	9.7
Elementary occupations 非技術工人	3.9	6.0	3.5	5.6	3.0	5.3
Others 其他			0	0	0	0
Sub-total 小計	12.5	19.1	11.4	18.5	10.8	19.0

**Table 11E (Cont'd.) Underemployed persons by Sex and Occupation**

表 11E (續) 按性別及職業劃分的就業不足人數

Sex/Occupation 性別/職業	1995 Q2 第二季		1996 Q1 第一季		1996 Q2 第二季	
	No. 人數 (‘000)	% 百分比	No. 人數 (‘000)	% 百分比	No. 人數 (‘000)	% 百分比
Overall 合計						
Managers and administrators 經理及行政級人員			0.5 *	0.7 *	0.1 *	0.2 *
Professionals 專業人員	2.3 *	3.5 *	0	0	0.2 *	0.3 *
Associate professionals 輔助專業人員			1.1 *	1.8 *	1.1 *	1.9 *
Clerks 文員			1.3 *	2.2 *	1.4	2.5
Service workers and shop sales workers 服務工作及商店銷售人員	2.8	4.3	4.4	7.2	3.2	5.6
Craft and related workers 工藝及有關人員	31.9	48.9	29.4	47.4	23.7	41.6
Plant and machine operators and assemblers 機台及機器操作員及裝配員	11.0	16.8	11.3	18.2	11.4	19.9
Elementary occupations 非技術工人	17.3	26.5	14.0	22.5	15.9	28.0
Others 其他			0	0	0	0
Total 總計	65.2	100.0	62.0	100.0	56.9	100.0

**Table 11F Underemployed persons by Industry and Age**  
**表 11F 按行業及年齡劃分的就業不足人數**

Industry 行業	1996 Q2 第二季							
	Age group 年齡組別						Overall 合計	
	15 - 29		30 - 49		≥ 50		No. 人數	% 百分比
	No. 人數 (‘000)	% 百分比	No. 人數 (‘000)	% 百分比	No. 人數 (‘000)	% 百分比	No. 人數 (‘000)	% 百分比
Manufacturing 製造業	0.8 *	9.1 *	7.5	21.2	3.4	27.2	11.7	20.6
Construction 建造業	4.0	42.8	18.0	51.0	5.8	46.7	27.7	48.8
Wholesale, retail and import/export trades, restaurants and hotels 批發、零售、進出口貿易、 飲食及酒店業	1.4	14.6	2.1	5.8	1.2 *	9.6 *	4.6	8.1
Transport, storage and communication 運輸、倉庫及通訊業	1.5 *	15.8 *	5.2	14.8	1.4	11.2	8.1	14.2
Financing, insurance, real estate and business services 金融、保險、地產及商用服務業	0.3 *	3.5 *	0.1 *	0.3 *	0.1 *	0.5 *	0.5 *	0.9 *
Community, social and personal services 社區、社會及個人服務業	1.3 *	14.1 *	2.4	6.9	0.6 *	4.6 *	4.3	7.6
Others 其他	0	0	0	0	0	0	0	0
Total 總計	9.3	100.0	35.2	100.0	12.4	100.0	56.9	100.0

**Table 11G Underemployed persons by Occupation and Age**

**表 11G 按職業及年齡劃分的就業不足人數**

Occupation 職業	1996 Q2 第二季							
	Age group 年齡組別							
	15 - 29		30 - 49		≥ 50		Overall 合計	
No. 人數 (‘000)	% 百分比	No. 人數 (‘000)	% 百分比	No. 人數 (‘000)	% 百分比	No. 人數 (‘000)	% 百分比	
Managers and administrators 經理及行政級人員	0	0	0.1 *	0.3 *	0	0	0.1 *	0.2 *
Professionals 專業人員	0.2 *	1.9 *	0	0	0	0	0.2 *	0.3 *
Associate professionals 輔助專業人員	0.5 *	5.4 *	0.5 *	1.4 *	0.1 *	0.7 *	1.1 *	1.9 *
Clerks 文員	0.8 *	8.3 *	0.4 *	1.2 *	0.3 *	2.0 *	1.4	2.5
Service workers and shop sales workers 服務工作及商店銷售人員	1.1 *	12.1 *	1.6	4.4	0.5 *	4.0 *	3.2	5.6
Craft and related workers 工藝及有關人員	3.5	37.8	16.3	46.3	3.8	30.9	23.7	41.6
Plant and machine operators and assemblers 機台及機器操作員及裝配員	1.2 *	13.0 *	7.7	21.9	2.4	19.7	11.4	19.9
Elementary occupations 非技術工人	2.0	21.6	8.6	24.5	5.3	42.7	15.9	28.0
Others 其他	0	0	0	0	0	0	0	0
<b>Total</b> 總計	<b>9.3</b>	<b>100.0</b>	<b>35.2</b>	<b>100.0</b>	<b>12.4</b>	<b>100.0</b>	<b>56.9</b>	<b>100.0</b>

**Table 11H Underemployed persons by Hours of work****表 11H 按工作時數劃分的就業不足人數**

Hours of work 工作時數	1995 Q2 第二季		1996 Q1 第一季		1996 Q2 第二季	
	No. 人數 (‘000)	% 百分比	No. 人數 (‘000)	% 百分比	No. 人數 (‘000)	% 百分比
< 20	18.6	28.6	23.2	37.4	20.7	36.4
20 - 24	21.7	33.3	17.7	28.6	19.5	34.3
25 - 29	5.4	8.2	2.9	4.6	3.2	5.6
30 - 34	19.5	29.9	18.2	29.3	13.5	23.6
Total 總計	65.2	100.0	62.0	100.0	56.9	100.0
Median (Hours) 中位數(時數)	24		24		24	

**Table 11I Underemployed persons by Monthly employment earnings****表 11I 按每月就業收入劃分的就業不足人數**

Monthly employment earnings (HK\$) 每月就業收入(港元)	1995 Q2 第二季		1996 <sup>(1)</sup> Q1 第一季		1996 Q2 第二季	
	No. 人數 (‘000)	% 百分比	No. 人數 (‘000)	% 百分比	No. 人數 (‘000)	% 百分比
< 2,000	3.5	5.4	3.8	6.2	4.4	7.8
2,000 - 2,999	7.5	11.4	7.0	11.3	5.1	9.0
3,000 - 3,999	10.0	15.3	6.8	11.0	7.8	13.7
4,000 - 4,999	9.0	13.8	6.8	11.0	6.9	12.2
5,000 - 5,999	10.0	15.4	9.3	15.0	7.2	12.7
6,000 - 6,999	7.8	11.9	7.6	12.3	7.9	13.9
7,000 - 7,999	6.1	9.3	7.8	12.6	5.3	9.3
≥ 8,000	11.4	17.5	12.8	20.6	12.2	21.5
Total 總計	65.2	100.0	62.0	100.0	56.9	100.0
Median (HK\$) 中位數(港元)	5,000		5,000		5,000	

Note : (1) Earnings exclude Chinese New Year bonus/double pay.

註釋 : (1) 收入不包括農曆年花紅/雙糧。

**Chart 1 Unemployment Rates #**

**圖 1 失業率 #**

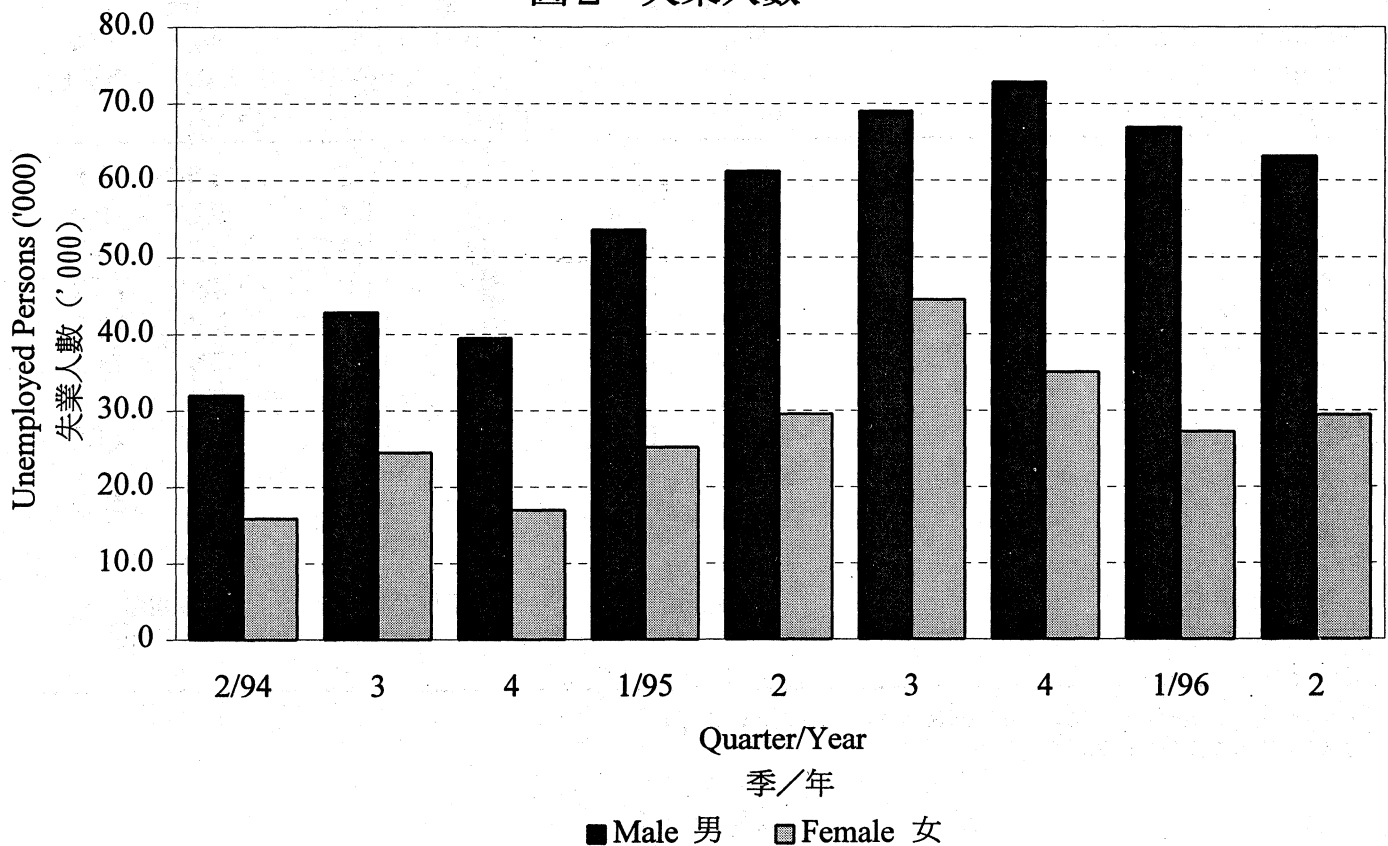


# Adjusted for seasonal variations in the proportion of first-time job-seekers in the labour force.

# 已按首次求職人士佔勞動人口比例的季節性差異作出調整。

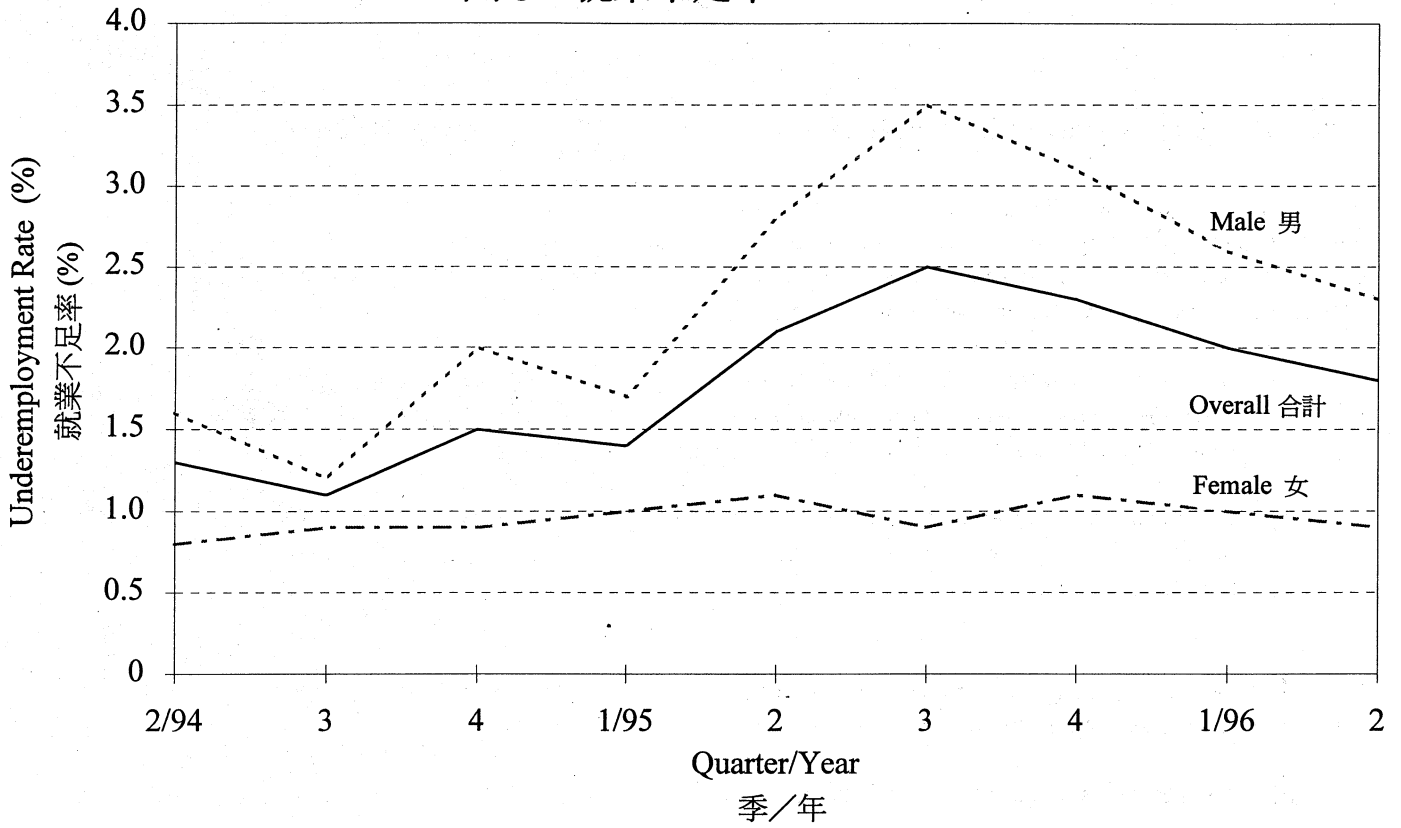
**Chart 2 Unemployed Persons**

**圖 2 失業人數**



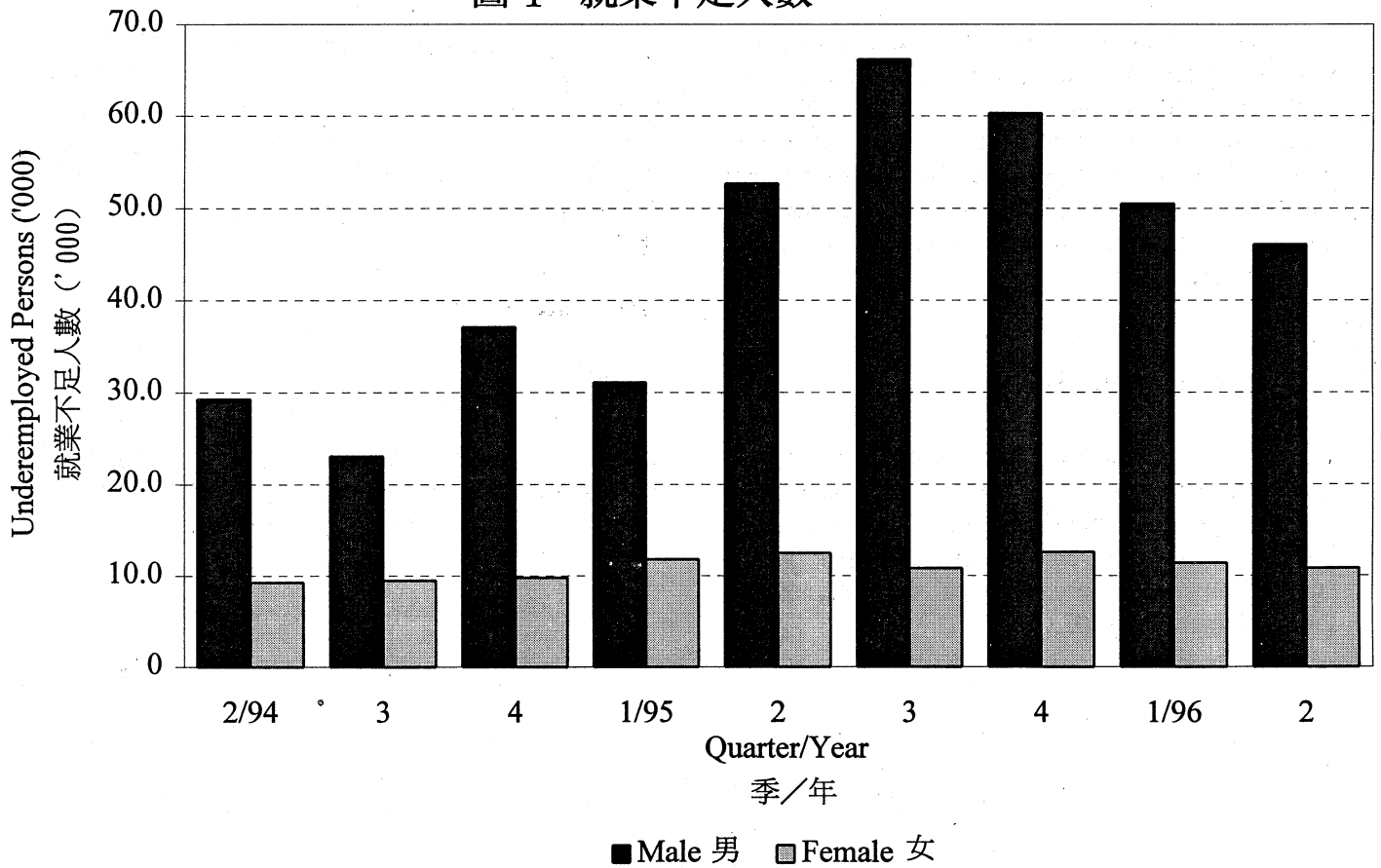
**Chart 3 Underemployment Rates**

**圖 3 就業不足率**



**Chart 4 Underemployed Persons**

**圖 4 就業不足人數**



## PART II SURVEY METHODOLOGY

### 第二部 統計調查方法

#### 1. Coverage of Survey and Sample Design

1.1 The General Household Survey in Q2 1996 was based on a sample of quarters selected scientifically from records of all permanent and temporary structures in Hong Kong. The sampling units were:

- a) permanent quarters in built-up areas (including urban areas, new towns and major developments); and
- b) segments in non-built-up areas (i.e. geographic areas each containing about 10 quarters).

1.2 The survey covered the land-based civilian non-institutional population and thus did not cover:

- a) hotel transients and inmates of institutions;
- b) military personnel and their dependents; and
- c) persons living on board vessels.

1.3 The survey was conducted on a continuous basis. A rotational sample design was adopted such that about half of the sample in Q2 1996 were enumerated three months ago. Information on personal, labour force and household characteristics was collected from all persons in the sampled quarters. A 'shifting survey moment' or 'yesterday' approach was applied.

#### 2. The Questionnaire

2.1 The questionnaire was designed to collect detailed information on labour force characteristics. The concepts and definitions used to measure labour force, unemployment and underemployment follow closely the recommendations of the International Labour Organization (ILO).

#### 1. 統計調查範圍及樣本設計

1.1 一九九六年第二季的綜合住戶統計調查是以屋宇單位的樣本作依據。該樣本是透過科學方法從全港所有永久性及臨時樓宇紀錄中抽選。抽樣單位是：

- a) 在已建設地區（包括市區、新市鎮和主要發展區）內的永久性屋宇單位；及
- b) 在非建設地區內的小區（每一小區平均約有十個屋宇單位）。

1.2 這項統計調查涵蓋陸上非住院平民人口，因而並不包括：

- a) 入住酒店的過境旅客及公共機構/社團院舍的住院人士；
- b) 軍人及其家眷；及
- c) 水上居民。

1.3 這是一項持續進行的統計調查，採用循環式樣本設計。按照這抽樣方式，一九九六年第二季所採用的樣本，大約一半在三個月前曾受訪問。在抽中的屋宇單位內，所有人士均問及有關個人、勞動力及住戶特徵的資料。統計調查採用「移動統計時點」或「昨日統計時點」的搜集資料方法。

#### 2. 問卷

2.1 問卷旨在搜集有關勞動人口特徵的詳細資料。用以計算勞動人口、失業和就業不足數字所採用的概念和定義，基本上遵照國際勞工組織的建議。

2.2 Data items included in the questionnaire were:

### Household information

1. Type of living quarters
2. Number of households in the quarters
3. Type of household
4. Type of accommodation
5. Tenure
6. Monthly household rent (including rates)
7. Number of persons in the household at the reference night
8. Number of persons usually living in the household

### Personal information

9. Relationship to head of household
10. Whereabouts at reference night
11. Whether usually living in the household
12. Age
13. Sex
14. Marital status
15. Educational attainment
16. Activity status during the last 7 days
17. Non-employment income in the last month

### Employment information

18. Industry
19. Occupation
20. Number of hours worked during the last 7 days
21. Employment earnings in the last month

### Unemployment information

22. Whether available for work during the last 7 days
23. Reason for not available for work
24. Whether seeking for work during the last 30 days
25. Reason for not seeking work
26. Action taken to seek work
27. Duration of unemployment
28. Reason for leaving previous job
29. Previous occupation
30. Previous industry
31. Industry intended to work in
32. Occupation intended to work in

2.2 問卷包括下列資料項目：

### 住戶資料

1. 屋宇單位類型
2. 單位內的住戶數目
3. 住戶類型
4. 居處類型
5. 租住權
6. 住戶每月租金（包括差餉）
7. 在統計夜於住戶內的人數
8. 住戶內的常住人口

### 個人資料

9. 與戶主關係
10. 在統計夜身處地點
11. 是否常住在該住戶內
12. 年齡
13. 性別
14. 婚姻狀況
15. 教育程度
16. 訪問前七天內的經濟活動身分
17. 上月的非就業收入

### 就業資料

18. 行業
19. 職業
20. 訪問前七天內的工作時數
21. 上月的就業收入

### 失業資料

22. 訪問前七天內可否隨時工作
23. 不能隨時工作的原因
24. 訪問前三十天內有否找尋工作
25. 沒有找尋工作的原因
26. 找尋工作所曾採取的行動
27. 持續失業的期間
28. 離開上一份工作的原因
29. 以前從事的職業
30. 以前從事的行業
31. 期望從事的行業
32. 期望從事的職業

## Underemployment information

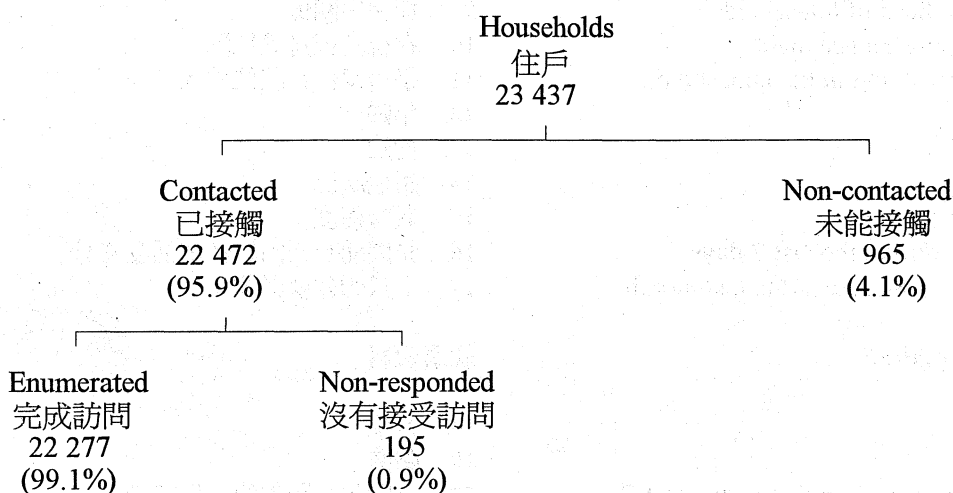
33. Number of hours usually worked in a week
34. Reason for working less than 35 hours during the last 7 days
35. Whether available for additional work in the last 7 days
36. Whether seeking additional work during the last 30 days
37. Action taken to seek additional work

## 就業不足資料

33. 一星期通常的工作時數
34. 訪問前七天內工作少於三十五小時的原因
35. 訪問前七天內可否擔任更多工作
36. 訪問前三十天內有否找尋更多工作
37. 找尋更多工作所曾採取的行動

## 3. Enumeration Experience

3.1 There were a total of 23 437 households in the sample of 22 454 occupied living quarters. The enumeration experience of the survey is summarized below:



## 3. 訪問經驗

3.1 在有人居住的 22 454 個屋宇單位中，共有 23 437 個住戶。統計調查的訪問結果概列如下：

## 4. Reliability of the Estimates

4.1 Results of the General Household Survey are subject to sampling error and non-sampling error. The estimates in this report were based on information obtained from a particular sample, which was one of a large number of possible samples of the same size that could be selected using the same sample design. By chance, estimates derived from different samples would differ from each other. The 'sampling error' is a measure of these variations and is thus a measure of the precision with which an estimate derived from a particular sample would approximate the population parameter to be measured.

4.2 It should be noted that since all estimates in this report are subject to sampling error, a zero figure may mean a non-zero figure of a small magnitude.

## 4. 估值的可靠性

4.1 綜合住戶統計調查的結果受抽樣誤差和非抽樣誤差的影響。本報告的估價是根據一個特定樣本所得的資料編製。以同樣的抽樣方式，可抽選出許多大小相同的可能樣本，而是項統計調查的樣本為眾多樣本的其中之一。由於每次抽選的樣本都會略有不同，因此不同樣本得出的估價亦互有差異。「抽樣誤差」正是計算這些差異的統計量數，可用以量度從一個特定樣本所得的估價，在估計總體數據方面的精確程度。

4.2 由於本報告的估價有抽樣誤差，寫作零的數字，可能是一個小數值的數字，而並非是零。

4.3 For comparing the precision of the estimates of various variables in this report, the *coefficient of variation* (CV) is used. CV is obtained by expressing the *standard error* (SE) as a percentage of the estimate to which it refers. In turn, the SE is computed according to a formula which is established on the basis of statistical theory. Generally speaking, the SE is related to the variability of the elements in the population, the size of the sample and the sample design adopted for the survey.

4.4 In this report, estimates with CV greater than 25% are marked with an asterisk (\*). They should be interpreted with particular caution.

4.5 The coefficients of variation of the estimates of the main variables are given below:

4.3 本報告在比較各種變數估值的精確程度時，採用了離中系數。離中系數的計算方法，是將標準誤差除以有關估值，再以百分比表示。標準誤差是根據統計原理所訂的公式計算。一般來說，標準誤差與總體內各元素的變異、樣本規模和樣本設計相關。

4.4 在本報告內，離中系數超過 25% 的估值會註上星 (\*) 號，顯示該估值須謹慎闡釋。

4.5 主要變數估值的離中系數載列如下：

Variable 變數	Sample estimate 樣本估值	CV 離中系數 (%)
Labour force 勞動人口	3 173 700	0.2
Unemployed persons 失業人數	92 600	3.8
Underemployed persons 就業不足人數	56 900	3.9
Labour force participation rate 勞動人口參與率	63.0%	0.2
Unemployment rate 失業率	2.9%	3.7
Underemployment rate 就業不足率	1.8%	3.9

## PART III DEFINITION OF TERMS

### 第三部 詞彙釋義

**Activity status** (Please see **Labour force**).

**Age** refers to the number of complete years a person has passed since his/her birth date.

**Economically active population**

The population comprises two subgroups, viz. the economically active population and the economically inactive population.

The **economically active population**, synonymous with the **labour force**, comprises the employed population and the unemployed population. (Please see **Labour force** for details)

The **economically inactive population** is made up of those persons who have not had a job and have not been at work during the seven days before enumeration, excluding persons who have been on leave/holiday during the seven-day period and persons who are unemployed. Persons such as home-makers, retired persons and all those below the age of 15 are thus included.

**Educational attainment** refers to the highest level of education attained by a person in an educational institution regardless of whether he/she had completed the course. Only formal courses are counted as educational attainment. A formal course must satisfy the following criteria:

- 1) It lasts for at least one academic year.
- 2) It has specific academic qualifications for entrance (except degree courses offered by the Open Learning Institute of Hong Kong).
- 3) It adopts examinations to assess the academic achievement.

**Industry** refers to the activity of the establishment in which the respondent worked during the seven days before enumeration. The classification used follows the Major Divisions of the Hong Kong Standard Industrial Classification (1991).

**經濟活動身分** (請參閱**勞動人口**)

**年齡**：指某人在出生後所度過的完整年數。

**從事經濟活動人口**：

人口可劃分為從事經濟活動人口及非從事經濟活動人口。

**從事經濟活動人口**，即**勞動人口**，可再分為就業人口及失業人口。(詳情請參閱**勞動人口**)

**非從事經濟活動人口**包括所有在統計前七天內並無職位亦無工作的人，在這七天內正休假的人士及失業人士除外。而料理家務者、退休人士及十五歲以下人士等則包括在內。

**教育程度**：指某人在學校或其他教育機構達到的最高教育水平，不論他／她已否完成該項課程。計算教育程度時只包括正式課程。正式課程須符合下列準則：

- 1) 最少為期一學年。
- 2) 入學須具備特定的學歷資格(香港公開進修學院的學位課程除外)。
- 3) 採用考試方式評定學業成績。

**行業**：指統計前七天內受訪者工作機構的活動類別，分類法是依照「香港標準行業分類(一九九一年)」的主要類別。

**Manufacturing** - including spinning of cotton and other yarn, weaving and knitting of cotton and other fabrics; bleaching, dyeing, finishing; manufacturing of wearing apparel, knitwear and other made-up textile goods; and manufacturing of carpets, cordage, ropes and twines, food, beverage, tobacco, footwear, leather products, rubber products, plastic products, wood products, printed matters and paper products, metal products, machinery, chemicals, chemical products, glass and pottery.

**Construction** - including building construction, civil engineering, plumbing, electrical wiring, air-conditioning installation and repair.

**Wholesale, retail and import/export trades, restaurants and hotels** - including wholesale and retail trades; import and export trades; peddlers; Chinese general brokers; other commercial agents; restaurants; cafes; hotels and rooming houses.

**Transport, storage and communication** - including land transport, water transport and air transport; services allied to transport; storage and warehousing; and post and telecommunications.

**Financing, insurance, real estate and business services** - including financing; insurance; real estate; offices of lawyers, accountants, auditors, architects, surveyors and advertising agents and data processing services.

**Community, social and personal services** - including government services; educational service; medical, dental and other health services; sanitary services; welfare institutions; religious organizations; cinemas and theatres; radio and television broadcasting; libraries and museums; electrical repair shops; automobile repair garages and other household and personal services.

**Others** - including such industries as 'Agriculture and fishing'; 'Mining and quarrying'; 'Electricity, gas and water' and industrial activities inadequately described or unclassifiable.

**製造業**：包括棉及其他紗線紡織、棉及其他布料的梭織及針織；漂染、印染、整理；衣著用品、針織及其他紡織製成品的製造；地氈、繩索、細繩、食品、飲品、烟草、鞋履、皮革製品、橡膠製品、塑膠製品、木製品、印刷品、紙品、金屬製品、機械、化學品、化學產品、玻璃及陶器的製造。

**建造業**：包括樓宇建築、土木工程、敷設水管、敷設電線、安裝及維修冷氣系統。

**批發、零售、進出口貿易、飲食及酒店業**：包括批發及零售業；進出口貿易業；小販；非固定行業的經紀；其他商業代理人；酒樓；咖啡室；酒店及旅舍。

**運輸、倉庫及通訊業**：包括陸路運輸、海上運輸及空運業；運輸業的附帶服務；貨棧及倉庫；郵政及電訊業。

**金融、保險、地產及商用服務業**：包括金融；保險；地產；律師、會計師、核數師、建築師、測量師及廣告公司的辦事處及資料處理服務。

**社區、社會及個人服務業**：包括政府服務；教育服務；醫療、牙科及其他保健服務；衛生服務；福利機構；宗教團體；電影院及劇院；電台及電視台；圖書館及博物館；電器修理店；車輛維修店以及其他家庭及個人服務。

**其他**：包括「農業及漁業」、「採礦及採石業」、「電力、煤氣及水務業」等行業，及報稱的行業不能分類或描述不足。

**Labour force** refers to the land-based civilian non-institutional population aged 15 or over who satisfy the criteria for inclusion in the employed population or the unemployed population as defined below. Hotel transients, inmates of institutions, military personnel and their dependents, and persons living on board vessels are excluded.

### *The employed population*

- 1) This comprises all employed persons. For a person aged 15 or over to be classified as employed, that person should:
  - a) be engaged in performing work for pay or profit during the seven days before enumeration; *or*
  - b) have formal job attachment (i.e. that the person has continued receipt of wage or salary; *or* has an assurance or an agreed date of return to job or business; *or* is in receipt of compensation without obligation to accept another job).
- 2) Employed persons can be categorized into:

*Self-employed:* A person who works for profit or fees in his/her own business/profession, neither employed by someone nor employing others.

*Employer:* A person who works for profit or fees in his/her own business/profession and employs one or more persons to work for him/her.

*Employee:* A person who works for an employer (private companies or government) for wage, salary, commission, tips, or pay in kind. This includes outworker, domestic helper and paid family worker.

**勞動人口：**指十五歲或以上陸上非住院平民人口，並符合下列就業人口或失業人口定義的人士。入住酒店的過境旅客和公共機構／社團院舍的住院人士、軍人及其家眷以及水上居民並不包括在內。

### **就業人口：**

- 1) 由所有就業人士構成。一名十五歲或以上人士如符合下列情況，可界定為就業人士：
  - a) 統計前七天內從事一些工作賺取薪酬或利潤；*或*
  - b) 有一份正式工作（即該人士持續支取工資或薪金；*或*已獲保證或已有既定日期返回工作崗位或所經營之業務；*或*正支取補償費而無須接受其他工作）。
- 2) 就業人士可分為下列幾類：

*自營業者：*從事本身業務／職業時為賺取利潤或費用而工作，並沒有僱用他人或受僱於人。

*僱主：*從事本身業務／職業時為賺取利潤或費用而工作，最少僱用一人為其工作。

*僱員：*為賺取工資、薪金、佣金、小費或實物津貼而為僱主（私營公司或政府）工作，包括外發工、家庭傭工和支薪家庭從業員。

- 3) Unpaid family workers who work for no pay in a family business are considered as employed. Food and lodging and pocket money are not counted as pay. However, if the workers receive regular pay for the work performed, they should be considered as employees.
- 4) Apprentices who receive pay in cash or in kind are considered as employed.
- 5) Volunteer workers who perform some work not for any pay in cash or in kind, and who do not have a job or an enterprise are not considered as employed.

### *The unemployed population*

- 1) This comprises all unemployed persons. For a person aged 15 or over to be classified as unemployed, that person should:
  - a) not have had a job and should not have performed any work for pay or profit during the seven days before enumeration; *and*
  - b) have been available for work during the seven days before enumeration; *and*
  - c) have sought work during the thirty days before enumeration.
- 2) Notwithstanding the above, the following types of persons are considered as unemployed:
  - a) persons without a job, have sought work but have not been available for work because of temporary sickness; *and*
  - b) persons without a job, have been available for work but have not sought work because they:
    - i) have made arrangements to take up a new job or to start business at a subsequent date; *or*

- 3) 為有關家屬生意工作而並無收取報酬的無酬家庭從業員，應視作就業人士。報酬不包括膳宿和零用錢，但若他們因工作而定時支取報酬，應視為僱員。
- 4) 支取現金報酬或實物津貼的學徒，應視作就業人士。
- 5) 沒有按所做工作支取現金報酬或實物津貼的志願工作者，而本身並無從事一份工作或企業，不應視作就業人士。

### *失業人口：*

- 1) 由所有失業人士構成。一名十五歲或以上人士如符合下列情況，便界定為失業人士：
  - a) 在統計前七天內並無職位，且並無為賺取薪酬或利潤而工作；*及*
  - b) 在統計前七天內隨時可工作；*及*
  - c) 在統計前三十天內有找尋工作。
- 2) 除上述情況外，下列人士亦視作失業人士：
  - a) 並無職位，正找尋工作，但由於暫時生病而不能工作的人士；*及*
  - b) 並無職位，且隨時可工作，但由於下列原因並無找尋工作的人士：
    - i) 已為於稍後時間擔當的新工作或開展的業務作出安排；*或*

- ii) were expecting to return to their original jobs (e.g. casual workers are usually called back to work when service is needed); *or*
- iii) believed that work was not available to them.

### *The underemployed population*

- 1) The criteria for an employed person to be classified as underemployed are:

*involuntarily* working less than 35 hours during the seven days before enumeration; *and* either

- a) has been available for additional work during the seven days before enumeration; *or*
- b) has sought additional work during the thirty days before enumeration.

- 2) Working short hours is considered as *involuntary* if it is due to economic reasons such as slack work, material shortage, mechanical breakdown and inability to find a full-time job.

**Labour force participation rate** refers to the proportion of labour force in the land-based civilian non-institutional population aged 15 or over.

**Monthly employment earnings** refer to earnings from all jobs during the last month. For employees, they include wage and salary, bonus, commission, housing allowance, overtime allowance and attendance allowance. However, back pays are excluded. For employers and self-employed, they refer to net earnings from business or amounts drawn from the enterprise for personal and household use.

**Occupation** refers to the kind of work, nature of duties and main task performed by a person in his/her main job during the seven days before enumeration. The classification used basically follows the major groups of the International Standard Classification of Occupations (1988) or (ISCO-88) for abbreviation, with local adaptation for Hong Kong.

- ii) 正期待返回原來的工作崗位（例如散工在有需要時通常會獲通知開工）；*或*

- iii) 相信沒有工作可做。

### **就業不足人口：**

- 1) 界定一個就業人士為就業不足人士的準則如下：

在統計前七天內在*非自願*情況下工作少於三十五小時，及符合下列其中一種情況：

- a) 在統計前七天內可擔任更多工作；*或*
- b) 在統計前三十天內有找尋更多工作。

- 2) 因經濟原因，如工作量不足、原料短缺、機械故障或不能找到全職工作，以致只能工作短時數的人士，可視作*非自願*情況下將工作時數縮短。

**勞動人口參與率：**指勞動人口佔所有十五歲或以上陸上非住院平民人口的比例。

**每月就業收入：**指上月從所有工作所獲得的收入。就僱員來說，收入包括工資和薪金、花紅、佣金、房屋津貼、逾時工作津貼及勤工津貼，但不包括補薪。就僱主和自營作業人士而言，收入是指從業務所得的淨收入或從企業提取作個人及家居用途的款額。

**職業：**指在統計前七天內某人所從事的主要工作種類、性質及主要職務。分類基本上是按照「國際標準職業分類（一九八八年）」或簡稱 ISCO-88 的主要組別，並因應本港情況作出修訂。

**Managers and administrators** - including administrators, commissioners and directors in government service; consuls; councillors; directors, chief executive officers, presidents, general managers, functional managers, branch managers and small business managers in industry, commerce, import and export trade, wholesale and retail trade, catering and lodging services, transport, electricity, gas, water and other services and agricultural and fishery sectors.

**Professionals** - including qualified professional scientists, doctors, dentists and other medical professionals; architects, surveyors and engineers; vice-chancellors, directors, academic staff and administrators of university and post-secondary college; principals and teachers of secondary school; statisticians; mathematicians; system analysts and computer programmers; lawyers and judges; accountants; business consultants and analysts; social workers; translators and interpreters; news editors and journalists; writers; librarians and members of religious orders.

**Associate professionals** - including science technicians, nurses and midwives, dental assistants and other health associate professionals; architectural, surveying and engineering technicians; optical and electronic equipment controllers; ship pilots and air traffic controllers; principals and teachers of primary school and kindergarten/nursery; statistical assistants; computer operators; law clerks; accounting supervisors; public relation officers; sales representatives; designers; estate managers; social work assistants; superintendents, inspectors and officers of the police and other discipline services; performers and sportsmen.

**Clerks** - including stenographers, secretaries and typists; bookkeeping, finance, shipping, filing and personnel clerks; cashiers and tellers; receptionists and information clerks.

**Service workers and shop sales workers** - including air hostesses and travel guides; house stewards; cooks and waiters; baby-sitters; hairdressers and beauticians; rank and file of the police and other discipline services; transport conductors and other service workers; wholesale and retail salesmen in shops; shop assistants and fashion models.

**經理及行政級人員**：包括政府的行政人員、專員及署／處長、領事館職員、議員；工商界、進出口貿易、批發和零售業、飲食及旅店業、運輸、電力、氣體、水務及其他服務、以及漁農業中的董事、執行總監、總裁、總經理、專職經理、分行經理及小型機構經理。

**專業人員**：包括合資格的專業科學家、醫生、牙醫及其他醫療專業人員；建築師、測量師及工程師；大學及專上學院的校長、院長、教職員及行政人員；中學校長及教師；統計師、數學家、電腦系統分析員及程序編寫員；律師及法官；會計師；商界顧問及分析員；社會工作者；翻譯員及傳譯員；新聞編輯及從業員；作家；圖書館管理員及宗教活動專業人員。

**輔助專業人員**：包括科學技術員、護士及助產士、牙科助理及其他保健輔助專業人員；建築、測量及工程技術員；光學及電子儀器控制員；船隻領航員及空中交通指揮員；小學及幼稚園/幼兒院校長及教師；統計助理；電腦操作員；法律文員；會計督導員；公共關係主任；營業代表；設計師；屋邨經理；社會工作助理；警隊及其他紀律部隊的警司、督察及主任；藝人及運動員。

**文員**：包括速記員、秘書及打字員；簿記、金融、船務、存案及人事部文員；出納員及銀行櫃位員；接待員及查詢文員。

**服務工作及商店銷售人員**：包括空中小姐及導遊；管家；廚師及侍應生；褸姆；理髮師及美容師；警隊及其他紀律部隊的員佐級人員；運輸指導員及其他服務工作人員；批發及零售業推銷員；店員及時裝模特兒。

**Craft and related workers** - including miners and quarrymen; bricklayers, carpenters and other construction workers; metal moulders; blacksmiths; machinery, electric and electronic instrument mechanics; jewellery workers and watch makers; potters; typesetters; bakers, food and beverage processors; painters; craft workers in textile, garment, leather, rubber and plastic trades and other craft workers.

**Plant and machine operators and assemblers** - including well drillers and borers; ore smelting furnace operators; brick and tile kilnmen; sawmill sawyers; paper makers; chemical processing plant operators; power-generating plant and boiler operators; asbestos cement products makers; metal finishers and electroplaters; dairy and other food processing machine operators; printing machine operators; machine operators for production of textile, rubber and plastic products; assemblers; drivers; seamen and other plant and machine operators.

**Elementary occupations** - including street vendors; domestic helpers and cleaners; messengers; private security guards; watchmen; freight handlers; lift operators; construction labourers; hand packers; agricultural and fishery labourers.

**Others** - including farm workers, animal husbandry workers and fishermen, and occupations unidentifiable and inadequately described.

**工藝及有關人員**：包括礦工及採石工人；砌磚工人、木匠及其他建築業工人；金屬模工；鐵匠；機械、電器及電子儀器技工；珠寶工人及手錶製造工人；製陶工人；排字工人；麵包師傅、食品及飲品處理工人；油漆工人；紡織、成衣、皮革、橡膠和塑膠行業的工人及其他工藝工人。

**機台及機器操作員及裝配員**：包括鑽井工人及鏟床操作員；礦熔爐操作員；磚及磁磚燒窖工人；鋸木廠鋸工；造紙工人；化學處理機台操作員；發電廠及鍋爐操作員；石棉水泥產品製造工人；金屬整理工人及電鍍工人；牛奶製品及其他食品處理機器操作員；印刷機操作員；生產紡織、橡膠及塑膠製品的機器操作員；裝配員；司機；海員及其他工廠及機器操作員。

**非技術工人**：包括小販；家務助理及清潔工人；信差；私人護衛員；看更；貨運工人；電梯操作員；建造業雜工；包裝工人；漁農業雜工。

**其他**：包括農夫、畜牧業工人及漁夫、及報稱的職業不能辨別或描述不足。

**Underemployed population** (Please see *The underemployed population* under **Labour force**)

**Underemployment rate** refers to the proportion of underemployed persons in the labour force. As regards underemployment rates by industry, since in deriving the labour force by industry to serve as the denominator, (i) unemployed persons are classified according to their *previous* industry which may not necessarily be the one which he/she will enter, and (ii) there is no information on previous industry in respect of first-time job-seekers and re-entrants into the labour force, such rates are not strictly comparable to the overall underemployment rate and should be interpreted with caution.

**Unemployed population** (Please see *The unemployed population* under **Labour force**)

**就業不足人口** (請參閱**勞動人口**內的**就業不足人口**)

**就業不足率**：指就業不足人士在勞動人口中所佔的比例。有關按行業劃分的就業不足率，由於在計算用作分母的按行業劃分的勞動人口時，(i) 失業人士是按其**以前**從事的行業劃分，因而未必能確實反映他們將從事工作的行業，而且(ii) 亦沒有首次求職人士和重新加入勞動人口的失業人士所屬行業的資料。因此，按行業劃分的就業不足率不能與整體的就業不足率作嚴謹比較，同時亦須謹慎闡釋。

**失業人口** (請參閱**勞動人口**內的**失業人口**)

**Unemployment rate** refers to the proportion of unemployed persons in the labour force. As regards unemployment rates by industry, since in deriving both the numerator and the denominator, (i) unemployed persons are classified according to their *previous* industry which may not necessarily be the one which he/she will enter, and (ii) there is no information on previous industry in respect of first-time job-seekers and re-entrants into the labour force, such rates are not strictly comparable to the overall unemployment rate and should be interpreted with caution.

失業率：指失業人士在勞動人口中所佔的比例。有關按行業劃分的失業率，由於在計算分子和分母時，(i) 失業人士是按其**以前**從事的行業劃分，因而未必能確實反映他們將從事工作的行業，而且(ii) 亦沒有首次求職人士和重新加入勞動人口的失業人士所屬行業的資料。因此，按行業劃分的失業率不能與整體的失業率作嚴謹比較，同時亦須謹慎闡釋。



9/96 J56009602B0 \$53