

這份刊物的 PDF 版本的文字是從印刷版掃描而成，再利用光學字符識別軟件轉換成電子格式。由於原印刷版本已印製並保存多年，光學字符識別技術未必能準確地識別某些文字或數字。因此，搜索或複製此 PDF 檔案內的文字時應加以注意。

The text of this PDF publication was scanned from its printed version and then converted to electronic text using Optical Character Recognition (OCR) software. Because of the age and condition of the original printed copy, the OCR may not recognise certain characters or figures accurately. Caution should therefore be taken when searching or copying text from this PDF publication.

**Quarterly Report
on
General Household Survey**

January to March 1995

Census and Statistics Department, Hong Kong

Quarterly Report

on

GENERAL HOUSEHOLD SURVEY

January to March 1995

Enquiries about this publication can be directed to :-

General Household Survey Section
Census and Statistics Department

Address : 5/F., Fortress Tower,
250 King's Road, Hong Kong.

Tel. No. : 2887 5508

Fax No. : 2512 2656

CONTENTS

Page

PART I : SURVEY RESULTS

1. Introduction	1
2. Summary Statistics	1
3. Main Survey Findings	3
4. Labour Force Participation	3
5. Characteristics of the Employed	3
6. Characteristics of the Unemployed	4
7. Characteristics of the Underemployed	5
8. Tables	
Table 1.1 Labour force by Sex by Age	7
Table 1.2 Female labour force by Marital status by Age	8
Table 2.1 Employed persons by Sex by Age	9
Table 2.2 Employed persons by Activity status and Educational attainment	10
Table 2.3 Employed persons by Industry	11
Table 2.4 Employed persons by Occupation and Hours of work	12
Table 2.5 Median hours of work of employed persons by Industry	13
Table 2.6 Employed persons by Monthly employment earnings	14
Table 2.7 Median monthly employment earnings by Industry and Occupation of main employment	15
Table 2.8 Employed persons who worked less than 35 hours by Reason for working less than 35 hours	16
Table 3.1 Unemployed persons by Age, Sex and Educational attainment	17
Table 3.2 Unemployed persons by Duration of unemployment	18
Table 3.3 Unemployed persons having had a previous job by Previous industry and occupation	19
Table 3.4 Unemployed persons having had a previous job by Reason for unemployment	20
Table 3.5 Job-seekers by Desired industry of employment	20

CONTENTS

Page

Table 4.1	Underemployed persons by Age, Sex and Educational attainment	21
Table 4.2	Underemployed persons by Industry and Occupation	22
Table 4.3	Underemployed persons by Hours of work and Monthly employment earnings	23
9.	Charts	
Chart 1	Labour Force Participation Rates	24
Chart 2	Unemployment Rates	25
Chart 3	Unemployed Persons	26
Chart 4	Underemployment Rates	27
Chart 5	Underemployed Persons	28
PART II : SURVEY METHODOLOGY		
1.	Coverage of Survey and Sample Design	29
2.	The Questionnaire	29
3.	Enumeration Experience	31
4.	Reliability of the Estimates	32
PART III : DEFINITION OF TERMS		34

Notes : (1) For simplicity, throughout the report:

"Q1" is used to stand for January to March,
"Q2" for April to June,
"Q3" for July to September,
"Q4" for October to December.

(2) Numbers in tables are rounded to the nearest hundred and hence may not add up to the totals.

(3) In the tables, estimates with coefficient of variation greater than 25% are marked with an asterisk (*) and should be interpreted with caution. For details, please refer to Section 4 of Part II.

PART I : SURVEY RESULTS

1. Introduction

1.1 This report presents the results of the General Household Survey conducted by the Census and Statistics Department during the first quarter (Q1) of 1995.

1.2 The General Household Survey is a sample survey which has been conducted on a continuous basis since August 1981. Its main objective is to collect information on the labour force, unemployment and underemployment.

1.3 The definitions used in the survey for measuring labour force, unemployment and underemployment follow closely those recommended by the International Labour Organization (ILO).

1.4 Part I of this report gives the findings of the survey. Part II outlines the survey methodology. Part III provides the definition of terms adopted for the survey.

2. Summary Statistics⁽¹⁾

	<u>Q1 1994</u>	<u>Q4 1994</u>	<u>Q1 1995</u>
The Labour Force			
Labour force ('000)	2 933.0	3 025.0	2 979.1
Male ('000)	1 837.7	1 886.1	1 849.3
Female ('000)	1 095.2	1 138.8	1 129.8
Labour force participation rate (%)	62.3	62.8	62.2
Male (%)	77.4	77.7	76.7
Female (%)	46.9	47.6	47.6

	<u>Q1 1994</u>	<u>Q4 1994</u>	<u>Q1 1995</u>
Employment			
Employed persons ('000)	2 876.1	2 968.5	2 900.3
Median hours of work in the week before the day of enumeration	48	48	44
Median monthly employment earnings (HK\$)	7,800 ⁽²⁾	8,000	8,200 ⁽²⁾
Unemployment			
Unemployed persons ('000)	56.9	56.5	78.8
Unemployment rate (%)			
- Unadjusted	1.9	1.9	2.6
- Adjusted for seasonal variations in the proportion of first-time job-seekers	2.2	2.0	2.8
Underemployment			
Underemployed persons ('000)	50.1	46.9	42.8
Underemployment rate (%)	1.7	1.5	1.4

Note : (1) All the median figures (including those in the tables) are calculated using ungrouped data, instead of using grouped data as in reports prior to Q1 1993.

(2) Earnings exclude Chinese New Year bonus/double pay.

3. Main Survey Findings

3.1 The main findings of the survey in Q1 1995 are :

- (a) the estimated size of the labour force was 2 979 100 (Table 1.1).
- (b) the estimated number of unemployed persons was 78 800, or 2.6% of the labour force (Table 3.1).
- (c) the unemployment rate, adjusted for seasonal variations in the proportion of first-time job-seekers, was 2.8% (Chart 2).
- (d) the estimated number of underemployed persons was 42 800, or 1.4% of the labour force (Table 4.1 and Chart 4).

4. Labour Force Participation

4.1 The estimated labour force participation rate (LFPR) for Q1 1995 was 62.2%, as against 62.8% for Q4 1994 and 62.3% for Q1 1994. The decrease of 0.6 of a percentage point below Q4 1994 is statistically significant, while the decrease of 0.1 of a percentage point below Q1 1994 is statistically not significant. In absolute terms, the labour force decreased by 45 900 below Q4 1994 but increased by 46 100 over Q1 1994 (Table 1.1 and Chart 1).

4.2 The LFPR for males (76.7%) was significantly higher than that for females (47.6%). There were no marked changes in the patterns of the sex-age-specific LFPRs when compared with Q4 1994 and Q1 1994. In all three quarters, the LFPR was highest in the 30-49 age group for males and in the 20-29 age group for females (Table 1.1).

4.3 The LFPR for never married females for Q1 1995 was 69.0%, which was almost twice as that for ever married females (38.4%) (Table 1.2).

5. Characteristics of the Employed

5.1 The estimated number of employed persons in Q1 1995 was 2 900 300. Of those employed:

- (a) 61.9% were males (Table 2.1).
- (b) the median age of male workers was 37 and that of female workers was 32.

- (c) 89.0% were employees (including outworkers) (Table 2.2).
- (d) 20.6% had primary education and 57.6% had secondary or matriculation education (Table 2.2).
- (e) 43.9% were in the services industry and 27.9% in the wholesale and retail trade, restaurants and hotels sector (Table 2.3).
- (f) 32.2% were in clerical, sales and service occupations and 16.7% in elementary occupations (Table 2.4).
- (g) 15.3% worked less than 35 hours in the week before the day of enumeration. Among them, 73.8% did so because they were on vacation/holiday and 8.8% because of slack work (Tables 2.4 and 2.8).
- (h) the median hours of work in the week before the day of enumeration was 44 (Table 2.5).

5.2 Concerning the employment earnings of employed persons:

- (a) the median monthly employment earnings, excluding Chinese New Year bonus/double pay, was \$8,200 (Table 2.6).
- (b) workers in the financing, insurance, real estate and business services industry had the highest (\$10,000) median monthly employment earnings (excluding Chinese New Year bonus/double pay), while the manufacturing industry and the wholesale and retail trade, restaurants and hotels sector had the lowest (\$8,000) (Table 2.7).
- (c) workers in professional occupations had the highest median monthly employment earnings (excluding Chinese New Year bonus/double pay) (\$23,000), while those in the elementary occupations had the lowest (\$5,000) (Table 2.7).

6. Characteristics of the Unemployed

6.1 The estimated unemployment rate for Q1 1995 was 2.6%. After adjusting for seasonal variations in the proportion of first-time job-seekers, the rate was 2.8%; the corresponding rates for Q4 1994 and Q1 1994 were 2.0% and 2.2% respectively. The increases of 0.8 of a percentage point over Q4 1994 and of 0.6 of a percentage point over Q1 1994 are both statistically significant (Table 3.1 and Chart 2).

6.2 The estimated number of unemployed persons in Q1 1995 was 78 800. Of those unemployed:

- (a) the number of males (53 600) was higher than that of females (25 200) (Table 3.1 and Chart 3).
- (b) 59.7% were aged between 20 and 39 (Table 3.1).
- (c) persons with kindergarten education or no schooling had the highest unemployment rate (Table 3.1).
- (d) 48.1% had been out of work for less than two months. The median duration of unemployment was 66 days (Table 3.2).
- (e) 95.0% were job-seekers. Among them, 26.1% desired to work in the wholesale and retail trade, restaurants and hotels sector and 18.3% in the services industry (Table 3.5).

6.3 Of the 71 700 unemployed persons who had a previous job:

- (a) 29.7% had a previous job in the wholesale and retail trade, restaurants and hotels sector and 29.4% in the manufacturing industry (Table 3.3).
- (b) 24.7% had previously been craft and related workers while 19.1% had previously been sales/service workers (Table 3.3).
- (c) 51.4% had been dismissed or laid off and 36.4% had left their jobs due to job dissatisfaction (Table 3.4).

7. Characteristics of the Underemployed

7.1 The estimated underemployment rate for Q1 1995 was 1.4%, as against 1.5% for Q4 1994 and 1.7% for Q1 1994. The decreases of 0.1 of a percentage point below Q4 1994 and of 0.3 of a percentage point below Q1 1994 are both statistically not significant (Table 4.1 and Chart 4).

7.2 The estimated number of underemployed persons in Q1 1995 was 42 800. Of those underemployed:

- (a) 52.9% had primary education and 39.7% had secondary or matriculation education (Table 4.1).

- (b) 42.9% were in the construction industry and 26.5% were in the manufacturing industry (Table 4.2).
- (c) 41.8% were craft and related workers (Table 4.2).
- (d) 65.3% worked less than 25 hours and 25.4% worked 30-34 hours in the week before the day of enumeration. The median hours of work was 24 (Table 4.3).
- (e) the median monthly employment earnings was \$5,000 (Table 4.3).
- (f) The number of males (31 100) was higher than that of females (11 800). The underemployment rate for males (1.7%) was higher than that for females (1.0%) (Table 4.1 and Chart 5).

Table 1.1 : Labour force by Sex by Age

Sex and age group	Q1 1994		Q4 1994		Q1 1995	
	No. (‘000)	Rate (%)	No. (‘000)	Rate (%)	No. (‘000)	Rate (%)
Male						
15 – 19	45.7	22.4	53.0	26.3	43.4	21.7
20 – 29	431.0	89.8	430.8	89.8	417.1	88.5
30 – 39	607.9	98.7	622.4	98.0	619.4	98.4
40 – 49	421.7	98.1	446.8	97.7	444.0	97.1
50 – 59	228.5	85.1	227.7	84.3	223.9	83.8
60 or over	102.9	27.4	105.5	27.4	101.6	26.2
Overall	1 837.7	77.4	1 886.1	77.7	1 849.3	76.7
Female						
15 – 19	37.3	19.7	39.4	21.0	32.4	17.3
20 – 29	410.1	79.9	416.9	80.5	405.6	79.4
30 – 39	349.4	57.0	374.6	59.1	379.0	60.5
40 – 49	196.7	51.6	206.8	50.9	207.6	51.1
50 – 59	76.3	34.4	78.3	35.3	79.1	36.1
60 or over	25.4	6.1	22.8	5.4	26.0	6.1
Overall	1 095.2	46.9	1 138.8	47.6	1 129.8	47.6
Both Sexes						
15 – 19	83.0	21.1	92.4	23.7	75.8	19.6
20 – 29	841.1	84.7	847.7	85.0	822.7	83.8
30 – 39	957.3	77.9	997.0	78.6	998.4	79.5
40 – 49	618.4	76.2	653.6	75.7	651.6	75.5
50 – 59	304.9	62.1	306.0	62.2	303.0	62.3
60 or over	128.3	16.2	128.2	15.9	127.5	15.7
Overall	2 933.0	62.3	3 025.0	62.8	2 979.1	62.2

Table 1.2 : Female labour force by Marital status by Age

Marital status and age group	Q1 1994		Q4 1994		Q1 1995	
	No. (’000)	Rate (%)	No. (’000)	Rate (%)	No. (’000)	Rate (%)
Never married						
15 – 19	35.9	19.3	38.5	20.7	32.1	17.2
20 – 29	310.7	87.4	318.7	89.0	312.9	86.8
30 – 39	104.1	93.8	113.5	95.1	117.8	95.8
40 or over	23.8	72.2	26.2	64.0	26.8	66.9
Overall	474.5	69.2	496.9	70.5	489.6	69.0
Ever married						
15 – 19	1.4 *	50.0 *	0.9 *	66.7 *	0.3 *	40.0 *
20 – 29	99.4	62.9	98.2	61.4	92.7	61.9
30 – 39	245.4	48.8	261.2	50.8	261.2	51.9
40 or over	274.6	27.8	281.6	27.9	285.9	28.3
Overall	620.7	37.6	641.9	38.1	640.2	38.4

Table 2.1 : Employed persons by Sex by Age

Sex and age group	Q1 1994		Q4 1994		Q1 1995	
	No. (‘000)	%	No. (‘000)	%	No. (‘000)	%
Male						
15 – 19	41.8	2.3	47.2	2.6	39.4	2.2
20 – 29	419.1	23.3	418.9	22.7	400.6	22.3
30 – 39	599.1	33.3	613.4	33.2	605.2	33.7
40 – 49	413.6	23.0	440.5	23.9	433.1	24.1
50 – 59	222.8	12.4	222.5	12.0	216.8	12.1
60 or over	101.9	5.7	104.1	5.6	100.6	5.6
Total	1 798.3	100.0	1 846.6	100.0	1 795.7	100.0
Female						
15 – 19	34.9	3.2	36.1	3.2	29.5	2.7
20 – 29	402.2	37.3	410.1	36.6	394.6	35.7
30 – 39	345.6	32.1	370.9	33.1	373.7	33.8
40 – 49	193.9	18.0	204.5	18.2	203.8	18.5
50 – 59	75.9	7.1	77.7	6.9	77.3	7.0
60 or over	25.2	2.3	22.6	2.0	25.6	2.3
Total	1 077.8	100.0	1 121.9	100.0	1 104.6	100.0
Both Sexes						
15 – 19	76.7	2.7	83.3	2.8	68.9	2.4
20 – 29	821.3	28.6	829.0	27.9	795.3	27.4
30 – 39	944.7	32.8	984.3	33.2	978.9	33.7
40 – 49	607.5	21.1	644.9	21.7	636.9	22.0
50 – 59	298.7	10.4	300.2	10.1	294.2	10.1
60 or over	127.1	4.4	126.8	4.3	126.2	4.4
Total	2 876.1	100.0	2 968.5	100.0	2 900.3	100.0

Table 2.2 : Employed persons by Activity status and Educational attainment

	Q1 1994		Q4 1994		Q1 1995	
	No. ('000)	%	No. ('000)	%	No. ('000)	%
Activity status						
Employees	2 562.2	89.1	2 643.4	89.0	2 580.7	89.0
Employers	157.4	5.5	168.5	5.7	161.2	5.6
Self-employed	134.6	4.7	137.2	4.6	142.6	4.9
Unpaid family workers	21.9	0.7	19.4	0.7	15.8	0.5
Total	2 876.1	100.0	2 968.5	100.0	2 900.3	100.0
Educational attainment						
No schooling/ Kindergarten	82.8	2.9	81.5	2.7	80.2	2.8
Primary	658.7	22.9	629.2	21.2	598.8	20.6
Secondary/ Matriculation	1 680.7	58.4	1 712.6	57.7	1 670.9	57.6
Tertiary						
– non-degree	215.7	7.5	248.8	8.4	257.9	8.9
– degree	238.3	8.3	296.3	10.0	292.5	10.1
Total	2 876.1	100.0	2 968.5	100.0	2 900.3	100.0

Table 2.3 : Employed persons by Industry

Industry	Q1 1994		Q4 1994		Q1 1995	
	No. ('000)	%	No. ('000)	%	No. ('000)	%
Manufacturing	<u>593.2</u>	<u>20.6</u>	<u>558.3</u>	<u>18.8</u>	<u>554.8</u>	<u>19.1</u>
Construction	<u>217.4</u>	<u>7.6</u>	<u>235.0</u>	<u>7.9</u>	<u>222.0</u>	<u>7.7</u>
Wholesale and retail trade, restaurants and hotels	<u>835.6</u>	<u>29.0</u>	<u>849.0</u>	<u>28.6</u>	<u>810.5</u>	<u>27.9</u>
Services	<u>1 196.2</u>	<u>41.6</u>	<u>1 281.3</u>	<u>43.2</u>	<u>1 272.6</u>	<u>43.9</u>
Transport, storage and communication	344.6	12.0	339.3	11.4	325.8	11.2
Financing, insurance, real estate and business services	316.0	11.0	342.8	11.6	343.5	11.9
Community, social and personal services	535.7	18.6	599.2	20.2	603.3	20.8
Others	<u>33.7</u>	<u>1.2</u>	<u>44.9</u>	<u>1.5</u>	<u>40.4</u>	<u>1.4</u>
Total	2 876.1	100.0	2 968.5	100.0	2 900.3	100.0

Table 2.4 : Employed persons by Occupation and Hours of work

	Q1 1994		Q4 1994		Q1 1995	
	No. (^{'000})	%	No. (^{'000})	%	No. (^{'000})	%
Occupation						
Administrative and managerial workers	267.2	9.3	245.6	8.3	210.5	7.3
Professionals	124.8	4.3	150.8	5.1	155.3	5.3
Associate professionals	308.7	10.7	389.7	13.1	415.3	14.3
Clerks	560.2	19.5	556.0	18.7	529.7	18.3
Sales/service workers	401.7	14.0	419.0	14.1	405.3	14.0
Craft and related workers	358.1	12.5	365.3	12.3	350.9	12.1
Plant and machine operators and assemblers	363.7	12.6	331.2	11.2	331.9	11.4
Elementary occupations	478.7	16.6	492.1	16.6	485.2	16.7
Others	12.9	0.5	18.8	0.6	16.2	0.6
Total	2 876.1	100.0	2 968.5	100.0	2 900.3	100.0
Hours of Work						
Under 20	159.8	5.6	51.5	1.7	215.7	7.5
20 – 29	134.0	4.7	64.7	2.2	139.2	4.8
30 – 34	69.7	2.4	50.3	1.7	89.2	3.1
35 – 39	214.4	7.5	290.2	9.8	343.1	11.8
40 – 44	765.1	26.6	793.9	26.7	682.3	23.5
45 – 49	942.0	32.7	892.6	30.1	714.5	24.6
50 – 54	216.8	7.5	339.3	11.4	281.9	9.7
55 – 59	31.0	1.1	56.5	1.9	47.9	1.7
60 or over	343.4	11.9	429.4	14.5	386.4	13.3
Total	2 876.1	100.0	2 968.5	100.0	2 900.3	100.0

**Table 2.5 : Median hours of work of employed persons
by Industry**

Industry	Q1 1994	Q4 1994	Q1 1995
	Hours	Hours	Hours
Manufacturing	48	48	44
Construction	48	48	45
Wholesale and retail trade, restaurants and hotels	48	48	48
Transport, storage and communication	48	48	48
Financing, insurance, real estate and business services	44	44	41
Community, social and personal services	48	48	45
Others	44	48	44
Overall	48	48	44

Table 2.6 : Employed persons by Monthly employment earnings

Monthly employment earnings (HK\$)	Q1 1994 ⁽¹⁾		Q1 1995 ⁽¹⁾		Q4 1994		Q1 1995 ⁽²⁾	
	No. ('000)	%	No. ('000)	%	No. ('000)	%	No. ('000)	%
Under 3,000	83.8	2.9	71.3	2.5	77.1	2.6	73.0	2.5
3,000 – 3,999	164.6	5.7	162.6	5.6	165.8	5.6	170.0	5.9
4,000 – 4,999	164.3	5.7	123.6	4.3	150.0	5.0	145.1	5.0
5,000 – 5,999	221.7	7.7	157.4	5.4	221.3	7.5	194.5	6.7
6,000 – 6,999	326.0	11.3	234.1	8.1	309.2	10.4	288.4	9.9
7,000 – 7,999	317.1	11.0	259.4	8.9	337.1	11.4	320.6	11.1
8,000 – 8,999	306.4	10.7	297.1	10.2	353.5	11.9	358.6	12.4
9,000 – 9,999	146.7	5.1	159.0	5.5	193.0	6.5	179.5	6.2
10,000 – 14,999	528.0	18.4	592.5	20.4	583.3	19.6	568.9	19.6
15,000 – 19,999	250.5	8.7	319.1	11.0	226.1	7.6	238.6	8.2
20,000 or over	367.1	12.8	524.2	18.1	352.0	11.9	363.2	12.5
Total	2 876.1	100.0	2 900.3	100.0	2 968.5	100.0	2 900.3	100.0
Median (HK\$)	8,000		9,500		8,000		8,200	

Notes : (1) Earnings include Chinese New Year bonus/double pay.

(2) Earnings exclude Chinese New Year bonus/double pay.

**Table 2.7 : Median monthly employment earnings
by Industry and Occupation of main employment**

	Q1 1994 ⁽¹⁾	Q1 1995 ⁽¹⁾	Q4 1994	Q1 1995 ⁽²⁾
	(HK\$)	(HK\$)	(HK\$)	(HK\$)
Industry				
Manufacturing	7,500	8,500	7,500	8,000
Construction	8,000	9,000	8,500	8,500
Wholesale and retail trade, restaurants and hotels	8,000	9,000	8,000	8,000
Transport, storage and communication	8,500	10,000	8,500	9,000
Financing, insurance, real estate and business services	11,000	14,000	10,000	10,000
Community, social and personal services	8,000	8,800	8,100	8,300
Others	8,200	10,000	9,700	9,000
Overall	8,000	9,500	8,000	8,200
Occupation				
Administrative and managerial workers	20,000	25,000	20,000	20,000
Professionals	23,000	28,000	22,000	23,000
Associate professionals	13,000	15,000	12,000	12,000
Clerks	8,000	9,000	8,000	8,000
Sales/service workers	8,000	8,500	8,000	8,000
Craft and related workers	8,000	9,000	8,000	8,000
Plant and machine operators and assemblers	7,500	8,000	8,000	8,000
Elementary occupations	5,000	5,100	5,000	5,000
Others	5,500	5,500	5,000	5,500
Overall	8,000	9,500	8,000	8,200

Notes : (1) Earnings include Chinese New Year bonus/double pay.

(2) Earnings exclude Chinese New Year bonus/double pay.

**Table 2.8 : Employed persons who worked less than 35 hours
by Reason for working less than 35 hours**

Reason for working less than 35 hours	Q1 1994		Q4 1994		Q1 1995	
	No. ('000)	%	No. ('000)	%	No. ('000)	%
On vacation / holiday	247.6	68.1	40.9	24.5	327.7	73.8
Slack work	47.6	13.1	42.8	25.7	39.0	8.8
Too busy with housework, schoolwork, personal business, etc.	35.2	9.7	40.4	24.2	38.5	8.7
@ Full-time work less than 35 hours per week	14.6	4.0	19.0	11.4	17.4	3.9
Chronic disease, disablement, old age, partially retired	9.7	2.7	10.5	6.3	6.9	1.5
Other reasons	8.6	2.4	13.1	7.9	14.6	3.3
Total	363.4	100.0	166.6	100.0	444.1	100.0

Note : @ This category refers to full-time workers who were scheduled to work less than 35 hours in the week before enumeration, and persons who worked in industries/occupations whose standard hours of work were less than 35 hours.

Table 3.1 : Unemployed persons by Age, Sex and Educational attainment

	Q1 1994		Q4 1994		Q1 1995	
	No. ('000)	Rate (%)	No. ('000)	Rate (%)	No. ('000)	Rate (%)
Age group						
15 – 19	6.3	7.6	9.1	9.8	6.9	9.1
20 – 29	19.8	2.4	18.7	2.2	27.4	3.3
30 – 39	12.6	1.3	12.7	1.3	19.6	2.0
40 – 49	10.9	1.8	8.7	1.3	14.8	2.3
50 – 59	6.2	2.0	5.8	1.9	8.8	2.9
60 or over	1.2 *	0.9 *	1.5 *	1.1 *	1.3 *	1.0 *
Overall	56.9	1.9	56.5	1.9	78.8	2.6
Sex						
Male	39.4	2.1	39.5	2.1	53.6	2.9
Female	17.5	1.6	17.0	1.5	25.2	2.2
Overall	56.9	1.9	56.5	1.9	78.8	2.6
Educational attainment						
No schooling/ Kindergarten	2.5 *	2.9 *	1.5 *	1.8 *	2.8 *	3.4 *
Primary	15.3	2.3	12.0	1.9	20.4	3.3
Secondary/ Matriculation	33.1	1.9	36.5	2.1	46.6	2.7
Tertiary						
– non-degree	2.9	1.3	2.5	1.0	3.3	1.3
– degree	3.1	1.3	4.1	1.4	5.7	1.9
Overall	56.9	1.9	56.5	1.9	78.8	2.6

Table 3.2 : Unemployed persons by Duration of unemployment

Duration of unemployment (Months)	Q1 1994		Q4 1994		Q1 1995	
	No. ('000)	%	No. ('000)	%	No. ('000)	%
Less than 1	17.1	30.0	10.8	19.1	21.2	26.8
1 - < 2	10.3	18.1	10.5	18.6	16.7	21.2
2 - < 3	8.9	15.7	11.3	20.0	9.9	12.6
3 - < 6	10.8	18.9	11.0	19.5	16.8	21.3
6 or over	9.8	17.3	12.9	22.8	14.3	18.1
Total	56.9	100.0	56.5	100.0	78.8	100.0
Median (Days)	65		80		66	

**Table 3.3 : Unemployed persons having had a previous job
by Previous industry and occupation**

	Q1 1994		Q4 1994		Q1 1995	
	No. ('000)	%	No. ('000)	%	No. ('000)	%
Previous industry						
Manufacturing	15.1	29.4	15.1	31.7	21.1	29.4
Construction	7.9	15.4	6.6	13.9	13.8	19.2
Wholesale and retail trade, restaurants and hotels	15.7	30.6	14.2	29.7	21.3	29.7
Services	12.5	24.3	11.6	24.3	15.1	21.1
Others	0.1 *	0.3 *	0.2 *	0.4 *	0.4 *	0.6 *
Total	51.3	100.0	47.7	100.0	71.7	100.0
Previous occupation						
Administrative and managerial workers, professionals and associate professionals	5.9	11.5	6.3	13.1	7.8	10.9
Clerks	7.3	14.2	5.8	12.2	9.0	12.6
Sales/service workers	8.6	16.7	8.5	17.8	13.7	19.1
Craft and related workers	11.0	21.4	10.6	22.2	17.7	24.7
Plant and machine operators and assemblers	9.9	19.4	7.8	16.3	9.8	13.7
Others	8.6	16.8	8.8	18.4	13.6	19.0
Total	51.3	100.0	47.7	100.0	71.7	100.0

**Table 3.4 : Unemployed persons having had a previous job
by Reason for unemployment**

Reason for unemployment	Q1 1994		Q4 1994		Q1 1995	
	No. ('000)	%	No. ('000)	%	No. ('000)	%
Dissatisfied with job (e.g. poor pay, working conditions)	19.5	38.1	18.7	39.2	26.1	36.4
Lost job or laid off	24.3	47.3	23.2	48.7	36.9	51.4
Others	7.5	14.6	5.8	12.1	8.8	12.2
Total	51.3	100.0	47.7	100.0	71.7	100.0

Table 3.5 : Job-seekers by Desired industry of employment

Desired industry of employment	Q1 1994		Q4 1994		Q1 1995	
	No. ('000)	%	No. ('000)	%	No. ('000)	%
Manufacturing	9.9	18.6	9.0	16.5	13.6	18.2
Construction	6.8	12.9	5.1	9.4	11.8	15.8
Wholesale and retail trade, restaurants and hotels	14.7	27.7	15.8	29.0	19.5	26.1
Services	11.1	20.9	12.8	23.5	13.7	18.3
No preference/Others	10.5	19.9	11.8	21.6	16.1	21.6
Total	53.1	100.0	54.6	100.0	74.9	100.0

Table 4.1 : Underemployed persons by Age, Sex and Educational attainment

	Q1 1994		Q4 1994		Q1 1995	
	No. ('000)	Rate (%)	No. ('000)	Rate (%)	No. ('000)	Rate (%)
Age group						
15 – 19	0.1 *	0.2 *	0.7 *	0.8 *	0.7 *	0.9 *
20 – 29	10.2	1.2	6.0	0.7	5.2	0.6
30 – 39	18.3	1.9	16.2	1.6	15.0	1.5
40 – 49	10.6	1.7	15.4	2.4	14.0	2.2
50 – 59	7.5	2.5	6.4	2.1	5.3	1.8
60 or over	3.3	2.5	2.2	1.7	2.6	2.0
Overall	50.1	1.7	46.9	1.5	42.8	1.4
Sex						
Male	34.4	1.9	37.1	2.0	31.1	1.7
Female	15.7	1.4	9.8	0.9	11.8	1.0
Overall	50.1	1.7	46.9	1.5	42.8	1.4
Educational attainment						
No schooling/ Kindergarten	2.3	2.7	3.1	3.7	2.4	2.9
Primary	25.5	3.8	21.4	3.3	22.7	3.7
Secondary/ Matriculation	21.4	1.2	21.9	1.3	17.0	1.0
Tertiary						
– non-degree	0.6 *	0.3 *	0.3 *	0.1 *	0.4 *	0.2 *
– degree	0.3 *	0.1 *	0.2 *	0.1 *	0.3 *	0.1 *
Overall	50.1	1.7	46.9	1.5	42.8	1.4

Table 4.2 : Underemployed persons by Industry and Occupation

	Q1 1994		Q4 1994		Q1 1995	
	No. ('000)	%	No. ('000)	%	No. ('000)	%
Industry						
Manufacturing	19.7	39.3	12.6	26.9	11.3	26.5
Construction	19.6	39.1	21.3	45.4	18.4	42.9
Wholesale and retail trade, restaurants and hotels	1.6 *	3.2 *	3.4	7.3	3.3	7.7
Services	9.2	18.4	9.6	20.4	9.8	22.9
Others	—	—	—	—	—	—
Total	50.1	100.0	46.9	100.0	42.8	100.0
Occupation						
Administrative and managerial workers, professionals, associate professionals and clerks	1.4 *	2.8 *	2.7	5.7	1.1 *	2.5 *
Sales/service workers	1.8 *	3.5 *	3.2	6.9	3.1	7.3
Craft and related workers	17.9	35.7	20.0	42.6	17.9	41.8
Plant and machine operators and assemblers	16.8	33.6	8.4	17.9	8.5	19.9
Others	12.2	24.4	12.6	26.9	12.2	28.5
Total	50.1	100.0	46.9	100.0	42.8	100.0

Table 4.3 : Underemployed persons by Hours of work and Monthly employment earnings

	Q1 1994 ⁽¹⁾		Q1 1995 ⁽¹⁾		Q4 1994		Q1 1995 ⁽²⁾	
	No. (‘000)	%	No. (‘000)	%	No. (‘000)	%	No. (‘000)	%
Hours of work								
Under 20	13.9	27.8			11.9	25.4	16.8	39.3
20 – 24	18.3	36.6			17.0	36.2	11.1	26.0
25 – 29	0.9	1.8			3.9	8.3	4.0	9.3
30 – 34	16.9	33.8			14.1	30.1	10.9	25.4
Total	50.1	100.0			46.9	100.0	42.8	100.0
Median (Hours)	24				24		24	
Monthly employment earnings (HK\$)								
Under 2,000	2.7	5.5	3.7	8.6	2.8	6.0	3.7	8.6
2,000 – 2,999	7.5	14.9	4.7	11.0	6.9	14.7	4.7	11.0
3,000 – 3,999	10.3	20.5	7.7	18.0	5.8	12.4	7.7	18.1
4,000 – 4,999	10.2	20.4	5.0	11.6	7.4	15.8	5.0	11.6
5,000 – 5,999	7.1	14.2	4.6	10.7	5.7	12.2	4.6	10.7
6,000 – 6,999	4.6	9.1	5.2	12.2	7.0	14.9	5.2	12.2
7,000 – 7,999	2.1	4.2	4.1	9.7	4.7	10.1	4.3	10.0
8,000 or over	5.6	11.2	7.8	18.2	6.5	13.9	7.6	17.8
Overall	50.1	100.0	42.8	100.0	46.9	100.0	42.8	100.0
Median (HK\$)	4,000		5,000		5,000		5,000	

Notes : (1) Earnings include Chinese New Year bonus/double pay.

(2) Earnings exclude Chinese New Year bonus/double pay.

Chart 1: Labour Force Participation Rates

- 24 -

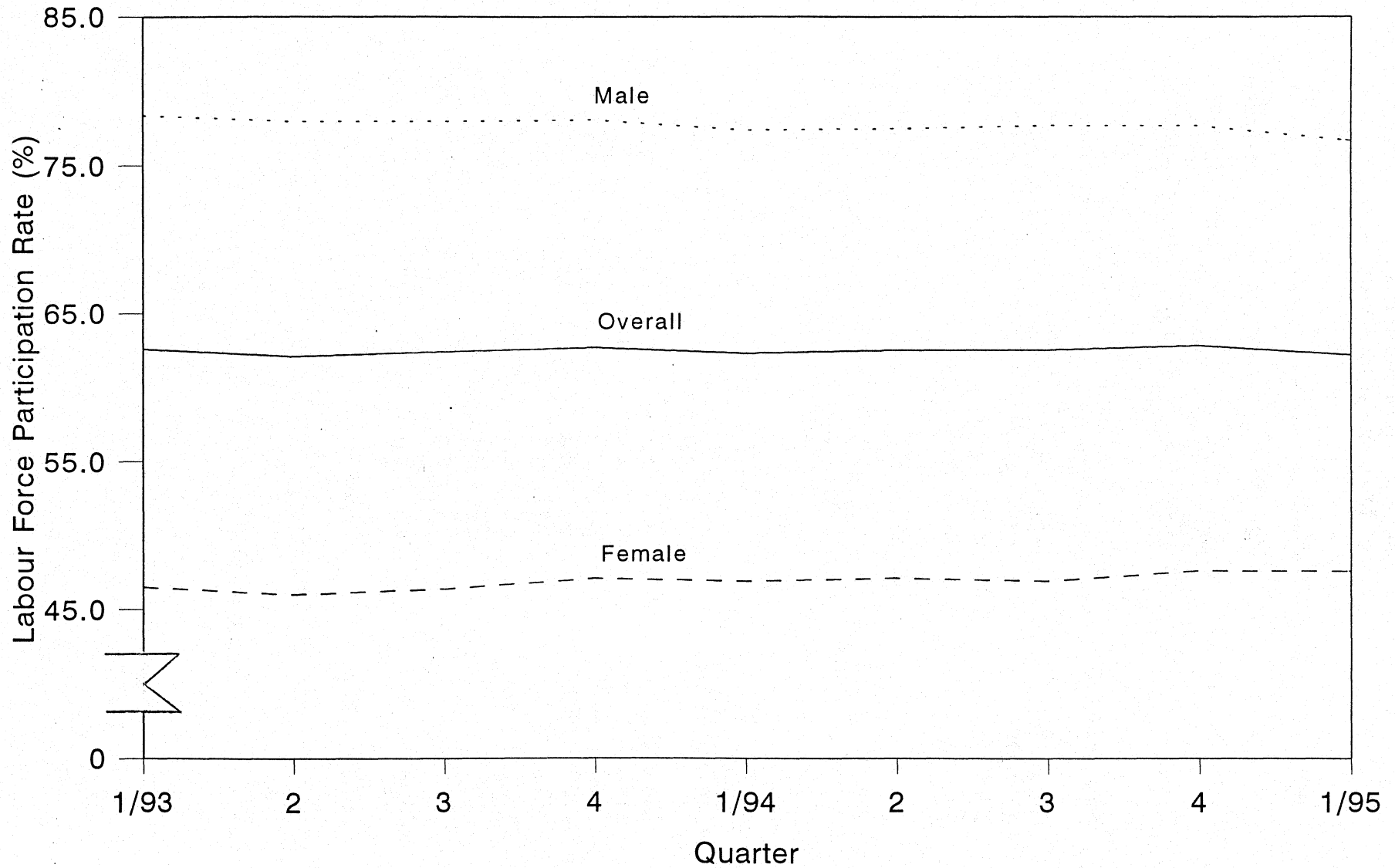
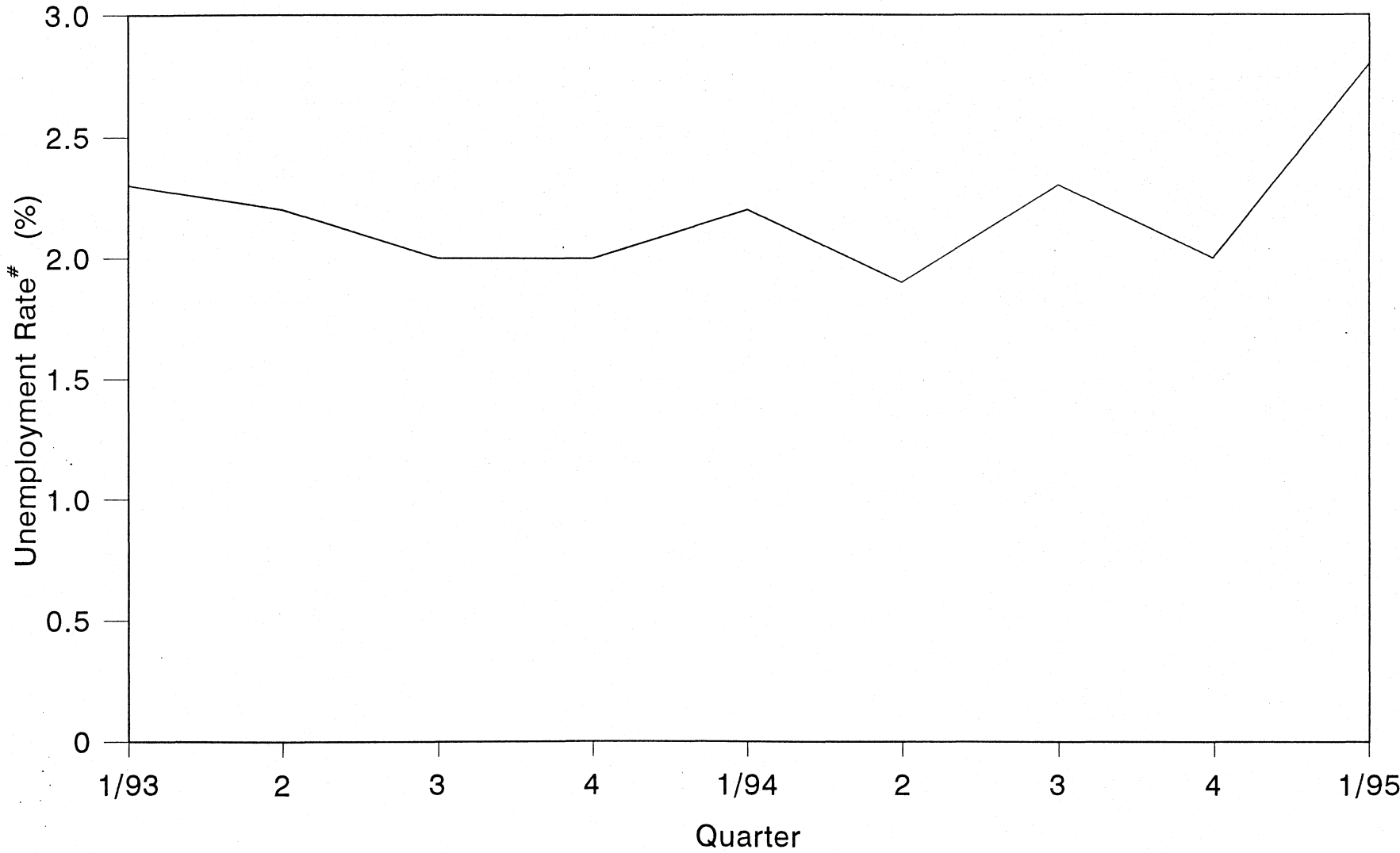


Chart 2: Unemployment Rates[#]



- 25 -

Adjusted for seasonal variations in the proportion of first-time job-seekers.

Chart 3: Unemployed Persons

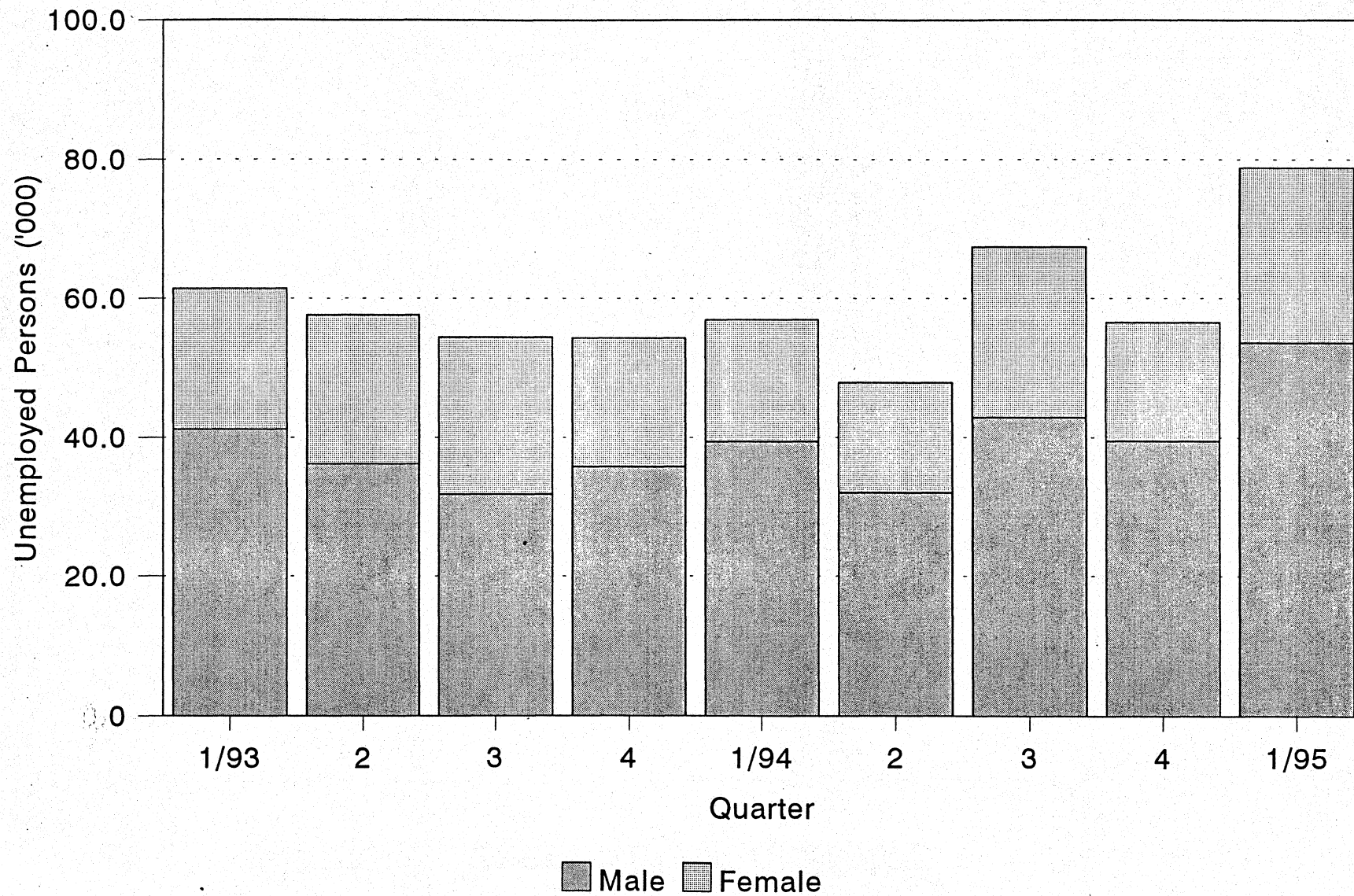


Chart 4: Underemployment Rates

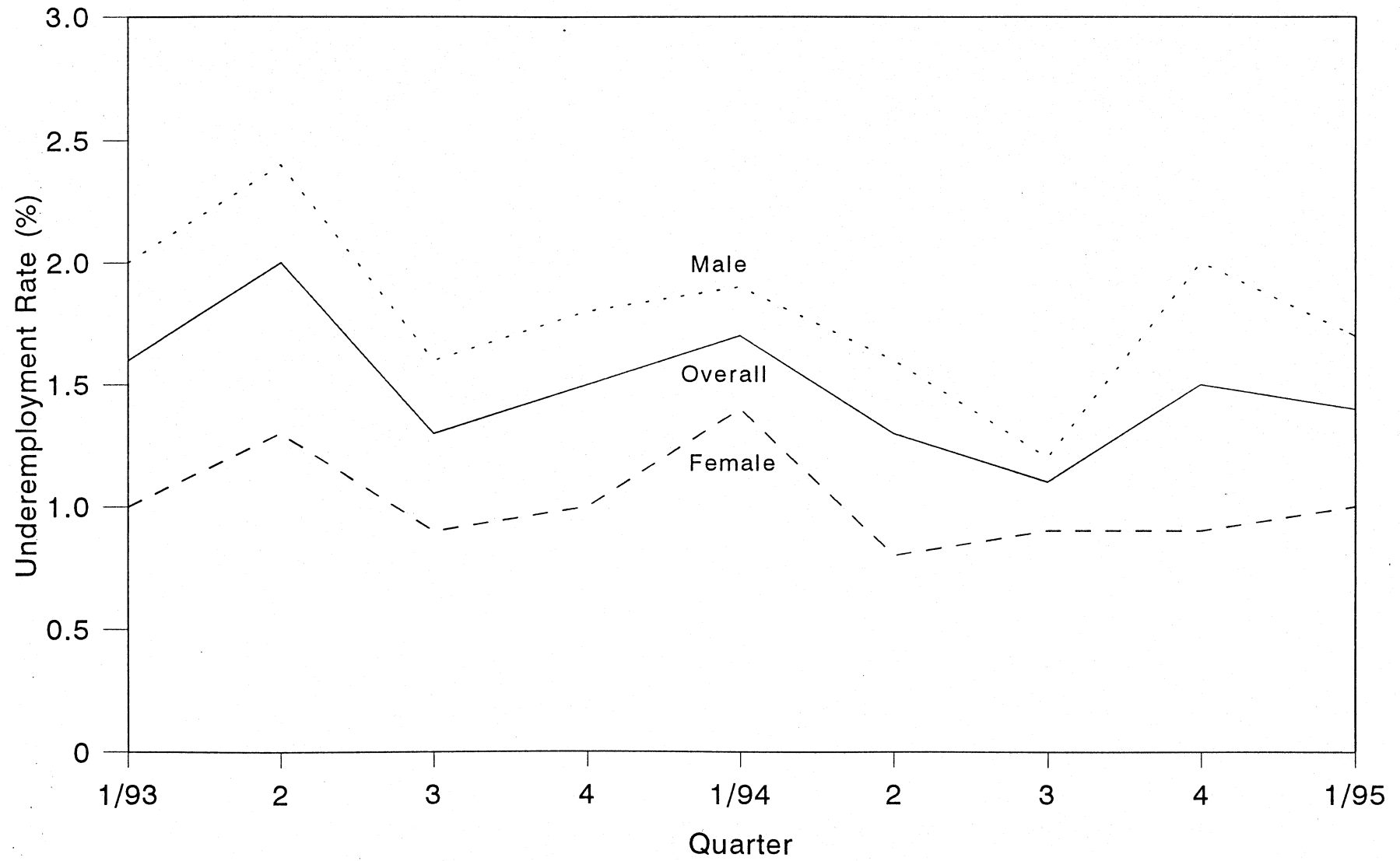
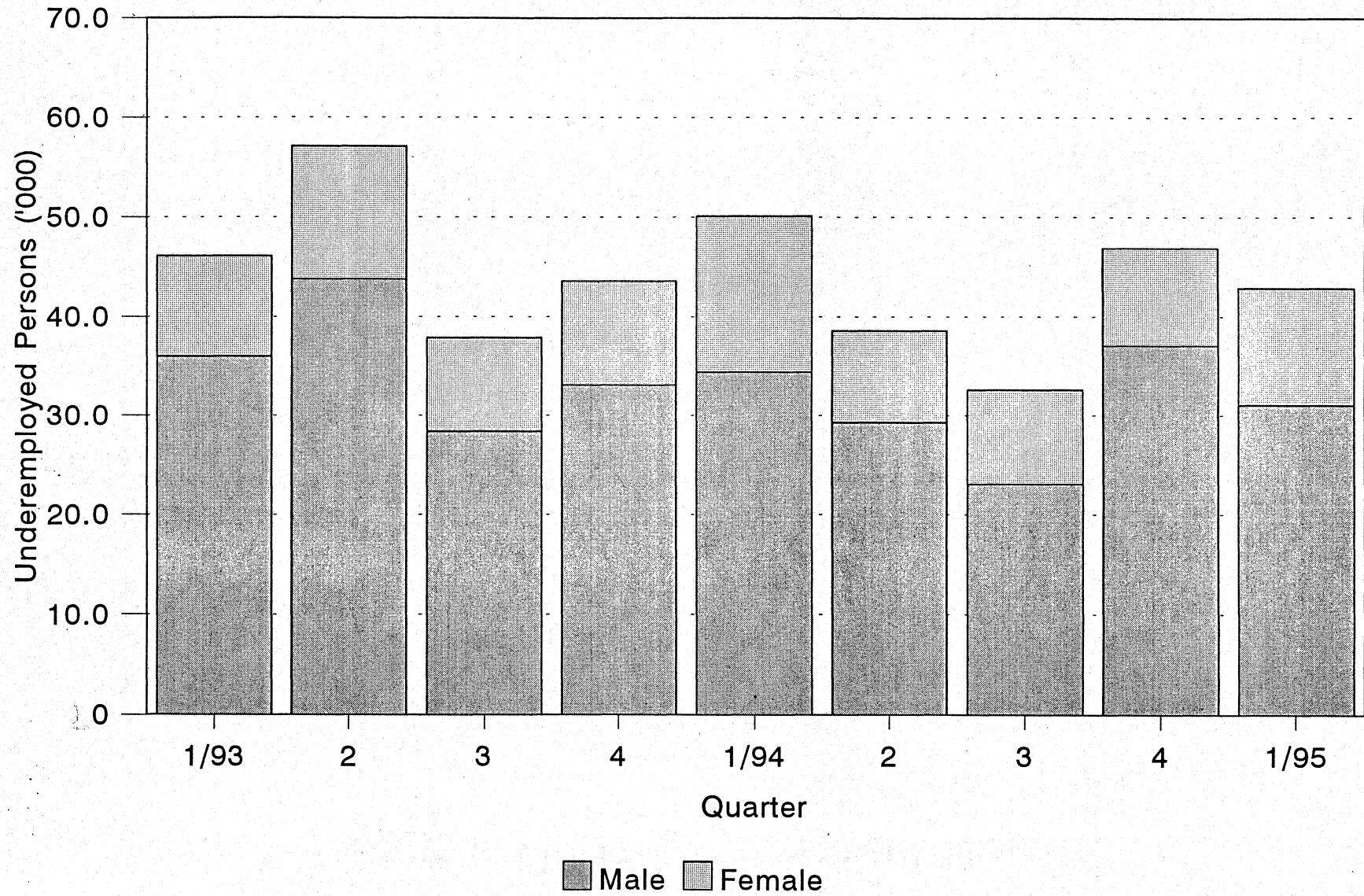


Chart 5: Underemployed Persons



PART II : SURVEY METHODOLOGY

1. Coverage of Survey and Sample Design

1.1 The General Household Survey in Q1 1995 was based on a sample of some 15 000 quarters selected scientifically from the Computerized Frame of Quarters which contains records of all permanent and temporary structures in Hong Kong. The sampling units were:

- a) quarters for permanent structures; and
- b) segments for temporary structures (i.e. geographic areas each containing about 10 - 12 structures).

1.2 The survey covered the land-based civilian non-institutional population and thus did not cover:

- a) hotel transients and inmates of institutions;
- b) military personnel and their dependents; and
- c) persons living on board vessels.

1.3 The survey was conducted on a continuous basis. A rotational sample design was adopted such that about half of the sample in Q1 1995 were enumerated three months ago. Information on personal, labour force and household characteristics was collected from all persons in the sampled quarters. A 'shifting survey moment' or 'yesterday' approach was applied (e.g. the labour force characteristics of these persons related to the week before the day of enumeration).

2. The Questionnaire

2.1 The questionnaire was designed to collect detailed information on labour force characteristics. The concepts and definitions used to measure employment, unemployment and underemployment follow closely the recommendations of the International Labour Organization (ILO).

2.2 Data items included in the questionnaire were:

Household information

1. Type of living quarters
2. Number of households in the quarters
3. Type of household
4. Type of accommodation
5. Tenure
6. Monthly household rent
7. Number of persons in the household at the reference night
8. Number of persons usually living in the household

Personal information

9. Relationship to head of household
10. Whereabouts at reference night
11. Whether usually living in the household
12. Age
13. Sex
14. Marital status
15. Educational attainment
16. Activity status during the last 7 days
17. Non-employment income in the last month

Employment information

18. Industry
19. Occupation
20. Number of hours worked during the last 7 days
21. Employment earnings in the last month

Underemployment information

22. Number of hours usually worked in a week
23. Reason for working less than 35 hours during the last 7 days
24. Whether available for additional work in the last 7 days
25. Whether seeking additional work during the last 30 days
26. Action taken to seek additional work

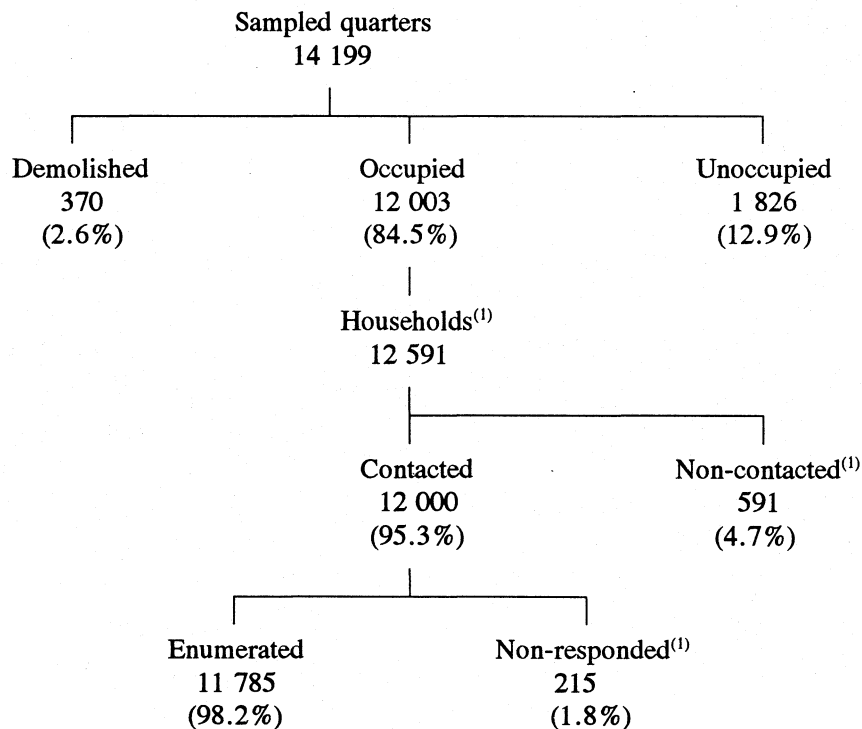
Unemployment information

27. Whether available for work during the last 7 days
28. Reason for not available for work
29. Whether seeking for work during the last 30 days
30. Reason for not seeking work
31. Action taken to seek work
32. Duration of unemployment
33. Reason for leaving previous job
34. Previous occupation
35. Previous industry
36. Industry intended to work in

3. Enumeration Experience

3.1 Of the 14 199 sampled living quarters, 2.6% (370) were demolished, 84.5% (12 003) were occupied, and the remaining 12.9% (1 826) were unoccupied.

3.2 A total of 12 591 households were enumerated in the 12 003 occupied living quarters. The enumeration experience of the survey is summarized below:



(1) Assuming that for living quarters which were non-contacted/non-responded, each of them contained only one household.

3.3 A self-administered questionnaire was left behind for those households which could not be contacted during the survey month to complete and return by mail. A total of 169 such questionnaires were received covering 479 persons. The following table compares the labour force characteristics of these persons with those successfully enumerated.

Sample Statistics on Labour Force Characteristics

	<u>Enumerated</u>	<u>Self-administered</u>
No. of persons		
Aged under 15	7 537	76
Aged 15 or over	32 547	403
Economically active		
Employed	19 237	271
Unemployed	522	12
Labour force participation rate (%)	60.7	70.2
Unemployment rate (%)	2.6	4.2

4. Reliability of the Estimates

4.1 Results of the General Household Survey are subject to sampling error and non-sampling error. The estimates in this report were based on information obtained from a particular sample, which was one of a large number of possible samples of the same size that could be selected using the same sample design. By chance, estimates derived from the different samples would differ from each other. The "sampling error" is a measure of these variations and thus is a measure of the precision with which an estimate derived from a particular sample would approximate the population parameter to be measured.

4.2 For comparing the precision of the estimates of various variables in this report, the coefficient of variation (CV) is used. CV is obtained by expressing the standard error as a percentage of the estimate to which it refers. In turn, the standard error is computed according to a formula which is established on the basis of statistical theory. Generally speaking, this is related to the variability of the elements in the population, the size of the sample and the sample design adopted for the survey.

4.3 In this report, estimates with CV greater than 25% are marked with an asterisk (*). They should be interpreted with caution.

4.4 The coefficients of variation of the estimates of the main variables are given below:

<u>Variable</u>	<u>Sample estimate</u>	<u>CV(%)</u>
Labour force	2 979 100	0.3
Unemployed persons	78 800	5.2
Underemployed persons	42 800	5.4
Labour force participation rate	62.2%	0.3
Unemployment rate	2.6%	5.2
Underemployment rate	1.4%	5.4

PART III : DEFINITION OF TERMS

Activity status (Please see **Labour force**).

Age refers to the number of complete years a person has passed since his/her birth date.

Economically active population

The whole population can be divided into two groups, viz. the economically active population and the economically inactive population.

The economically active population, synonymous with the labour force, comprises the employed population and the unemployed population. (Please see **Labour force** for details)

The economically inactive population is made up of those persons who have not had a job and have not been at work during the seven days before enumeration, excluding persons who have been on leave/holiday during the seven-day period and persons who are unemployed. Persons such as home-makers, retired persons and all those below the age of 15 are thus included.

Educational attainment refers to the highest level of education attained by a person in an educational institution regardless of whether he/she had completed the course. Only formal courses are counted as educational attainment. A formal course must satisfy the following criteria:

1. It lasts for at least one academic year.
2. It has specific academic qualifications for entrance (except degree courses offered by the Open Learning Institute).
3. It adopts examinations to assess the academic achievement.

Industry refers to the main kind of goods or services produced by the establishment in which the respondent worked during the seven days before enumeration. The classification used follows the major divisions of the Hong Kong Standard Industrial Classification (1991).

Manufacturing - including spinning of cotton and other yarn, weaving and knitting of cotton and other fabrics; bleaching, dyeing, finishing; manufacturing of wearing apparel, knitwear and other made-up textile goods; and manufacturing of carpets, cordage, ropes and twines, food, beverage, tobacco, footwear, leather products, rubber products, plastic products, wood products, printed matters and paper products, metal products, machinery, chemicals, chemical products, glass and pottery.

Construction - including building construction, civil engineering, plumbing, electrical wiring, air-conditioning installation and repair.

Wholesale and retail trade, restaurants and hotels - including wholesale and retail trade; import and export trade; peddlers; Chinese general brokers; other commercial agents; restaurants; cafes; hotels and rooming houses.

Transport, storage and communication - including land transport, water transport and air transport; services allied to transport; storage and warehousing; and post and telecommunications.

Financing, insurance, real estate and business services - including financing; insurance; real estate; offices of lawyers, accountants, auditors, architects, surveyors and advertising agents and data processing services.

Community, social and personal services - including government services; the armed forces; educational service; medical, dental and other health services; sanitary services; welfare institutions; religious organizations; cinemas and theatres; radio and television broadcasting; libraries and museums; electrical repair shops; automobile repair garages and other household and personal services.

Others - including such industries as 'Agriculture and fishing'; 'Mining and quarrying'; 'Electricity, gas and water' and industrial activities inadequately described or unclassifiable.

Labour force refers to the land-based civilian non-institutional population aged 15 or over who have fulfilled the criteria for inclusion in the employed population or the unemployed population as defined below. Hotel transients, inmates of institutions, military personnel and their dependents, and persons living on board vessels are excluded.

Employed population

- 1) This comprises all employed persons. For a person aged 15 or over to be classified as employed, that person has to:

- a) be engaged in performance of some work for pay or profit during the seven days before enumeration; or
- b) have formal job attachment (i.e. that the person has continued receipt of wage or salary; or has an assurance or an agreed date of return to job or business; or is in receipt of compensation without obligation to accept another job).

2) Employed persons can be categorized into:

Self-employed: A person who works for profit or fees in his/her own business/profession, neither employed by someone nor employing others.

Employer: A person who works for profit or fees in his/her own business/profession and employs one or more persons to work for him/her.

Employee: A person who works for an employer (private companies or government) for wage, salary, commissions, tips, piece rates, or pay in kind. This includes outworker, domestic helper and paid family worker.

Unpaid family worker: A person who works without pay for a related member in a family business. Food and lodging and pocket money are not counted as pay. However, if the worker receives regular pay for the work performed, he/she should be considered as an employee.

- 3) Apprentices who received pay in cash or in kind are considered as employed.
- 4) Volunteer workers who performed some work but did not receive any payment in cash or in kind, and did not have a job or an enterprise are not considered as employed.

Unemployed population

- 1) This comprises all unemployed persons. For a person aged 15 or over to be classified as unemployed, that person should be one:
 - a) without a job and who has not performed any work for pay or profit during the seven days before enumeration; and
 - b) available for work during the seven days before enumeration; and

- c) who has sought work during the thirty days before enumeration.
- 2) Notwithstanding the above, the following persons are considered as unemployed:
- a) persons without a job, are seeking work but are not available for work because of temporary sickness; and
 - b) persons without a job, are available for work but are not seeking work because they:
 - i) have made arrangements to take up a new job or to start business at a subsequent date; or
 - ii) are expecting to return to their original jobs (e.g. casual workers are usually called back to work when service is needed); or
 - iii) believe that work is not available to them.

Underemployed population

- 1) The criteria for an employed person to be classified as underemployed are:
- involuntarily working less than 35 hours during the seven days before enumeration; and either
- a) has been available for additional work during the seven days before enumeration; or
 - b) has sought additional work during the thirty days before enumeration.
- 2) Working short hours is considered as involuntary if it is due to economic reasons such as slack work, material shortage, mechanical breakdown and inability to find a full-time job.

Labour force participation rate refers to the proportion of labour force in the land-based civilian non-institutional population aged 15 or over.

Monthly employment earnings refers to earnings from all jobs during the last month. For employees, it includes wage and salary, bonus, commission, housing allowance, overtime allowance and attendance allowance. However, back pay are excluded.

For employers and self-employed, it refers to the net earnings from business or amounts drawn from the enterprise for personal and household use.

Occupation refers to the kind of work, nature of duties and main task performed by a person in his/her main job during the seven days before enumeration. The classification used basically follows the major groups of the International Standard Classification of Occupations (1988) or (ISCO-88) for abbreviation, with local adaptation for Hong Kong.

Administrative and managerial workers - including administrators, commissioners and directors in government service; consuls; councillors; directors, chief executive officers, presidents, general managers, functional managers, branch managers and small business managers in industry, commerce, import and export trade, wholesale and retail trade, catering and lodging services, transport, electricity, gas, water and other services and agricultural and fishery sectors.

Professionals - including qualified professional scientists, doctors, dentists and other medical professionals; architects, surveyors and engineers; vice-chancellors, directors, academic staff and administrators of university, polytechnic and post-secondary college; principals and teachers of secondary school; statisticians; mathematicians; system analysts and computer programmers; lawyers and judges; accountants; business consultants and analysts; social workers; translators and interpreters; news editors and journalists; writers; librarians and members of religious orders.

Associate professionals - including science technicians, nurses and midwives, dental assistants and other health associate professionals; architectural, surveying and engineering technicians; optical and electronic equipment controllers; ship pilots and air traffic controllers; principals and teachers of primary and pre-primary school; statistical assistants; computer operators; law clerks; accounting supervisors; public relation officers; sales representatives; designers; estate managers; social work assistants; superintendents, inspectors and officers of the police and other discipline services; performers and sportsmen.

Clerks - including stenographers, secretaries and typists; bookkeeping, finance, shipping, filing and personnel clerks; cashiers and tellers; receptionists and information clerks.

Sales/service workers - including air hostesses and travel guides; house stewards; cooks and waiters; baby-sitters; hairdressers and beauticians; rank and file of the police and other discipline services; transport conductors and other service workers; wholesale and retail salesmen in shops; shop assistants and fashion models.

Craft and related workers - including miners and quarrymen; bricklayers, carpenters and other construction workers; metal moulders; blacksmiths; machinery, electric and electronic instrument mechanics; jewellery workers and watch makers; potters; typesetters; bakers, food and beverage processors; painters; craft workers in textile, garment, leather, rubber and plastic trades and other craft workers.

Plant and machine operators and assemblers - including well drillers and borers; ore smelting furnace operators; brick and tile kilnmen; sawmill sawyers; paper makers; chemical processing plant operators; power-generating plant and boiler operators; asbestos cement products makers; metal finishers and electroplaters; dairy and other food processing machine operators; printing machine operators; machine operators for production of textile, rubber and plastic products; assemblers; drivers; seamen and other plant and machine operators.

Elementary occupations - including street vendors; domestic helpers and cleaners; messengers; private security guards; watchmen; freight handlers; lift operators; construction labourers; hand packers; agricultural and fishery labourers.

Others - including farm workers, animal husbandry workers and fishermen, members of the armed forces and occupations unidentifiable and inadequately described.

Underemployed population (Please see *Underemployed population* under **Labour force**)

Underemployment rate refers to the proportion of underemployed persons in the labour force.

Unemployed population (Please see *Unemployed population* under **Labour force**)

Unemployment rate refers to the proportion of unemployed persons in the labour force.

