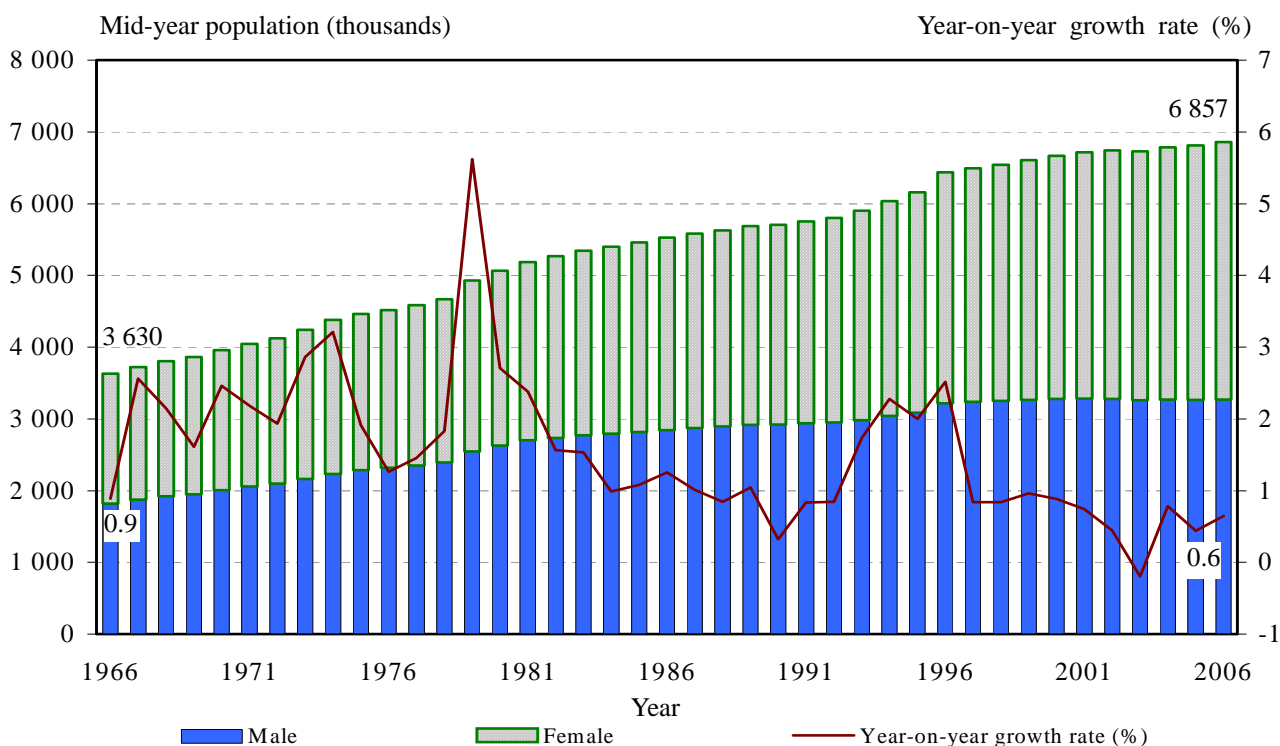


Hong Kong Population Nearly Doubled in 40 Years

- Hong Kong population grew from 3.63 million in 1966 to 6.86 million in 2006, with an average annual growth rate of 1.6%.
- In the late 1970s to early 1980s, the annual growth rates exceeded 2%. The high population growth in these years was mainly attributable to the large number of entrants from the mainland of China.
- The population growth rate was also relatively high in the middle of 1990s because of the large number of returnees returning to Hong Kong after leaving Hong Kong in the early 1990s.
- The population grew at a steady rate in recent years.

Population Size and Growth Rate



For further information on this series of articles, please write to the General Statistics Branch(2) of the Census and Statistics Department at 21/F, Wanchai Tower, 12 Harbour Road, Wan Chai, Hong Kong, call 2582 4004, or e-mail to g2b_1@censtatd.gov.hk.